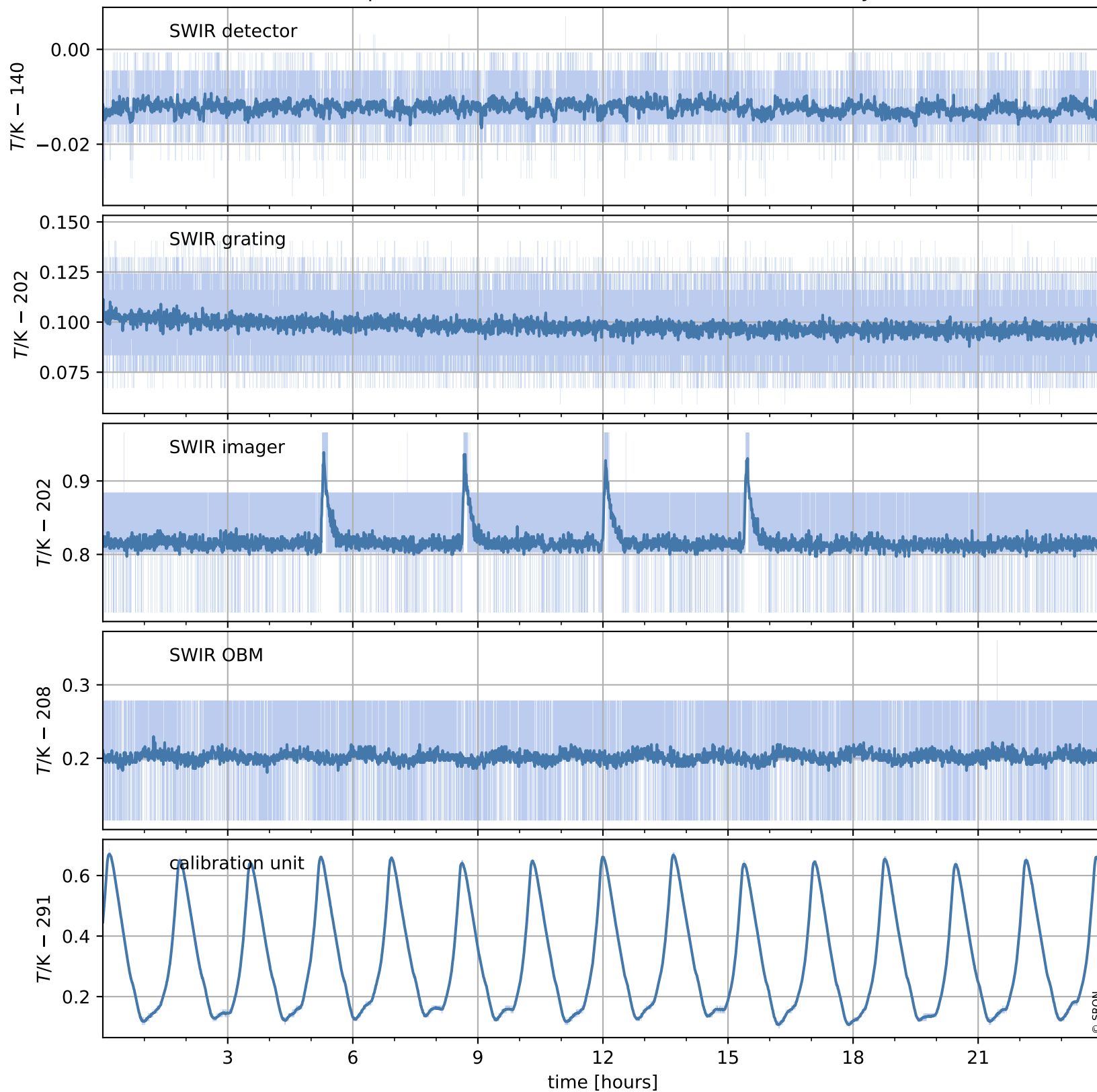


# Tropomi SWIR housekeeping data

orbits : [917, 930]  
coverage : 2017-12-17 / 2017-12-18  
created : 2023-08-21T08:24:26

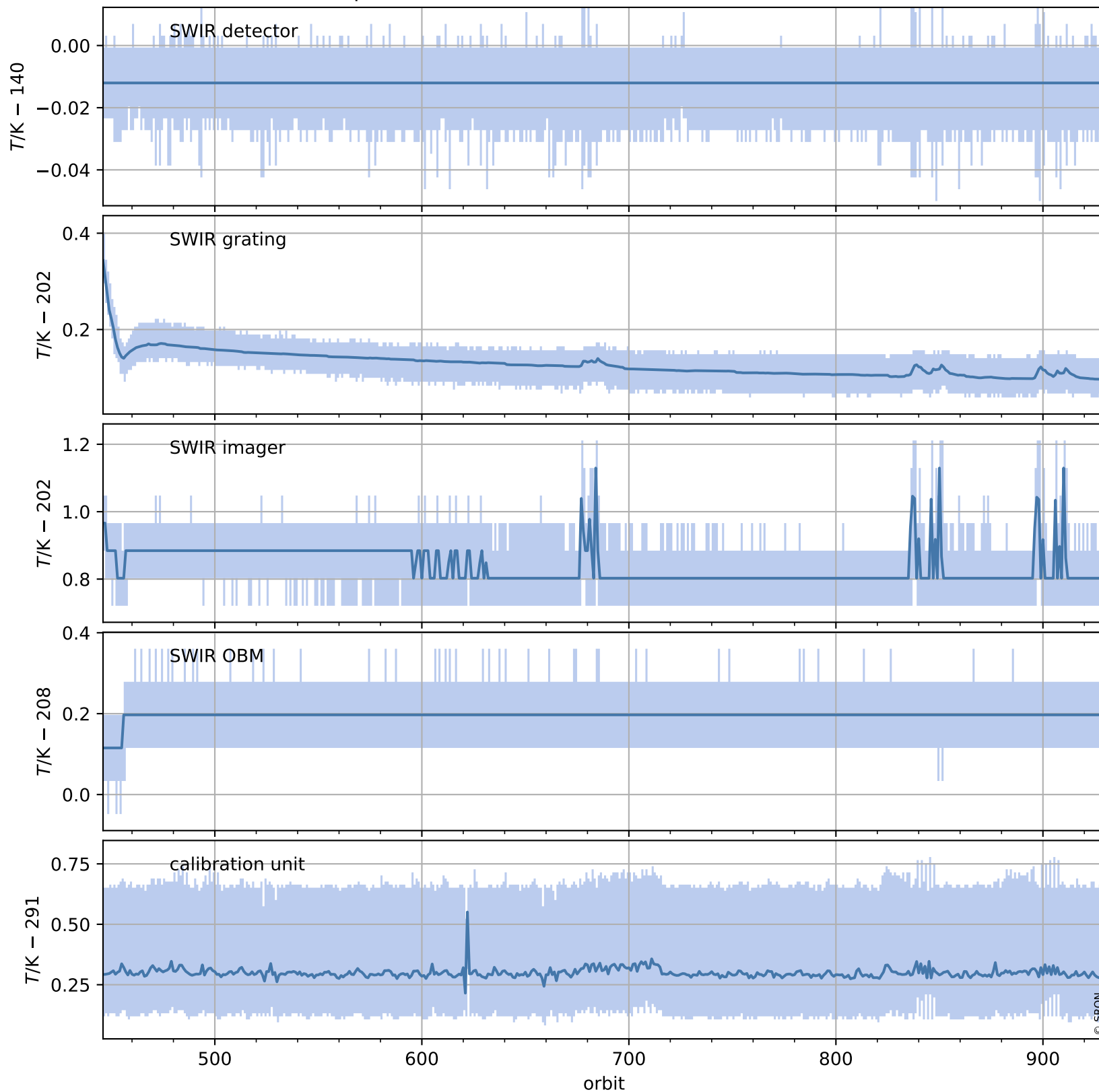
## Temperature of sensors relevant for SWIR (one day)



# Tropomi SWIR housekeeping data

orbits : [446, 930]  
coverage : 2017-11-13 / 2017-12-18  
created : 2023-08-21T08:24:26

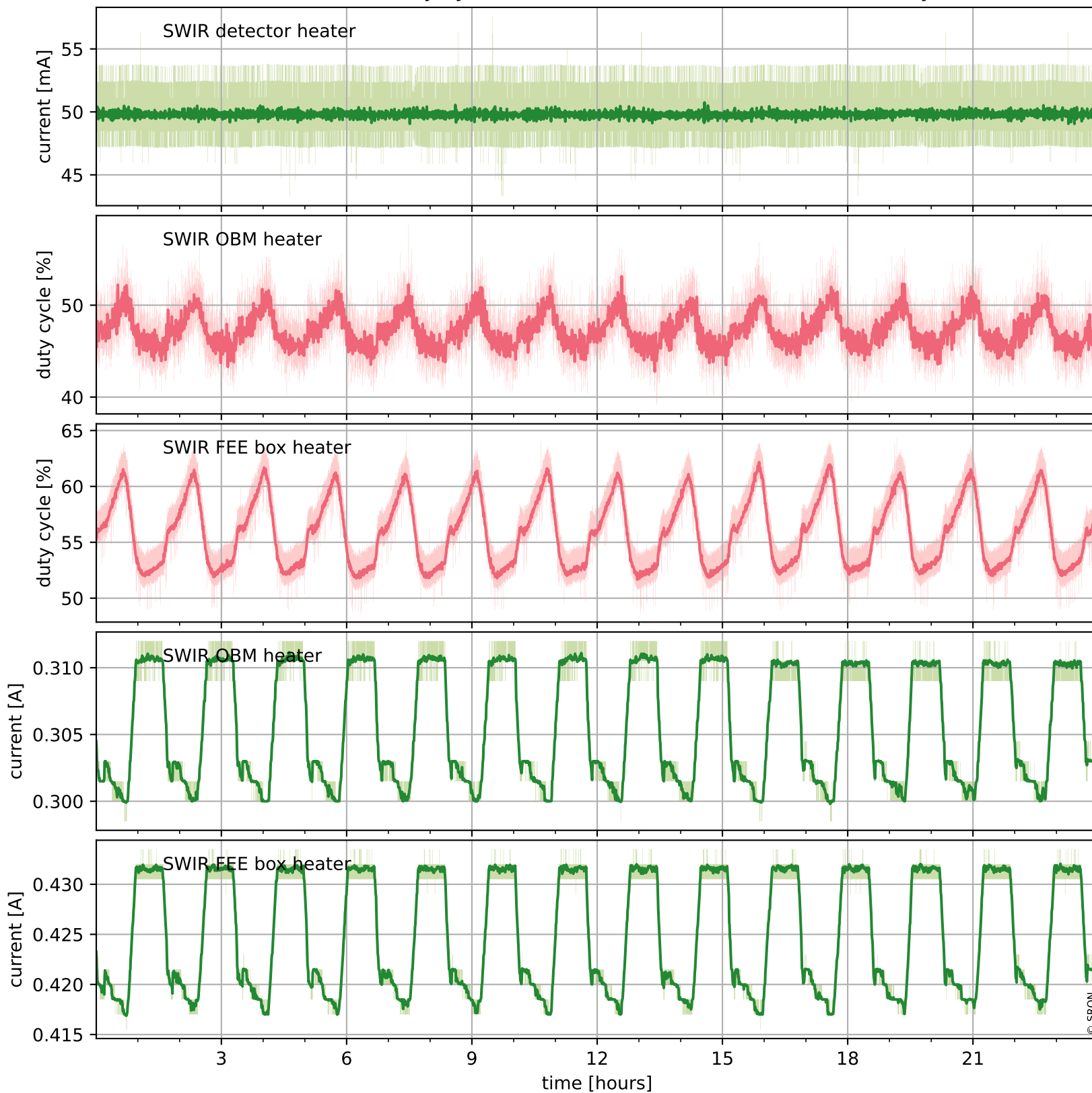
## Temperature of sensors relevant for SWIR (last month)



# Tropomi SWIR housekeeping data

orbits : [917, 930]  
coverage : 2017-12-17 / 2017-12-18  
created : 2023-08-21T08:24:26

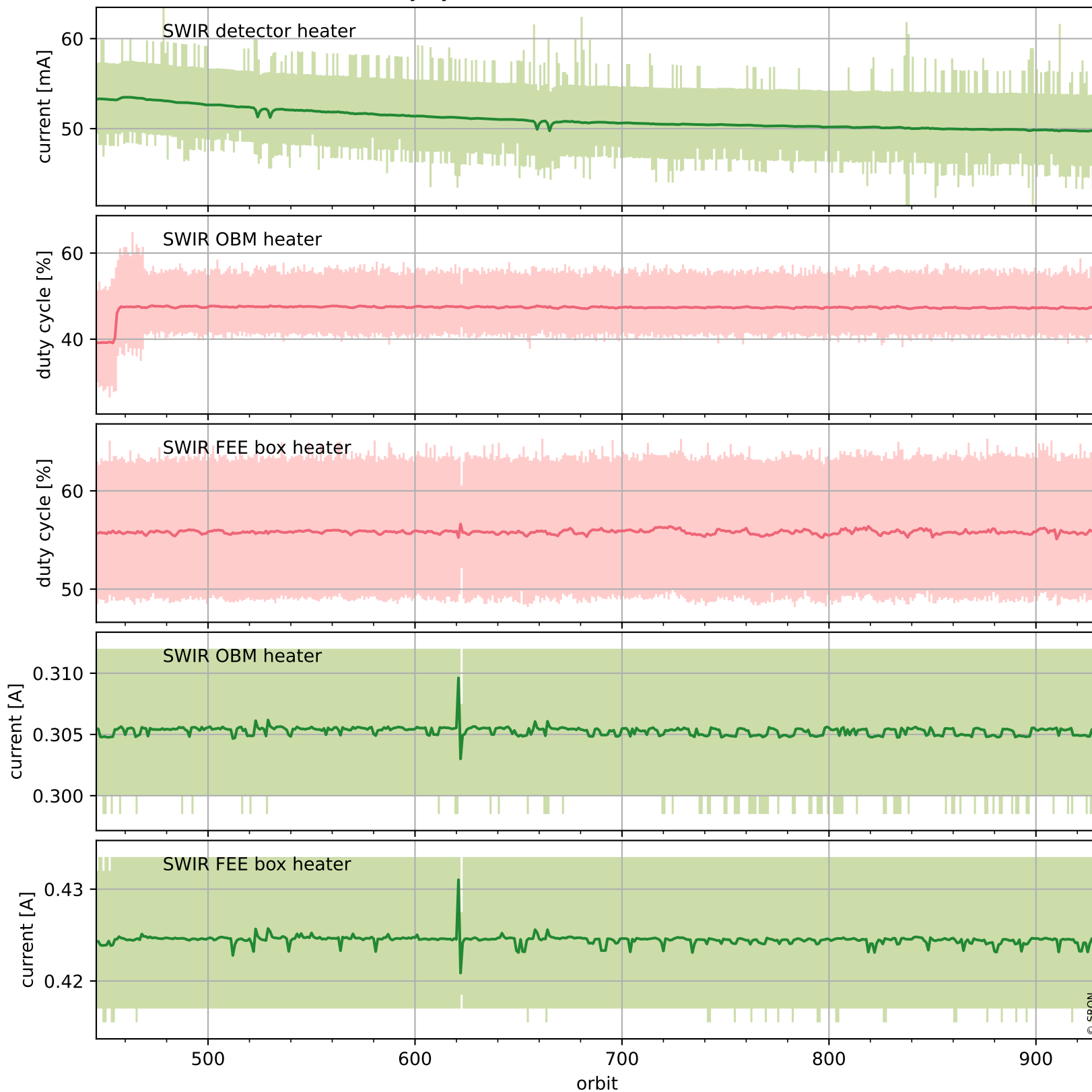
## Current and duty cycle of 3 heaters relevant for SWIR (one day)



# Tropomi SWIR housekeeping data

orbits : [446, 930]  
coverage : 2017-11-13 / 2017-12-18  
created : 2023-08-21T08:24:27

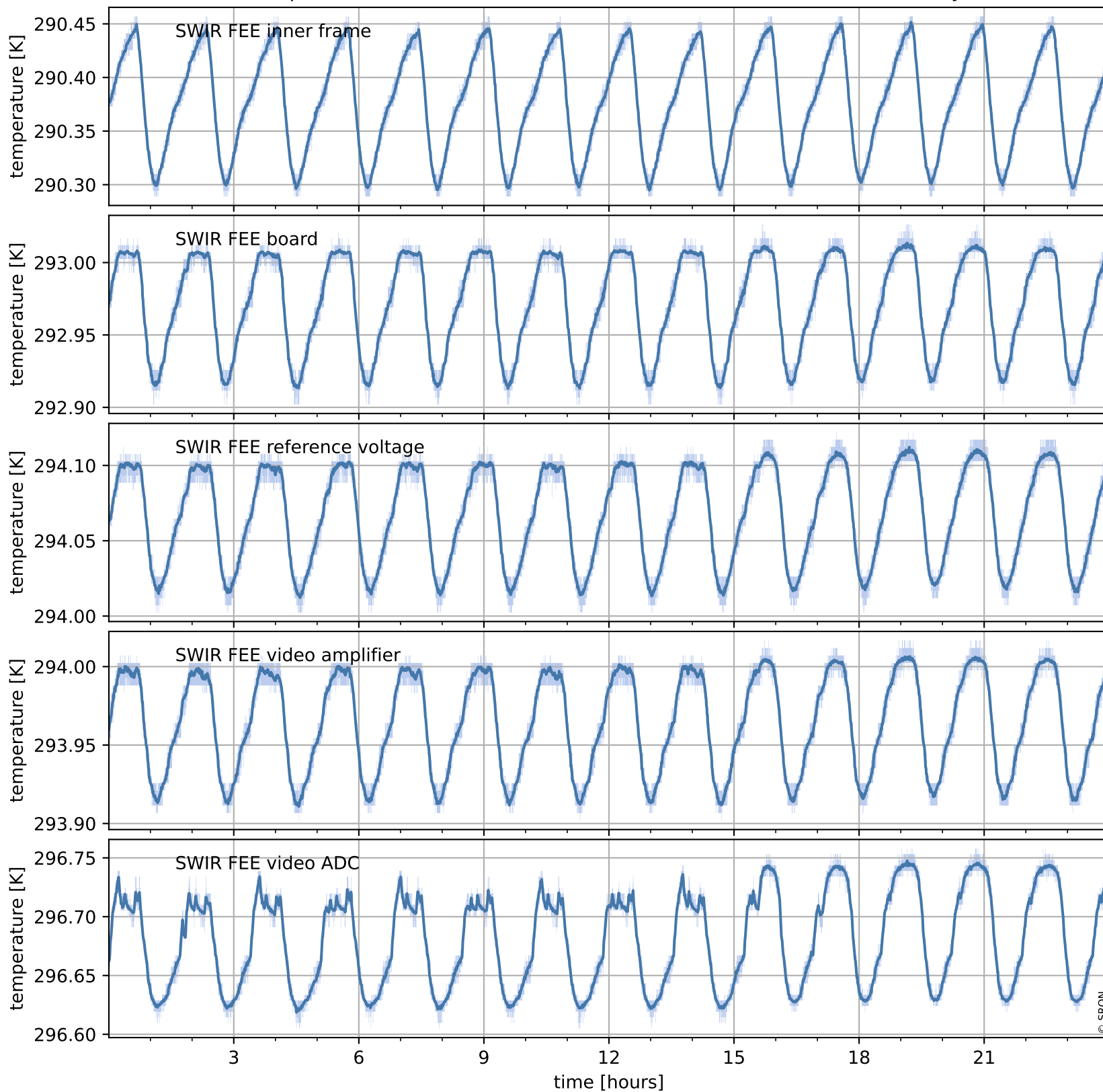
## Current and duty cycle of 3 heaters relevant for SWIR (last month)



# Tropomi SWIR housekeeping data

orbits : [917, 930]  
coverage : 2017-12-17 / 2017-12-18  
created : 2023-08-21T08:24:27

## Temperature of sensors at the SWIR front-end electronics (one day)



# Tropomi SWIR housekeeping data

orbits : [446, 930]  
coverage : 2017-11-13 / 2017-12-18  
created : 2023-08-21T08:24:27

## Temperature of sensors at the SWIR front-end electronics (last month)

