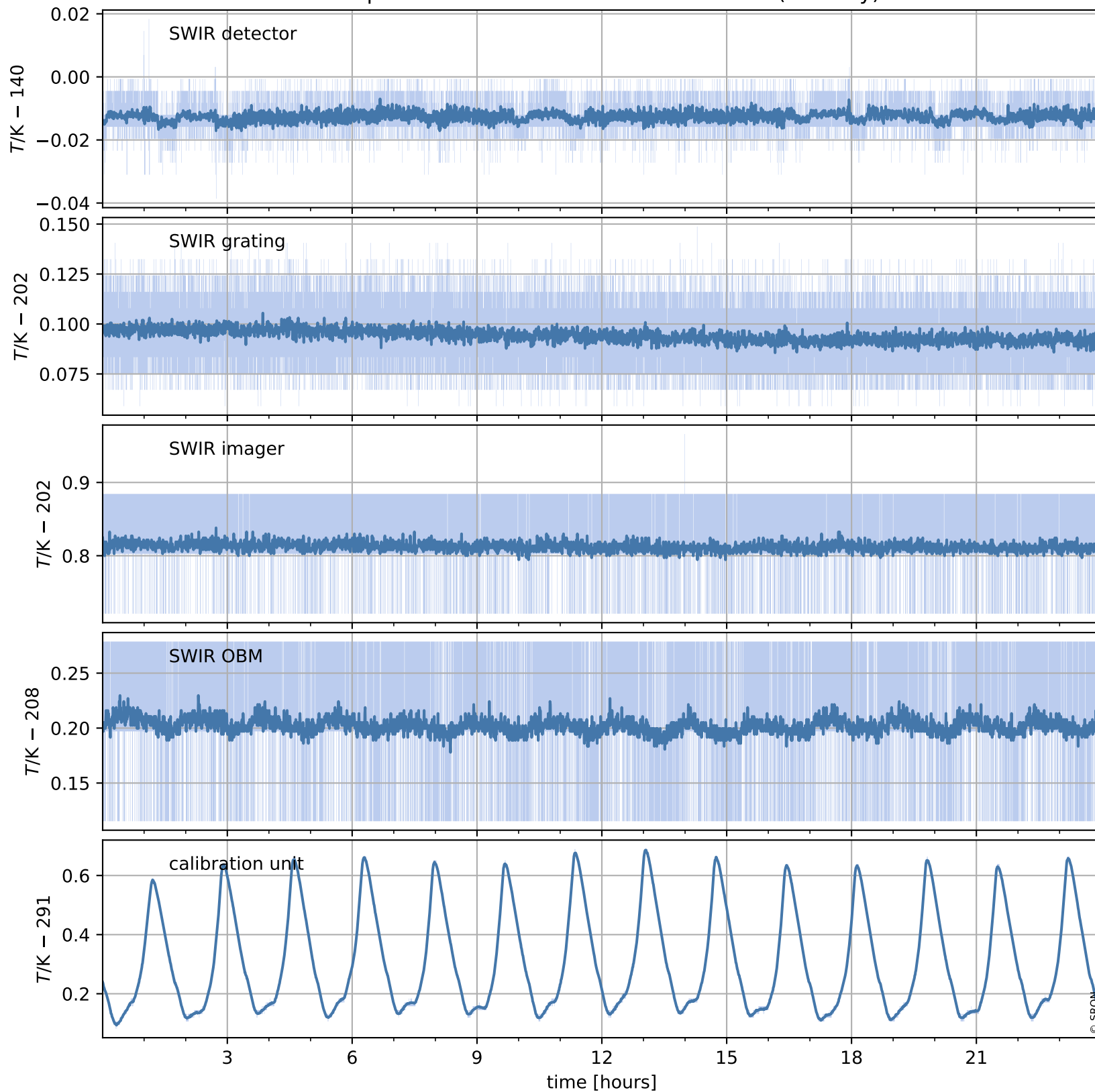


# Tropomi SWIR housekeeping data

orbits : [946, 959]  
coverage : 2017-12-19 / 2017-12-20  
created : 2023-08-21T08:24:30

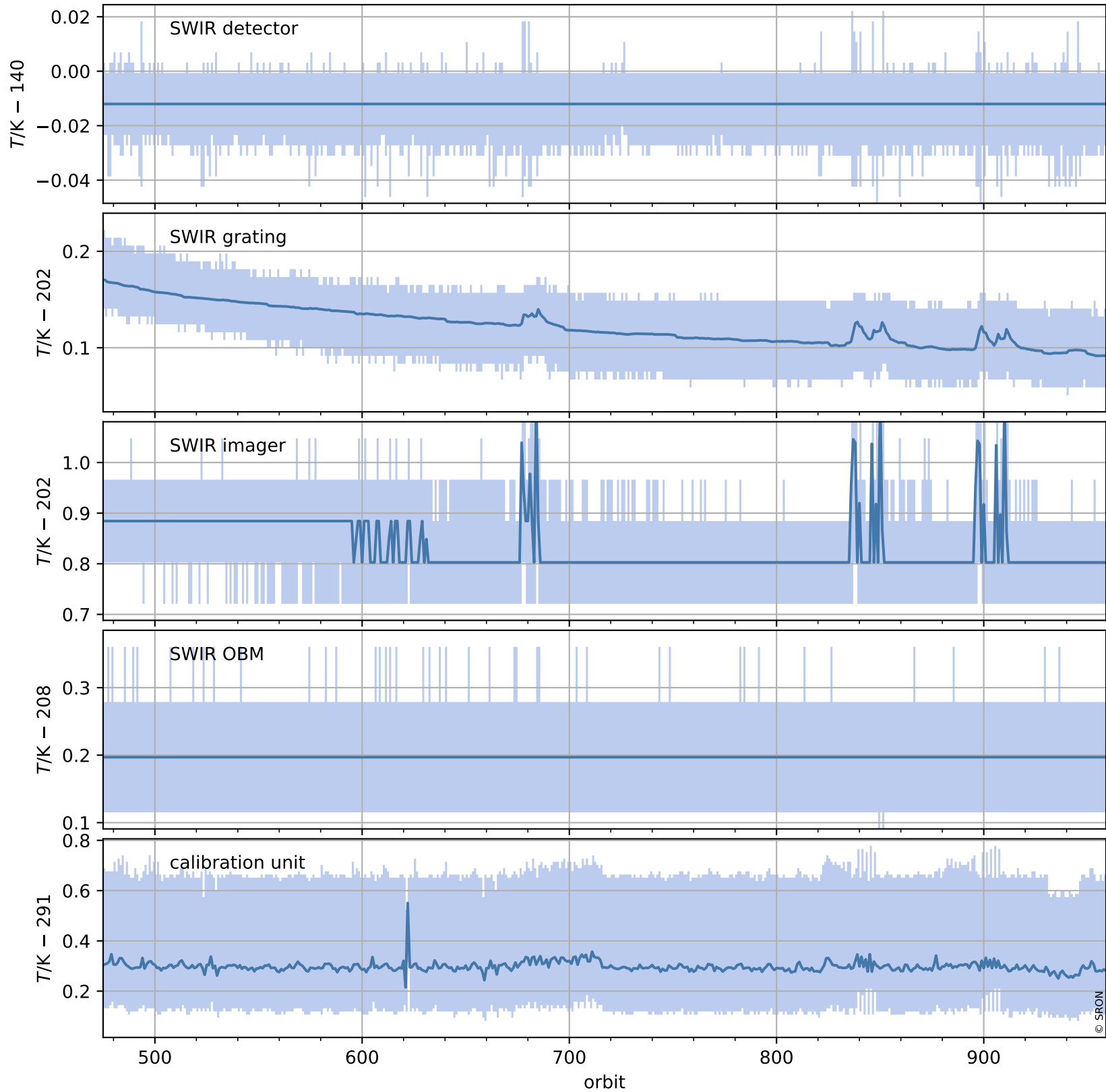
## Temperature of sensors relevant for SWIR (one day)



# Tropomi SWIR housekeeping data

orbits : [475, 959]  
coverage : 2017-11-15 / 2017-12-20  
created : 2023-08-21T08:24:31

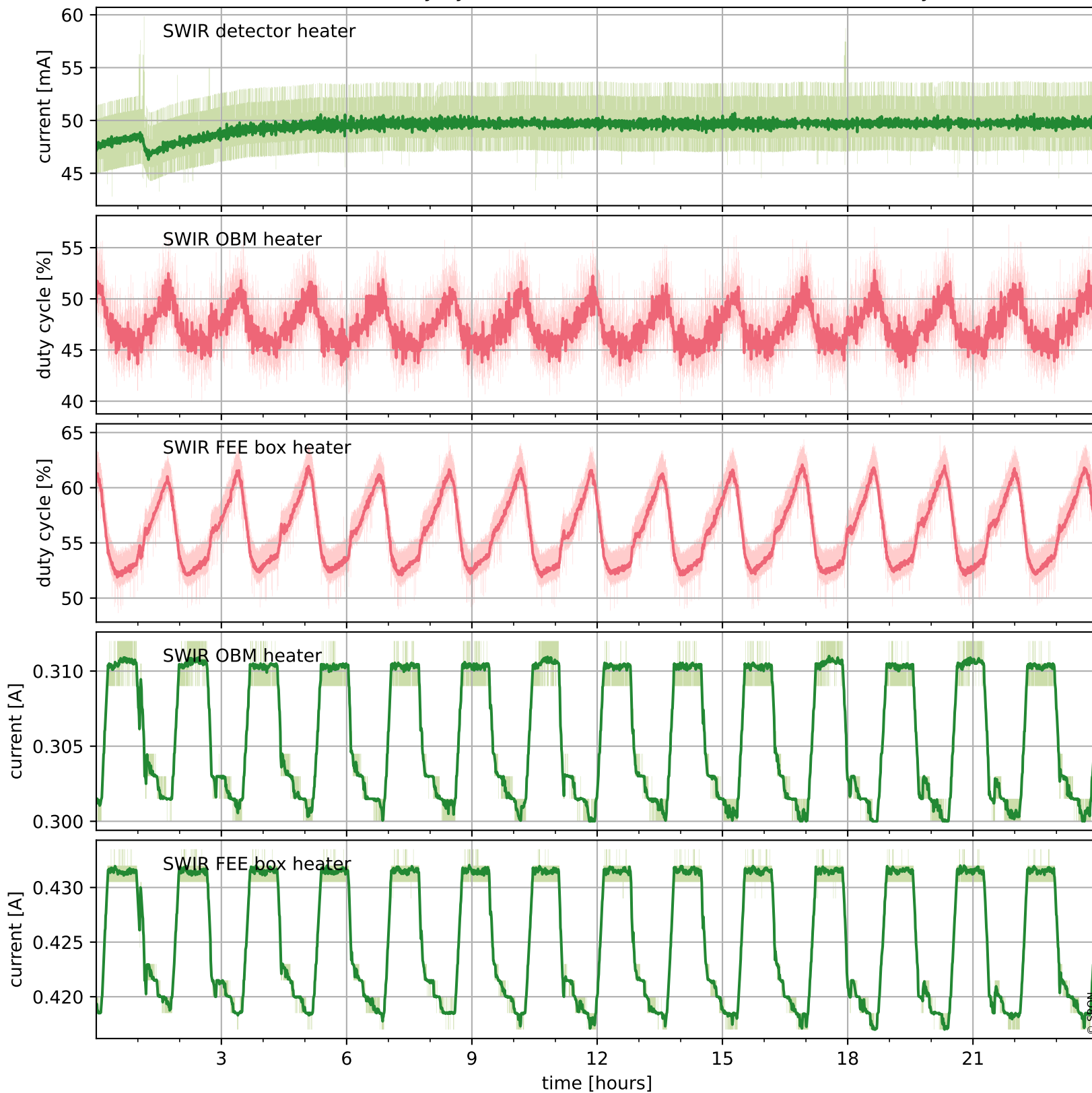
## Temperature of sensors relevant for SWIR (last month)



# Tropomi SWIR housekeeping data

orbits : [946, 959]  
coverage : 2017-12-19 / 2017-12-20  
created : 2023-08-21T08:24:31

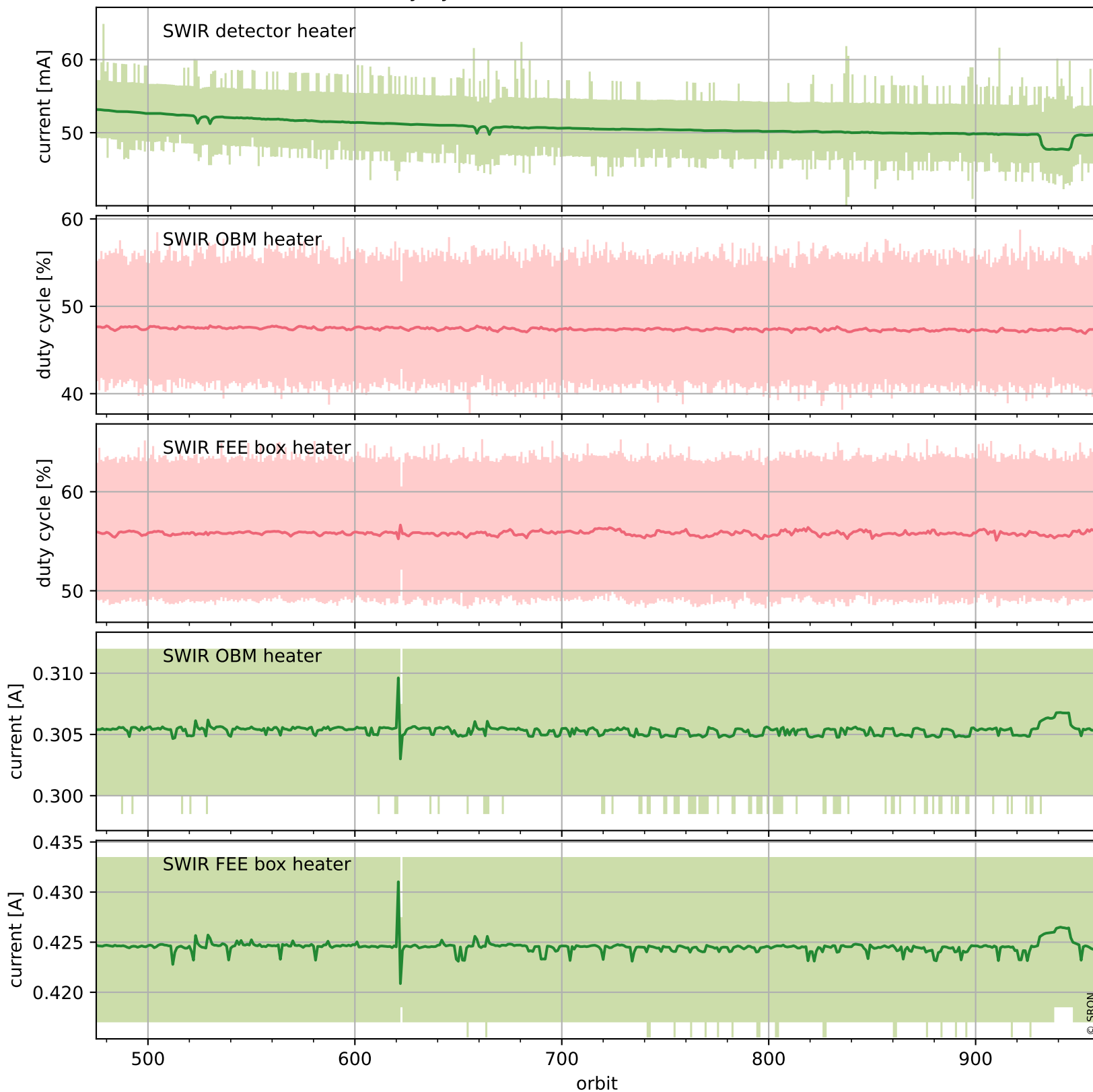
## Current and duty cycle of 3 heaters relevant for SWIR (one day)



# Tropomi SWIR housekeeping data

orbits : [475, 959]  
coverage : 2017-11-15 / 2017-12-20  
created : 2023-08-21T08:24:31

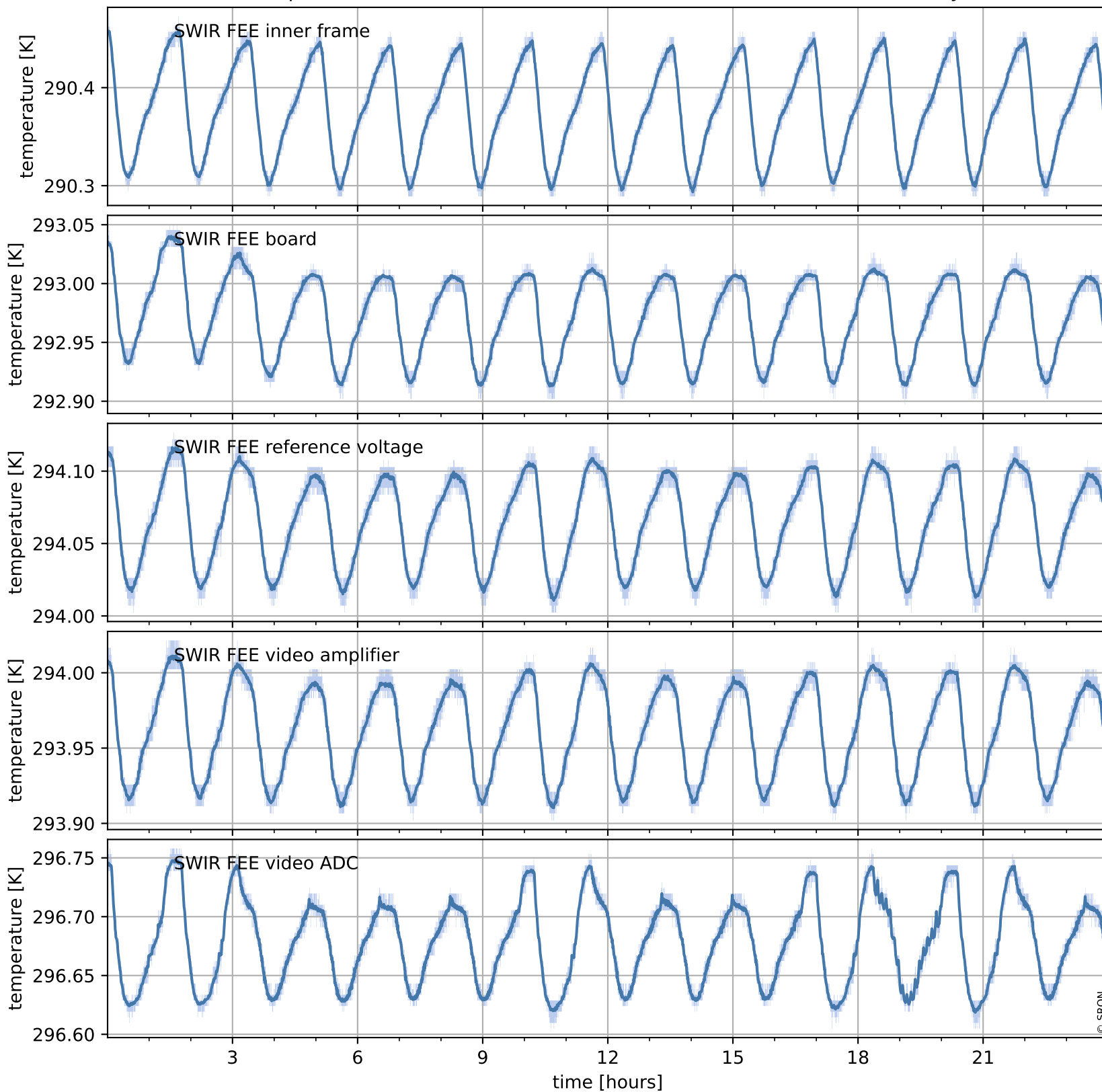
## Current and duty cycle of 3 heaters relevant for SWIR (last month)



# Tropomi SWIR housekeeping data

orbits : [946, 959]  
coverage : 2017-12-19 / 2017-12-20  
created : 2023-08-21T08:24:32

## Temperature of sensors at the SWIR front-end electronics (one day)



# Tropomi SWIR housekeeping data

orbits : [475, 959]  
coverage : 2017-11-15 / 2017-12-20  
created : 2023-08-21T08:24:32

## Temperature of sensors at the SWIR front-end electronics (last month)

