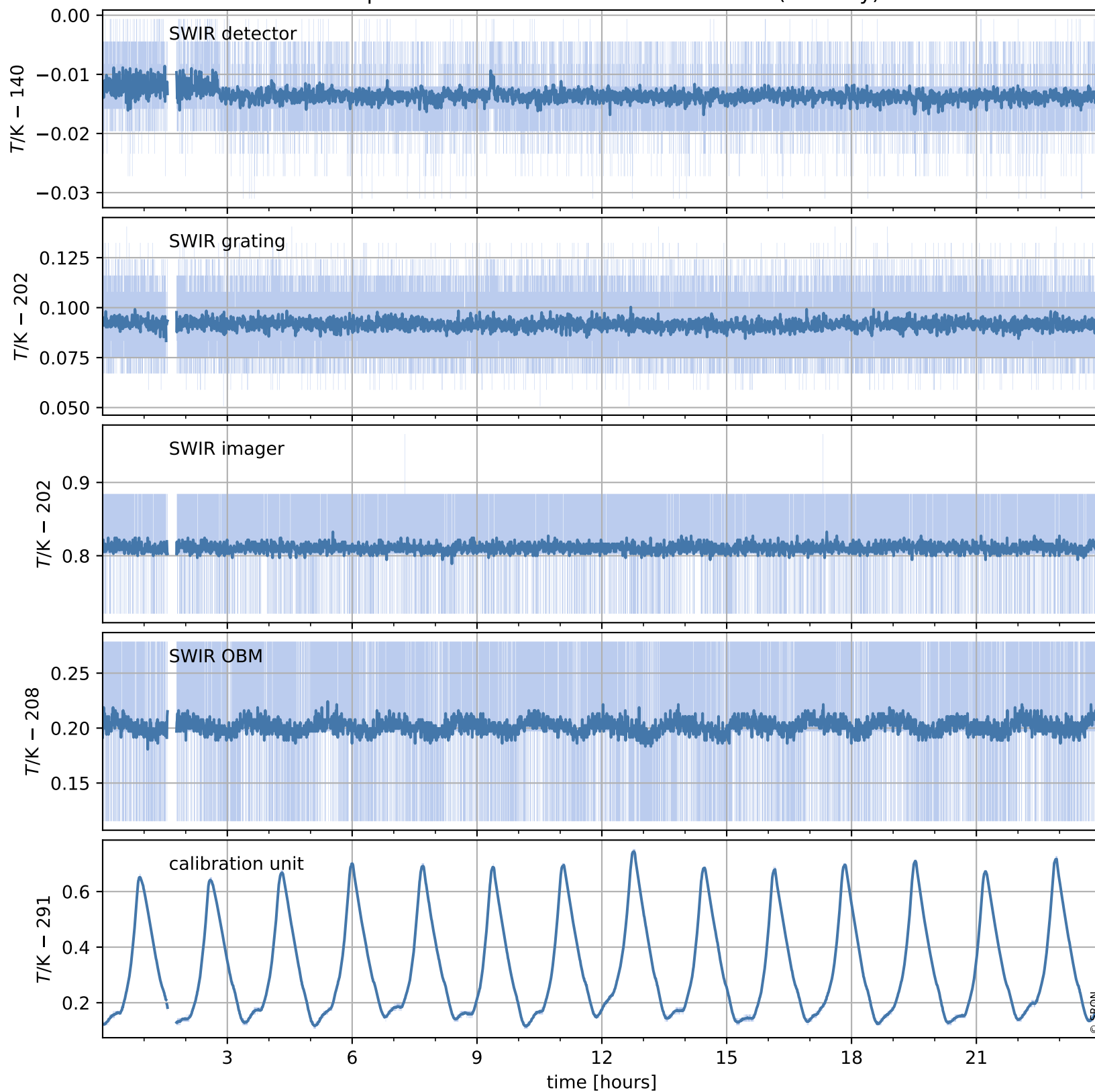


# Tropomi SWIR housekeeping data

orbits : [960, 973]  
coverage : 2017-12-20 / 2017-12-21  
created : 2023-08-21T08:24:33

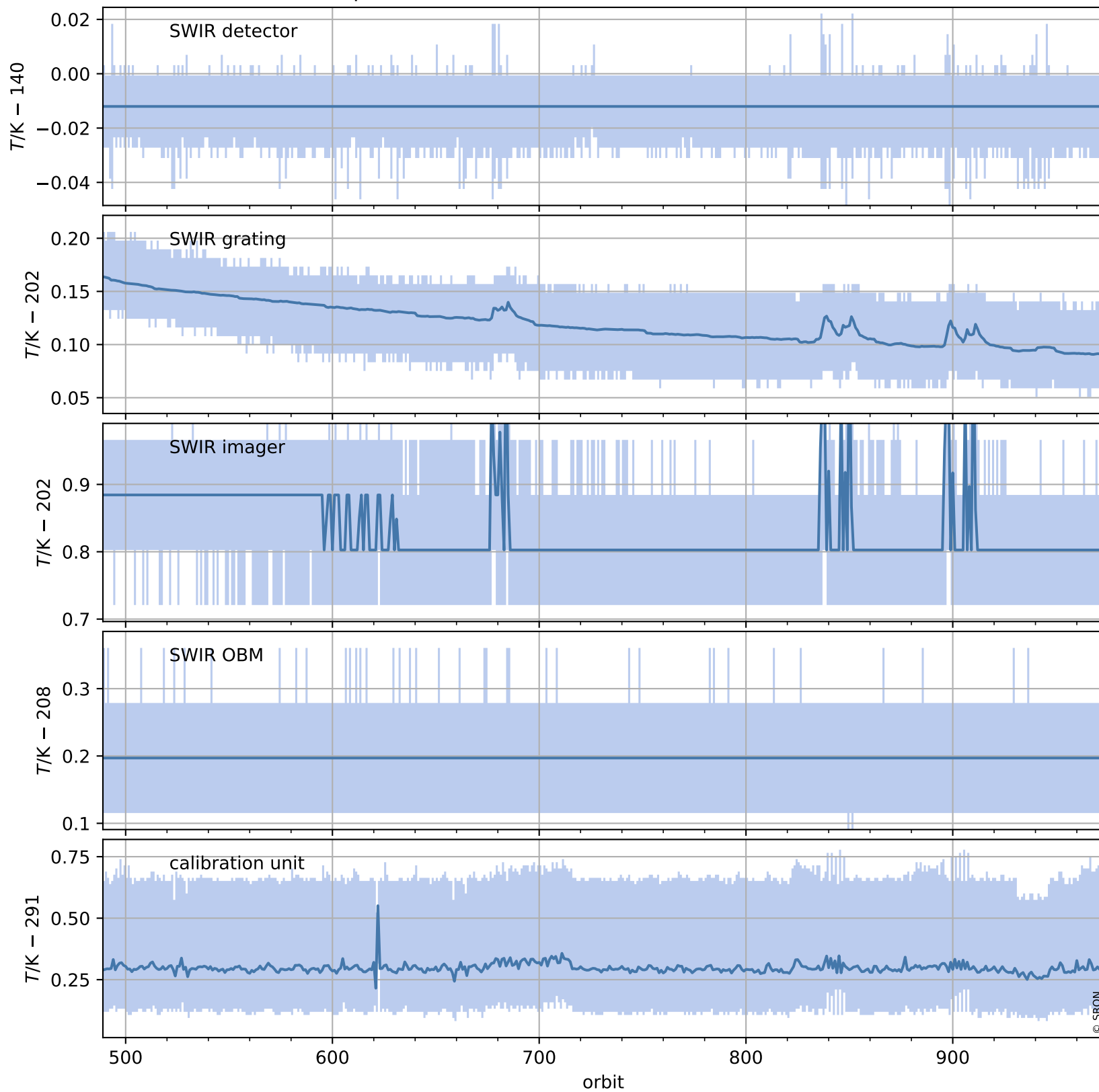
## Temperature of sensors relevant for SWIR (one day)



# Tropomi SWIR housekeeping data

orbits : [489, 973]  
coverage : 2017-11-16 / 2017-12-21  
created : 2023-08-21T08:24:33

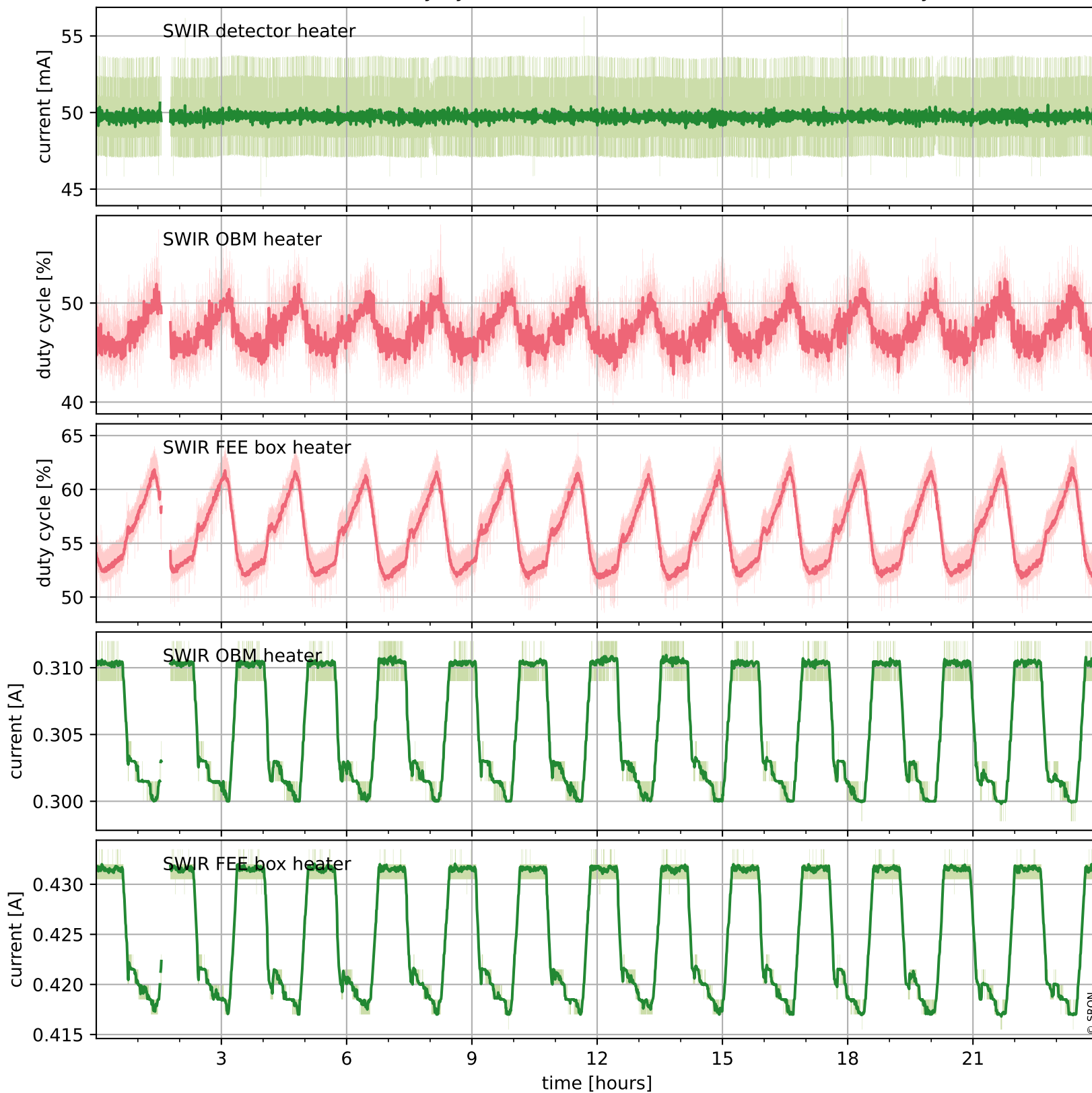
## Temperature of sensors relevant for SWIR (last month)



# Tropomi SWIR housekeeping data

orbits : [960, 973]  
coverage : 2017-12-20 / 2017-12-21  
created : 2023-08-21T08:24:33

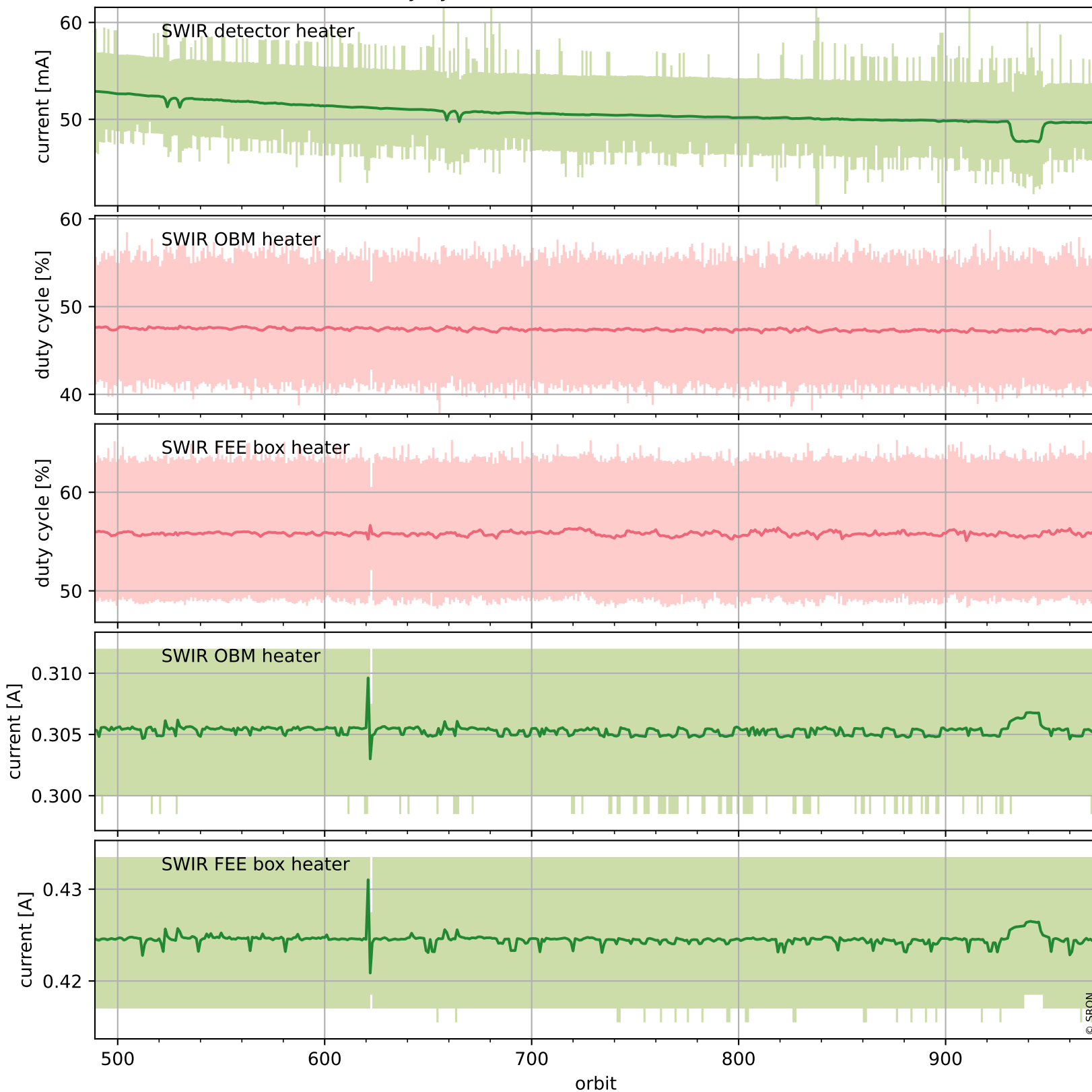
## Current and duty cycle of 3 heaters relevant for SWIR (one day)



# Tropomi SWIR housekeeping data

orbits : [489, 973]  
coverage : 2017-11-16 / 2017-12-21  
created : 2023-08-21T08:24:34

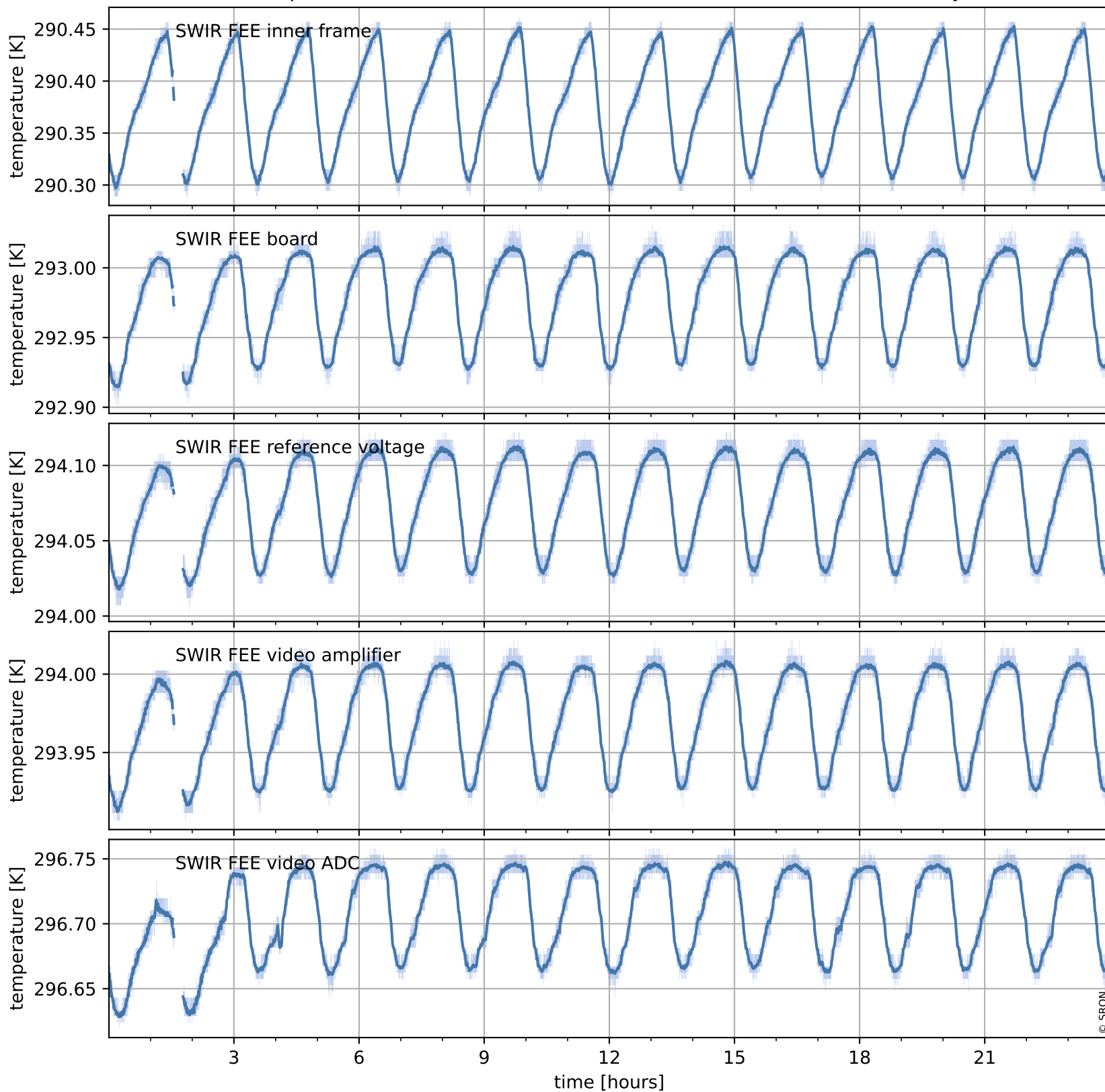
## Current and duty cycle of 3 heaters relevant for SWIR (last month)



# Tropomi SWIR housekeeping data

orbits : [960, 973]  
coverage : 2017-12-20 / 2017-12-21  
created : 2023-08-21T08:24:34

## Temperature of sensors at the SWIR front-end electronics (one day)



# Tropomi SWIR housekeeping data

orbits : [489, 973]  
coverage : 2017-11-16 / 2017-12-21  
created : 2023-08-21T08:24:34

## Temperature of sensors at the SWIR front-end electronics (last month)

