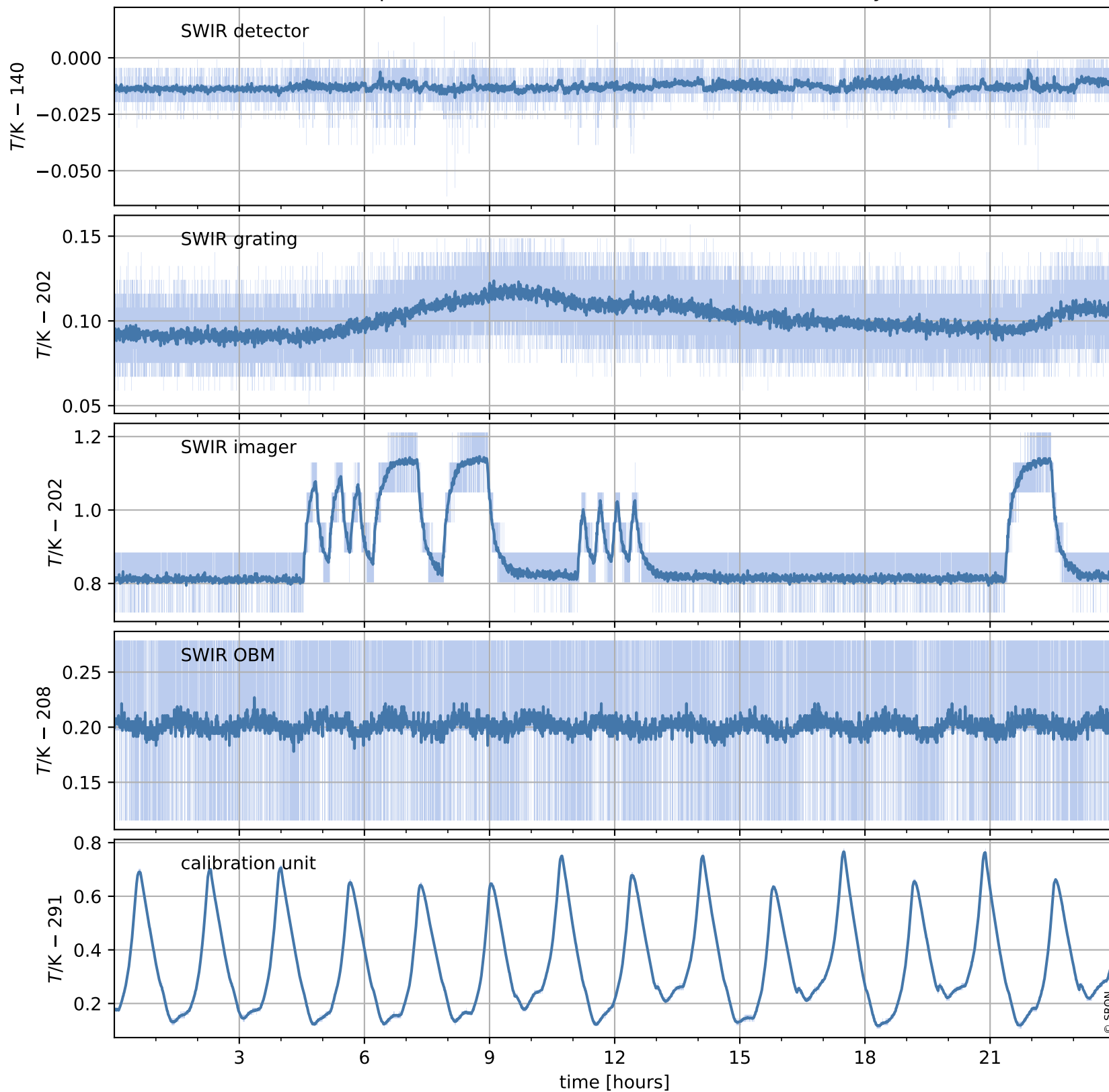


# Tropomi SWIR housekeeping data

orbits : [974, 987]  
coverage : 2017-12-21 / 2017-12-22  
created : 2023-08-21T08:24:35

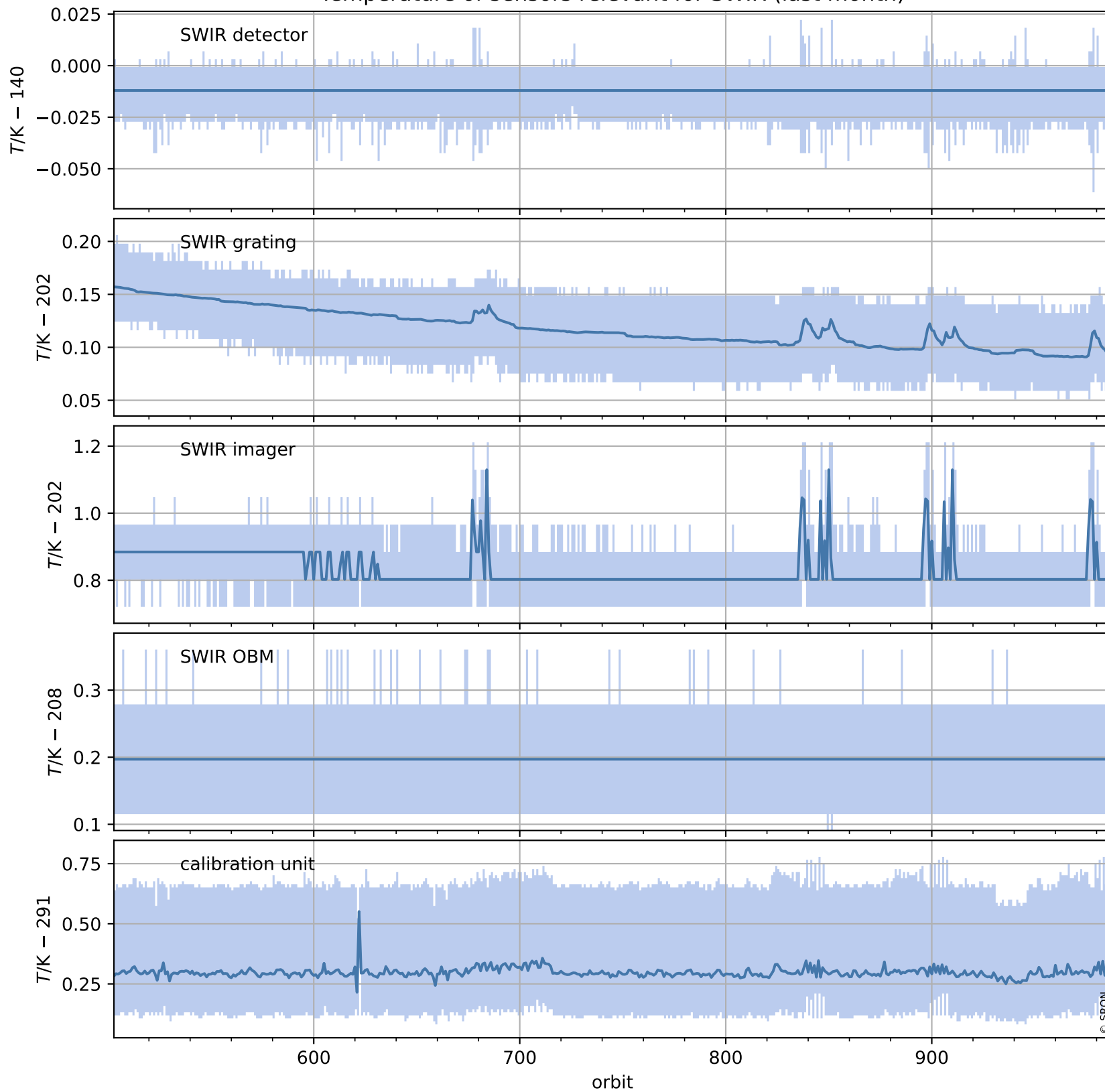
## Temperature of sensors relevant for SWIR (one day)



# Tropomi SWIR housekeeping data

orbits : [503, 987]  
coverage : 2017-11-17 / 2017-12-22  
created : 2023-08-21T08:24:35

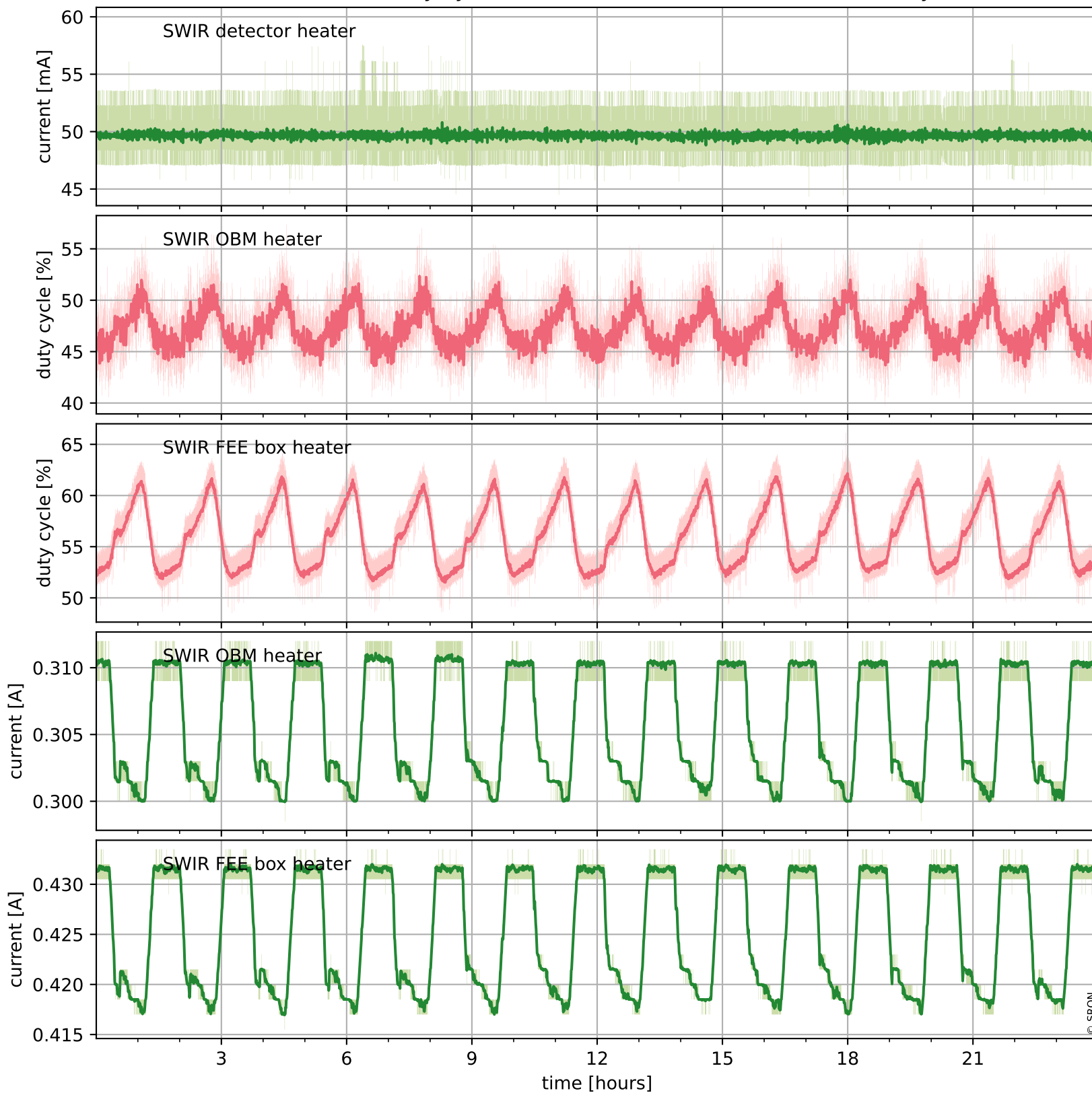
## Temperature of sensors relevant for SWIR (last month)



# Tropomi SWIR housekeeping data

orbits : [974, 987]  
coverage : 2017-12-21 / 2017-12-22  
created : 2023-08-21T08:24:36

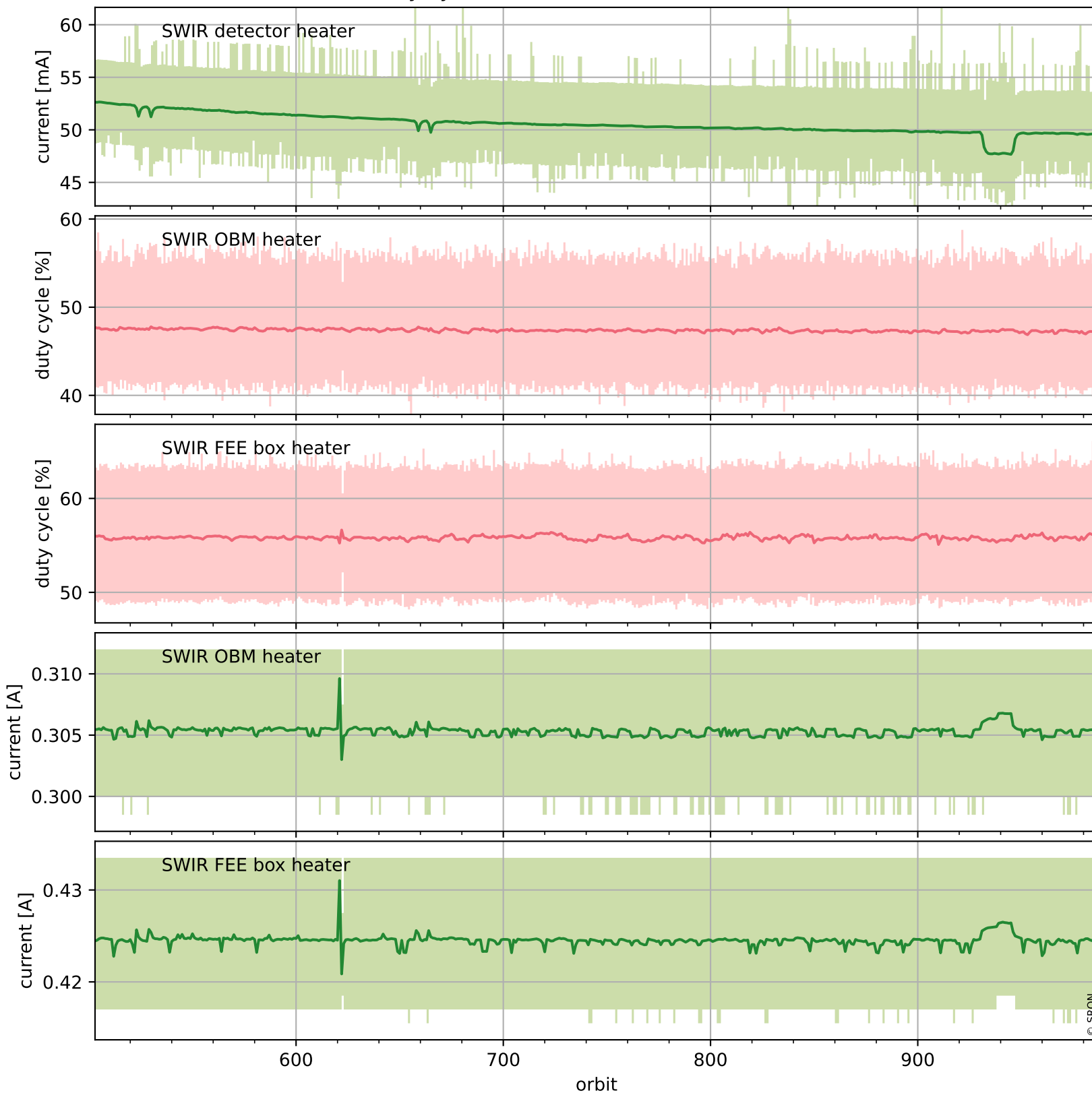
## Current and duty cycle of 3 heaters relevant for SWIR (one day)



# Tropomi SWIR housekeeping data

orbits : [503, 987]  
coverage : 2017-11-17 / 2017-12-22  
created : 2023-08-21T08:24:36

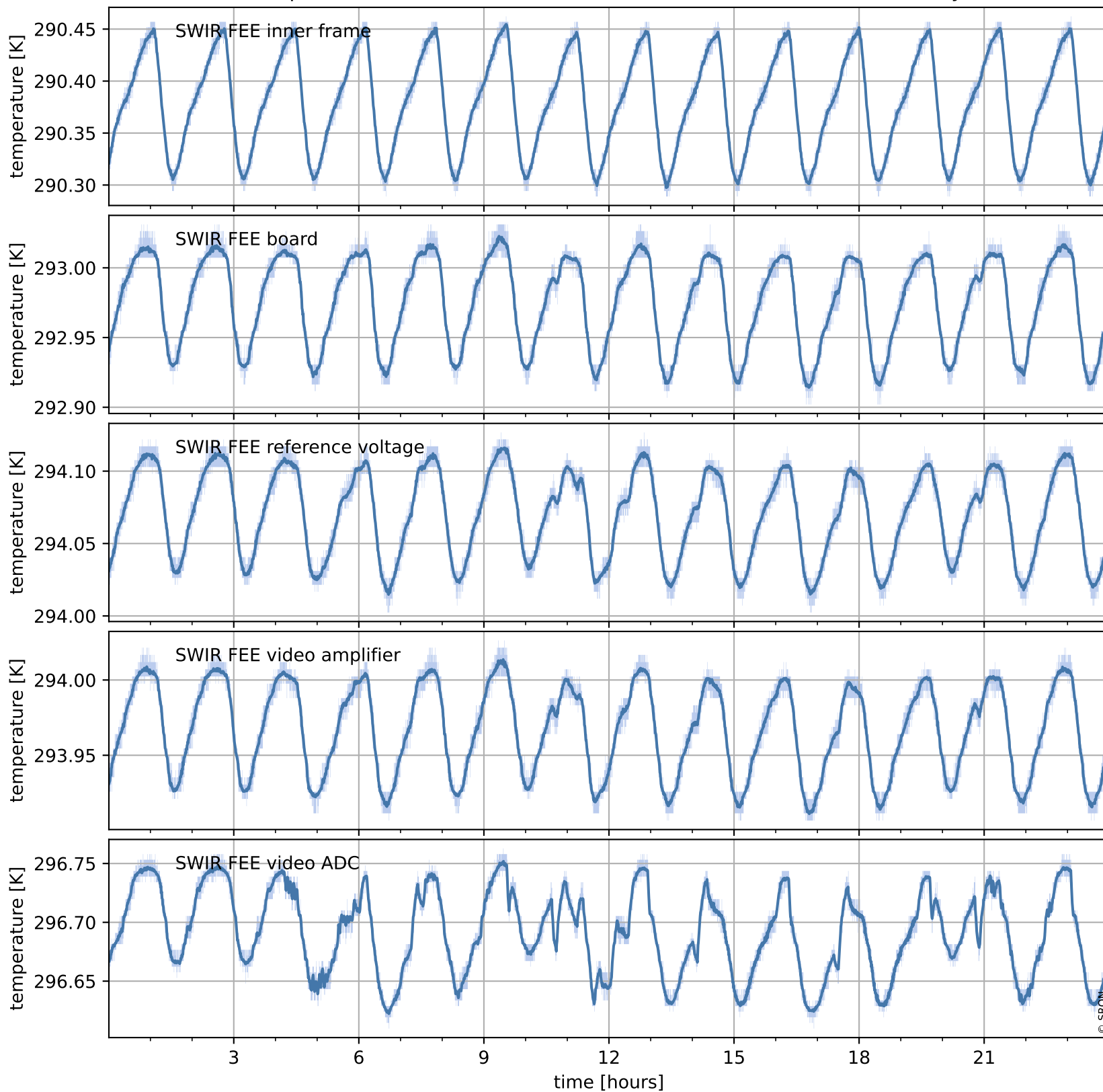
## Current and duty cycle of 3 heaters relevant for SWIR (last month)



# Tropomi SWIR housekeeping data

orbits : [974, 987]  
coverage : 2017-12-21 / 2017-12-22  
created : 2023-08-21T08:24:36

## Temperature of sensors at the SWIR front-end electronics (one day)



# Tropomi SWIR housekeeping data

orbits : [503, 987]  
coverage : 2017-11-17 / 2017-12-22  
created : 2023-08-21T08:24:37

## Temperature of sensors at the SWIR front-end electronics (last month)

