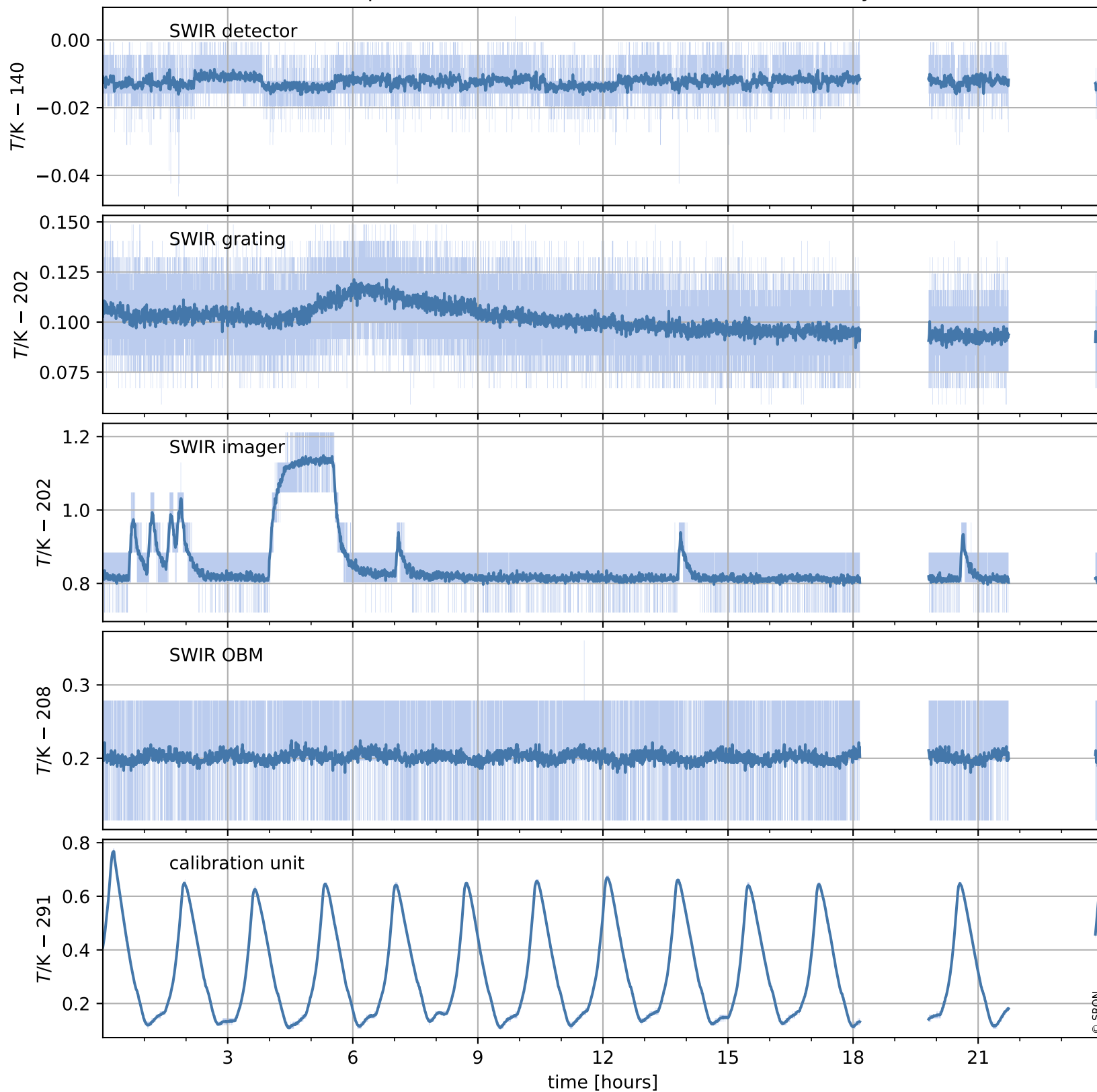


Tropomi SWIR housekeeping data

orbits : [988, 1001]
coverage : 2017-12-22 / 2017-12-23
created : 2023-08-21T08:24:37

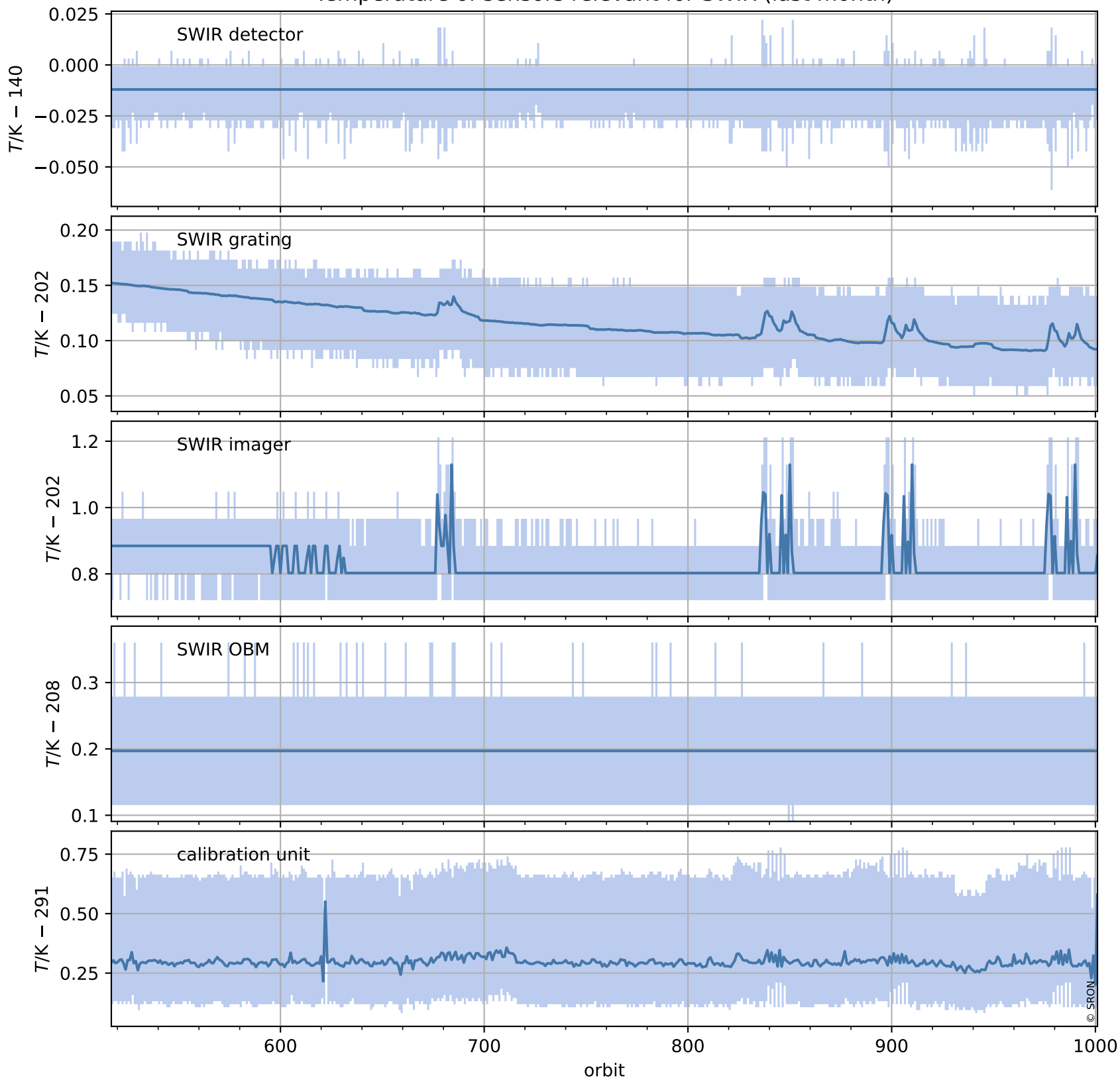
Temperature of sensors relevant for SWIR (one day)



Tropomi SWIR housekeeping data

orbits : [517, 1001]
coverage : 2017-11-18 / 2017-12-23
created : 2023-08-21T08:24:38

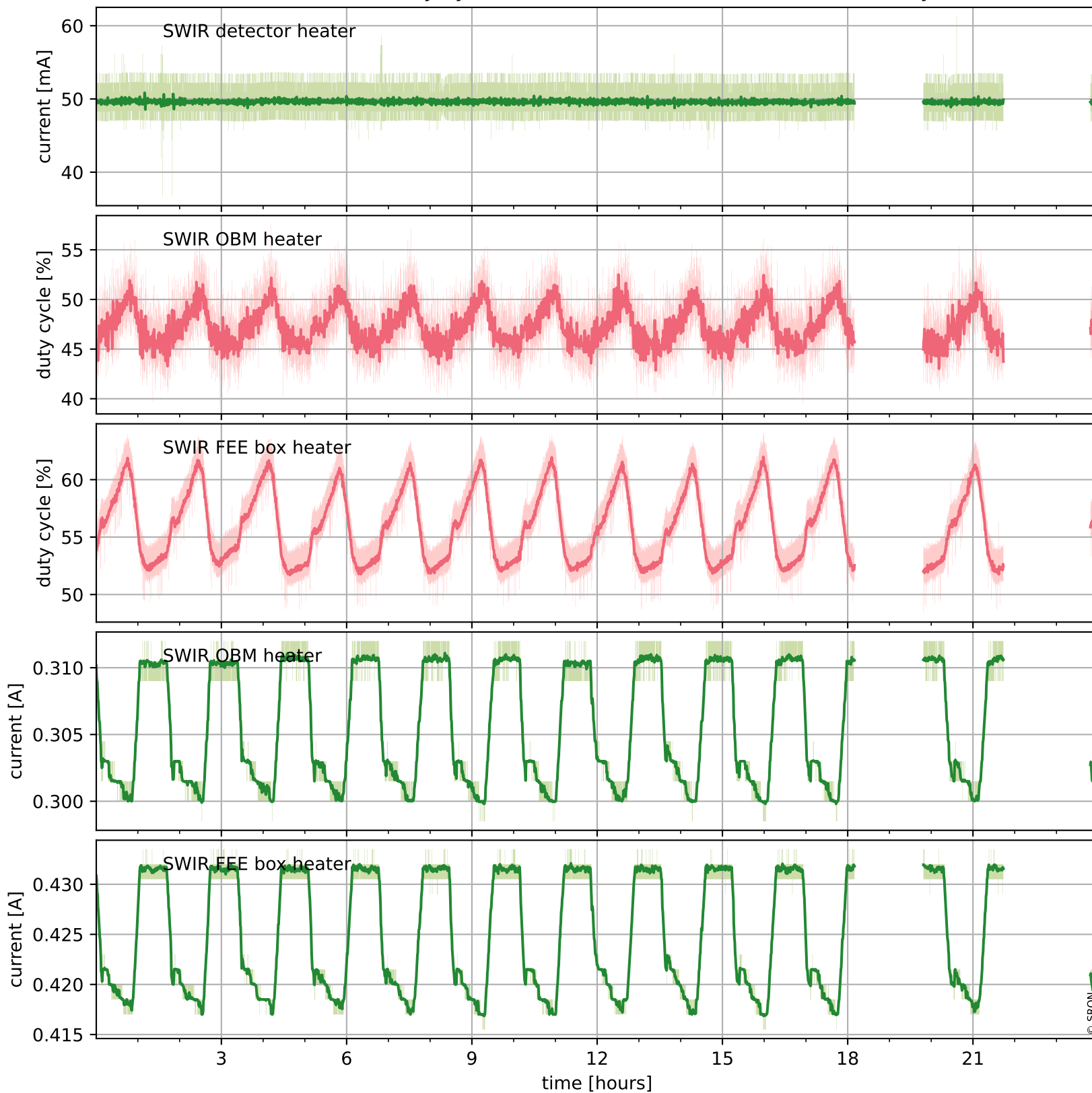
Temperature of sensors relevant for SWIR (last month)



Tropomi SWIR housekeeping data

orbits : [988, 1001]
coverage : 2017-12-22 / 2017-12-23
created : 2023-08-21T08:24:38

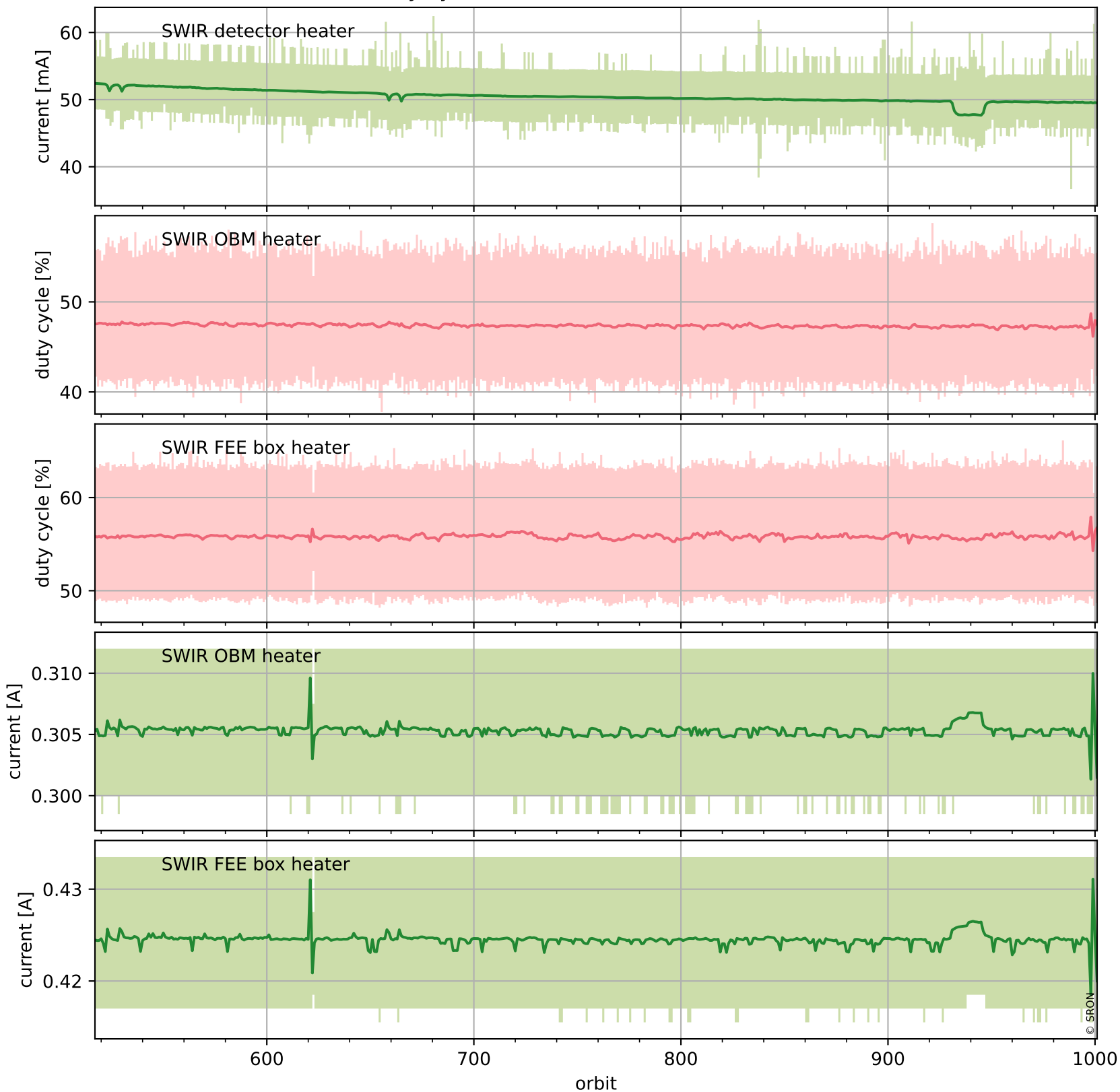
Current and duty cycle of 3 heaters relevant for SWIR (one day)



Tropomi SWIR housekeeping data

orbits : [517, 1001]
coverage : 2017-11-18 / 2017-12-23
created : 2023-08-21T08:24:38

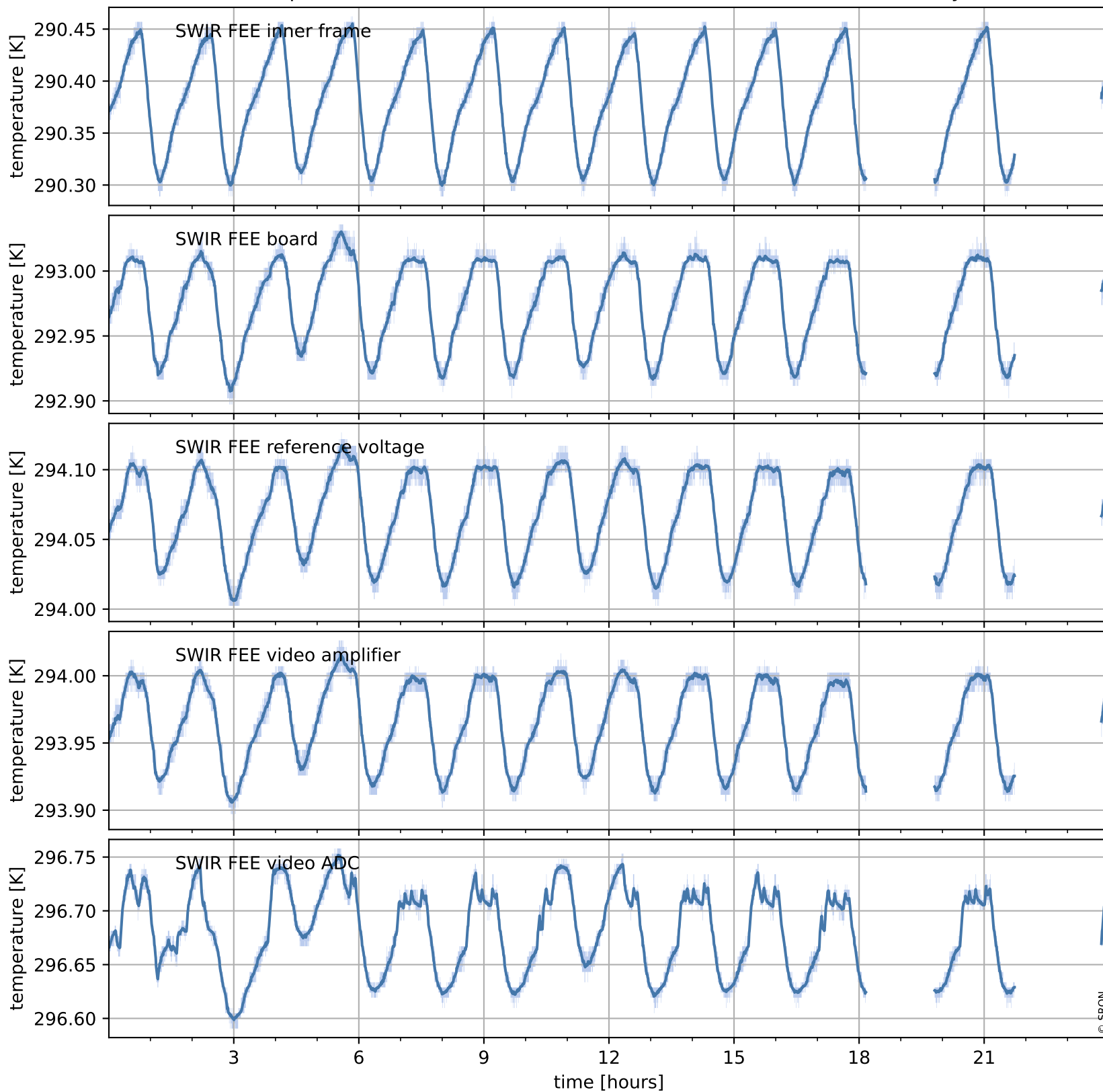
Current and duty cycle of 3 heaters relevant for SWIR (last month)



Tropomi SWIR housekeeping data

orbits : [988, 1001]
coverage : 2017-12-22 / 2017-12-23
created : 2023-08-21T08:24:39

Temperature of sensors at the SWIR front-end electronics (one day)



Tropomi SWIR housekeeping data

orbits : [517, 1001]
coverage : 2017-11-18 / 2017-12-23
created : 2023-08-21T08:24:39

Temperature of sensors at the SWIR front-end electronics (last month)

