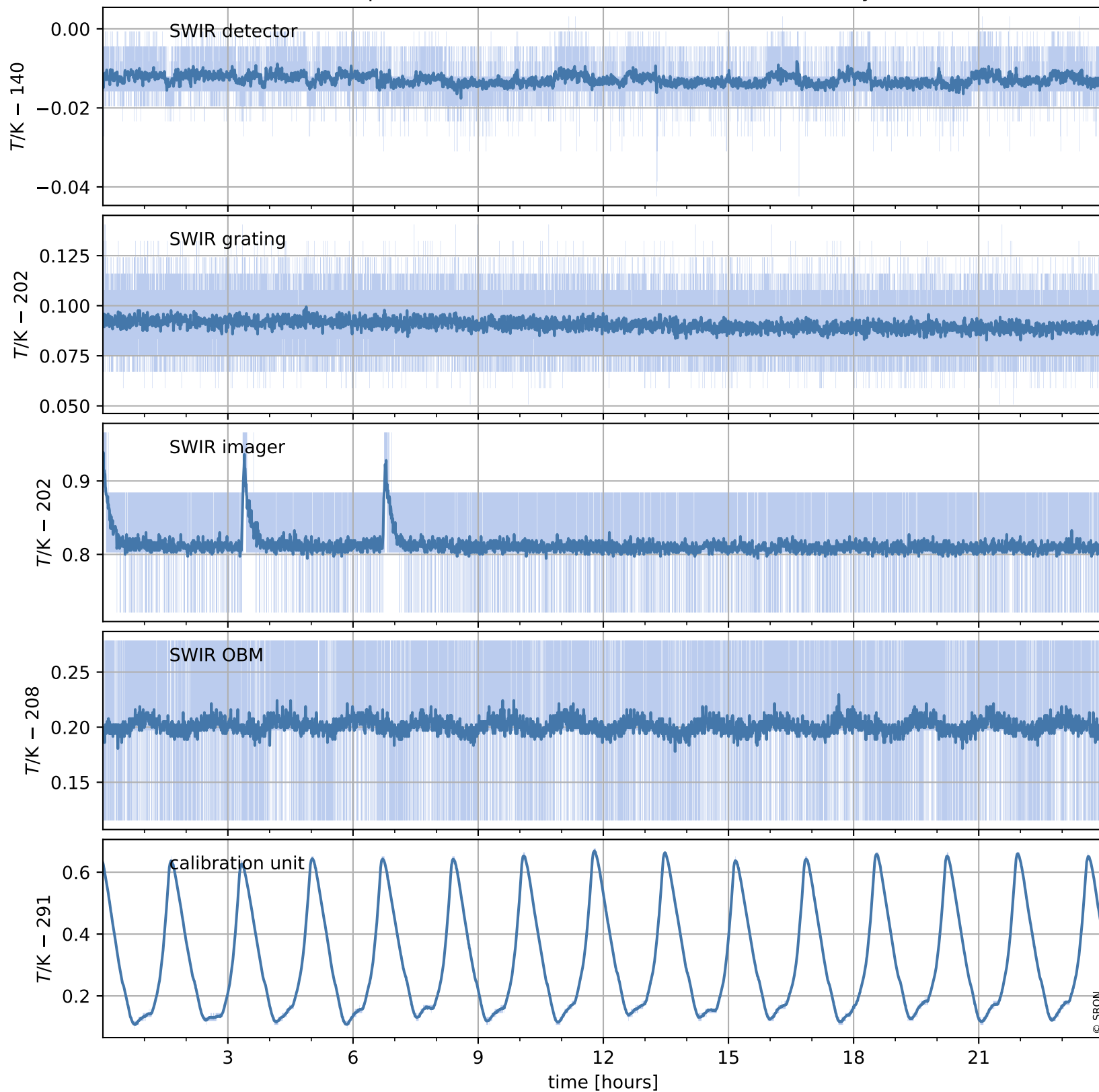


# Tropomi SWIR housekeeping data

orbits : [1002, 1016]  
coverage : 2017-12-23 / 2017-12-24  
created : 2023-08-21T08:24:40

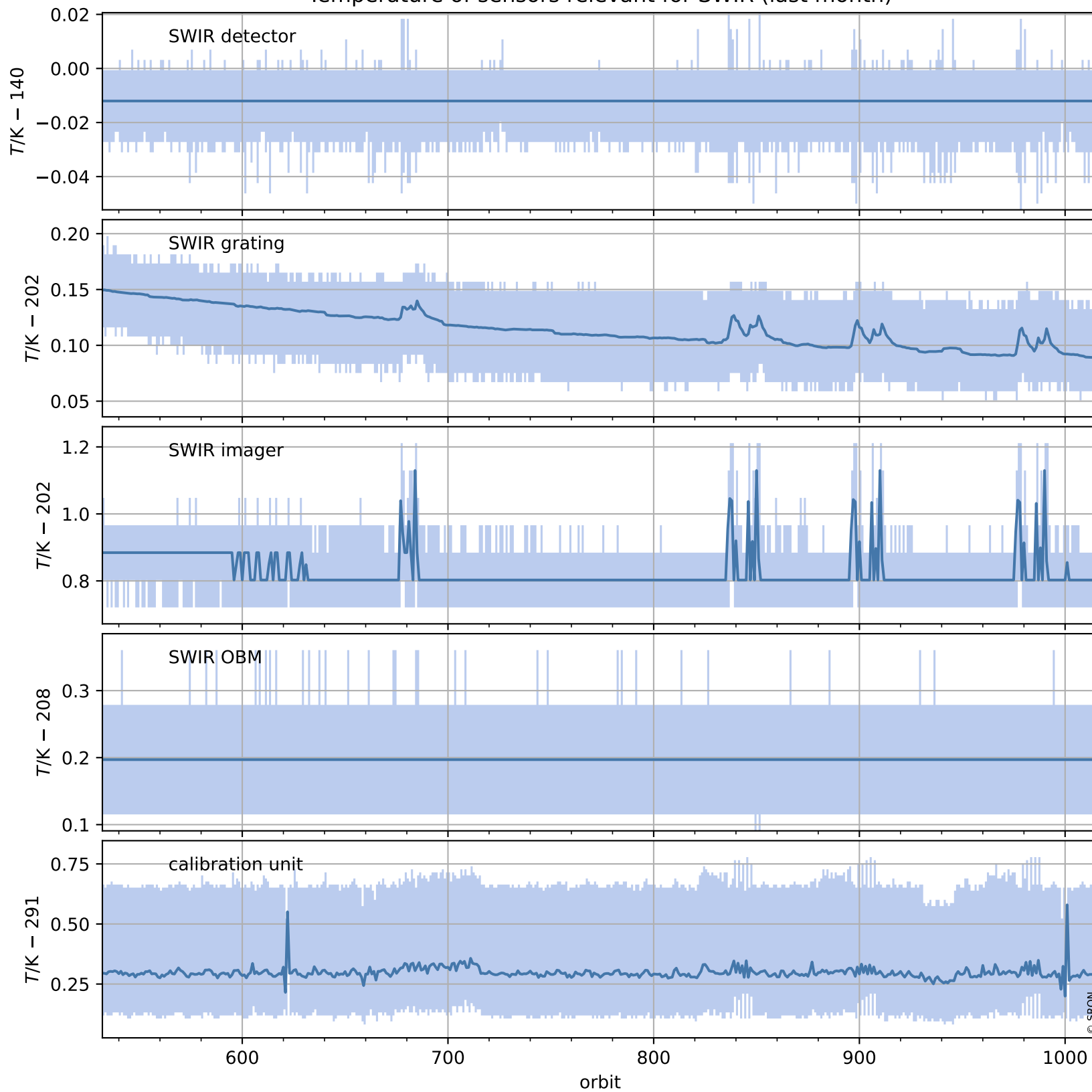
## Temperature of sensors relevant for SWIR (one day)



# Tropomi SWIR housekeeping data

orbits : [532, 1016]  
coverage : 2017-11-19 / 2017-12-24  
created : 2023-08-21T08:24:40

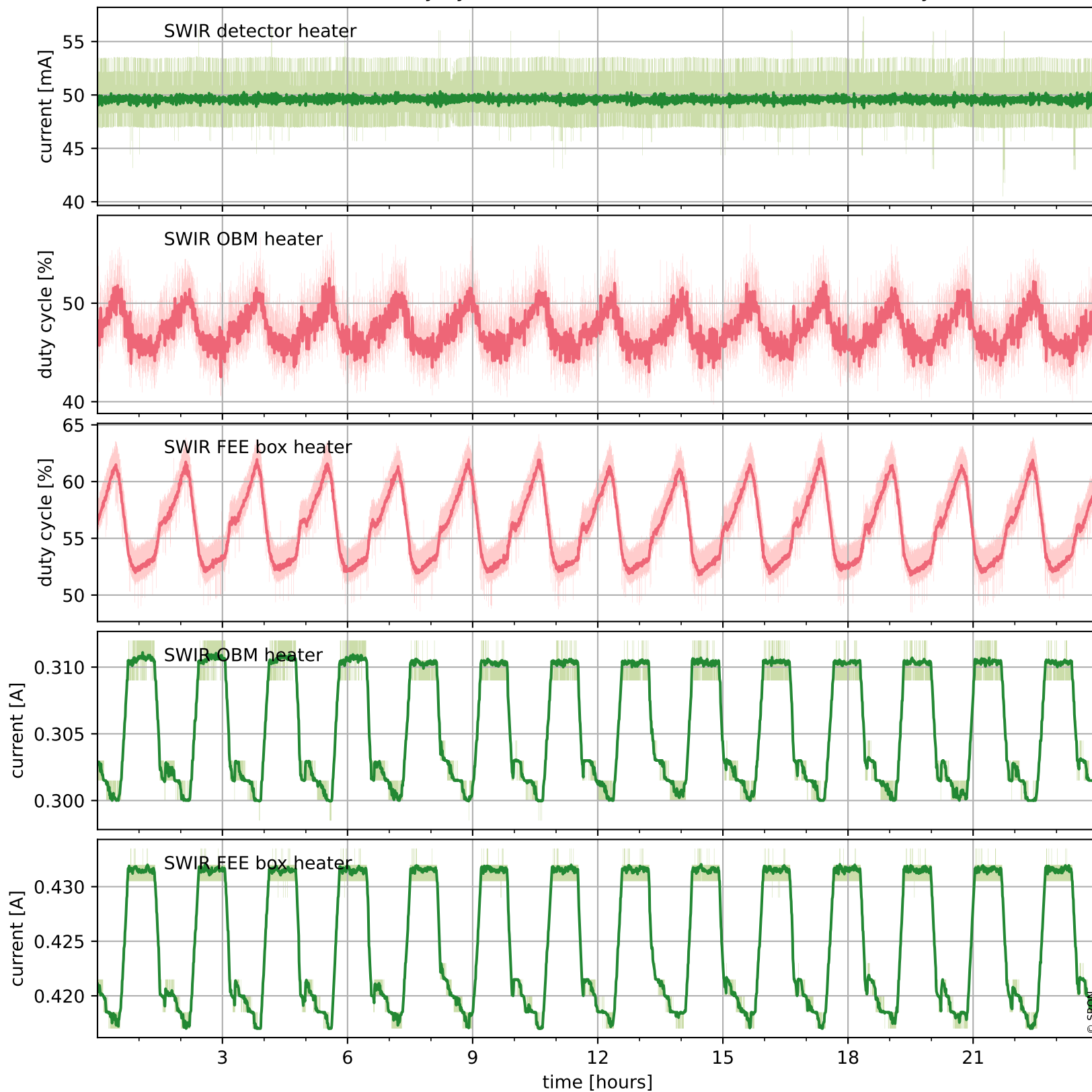
## Temperature of sensors relevant for SWIR (last month)



# Tropomi SWIR housekeeping data

orbits : [1002, 1016]  
coverage : 2017-12-23 / 2017-12-24  
created : 2023-08-21T08:24:40

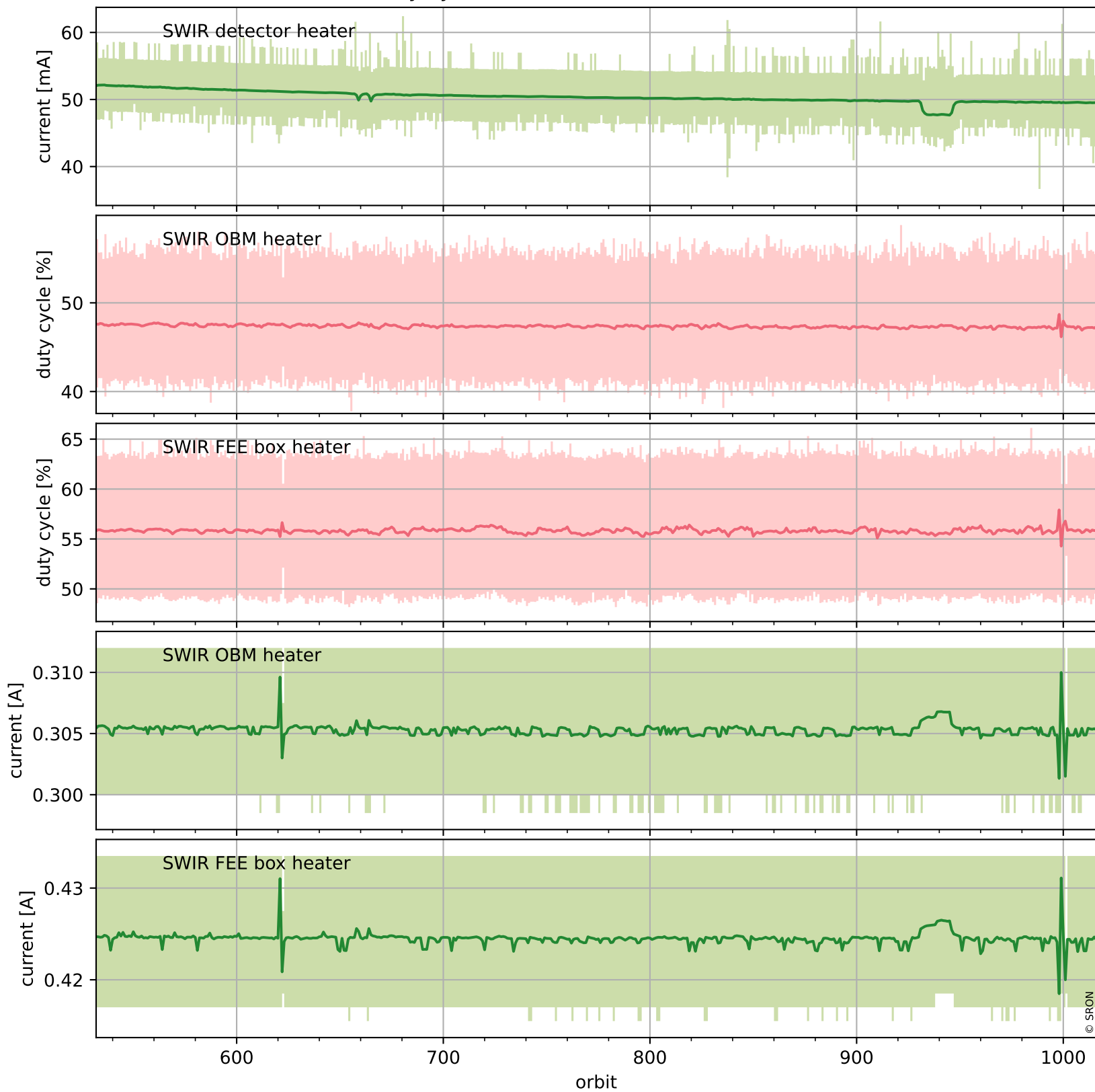
## Current and duty cycle of 3 heaters relevant for SWIR (one day)



# Tropomi SWIR housekeeping data

orbits : [532, 1016]  
coverage : 2017-11-19 / 2017-12-24  
created : 2023-08-21T08:24:41

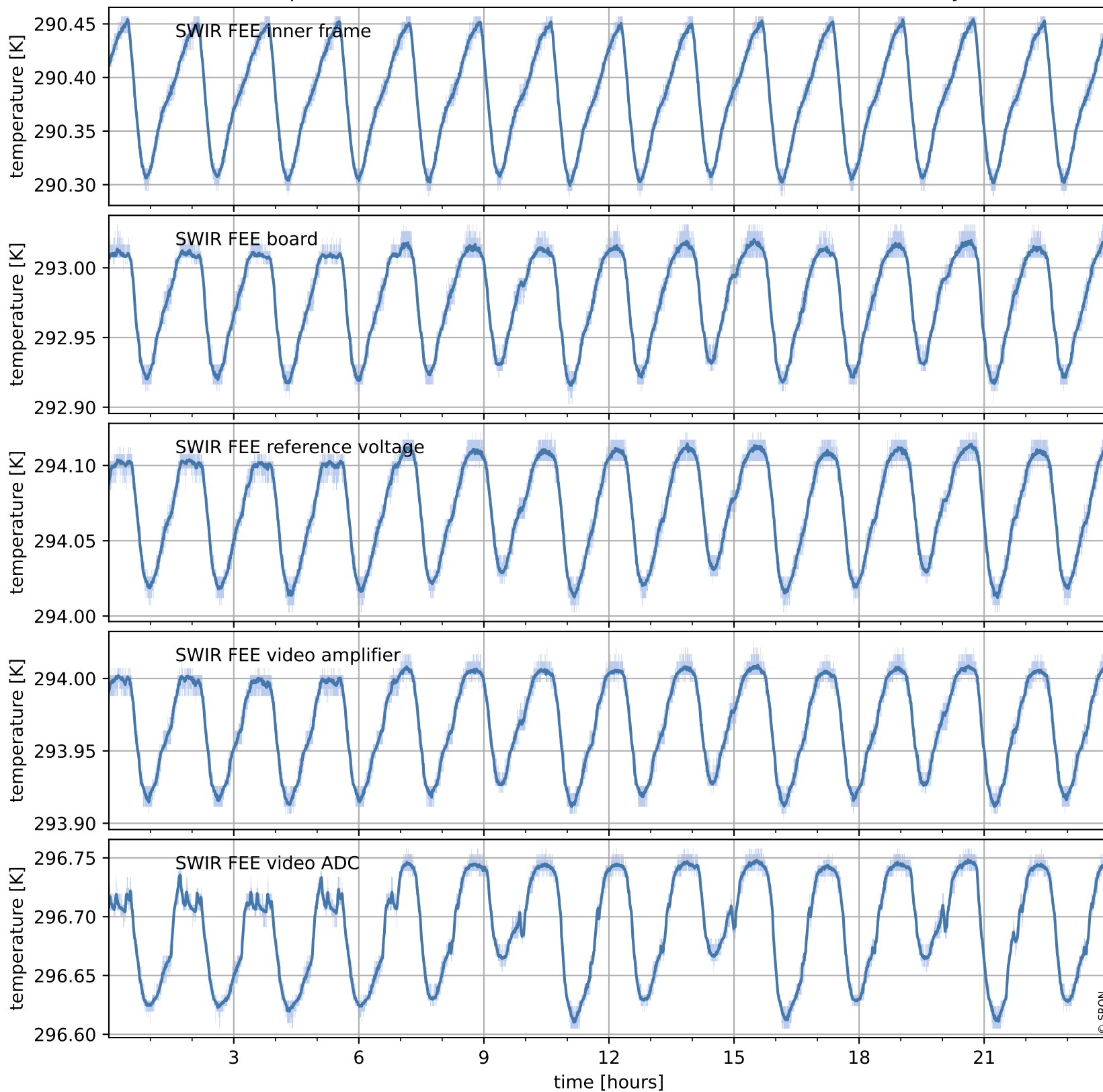
## Current and duty cycle of 3 heaters relevant for SWIR (last month)



# Tropomi SWIR housekeeping data

orbits : [1002, 1016]  
coverage : 2017-12-23 / 2017-12-24  
created : 2023-08-21T08:24:41

## Temperature of sensors at the SWIR front-end electronics (one day)



# Tropomi SWIR housekeeping data

orbits : [532, 1016]  
coverage : 2017-11-19 / 2017-12-24  
created : 2023-08-21T08:24:41

## Temperature of sensors at the SWIR front-end electronics (last month)

