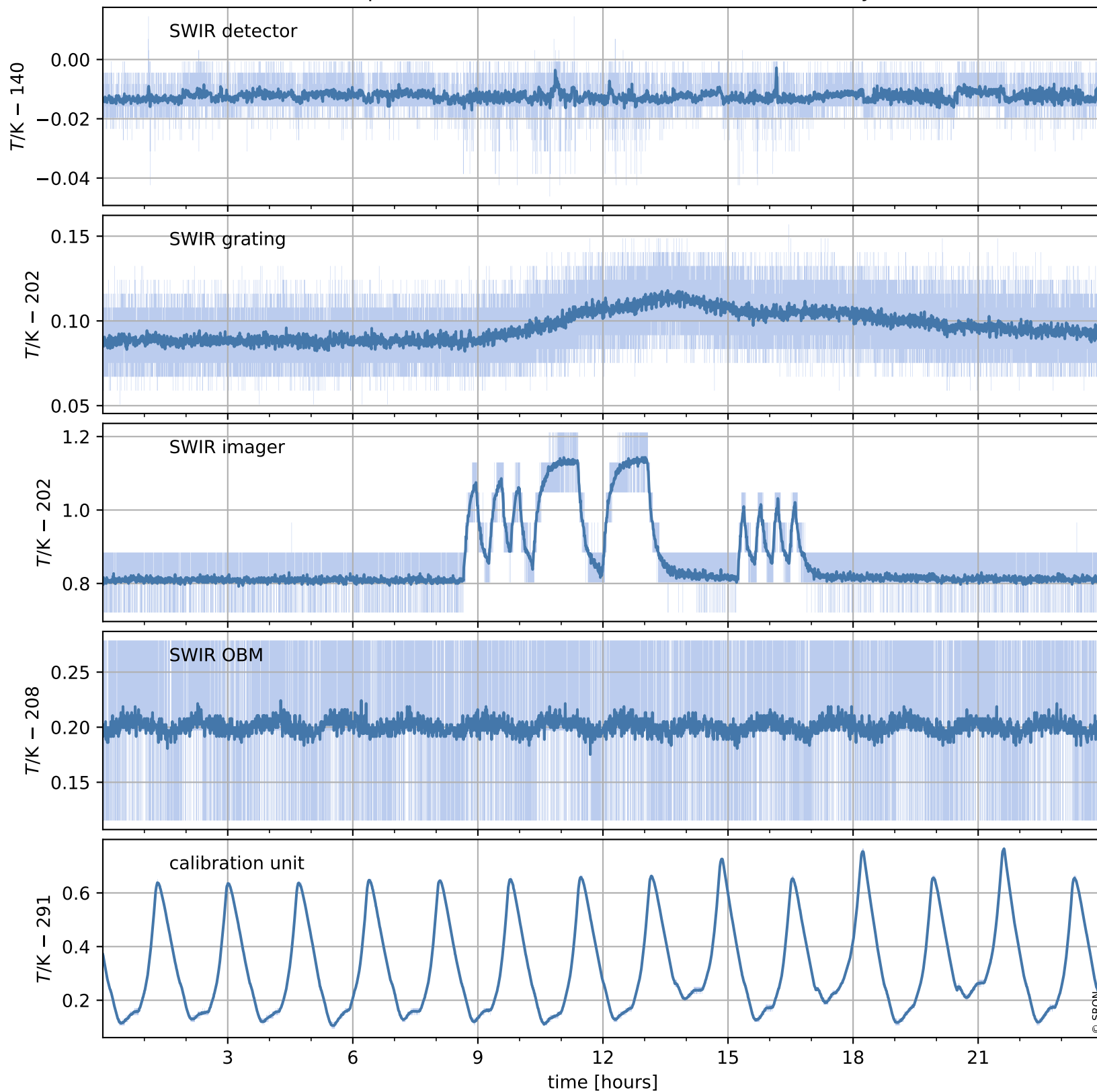


Tropomi SWIR housekeeping data

orbits : [1017, 1030]
coverage : 2017-12-24 / 2017-12-25
created : 2023-08-21T08:24:42

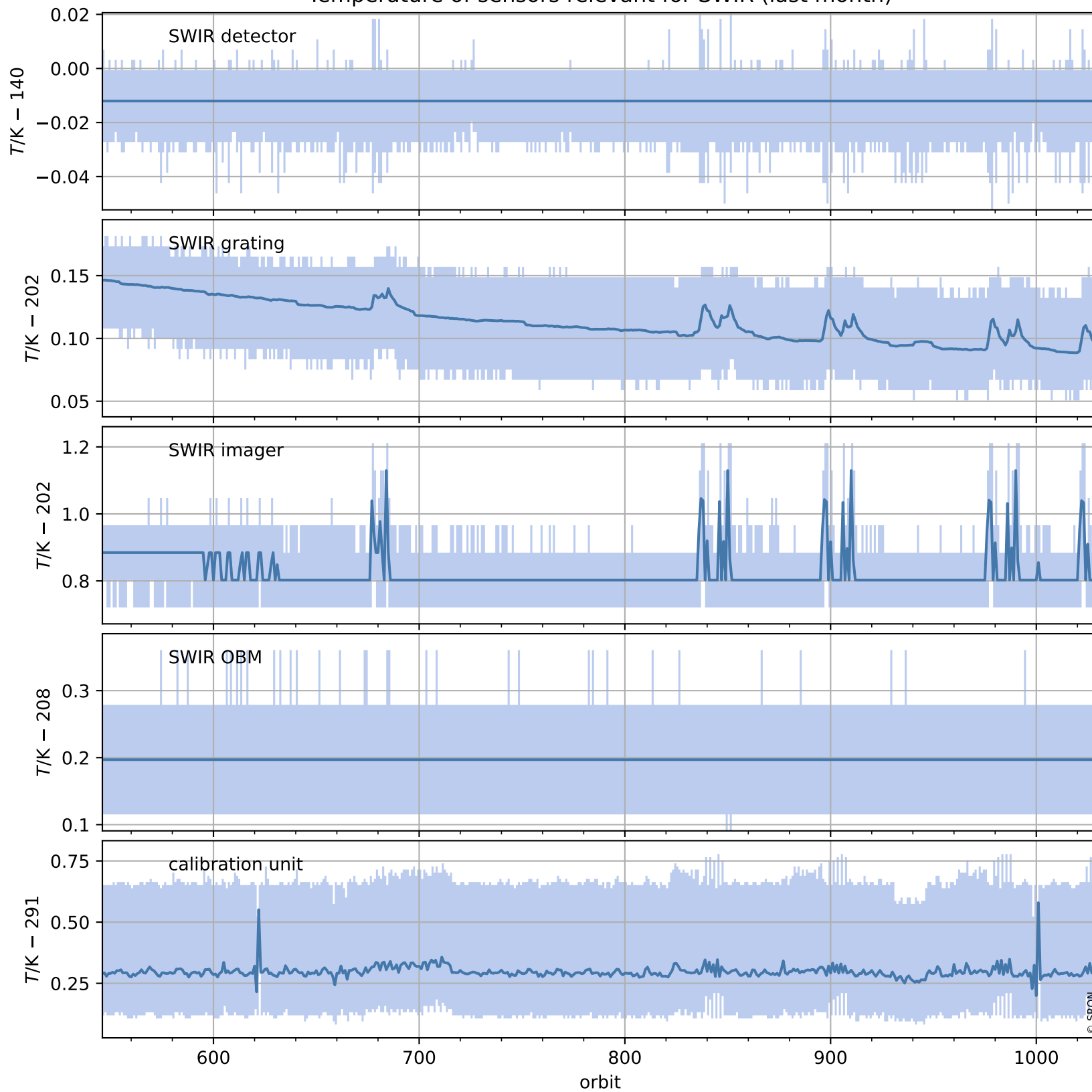
Temperature of sensors relevant for SWIR (one day)



Tropomi SWIR housekeeping data

orbits : [546, 1030]
coverage : 2017-11-20 / 2017-12-25
created : 2023-08-21T08:24:42

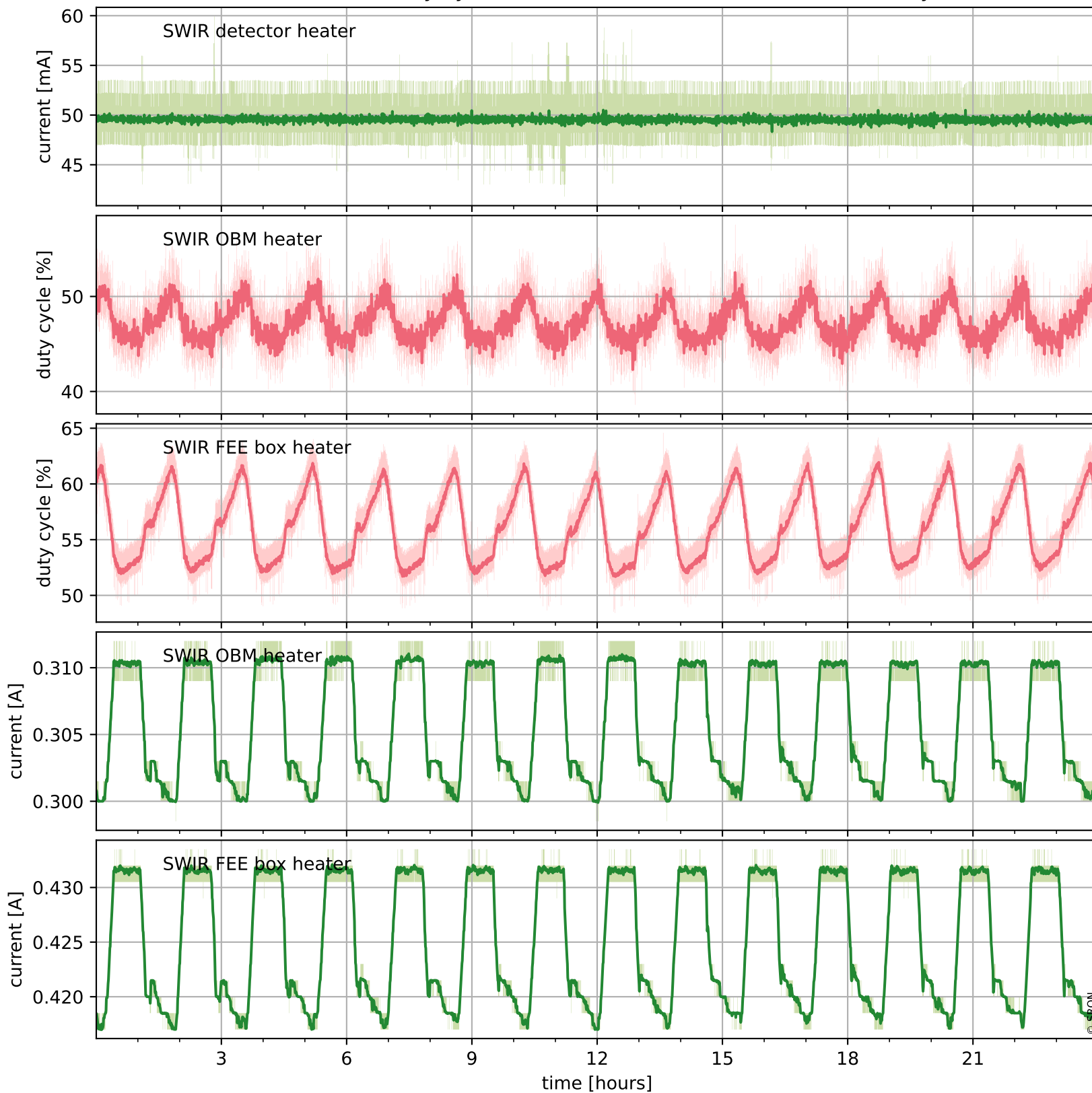
Temperature of sensors relevant for SWIR (last month)



Tropomi SWIR housekeeping data

orbits : [1017, 1030]
coverage : 2017-12-24 / 2017-12-25
created : 2023-08-21T08:24:43

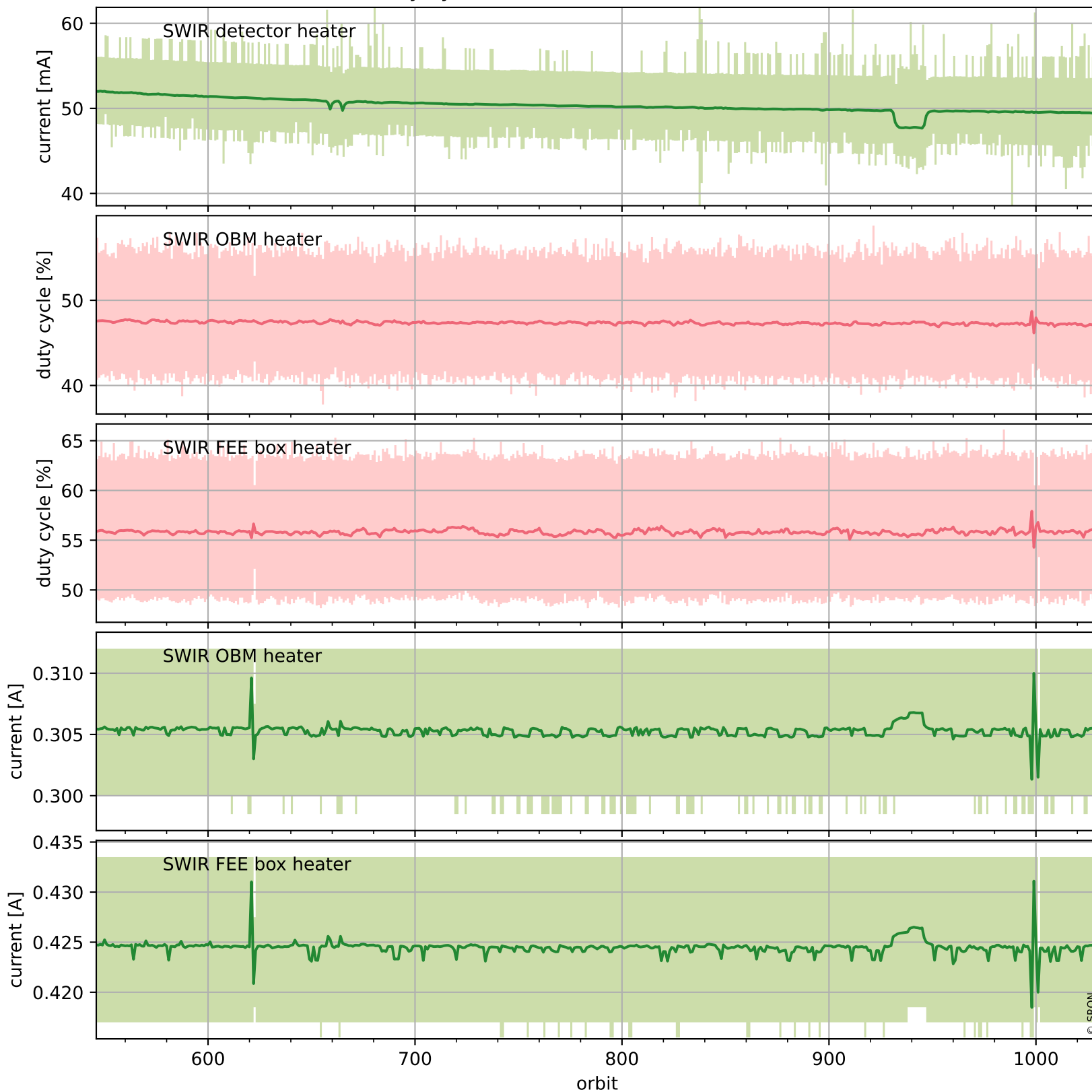
Current and duty cycle of 3 heaters relevant for SWIR (one day)



Tropomi SWIR housekeeping data

orbits : [546, 1030]
coverage : 2017-11-20 / 2017-12-25
created : 2023-08-21T08:24:43

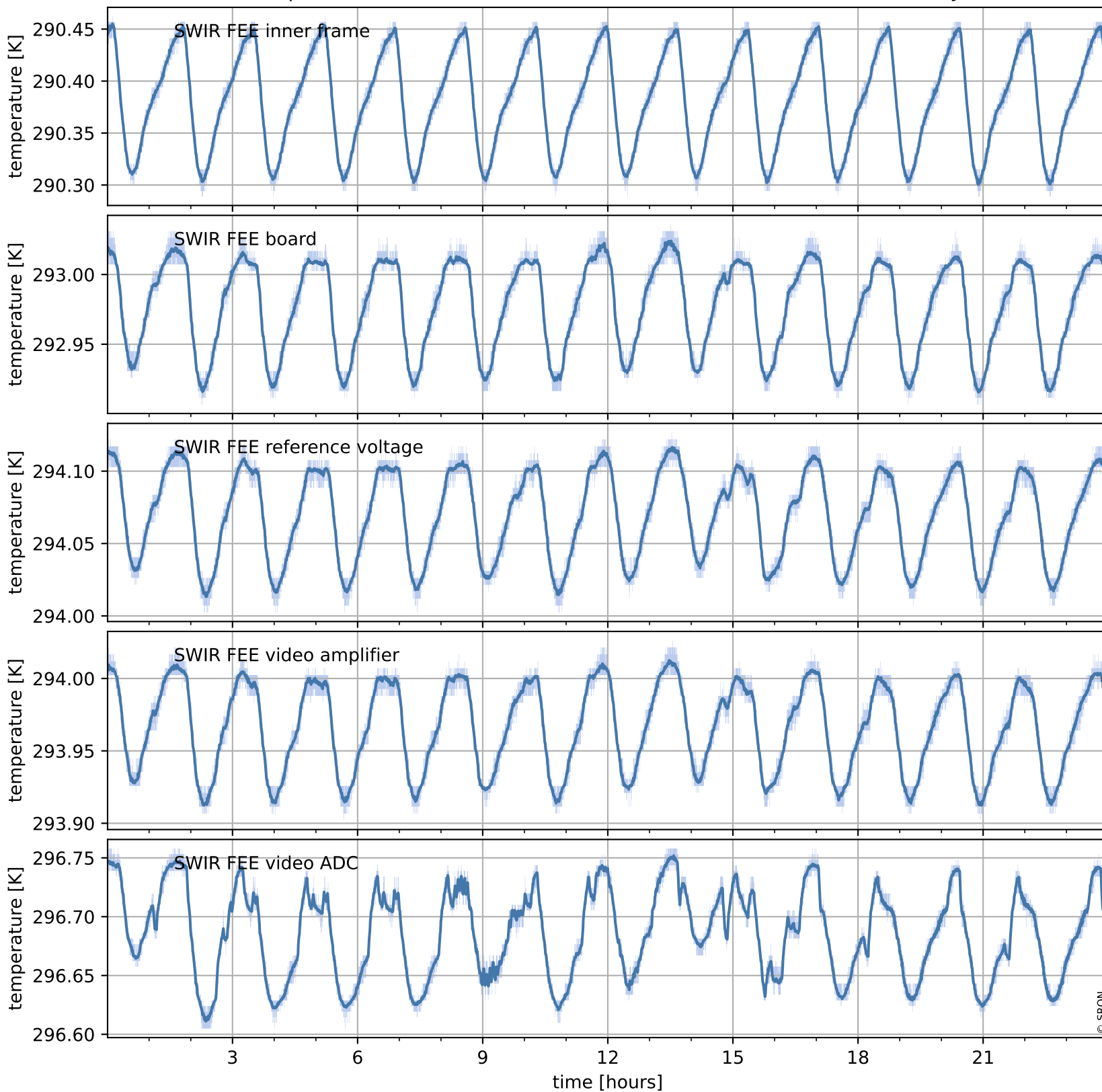
Current and duty cycle of 3 heaters relevant for SWIR (last month)



Tropomi SWIR housekeeping data

orbits : [1017, 1030]
coverage : 2017-12-24 / 2017-12-25
created : 2023-08-21T08:24:43

Temperature of sensors at the SWIR front-end electronics (one day)



Tropomi SWIR housekeeping data

orbits : [546, 1030]
coverage : 2017-11-20 / 2017-12-25
created : 2023-08-21T08:24:44

Temperature of sensors at the SWIR front-end electronics (last month)

