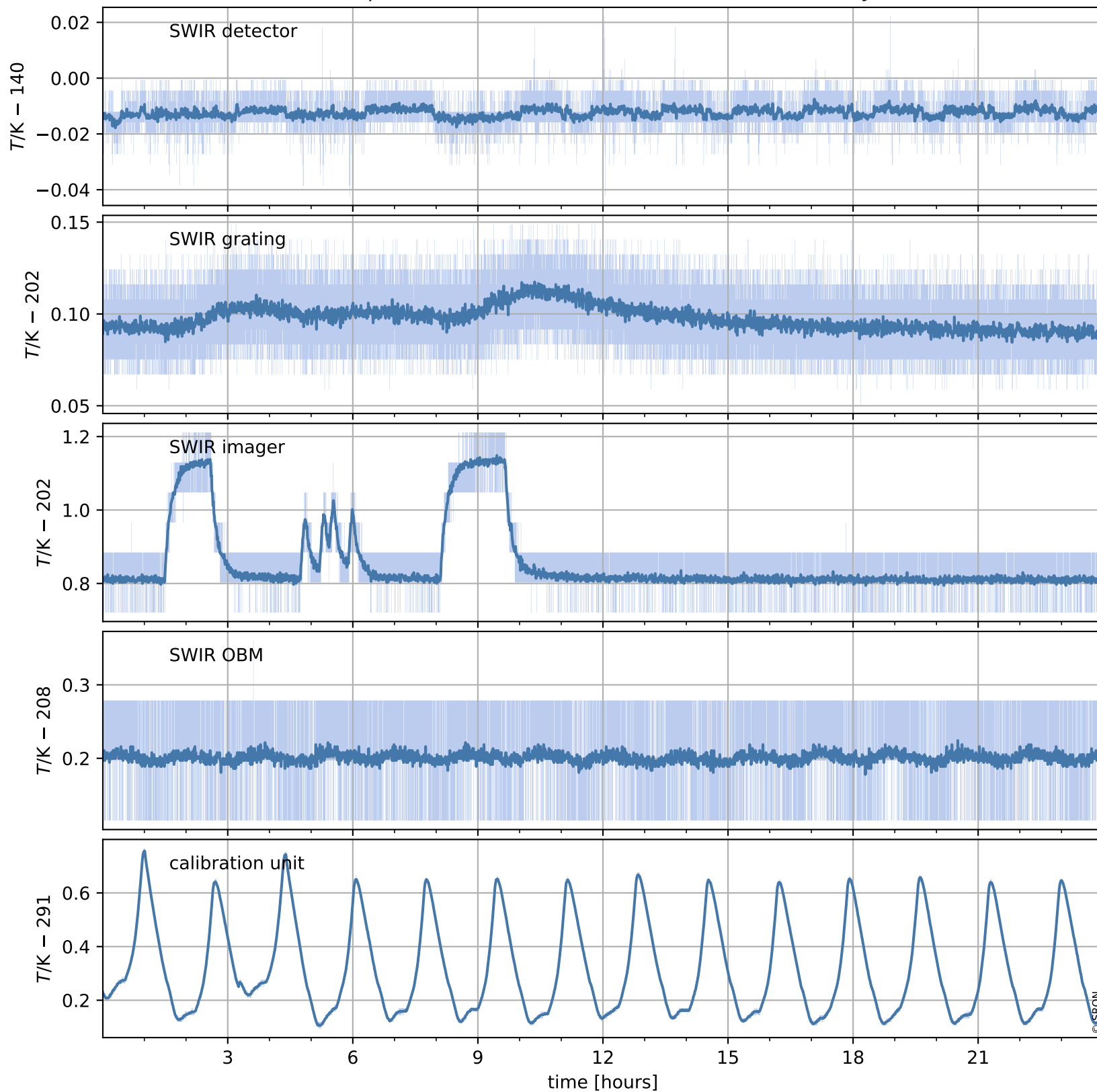


# Tropomi SWIR housekeeping data

orbits : [1031, 1044]  
coverage : 2017-12-25 / 2017-12-26  
created : 2023-08-21T08:24:44

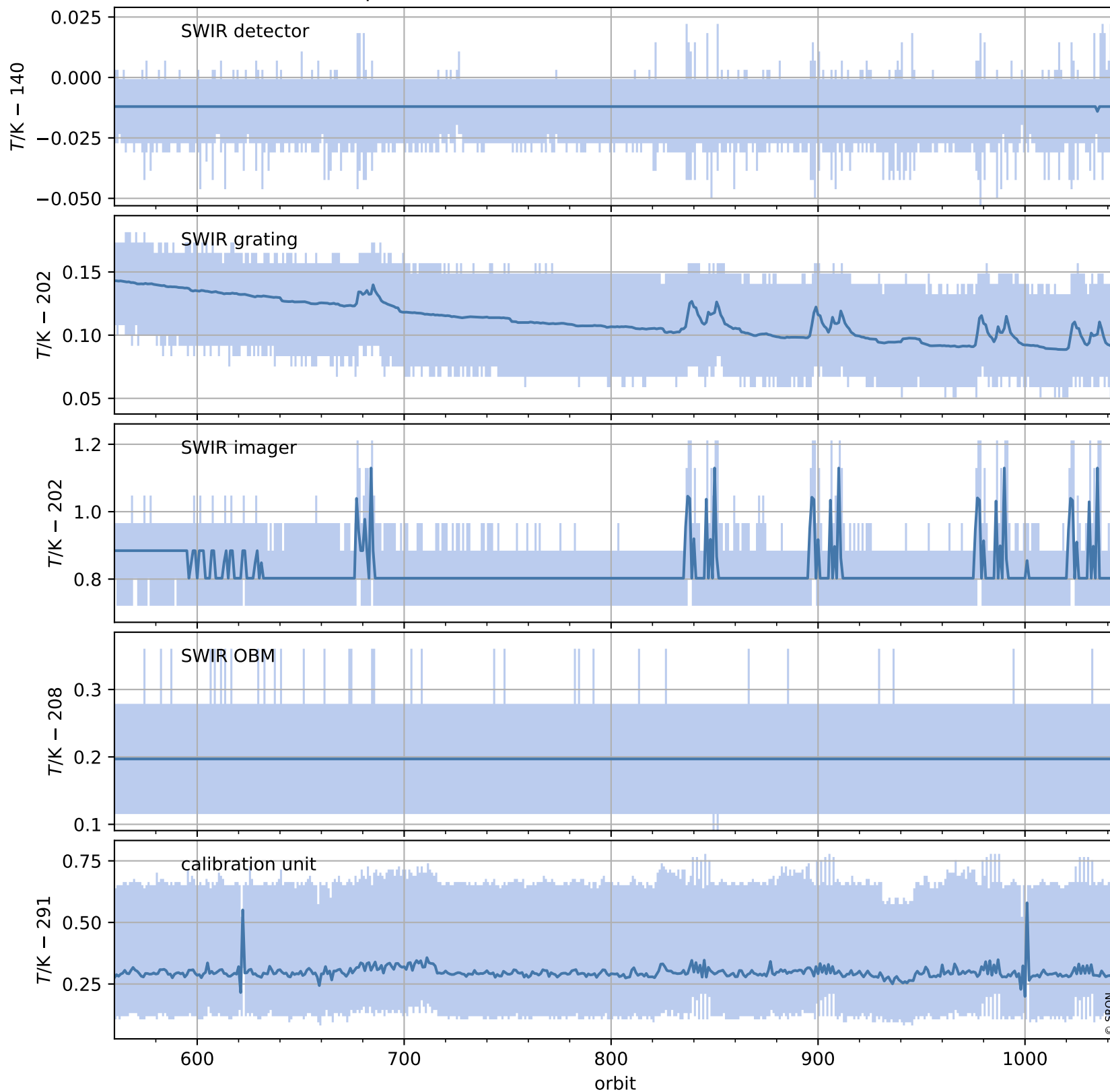
## Temperature of sensors relevant for SWIR (one day)



# Tropomi SWIR housekeeping data

orbits : [560, 1044]  
coverage : 2017-11-21 / 2017-12-26  
created : 2023-08-21T08:24:45

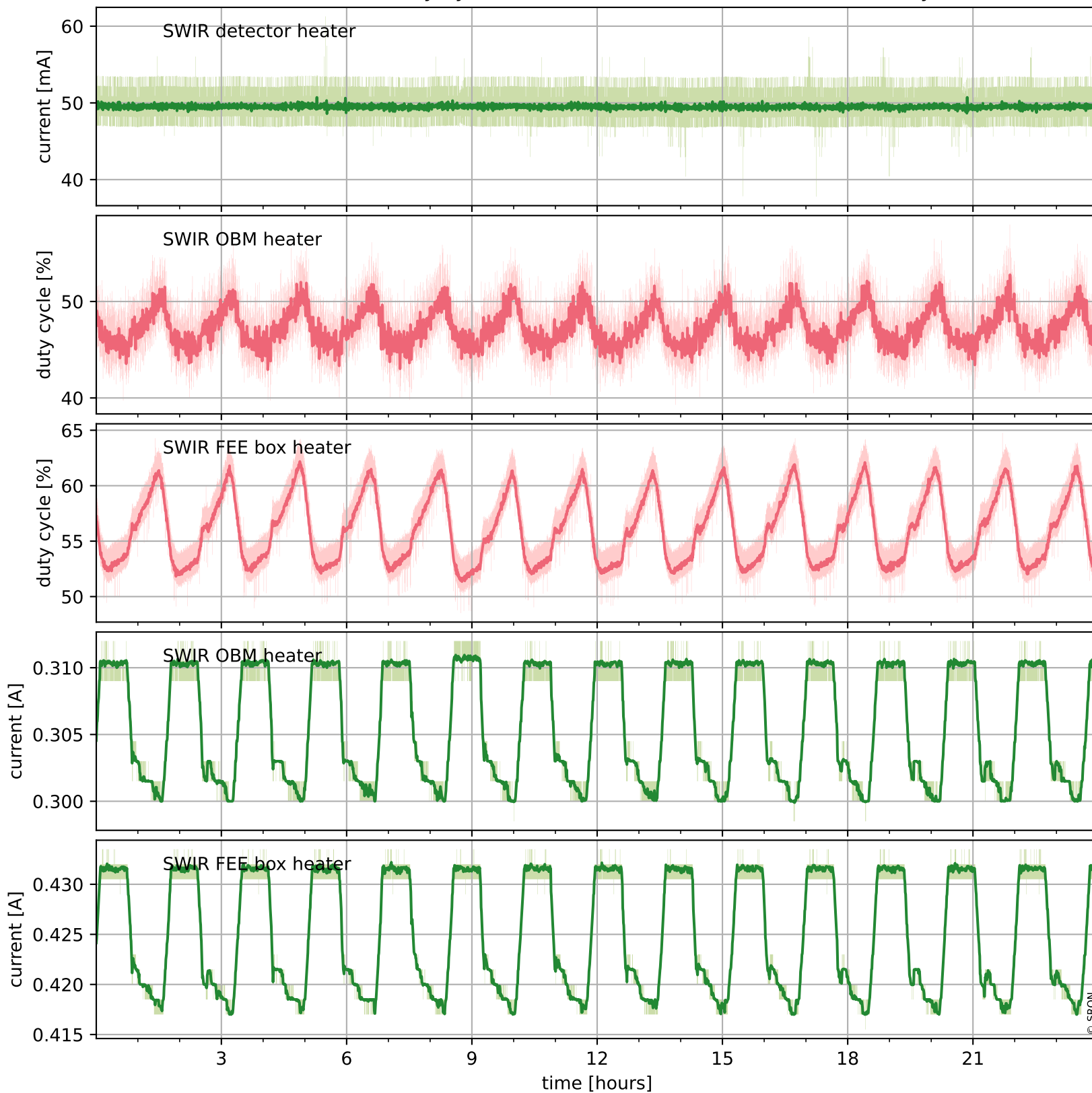
## Temperature of sensors relevant for SWIR (last month)



# Tropomi SWIR housekeeping data

orbits : [1031, 1044]  
coverage : 2017-12-25 / 2017-12-26  
created : 2023-08-21T08:24:45

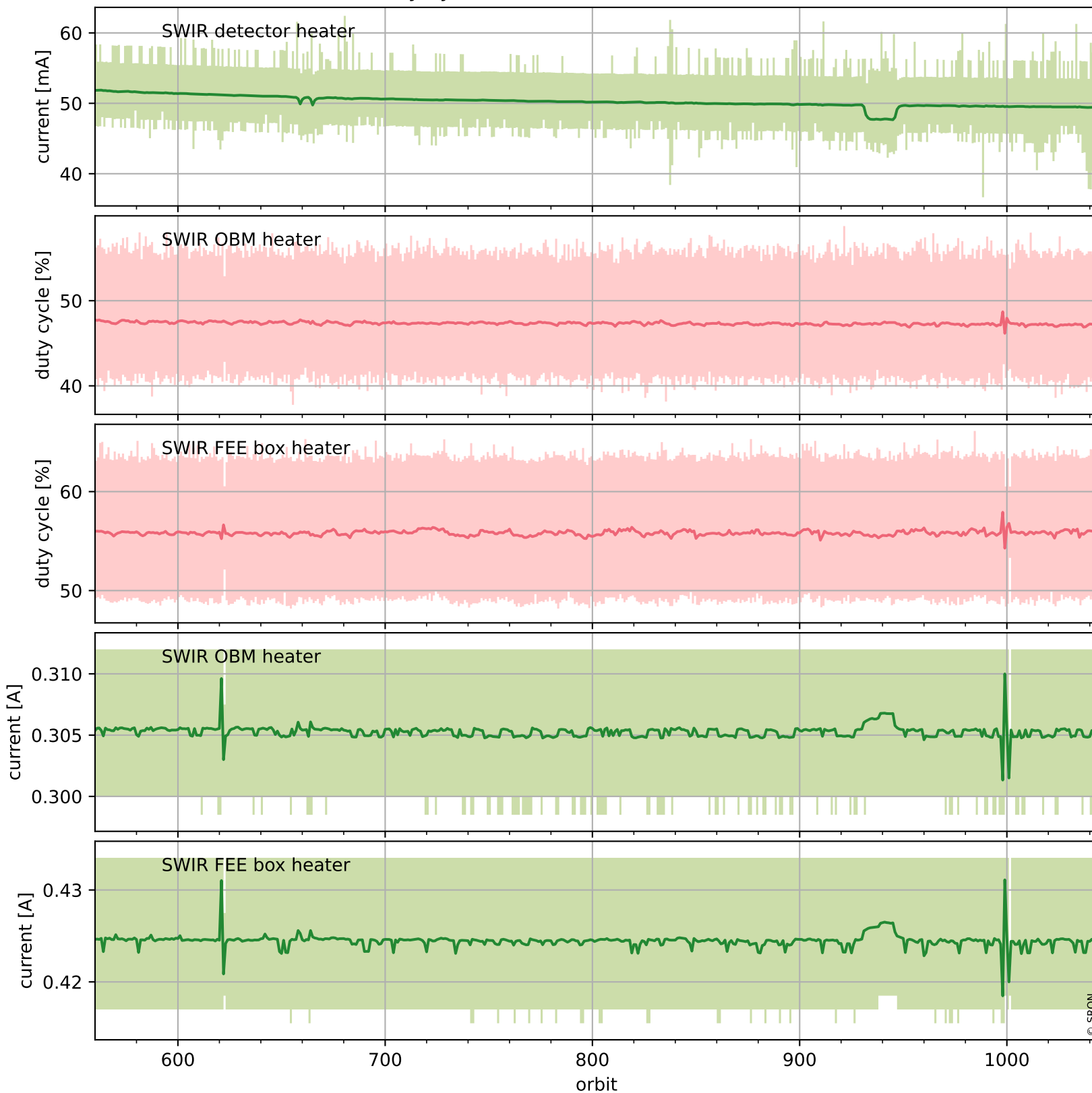
## Current and duty cycle of 3 heaters relevant for SWIR (one day)



# Tropomi SWIR housekeeping data

orbits : [560, 1044]  
coverage : 2017-11-21 / 2017-12-26  
created : 2023-08-21T08:24:45

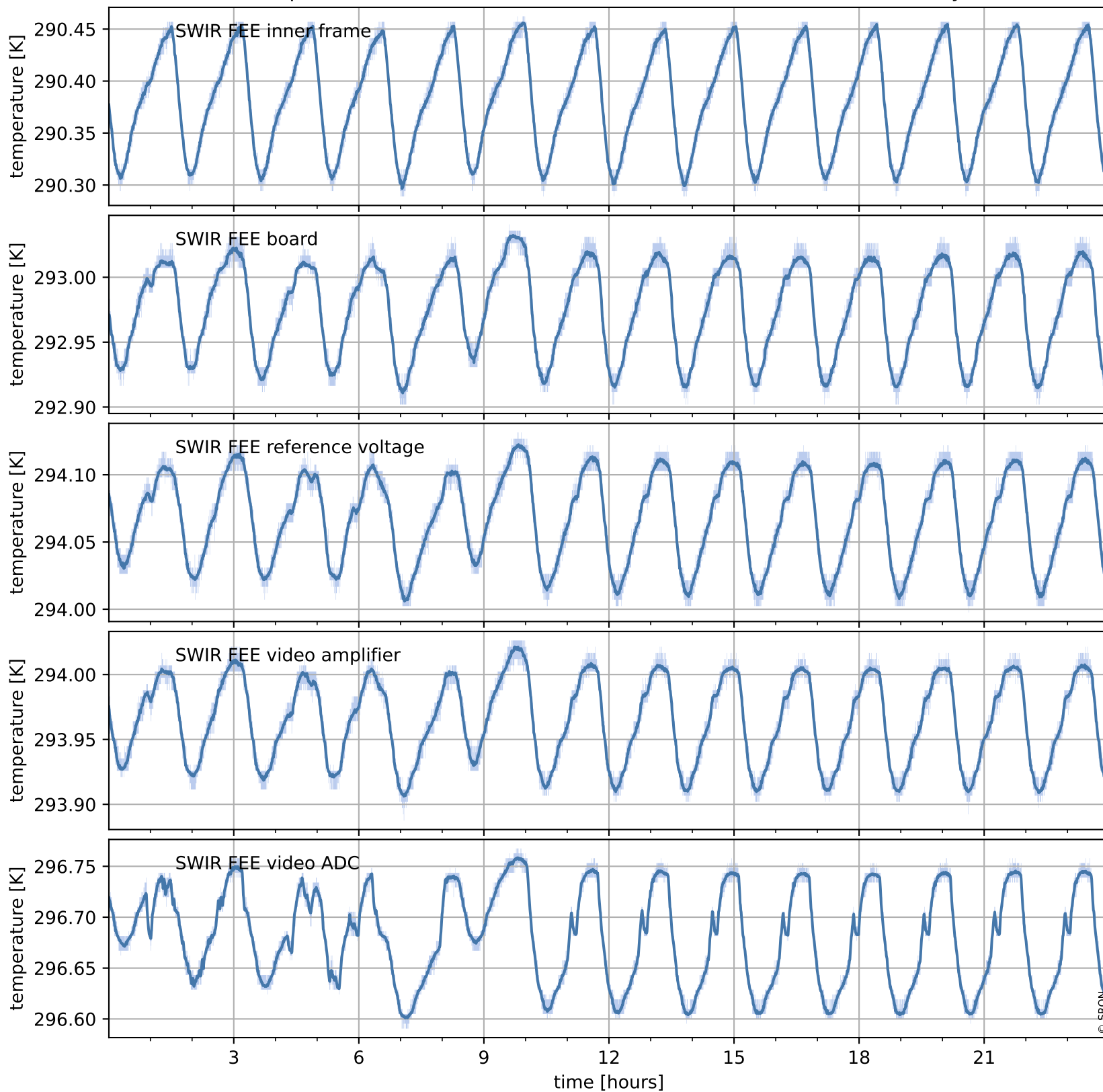
## Current and duty cycle of 3 heaters relevant for SWIR (last month)



# Tropomi SWIR housekeeping data

orbits : [1031, 1044]  
coverage : 2017-12-25 / 2017-12-26  
created : 2023-08-21T08:24:46

## Temperature of sensors at the SWIR front-end electronics (one day)



# Tropomi SWIR housekeeping data

orbits : [560, 1044]  
coverage : 2017-11-21 / 2017-12-26  
created : 2023-08-21T08:24:46

## Temperature of sensors at the SWIR front-end electronics (last month)

