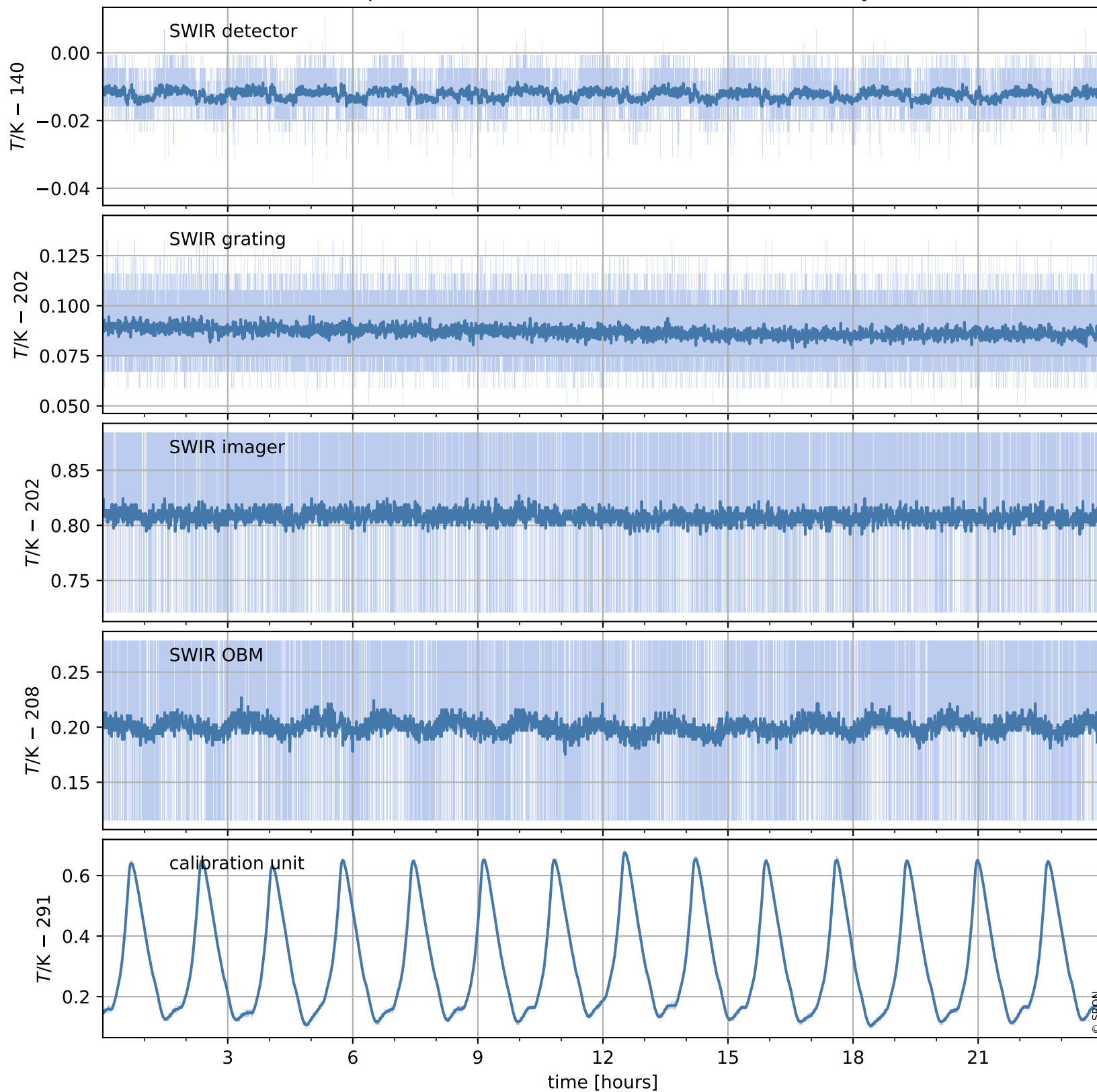


Tropomi SWIR housekeeping data

orbits : [1045, 1058]
coverage : 2017-12-26 / 2017-12-27
created : 2023-08-21T08:24:47

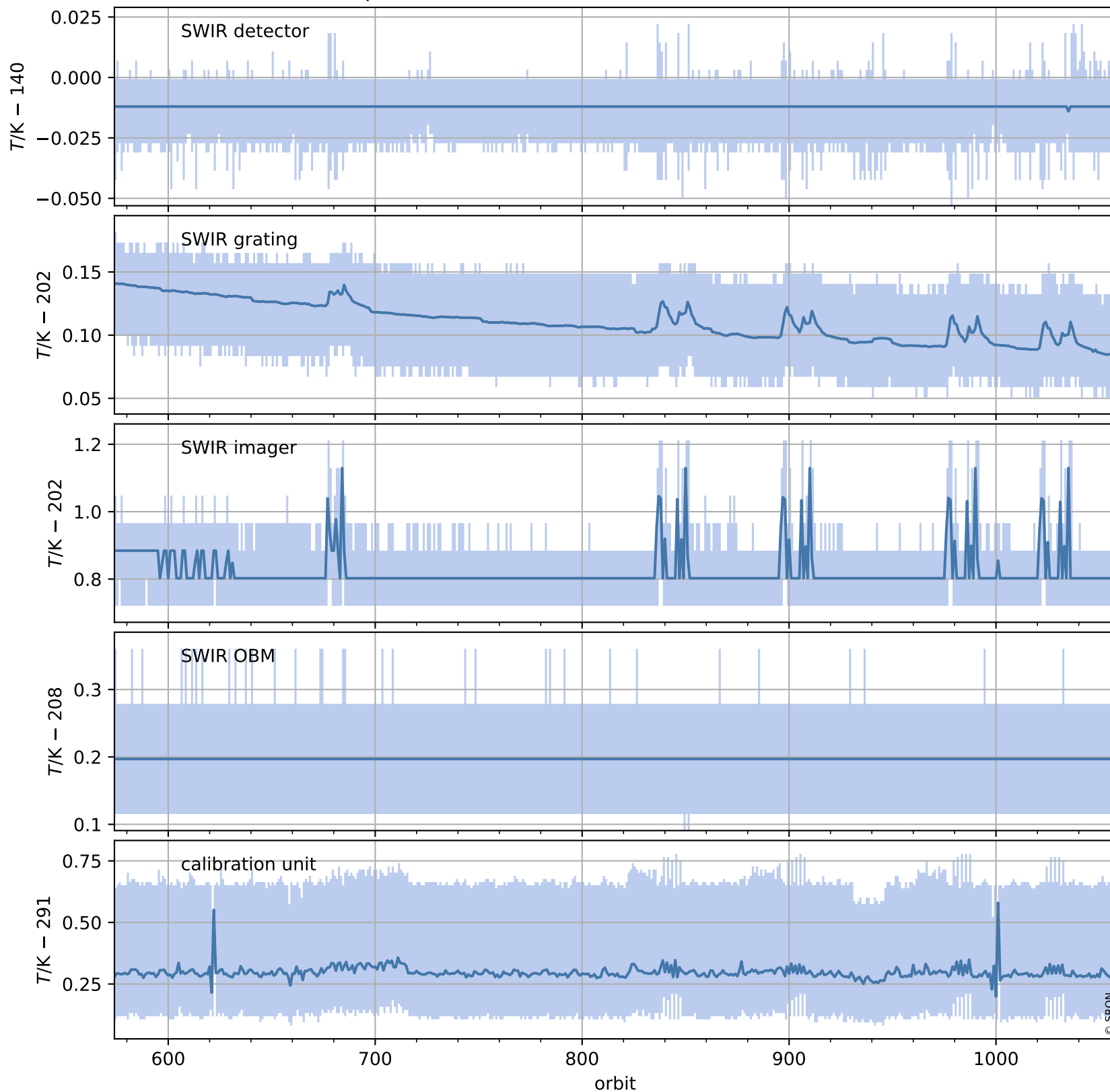
Temperature of sensors relevant for SWIR (one day)



Tropomi SWIR housekeeping data

orbits : [574, 1058]
coverage : 2017-11-22 / 2017-12-27
created : 2023-08-21T08:24:47

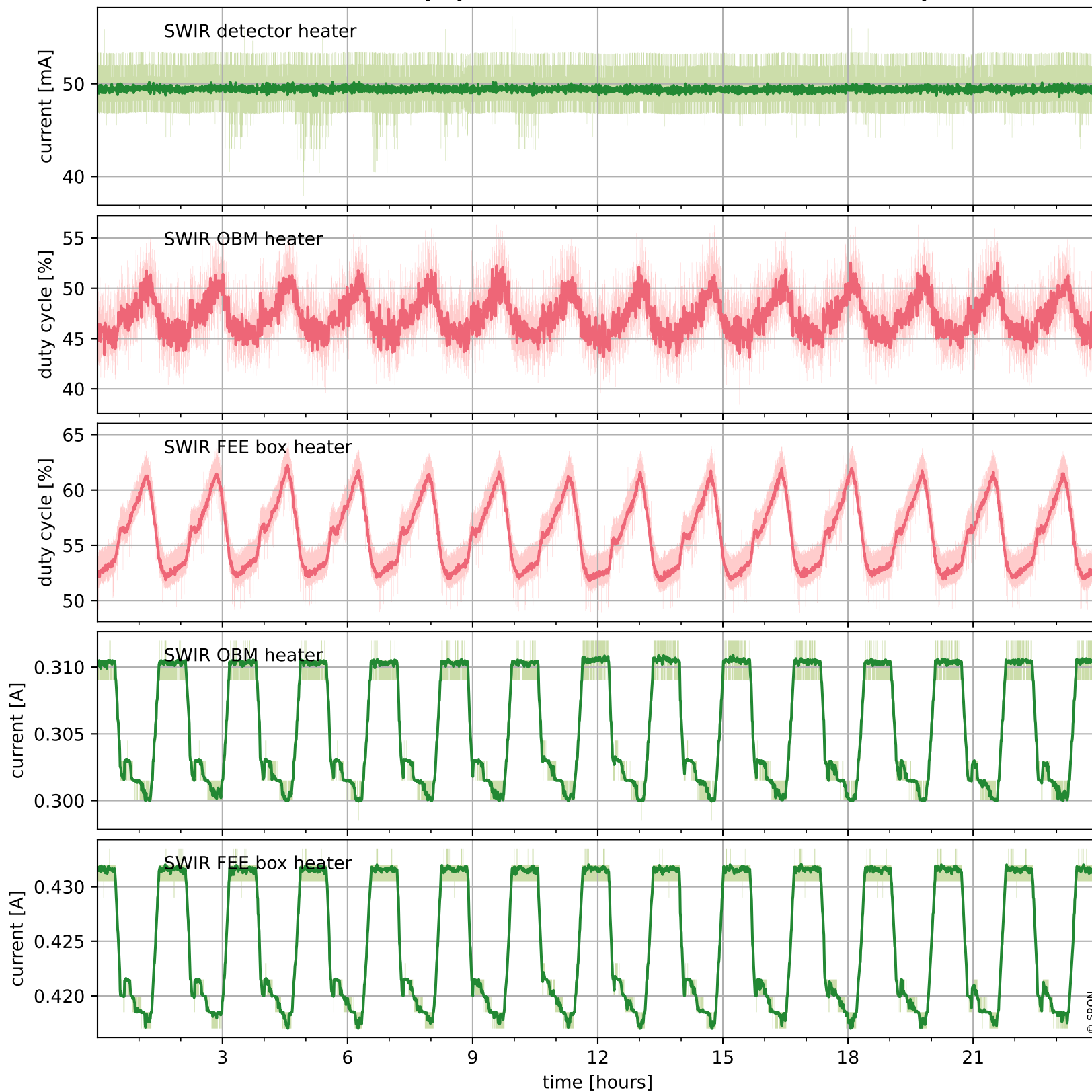
Temperature of sensors relevant for SWIR (last month)



Tropomi SWIR housekeeping data

orbits : [1045, 1058]
coverage : 2017-12-26 / 2017-12-27
created : 2023-08-21T08:24:47

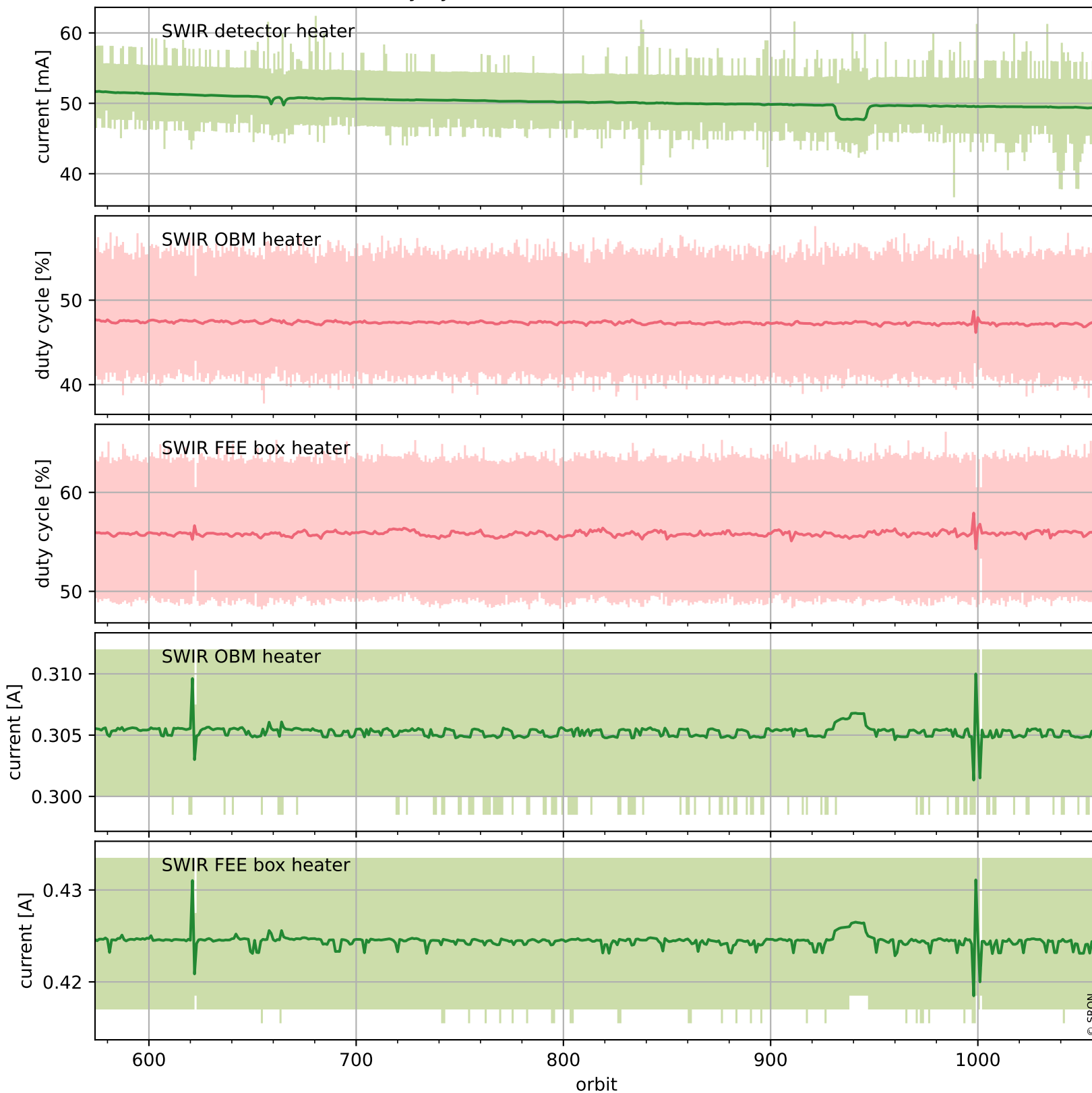
Current and duty cycle of 3 heaters relevant for SWIR (one day)



Tropomi SWIR housekeeping data

orbits : [574, 1058]
coverage : 2017-11-22 / 2017-12-27
created : 2023-08-21T08:24:48

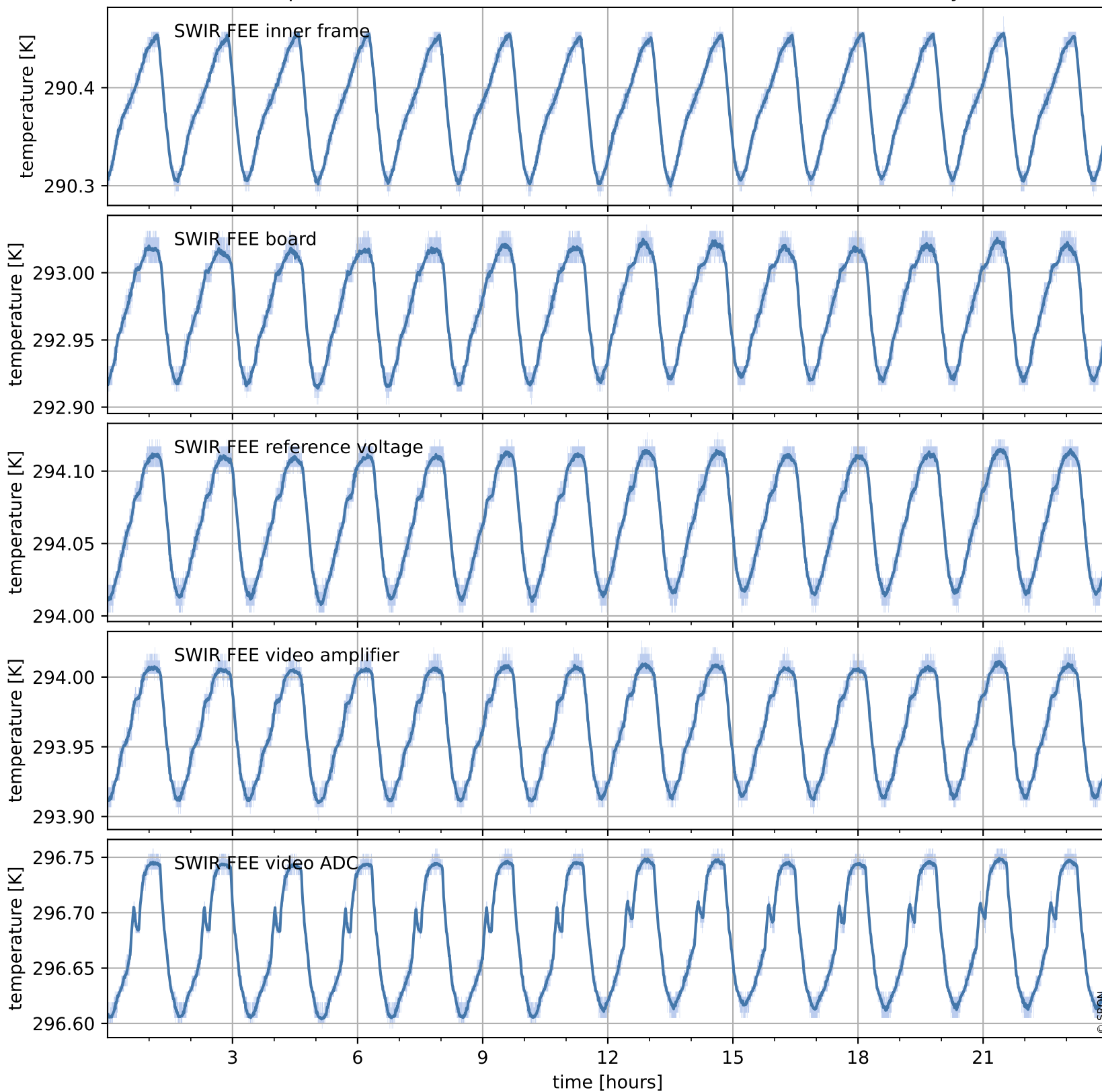
Current and duty cycle of 3 heaters relevant for SWIR (last month)



Tropomi SWIR housekeeping data

orbits : [1045, 1058]
coverage : 2017-12-26 / 2017-12-27
created : 2023-08-21T08:24:48

Temperature of sensors at the SWIR front-end electronics (one day)



Tropomi SWIR housekeeping data

orbits : [574, 1058]
coverage : 2017-11-22 / 2017-12-27
created : 2023-08-21T08:24:48

Temperature of sensors at the SWIR front-end electronics (last month)

