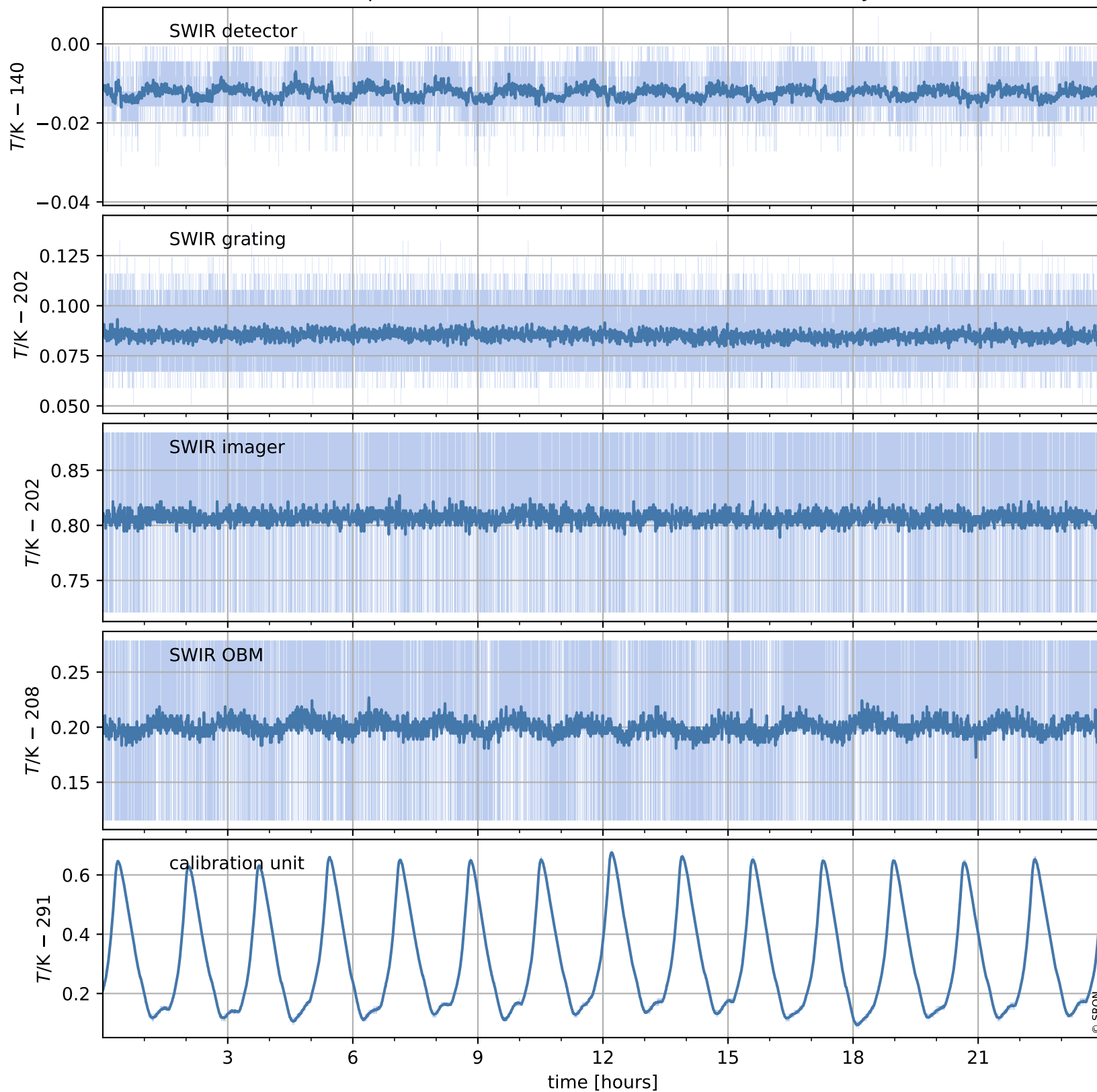


# Tropomi SWIR housekeeping data

orbits : [1059, 1072]  
coverage : 2017-12-27 / 2017-12-28  
created : 2023-08-21T08:24:49

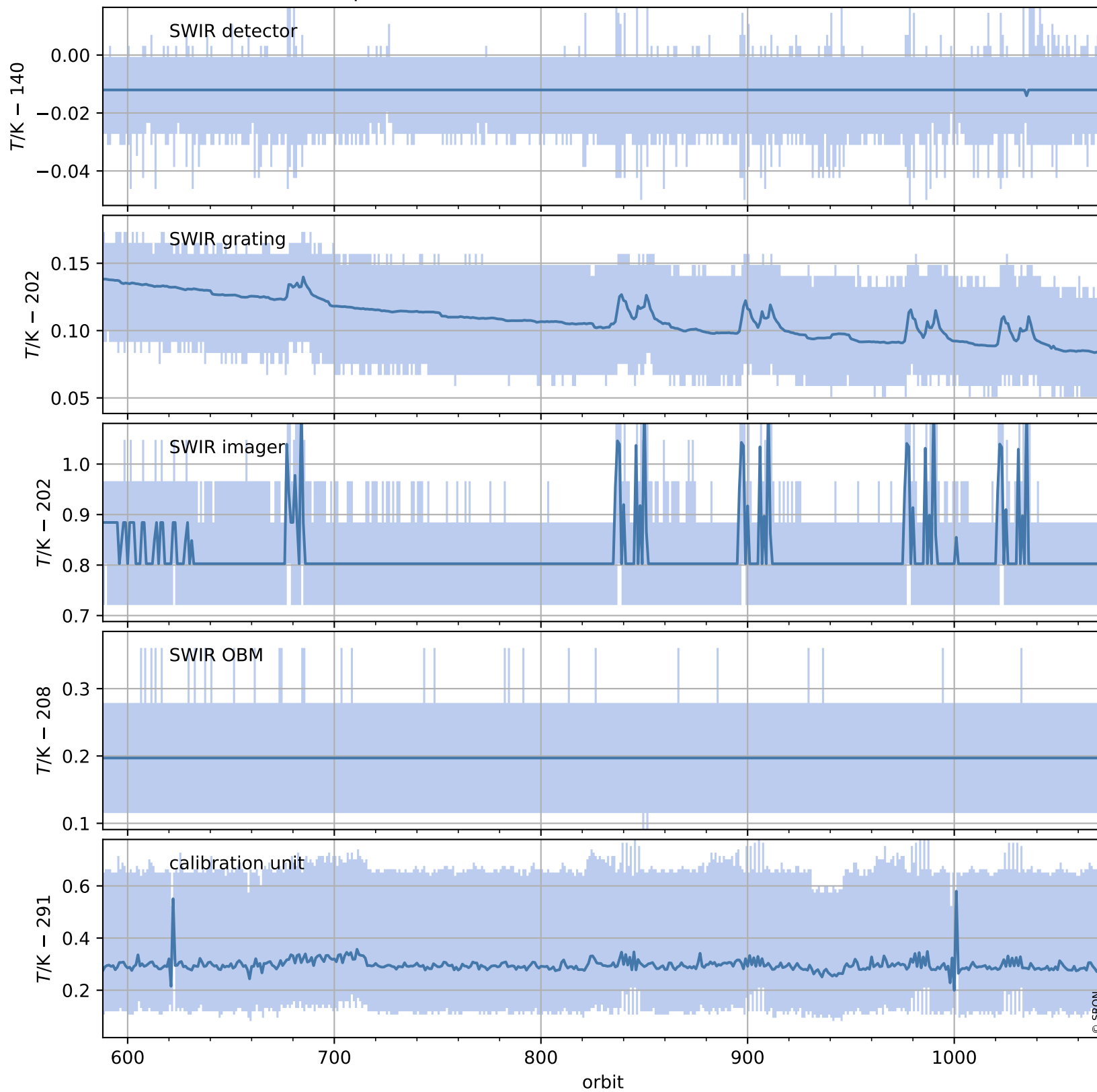
## Temperature of sensors relevant for SWIR (one day)



# Tropomi SWIR housekeeping data

orbits : [588, 1072]  
coverage : 2017-11-23 / 2017-12-28  
created : 2023-08-21T08:24:49

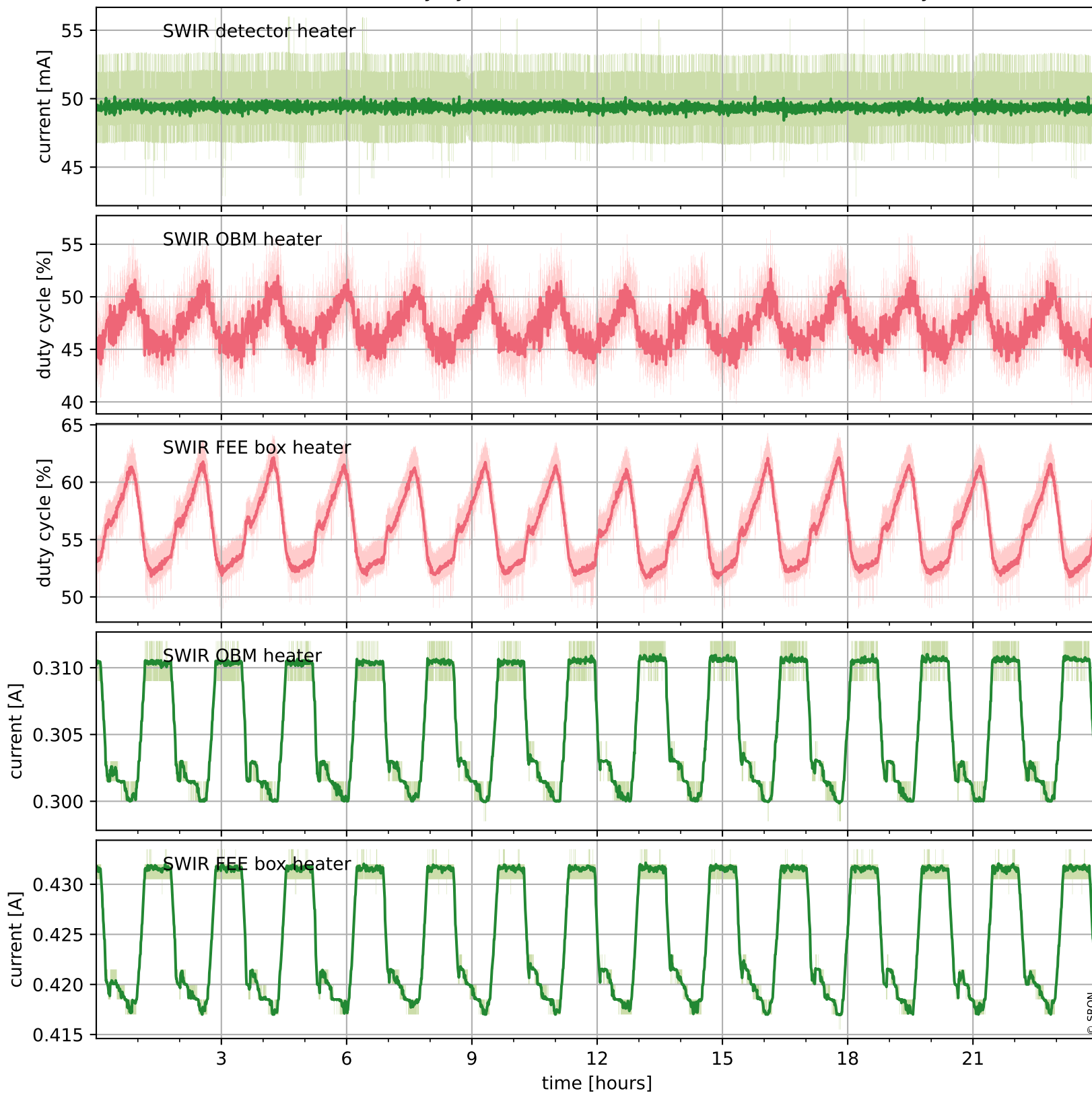
## Temperature of sensors relevant for SWIR (last month)



# Tropomi SWIR housekeeping data

orbits : [1059, 1072]  
coverage : 2017-12-27 / 2017-12-28  
created : 2023-08-21T08:24:50

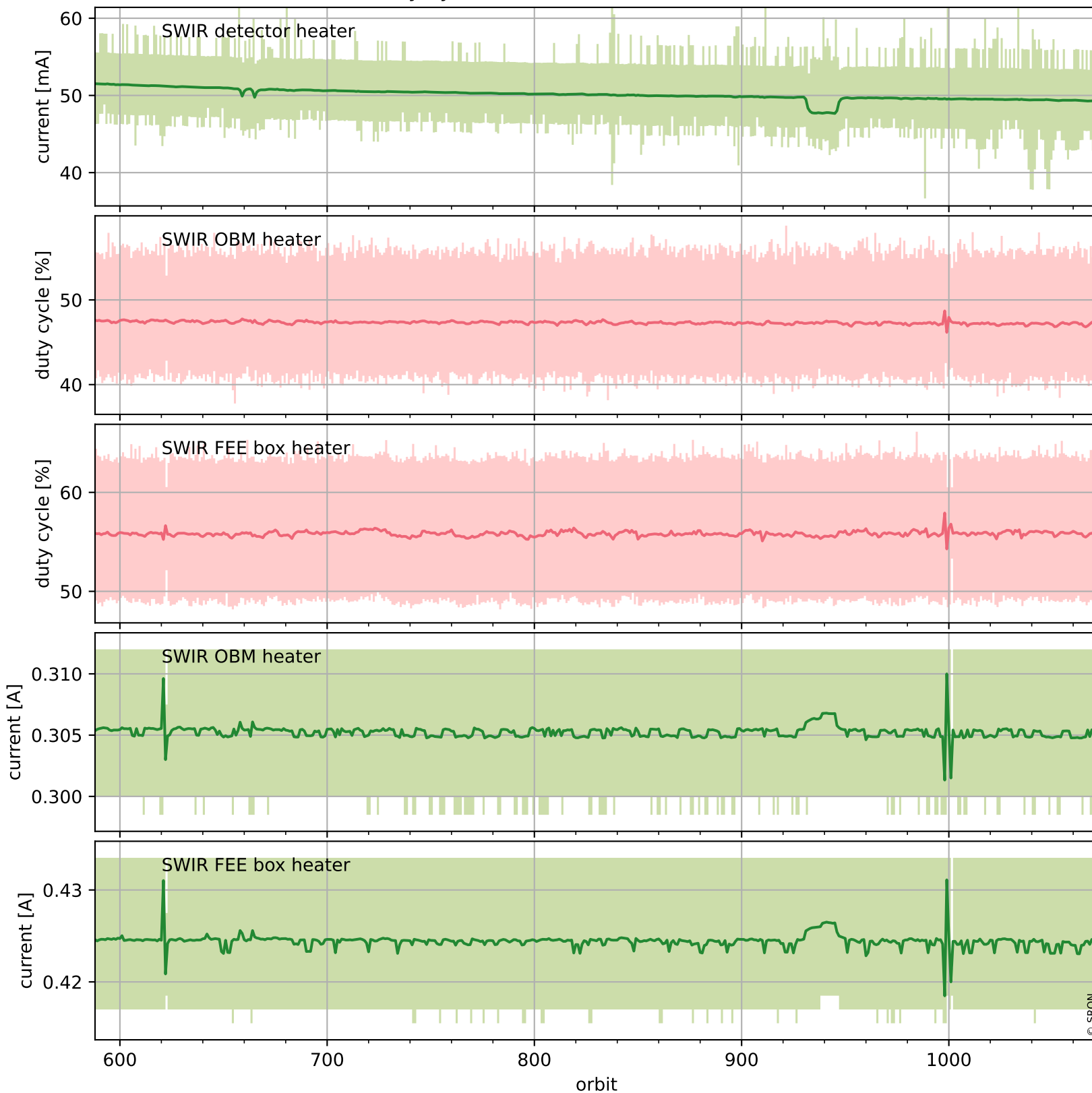
## Current and duty cycle of 3 heaters relevant for SWIR (one day)



# Tropomi SWIR housekeeping data

orbits : [588, 1072]  
coverage : 2017-11-23 / 2017-12-28  
created : 2023-08-21T08:24:50

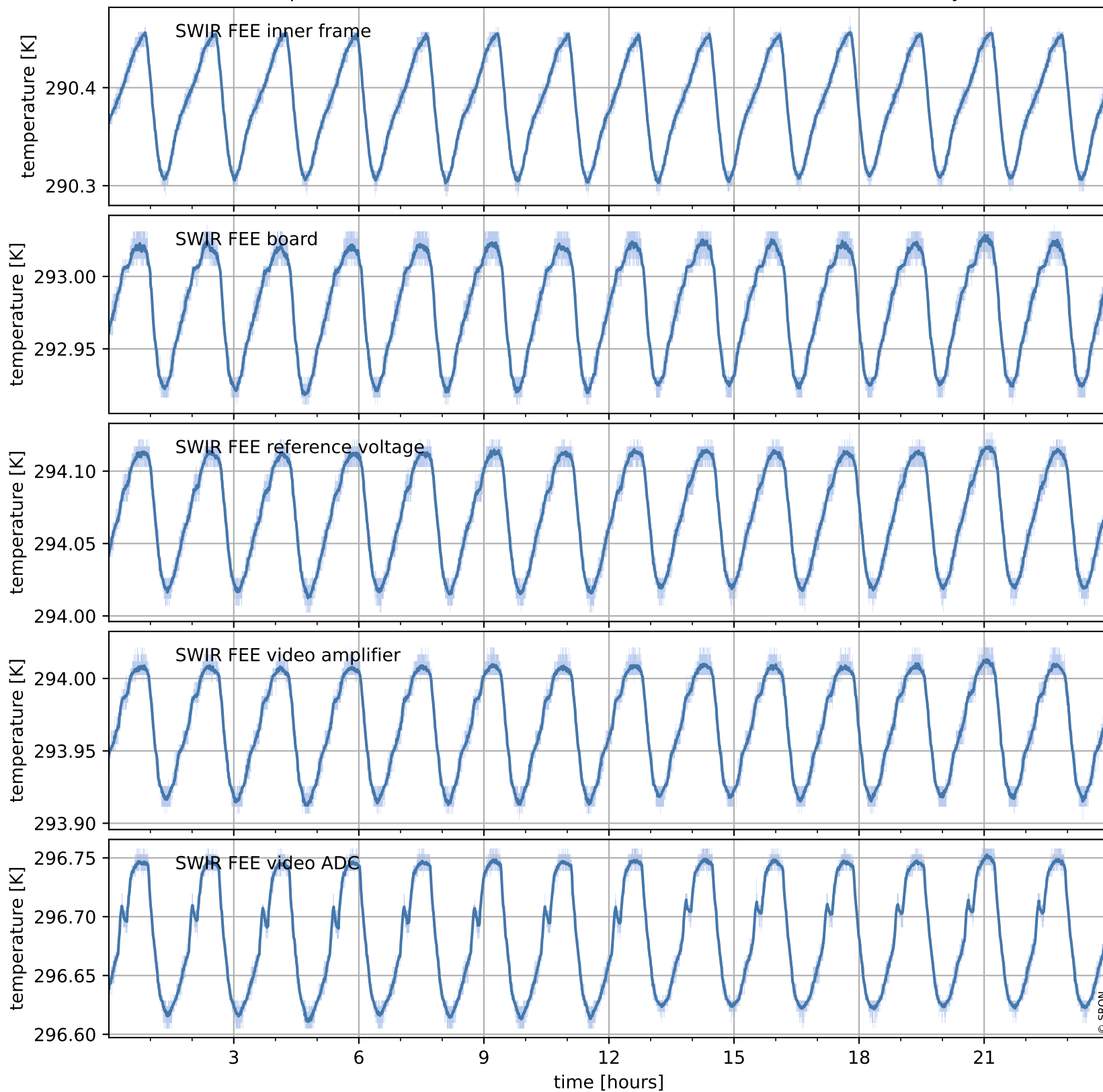
## Current and duty cycle of 3 heaters relevant for SWIR (last month)



# Tropomi SWIR housekeeping data

orbits : [1059, 1072]  
coverage : 2017-12-27 / 2017-12-28  
created : 2023-08-21T08:24:50

## Temperature of sensors at the SWIR front-end electronics (one day)



# Tropomi SWIR housekeeping data

orbits : [588, 1072]  
coverage : 2017-11-23 / 2017-12-28  
created : 2023-08-21T08:24:51

## Temperature of sensors at the SWIR front-end electronics (last month)

