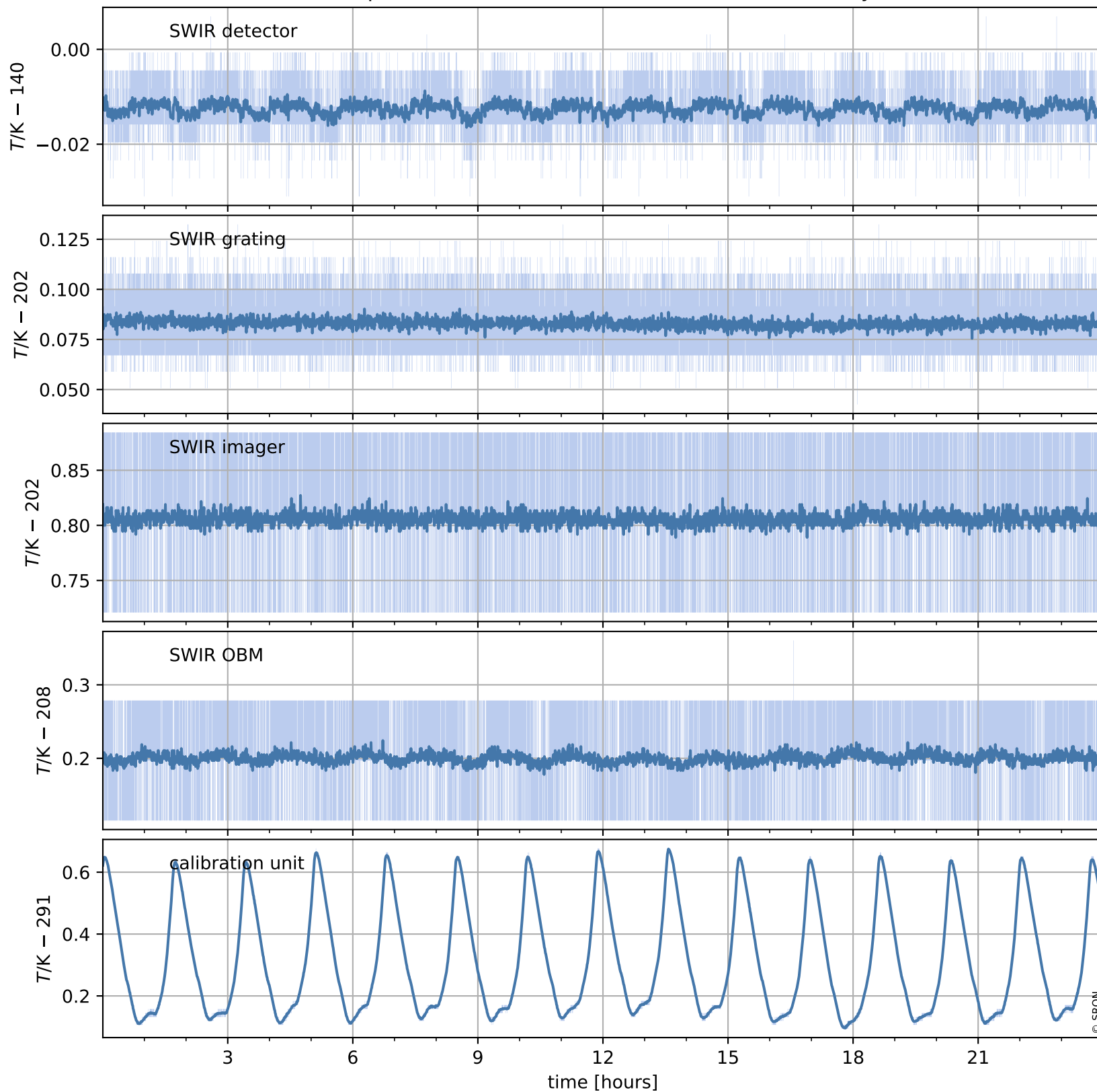


Tropomi SWIR housekeeping data

orbits : [1073, 1087]
coverage : 2017-12-28 / 2017-12-29
created : 2023-08-21T08:24:51

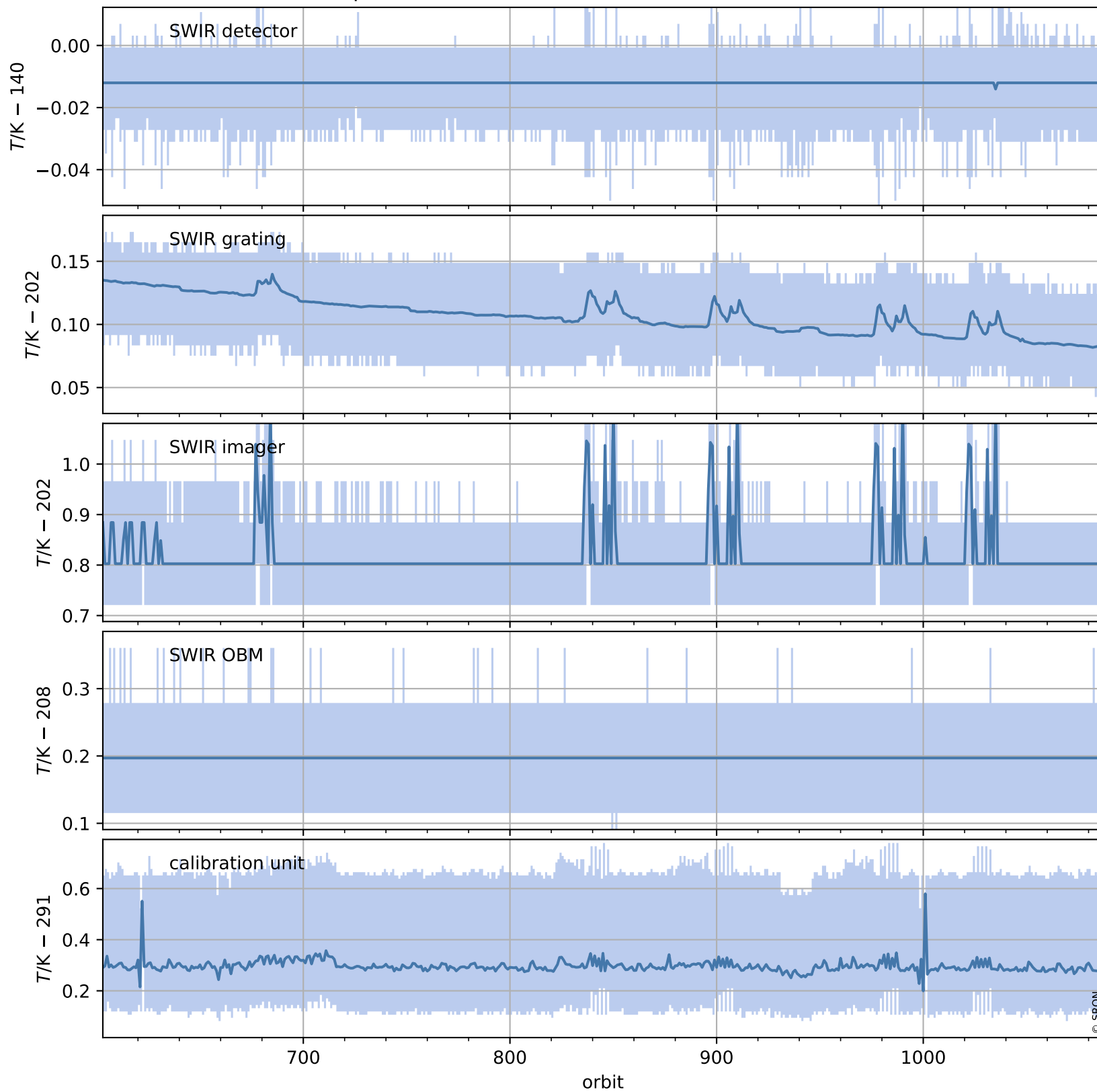
Temperature of sensors relevant for SWIR (one day)



Tropomi SWIR housekeeping data

orbits : [603, 1087]
coverage : 2017-11-24 / 2017-12-29
created : 2023-08-21T08:24:51

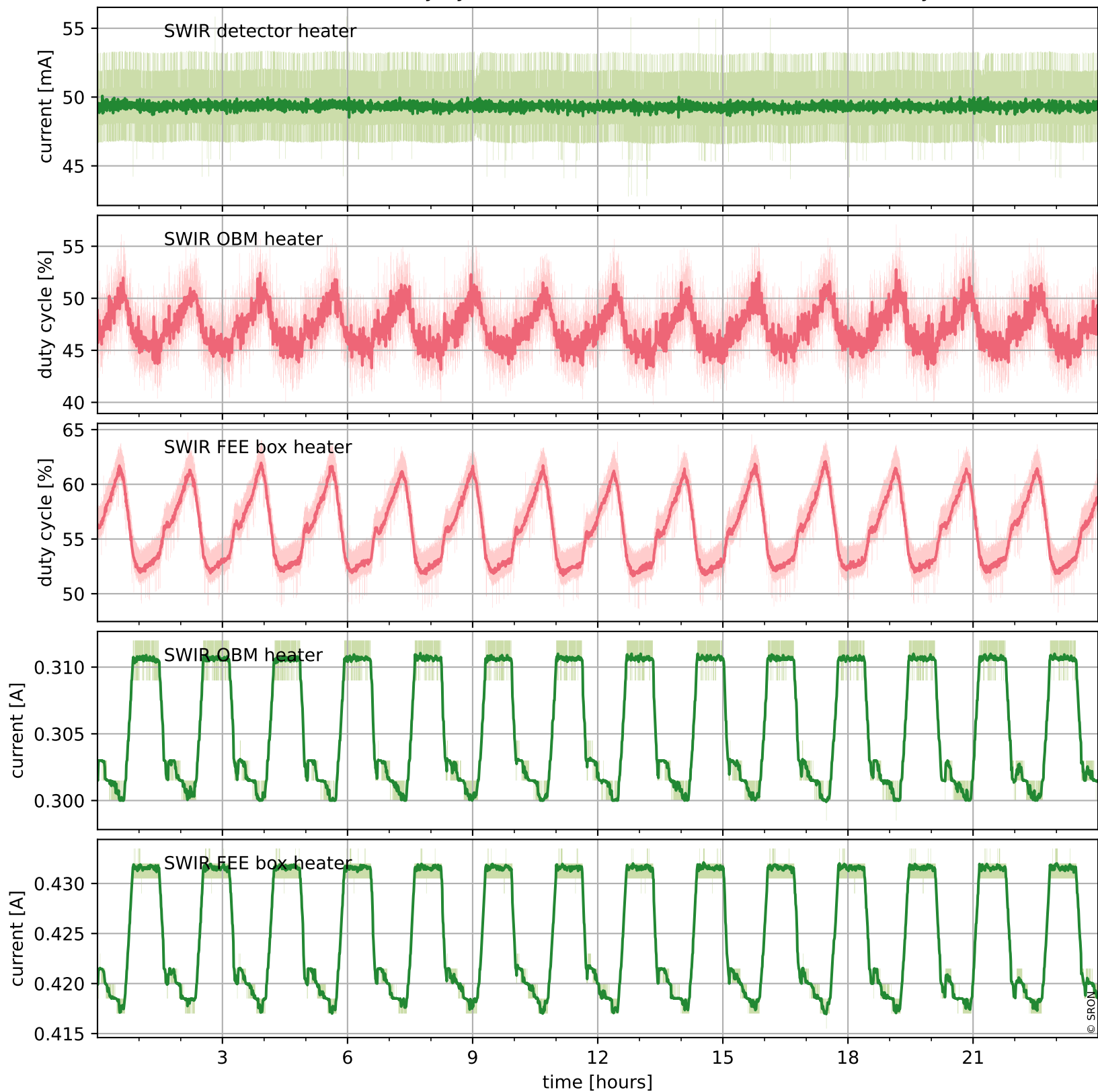
Temperature of sensors relevant for SWIR (last month)



Tropomi SWIR housekeeping data

orbits : [1073, 1087]
coverage : 2017-12-28 / 2017-12-29
created : 2023-08-21T08:24:52

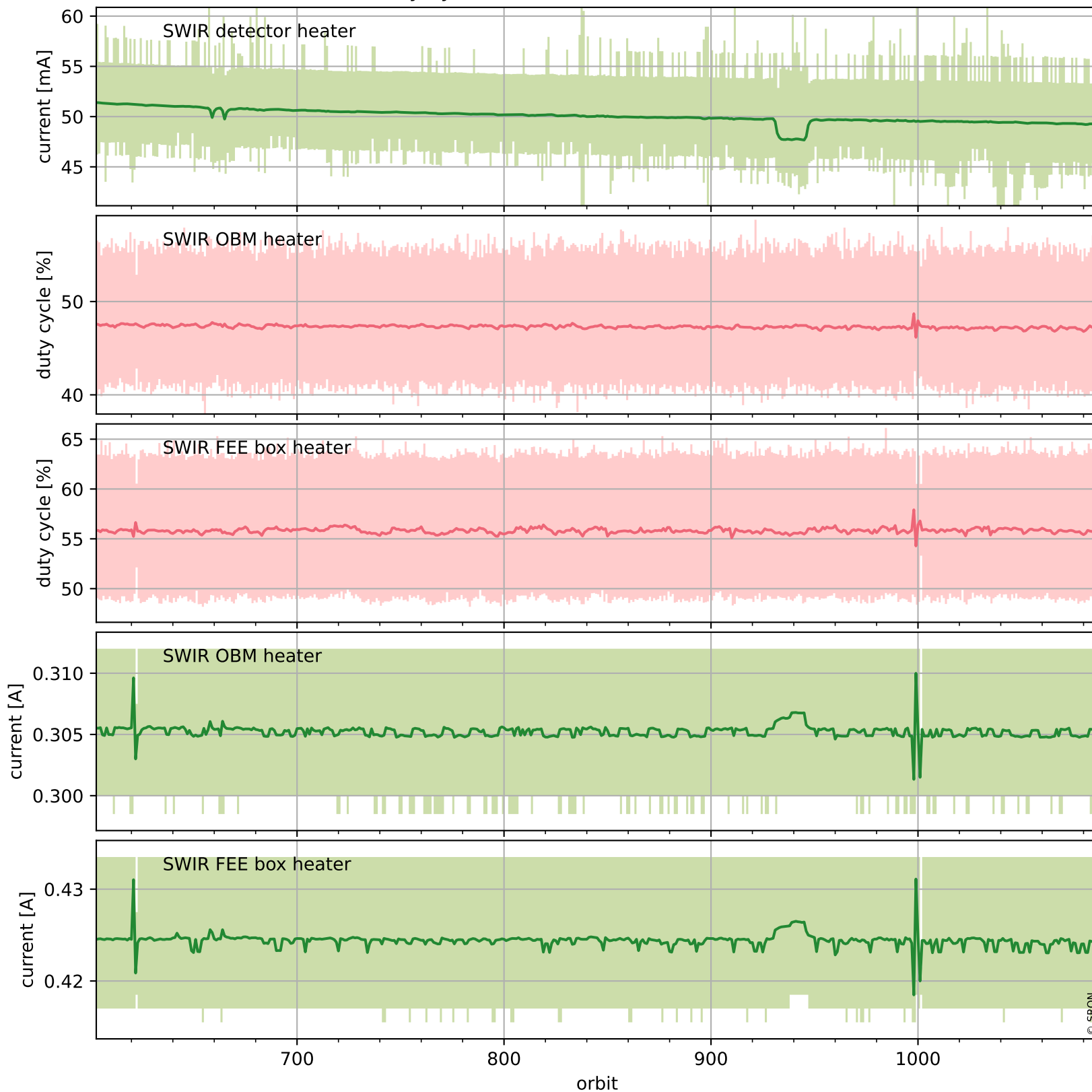
Current and duty cycle of 3 heaters relevant for SWIR (one day)



Tropomi SWIR housekeeping data

orbits : [603, 1087]
coverage : 2017-11-24 / 2017-12-29
created : 2023-08-21T08:24:52

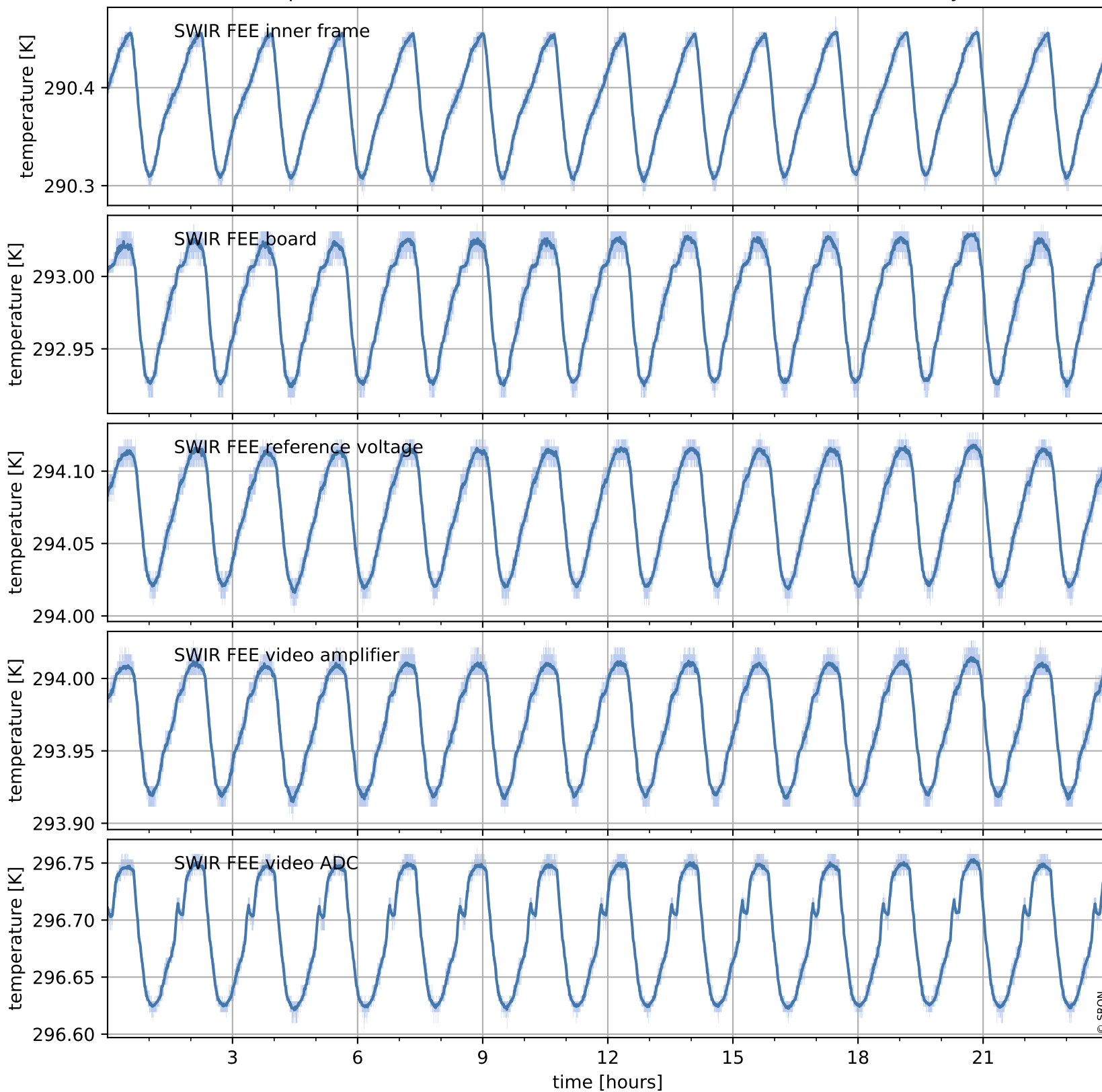
Current and duty cycle of 3 heaters relevant for SWIR (last month)



Tropomi SWIR housekeeping data

orbits : [1073, 1087]
coverage : 2017-12-28 / 2017-12-29
created : 2023-08-21T08:24:53

Temperature of sensors at the SWIR front-end electronics (one day)



Tropomi SWIR housekeeping data

orbits : [603, 1087]
coverage : 2017-11-24 / 2017-12-29
created : 2023-08-21T08:24:53

Temperature of sensors at the SWIR front-end electronics (last month)

