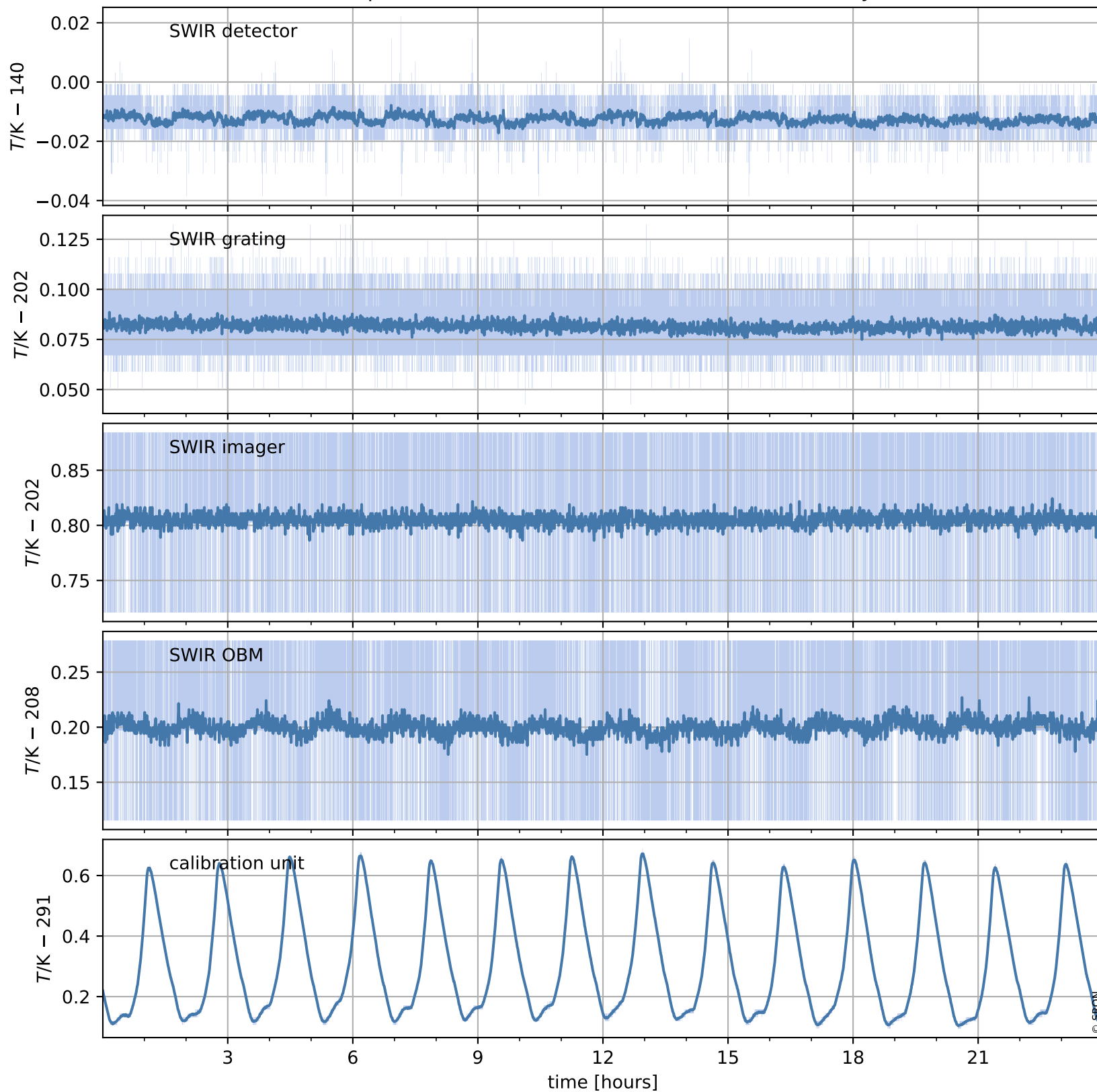


# Tropomi SWIR housekeeping data

orbits : [1102, 1115]  
coverage : 2017-12-30 / 2017-12-31  
created : 2023-08-21T08:24:56

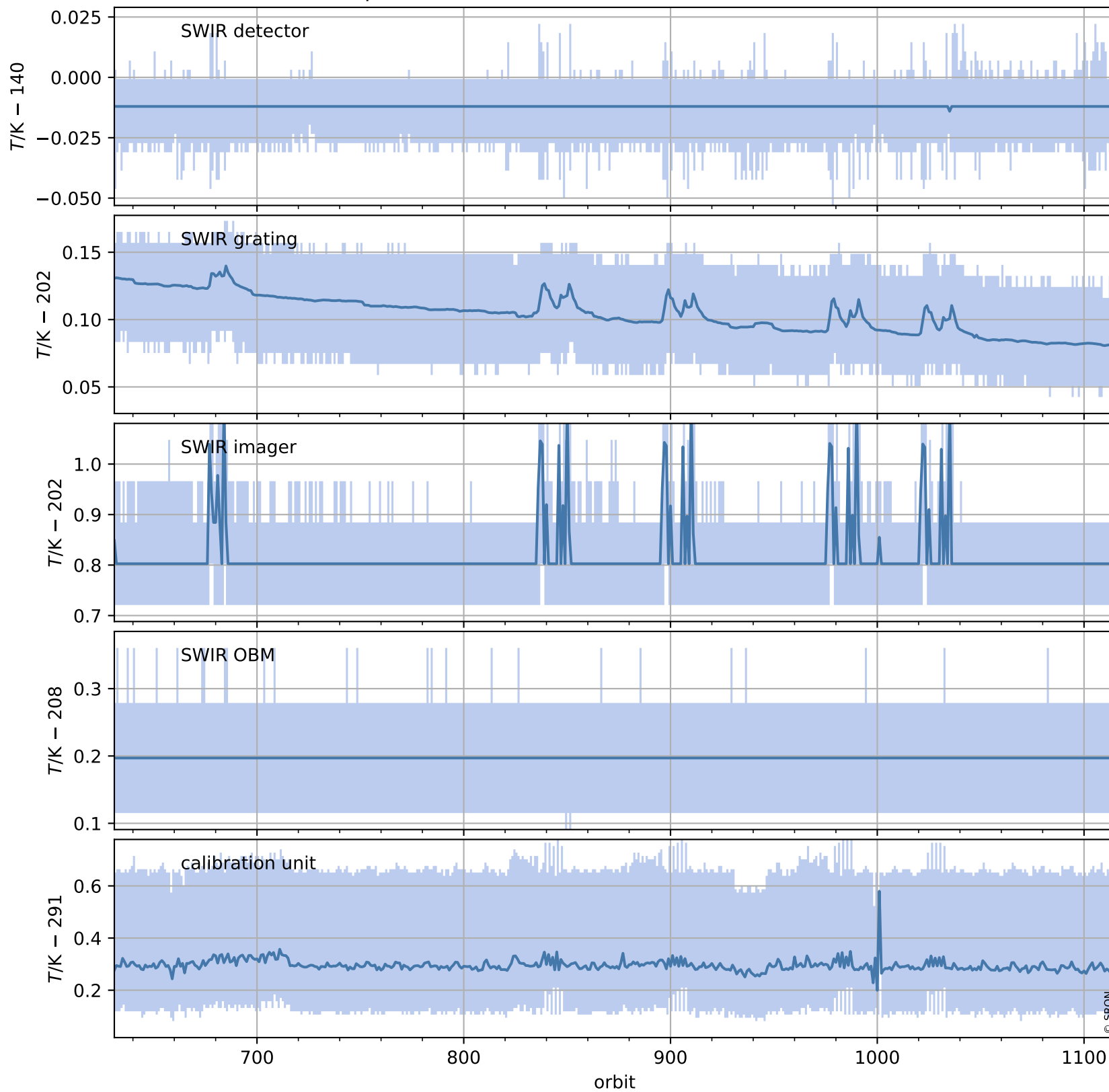
## Temperature of sensors relevant for SWIR (one day)



# Tropomi SWIR housekeeping data

orbits : [631, 1115]  
coverage : 2017-11-26 / 2017-12-31  
created : 2023-08-21T08:24:56

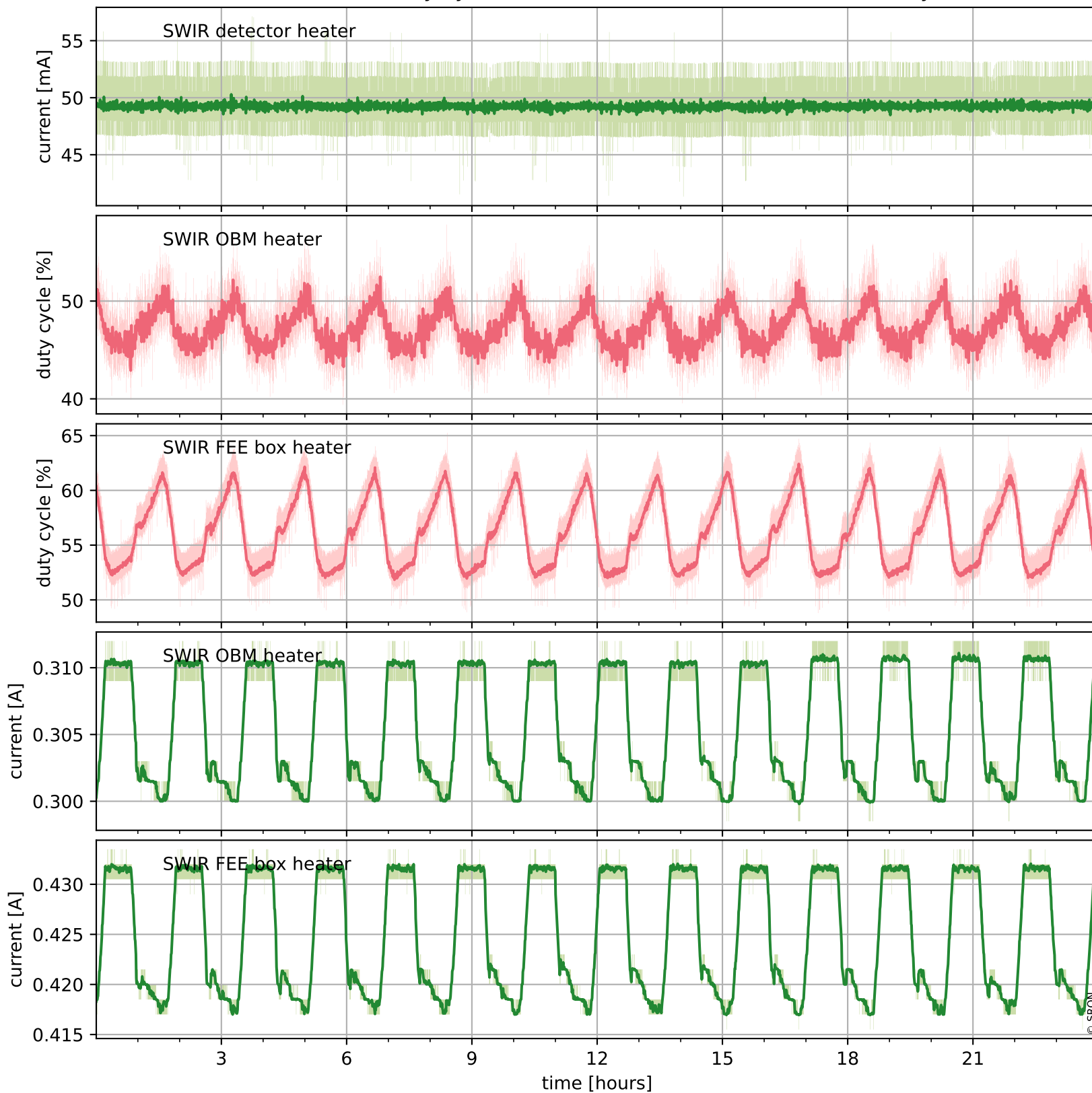
## Temperature of sensors relevant for SWIR (last month)



# Tropomi SWIR housekeeping data

orbits : [1102, 1115]  
coverage : 2017-12-30 / 2017-12-31  
created : 2023-08-21T08:24:57

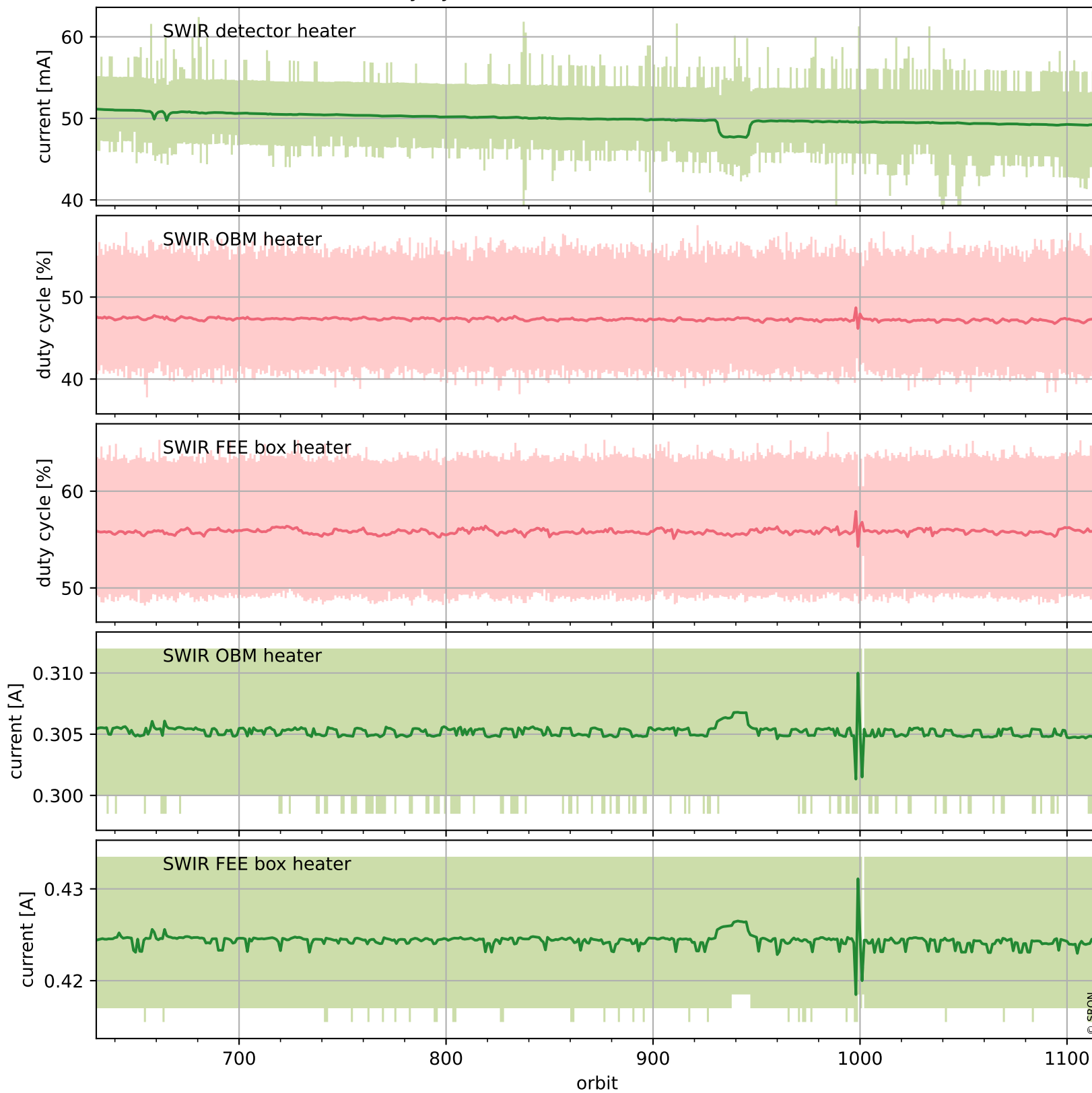
## Current and duty cycle of 3 heaters relevant for SWIR (one day)



# Tropomi SWIR housekeeping data

orbits : [631, 1115]  
coverage : 2017-11-26 / 2017-12-31  
created : 2023-08-21T08:24:57

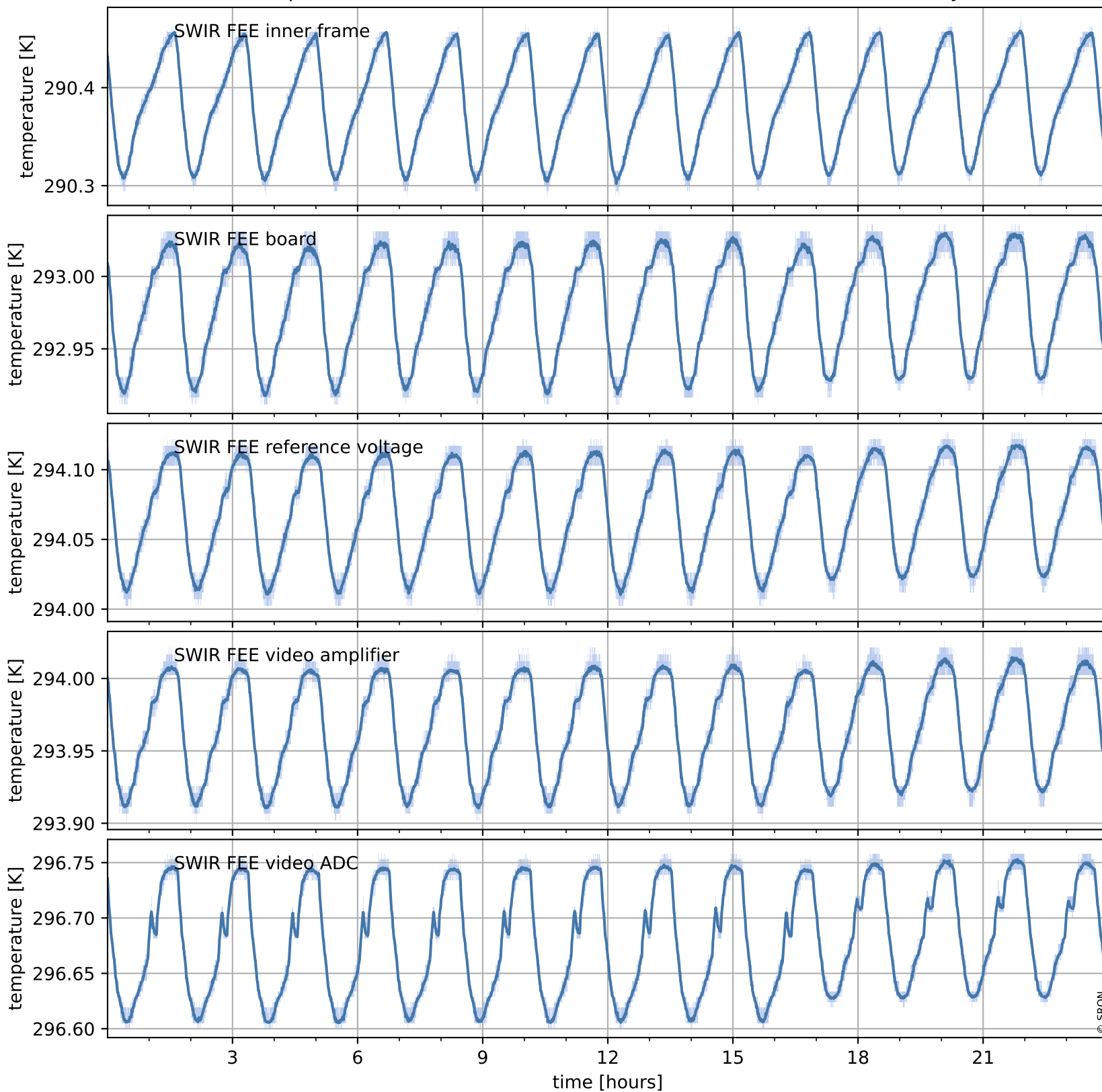
## Current and duty cycle of 3 heaters relevant for SWIR (last month)



# Tropomi SWIR housekeeping data

orbits : [1102, 1115]  
coverage : 2017-12-30 / 2017-12-31  
created : 2023-08-21T08:24:58

## Temperature of sensors at the SWIR front-end electronics (one day)



# Tropomi SWIR housekeeping data

orbits : [631, 1115]  
coverage : 2017-11-26 / 2017-12-31  
created : 2023-08-21T08:24:58

## Temperature of sensors at the SWIR front-end electronics (last month)

