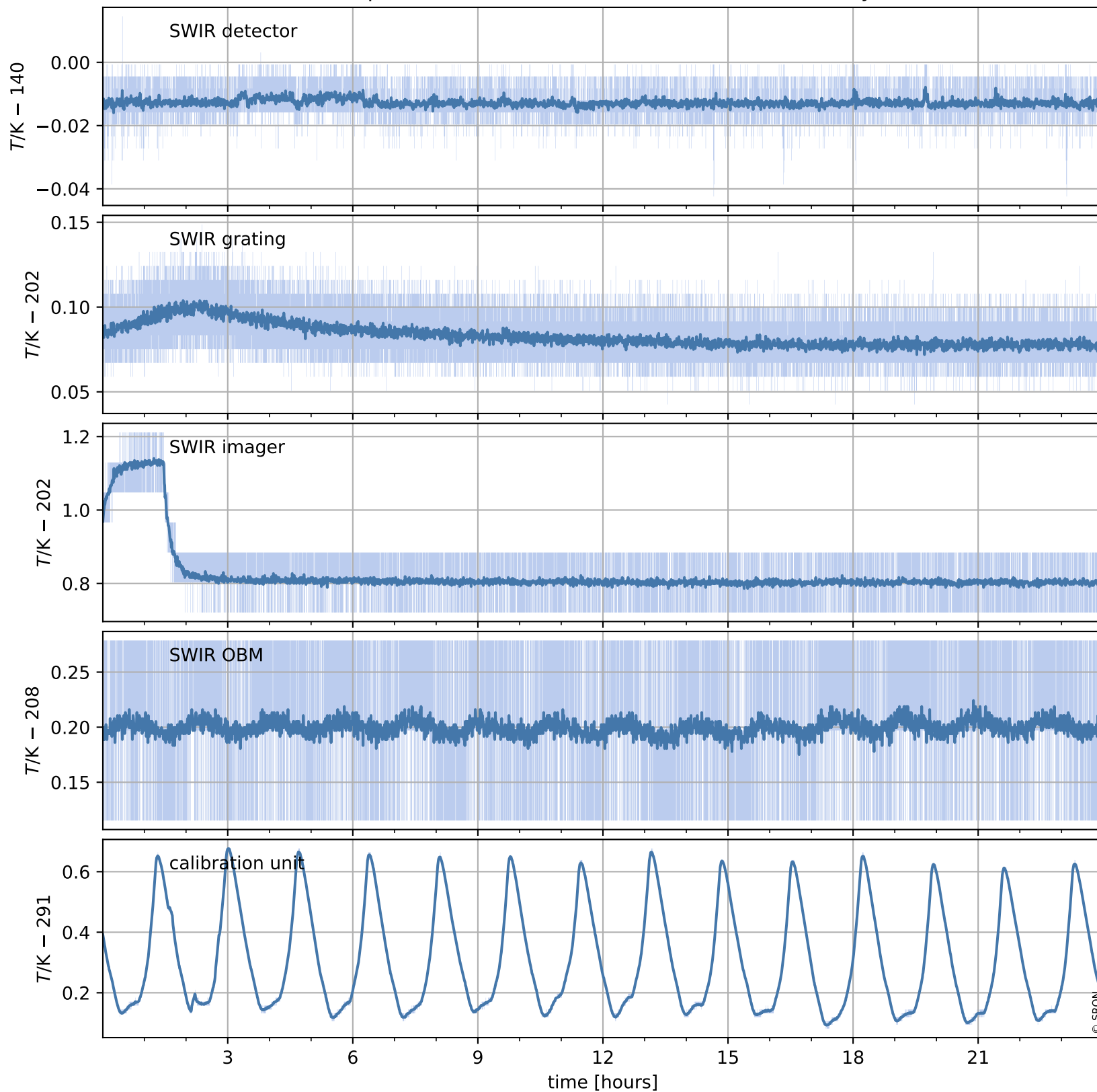


Tropomi SWIR housekeeping data

orbits : [1244, 1257]
coverage : 2018-01-09 / 2018-01-10
created : 2023-08-21T08:25:19

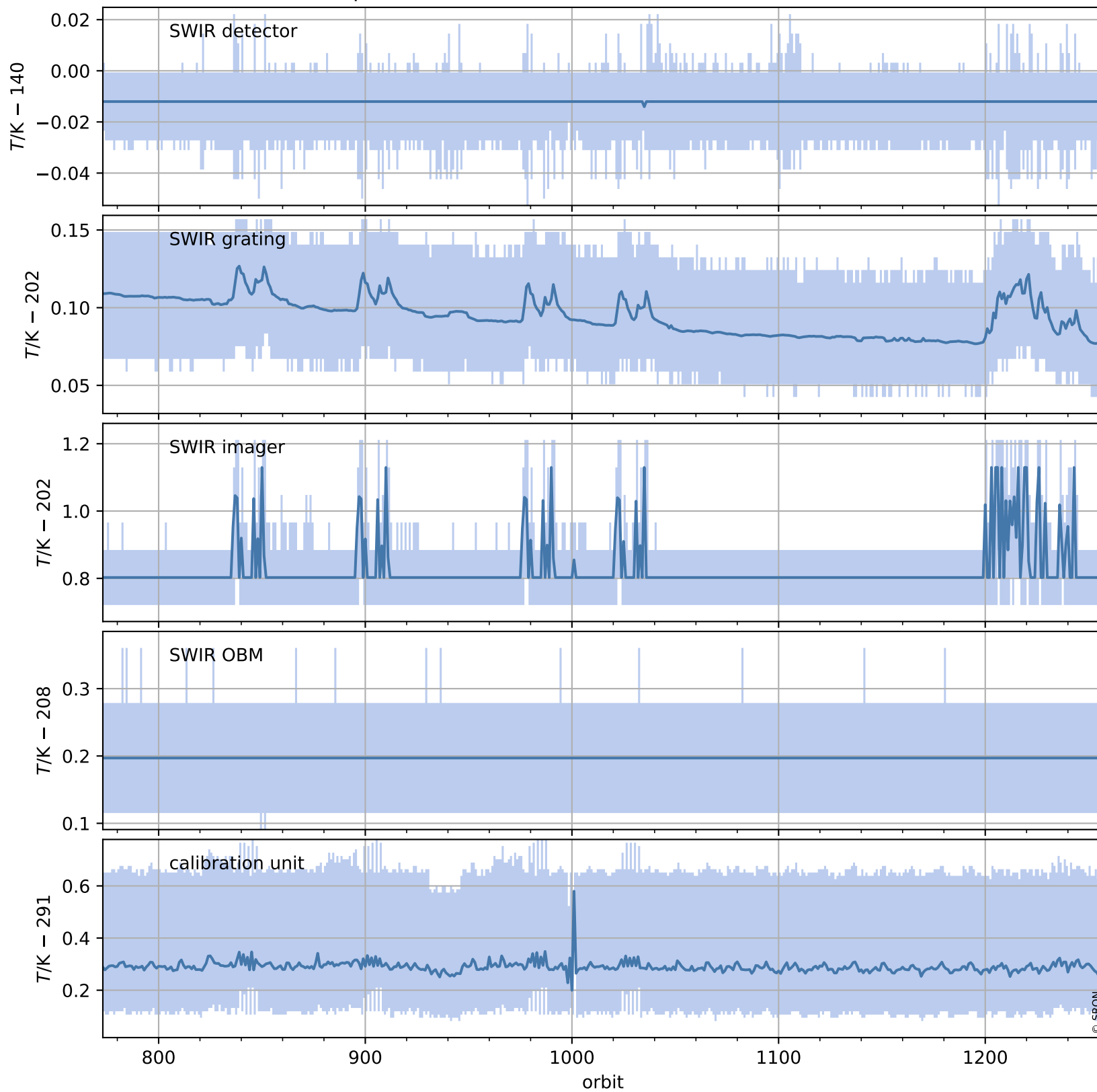
Temperature of sensors relevant for SWIR (one day)



Tropomi SWIR housekeeping data

orbits : [773, 1257]
coverage : 2017-12-06 / 2018-01-10
created : 2023-08-21T08:25:20

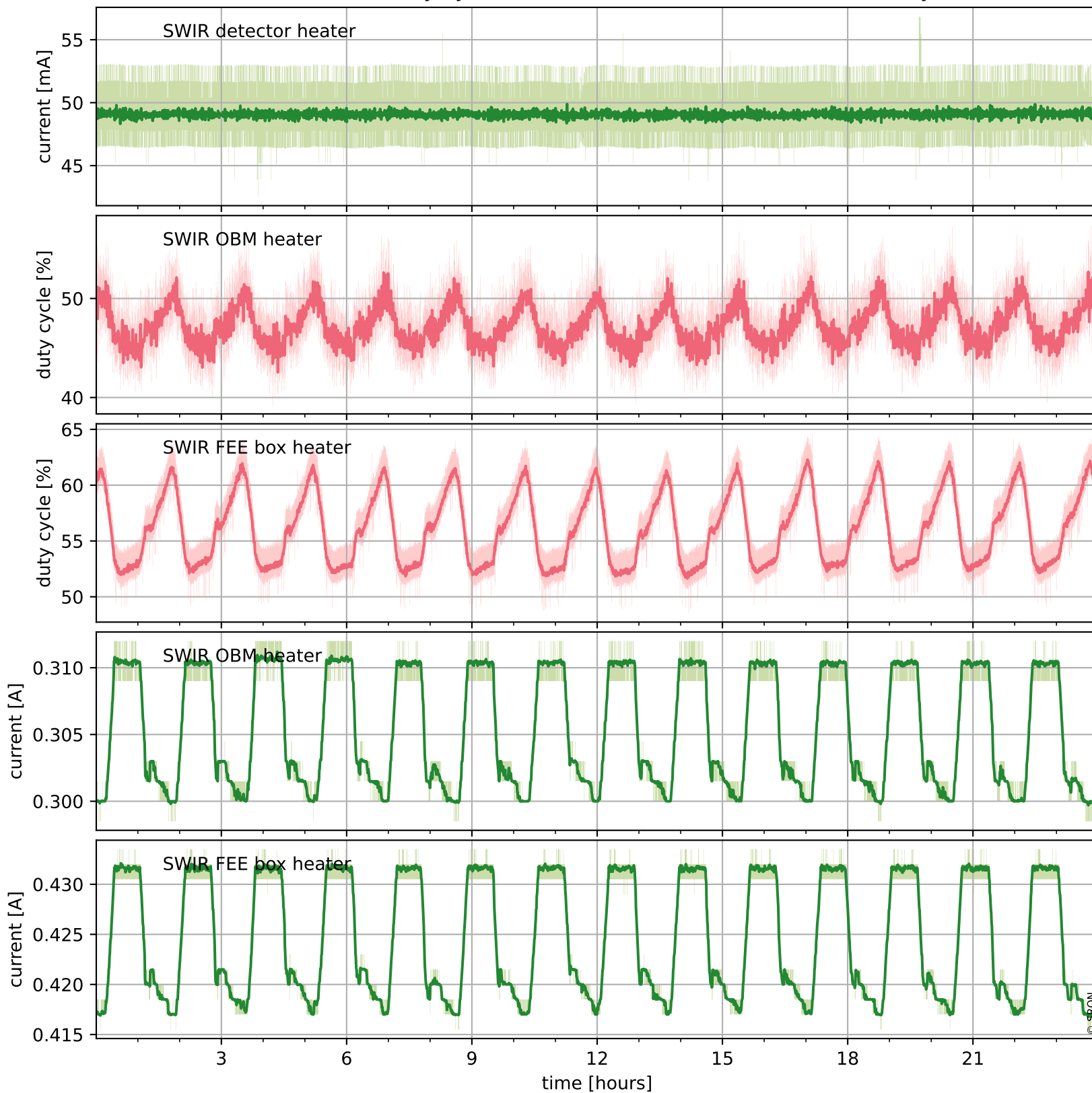
Temperature of sensors relevant for SWIR (last month)



Tropomi SWIR housekeeping data

orbits : [1244, 1257]
coverage : 2018-01-09 / 2018-01-10
created : 2023-08-21T08:25:20

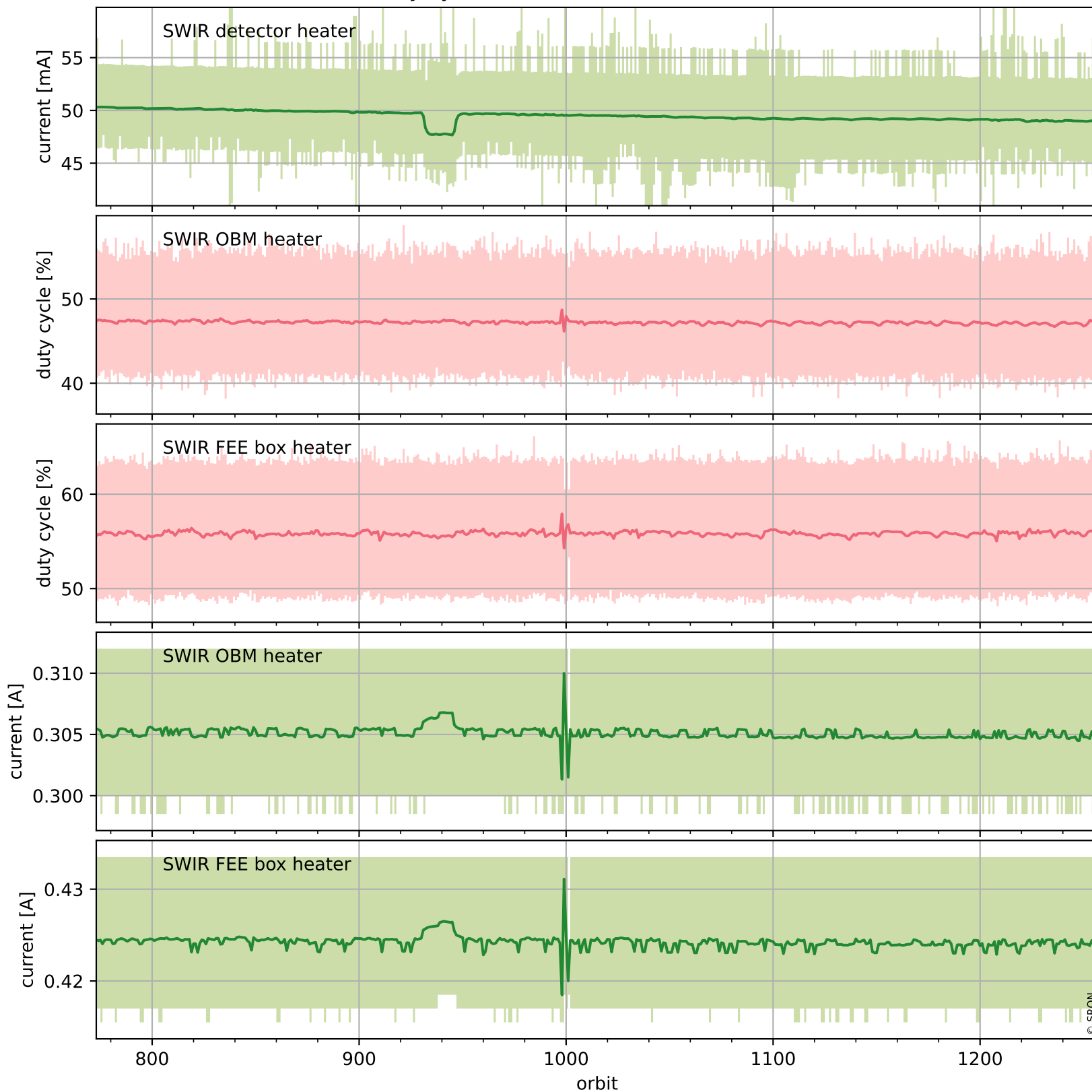
Current and duty cycle of 3 heaters relevant for SWIR (one day)



Tropomi SWIR housekeeping data

orbits : [773, 1257]
coverage : 2017-12-06 / 2018-01-10
created : 2023-08-21T08:25:20

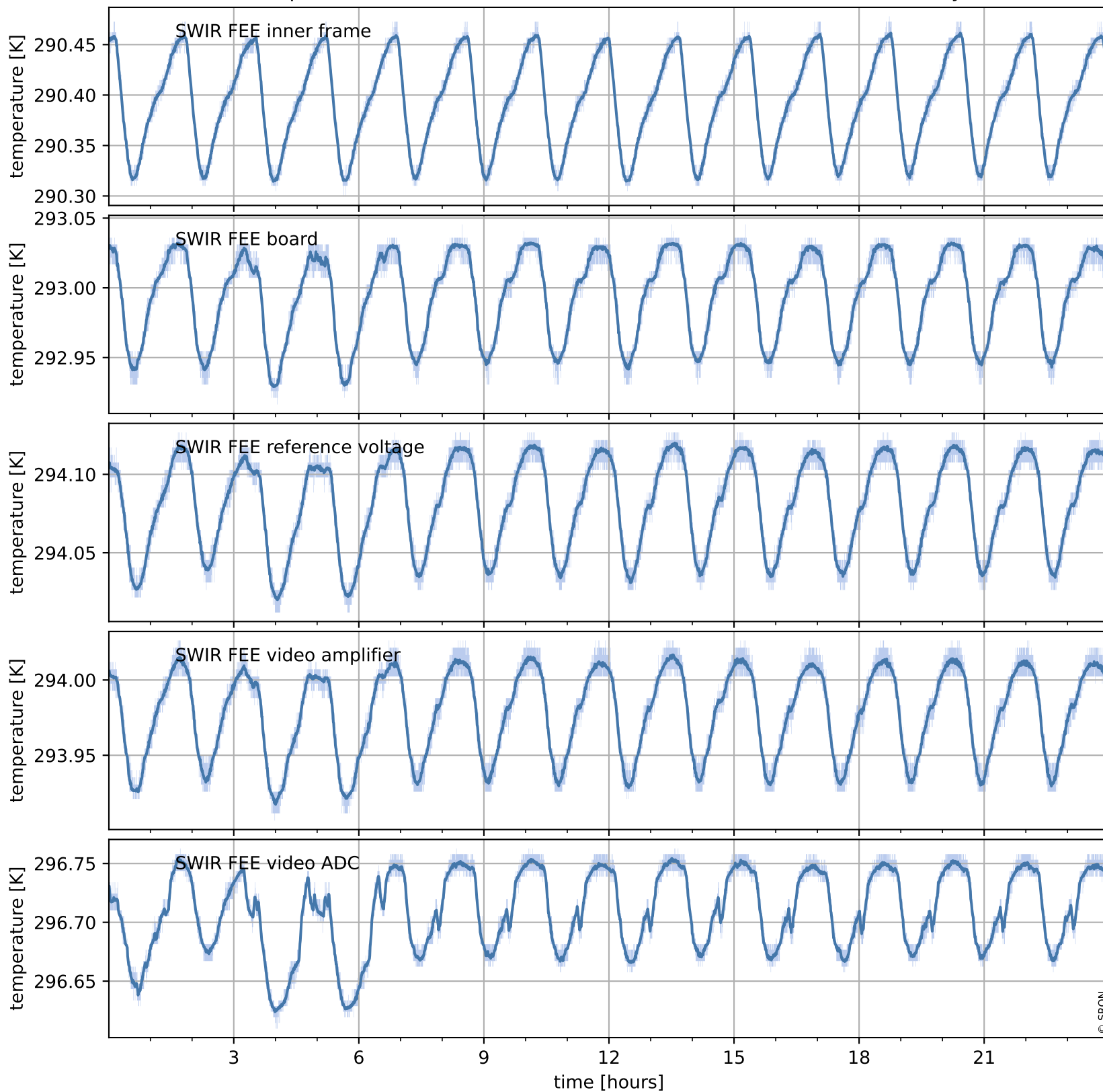
Current and duty cycle of 3 heaters relevant for SWIR (last month)



Tropomi SWIR housekeeping data

orbits : [1244, 1257]
coverage : 2018-01-09 / 2018-01-10
created : 2023-08-21T08:25:21

Temperature of sensors at the SWIR front-end electronics (one day)



Tropomi SWIR housekeeping data

orbits : [773, 1257]
coverage : 2017-12-06 / 2018-01-10
created : 2023-08-21T08:25:21

Temperature of sensors at the SWIR front-end electronics (last month)

