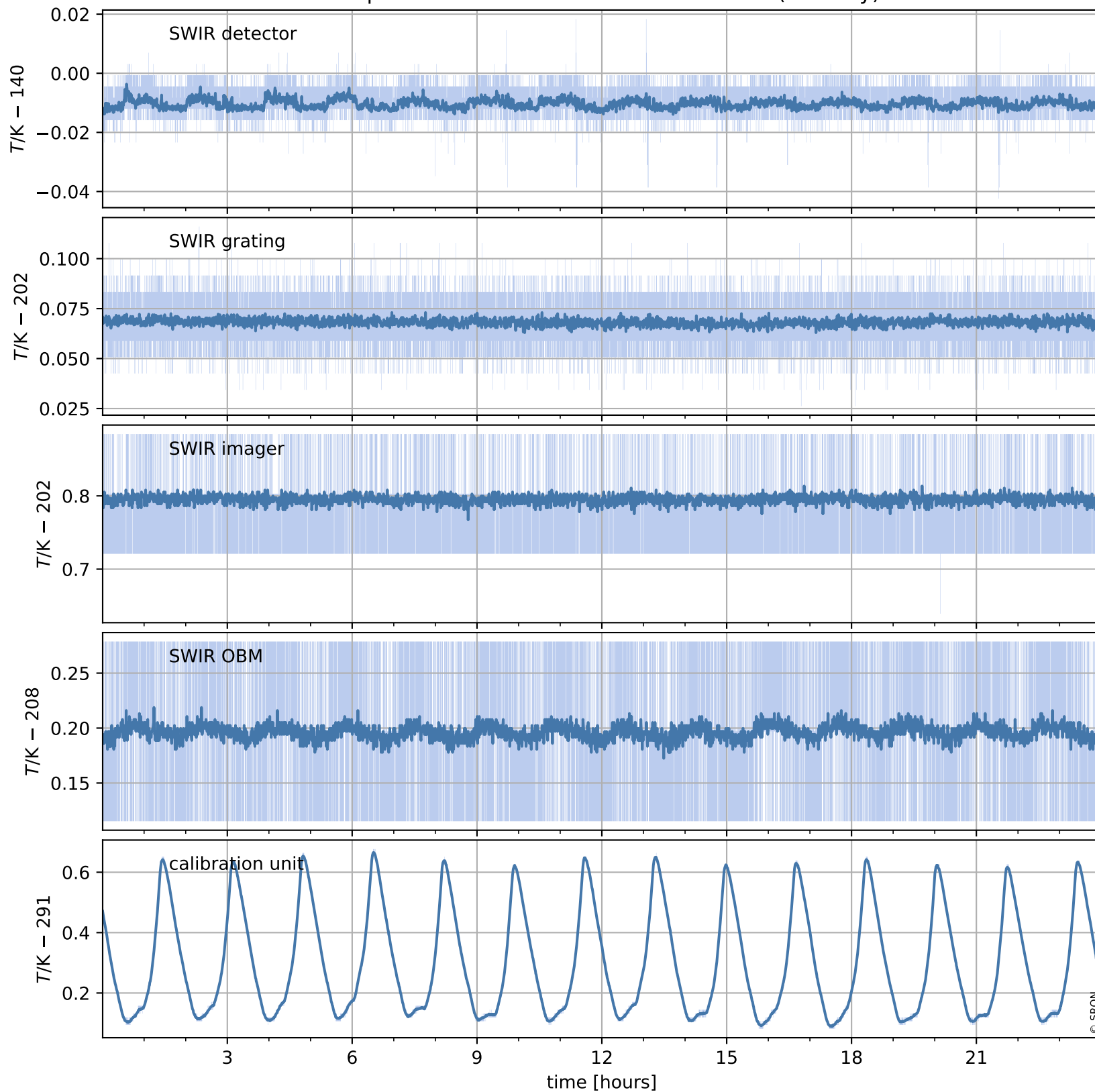


Tropomi SWIR housekeeping data

orbits : [1542, 1555]
coverage : 2018-01-30 / 2018-01-31
created : 2023-08-21T08:26:09

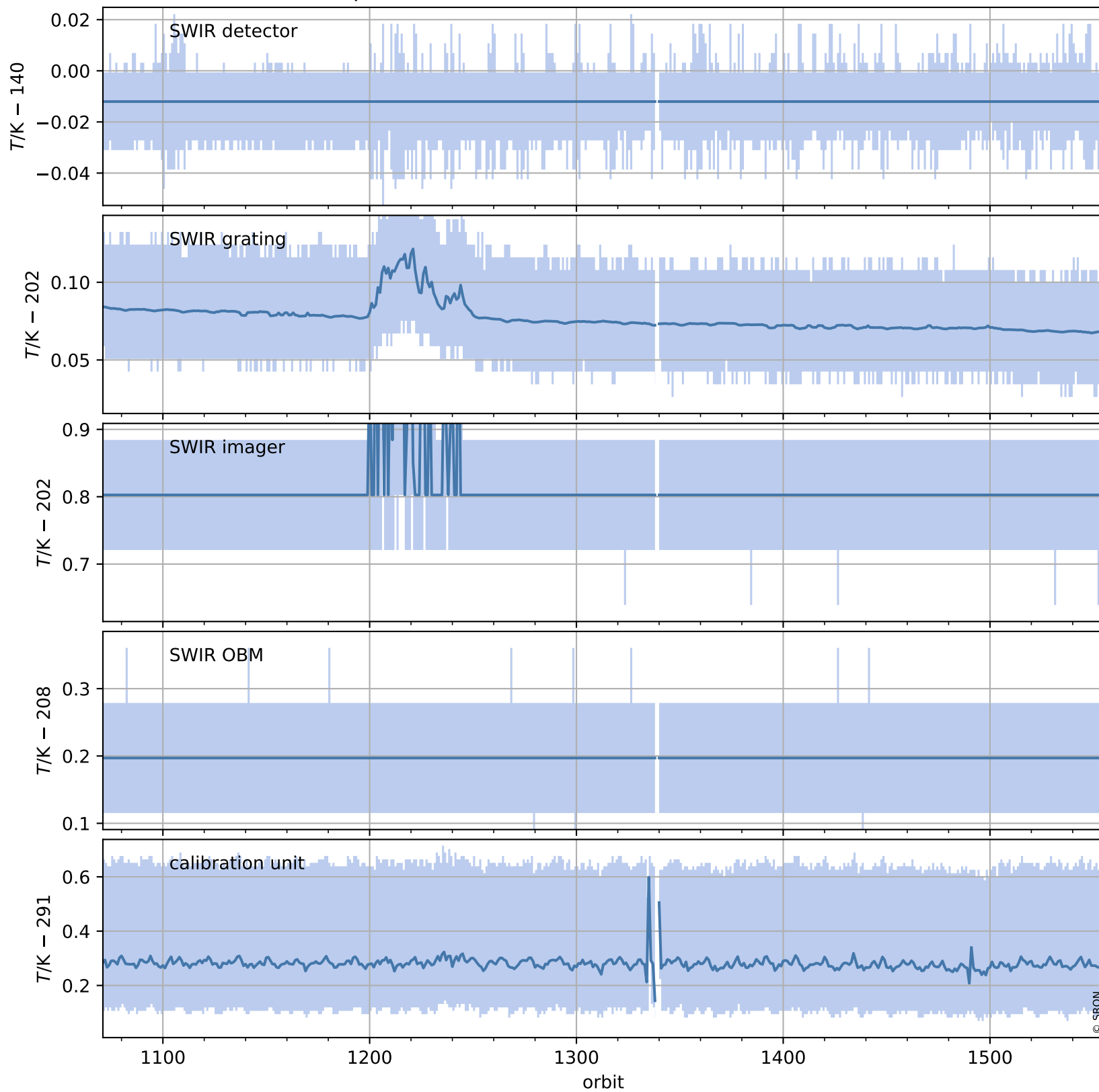
Temperature of sensors relevant for SWIR (one day)



Tropomi SWIR housekeeping data

orbits : [1071, 1555]
coverage : 2017-12-27 / 2018-01-31
created : 2023-08-21T08:26:09

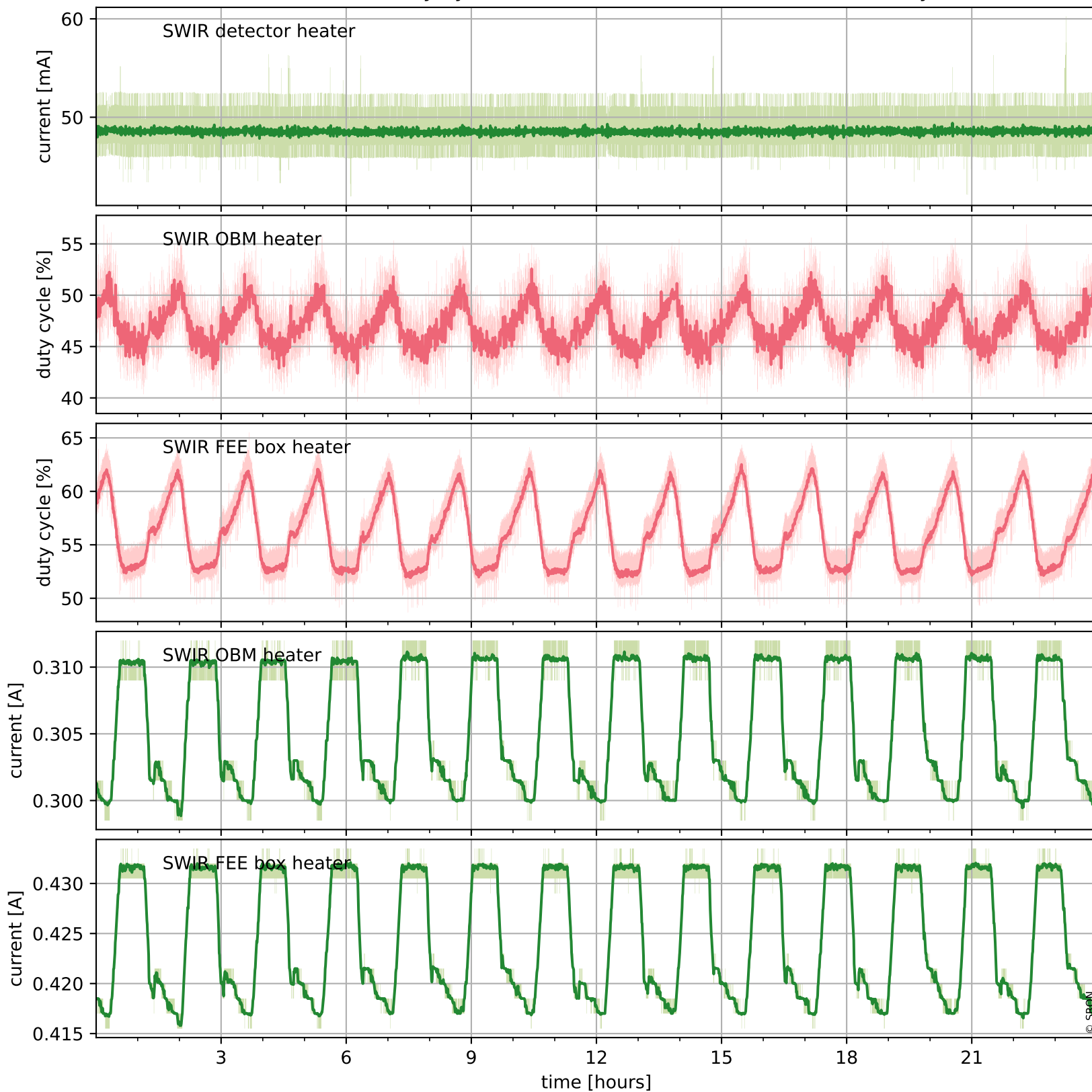
Temperature of sensors relevant for SWIR (last month)



Tropomi SWIR housekeeping data

orbits : [1542, 1555]
coverage : 2018-01-30 / 2018-01-31
created : 2023-08-21T08:26:09

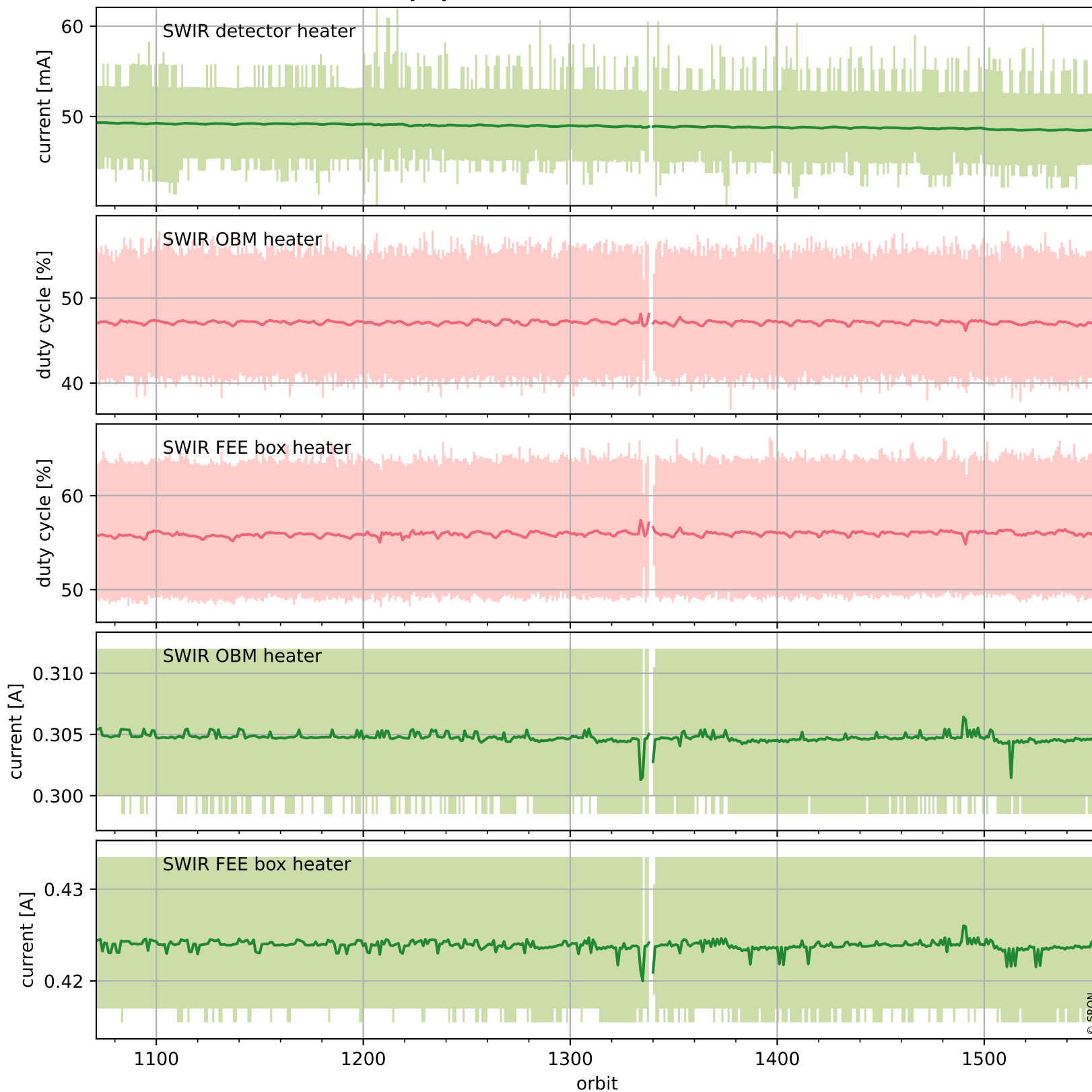
Current and duty cycle of 3 heaters relevant for SWIR (one day)



Tropomi SWIR housekeeping data

orbits : [1071, 1555]
coverage : 2017-12-27 / 2018-01-31
created : 2023-08-21T08:26:10

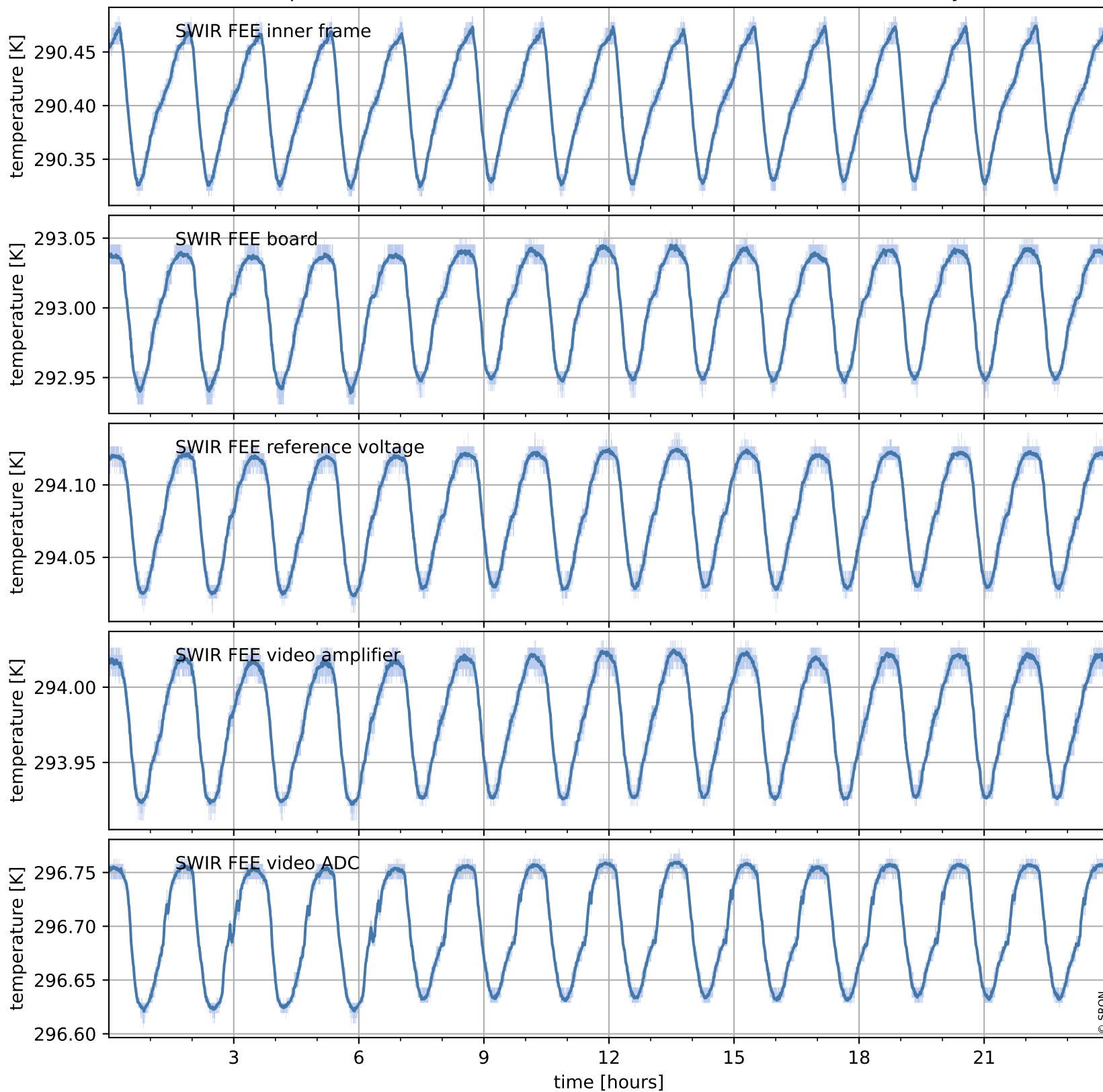
Current and duty cycle of 3 heaters relevant for SWIR (last month)



Tropomi SWIR housekeeping data

orbits : [1542, 1555]
coverage : 2018-01-30 / 2018-01-31
created : 2023-08-21T08:26:10

Temperature of sensors at the SWIR front-end electronics (one day)



Tropomi SWIR housekeeping data

orbits : [1071, 1555]
coverage : 2017-12-27 / 2018-01-31
created : 2023-08-21T08:26:10

Temperature of sensors at the SWIR front-end electronics (last month)

