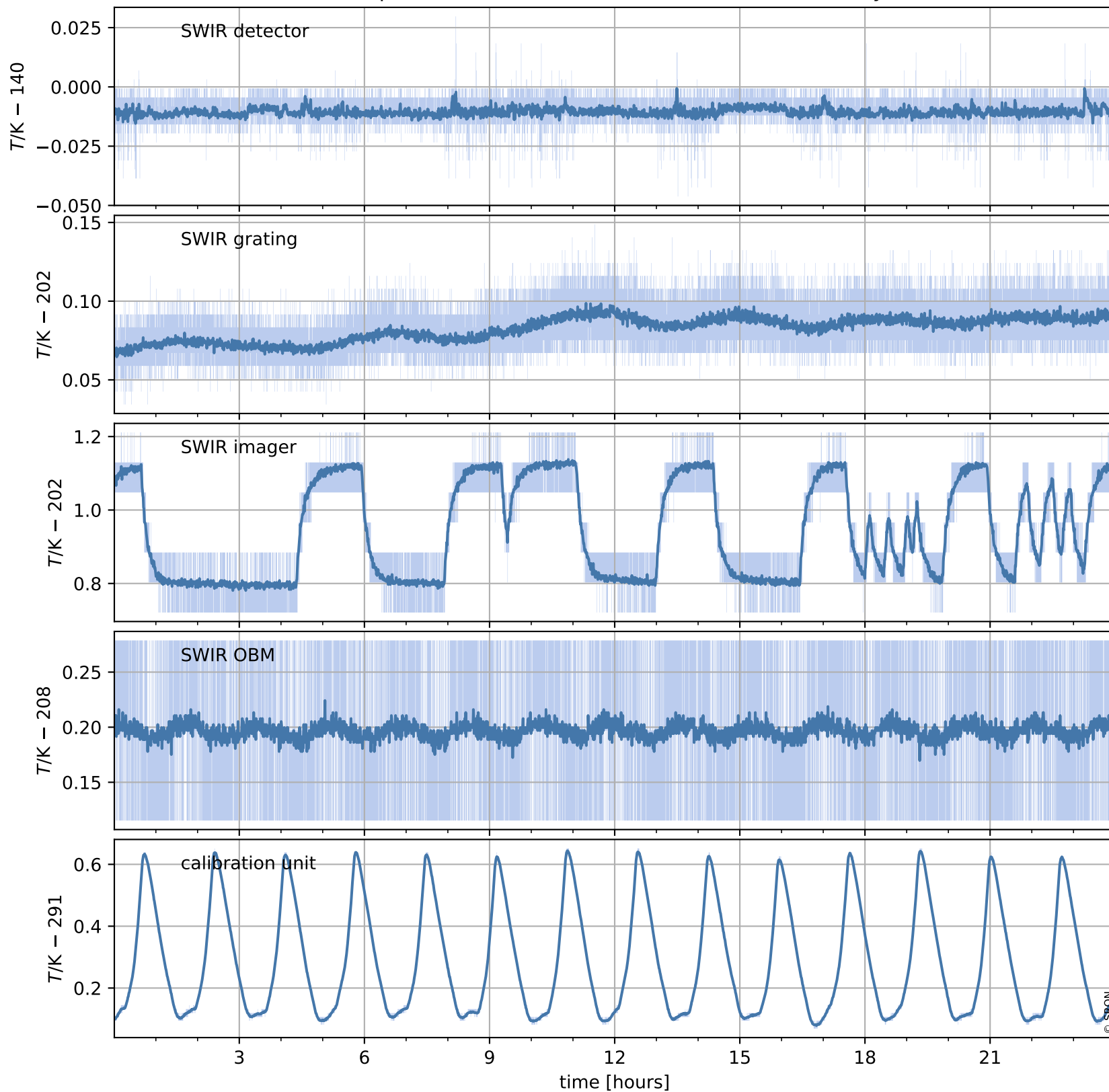


Tropomi SWIR housekeeping data

orbits : [1726, 1739]
coverage : 2018-02-12 / 2018-02-13
created : 2023-08-21T08:26:39

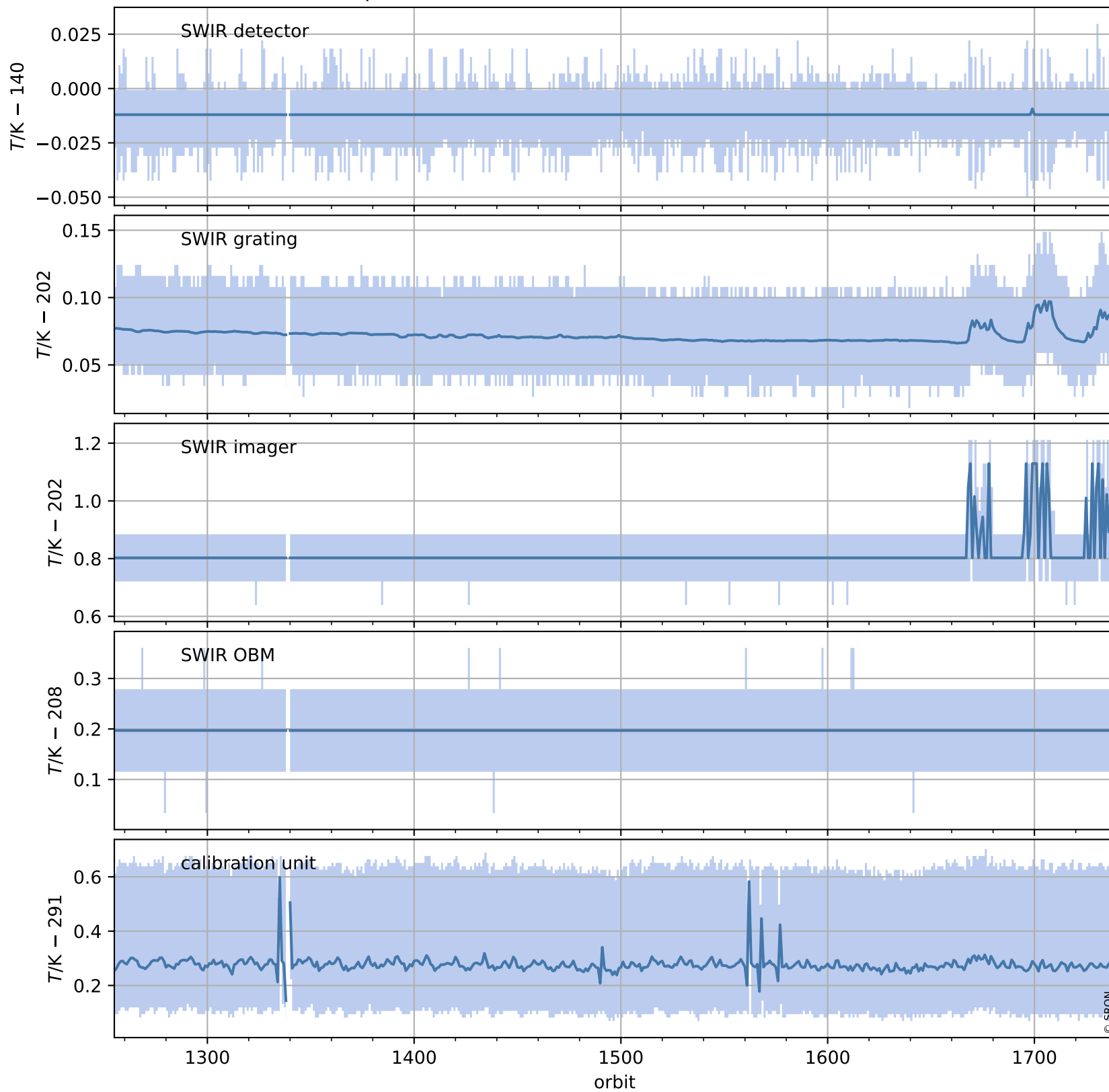
Temperature of sensors relevant for SWIR (one day)



Tropomi SWIR housekeeping data

orbits : [1255, 1739]
coverage : 2018-01-09 / 2018-02-13
created : 2023-08-21T08:26:39

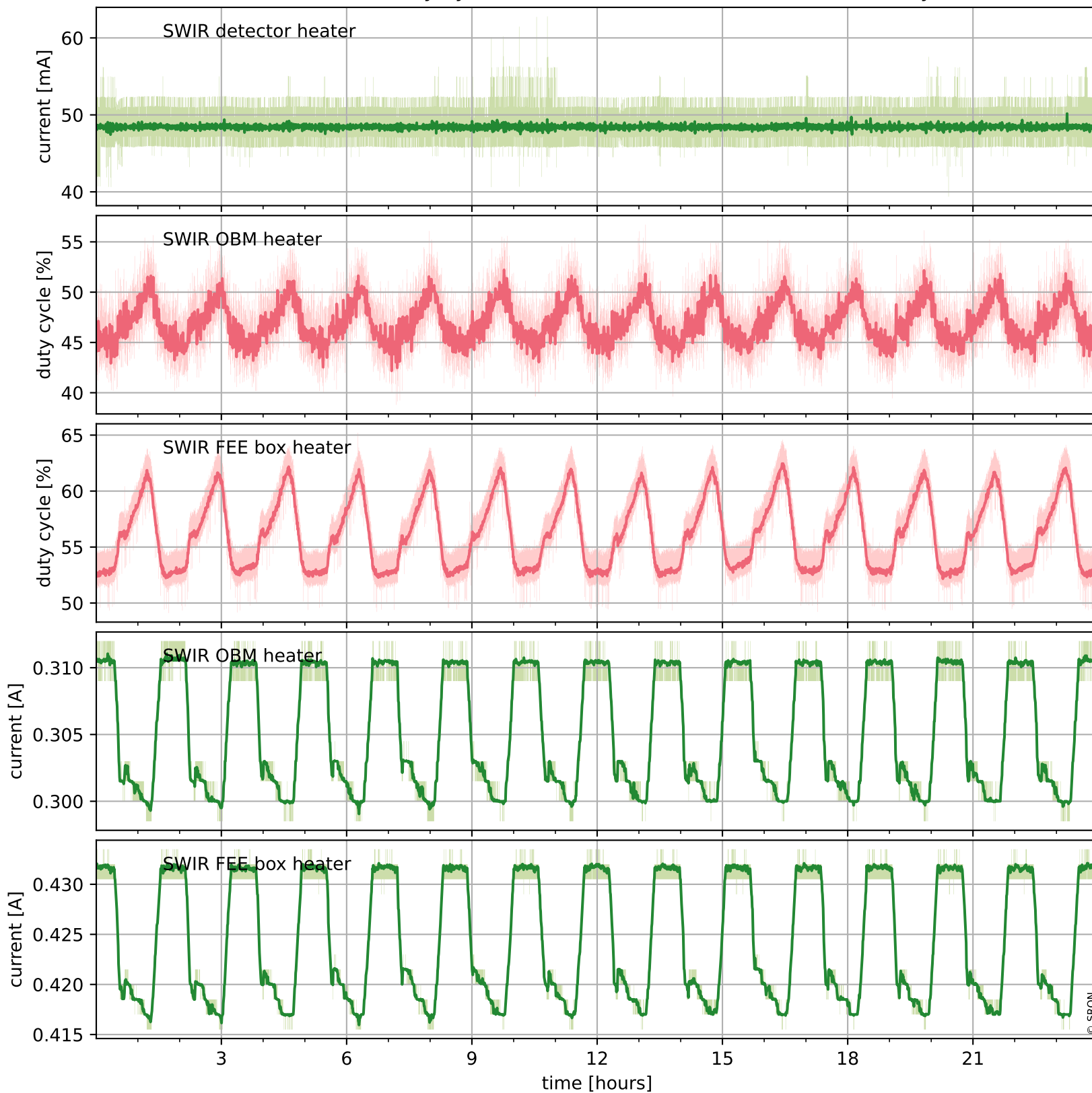
Temperature of sensors relevant for SWIR (last month)



Tropomi SWIR housekeeping data

orbits : [1726, 1739]
coverage : 2018-02-12 / 2018-02-13
created : 2023-08-21T08:26:40

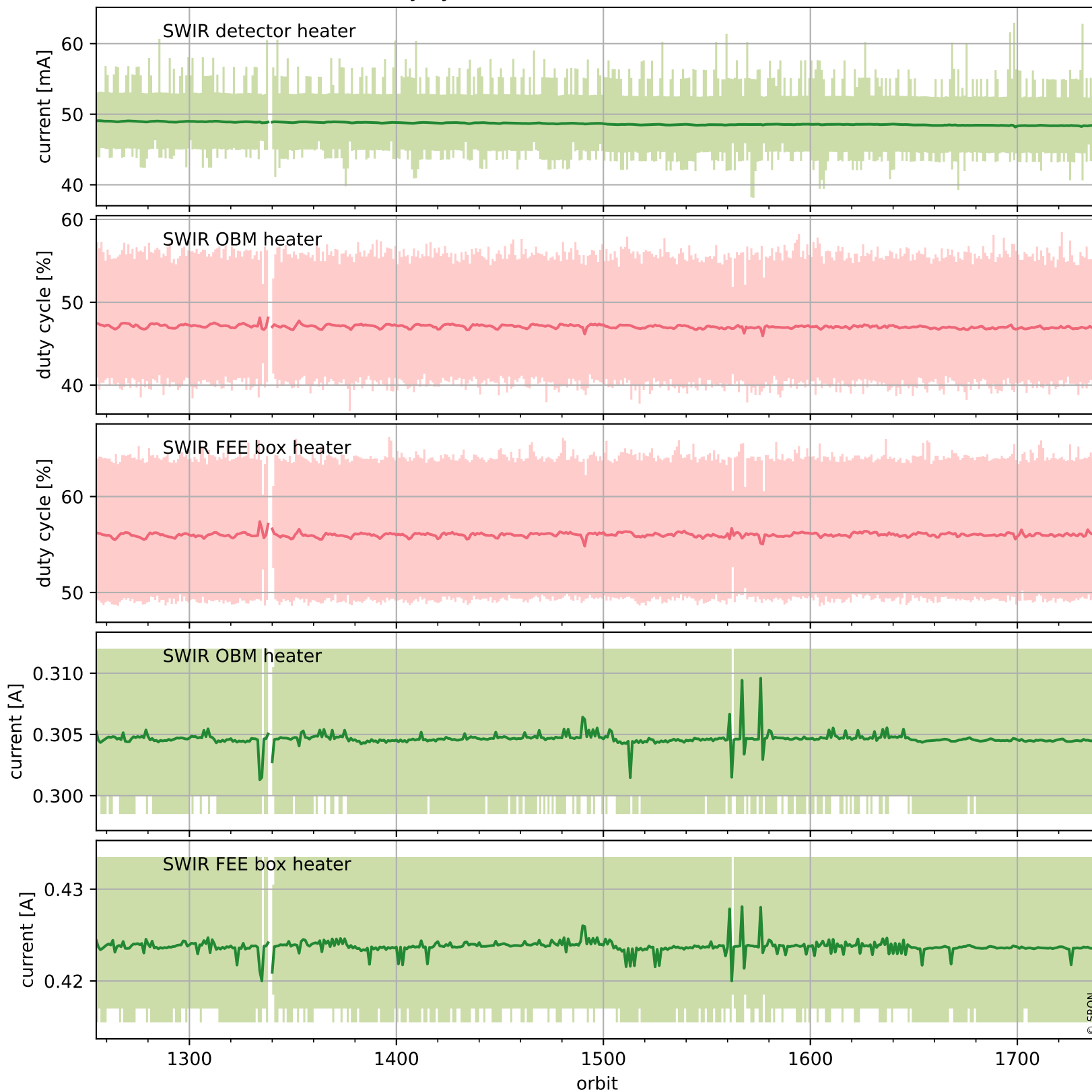
Current and duty cycle of 3 heaters relevant for SWIR (one day)



Tropomi SWIR housekeeping data

orbits : [1255, 1739]
coverage : 2018-01-09 / 2018-02-13
created : 2023-08-21T08:26:40

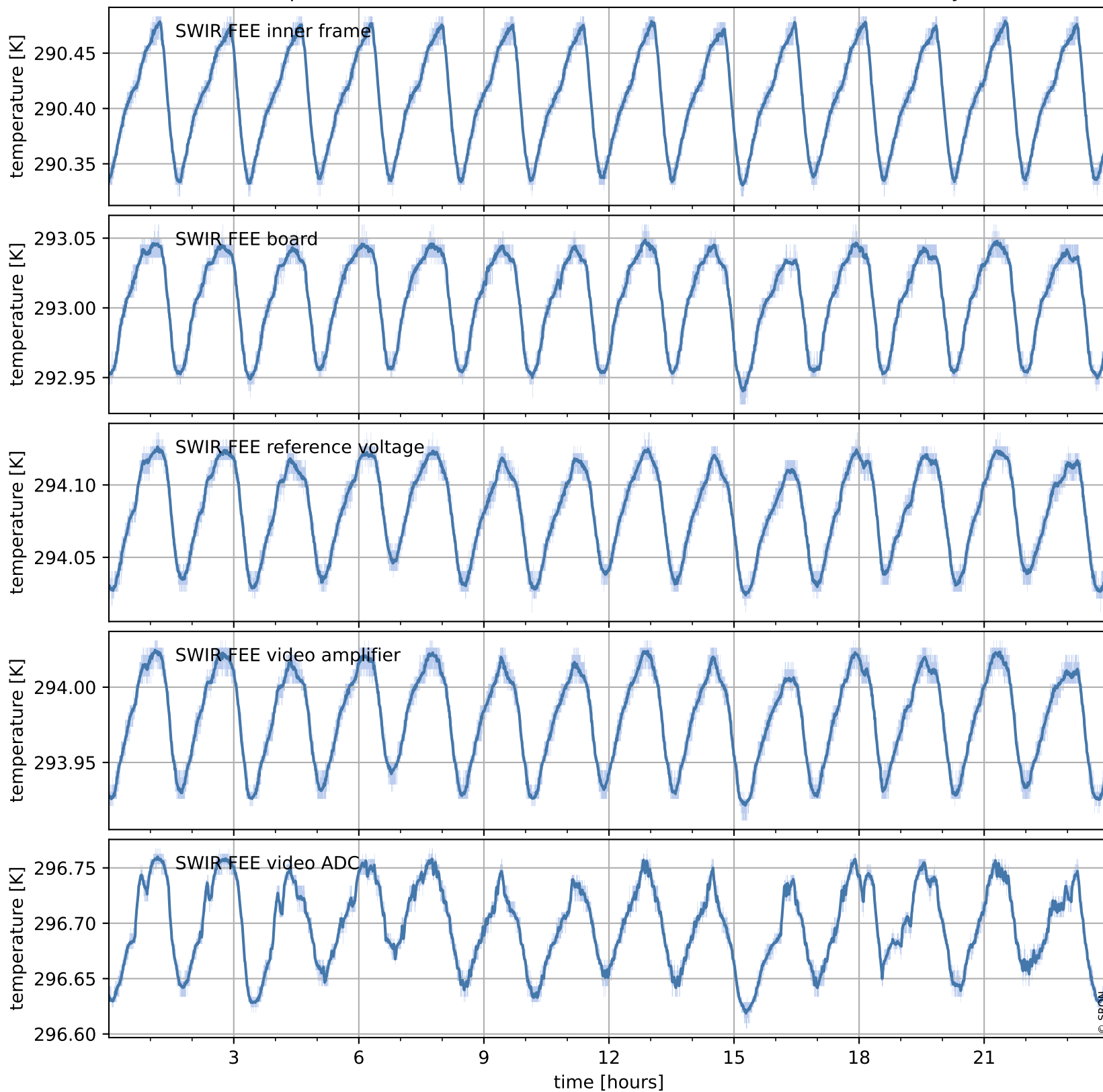
Current and duty cycle of 3 heaters relevant for SWIR (last month)



Tropomi SWIR housekeeping data

orbits : [1726, 1739]
coverage : 2018-02-12 / 2018-02-13
created : 2023-08-21T08:26:41

Temperature of sensors at the SWIR front-end electronics (one day)



Tropomi SWIR housekeeping data

orbits : [1255, 1739]
coverage : 2018-01-09 / 2018-02-13
created : 2023-08-21T08:26:41

Temperature of sensors at the SWIR front-end electronics (last month)

