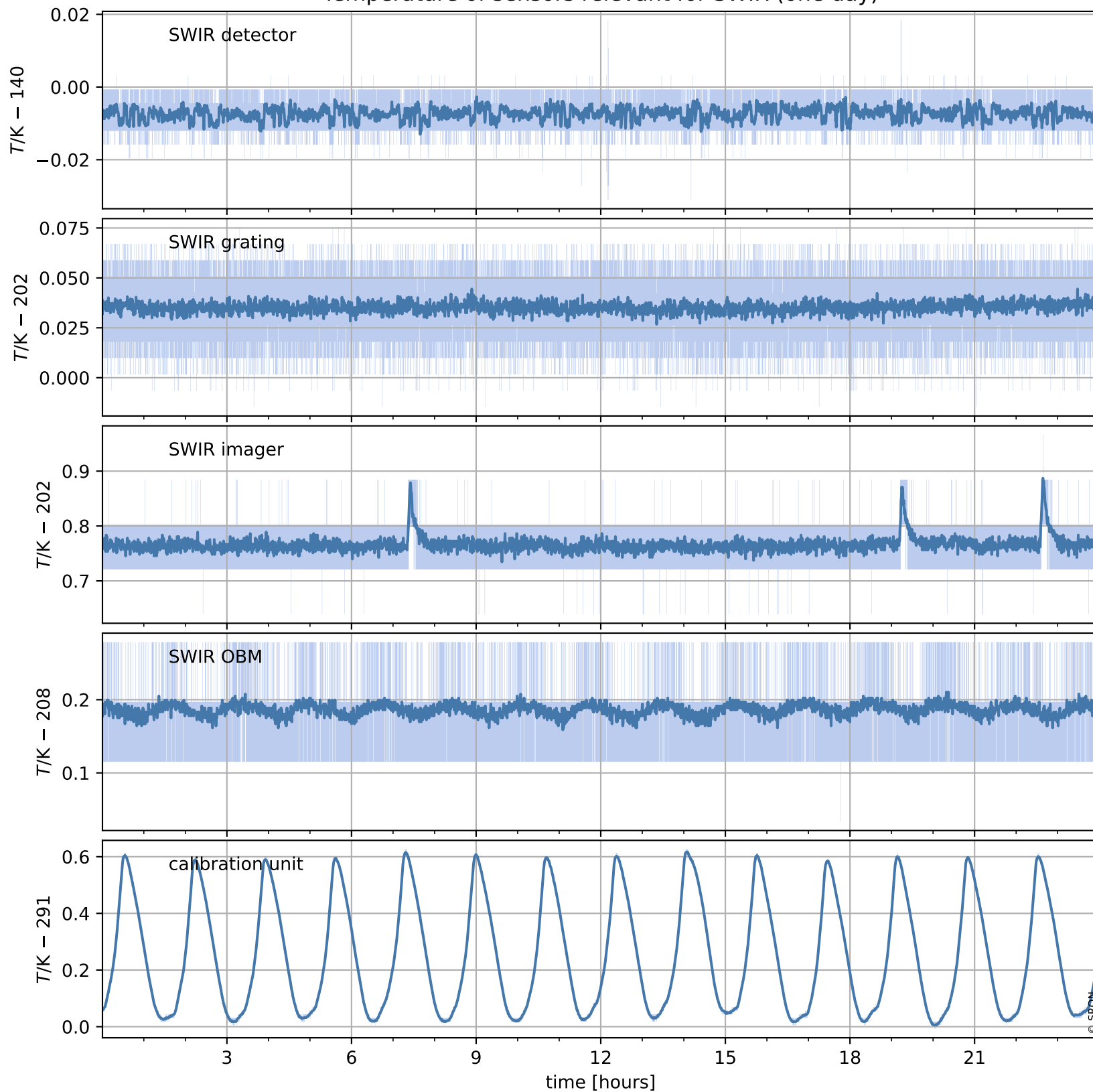


# Tropomi SWIR housekeeping data

orbits : [4237, 4250]  
coverage : 2018-08-08 / 2018-08-09  
created : 2023-08-21T08:33:32

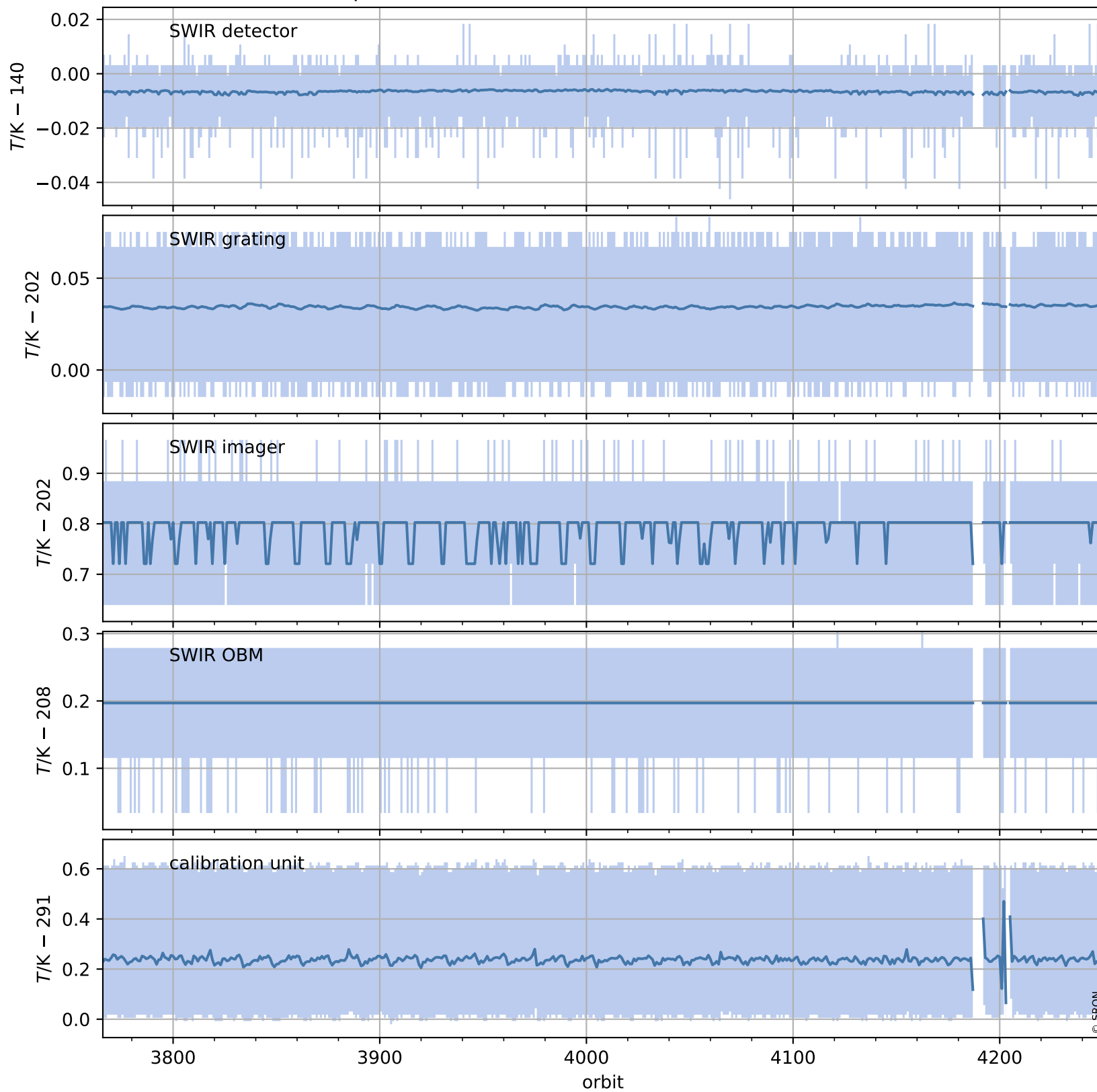
## Temperature of sensors relevant for SWIR (one day)



# Tropomi SWIR housekeeping data

orbits : [3766, 4250]  
coverage : 2018-07-05 / 2018-08-09  
created : 2023-08-21T08:33:32

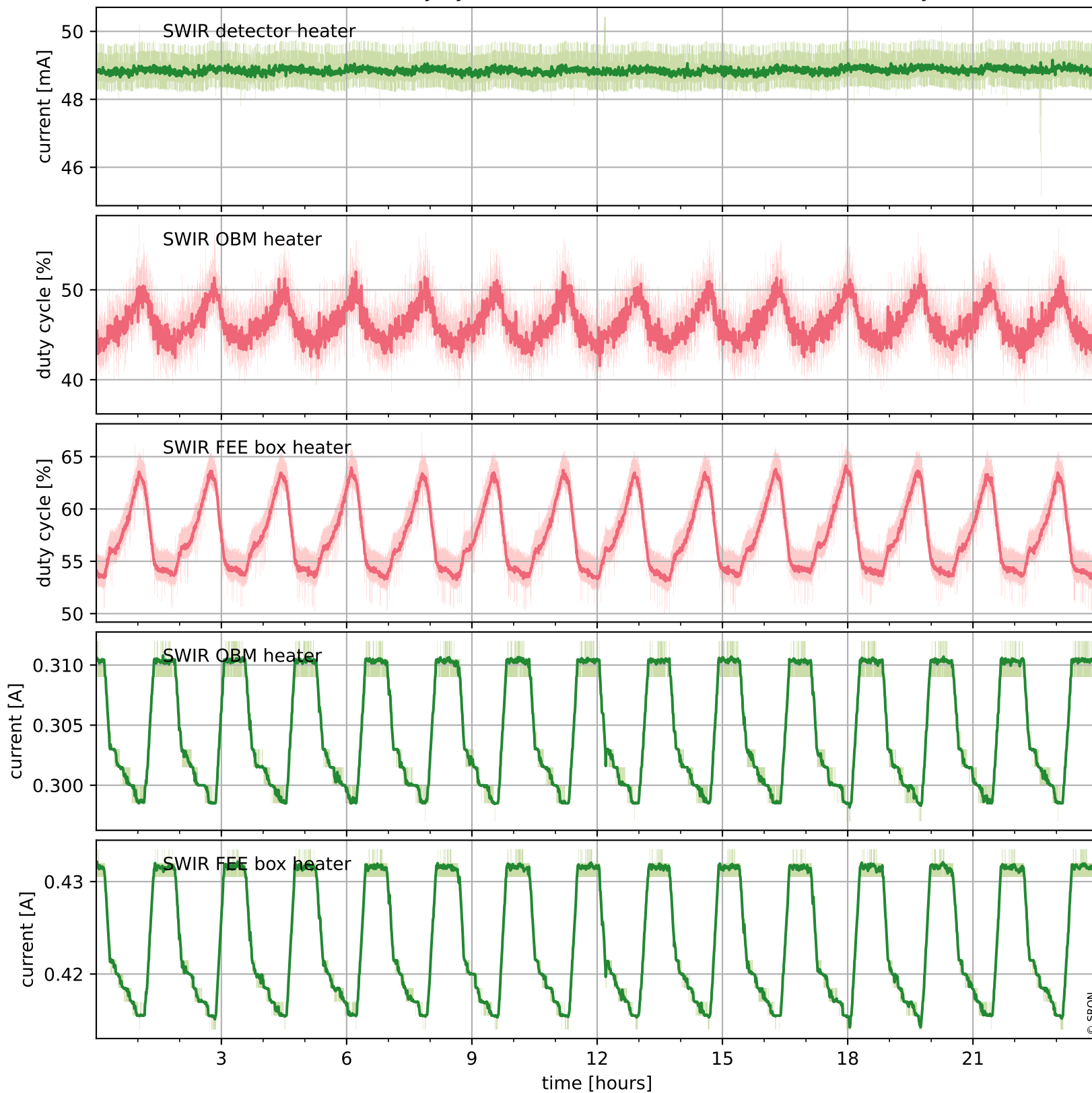
## Temperature of sensors relevant for SWIR (last month)



# Tropomi SWIR housekeeping data

orbits : [4237, 4250]  
coverage : 2018-08-08 / 2018-08-09  
created : 2023-08-21T08:33:33

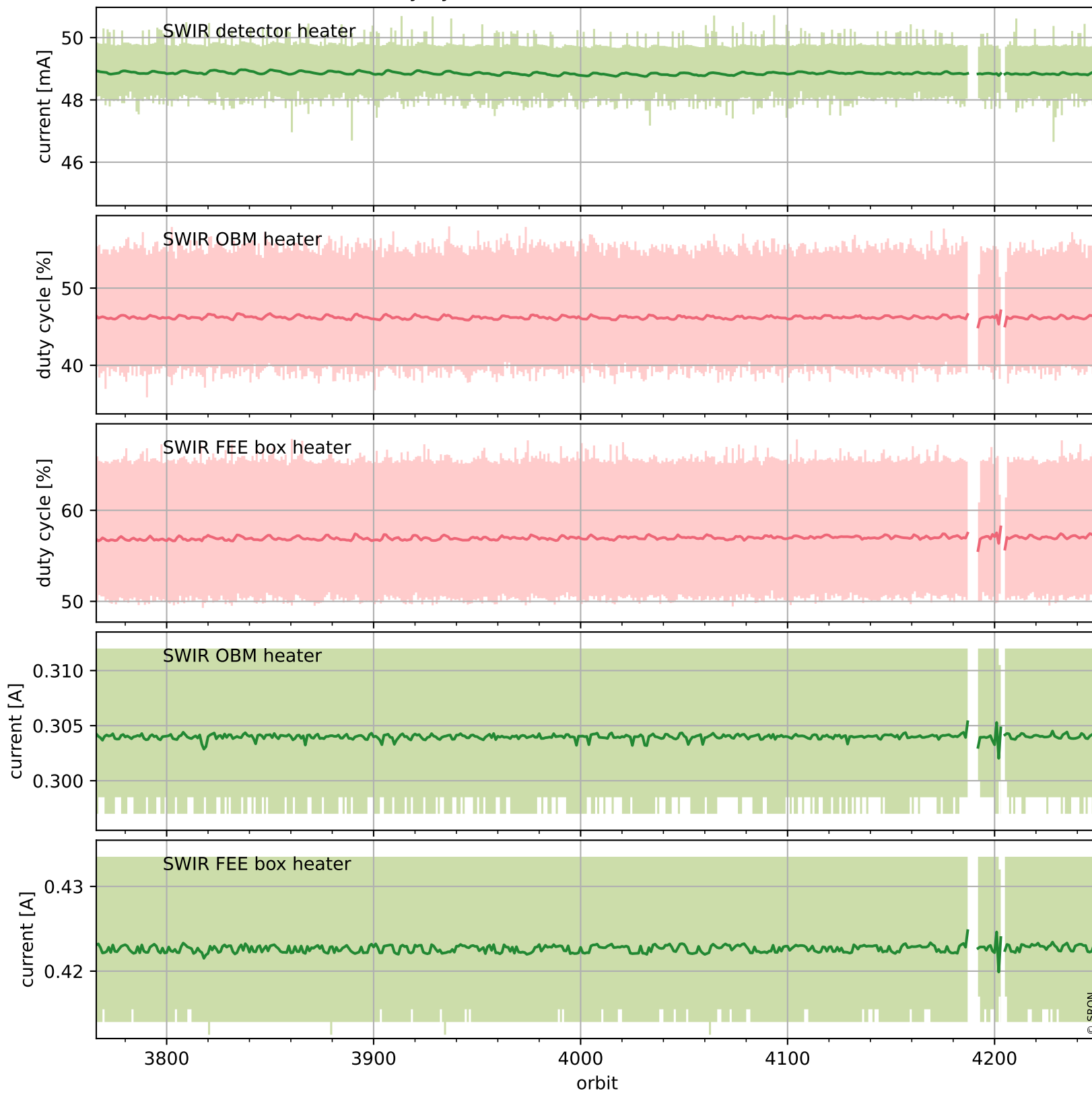
## Current and duty cycle of 3 heaters relevant for SWIR (one day)



# Tropomi SWIR housekeeping data

orbits : [3766, 4250]  
coverage : 2018-07-05 / 2018-08-09  
created : 2023-08-21T08:33:33

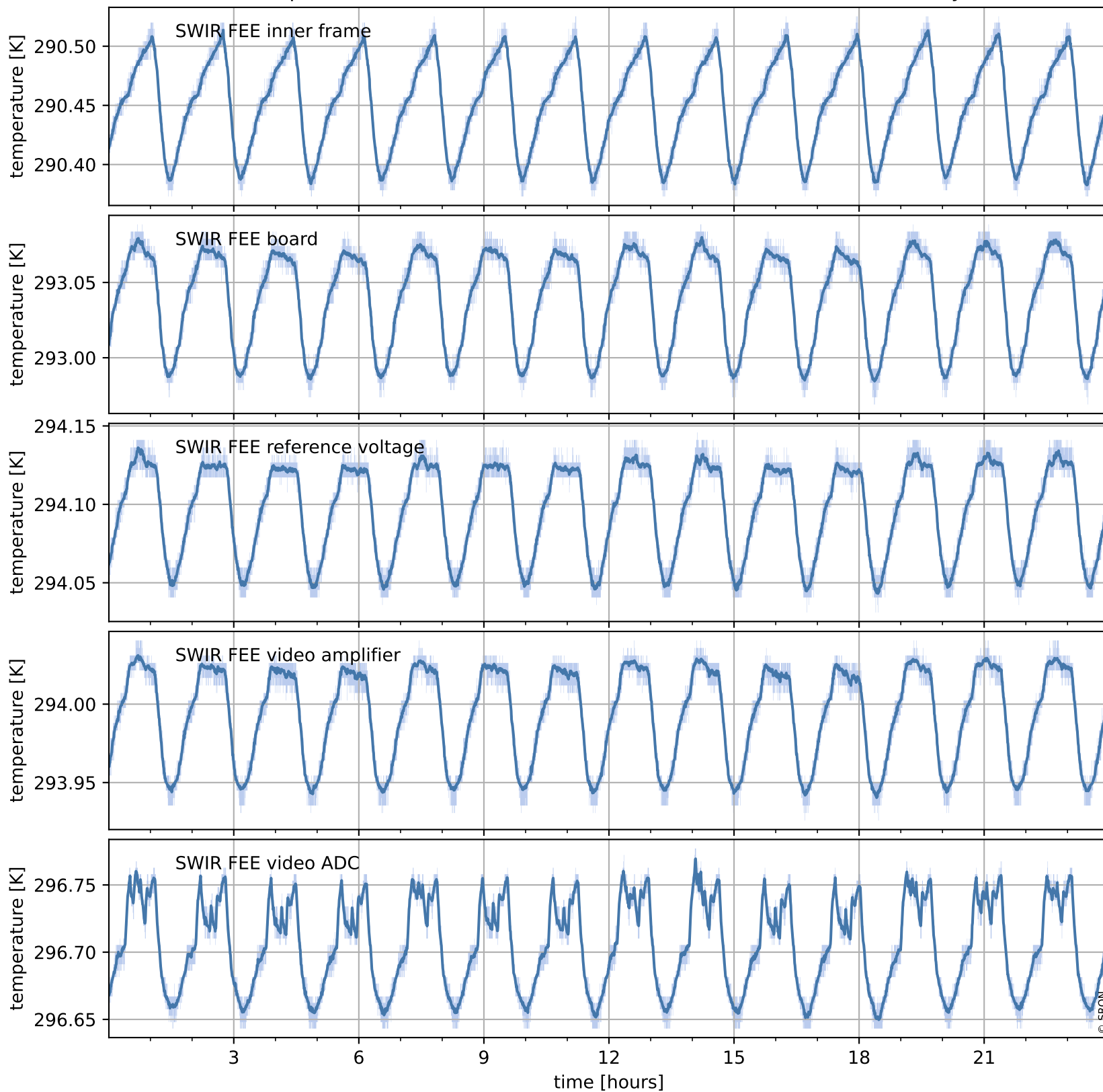
## Current and duty cycle of 3 heaters relevant for SWIR (last month)



# Tropomi SWIR housekeeping data

orbits : [4237, 4250]  
coverage : 2018-08-08 / 2018-08-09  
created : 2023-08-21T08:33:34

## Temperature of sensors at the SWIR front-end electronics (one day)



# Tropomi SWIR housekeeping data

orbits : [3766, 4250]  
coverage : 2018-07-05 / 2018-08-09  
created : 2023-08-21T08:33:34

## Temperature of sensors at the SWIR front-end electronics (last month)

