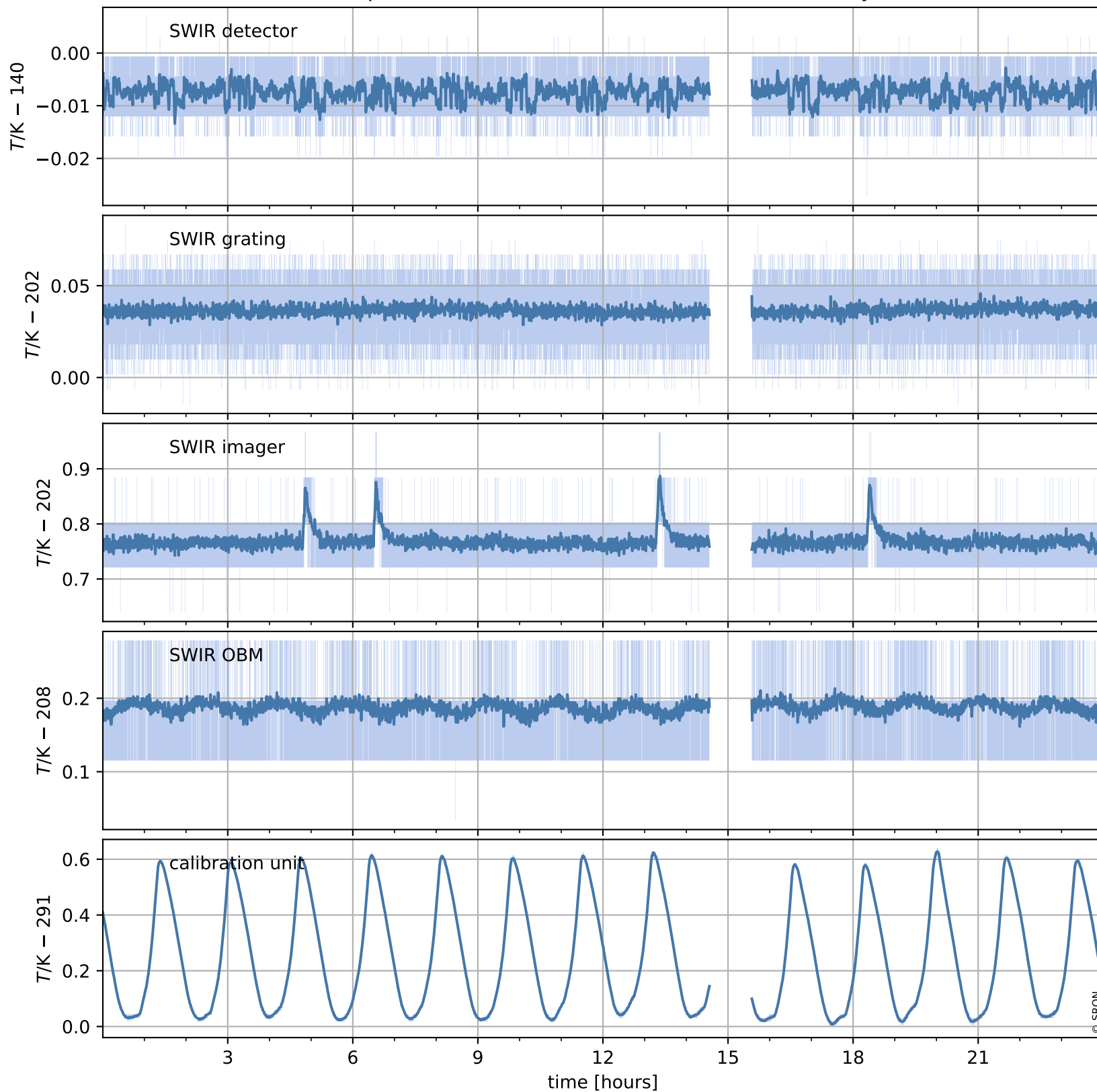


# Tropomi SWIR housekeeping data

orbits : [4351, 4364]  
coverage : 2018-08-16 / 2018-08-17  
created : 2023-08-21T08:33:49

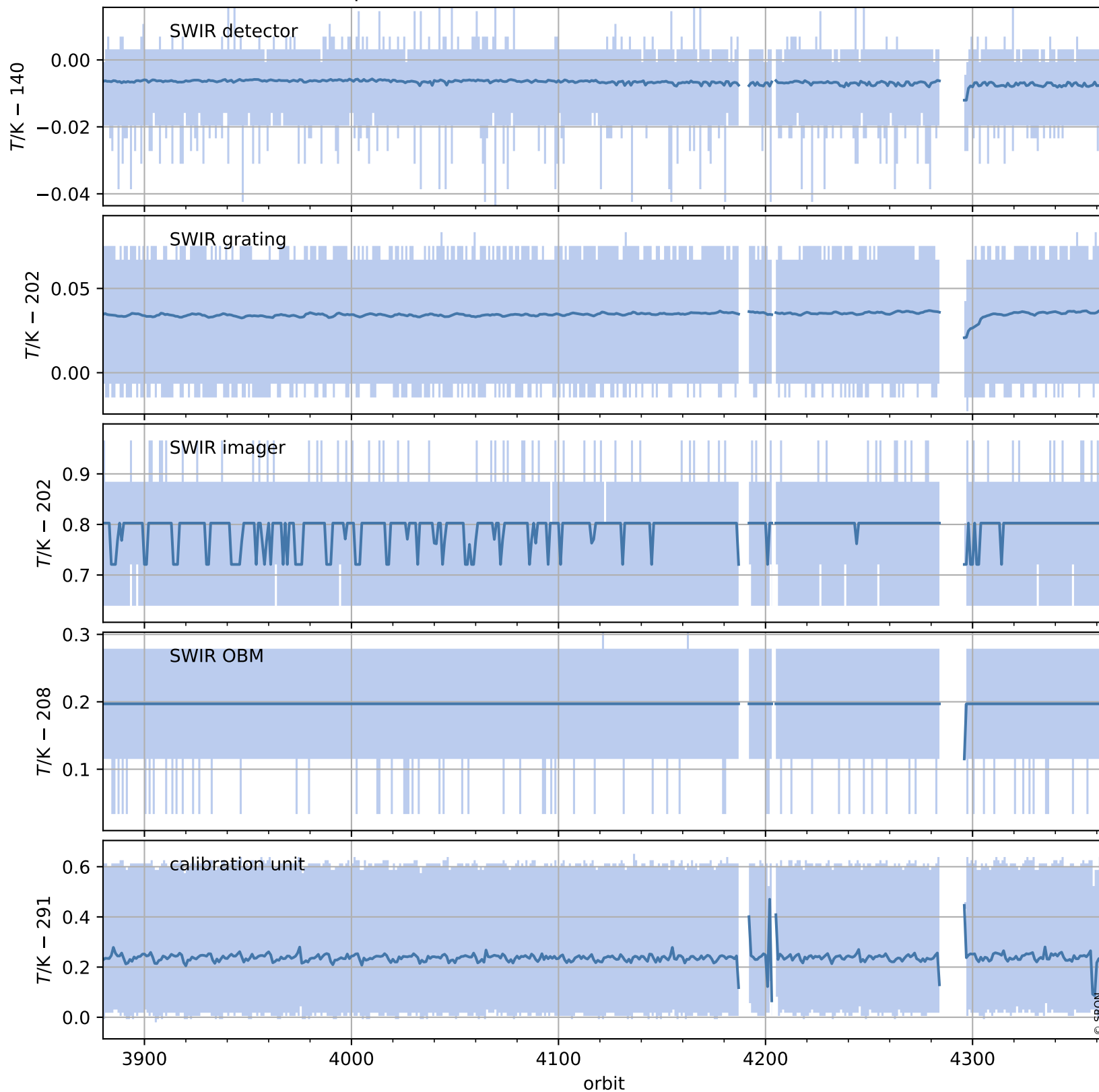
## Temperature of sensors relevant for SWIR (one day)



# Tropomi SWIR housekeeping data

orbits : [3880, 4364]  
coverage : 2018-07-13 / 2018-08-17  
created : 2023-08-21T08:33:49

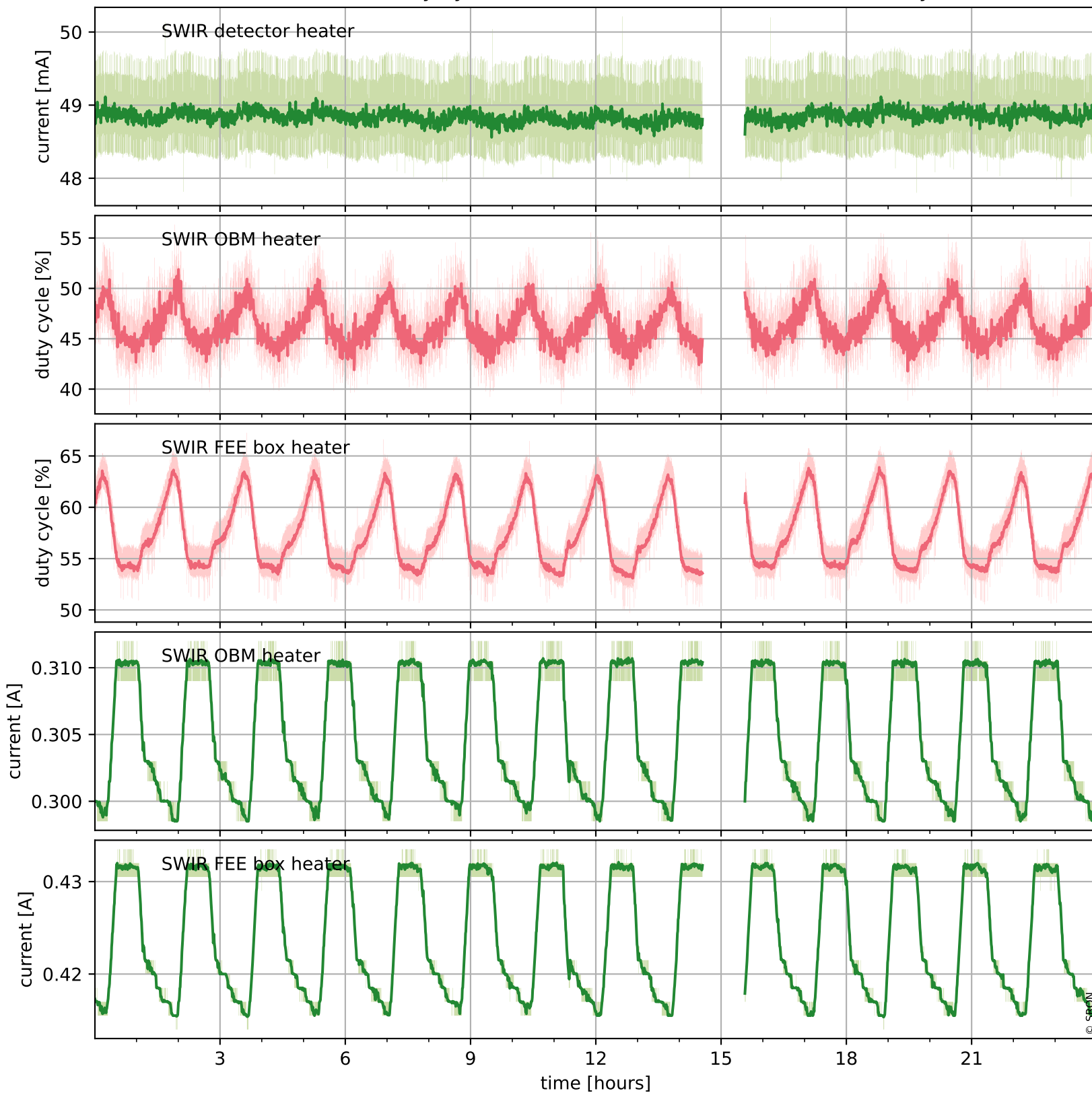
## Temperature of sensors relevant for SWIR (last month)



# Tropomi SWIR housekeeping data

orbits : [4351, 4364]  
coverage : 2018-08-16 / 2018-08-17  
created : 2023-08-21T08:33:50

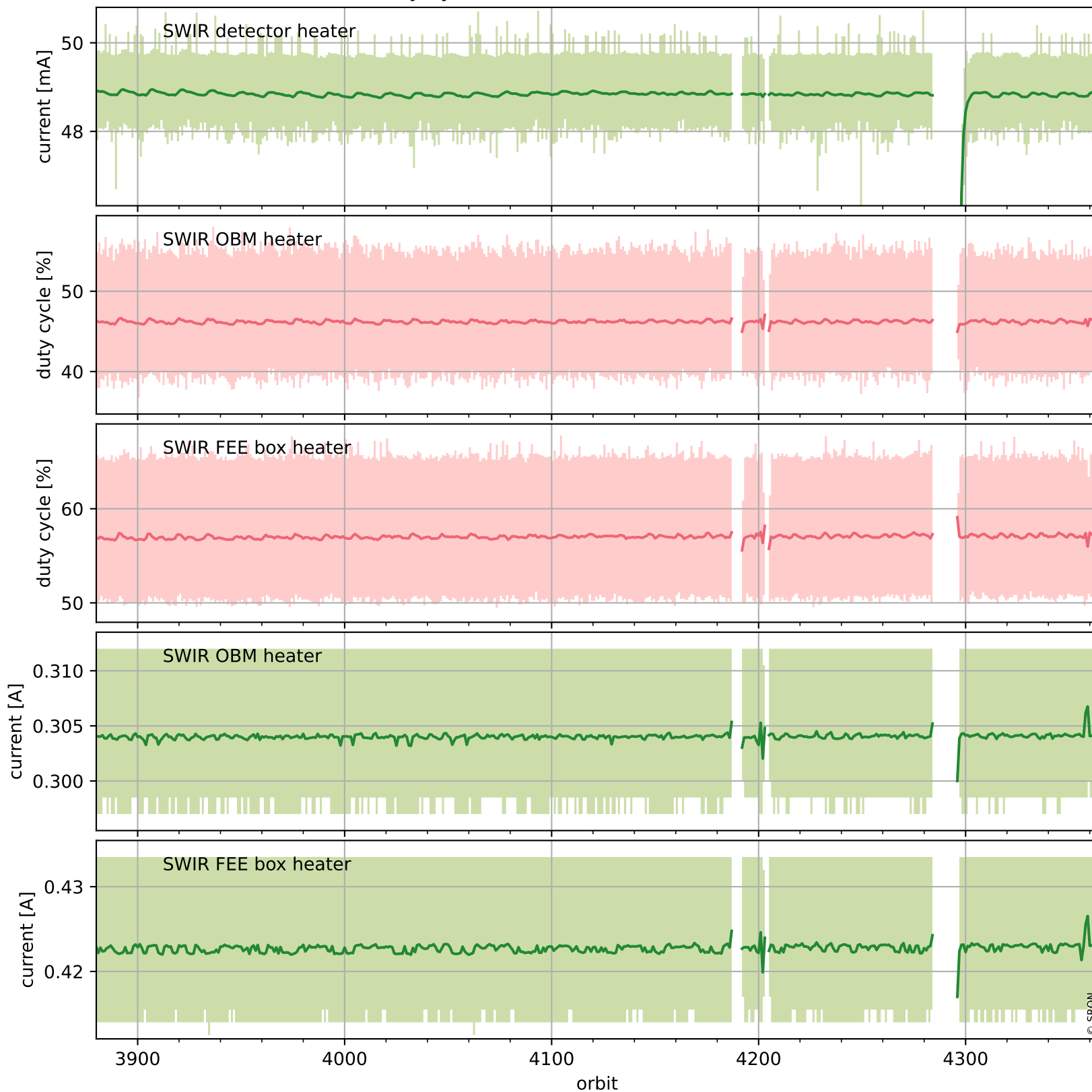
## Current and duty cycle of 3 heaters relevant for SWIR (one day)



# Tropomi SWIR housekeeping data

orbits : [3880, 4364]  
coverage : 2018-07-13 / 2018-08-17  
created : 2023-08-21T08:33:50

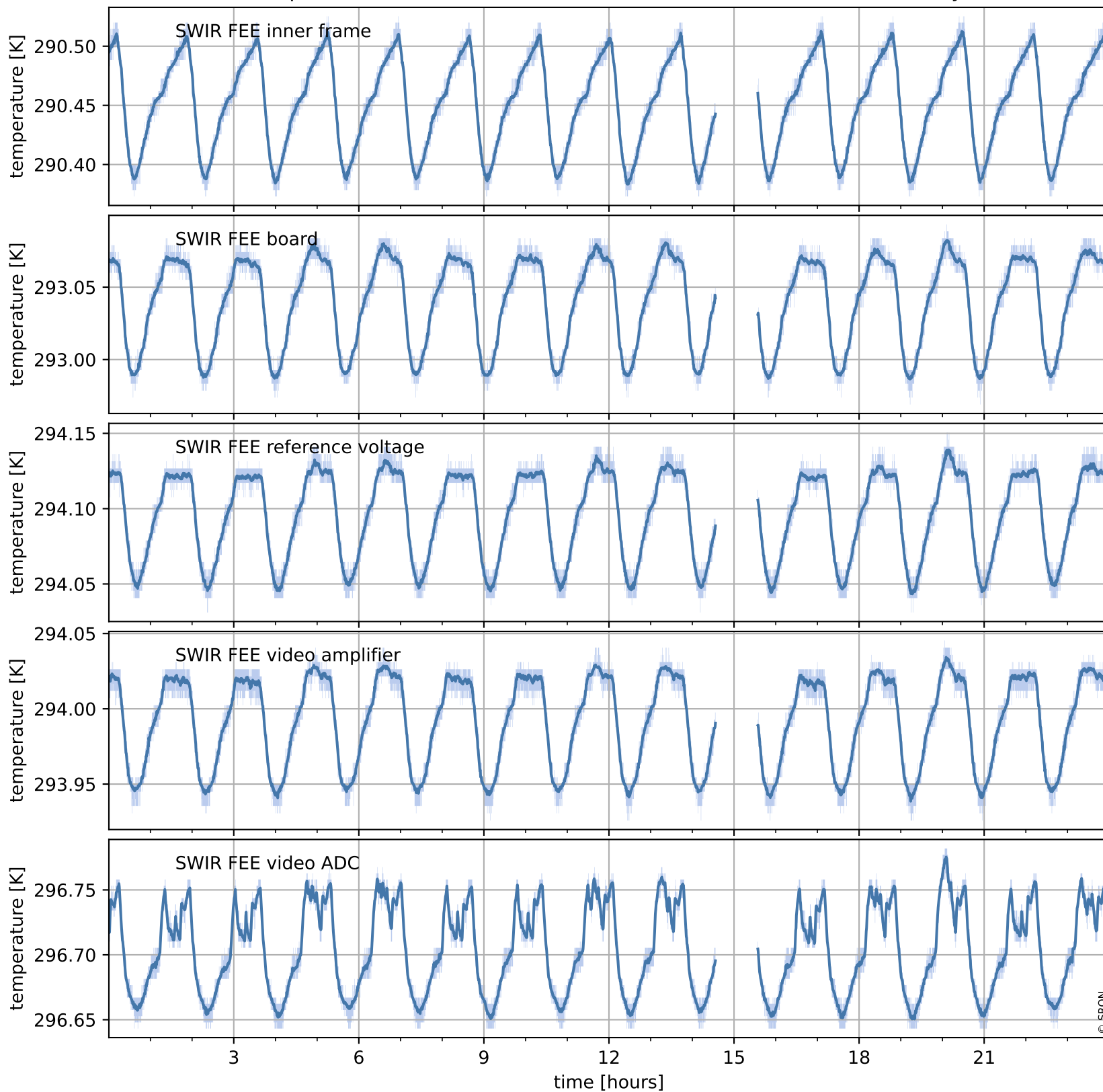
## Current and duty cycle of 3 heaters relevant for SWIR (last month)



# Tropomi SWIR housekeeping data

orbits : [4351, 4364]  
coverage : 2018-08-16 / 2018-08-17  
created : 2023-08-21T08:33:50

## Temperature of sensors at the SWIR front-end electronics (one day)



# Tropomi SWIR housekeeping data

orbits : [3880, 4364]  
coverage : 2018-07-13 / 2018-08-17  
created : 2023-08-21T08:33:51

## Temperature of sensors at the SWIR front-end electronics (last month)

