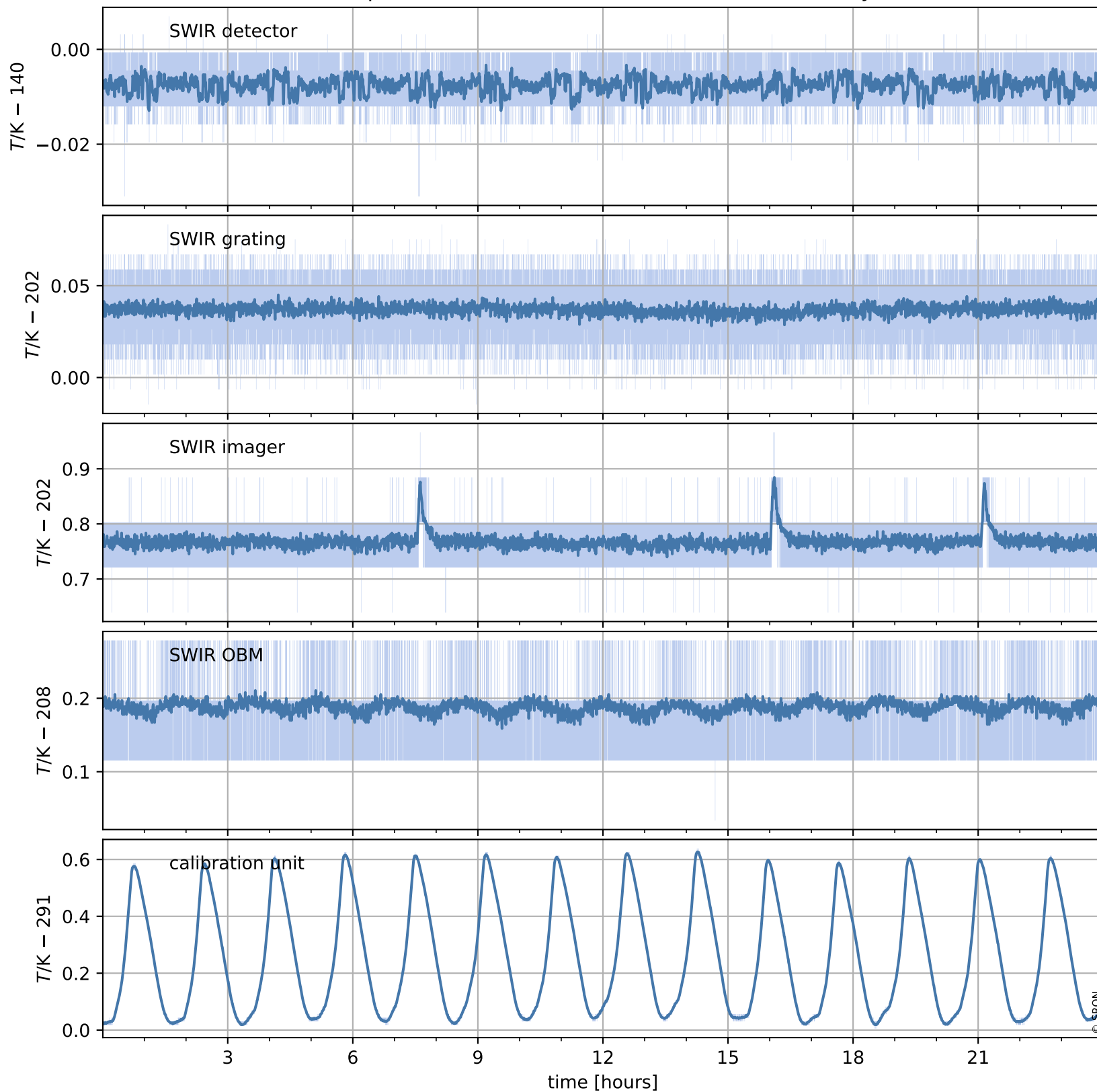


Tropomi SWIR housekeeping data

orbits : [4379, 4392]
coverage : 2018-08-18 / 2018-08-19
created : 2023-08-21T08:33:54

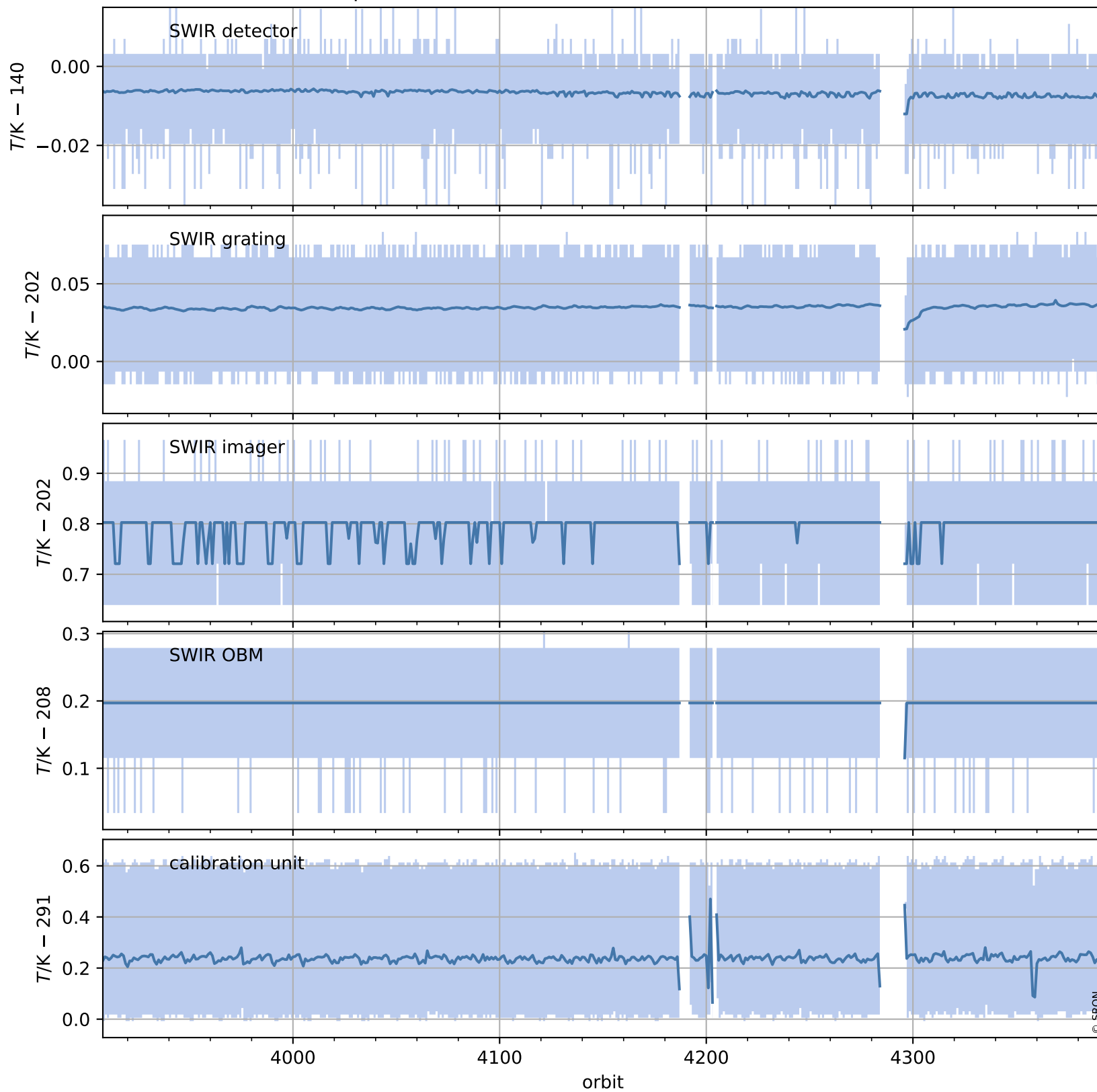
Temperature of sensors relevant for SWIR (one day)



Tropomi SWIR housekeeping data

orbits : [3908, 4392]
coverage : 2018-07-15 / 2018-08-19
created : 2023-08-21T08:33:54

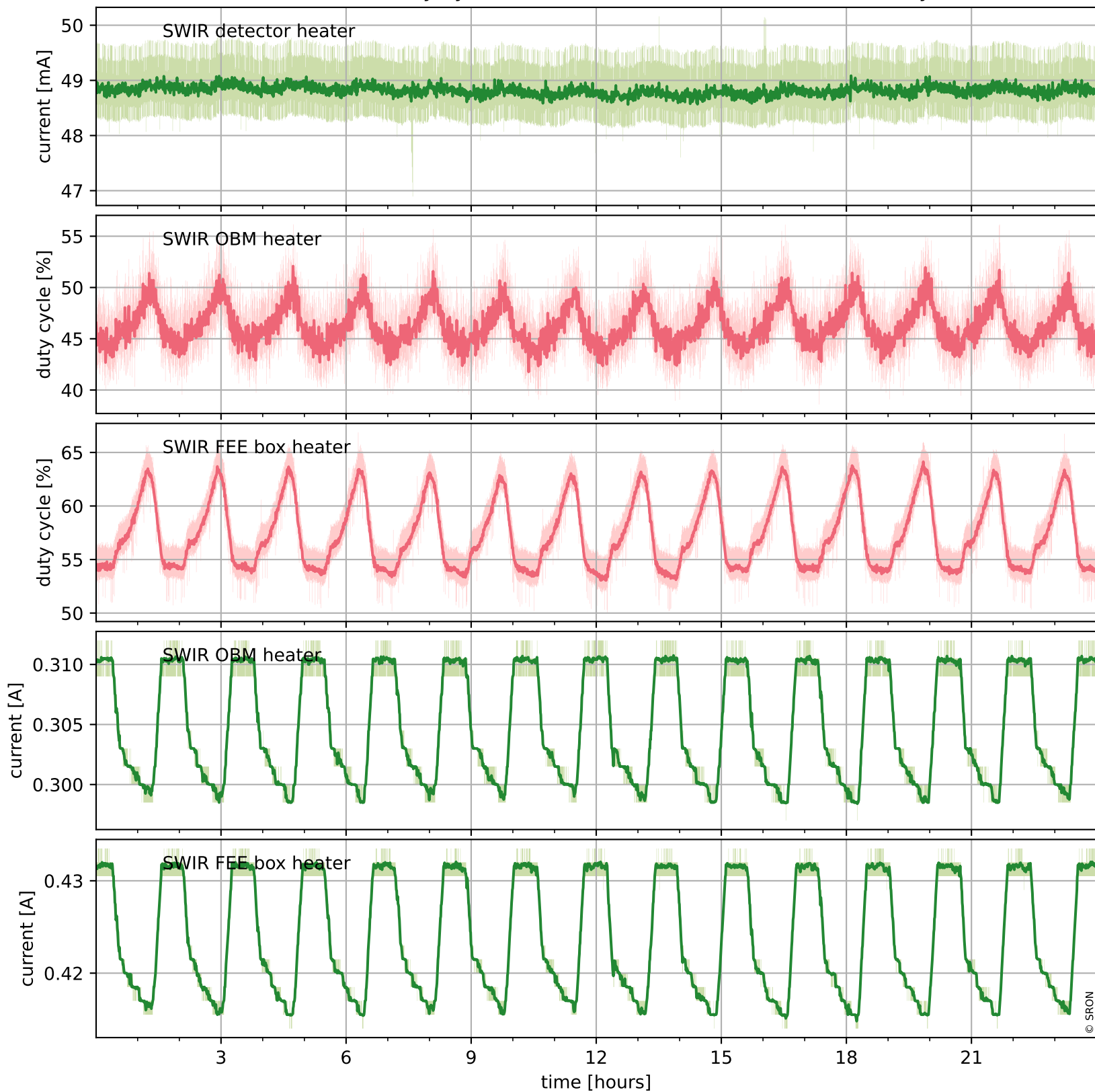
Temperature of sensors relevant for SWIR (last month)



Tropomi SWIR housekeeping data

orbits : [4379, 4392]
coverage : 2018-08-18 / 2018-08-19
created : 2023-08-21T08:33:55

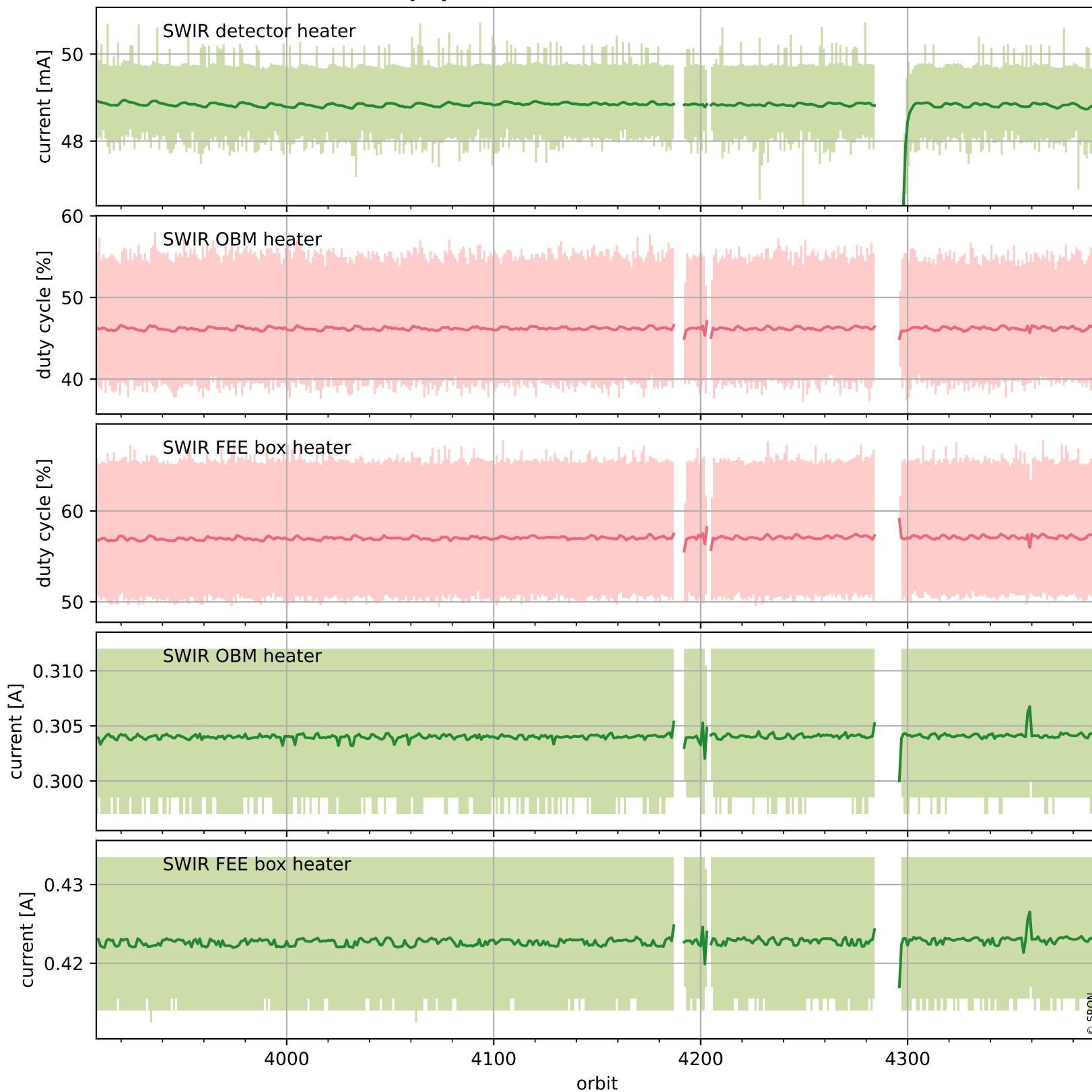
Current and duty cycle of 3 heaters relevant for SWIR (one day)



Tropomi SWIR housekeeping data

orbits : [3908, 4392]
coverage : 2018-07-15 / 2018-08-19
created : 2023-08-21T08:33:55

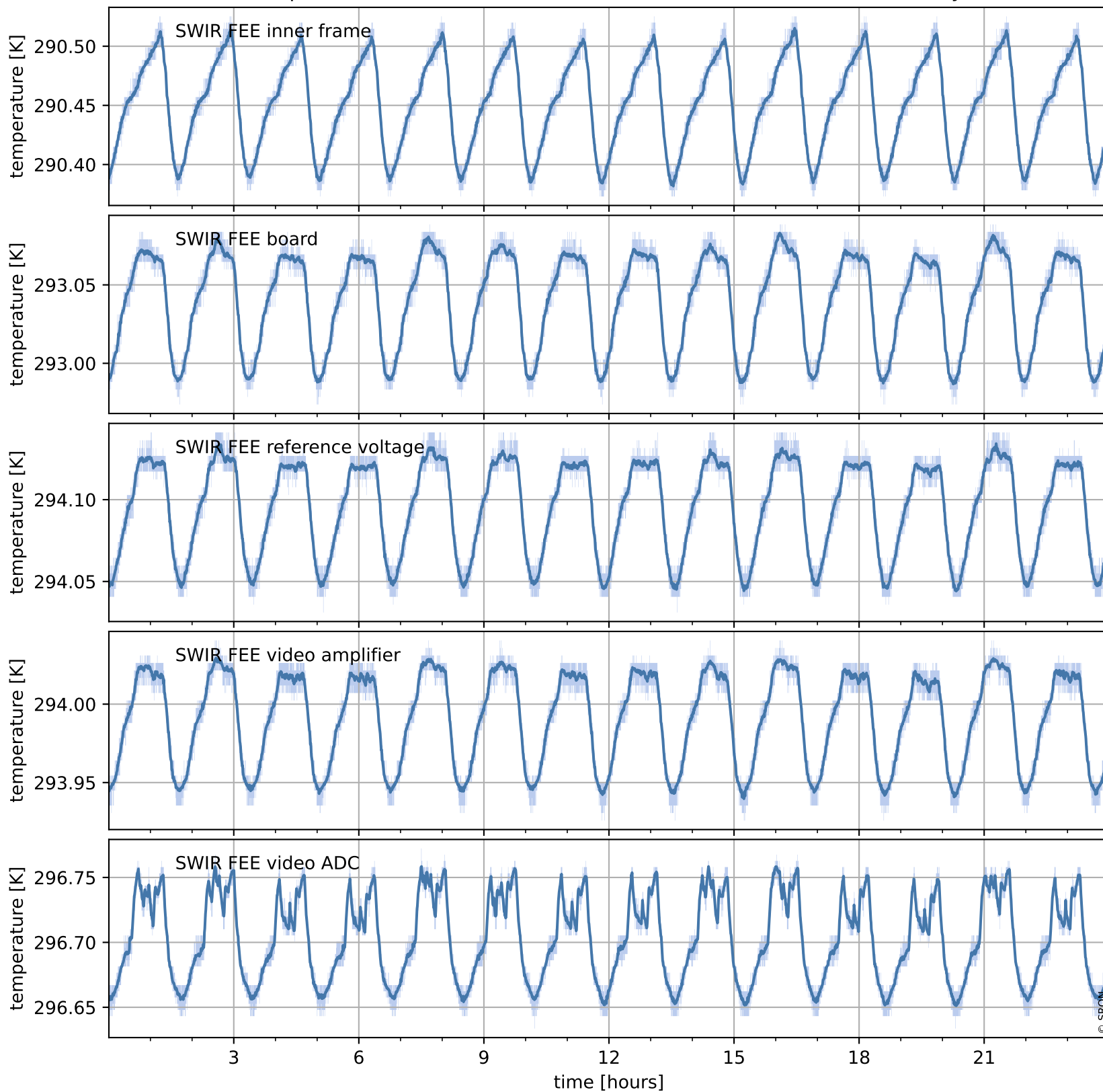
Current and duty cycle of 3 heaters relevant for SWIR (last month)



Tropomi SWIR housekeeping data

orbits : [4379, 4392]
coverage : 2018-08-18 / 2018-08-19
created : 2023-08-21T08:33:55

Temperature of sensors at the SWIR front-end electronics (one day)



Tropomi SWIR housekeeping data

orbits : [3908, 4392]
coverage : 2018-07-15 / 2018-08-19
created : 2023-08-21T08:33:56

Temperature of sensors at the SWIR front-end electronics (last month)

