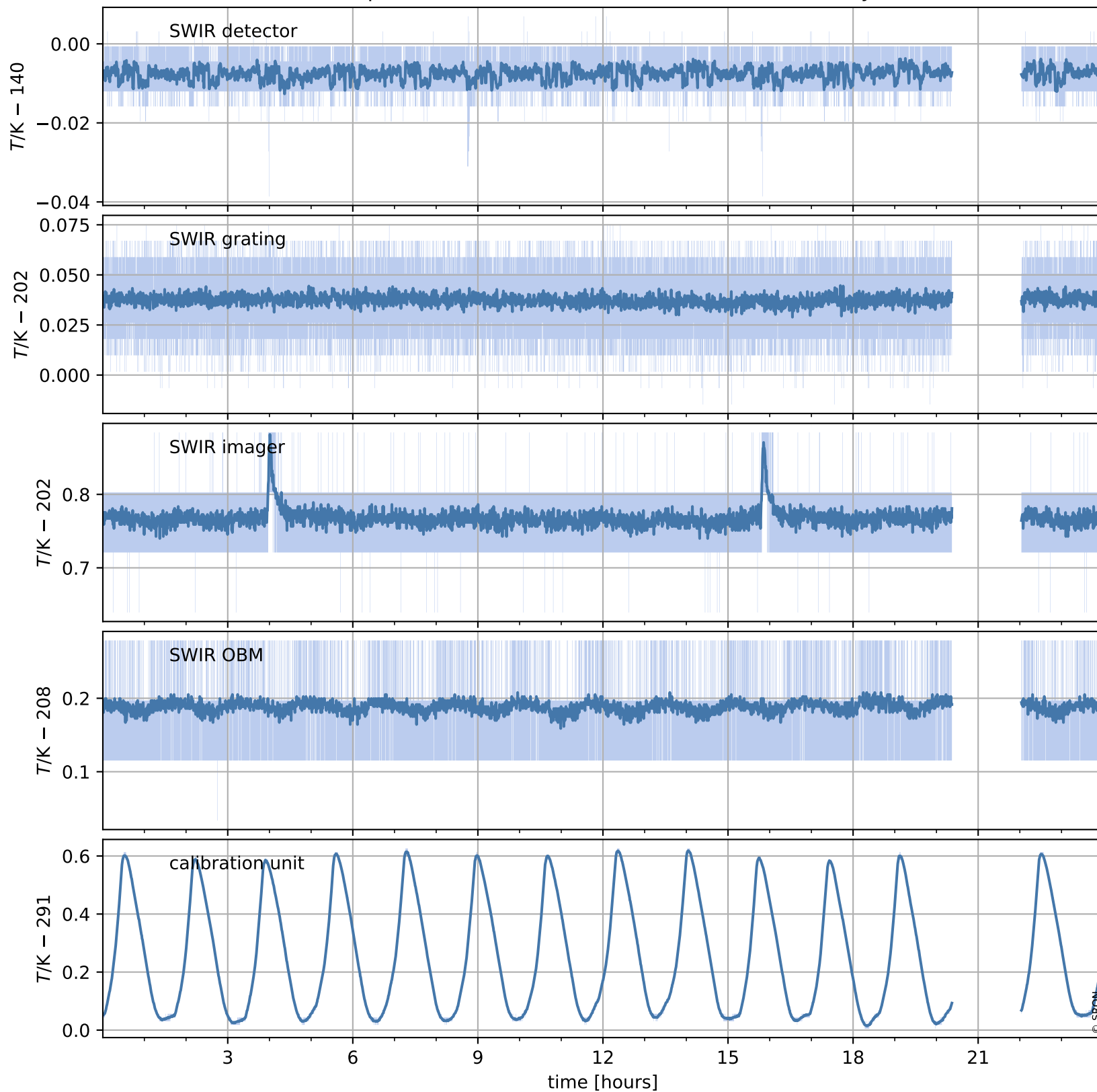


# Tropomi SWIR housekeeping data

orbits : [4464, 4477]  
coverage : 2018-08-24 / 2018-08-25  
created : 2023-08-21T08:34:08

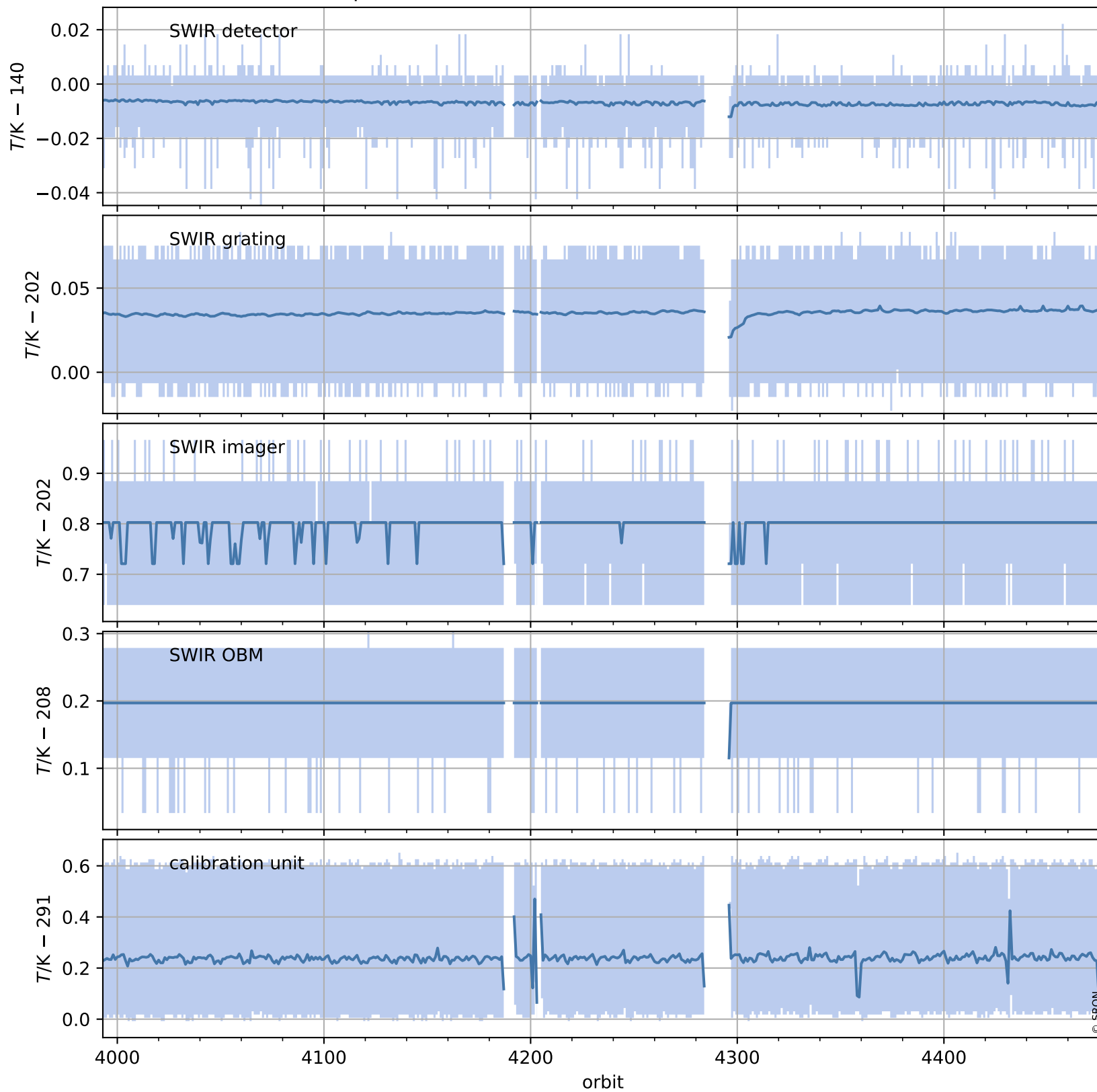
## Temperature of sensors relevant for SWIR (one day)



# Tropomi SWIR housekeeping data

orbits : [3993, 4477]  
coverage : 2018-07-21 / 2018-08-25  
created : 2023-08-21T08:34:09

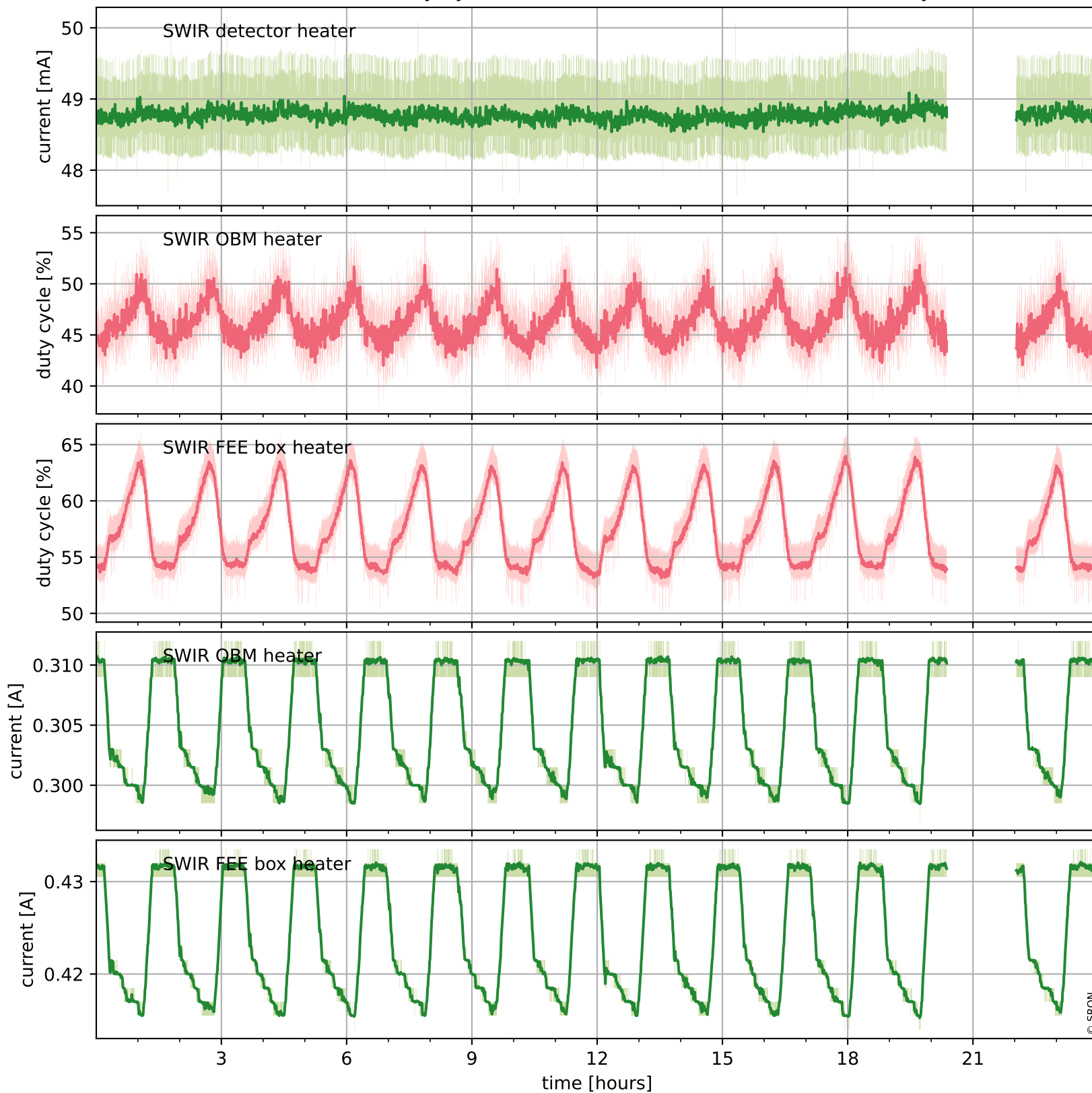
## Temperature of sensors relevant for SWIR (last month)



# Tropomi SWIR housekeeping data

orbits : [4464, 4477]  
coverage : 2018-08-24 / 2018-08-25  
created : 2023-08-21T08:34:09

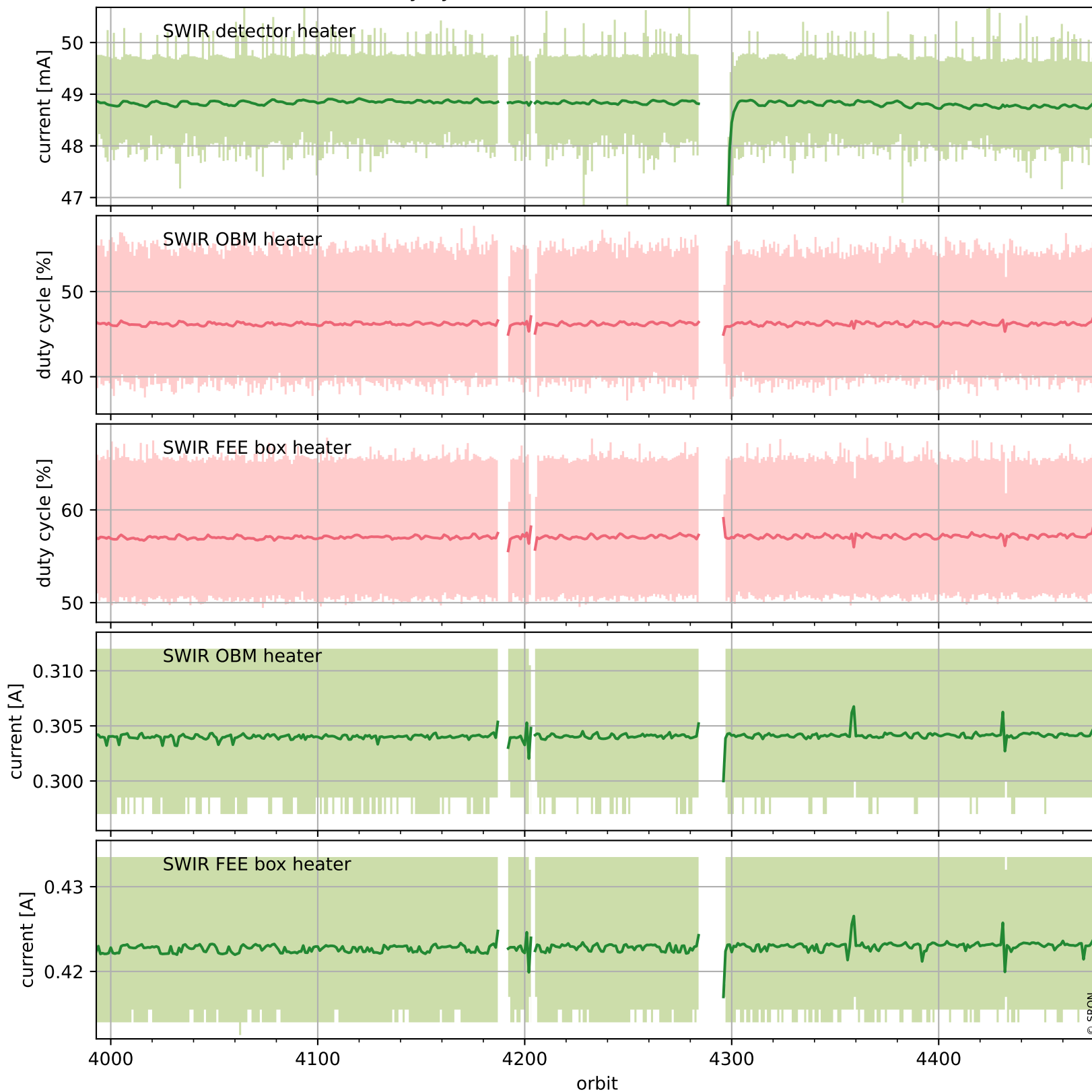
## Current and duty cycle of 3 heaters relevant for SWIR (one day)



# Tropomi SWIR housekeeping data

orbits : [3993, 4477]  
coverage : 2018-07-21 / 2018-08-25  
created : 2023-08-21T08:34:09

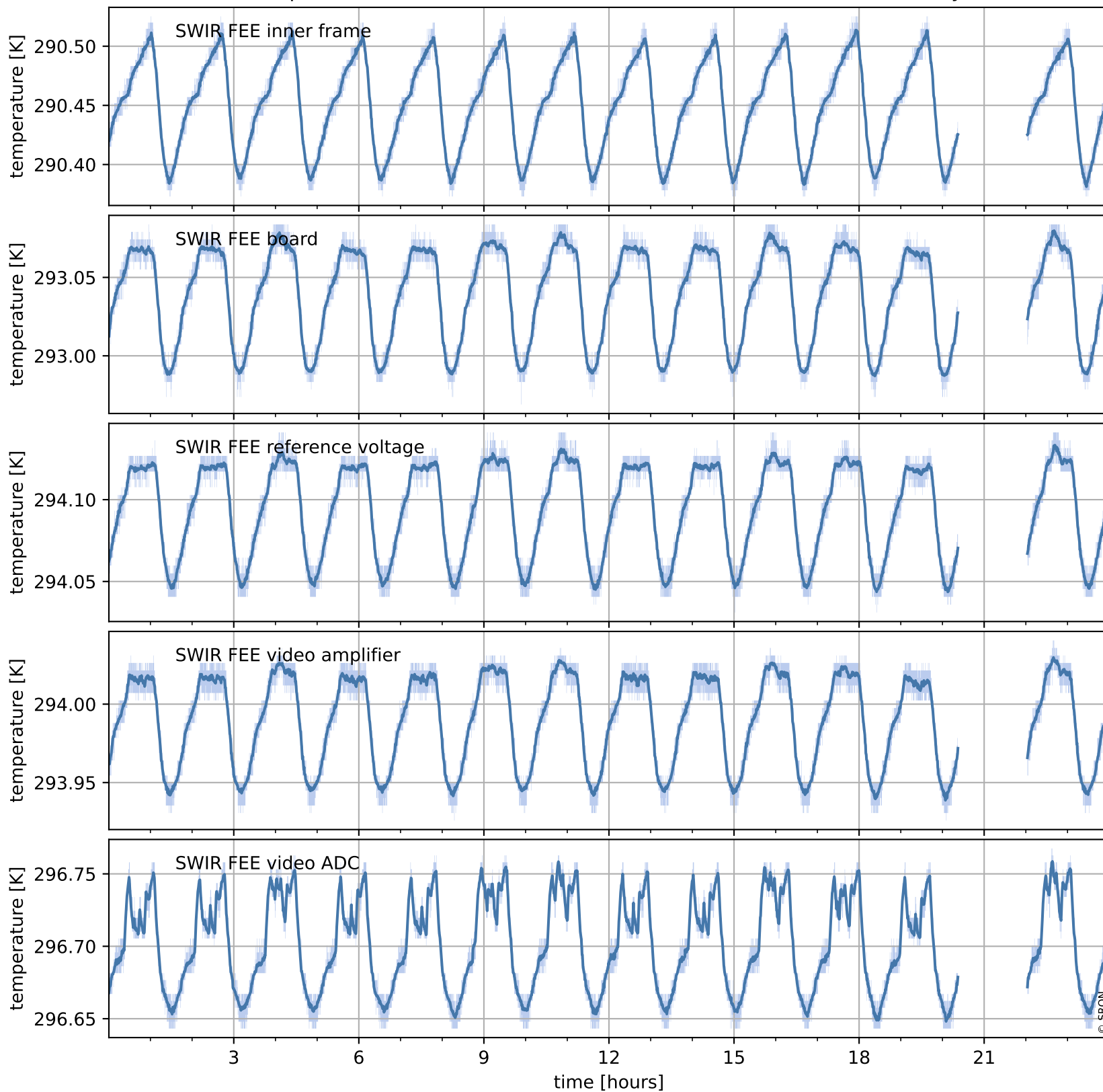
## Current and duty cycle of 3 heaters relevant for SWIR (last month)



# Tropomi SWIR housekeeping data

orbits : [4464, 4477]  
coverage : 2018-08-24 / 2018-08-25  
created : 2023-08-21T08:34:10

## Temperature of sensors at the SWIR front-end electronics (one day)



# Tropomi SWIR housekeeping data

orbits : [3993, 4477]  
coverage : 2018-07-21 / 2018-08-25  
created : 2023-08-21T08:34:10

## Temperature of sensors at the SWIR front-end electronics (last month)

