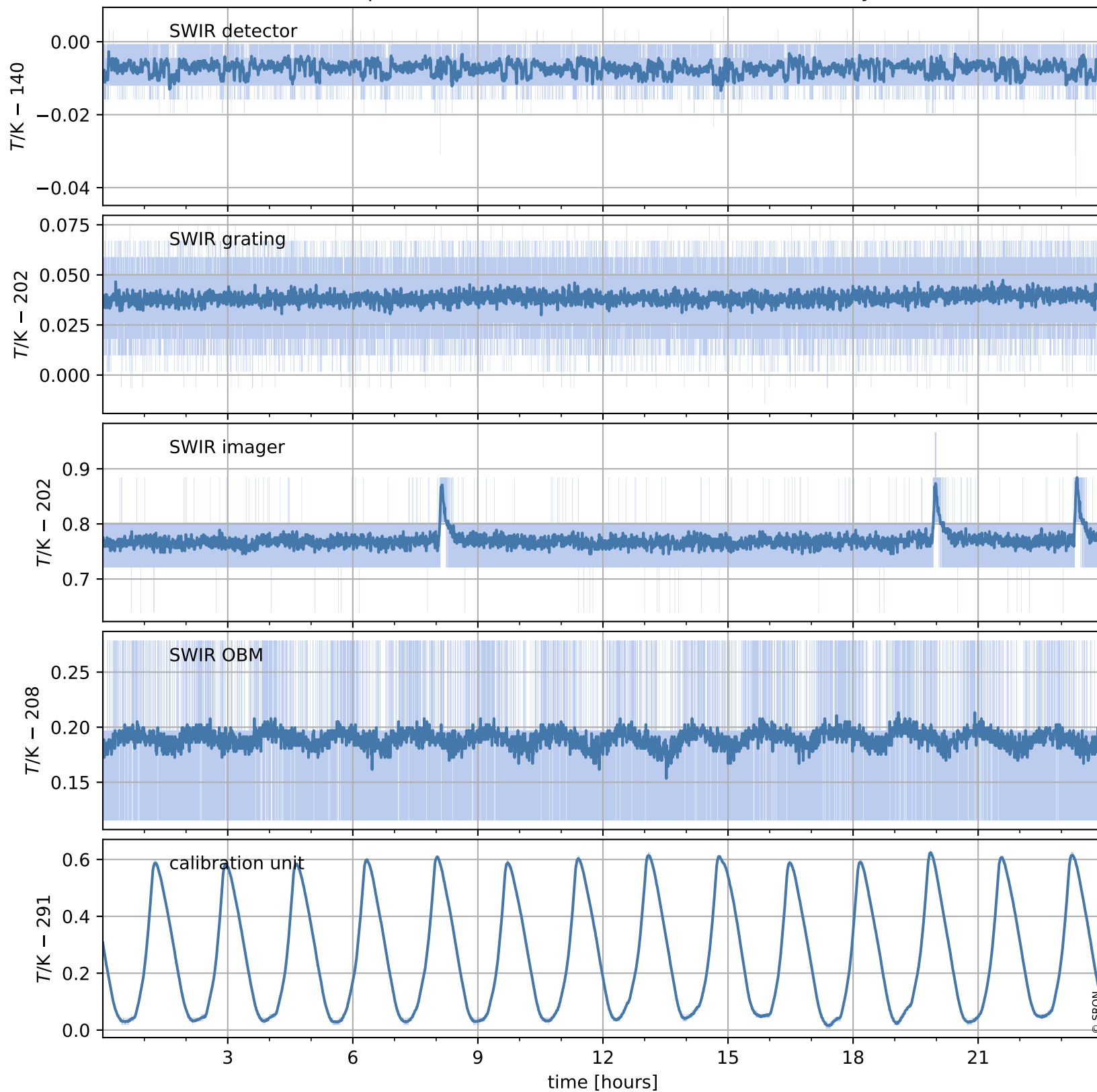


# Tropomi SWIR housekeeping data

orbits : [4507, 4520]  
coverage : 2018-08-27 / 2018-08-28  
created : 2023-08-21T08:34:16

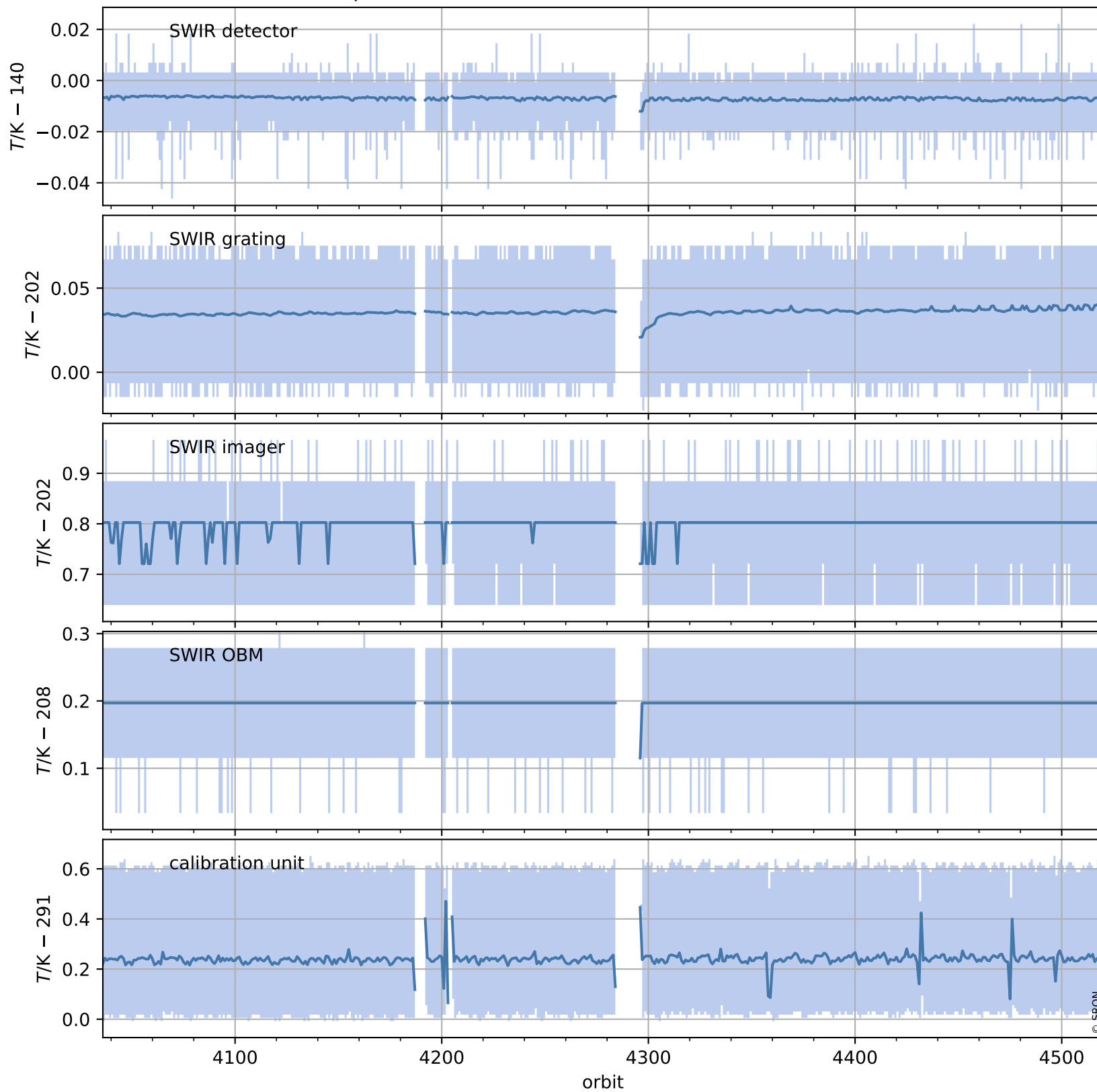
## Temperature of sensors relevant for SWIR (one day)



# Tropomi SWIR housekeeping data

orbits : [4036, 4520]  
coverage : 2018-07-24 / 2018-08-28  
created : 2023-08-21T08:34:16

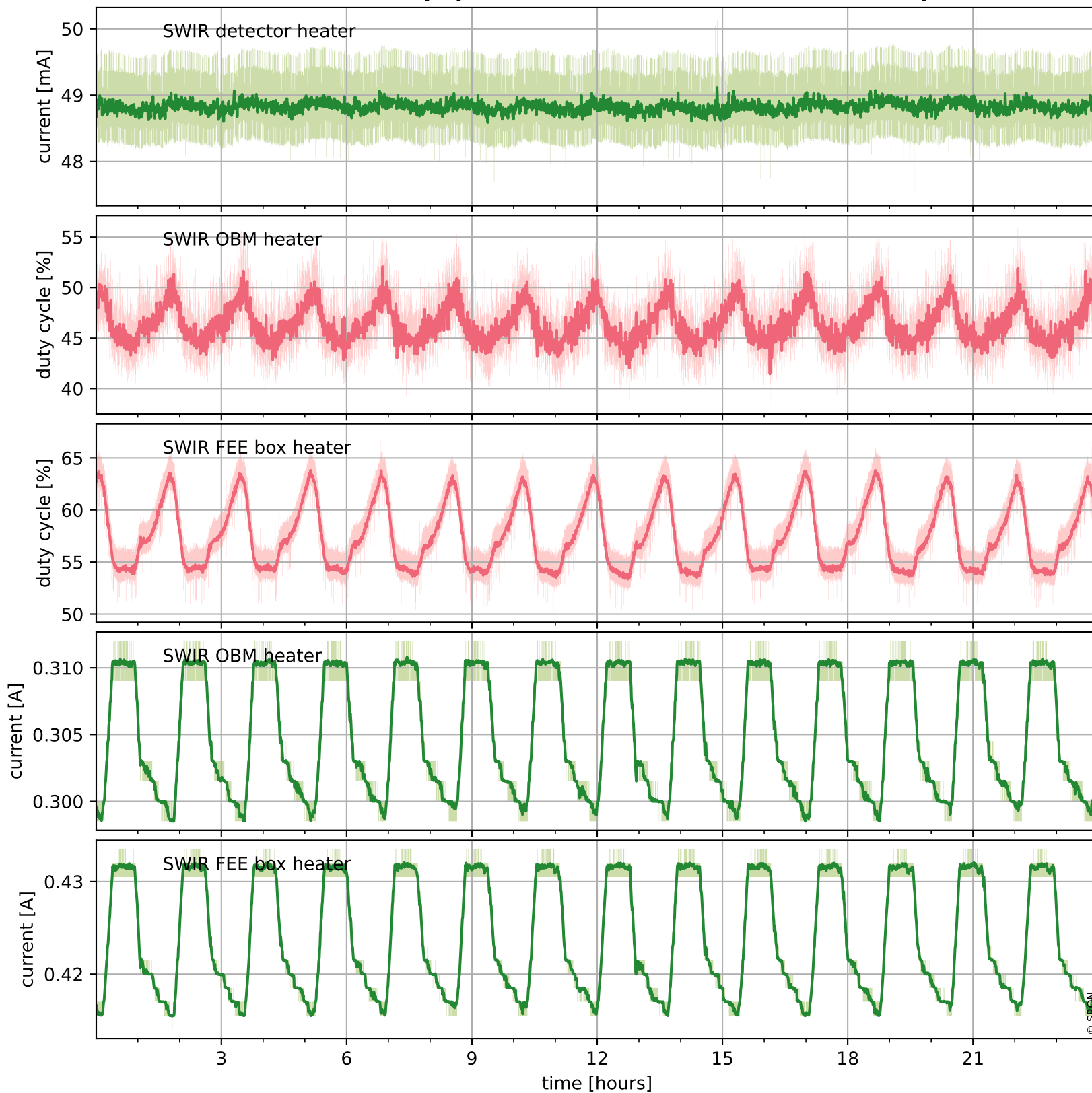
## Temperature of sensors relevant for SWIR (last month)



# Tropomi SWIR housekeeping data

orbits : [4507, 4520]  
coverage : 2018-08-27 / 2018-08-28  
created : 2023-08-21T08:34:16

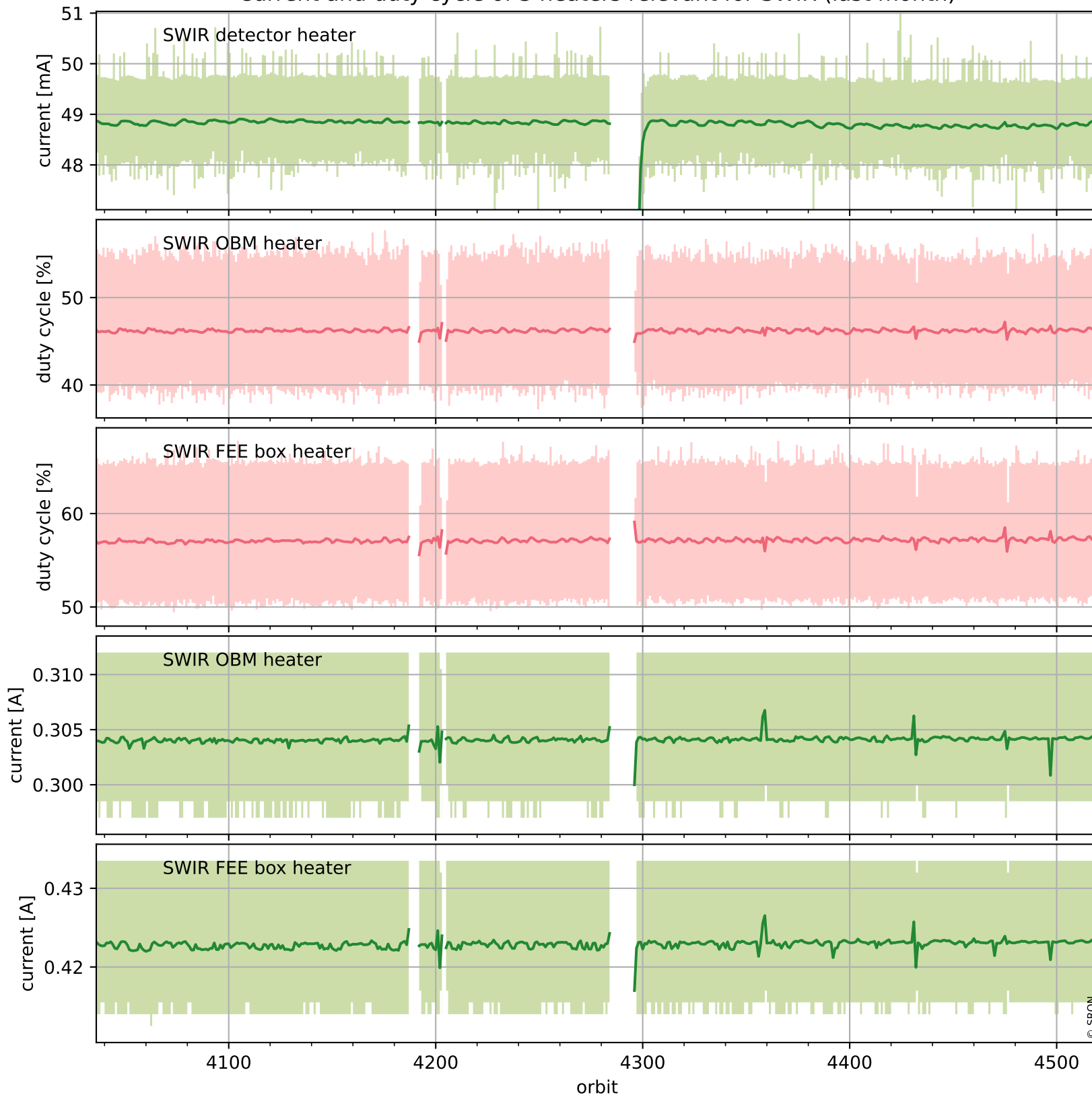
## Current and duty cycle of 3 heaters relevant for SWIR (one day)



# Tropomi SWIR housekeeping data

orbits : [4036, 4520]  
coverage : 2018-07-24 / 2018-08-28  
created : 2023-08-21T08:34:17

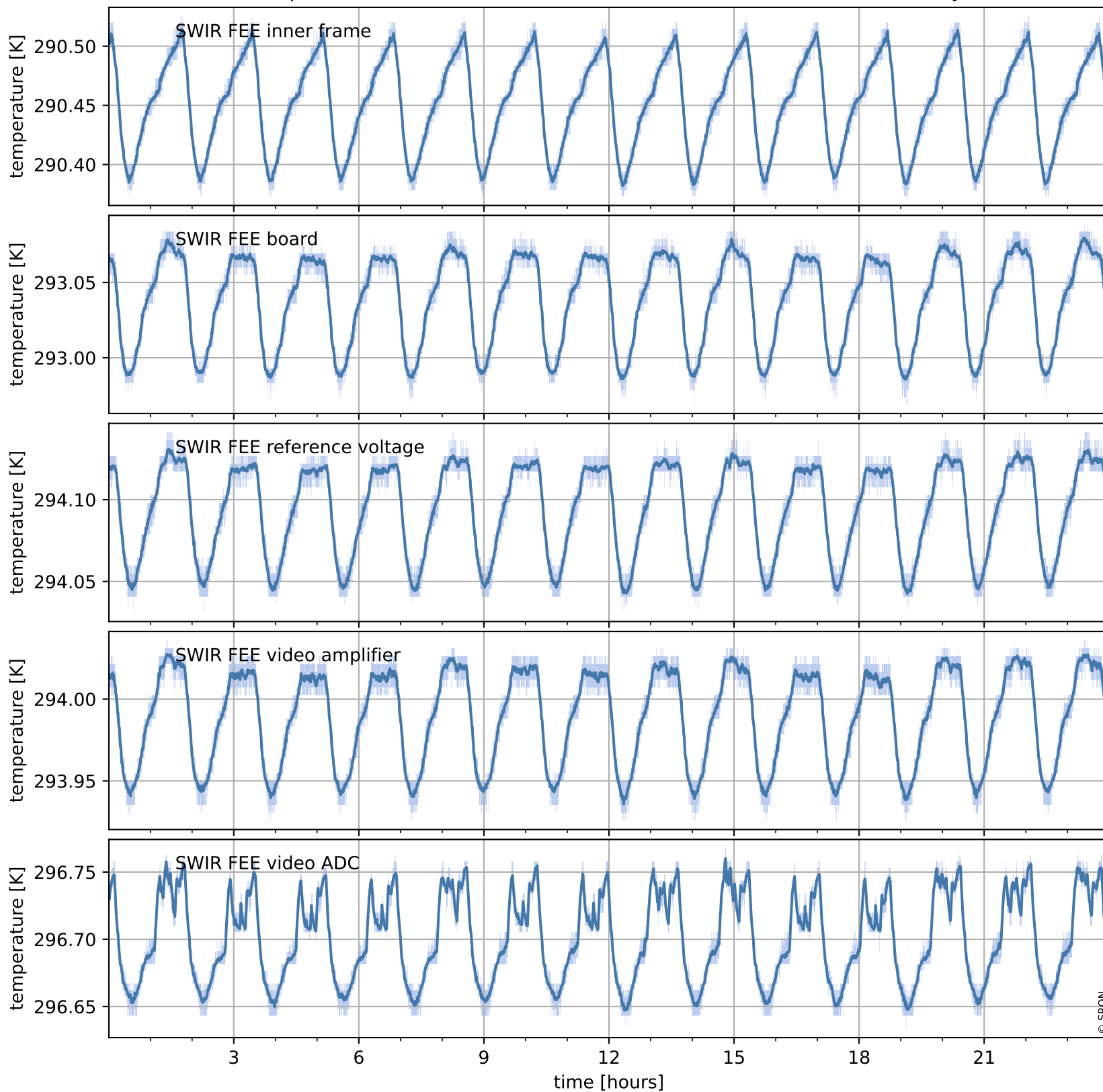
## Current and duty cycle of 3 heaters relevant for SWIR (last month)



# Tropomi SWIR housekeeping data

orbits : [4507, 4520]  
coverage : 2018-08-27 / 2018-08-28  
created : 2023-08-21T08:34:17

## Temperature of sensors at the SWIR front-end electronics (one day)



# Tropomi SWIR housekeeping data

orbits : [4036, 4520]  
coverage : 2018-07-24 / 2018-08-28  
created : 2023-08-21T08:34:17

## Temperature of sensors at the SWIR front-end electronics (last month)

