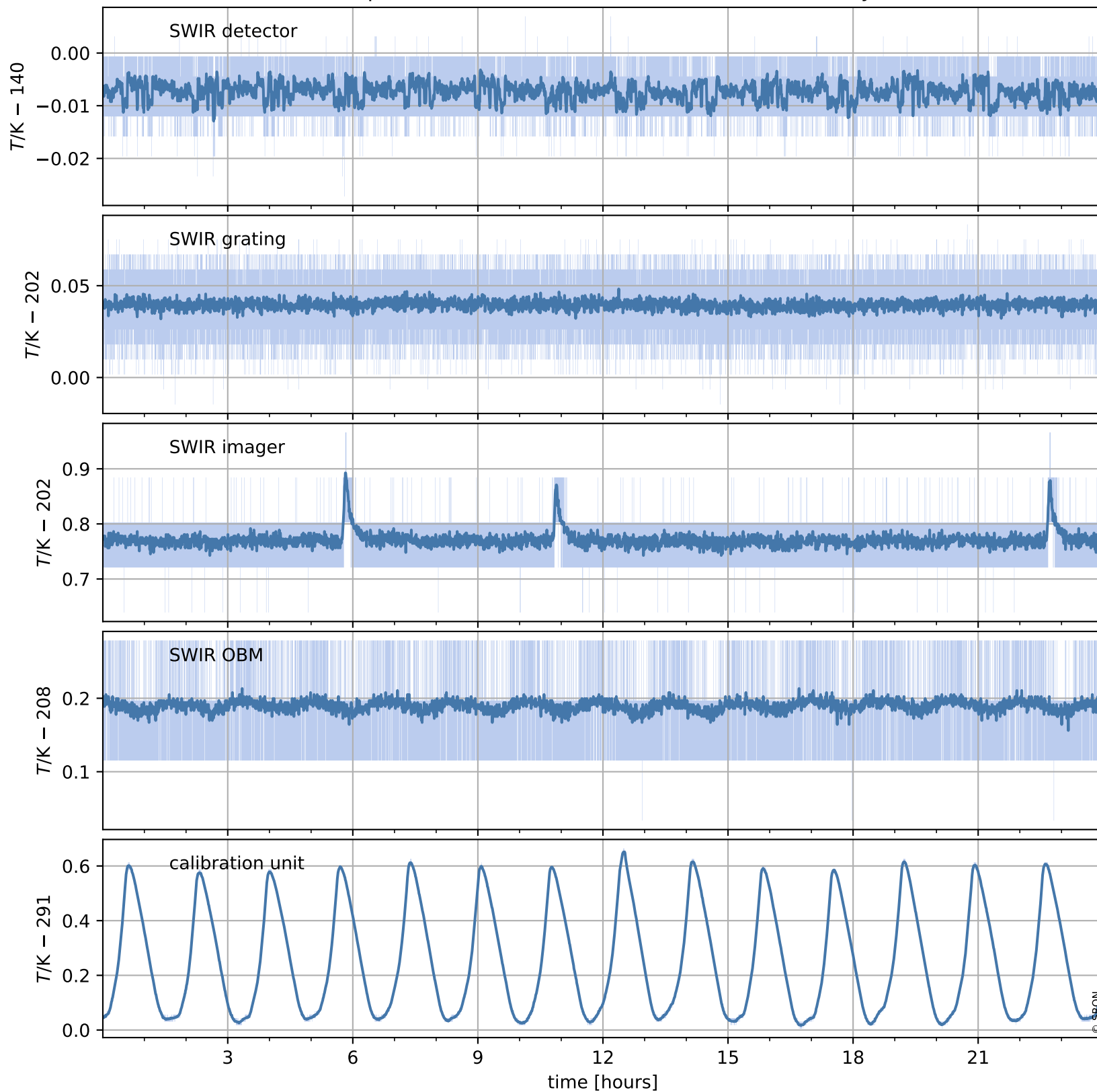


# Tropomi SWIR housekeeping data

orbits : [4535, 4548]  
coverage : 2018-08-29 / 2018-08-30  
created : 2023-08-21T08:34:20

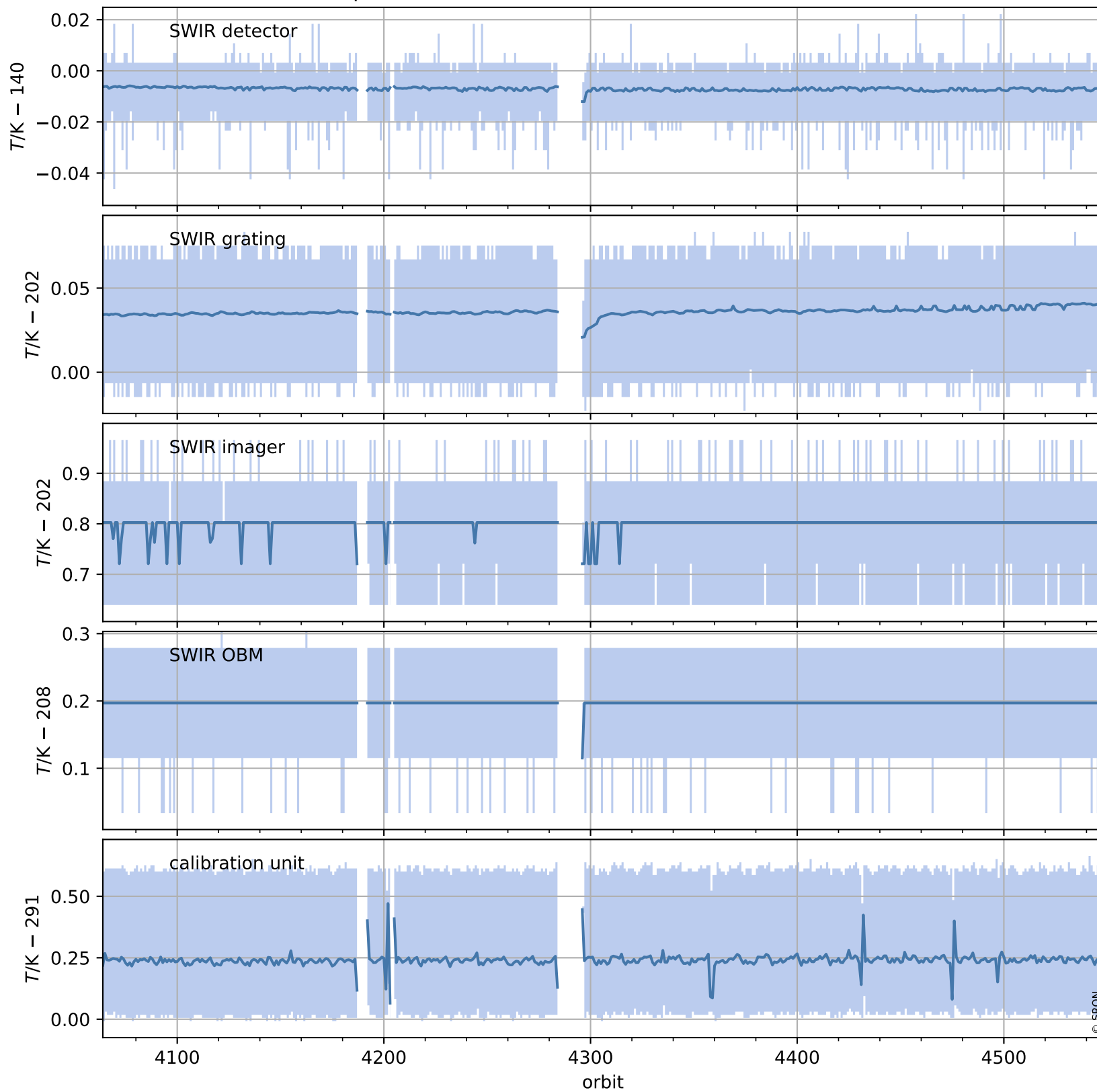
## Temperature of sensors relevant for SWIR (one day)



# Tropomi SWIR housekeeping data

orbits : [4064, 4548]  
coverage : 2018-07-26 / 2018-08-30  
created : 2023-08-21T08:34:21

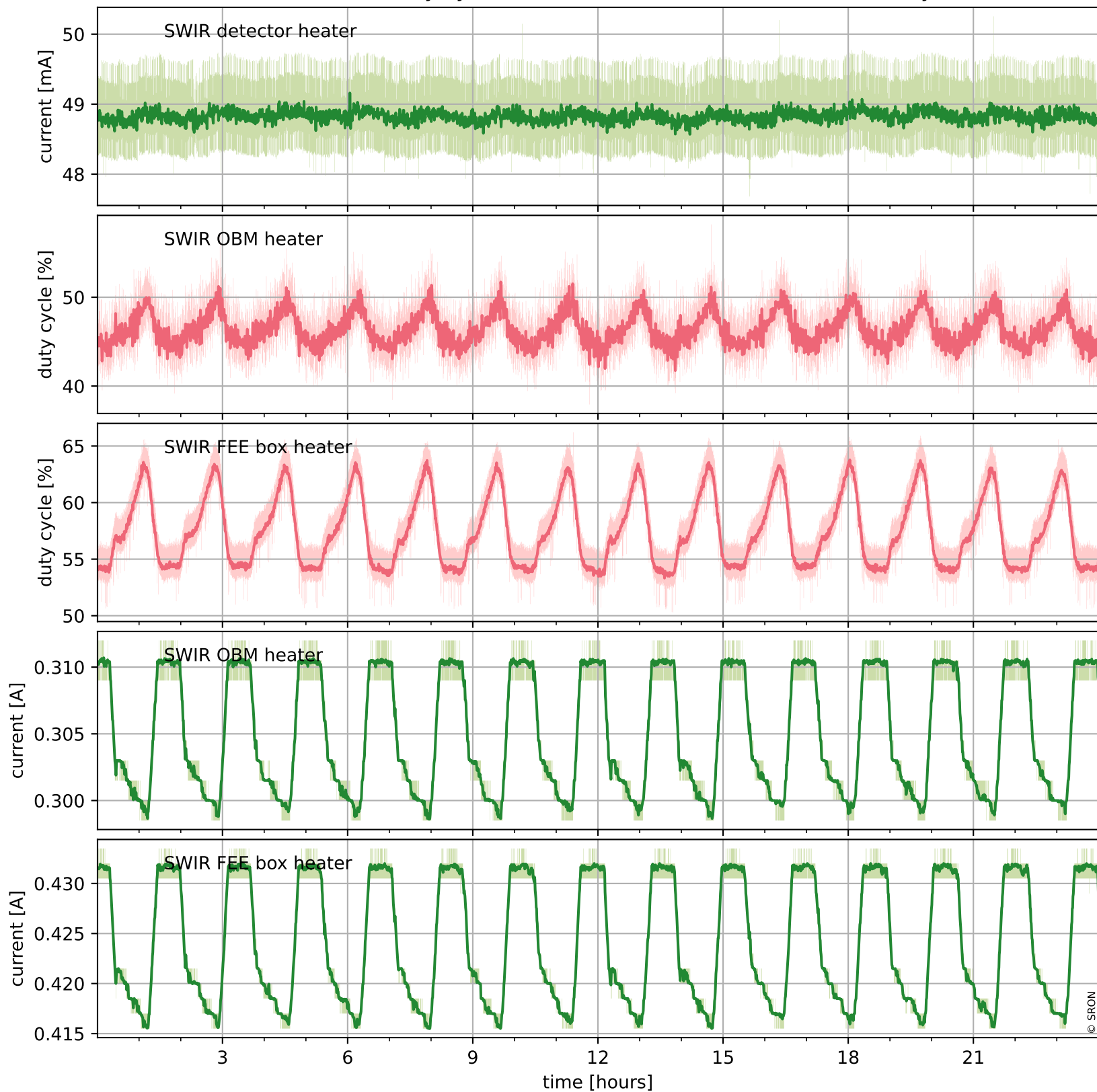
## Temperature of sensors relevant for SWIR (last month)



# Tropomi SWIR housekeeping data

orbits : [4535, 4548]  
coverage : 2018-08-29 / 2018-08-30  
created : 2023-08-21T08:34:21

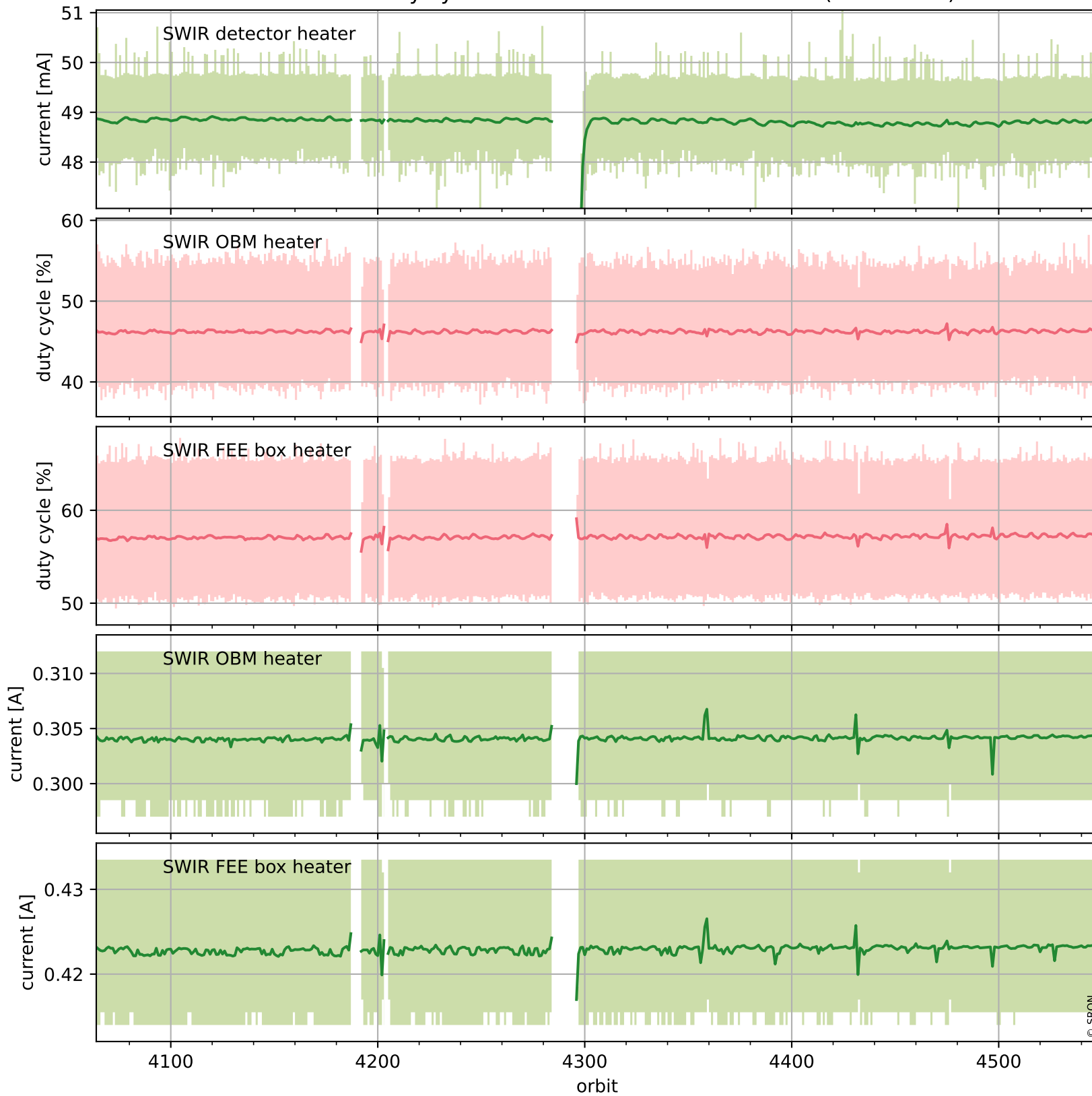
## Current and duty cycle of 3 heaters relevant for SWIR (one day)



# Tropomi SWIR housekeeping data

orbits : [4064, 4548]  
coverage : 2018-07-26 / 2018-08-30  
created : 2023-08-21T08:34:22

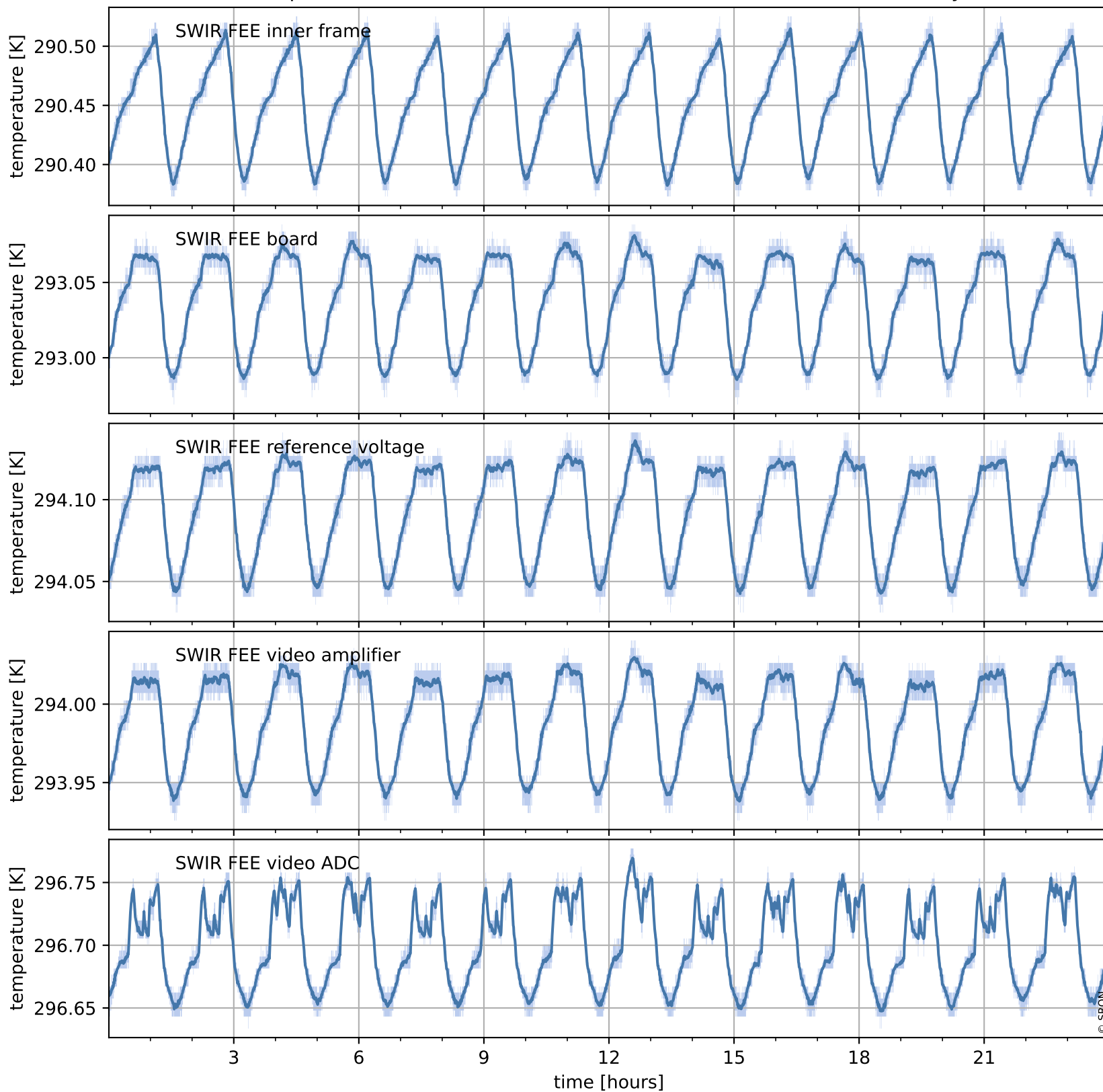
## Current and duty cycle of 3 heaters relevant for SWIR (last month)



# Tropomi SWIR housekeeping data

orbits : [4535, 4548]  
coverage : 2018-08-29 / 2018-08-30  
created : 2023-08-21T08:34:22

## Temperature of sensors at the SWIR front-end electronics (one day)



# Tropomi SWIR housekeeping data

orbits : [4064, 4548]  
coverage : 2018-07-26 / 2018-08-30  
created : 2023-08-21T08:34:22

## Temperature of sensors at the SWIR front-end electronics (last month)

