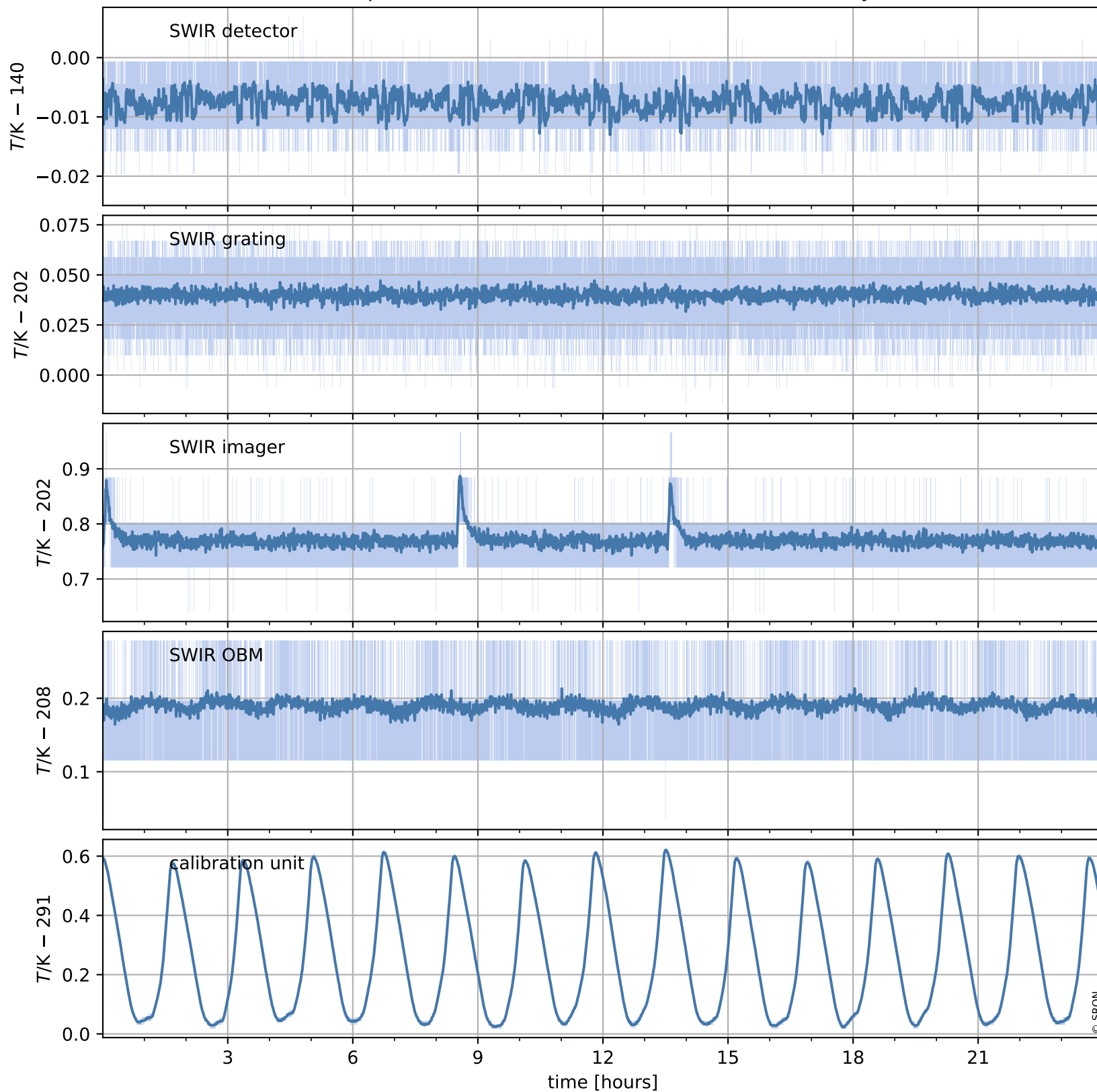


# Tropomi SWIR housekeeping data

orbits : [4563, 4577]  
coverage : 2018-08-31 / 2018-09-01  
created : 2023-08-21T08:34:25

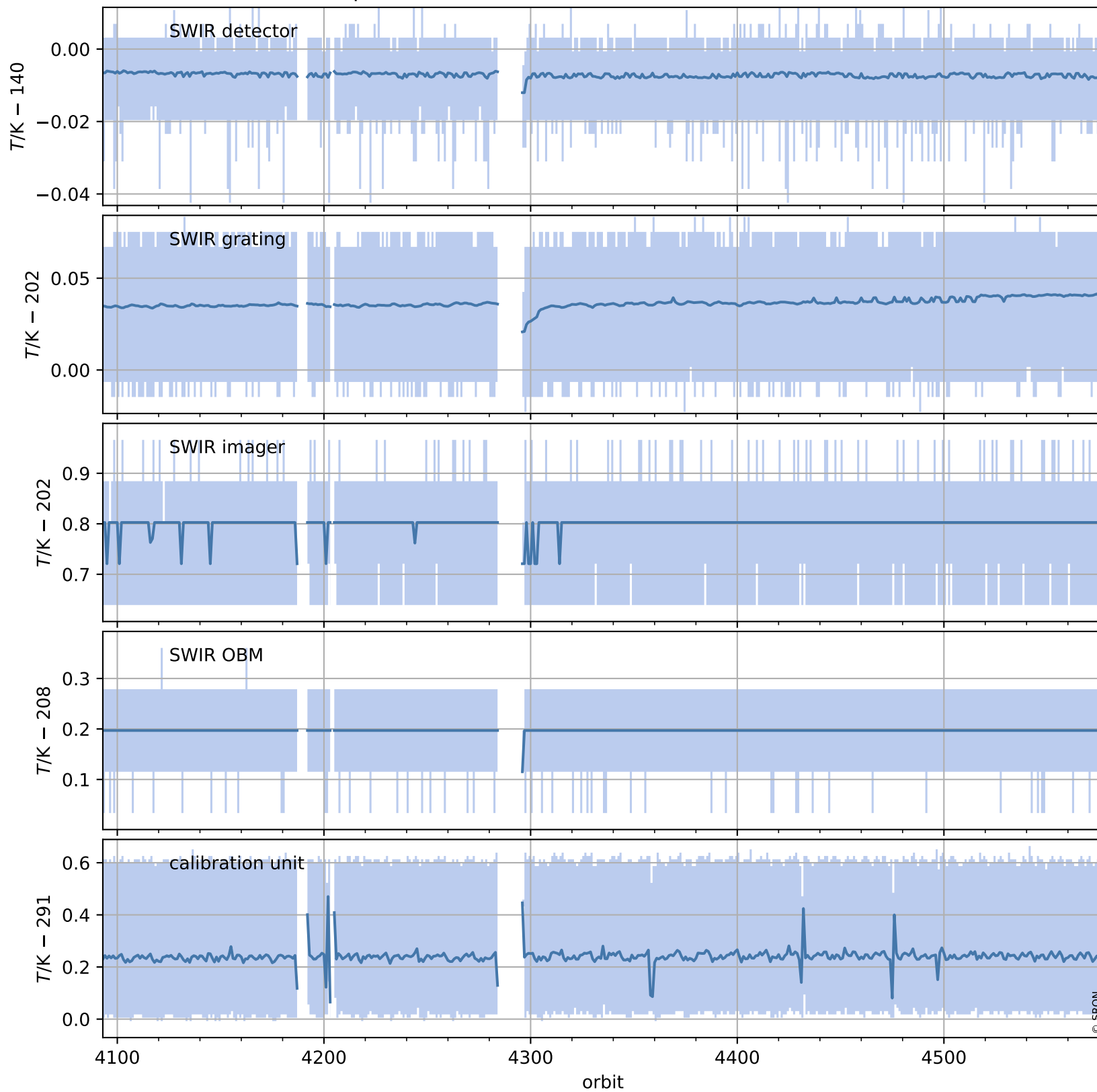
## Temperature of sensors relevant for SWIR (one day)



# Tropomi SWIR housekeeping data

orbits : [4093, 4577]  
coverage : 2018-07-28 / 2018-09-01  
created : 2023-08-21T08:34:26

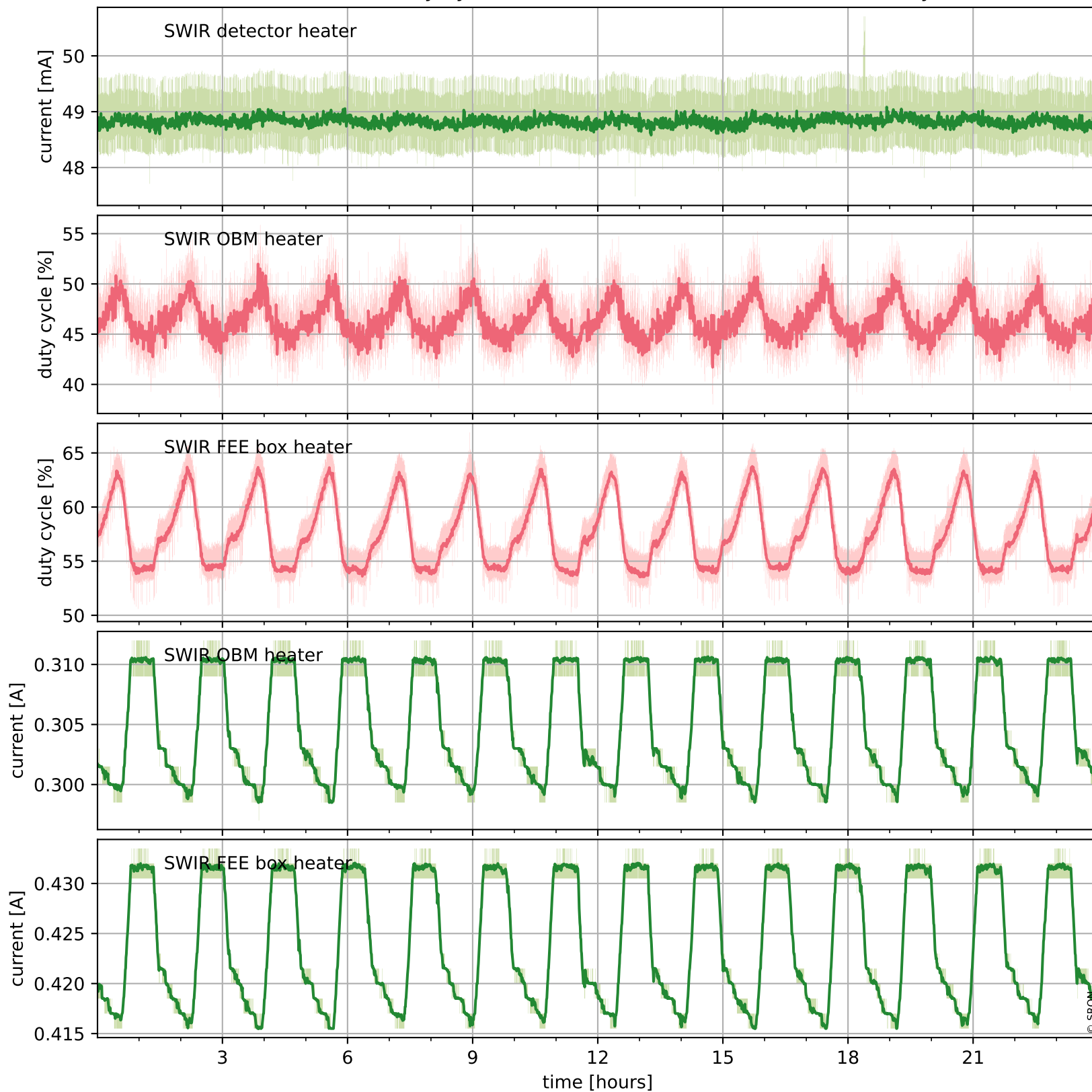
## Temperature of sensors relevant for SWIR (last month)



# Tropomi SWIR housekeeping data

orbits : [4563, 4577]  
coverage : 2018-08-31 / 2018-09-01  
created : 2023-08-21T08:34:26

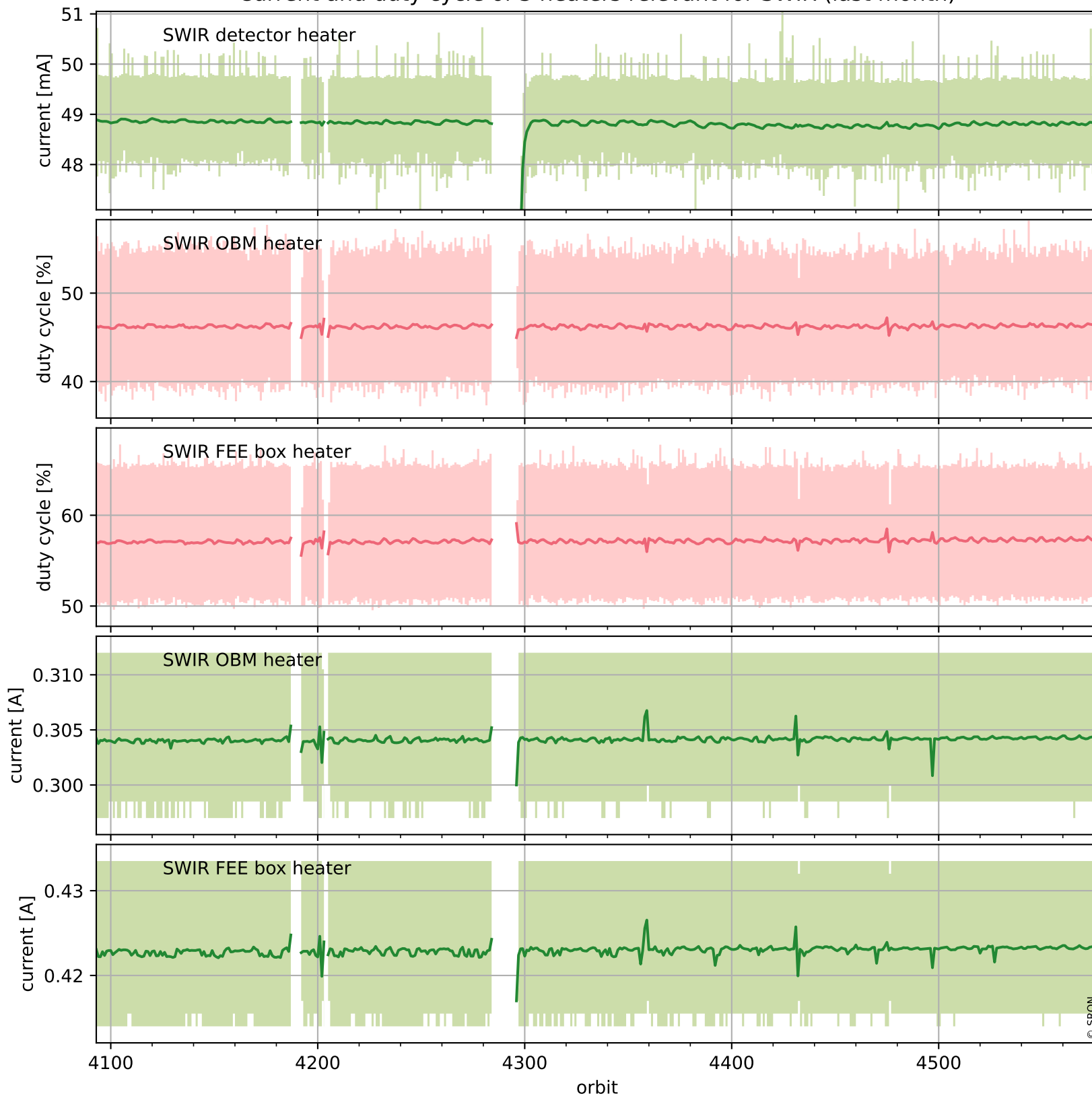
## Current and duty cycle of 3 heaters relevant for SWIR (one day)



# Tropomi SWIR housekeeping data

orbits : [4093, 4577]  
coverage : 2018-07-28 / 2018-09-01  
created : 2023-08-21T08:34:27

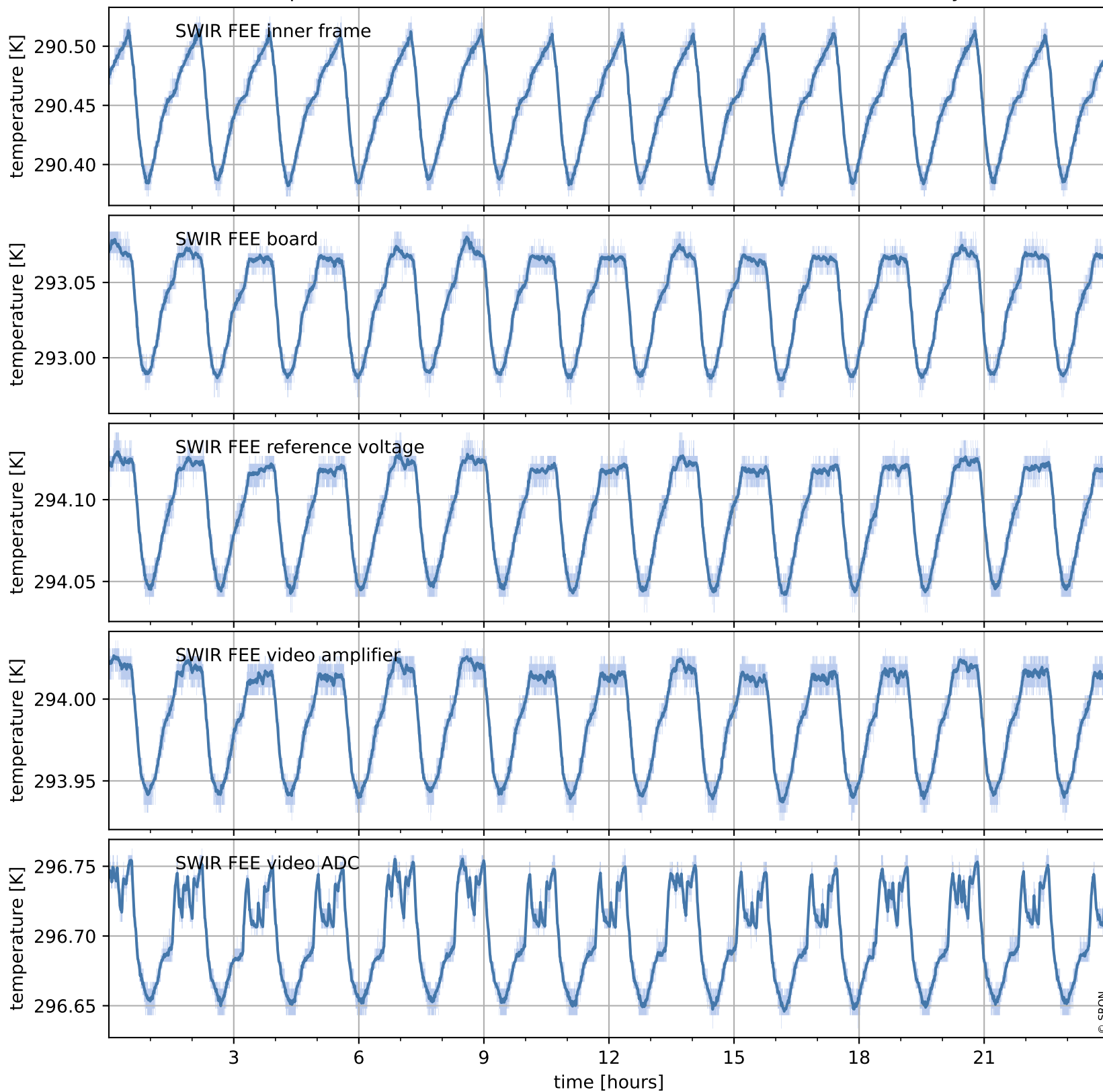
## Current and duty cycle of 3 heaters relevant for SWIR (last month)



# Tropomi SWIR housekeeping data

orbits : [4563, 4577]  
coverage : 2018-08-31 / 2018-09-01  
created : 2023-08-21T08:34:27

## Temperature of sensors at the SWIR front-end electronics (one day)



# Tropomi SWIR housekeeping data

orbits : [4093, 4577]  
coverage : 2018-07-28 / 2018-09-01  
created : 2023-08-21T08:34:27

## Temperature of sensors at the SWIR front-end electronics (last month)

