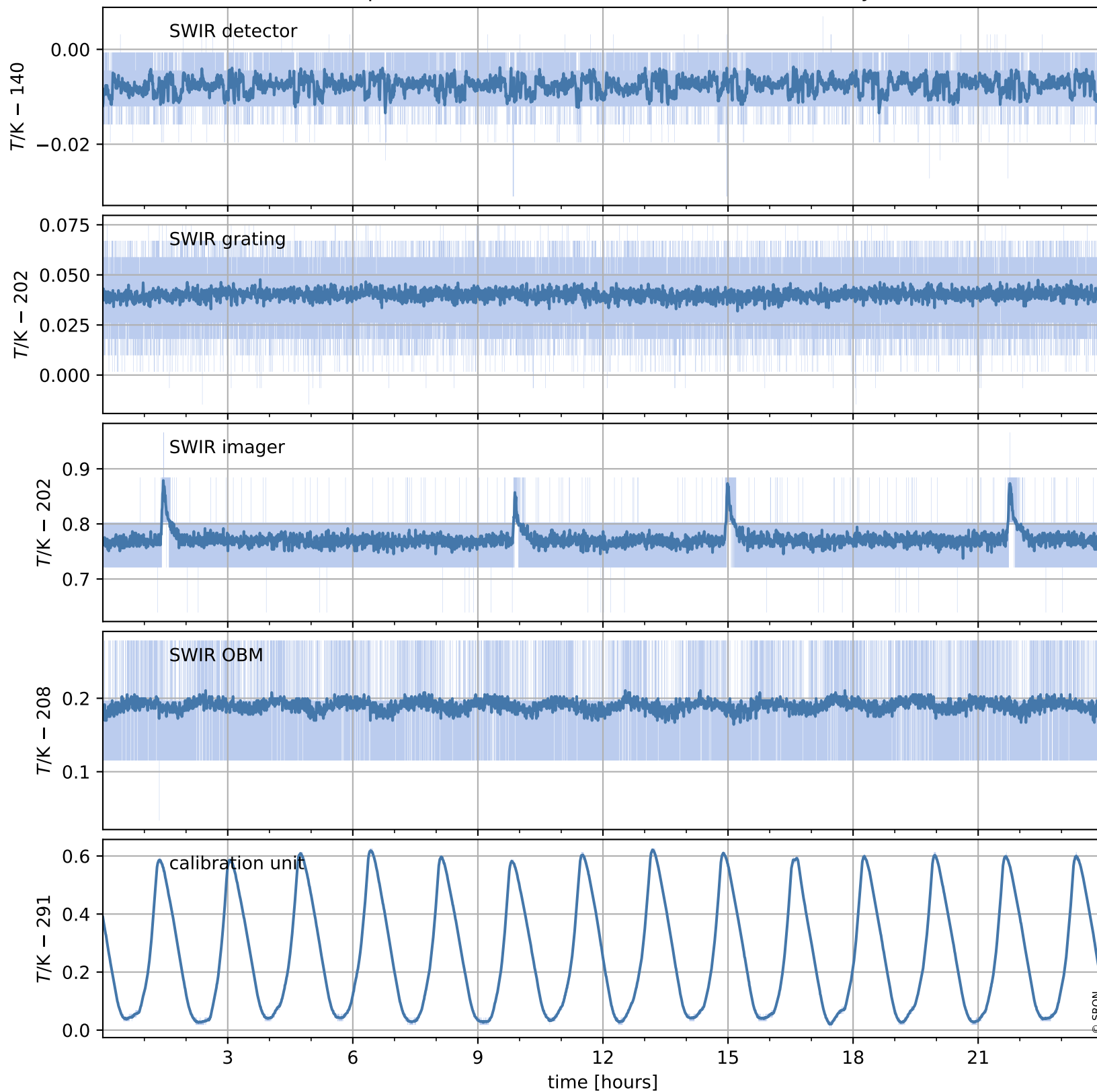


Tropomi SWIR housekeeping data

orbits : [4578, 4591]
coverage : 2018-09-01 / 2018-09-02
created : 2023-08-21T08:34:28

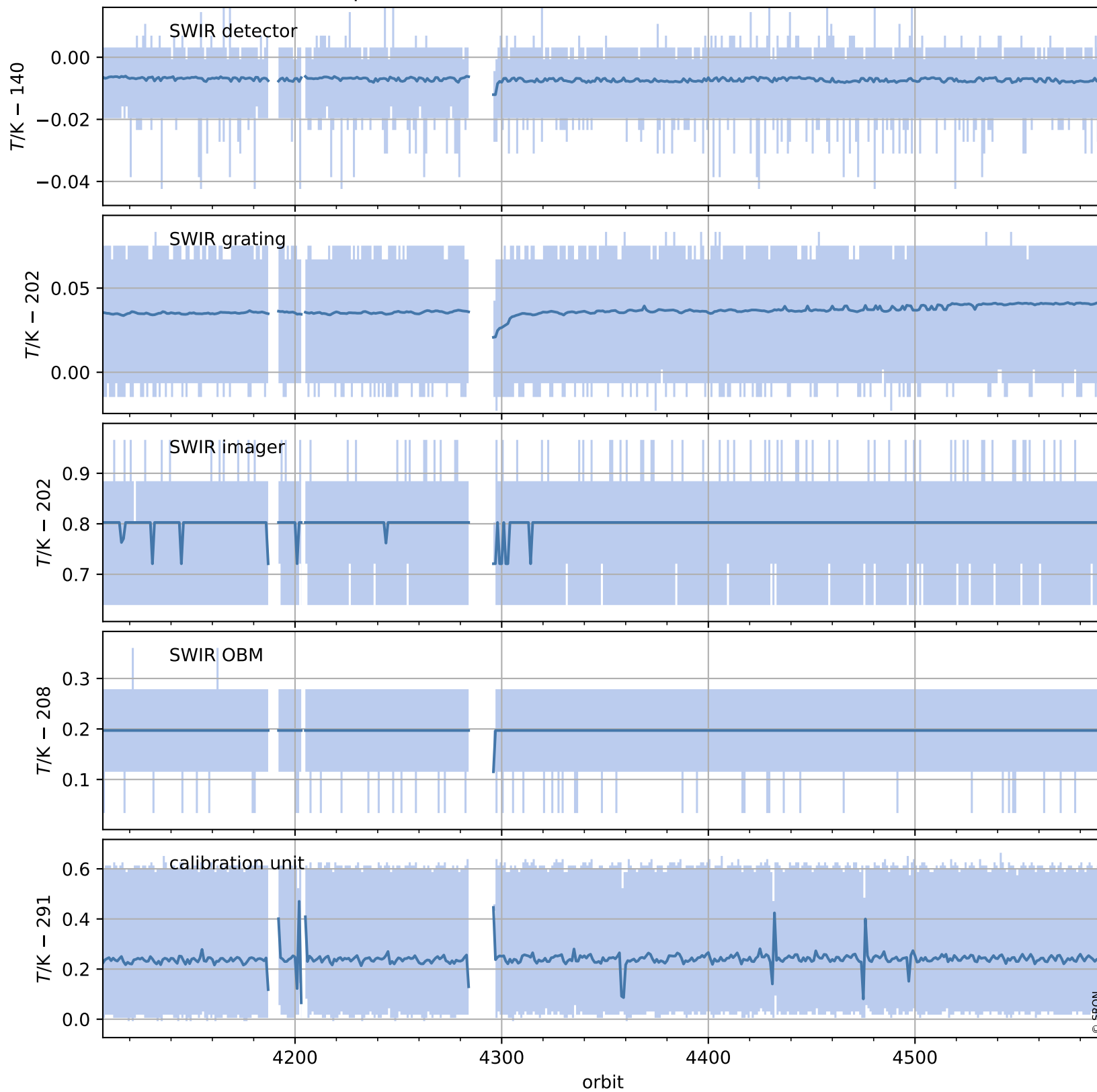
Temperature of sensors relevant for SWIR (one day)



Tropomi SWIR housekeeping data

orbits : [4107, 4591]
coverage : 2018-07-29 / 2018-09-02
created : 2023-08-21T08:34:28

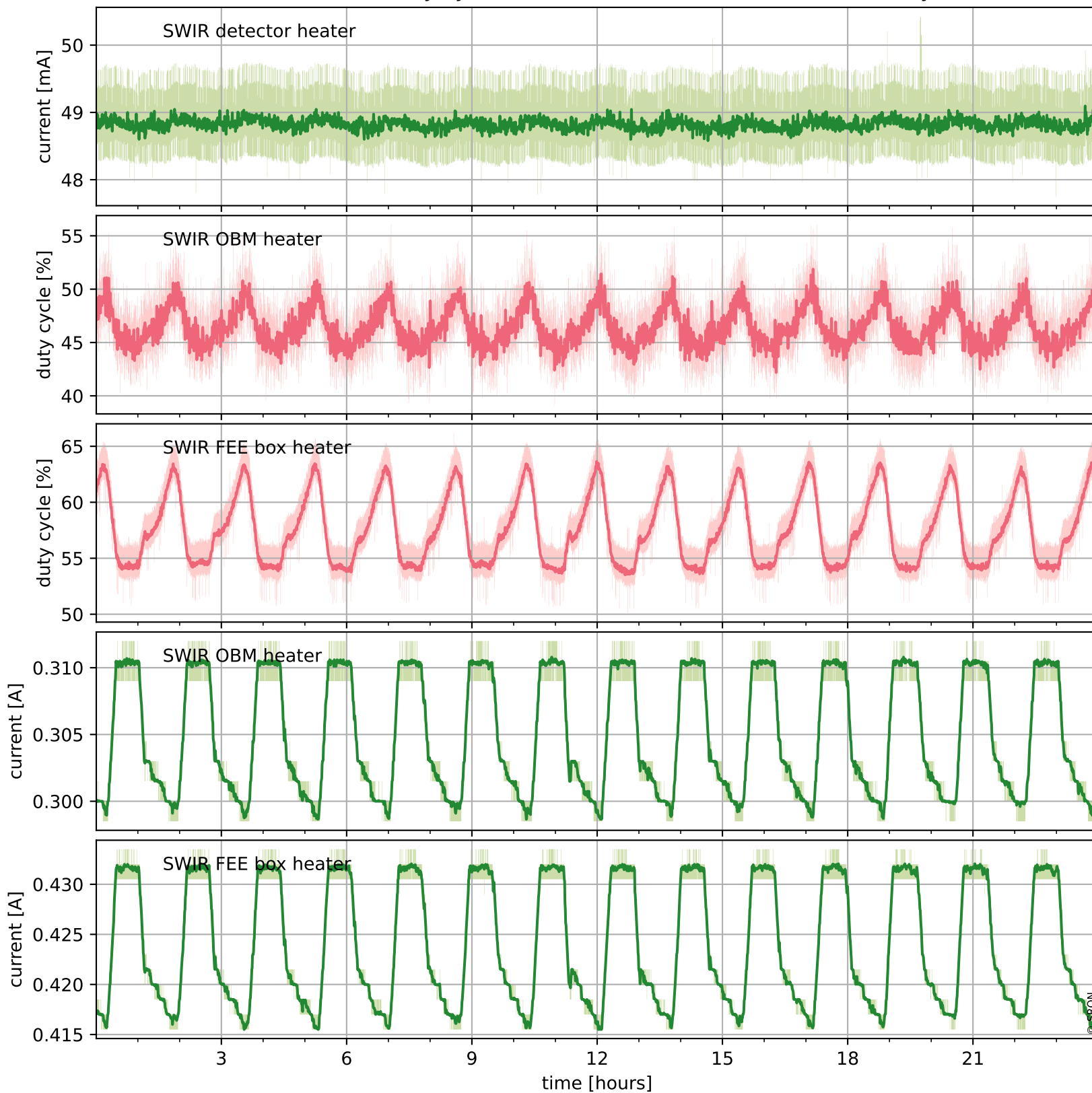
Temperature of sensors relevant for SWIR (last month)



Tropomi SWIR housekeeping data

orbits : [4578, 4591]
coverage : 2018-09-01 / 2018-09-02
created : 2023-08-21T08:34:28

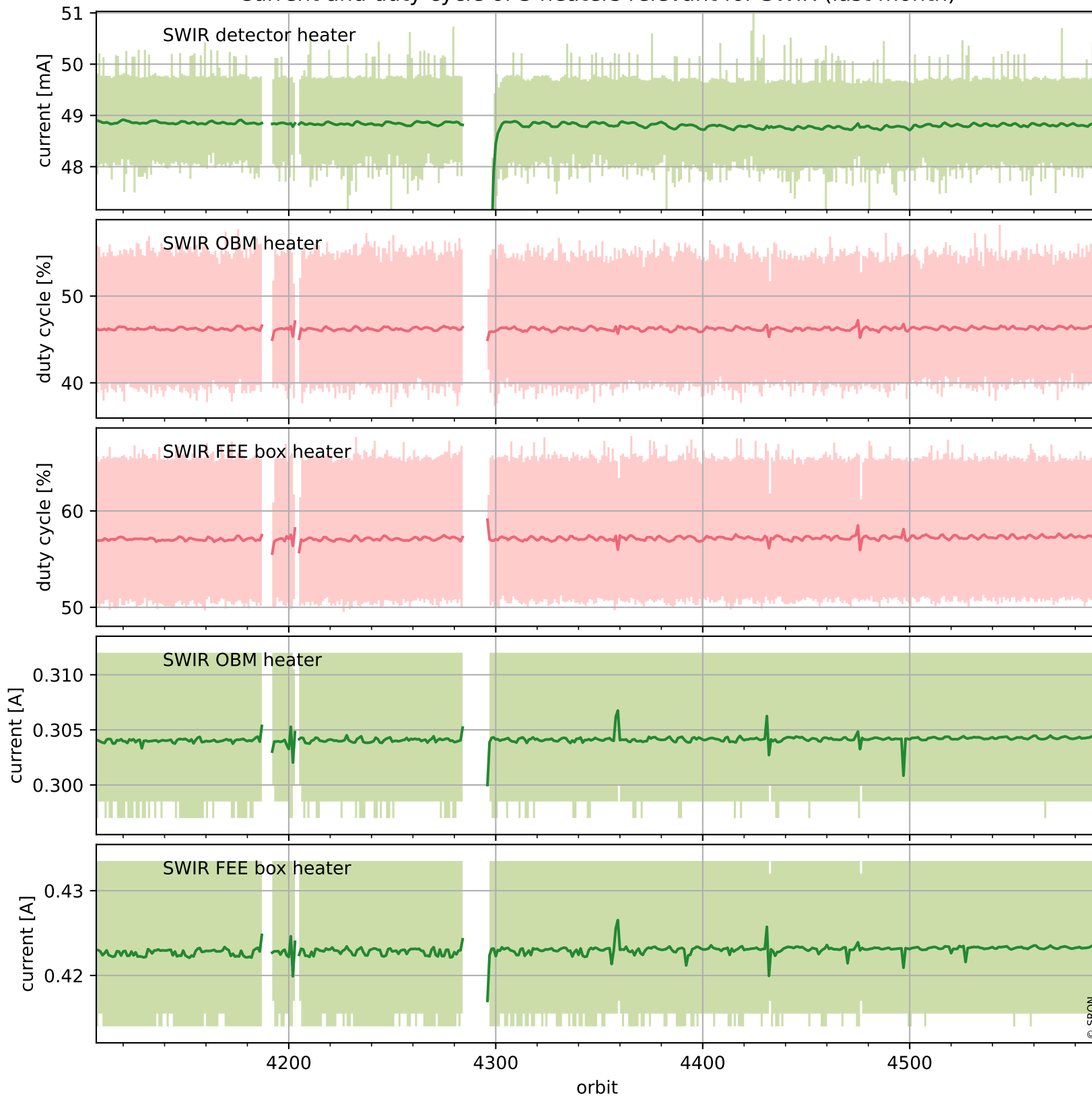
Current and duty cycle of 3 heaters relevant for SWIR (one day)



Tropomi SWIR housekeeping data

orbits : [4107, 4591]
coverage : 2018-07-29 / 2018-09-02
created : 2023-08-21T08:34:29

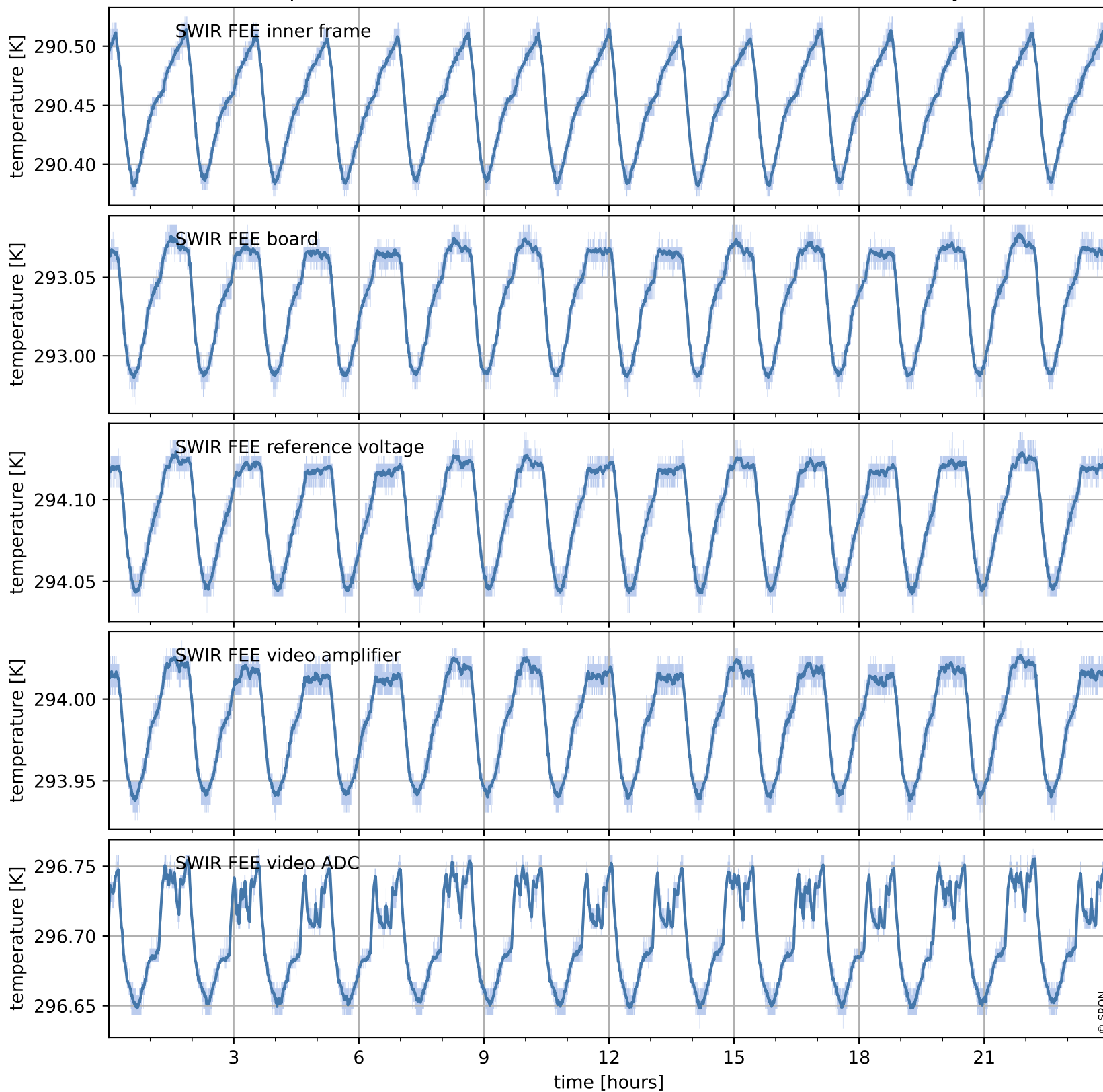
Current and duty cycle of 3 heaters relevant for SWIR (last month)



Tropomi SWIR housekeeping data

orbits : [4578, 4591]
coverage : 2018-09-01 / 2018-09-02
created : 2023-08-21T08:34:29

Temperature of sensors at the SWIR front-end electronics (one day)



Tropomi SWIR housekeeping data

orbits : [4107, 4591]
coverage : 2018-07-29 / 2018-09-02
created : 2023-08-21T08:34:30

Temperature of sensors at the SWIR front-end electronics (last month)

