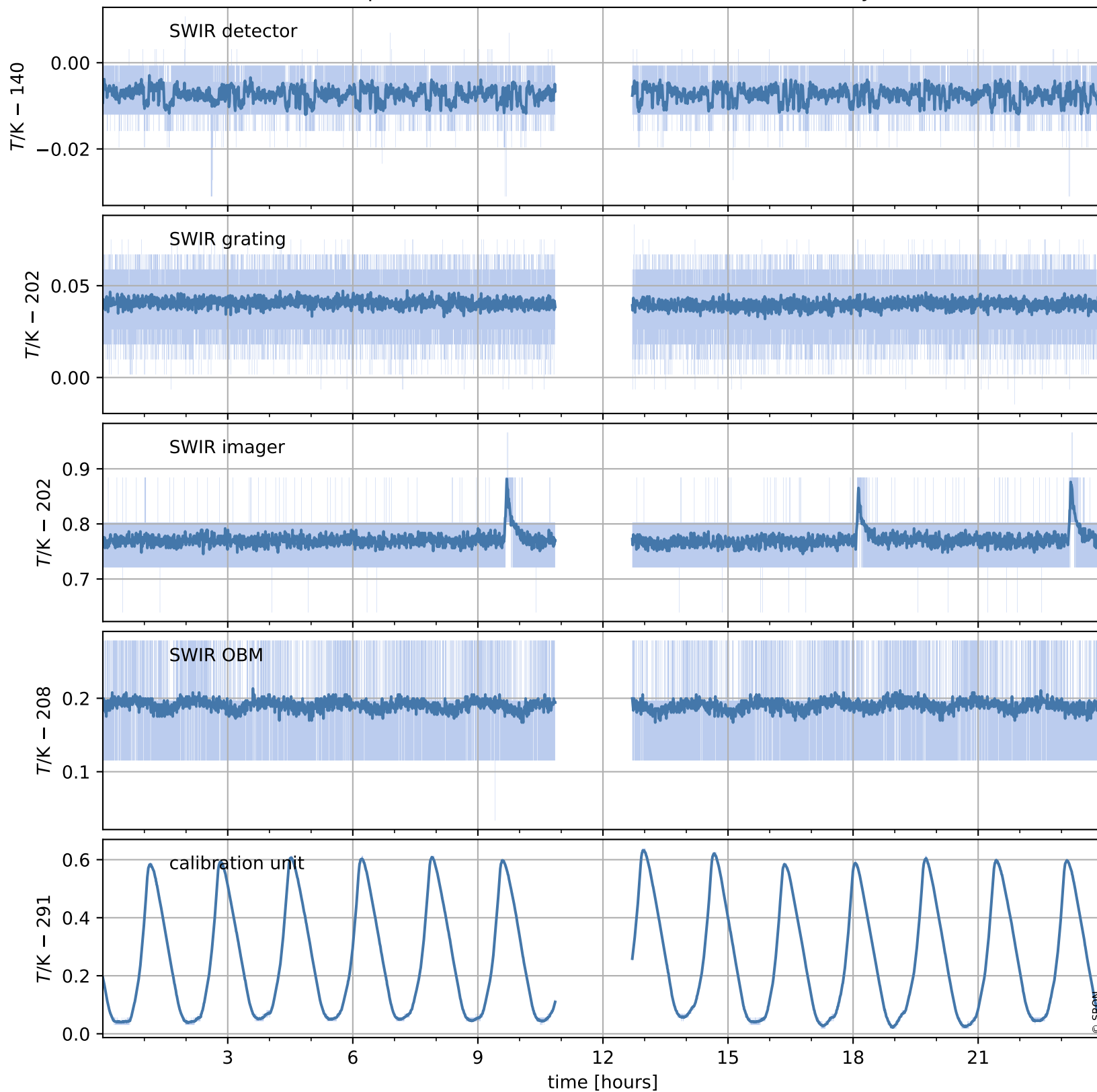


Tropomi SWIR housekeeping data

orbits : [4663, 4676]
coverage : 2018-09-07 / 2018-09-08
created : 2023-08-21T08:34:42

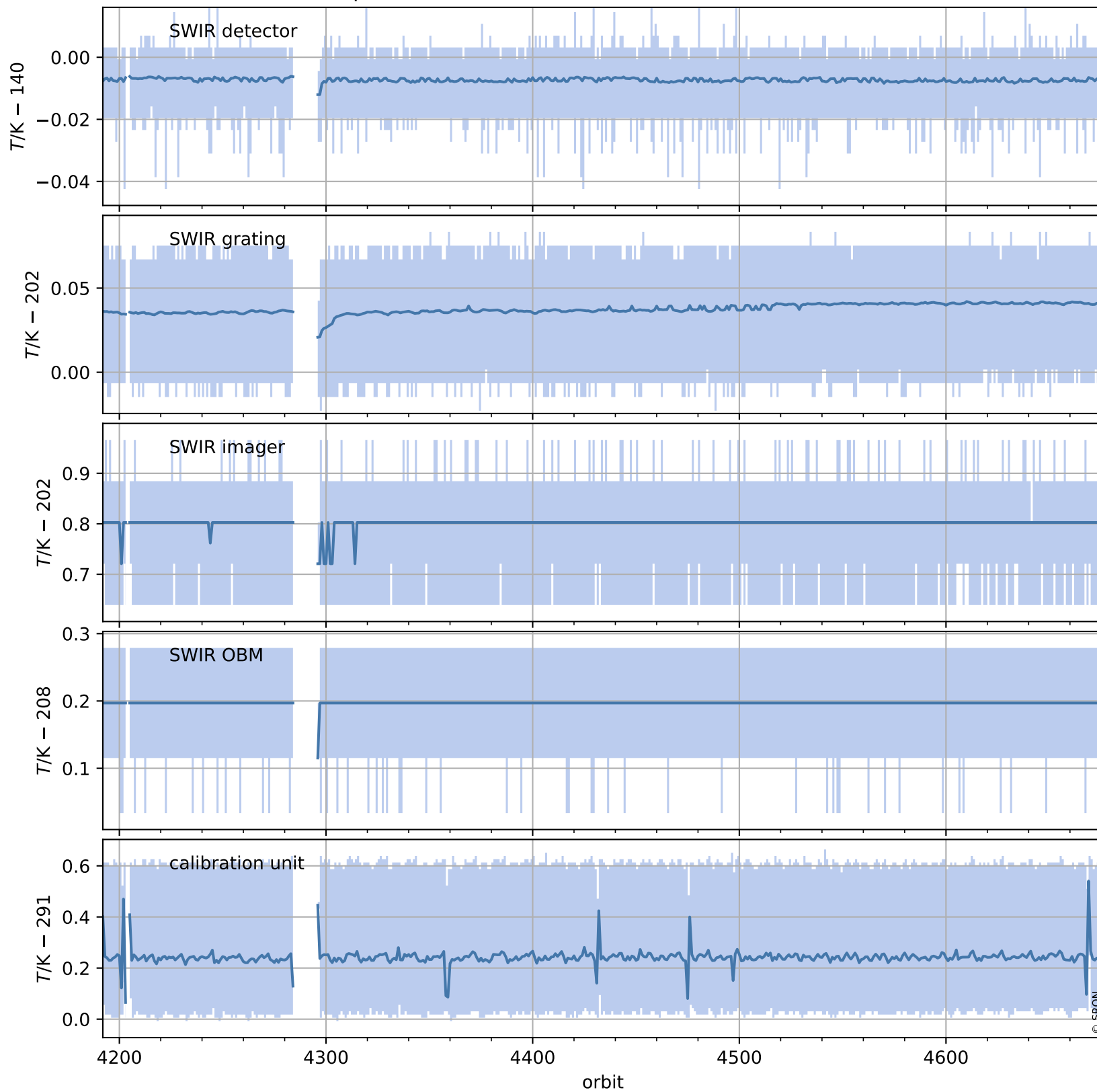
Temperature of sensors relevant for SWIR (one day)



Tropomi SWIR housekeeping data

orbits : [4192, 4676]
coverage : 2018-08-04 / 2018-09-08
created : 2023-08-21T08:34:43

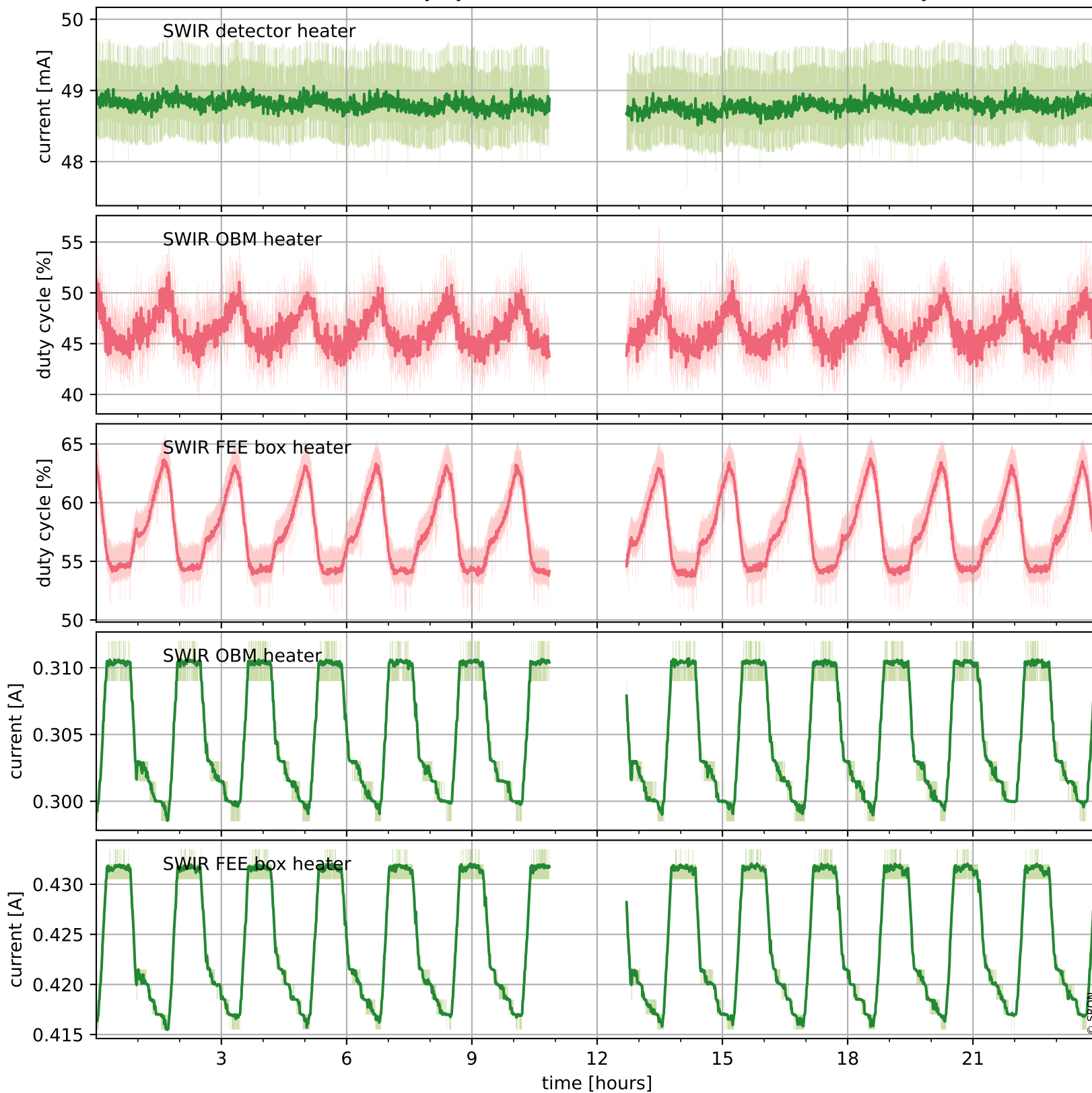
Temperature of sensors relevant for SWIR (last month)



Tropomi SWIR housekeeping data

orbits : [4663, 4676]
coverage : 2018-09-07 / 2018-09-08
created : 2023-08-21T08:34:43

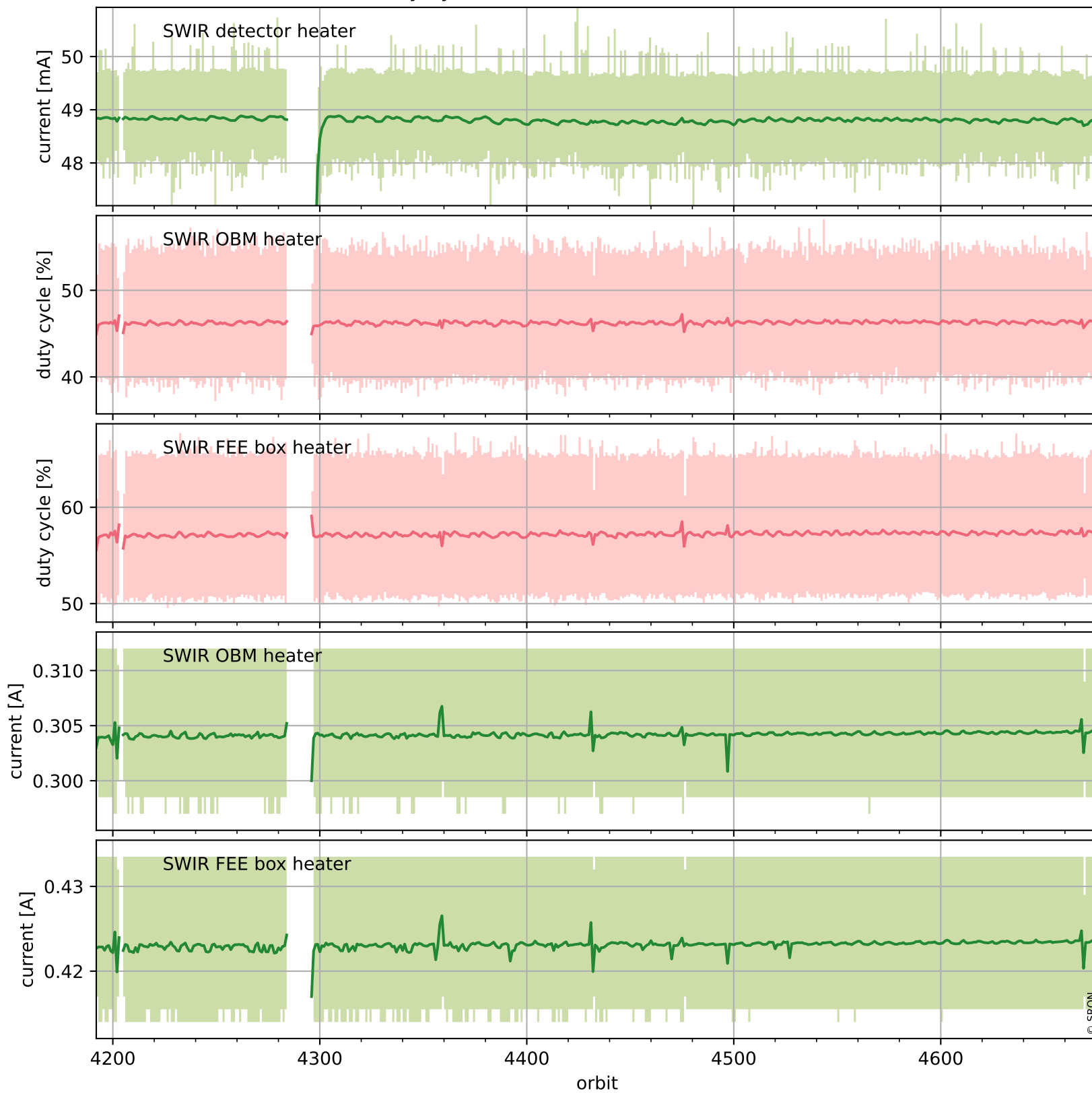
Current and duty cycle of 3 heaters relevant for SWIR (one day)



Tropomi SWIR housekeeping data

orbits : [4192, 4676]
coverage : 2018-08-04 / 2018-09-08
created : 2023-08-21T08:34:43

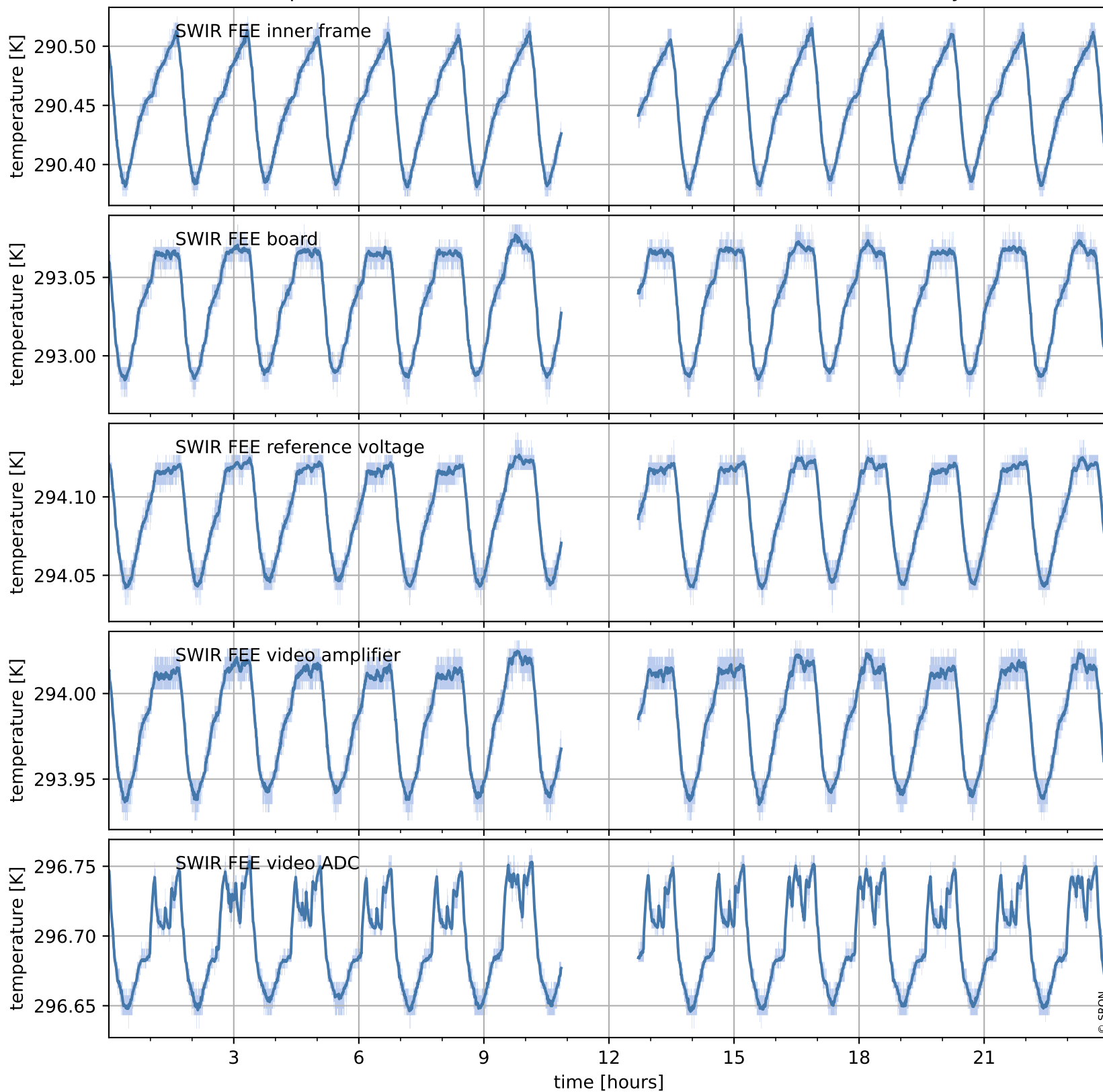
Current and duty cycle of 3 heaters relevant for SWIR (last month)



Tropomi SWIR housekeeping data

orbits : [4663, 4676]
coverage : 2018-09-07 / 2018-09-08
created : 2023-08-21T08:34:44

Temperature of sensors at the SWIR front-end electronics (one day)



Tropomi SWIR housekeeping data

orbits : [4192, 4676]
coverage : 2018-08-04 / 2018-09-08
created : 2023-08-21T08:34:44

Temperature of sensors at the SWIR front-end electronics (last month)

