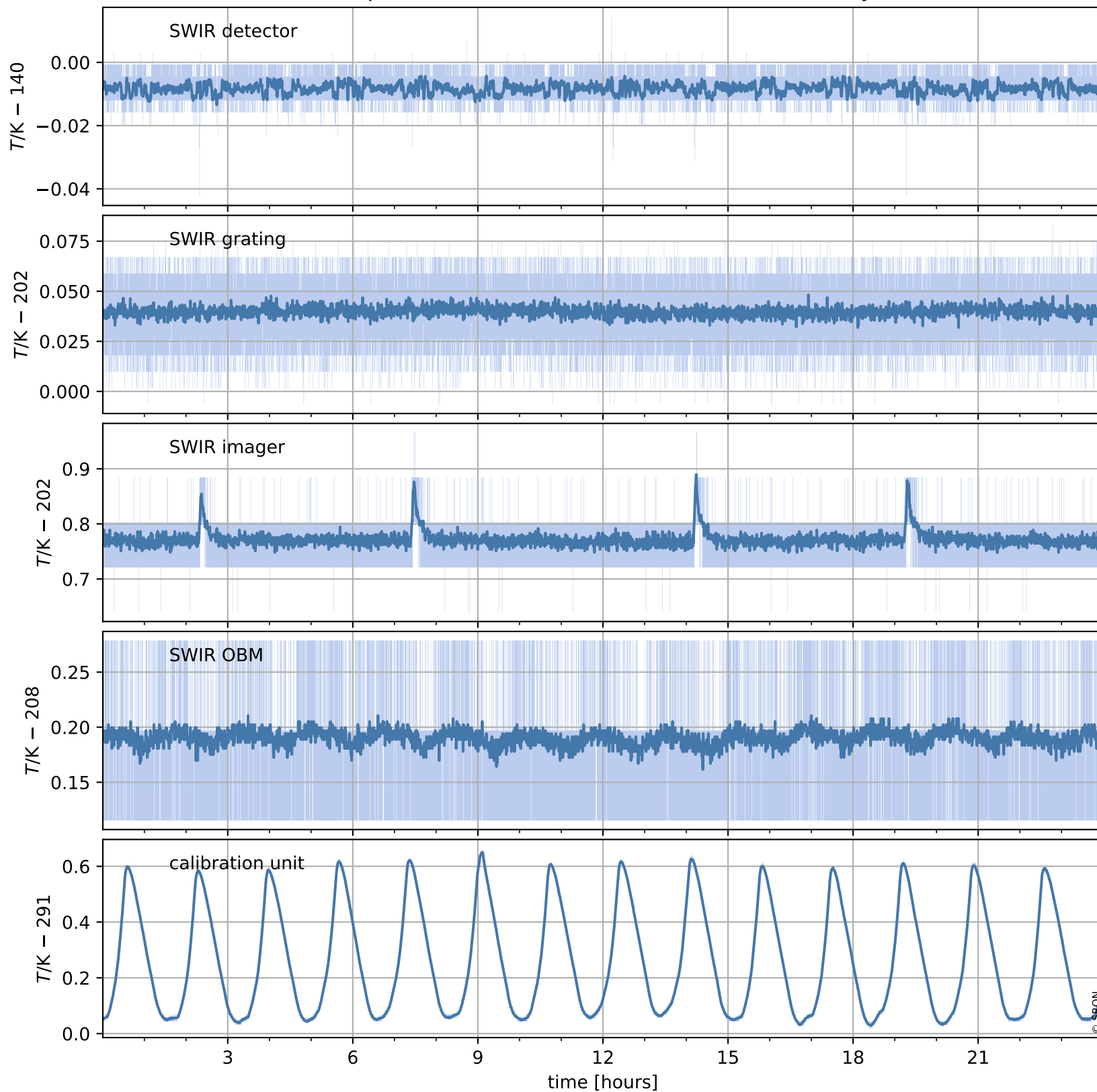


# Tropomi SWIR housekeeping data

orbits : [4762, 4775]  
coverage : 2018-09-14 / 2018-09-15  
created : 2023-08-21T08:34:59

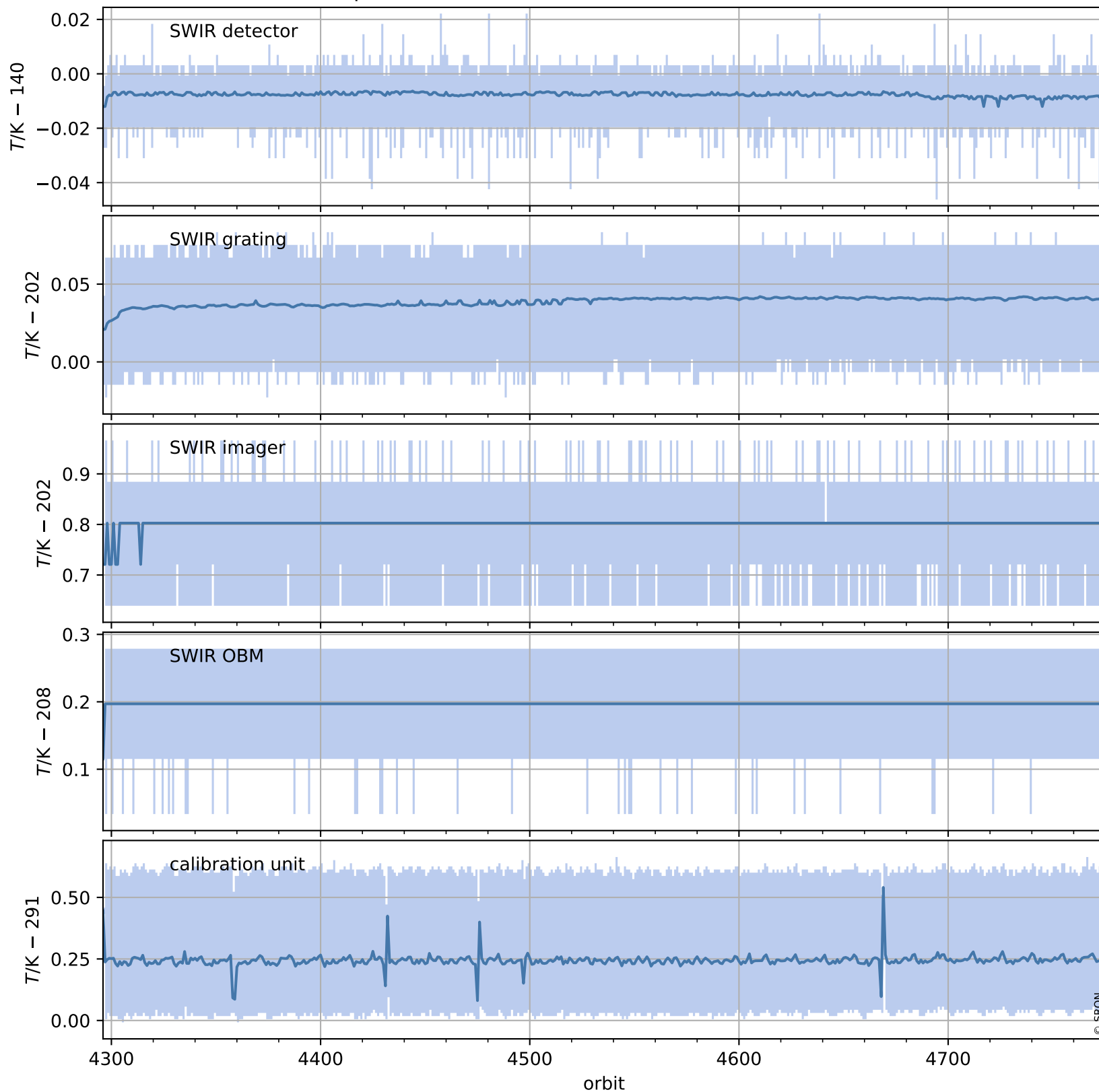
## Temperature of sensors relevant for SWIR (one day)



# Tropomi SWIR housekeeping data

orbits : [4291, 4775]  
coverage : 2018-08-12 / 2018-09-15  
created : 2023-08-21T08:34:59

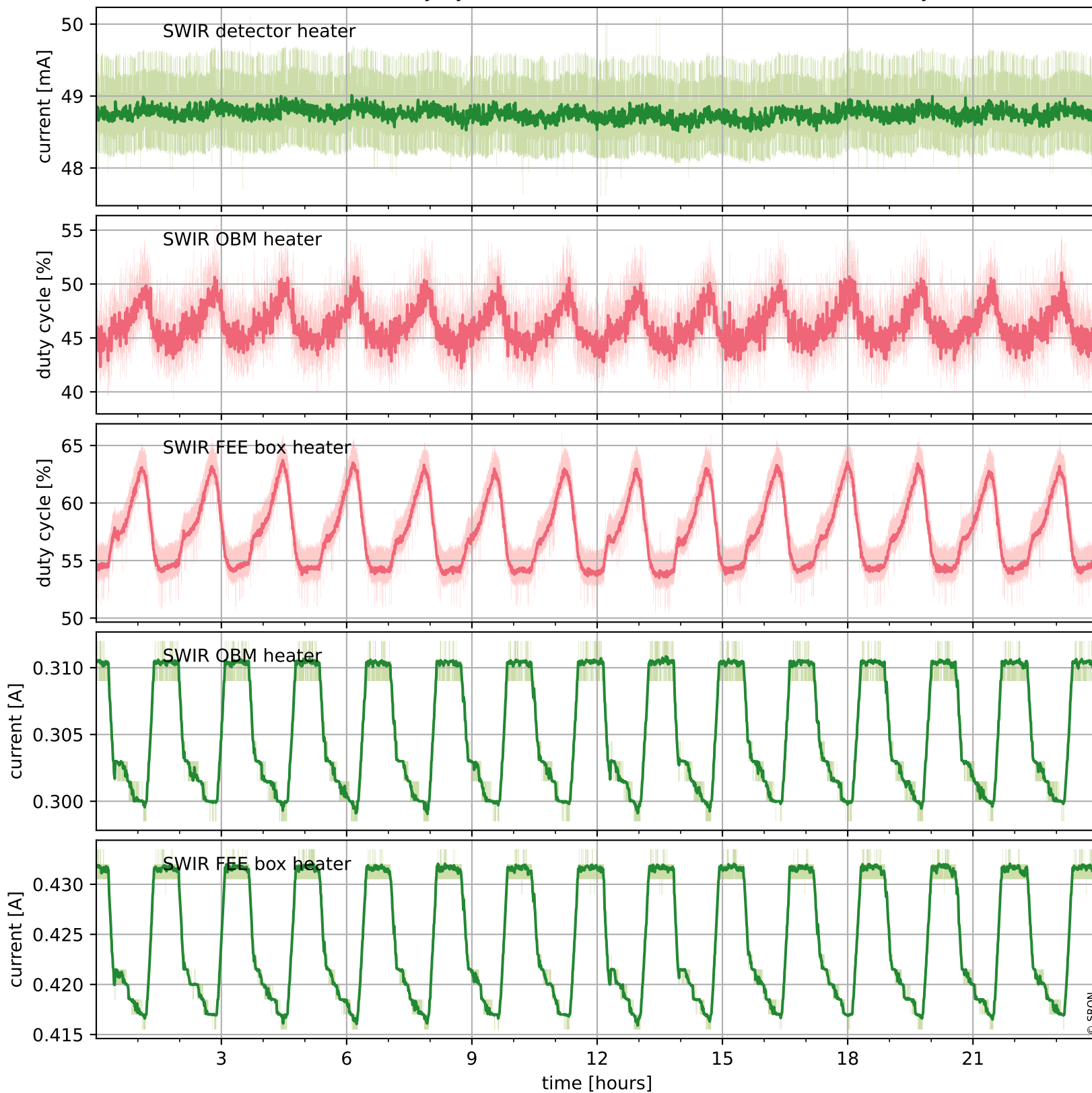
## Temperature of sensors relevant for SWIR (last month)



# Tropomi SWIR housekeeping data

orbits : [4762, 4775]  
coverage : 2018-09-14 / 2018-09-15  
created : 2023-08-21T08:34:59

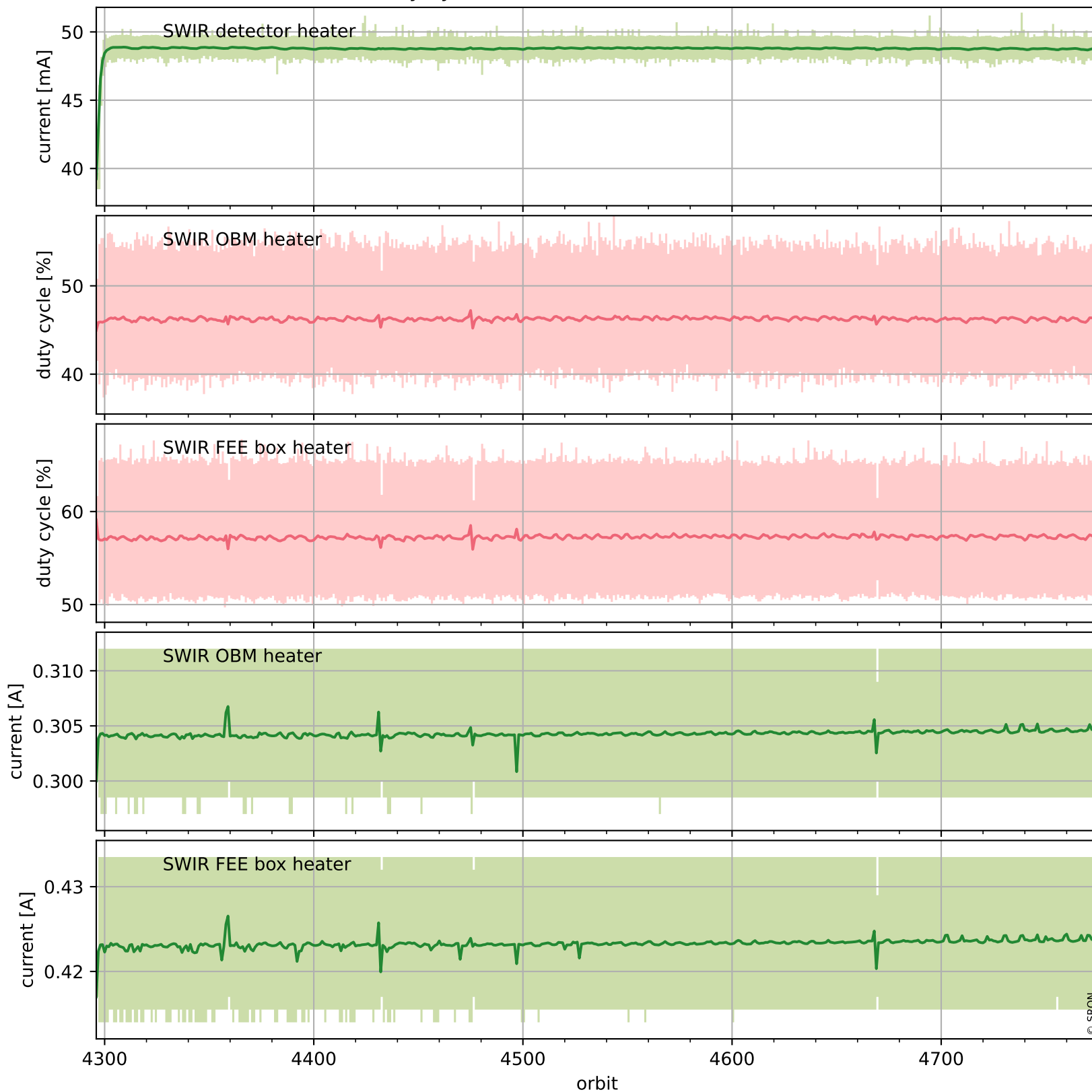
## Current and duty cycle of 3 heaters relevant for SWIR (one day)



# Tropomi SWIR housekeeping data

orbits : [4291, 4775]  
coverage : 2018-08-12 / 2018-09-15  
created : 2023-08-21T08:35:00

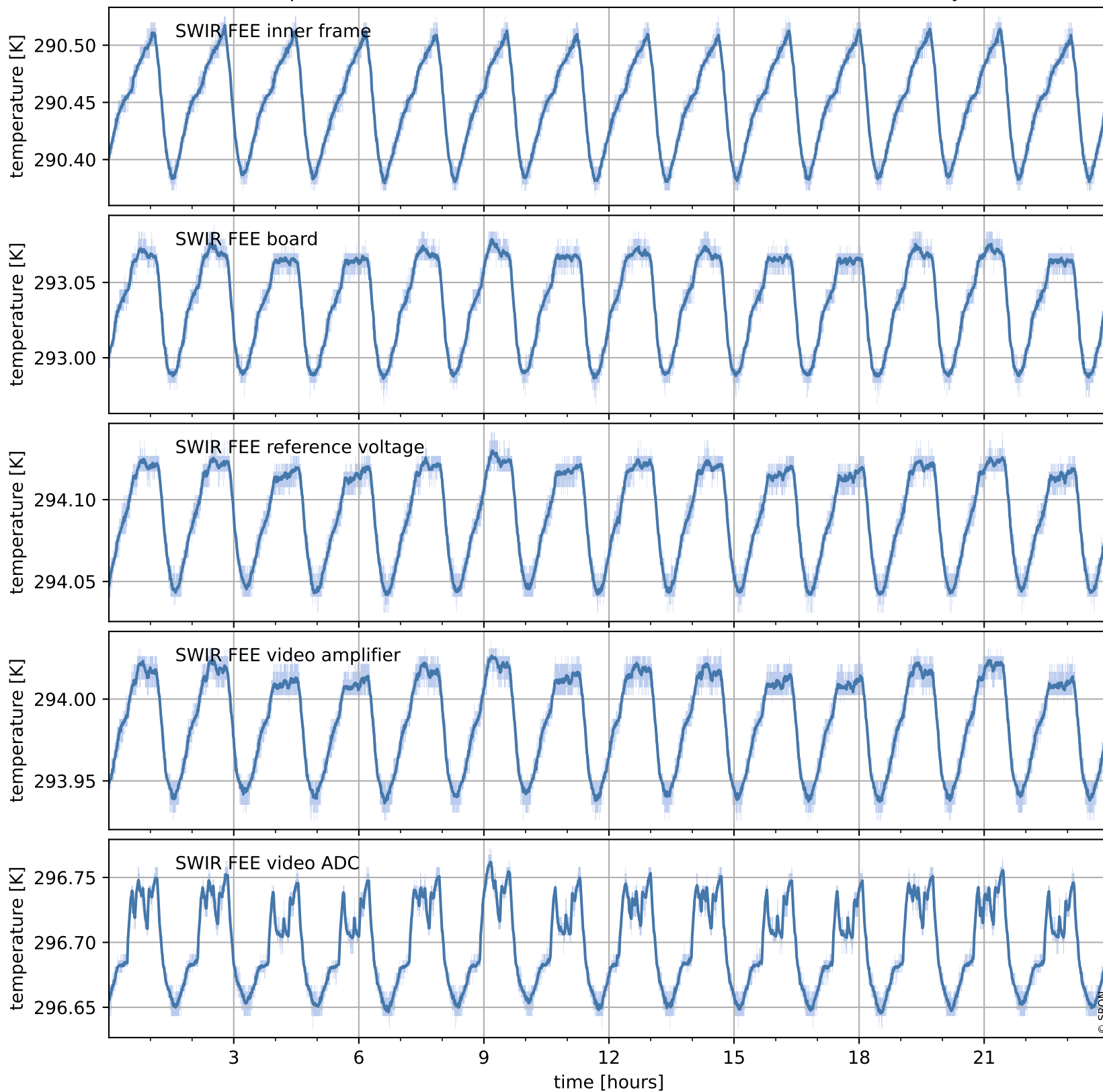
## Current and duty cycle of 3 heaters relevant for SWIR (last month)



# Tropomi SWIR housekeeping data

orbits : [4762, 4775]  
coverage : 2018-09-14 / 2018-09-15  
created : 2023-08-21T08:35:00

## Temperature of sensors at the SWIR front-end electronics (one day)



# Tropomi SWIR housekeeping data

orbits : [4291, 4775]  
coverage : 2018-08-12 / 2018-09-15  
created : 2023-08-21T08:35:00

## Temperature of sensors at the SWIR front-end electronics (last month)

