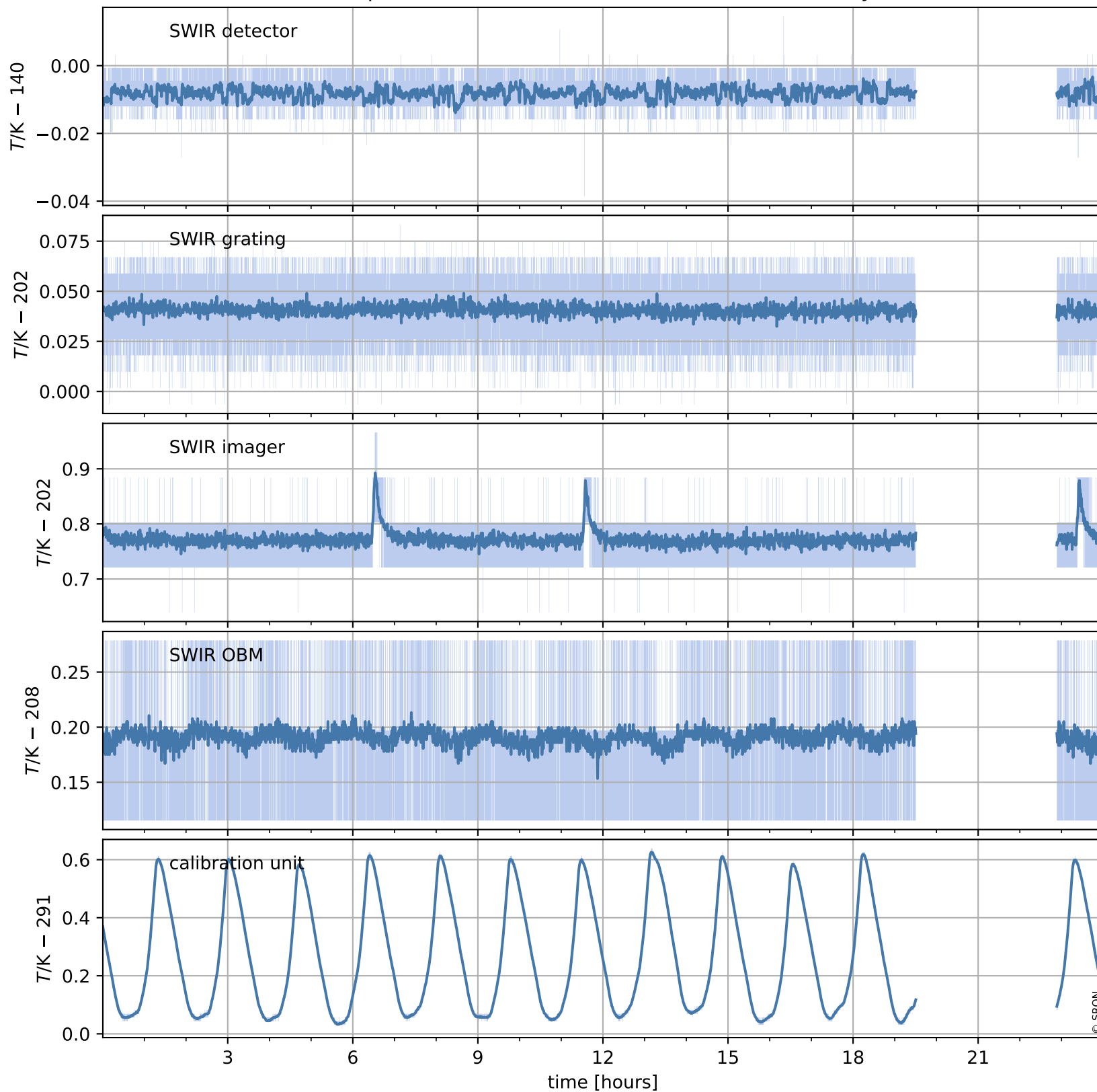


# Tropomi SWIR housekeeping data

orbits : [4805, 4818]  
coverage : 2018-09-17 / 2018-09-18  
created : 2023-08-21T08:35:06

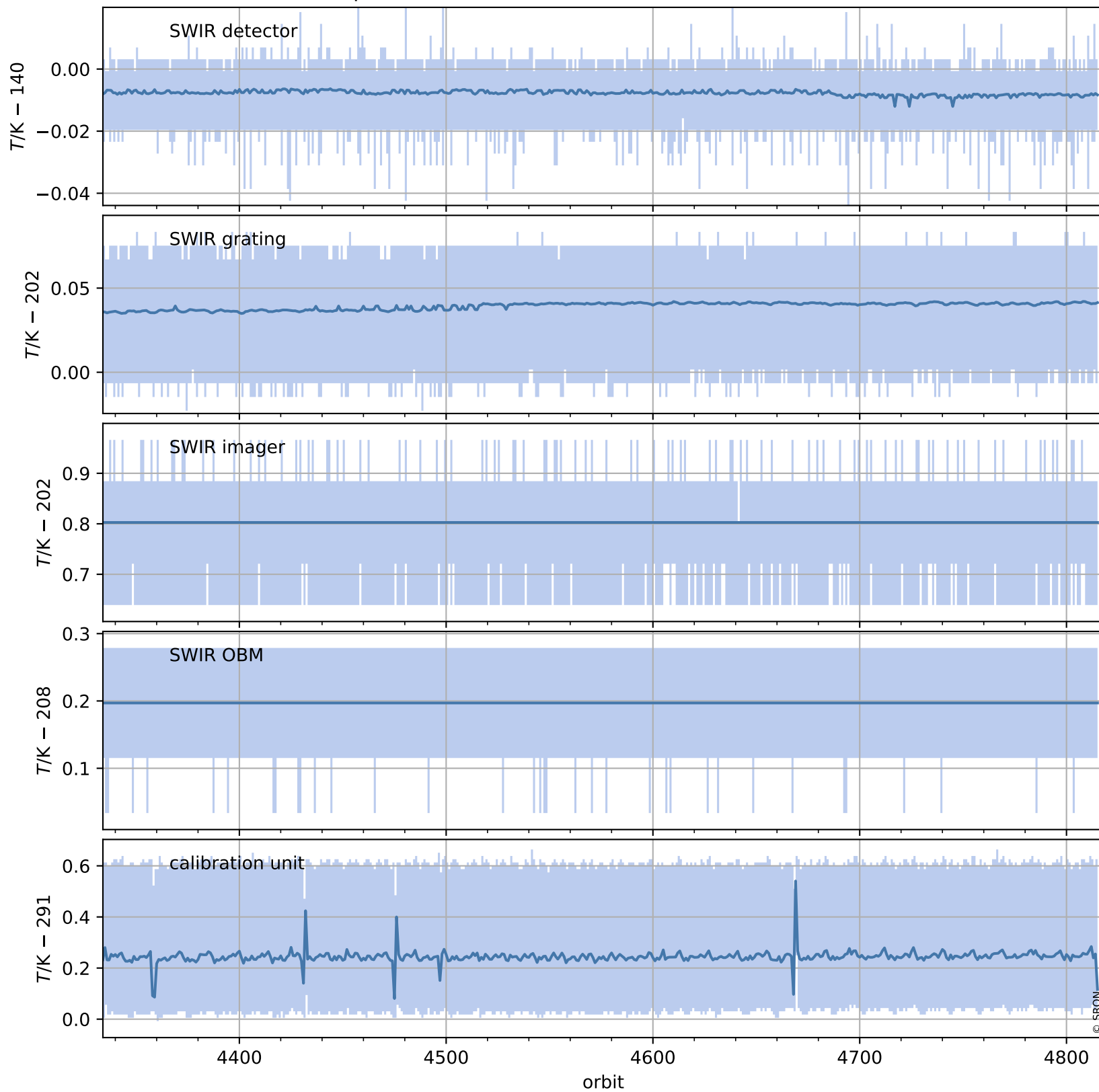
## Temperature of sensors relevant for SWIR (one day)



# Tropomi SWIR housekeeping data

orbits : [4334, 4818]  
coverage : 2018-08-14 / 2018-09-18  
created : 2023-08-21T08:35:06

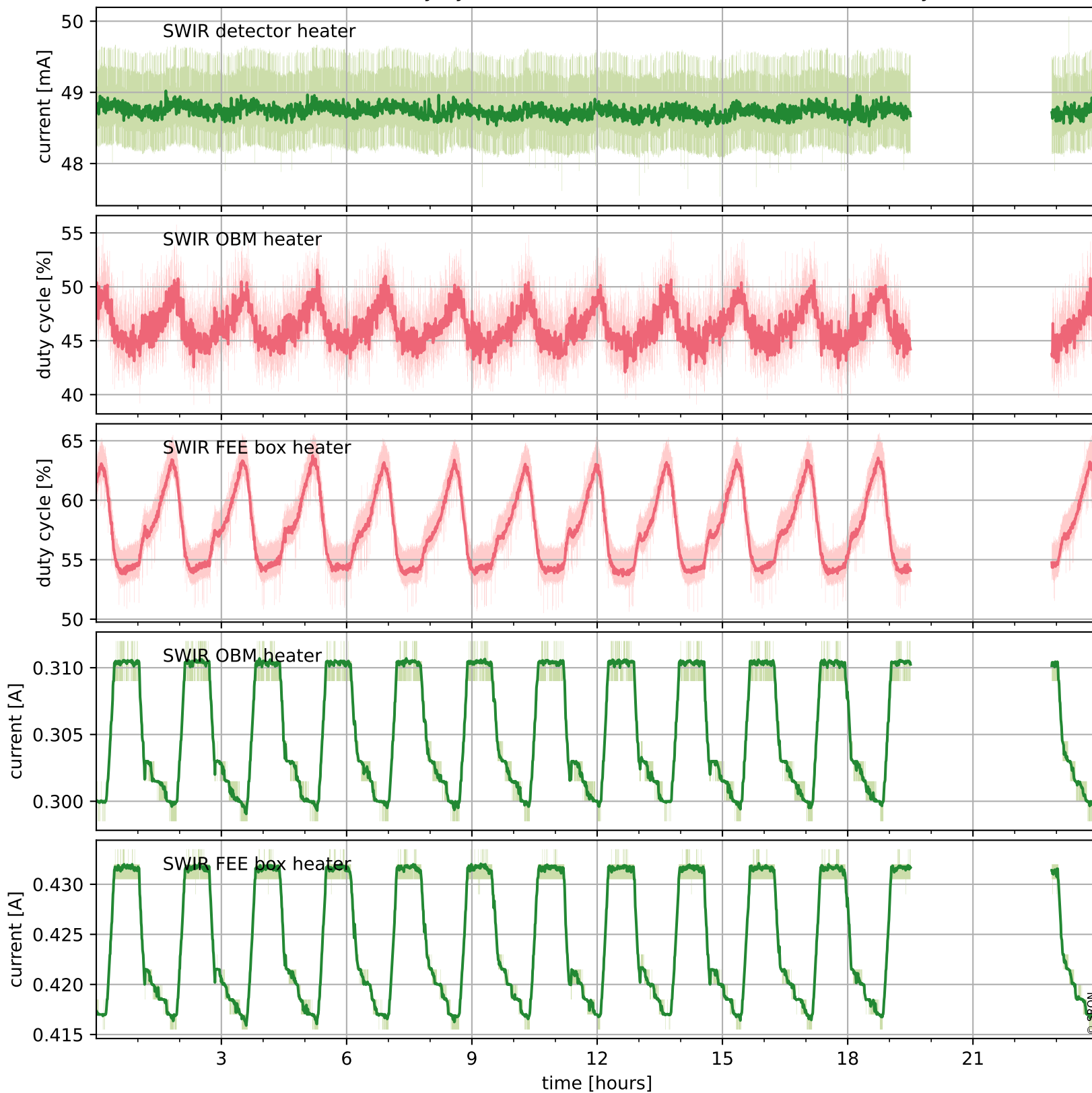
## Temperature of sensors relevant for SWIR (last month)



# Tropomi SWIR housekeeping data

orbits : [4805, 4818]  
coverage : 2018-09-17 / 2018-09-18  
created : 2023-08-21T08:35:06

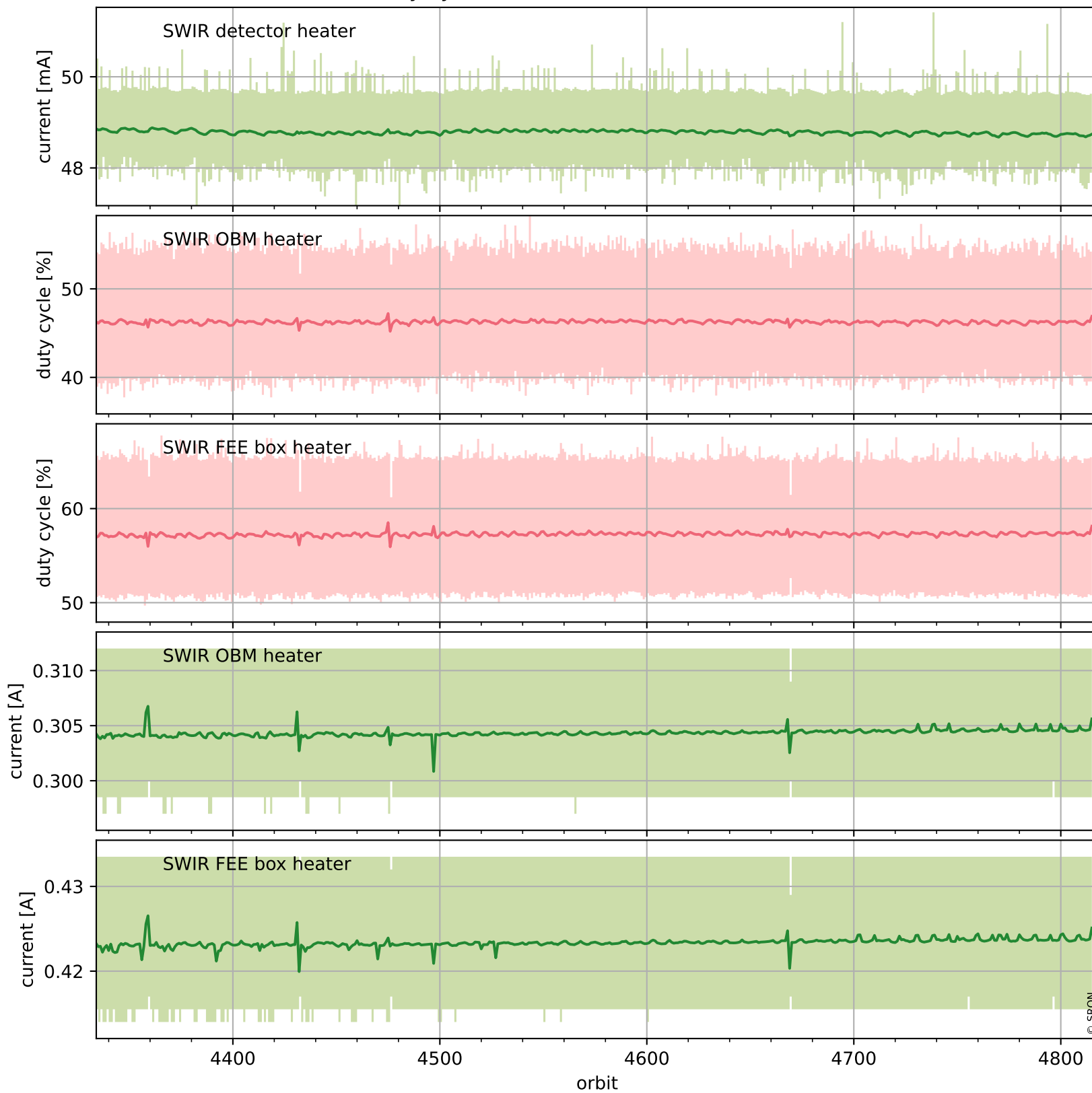
## Current and duty cycle of 3 heaters relevant for SWIR (one day)



# Tropomi SWIR housekeeping data

orbits : [4334, 4818]  
coverage : 2018-08-14 / 2018-09-18  
created : 2023-08-21T08:35:07

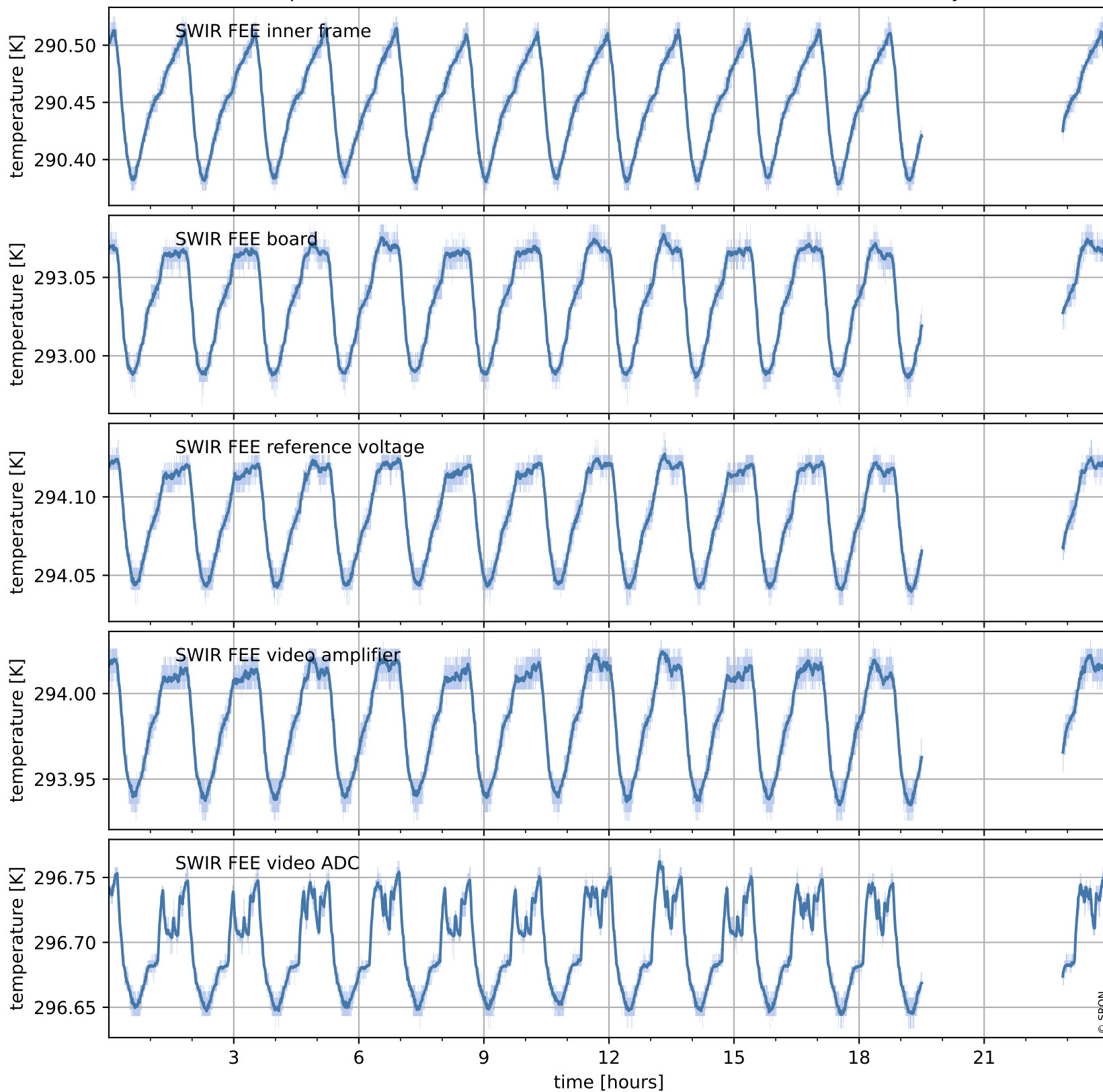
## Current and duty cycle of 3 heaters relevant for SWIR (last month)



# Tropomi SWIR housekeeping data

orbits : [4805, 4818]  
coverage : 2018-09-17 / 2018-09-18  
created : 2023-08-21T08:35:07

## Temperature of sensors at the SWIR front-end electronics (one day)



# Tropomi SWIR housekeeping data

orbits : [4334, 4818]  
coverage : 2018-08-14 / 2018-09-18  
created : 2023-08-21T08:35:07

## Temperature of sensors at the SWIR front-end electronics (last month)

