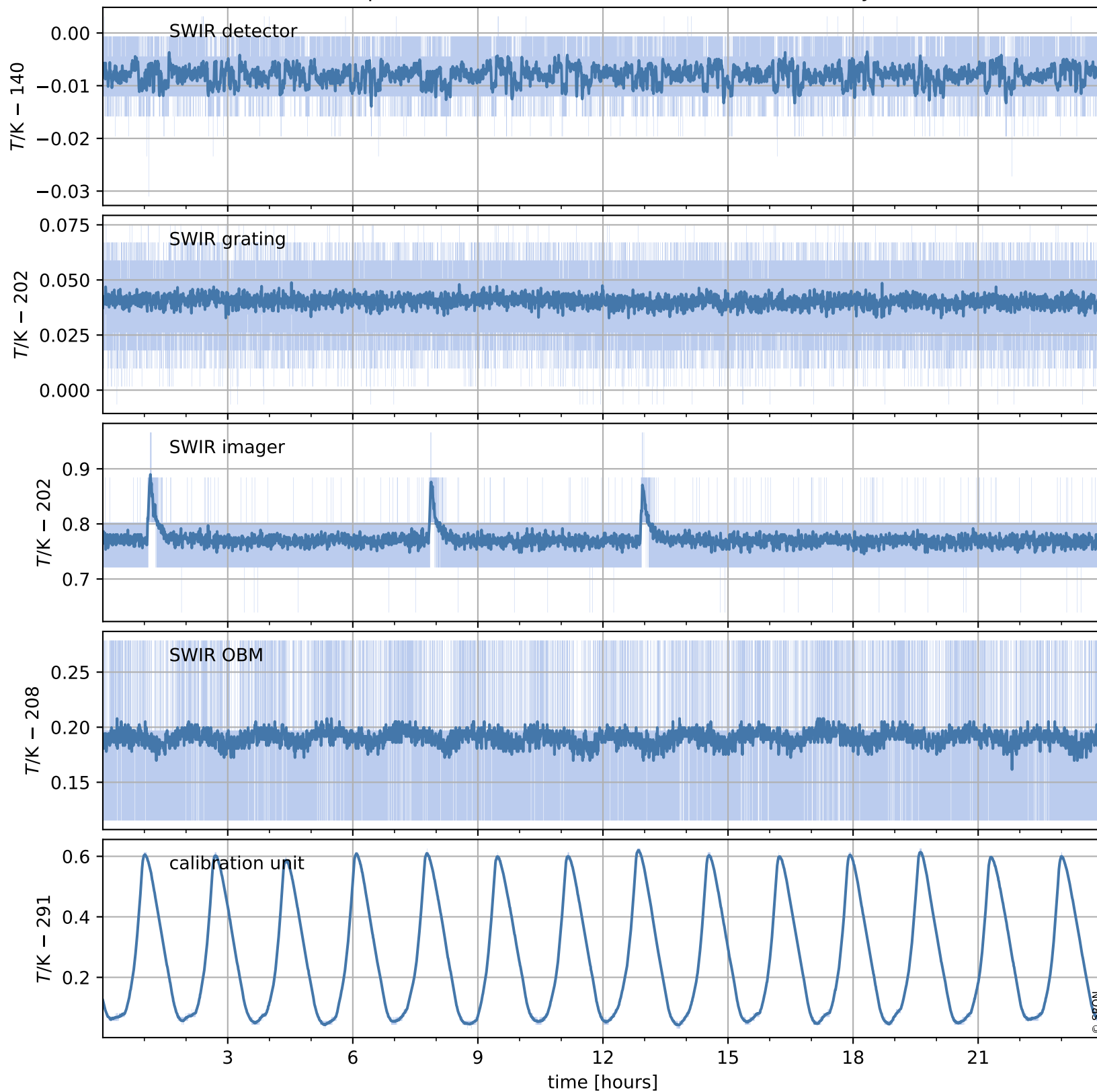


Tropomi SWIR housekeeping data

orbits : [4819, 4832]
coverage : 2018-09-18 / 2018-09-19
created : 2023-08-21T08:35:08

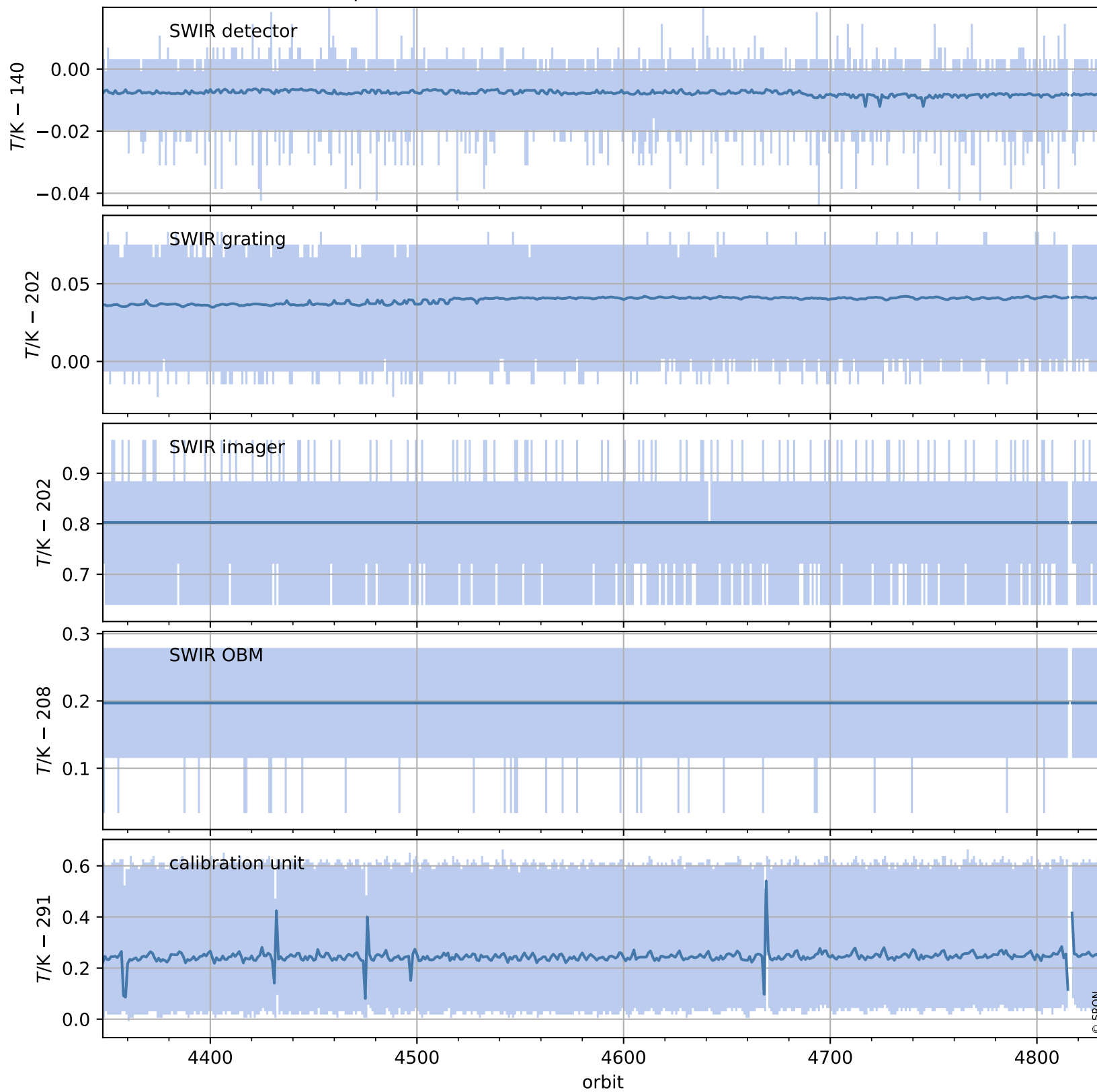
Temperature of sensors relevant for SWIR (one day)



Tropomi SWIR housekeeping data

orbits : [4348, 4832]
coverage : 2018-08-15 / 2018-09-19
created : 2023-08-21T08:35:08

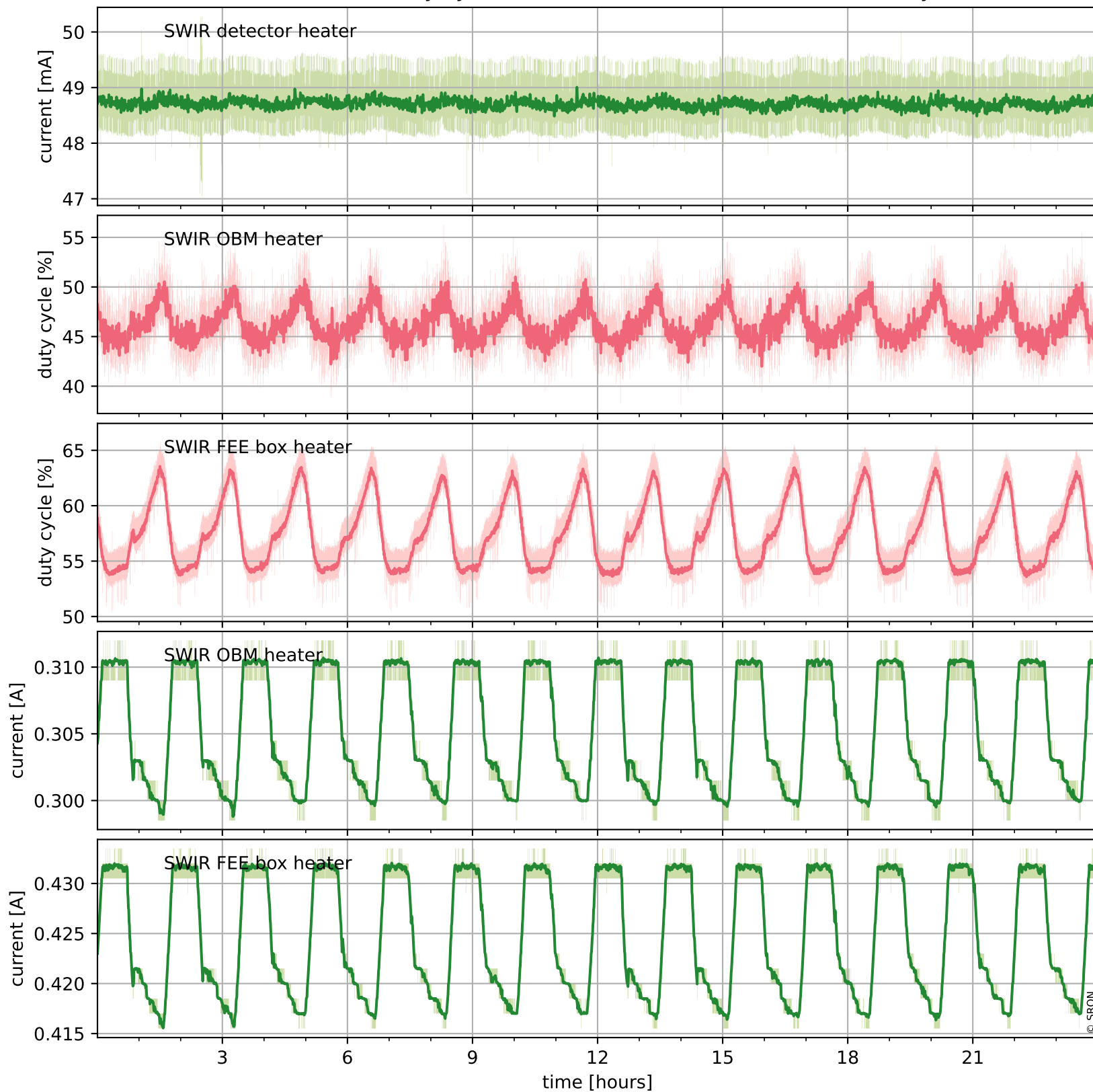
Temperature of sensors relevant for SWIR (last month)



Tropomi SWIR housekeeping data

orbits : [4819, 4832]
coverage : 2018-09-18 / 2018-09-19
created : 2023-08-21T08:35:09

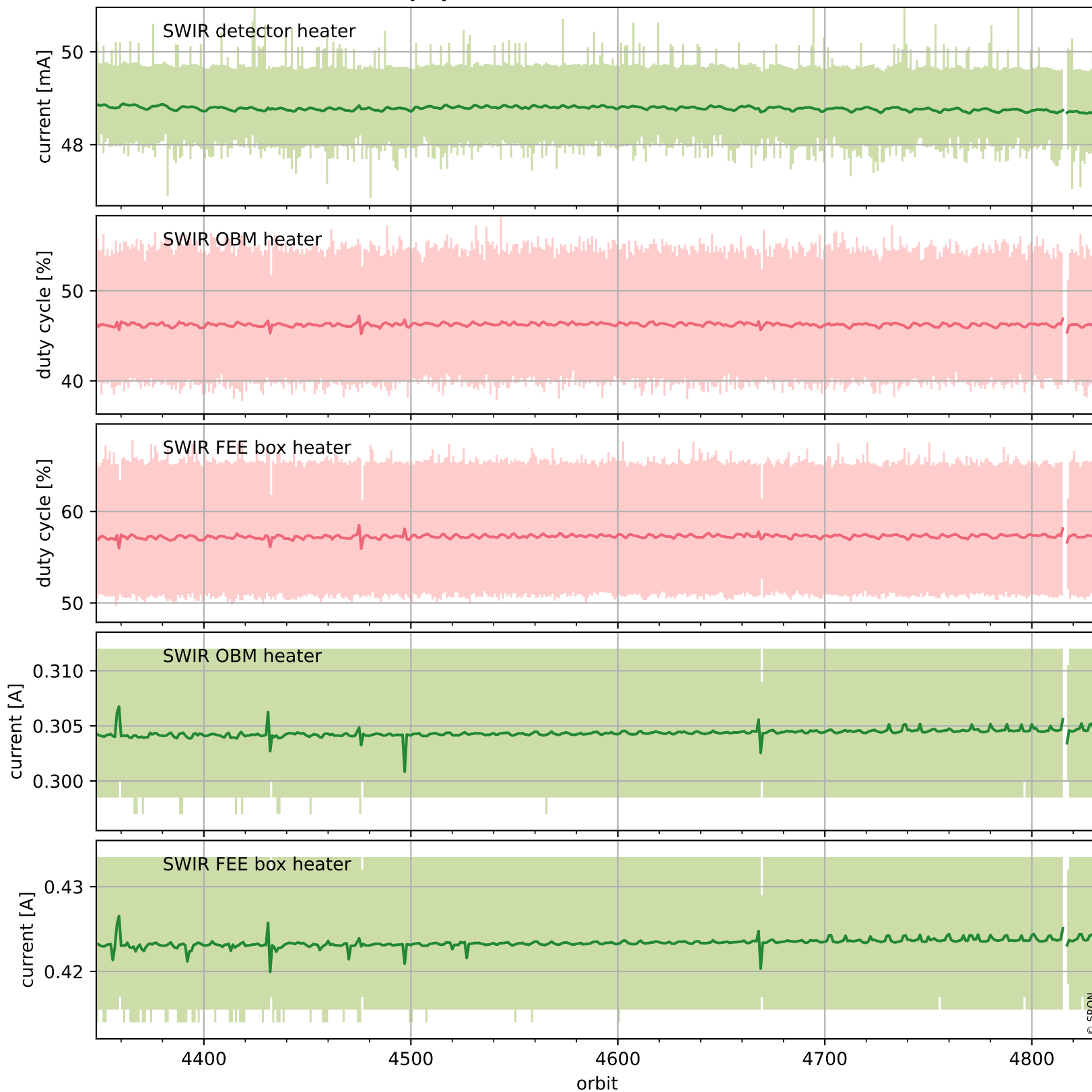
Current and duty cycle of 3 heaters relevant for SWIR (one day)



Tropomi SWIR housekeeping data

orbits : [4348, 4832]
coverage : 2018-08-15 / 2018-09-19
created : 2023-08-21T08:35:09

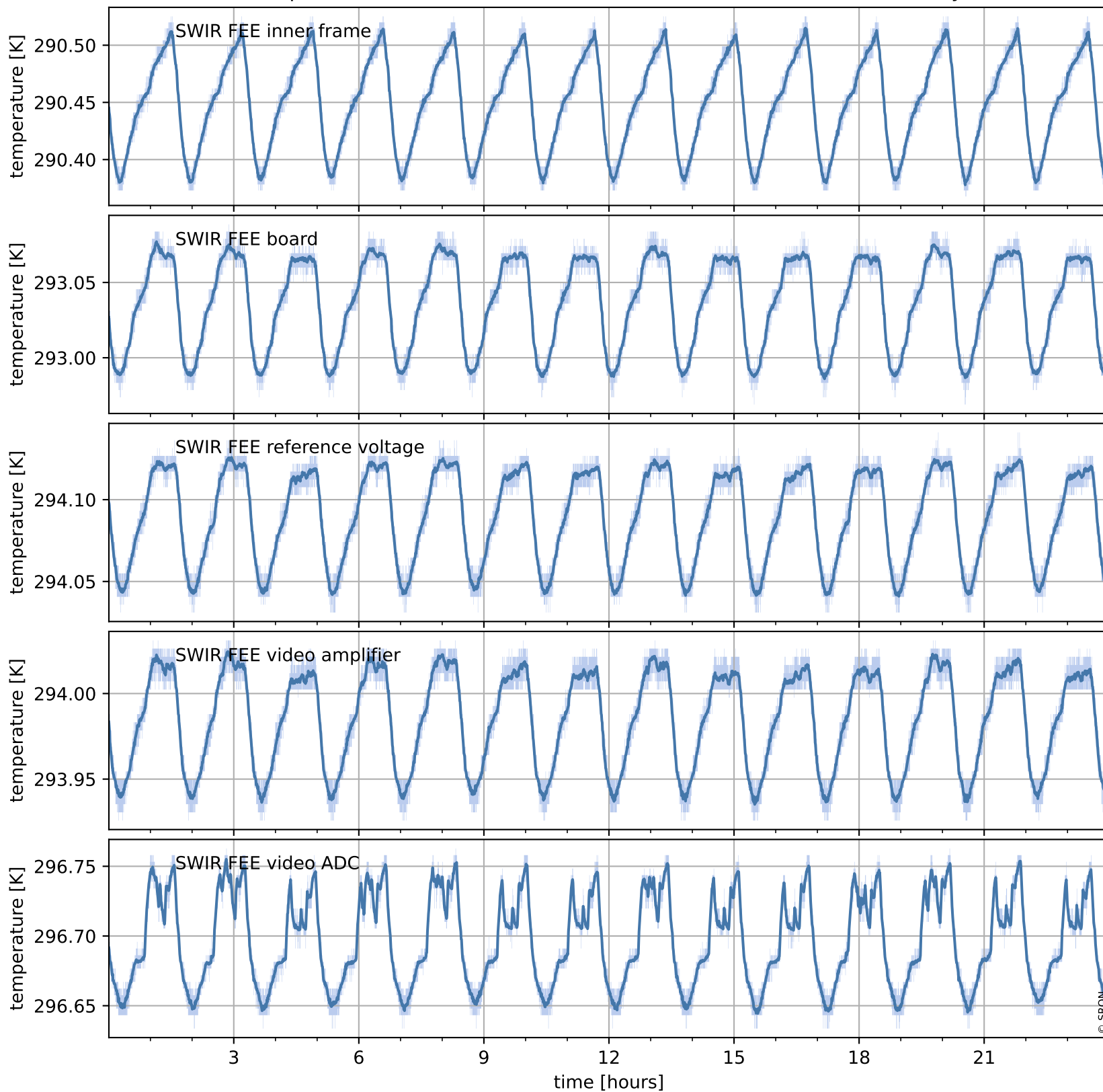
Current and duty cycle of 3 heaters relevant for SWIR (last month)



Tropomi SWIR housekeeping data

orbits : [4819, 4832]
coverage : 2018-09-18 / 2018-09-19
created : 2023-08-21T08:35:09

Temperature of sensors at the SWIR front-end electronics (one day)



Tropomi SWIR housekeeping data

orbits : [4348, 4832]
coverage : 2018-08-15 / 2018-09-19
created : 2023-08-21T08:35:10

Temperature of sensors at the SWIR front-end electronics (last month)

