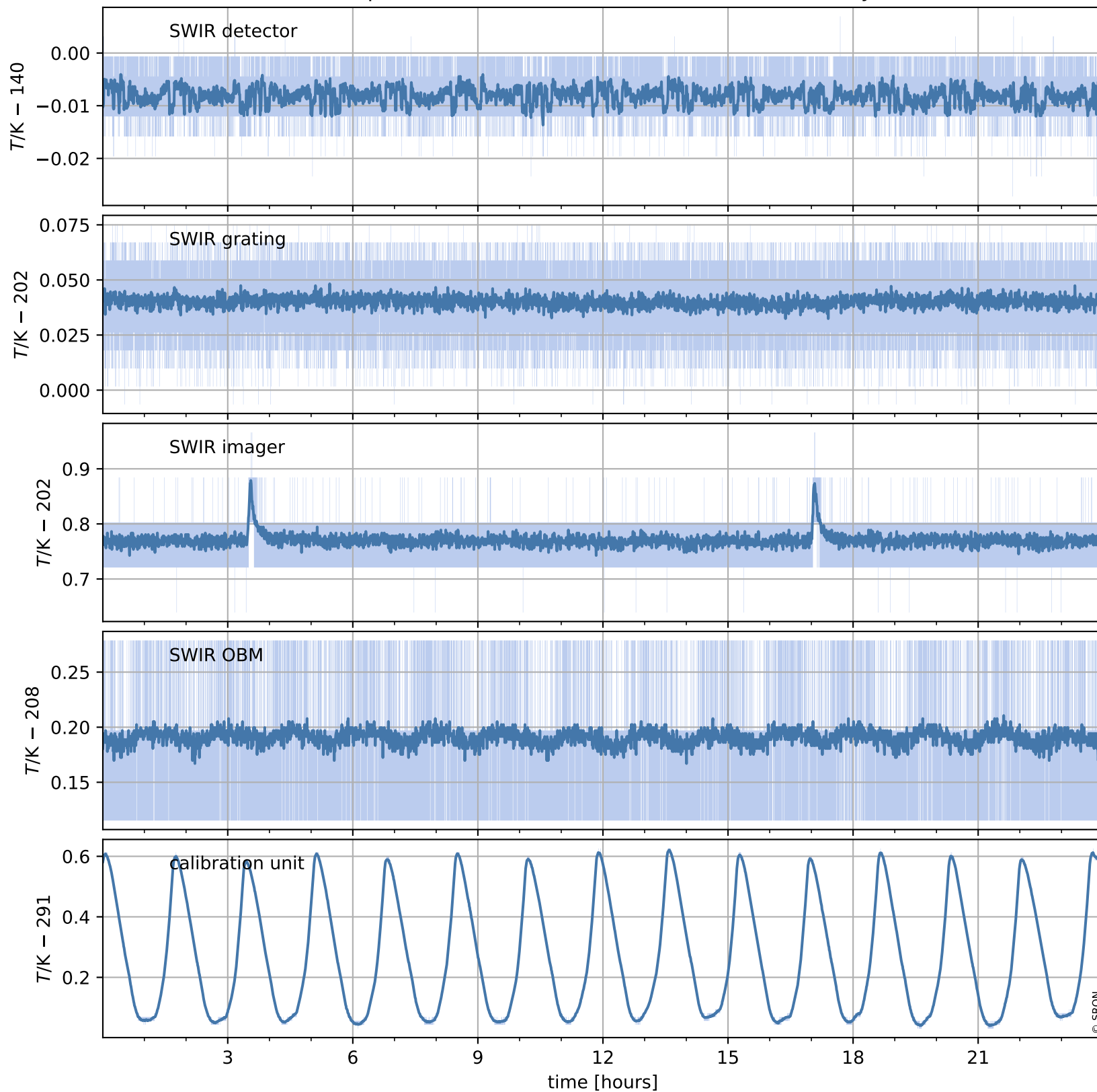


Tropomi SWIR housekeeping data

orbits : [4861, 4875]
coverage : 2018-09-21 / 2018-09-22
created : 2023-08-21T08:35:15

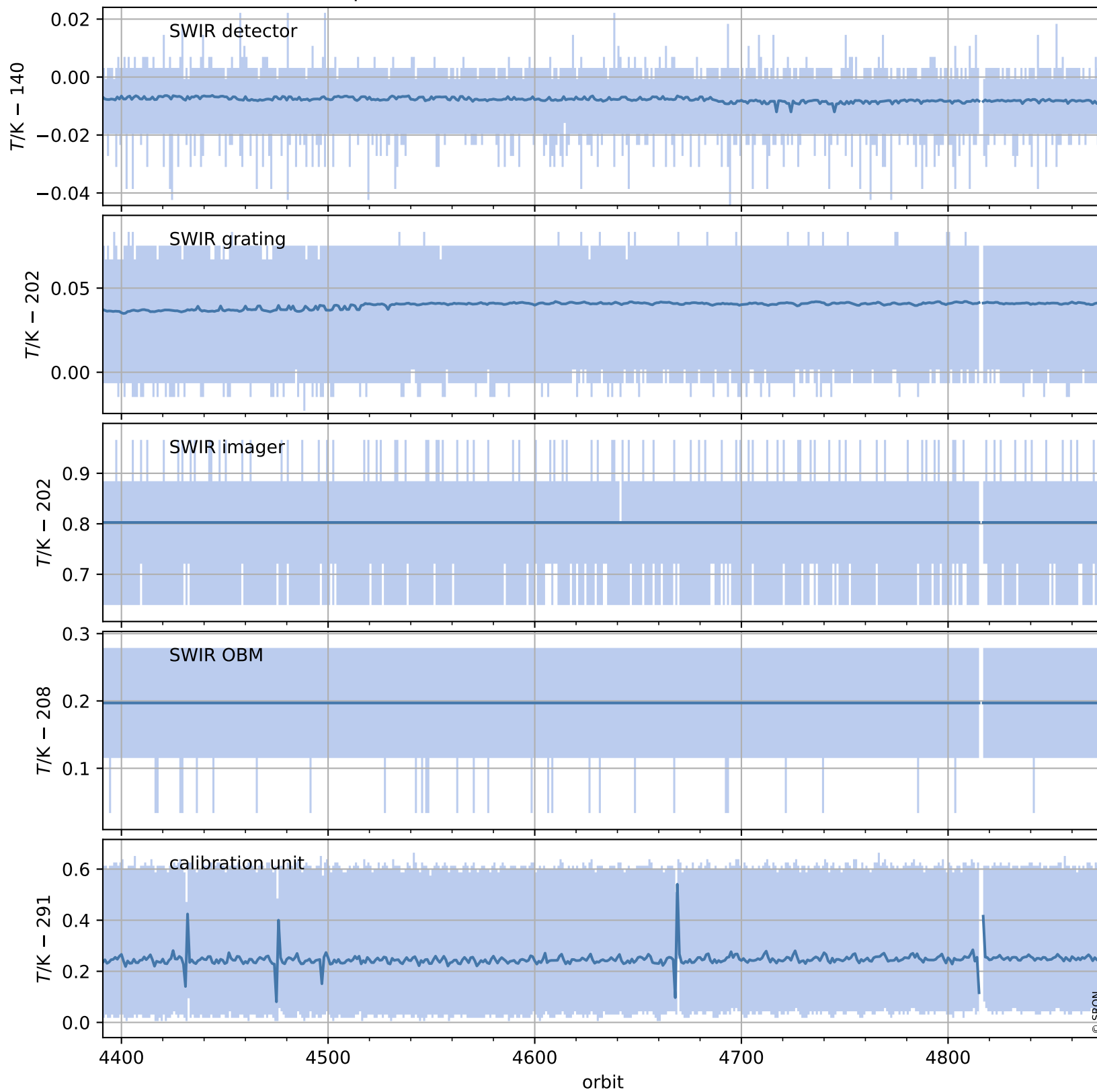
Temperature of sensors relevant for SWIR (one day)



Tropomi SWIR housekeeping data

orbits : [4391, 4875]
coverage : 2018-08-18 / 2018-09-22
created : 2023-08-21T08:35:15

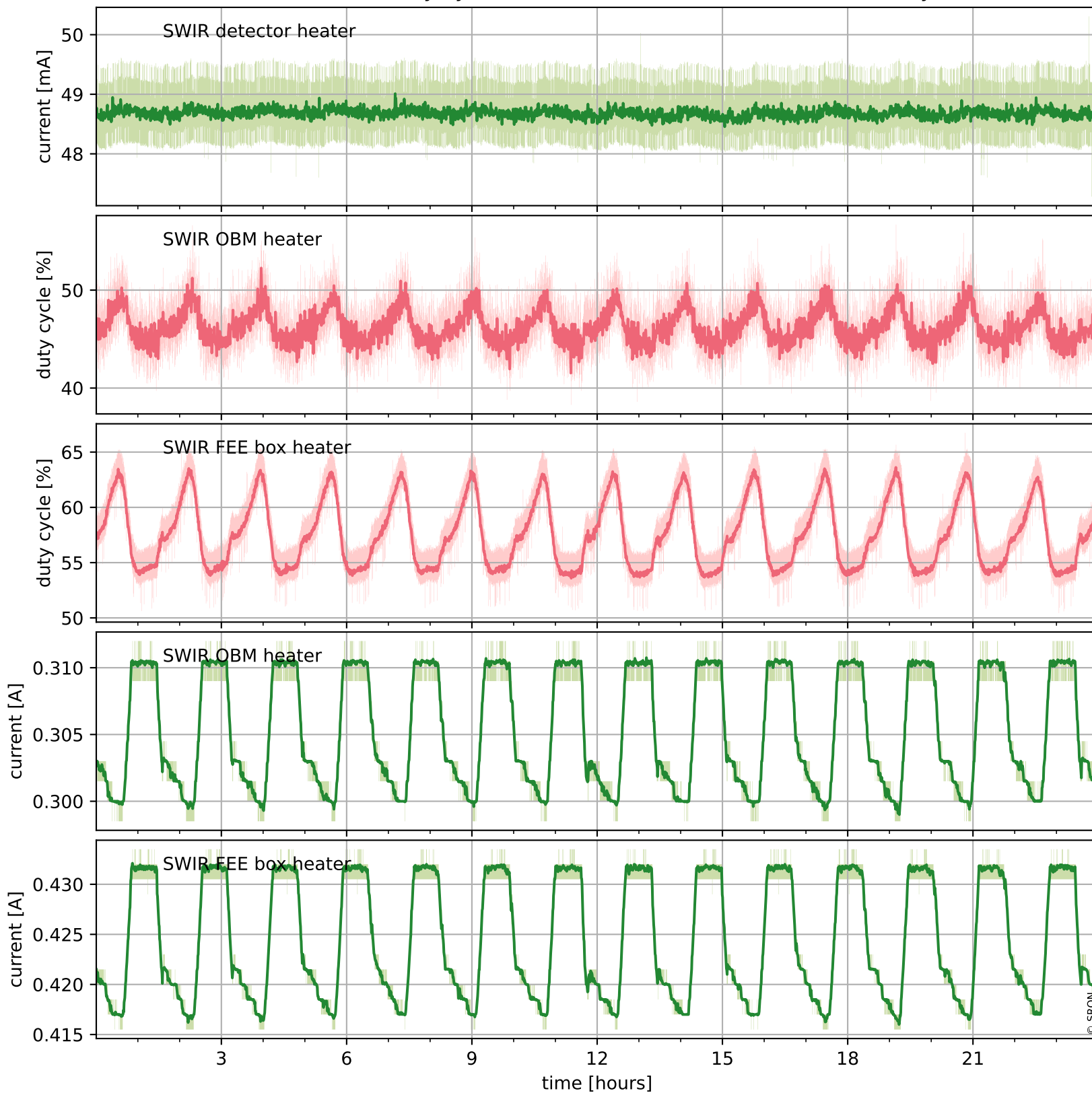
Temperature of sensors relevant for SWIR (last month)



Tropomi SWIR housekeeping data

orbits : [4861, 4875]
coverage : 2018-09-21 / 2018-09-22
created : 2023-08-21T08:35:16

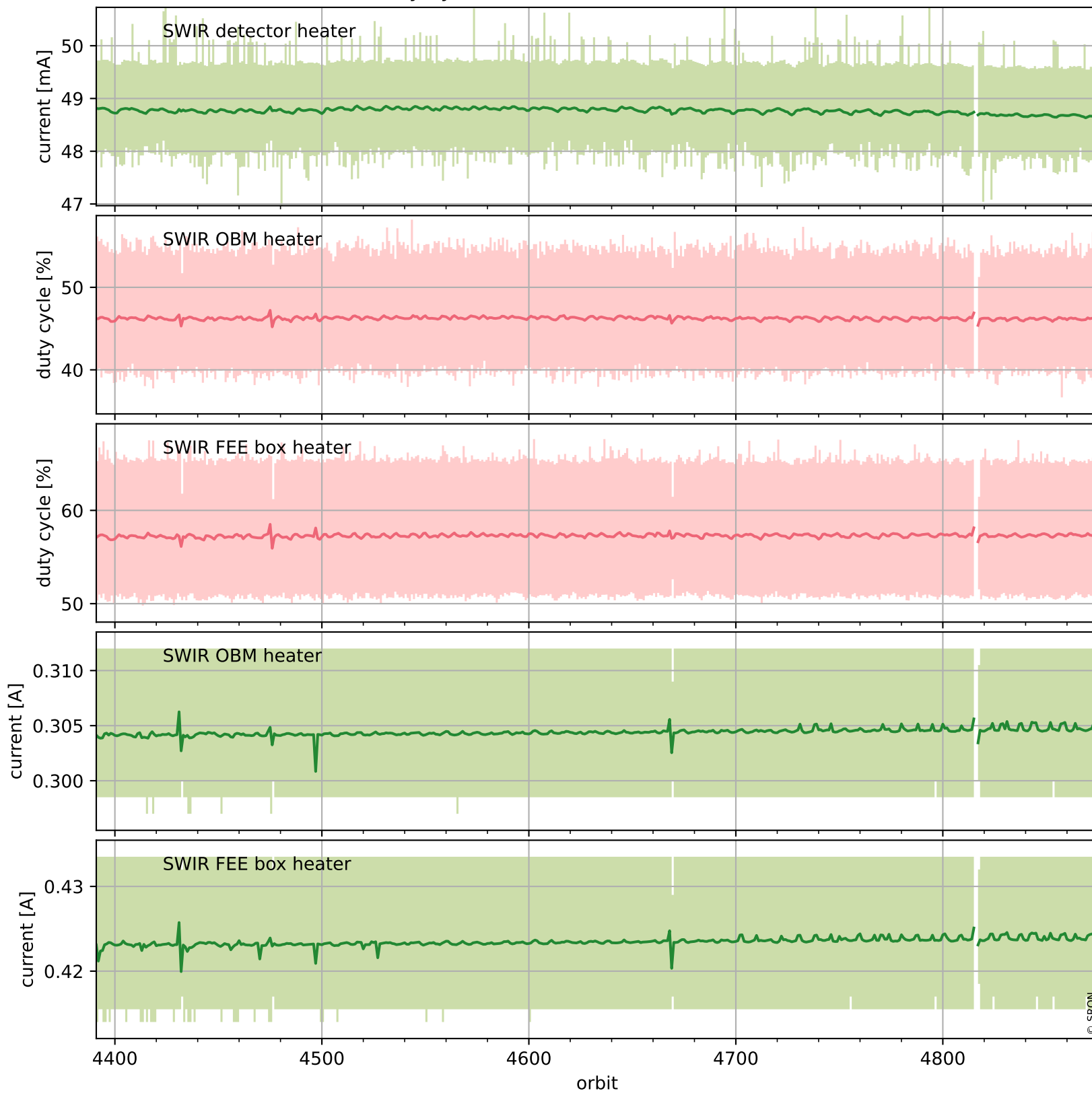
Current and duty cycle of 3 heaters relevant for SWIR (one day)



Tropomi SWIR housekeeping data

orbits : [4391, 4875]
coverage : 2018-08-18 / 2018-09-22
created : 2023-08-21T08:35:16

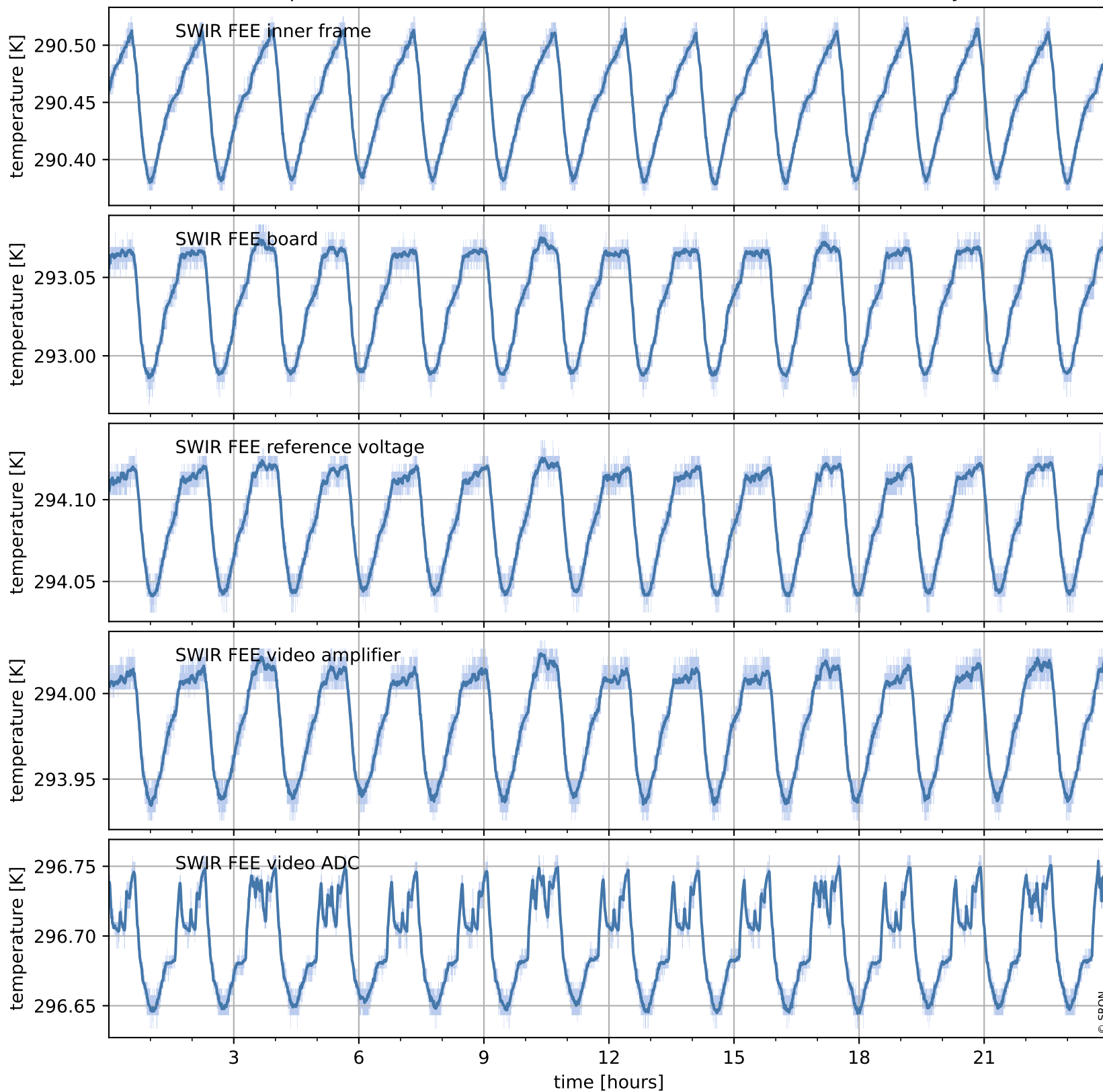
Current and duty cycle of 3 heaters relevant for SWIR (last month)



Tropomi SWIR housekeeping data

orbits : [4861, 4875]
coverage : 2018-09-21 / 2018-09-22
created : 2023-08-21T08:35:16

Temperature of sensors at the SWIR front-end electronics (one day)



Tropomi SWIR housekeeping data

orbits : [4391, 4875]
coverage : 2018-08-18 / 2018-09-22
created : 2023-08-21T08:35:17

Temperature of sensors at the SWIR front-end electronics (last month)

