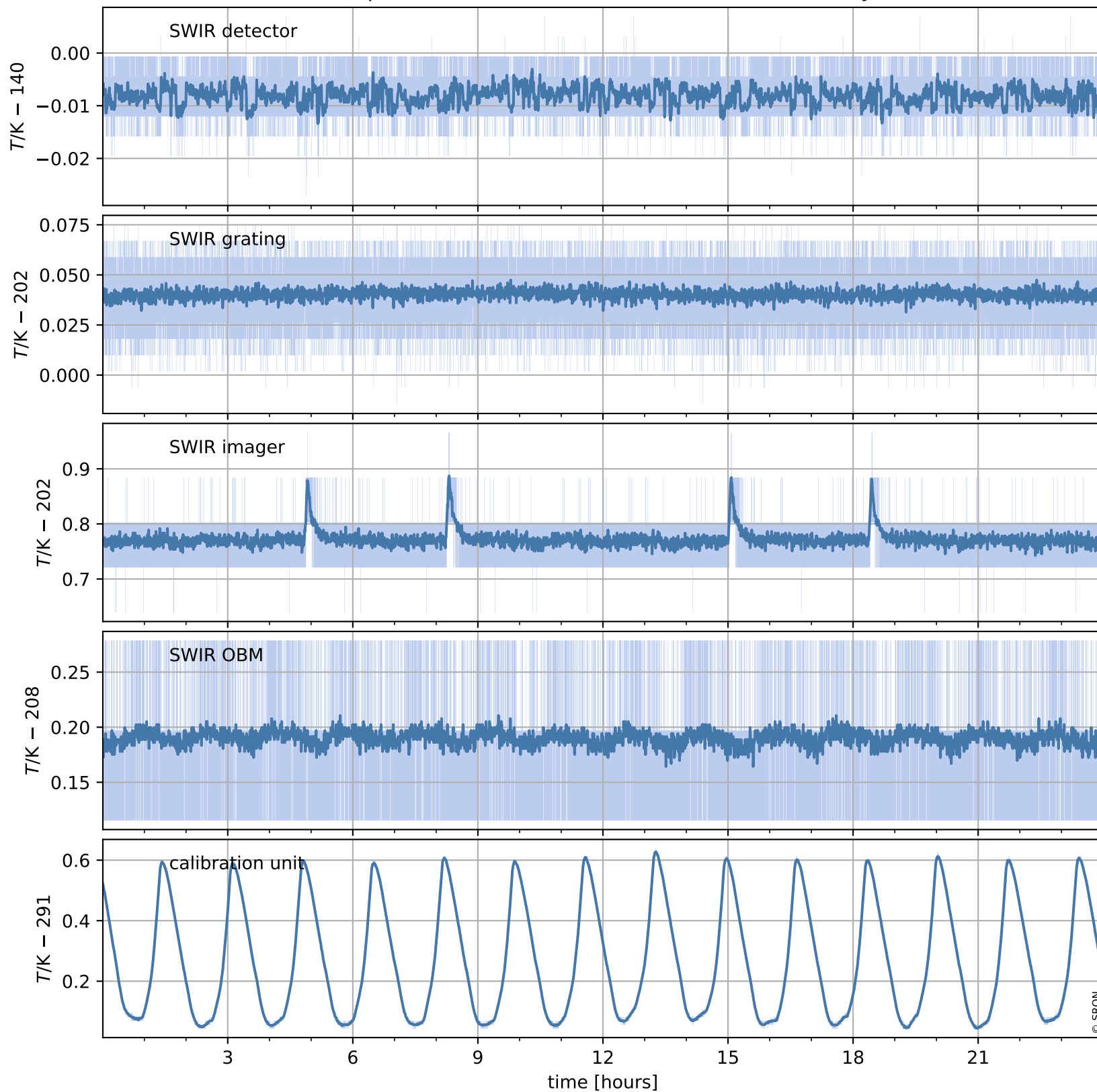


Tropomi SWIR housekeeping data

orbits : [4876, 4889]
coverage : 2018-09-22 / 2018-09-23
created : 2023-08-21T08:35:17

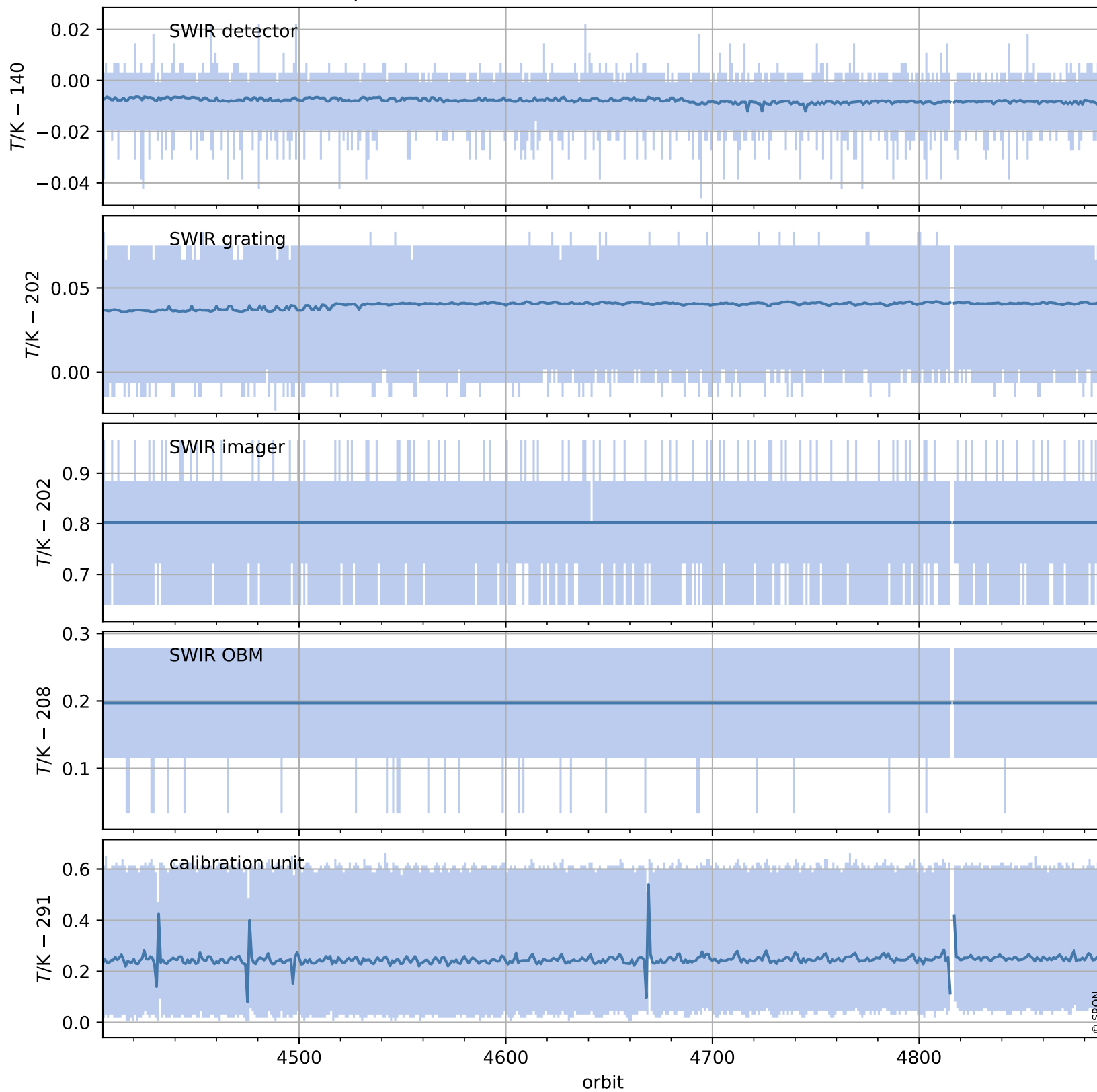
Temperature of sensors relevant for SWIR (one day)



Tropomi SWIR housekeeping data

orbits : [4405, 4889]
coverage : 2018-08-19 / 2018-09-23
created : 2023-08-21T08:35:18

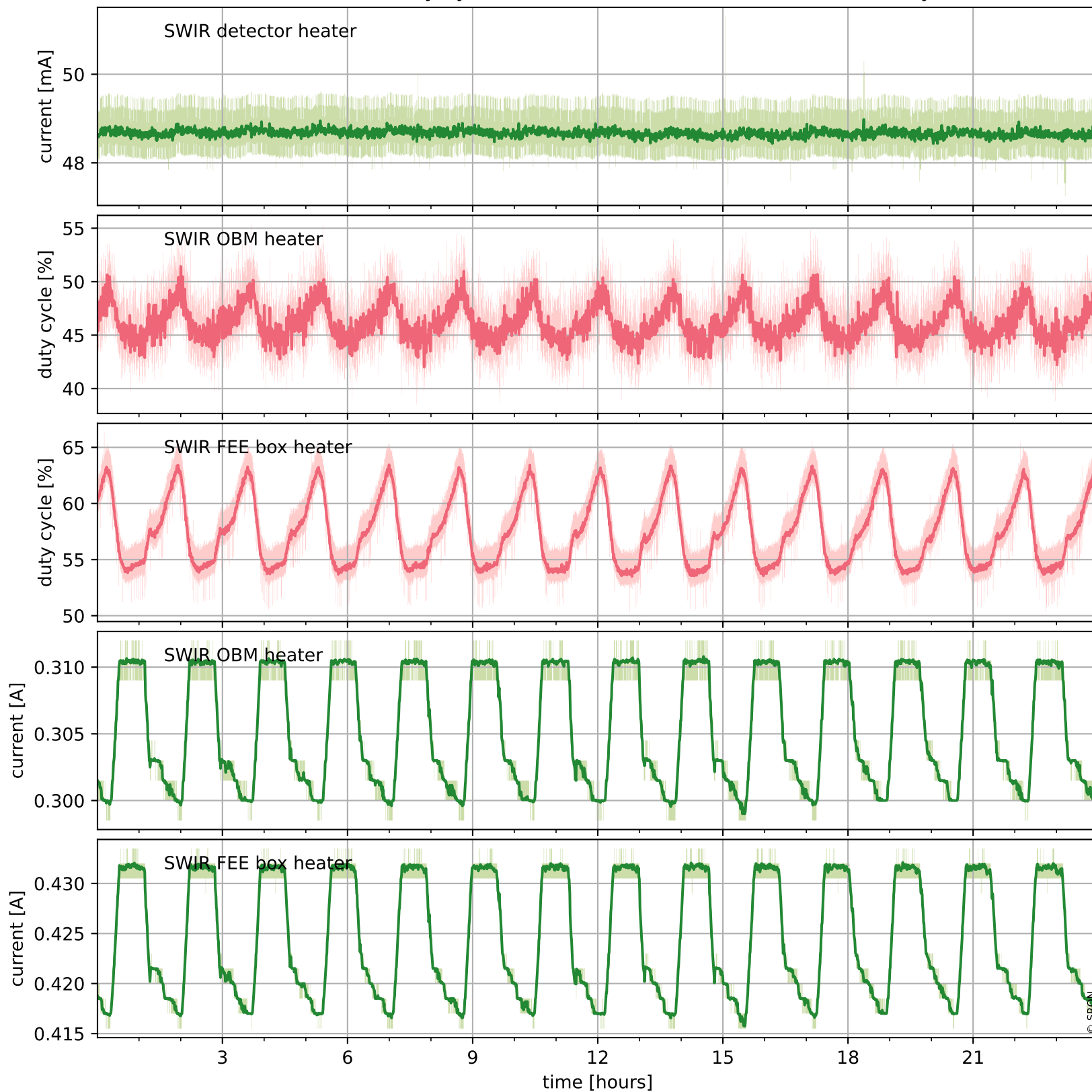
Temperature of sensors relevant for SWIR (last month)



Tropomi SWIR housekeeping data

orbits : [4876, 4889]
coverage : 2018-09-22 / 2018-09-23
created : 2023-08-21T08:35:18

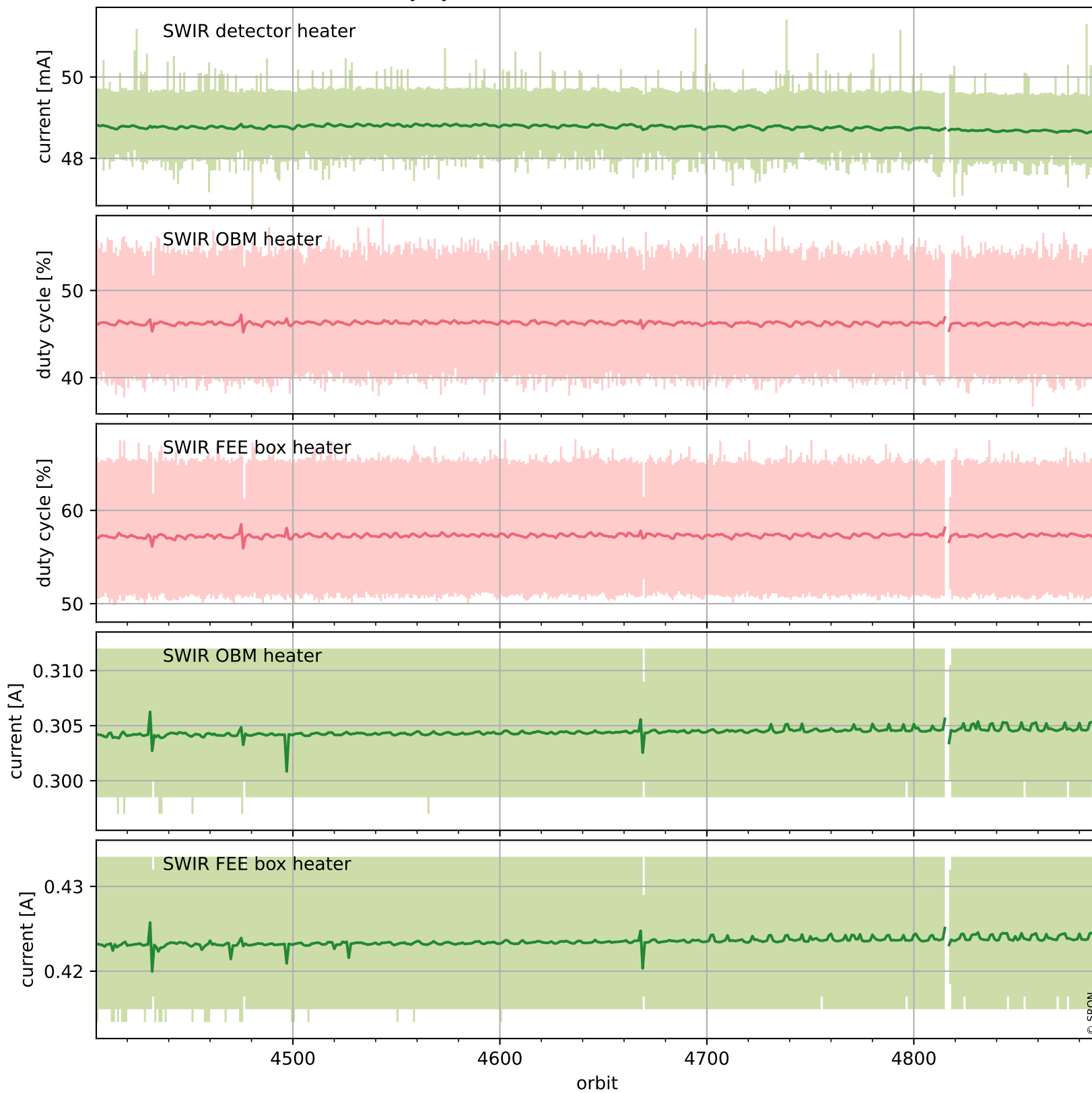
Current and duty cycle of 3 heaters relevant for SWIR (one day)



Tropomi SWIR housekeeping data

orbits : [4405, 4889]
coverage : 2018-08-19 / 2018-09-23
created : 2023-08-21T08:35:18

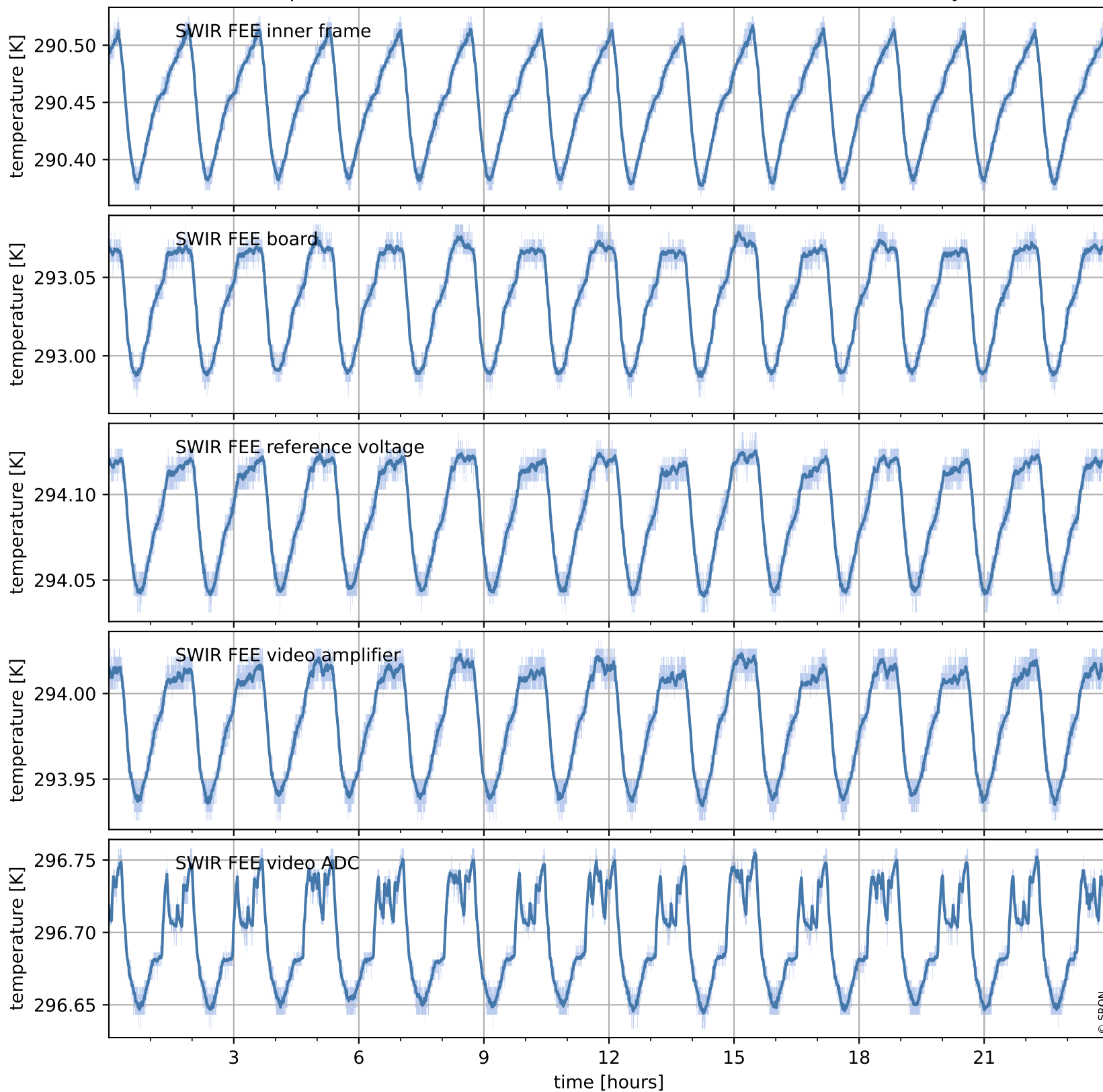
Current and duty cycle of 3 heaters relevant for SWIR (last month)



Tropomi SWIR housekeeping data

orbits : [4876, 4889]
coverage : 2018-09-22 / 2018-09-23
created : 2023-08-21T08:35:19

Temperature of sensors at the SWIR front-end electronics (one day)



Tropomi SWIR housekeeping data

orbits : [4405, 4889]
coverage : 2018-08-19 / 2018-09-23
created : 2023-08-21T08:35:19

Temperature of sensors at the SWIR front-end electronics (last month)

