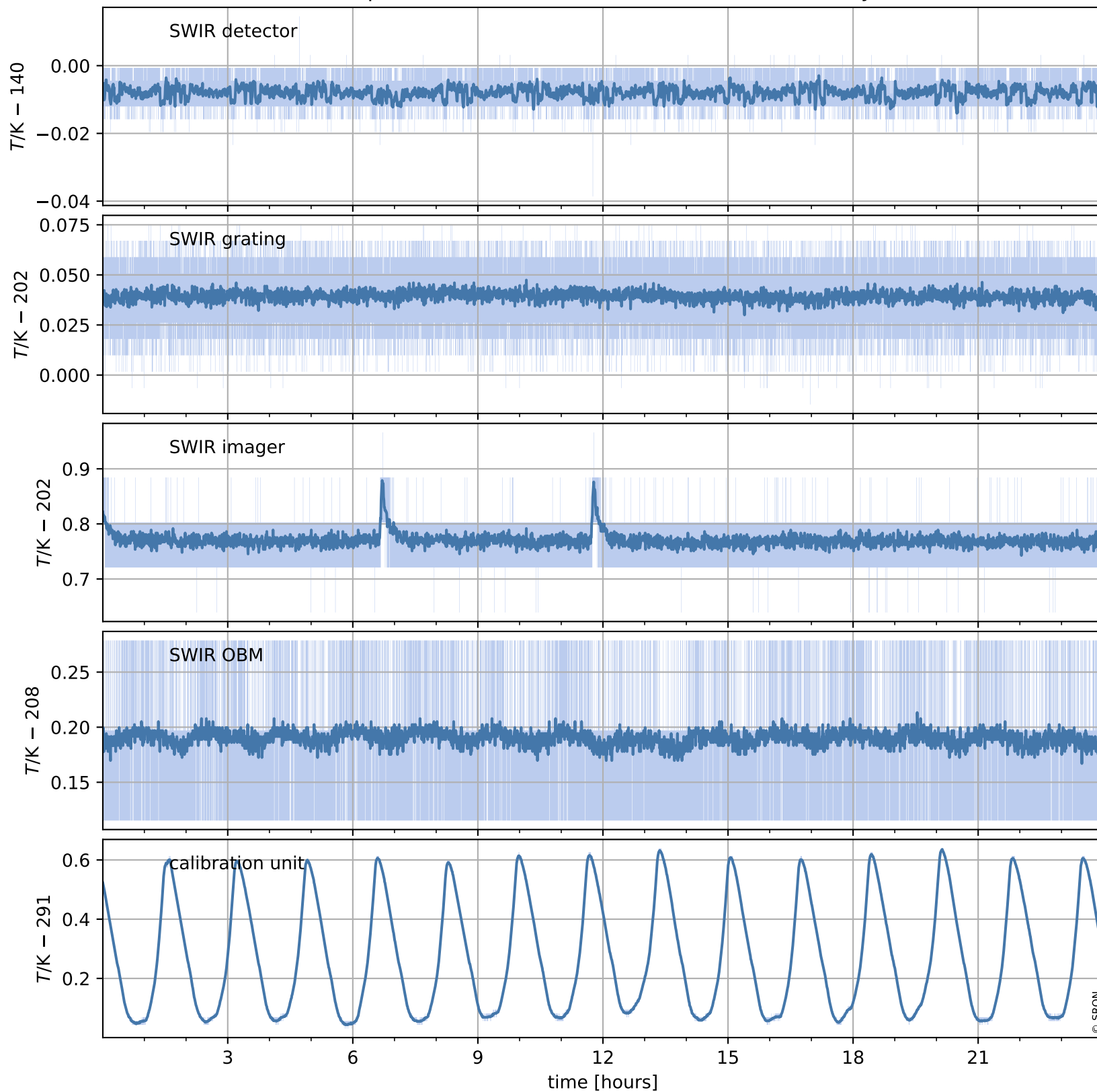


Tropomi SWIR housekeeping data

orbits : [4946, 4960]
coverage : 2018-09-27 / 2018-09-28
created : 2023-08-21T08:35:29

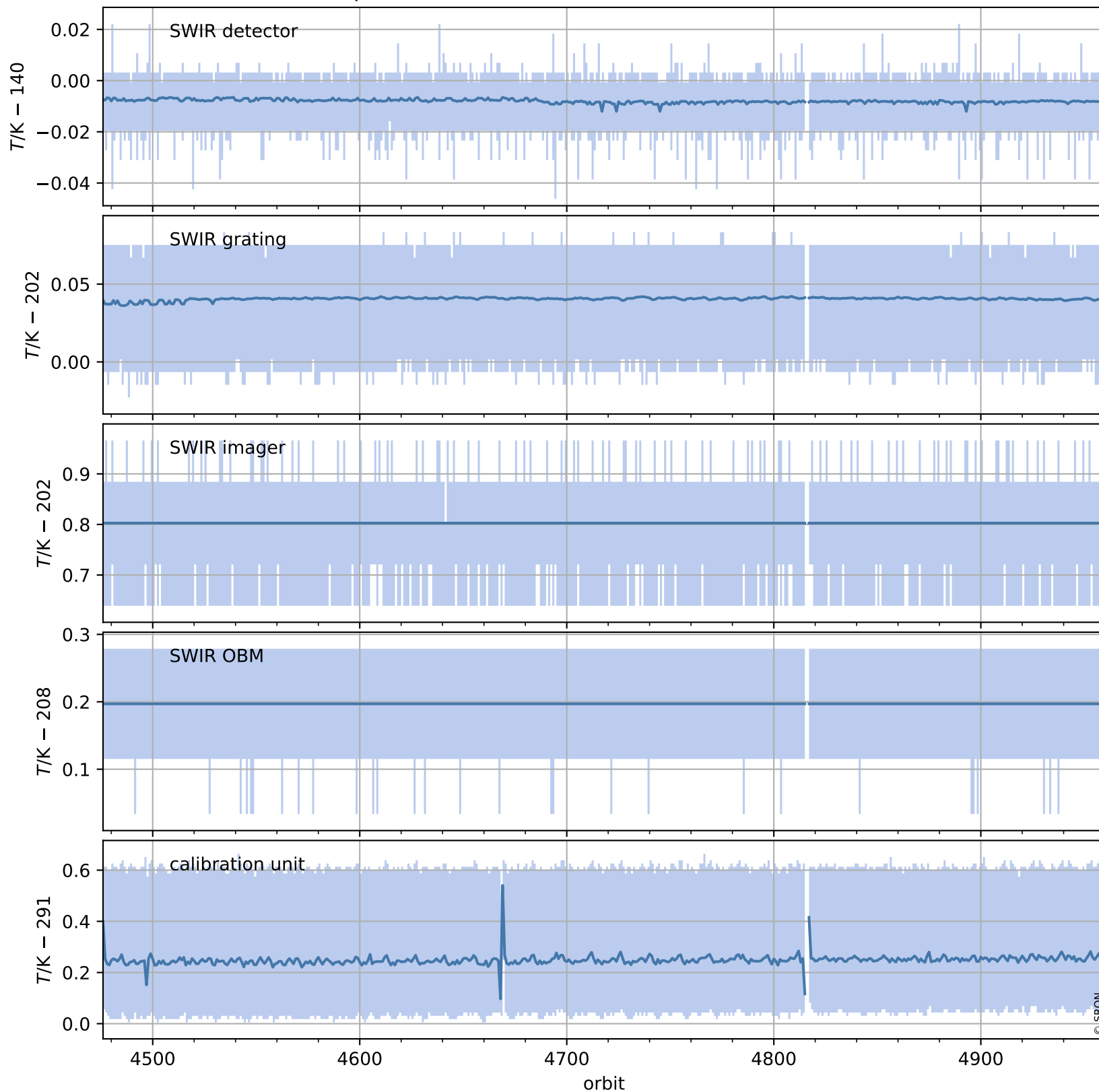
Temperature of sensors relevant for SWIR (one day)



Tropomi SWIR housekeeping data

orbits : [4476, 4960]
coverage : 2018-08-24 / 2018-09-28
created : 2023-08-21T08:35:29

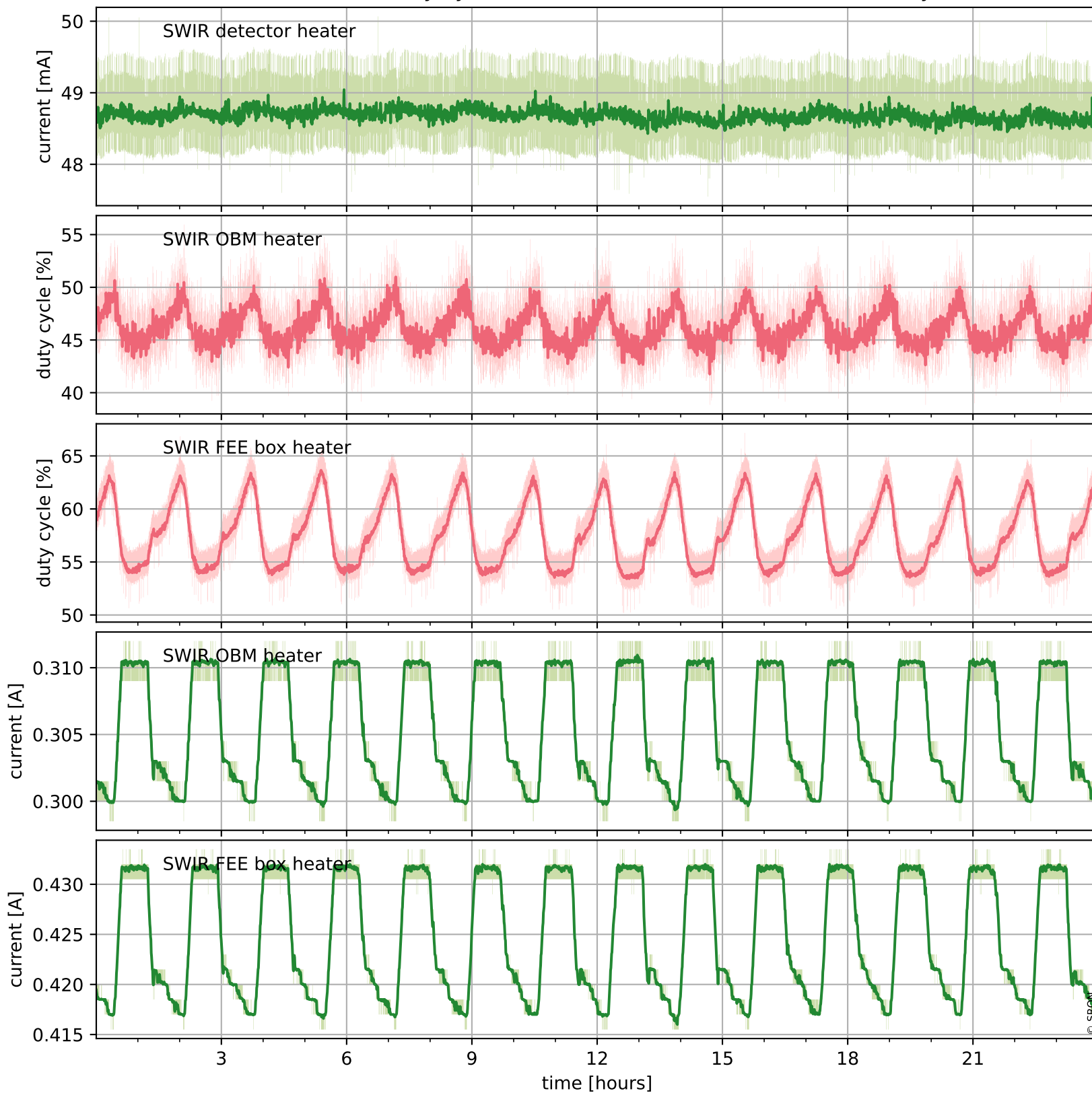
Temperature of sensors relevant for SWIR (last month)



Tropomi SWIR housekeeping data

orbits : [4946, 4960]
coverage : 2018-09-27 / 2018-09-28
created : 2023-08-21T08:35:30

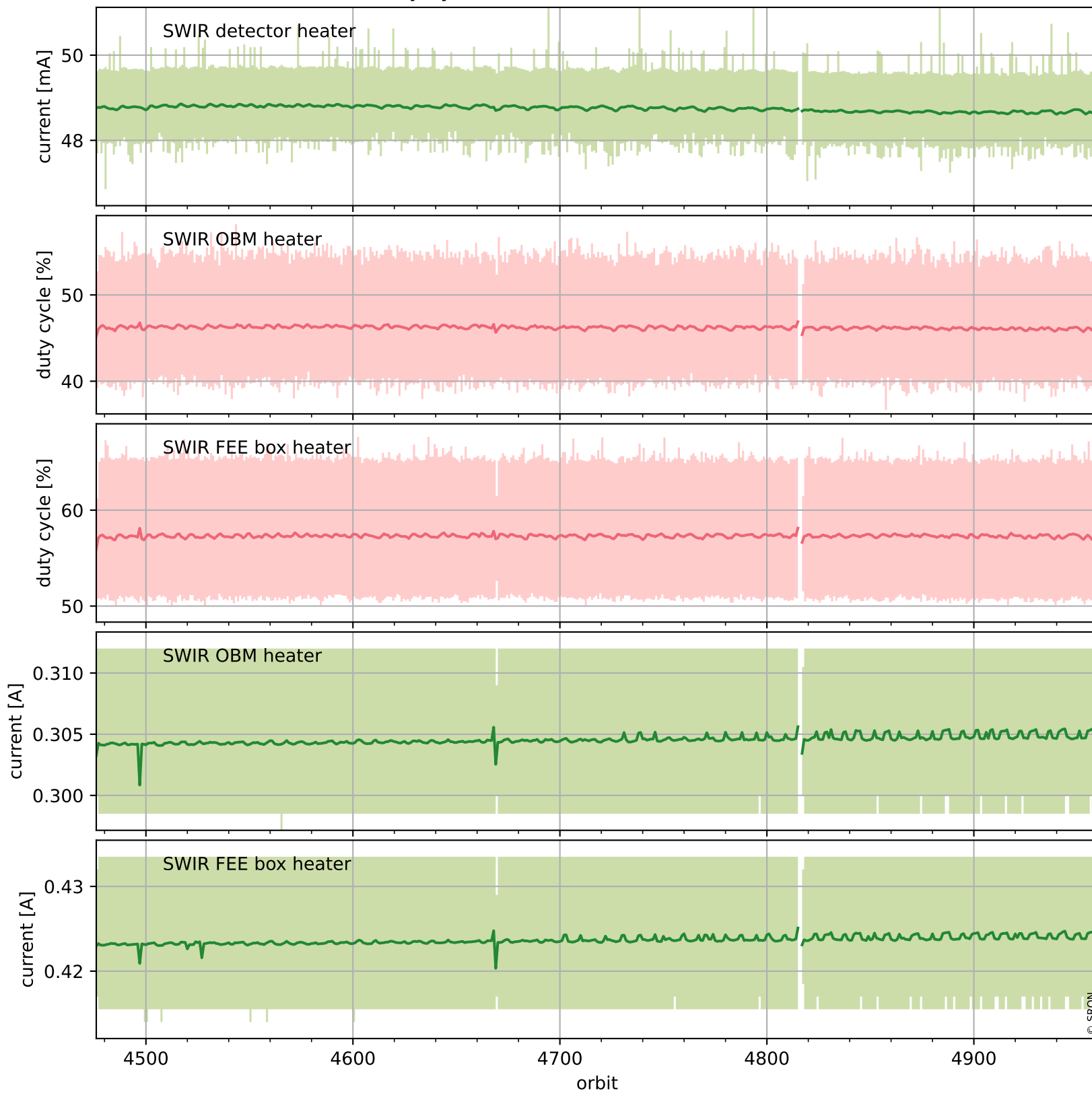
Current and duty cycle of 3 heaters relevant for SWIR (one day)



Tropomi SWIR housekeeping data

orbits : [4476, 4960]
coverage : 2018-08-24 / 2018-09-28
created : 2023-08-21T08:35:30

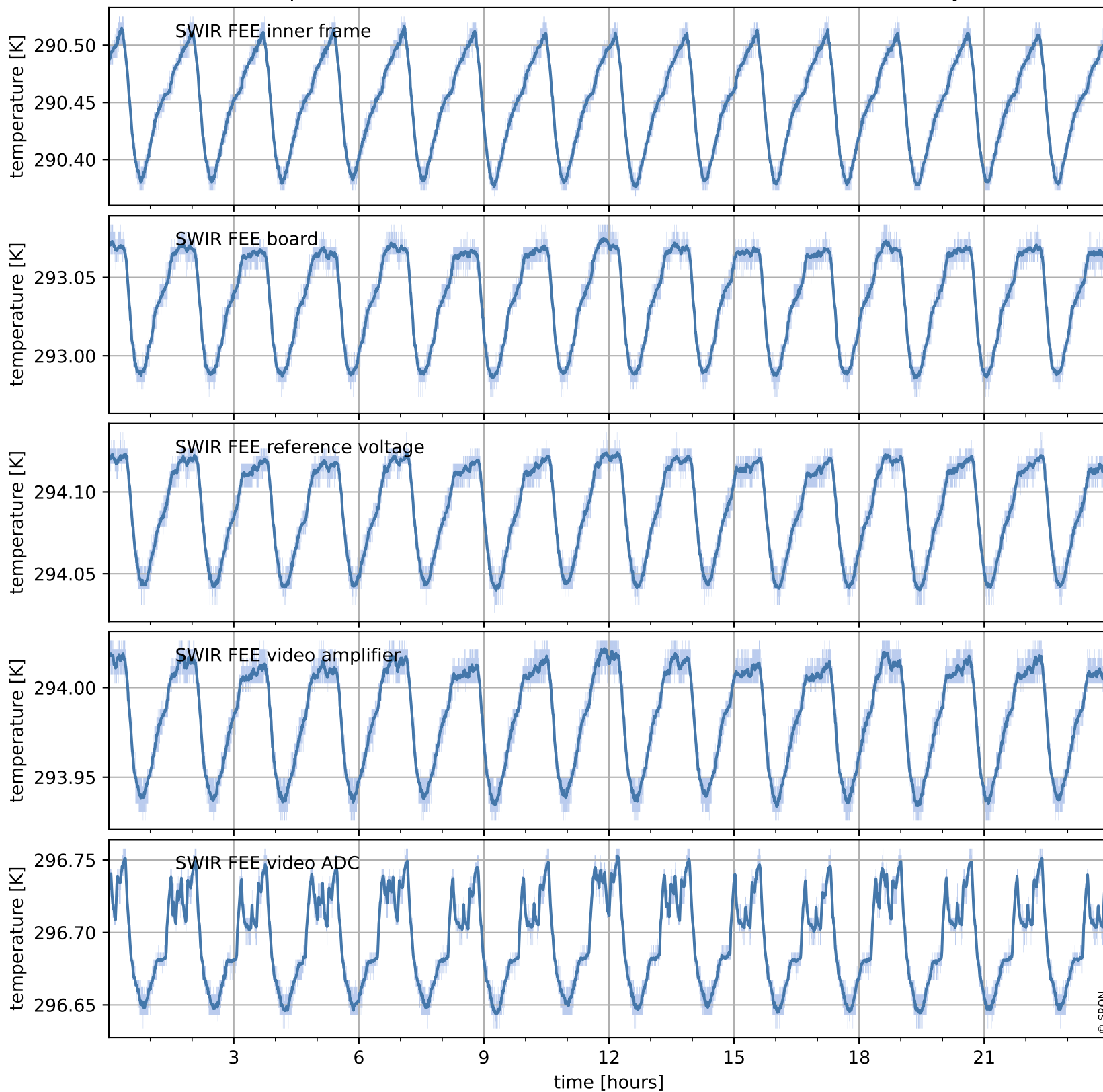
Current and duty cycle of 3 heaters relevant for SWIR (last month)



Tropomi SWIR housekeeping data

orbits : [4946, 4960]
coverage : 2018-09-27 / 2018-09-28
created : 2023-08-21T08:35:31

Temperature of sensors at the SWIR front-end electronics (one day)



Tropomi SWIR housekeeping data

orbits : [4476, 4960]
coverage : 2018-08-24 / 2018-09-28
created : 2023-08-21T08:35:31

Temperature of sensors at the SWIR front-end electronics (last month)

