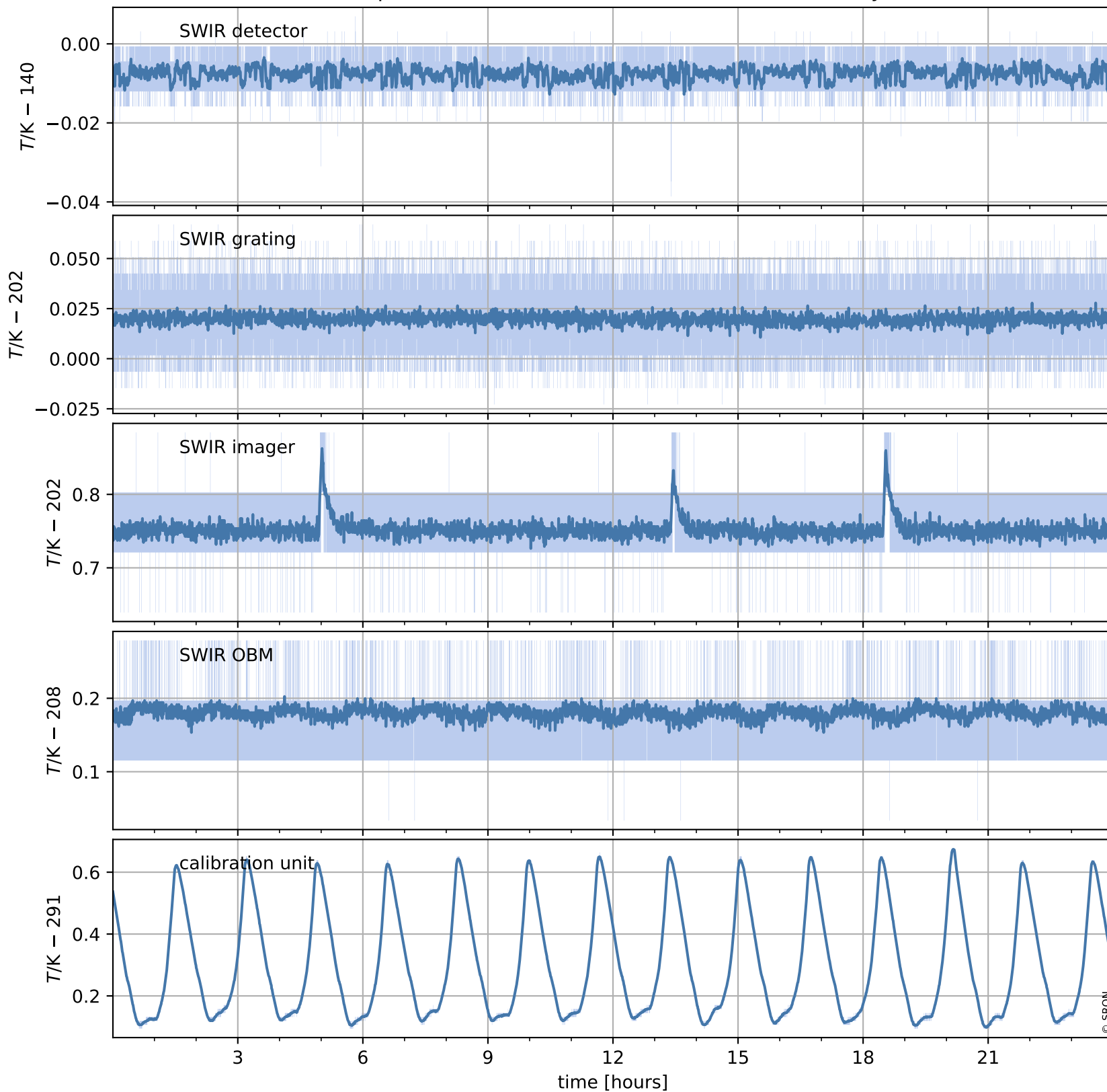


# Tropomi SWIR housekeeping data

orbits : [5925, 5939]  
coverage : 2018-12-05 / 2018-12-06  
created : 2023-08-21T08:38:12

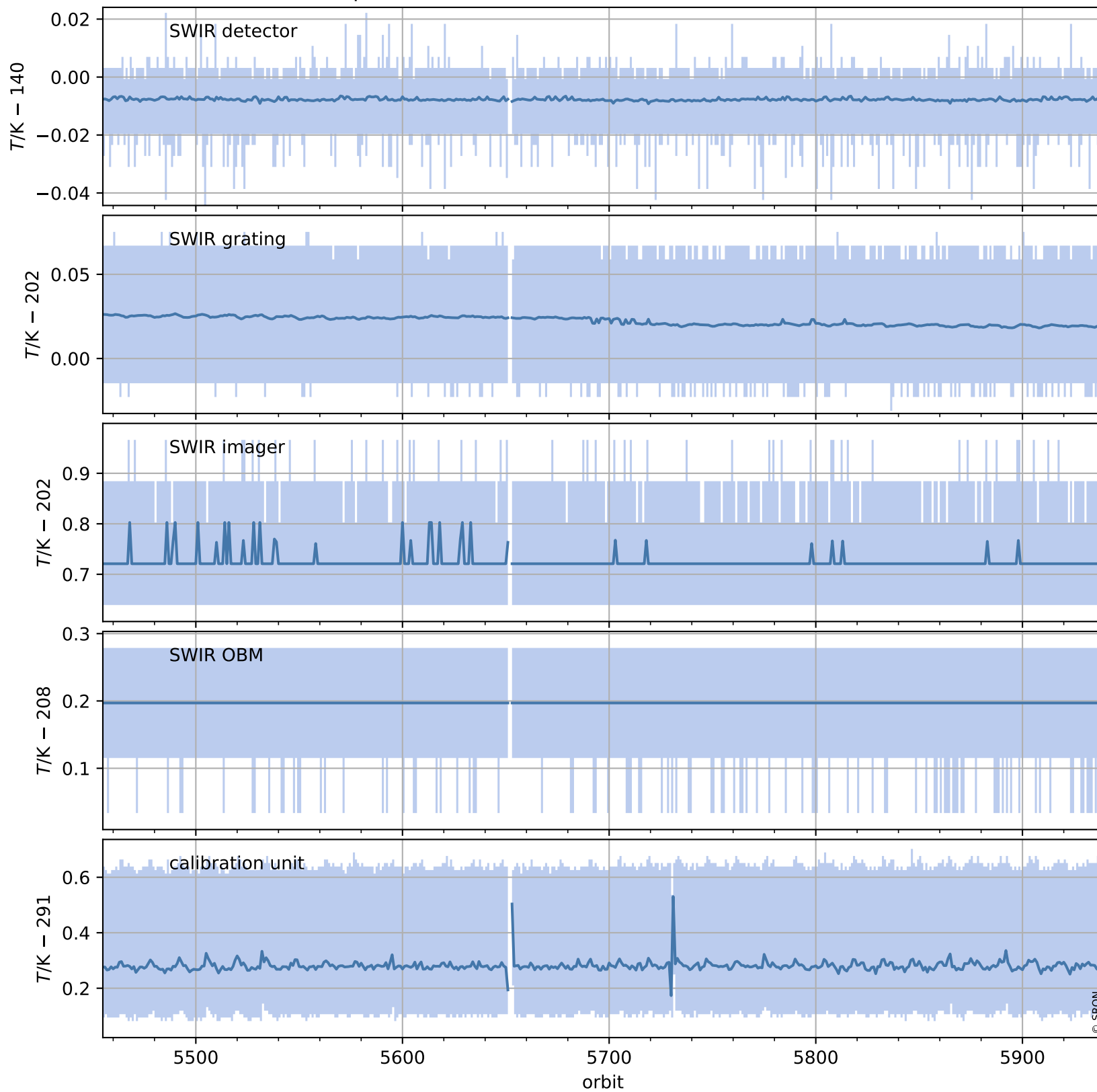
## Temperature of sensors relevant for SWIR (one day)



# Tropomi SWIR housekeeping data

orbits : [5455, 5939]  
coverage : 2018-11-01 / 2018-12-06  
created : 2023-08-21T08:38:12

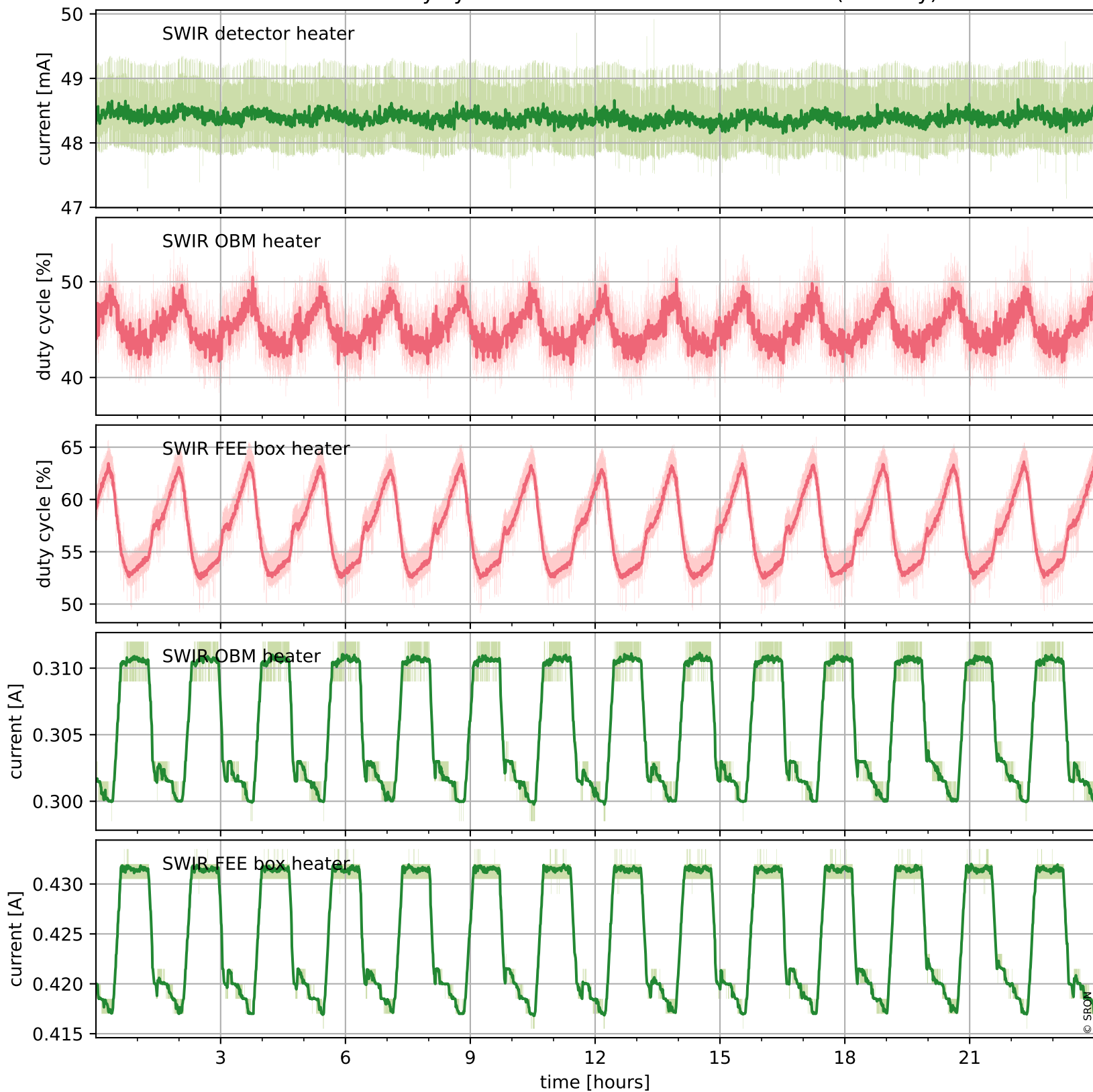
## Temperature of sensors relevant for SWIR (last month)



# Tropomi SWIR housekeeping data

orbits : [5925, 5939]  
coverage : 2018-12-05 / 2018-12-06  
created : 2023-08-21T08:38:13

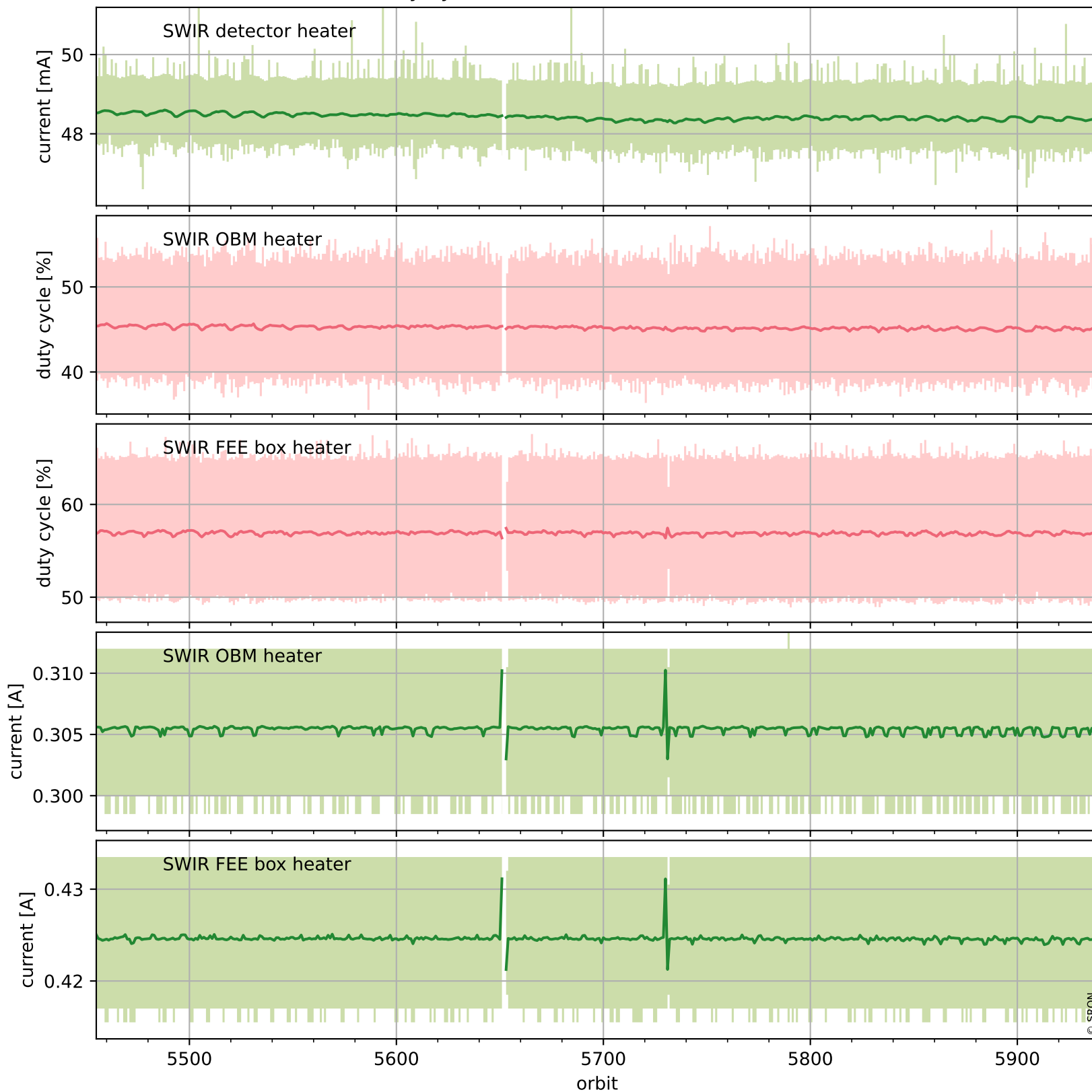
## Current and duty cycle of 3 heaters relevant for SWIR (one day)



# Tropomi SWIR housekeeping data

orbits : [5455, 5939]  
coverage : 2018-11-01 / 2018-12-06  
created : 2023-08-21T08:38:13

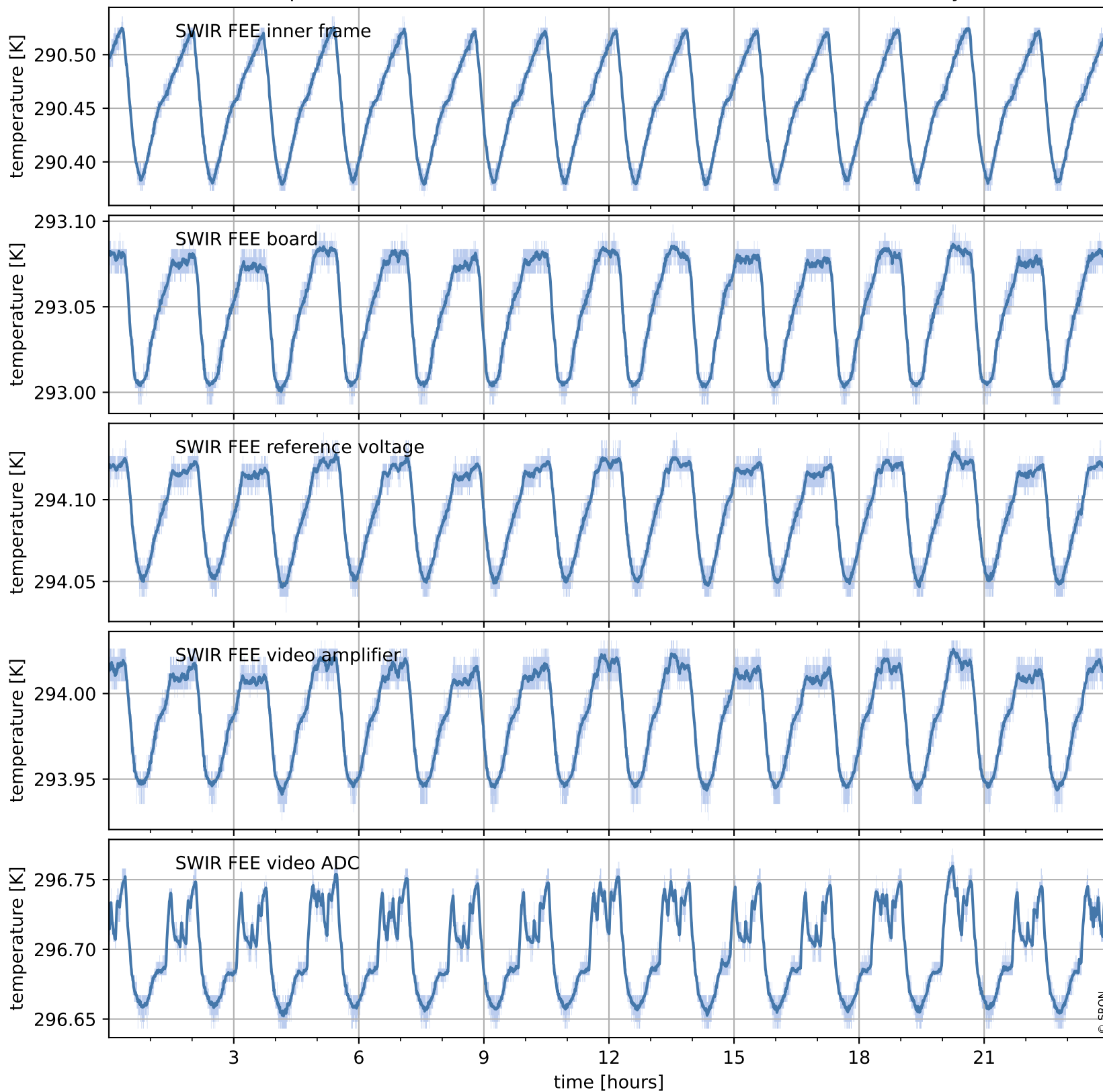
## Current and duty cycle of 3 heaters relevant for SWIR (last month)



# Tropomi SWIR housekeeping data

orbits : [5925, 5939]  
coverage : 2018-12-05 / 2018-12-06  
created : 2023-08-21T08:38:14

## Temperature of sensors at the SWIR front-end electronics (one day)



# Tropomi SWIR housekeeping data

orbits : [5455, 5939]  
coverage : 2018-11-01 / 2018-12-06  
created : 2023-08-21T08:38:14

## Temperature of sensors at the SWIR front-end electronics (last month)

