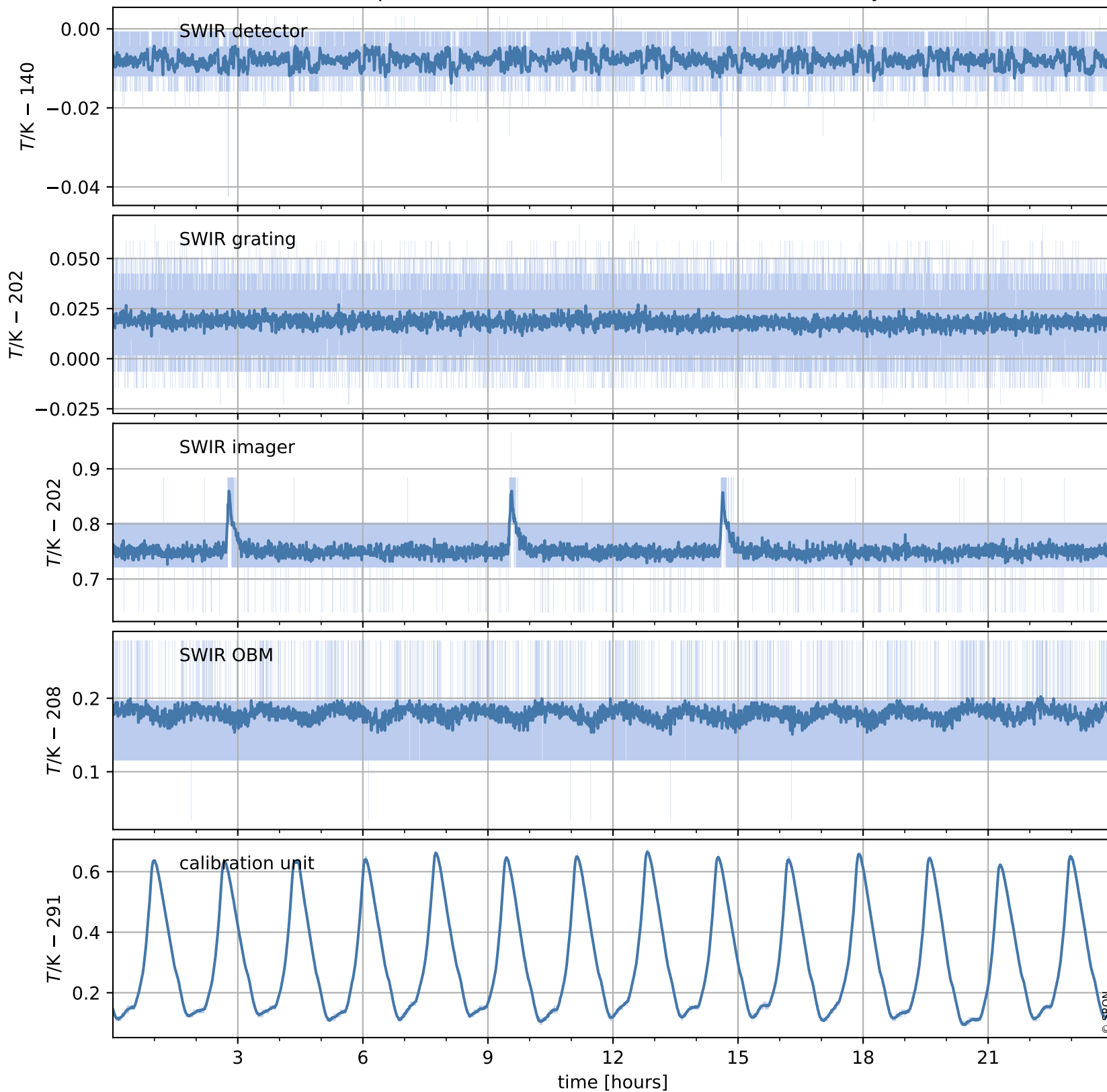


# Tropomi SWIR housekeeping data

orbits : [6025, 6038]  
coverage : 2018-12-12 / 2018-12-13  
created : 2023-08-21T08:38:28

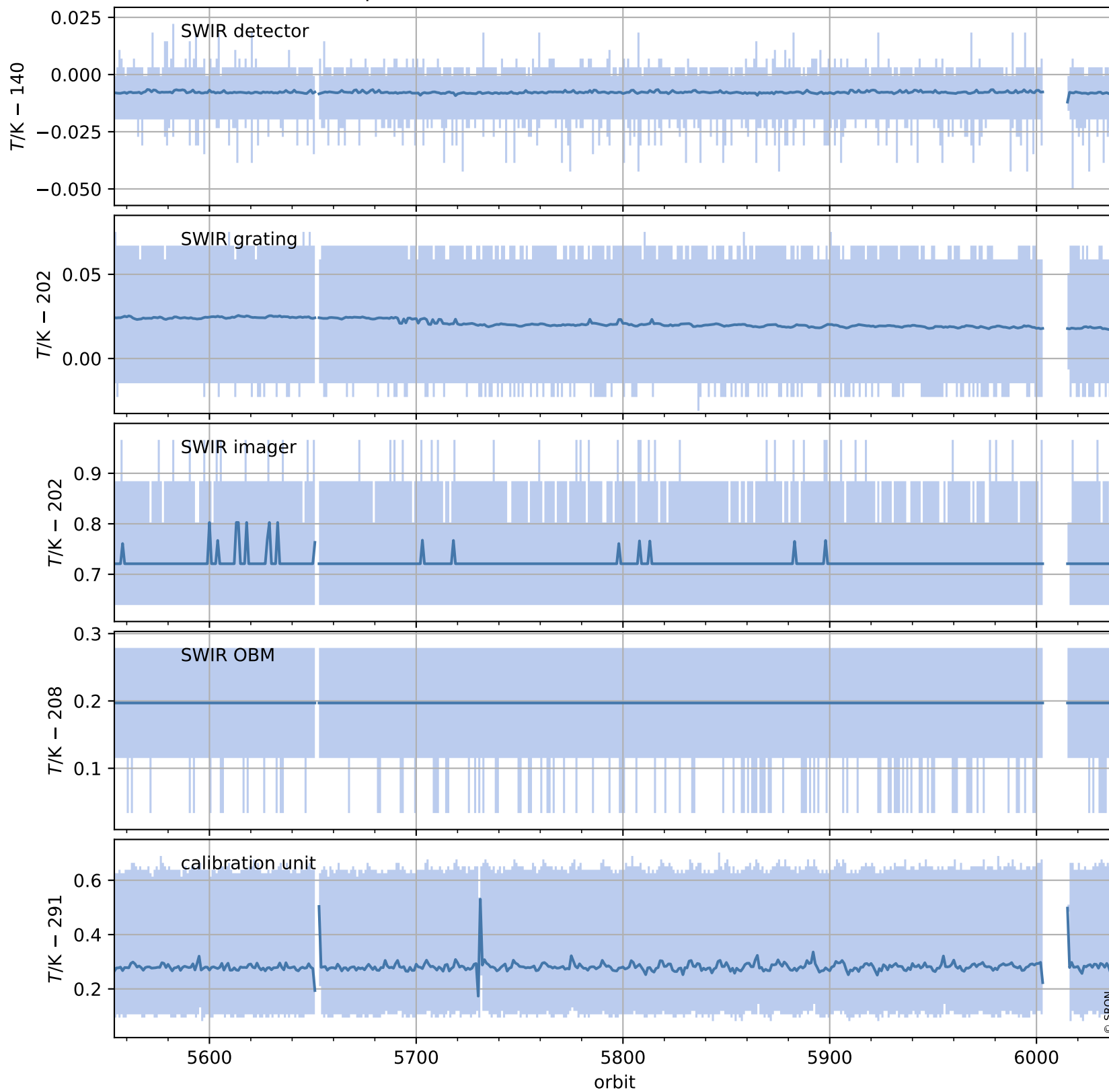
## Temperature of sensors relevant for SWIR (one day)



# Tropomi SWIR housekeeping data

orbits : [5554, 6038]  
coverage : 2018-11-08 / 2018-12-13  
created : 2023-08-21T08:38:29

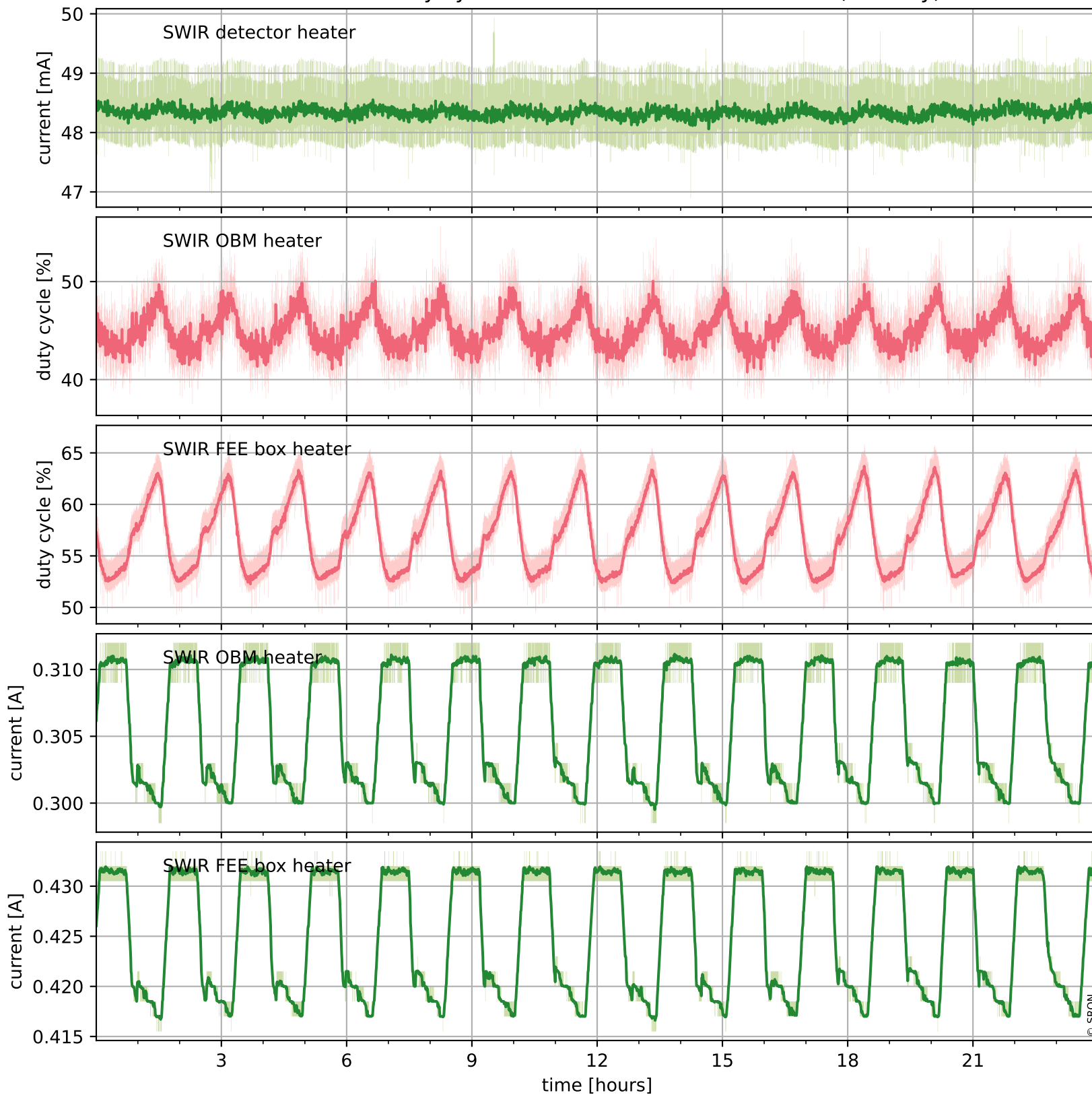
## Temperature of sensors relevant for SWIR (last month)



# Tropomi SWIR housekeeping data

orbits : [6025, 6038]  
coverage : 2018-12-12 / 2018-12-13  
created : 2023-08-21T08:38:29

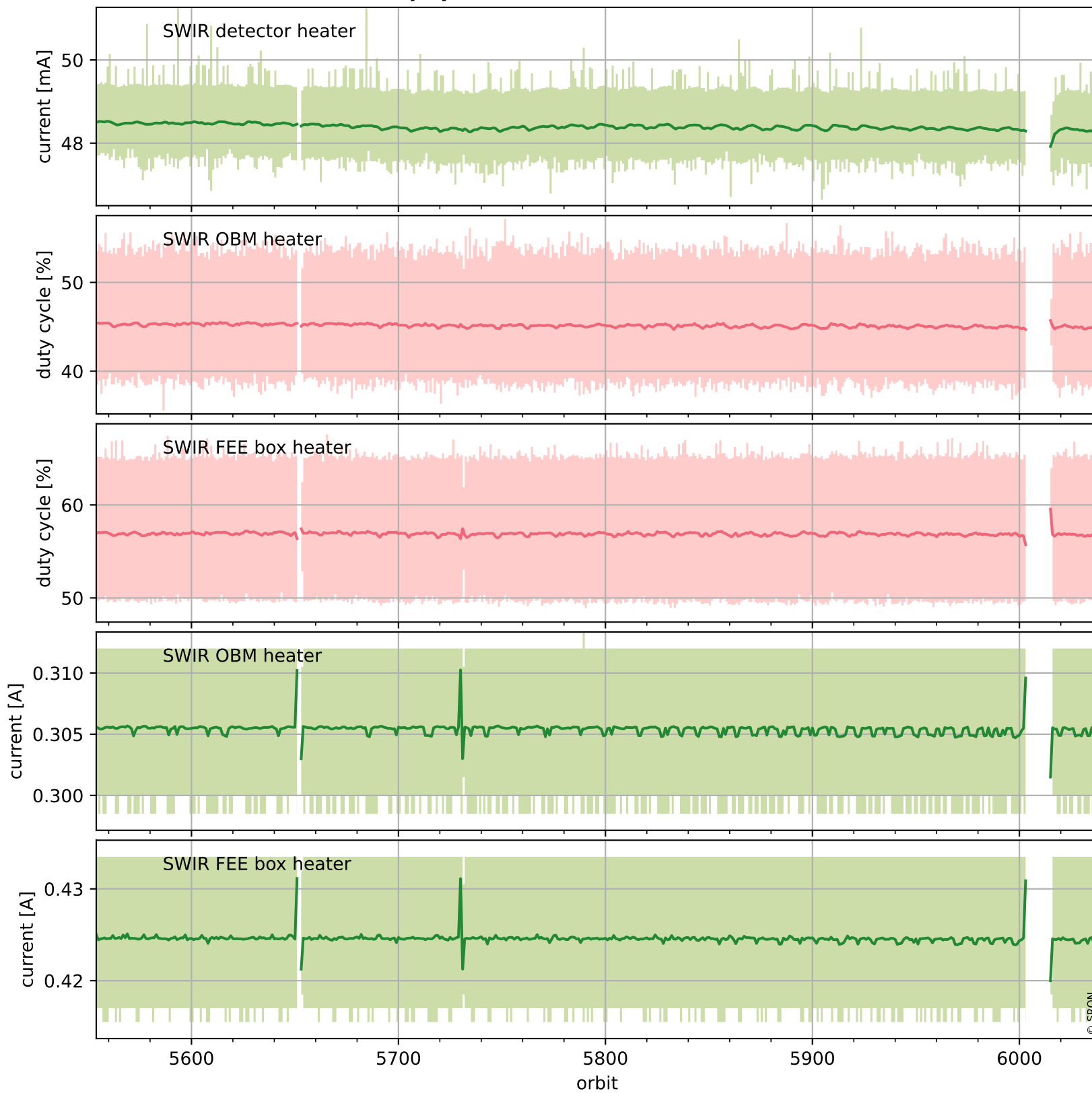
## Current and duty cycle of 3 heaters relevant for SWIR (one day)



# Tropomi SWIR housekeeping data

orbits : [5554, 6038]  
coverage : 2018-11-08 / 2018-12-13  
created : 2023-08-21T08:38:30

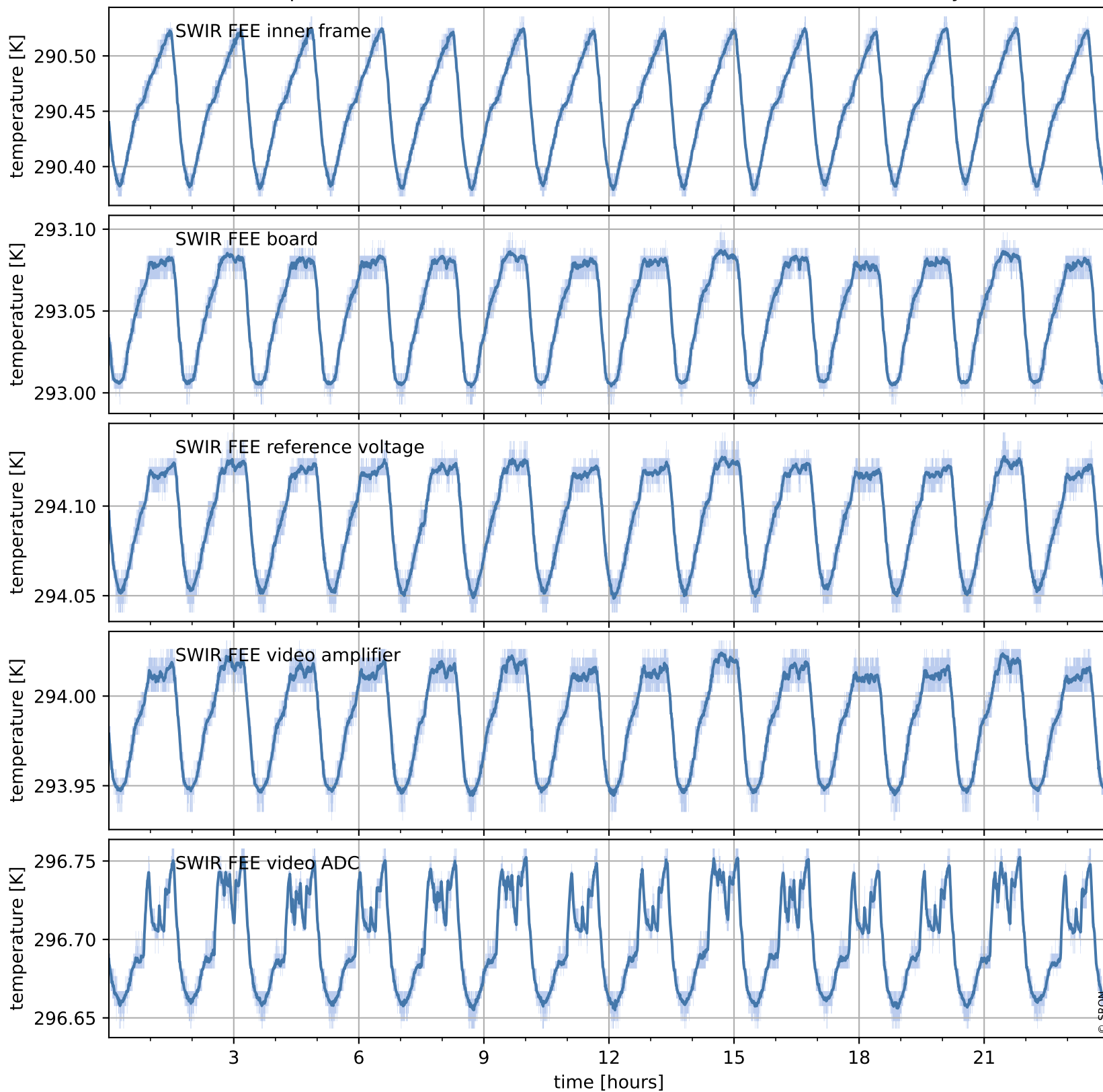
## Current and duty cycle of 3 heaters relevant for SWIR (last month)



# Tropomi SWIR housekeeping data

orbits : [6025, 6038]  
coverage : 2018-12-12 / 2018-12-13  
created : 2023-08-21T08:38:30

## Temperature of sensors at the SWIR front-end electronics (one day)



# Tropomi SWIR housekeeping data

orbits : [5554, 6038]  
coverage : 2018-11-08 / 2018-12-13  
created : 2023-08-21T08:38:30

## Temperature of sensors at the SWIR front-end electronics (last month)

