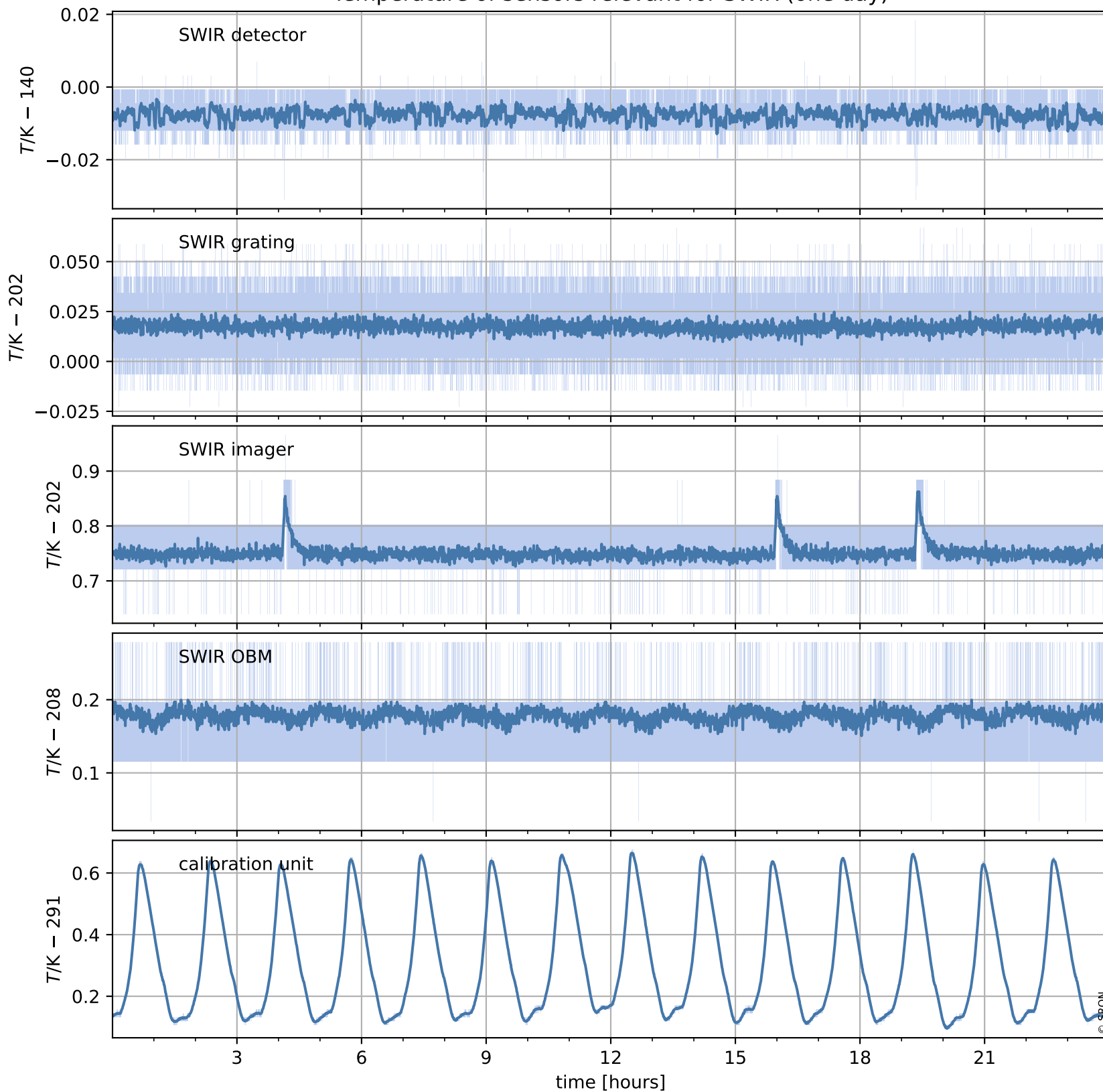


# Tropomi SWIR housekeeping data

orbits : [6039, 6052]  
coverage : 2018-12-13 / 2018-12-14  
created : 2023-08-21T08:38:31

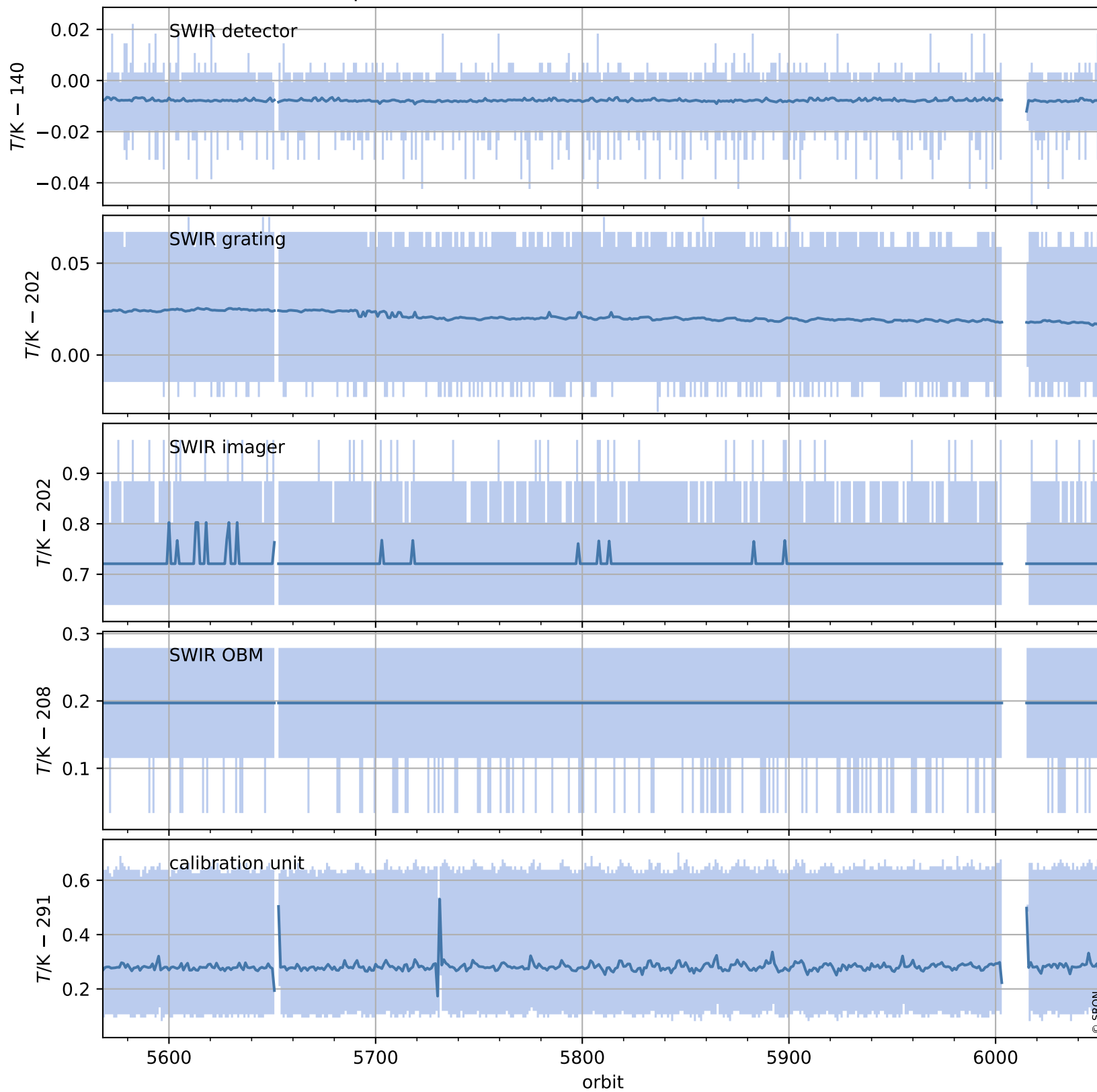
## Temperature of sensors relevant for SWIR (one day)



# Tropomi SWIR housekeeping data

orbits : [5568, 6052]  
coverage : 2018-11-09 / 2018-12-14  
created : 2023-08-21T08:38:31

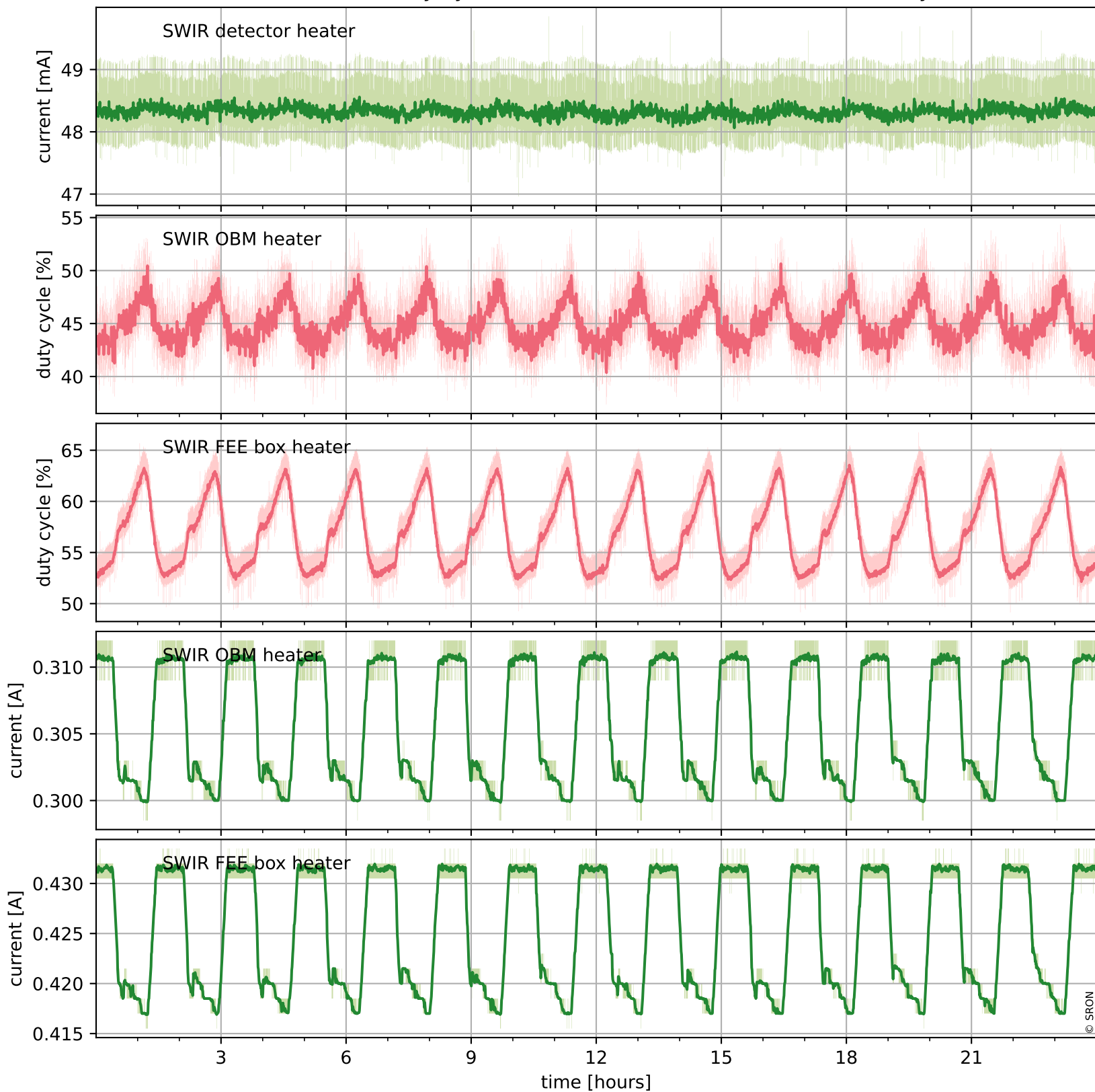
## Temperature of sensors relevant for SWIR (last month)



# Tropomi SWIR housekeeping data

orbits : [6039, 6052]  
coverage : 2018-12-13 / 2018-12-14  
created : 2023-08-21T08:38:32

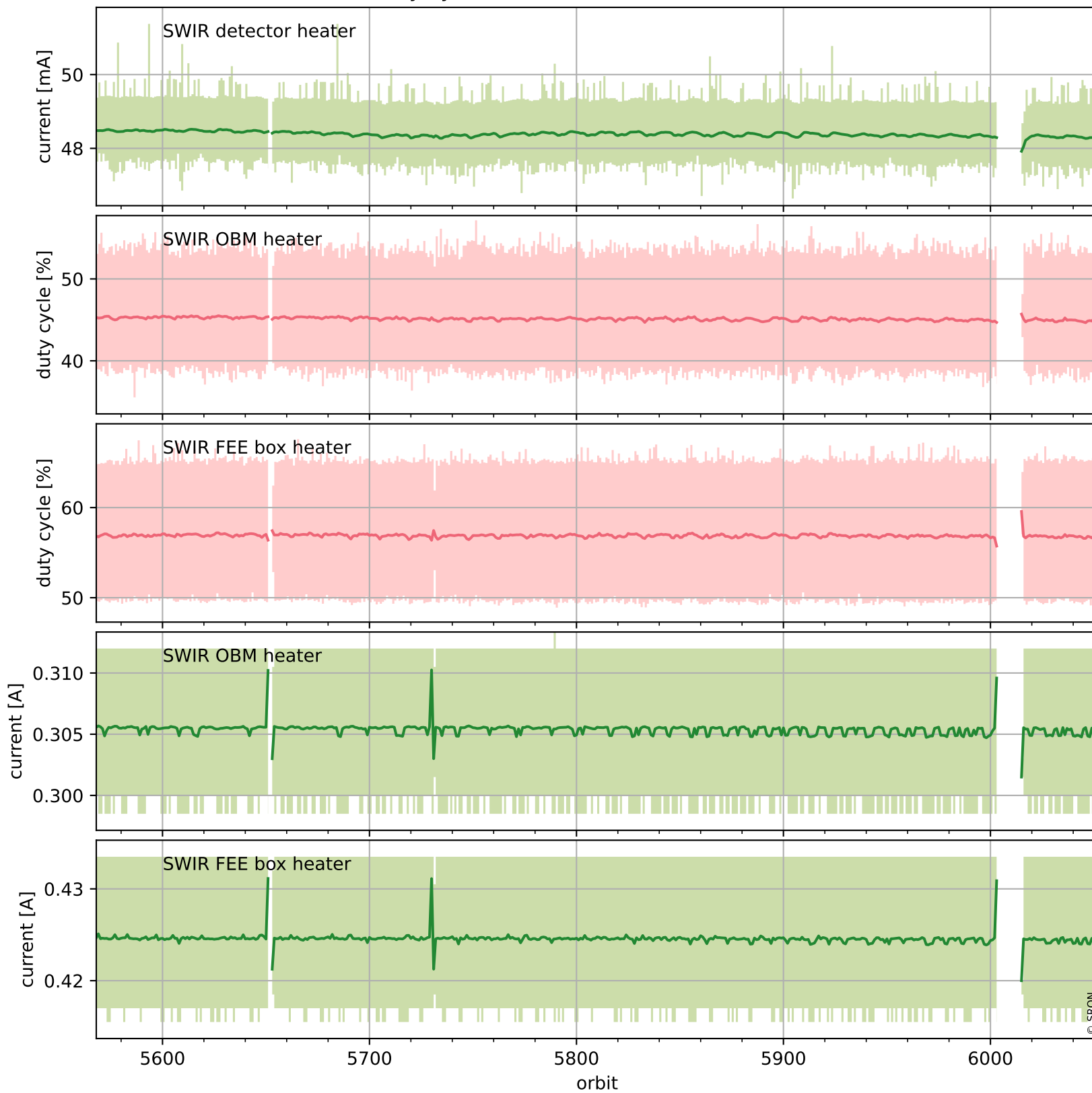
## Current and duty cycle of 3 heaters relevant for SWIR (one day)



# Tropomi SWIR housekeeping data

orbits : [5568, 6052]  
coverage : 2018-11-09 / 2018-12-14  
created : 2023-08-21T08:38:32

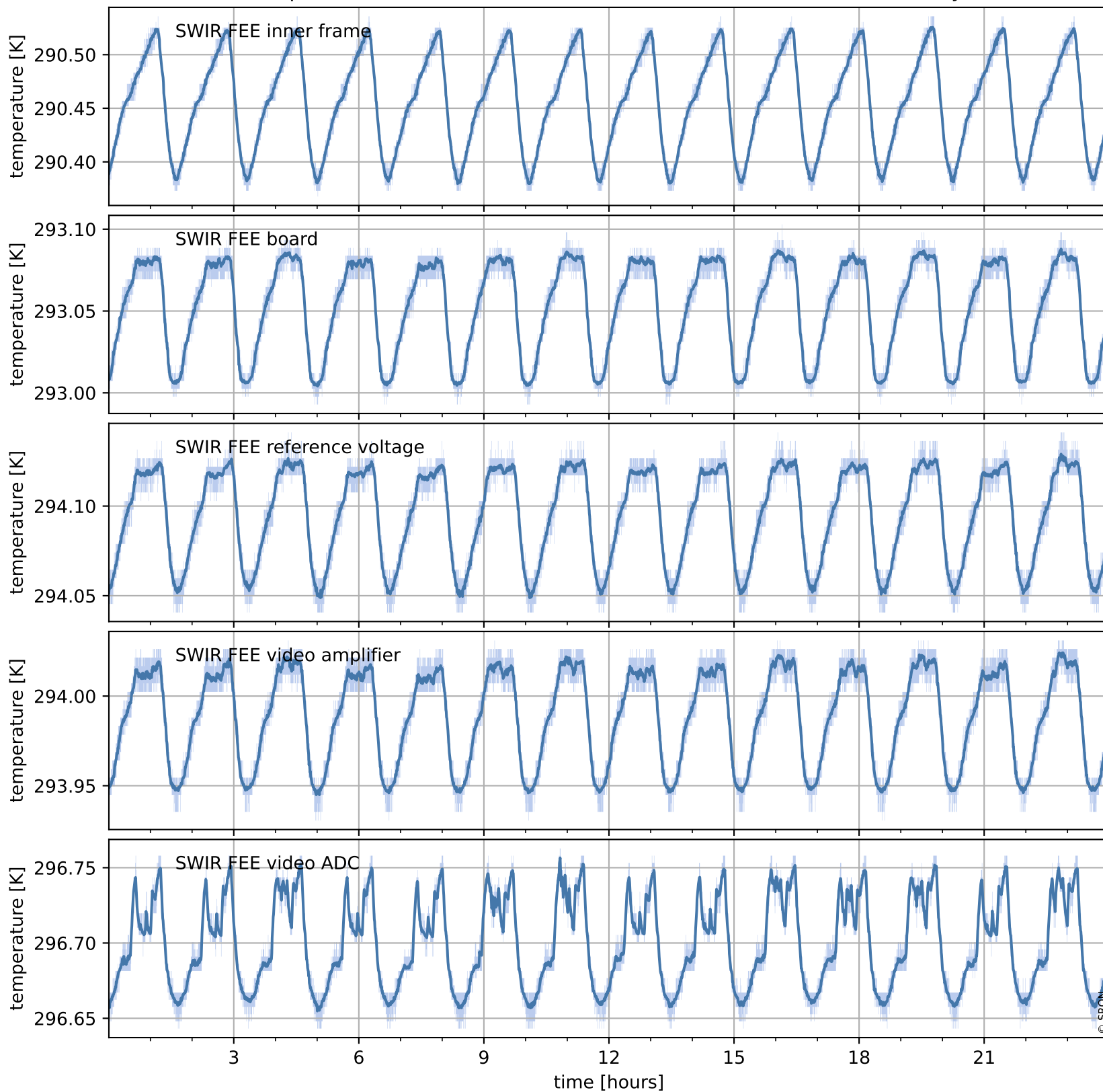
## Current and duty cycle of 3 heaters relevant for SWIR (last month)



# Tropomi SWIR housekeeping data

orbits : [6039, 6052]  
coverage : 2018-12-13 / 2018-12-14  
created : 2023-08-21T08:38:32

## Temperature of sensors at the SWIR front-end electronics (one day)



# Tropomi SWIR housekeeping data

orbits : [5568, 6052]  
coverage : 2018-11-09 / 2018-12-14  
created : 2023-08-21T08:38:33

## Temperature of sensors at the SWIR front-end electronics (last month)

