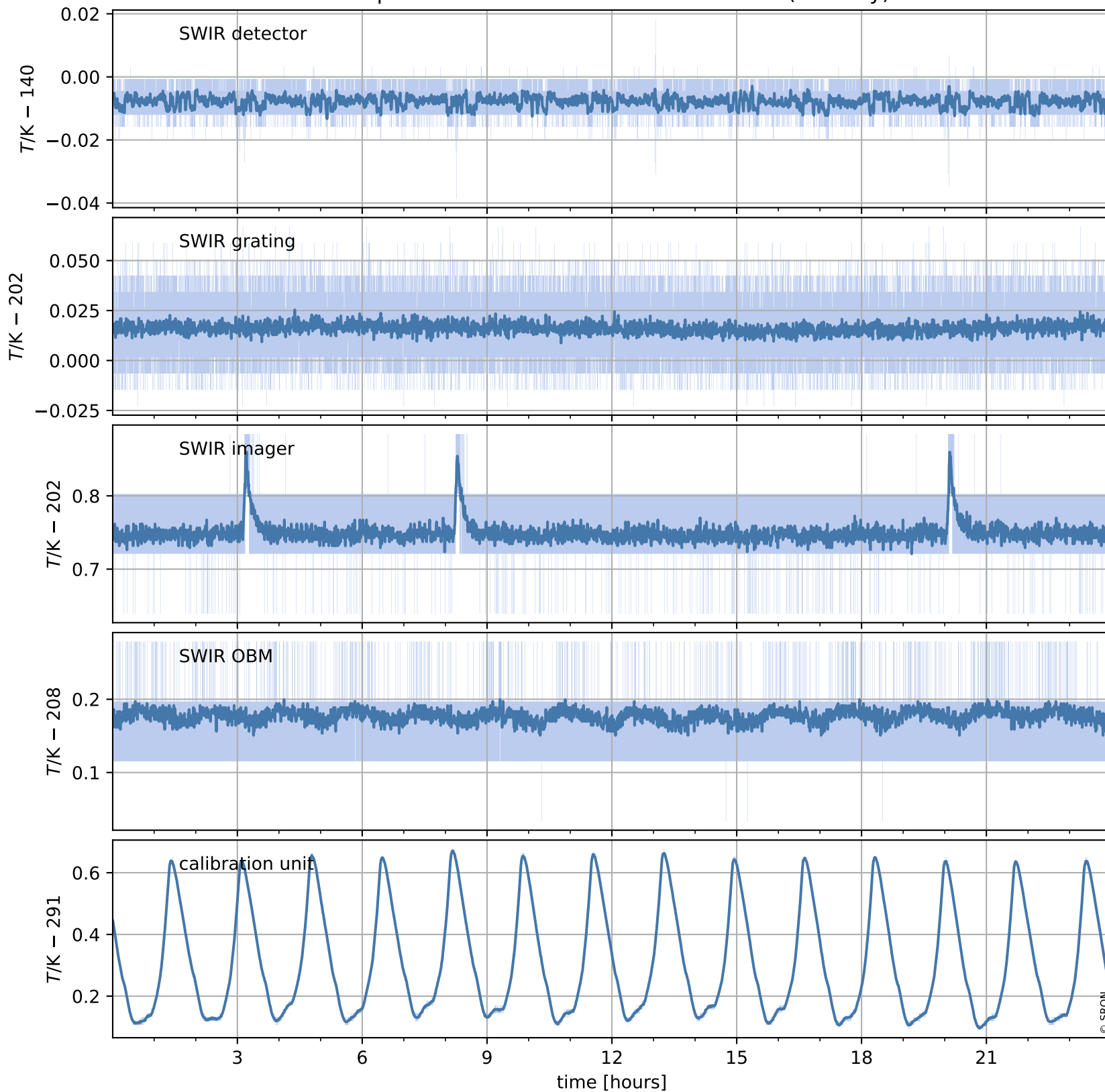


# Tropomi SWIR housekeeping data

orbits : [6082, 6095]  
coverage : 2018-12-16 / 2018-12-17  
created : 2023-08-21T08:38:38

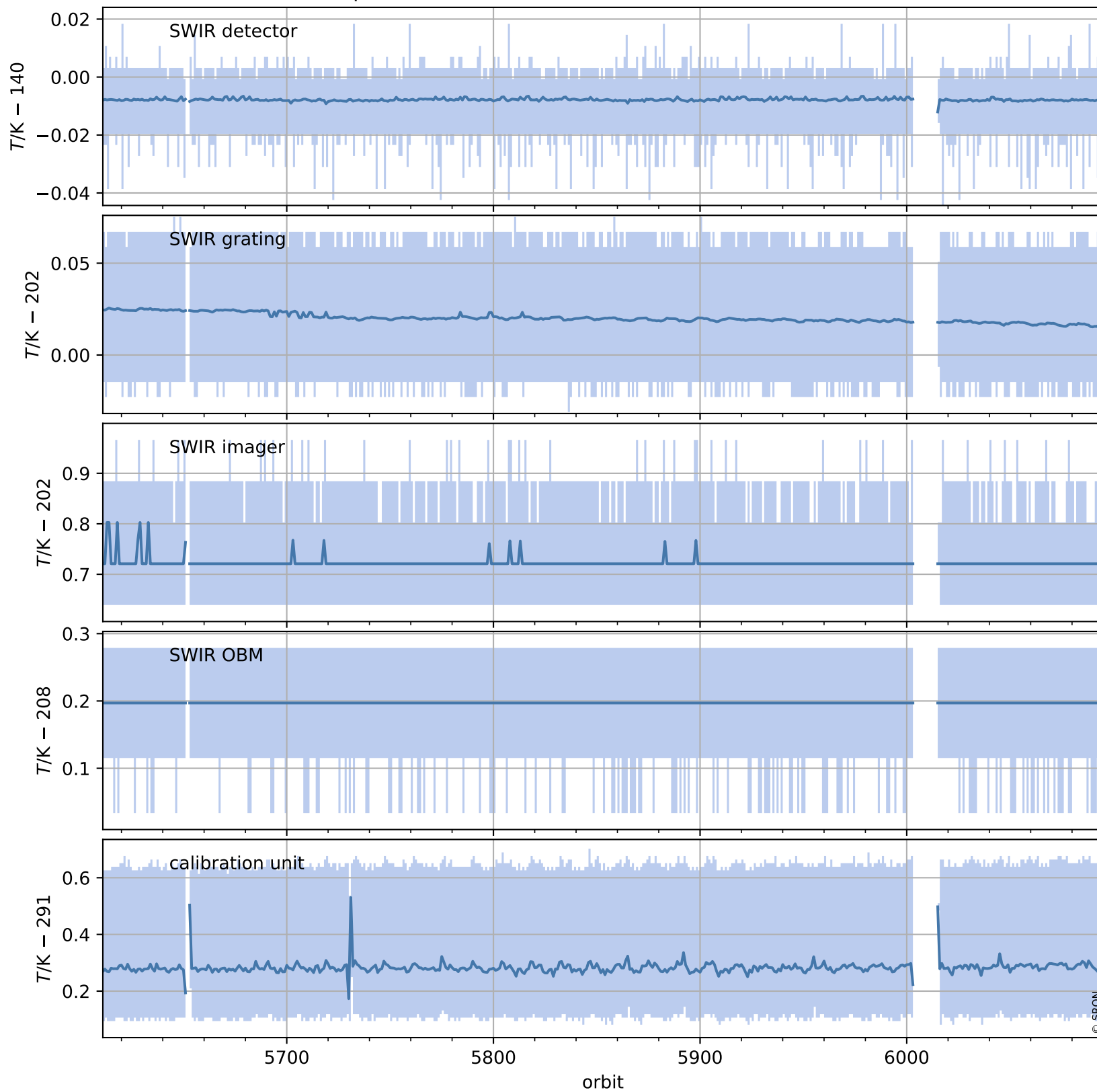
## Temperature of sensors relevant for SWIR (one day)



# Tropomi SWIR housekeeping data

orbits : [5611, 6095]  
coverage : 2018-11-12 / 2018-12-17  
created : 2023-08-21T08:38:38

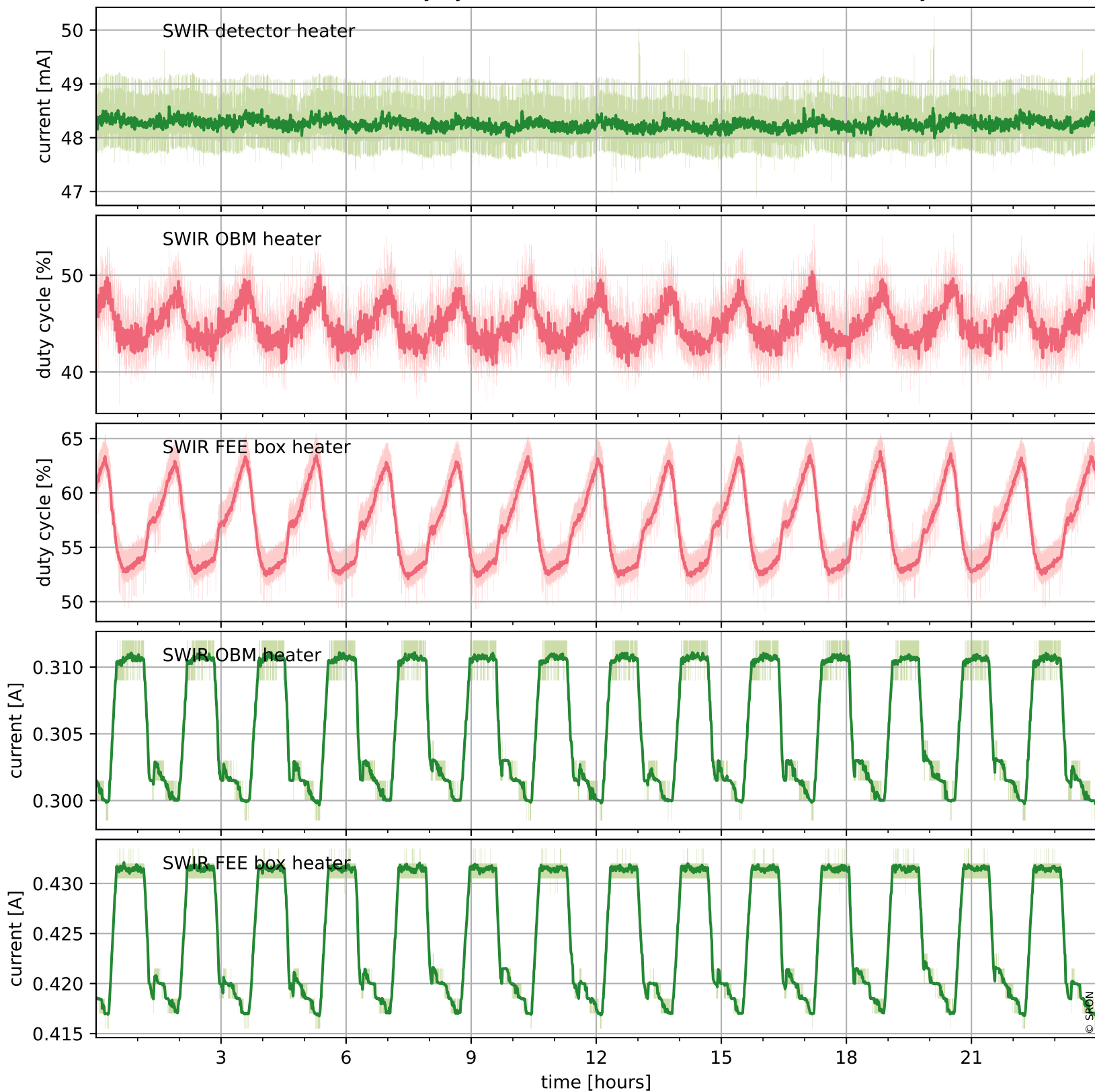
## Temperature of sensors relevant for SWIR (last month)



# Tropomi SWIR housekeeping data

orbits : [6082, 6095]  
coverage : 2018-12-16 / 2018-12-17  
created : 2023-08-21T08:38:39

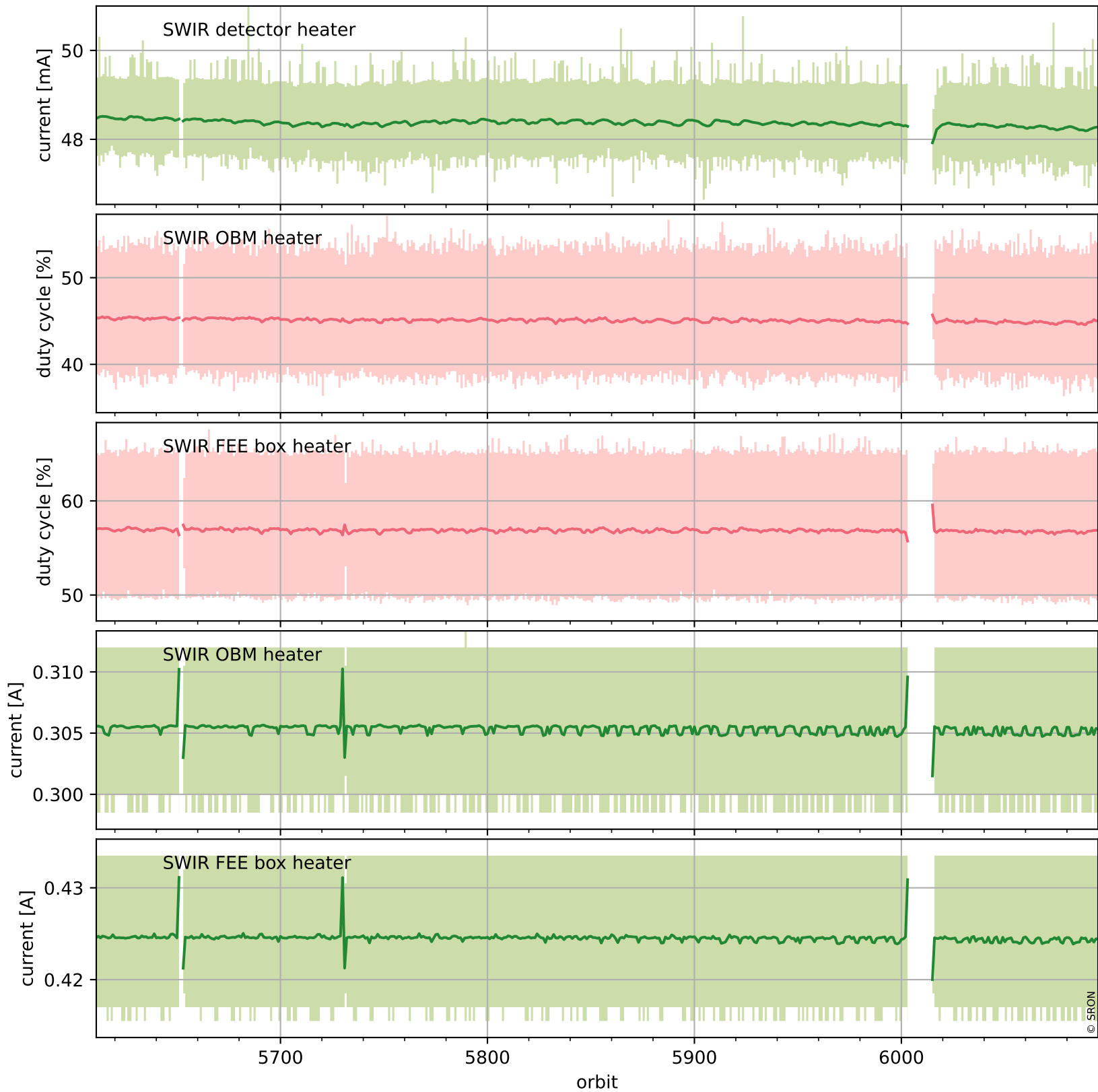
## Current and duty cycle of 3 heaters relevant for SWIR (one day)



# Tropomi SWIR housekeeping data

orbits : [5611, 6095]  
coverage : 2018-11-12 / 2018-12-17  
created : 2023-08-21T08:38:39

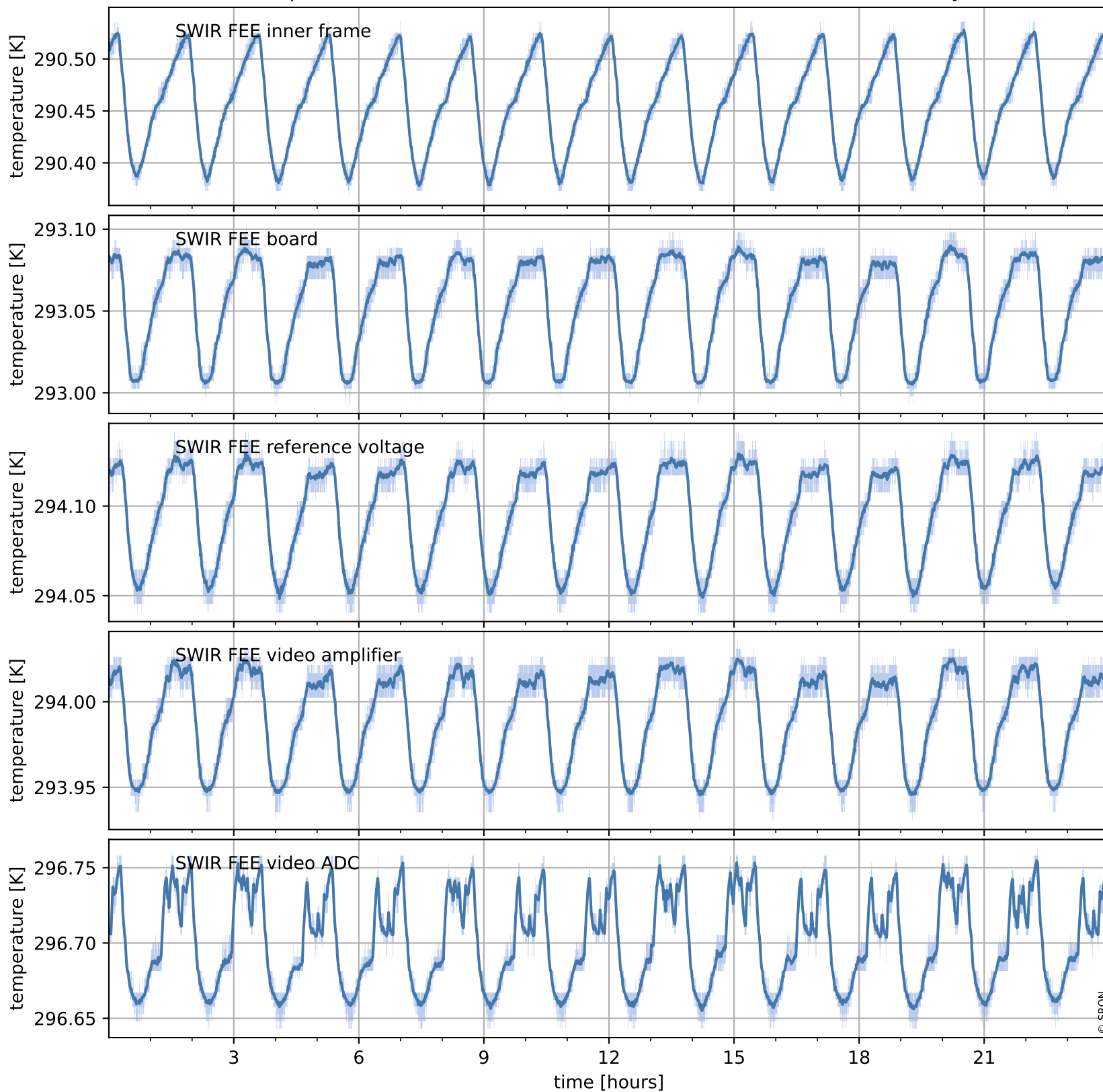
## Current and duty cycle of 3 heaters relevant for SWIR (last month)



# Tropomi SWIR housekeeping data

orbits : [6082, 6095]  
coverage : 2018-12-16 / 2018-12-17  
created : 2023-08-21T08:38:40

## Temperature of sensors at the SWIR front-end electronics (one day)



# Tropomi SWIR housekeeping data

orbits : [5611, 6095]  
coverage : 2018-11-12 / 2018-12-17  
created : 2023-08-21T08:38:40

## Temperature of sensors at the SWIR front-end electronics (last month)

