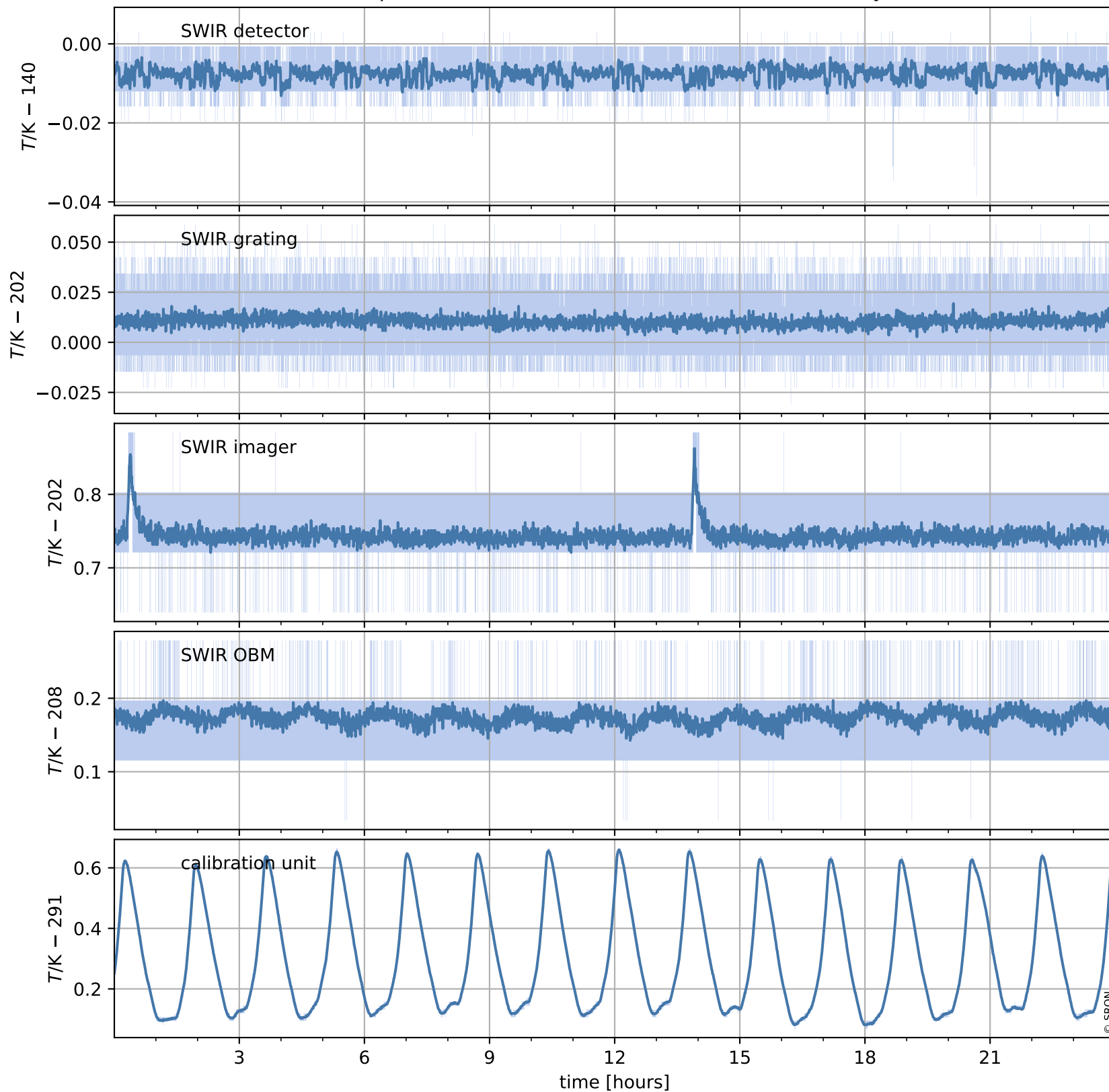


Tropomi SWIR housekeeping data

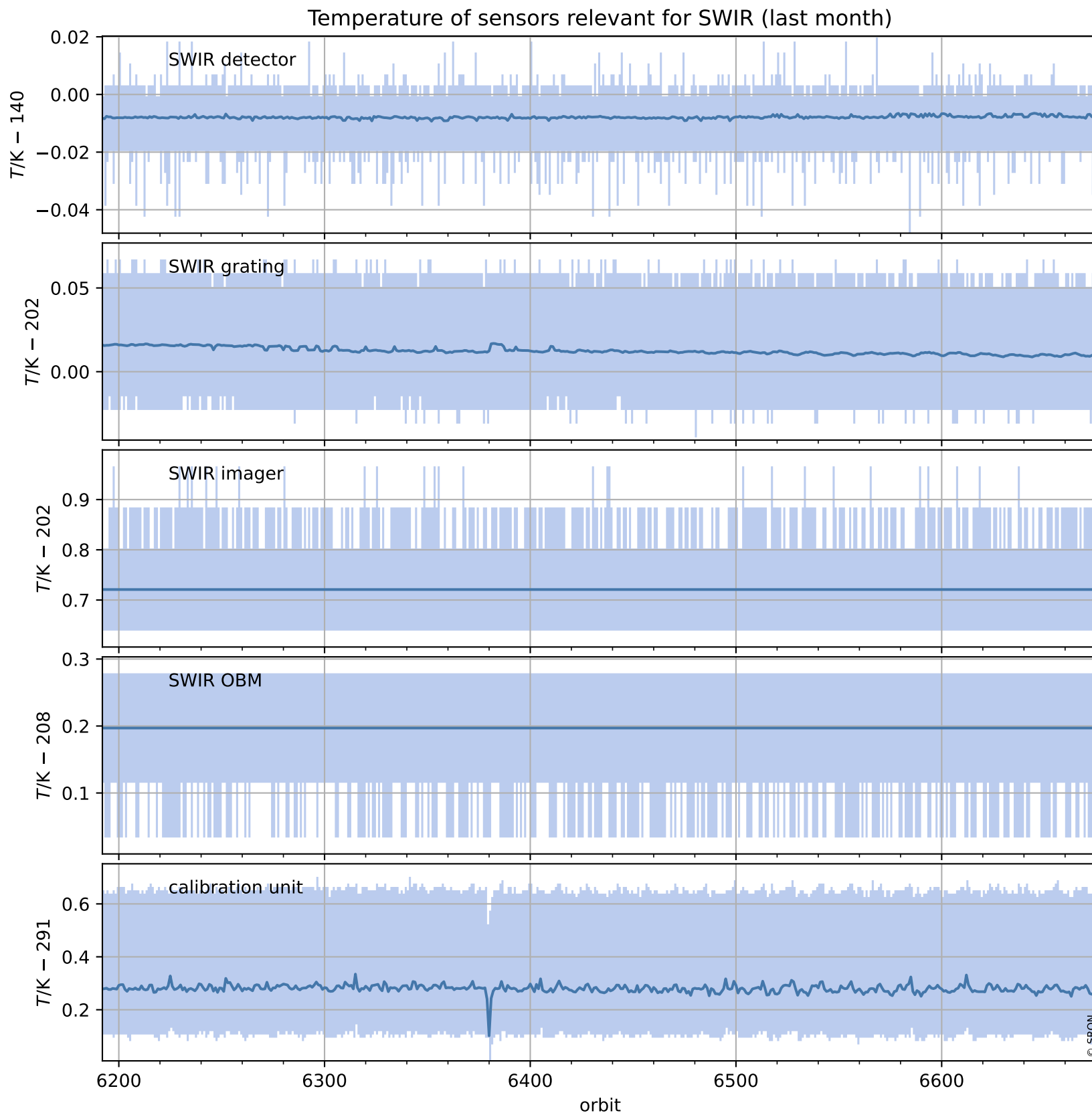
orbits : [6663, 6676]
coverage : 2019-01-26 / 2019-01-27
created : 2023-08-21T08:40:15

Temperature of sensors relevant for SWIR (one day)



Tropomi SWIR housekeeping data

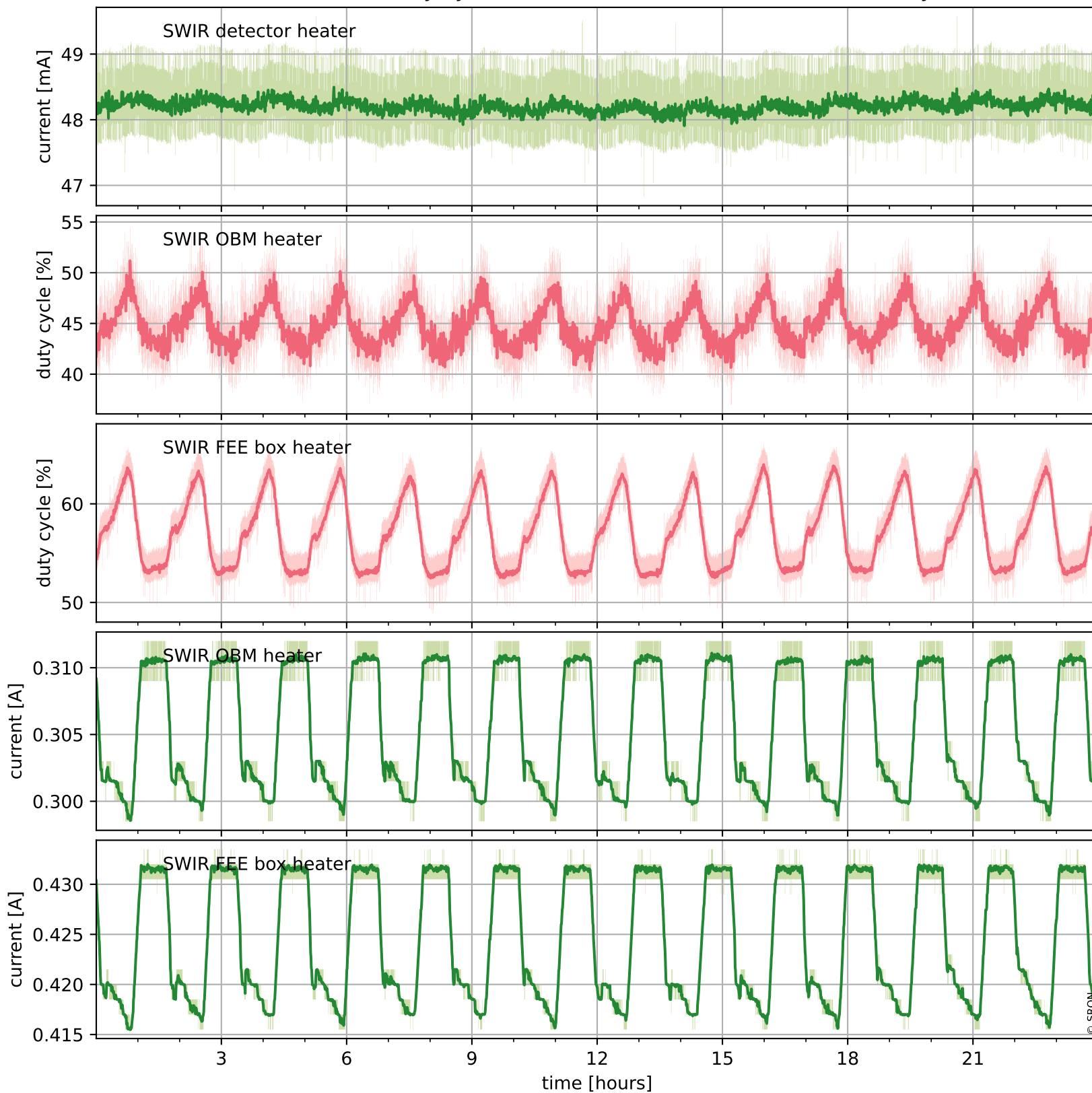
orbits : [6192, 6676]
coverage : 2018-12-23 / 2019-01-27
created : 2023-08-21T08:40:15



Tropomi SWIR housekeeping data

orbits : [6663, 6676]
coverage : 2019-01-26 / 2019-01-27
created : 2023-08-21T08:40:15

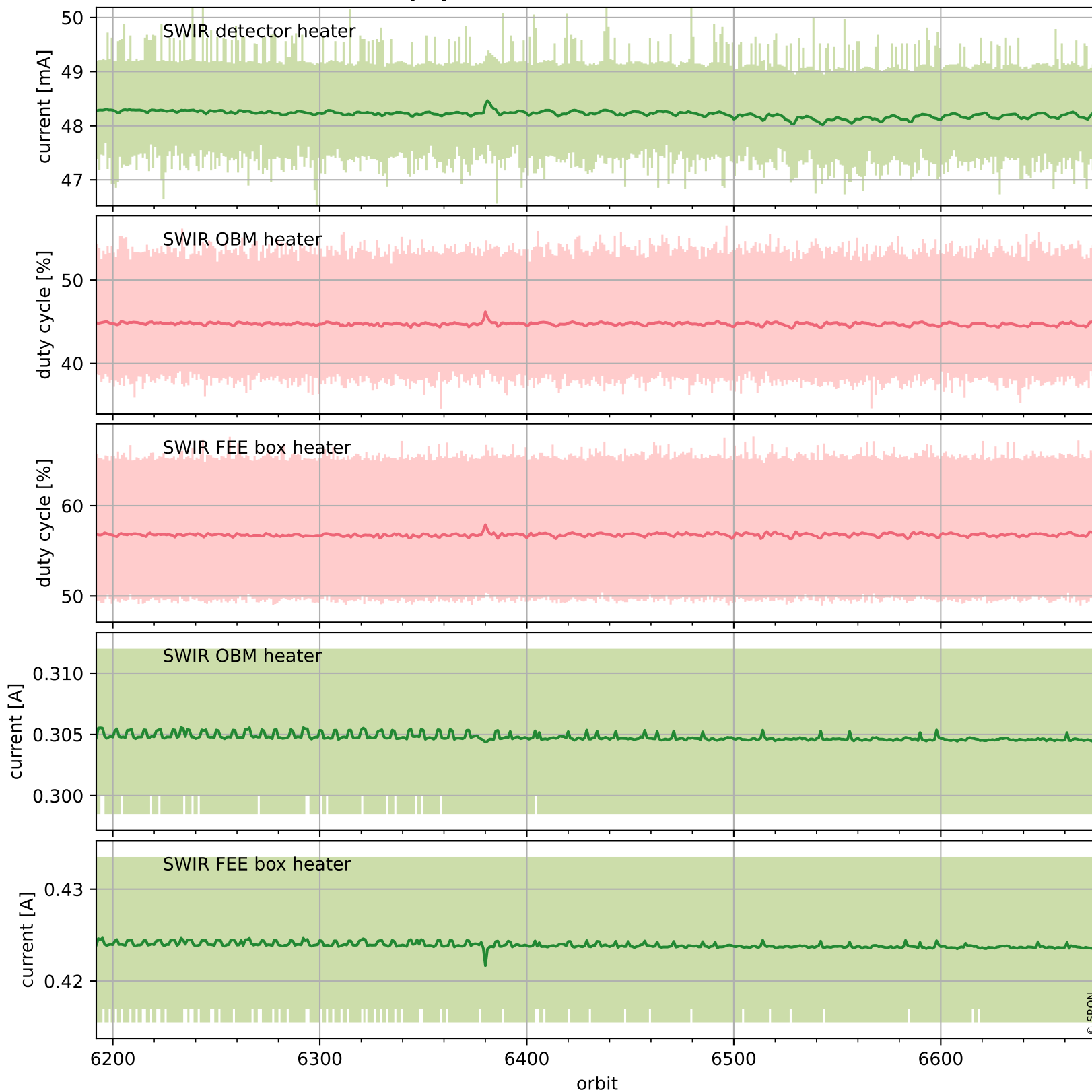
Current and duty cycle of 3 heaters relevant for SWIR (one day)



Tropomi SWIR housekeeping data

orbits : [6192, 6676]
coverage : 2018-12-23 / 2019-01-27
created : 2023-08-21T08:40:16

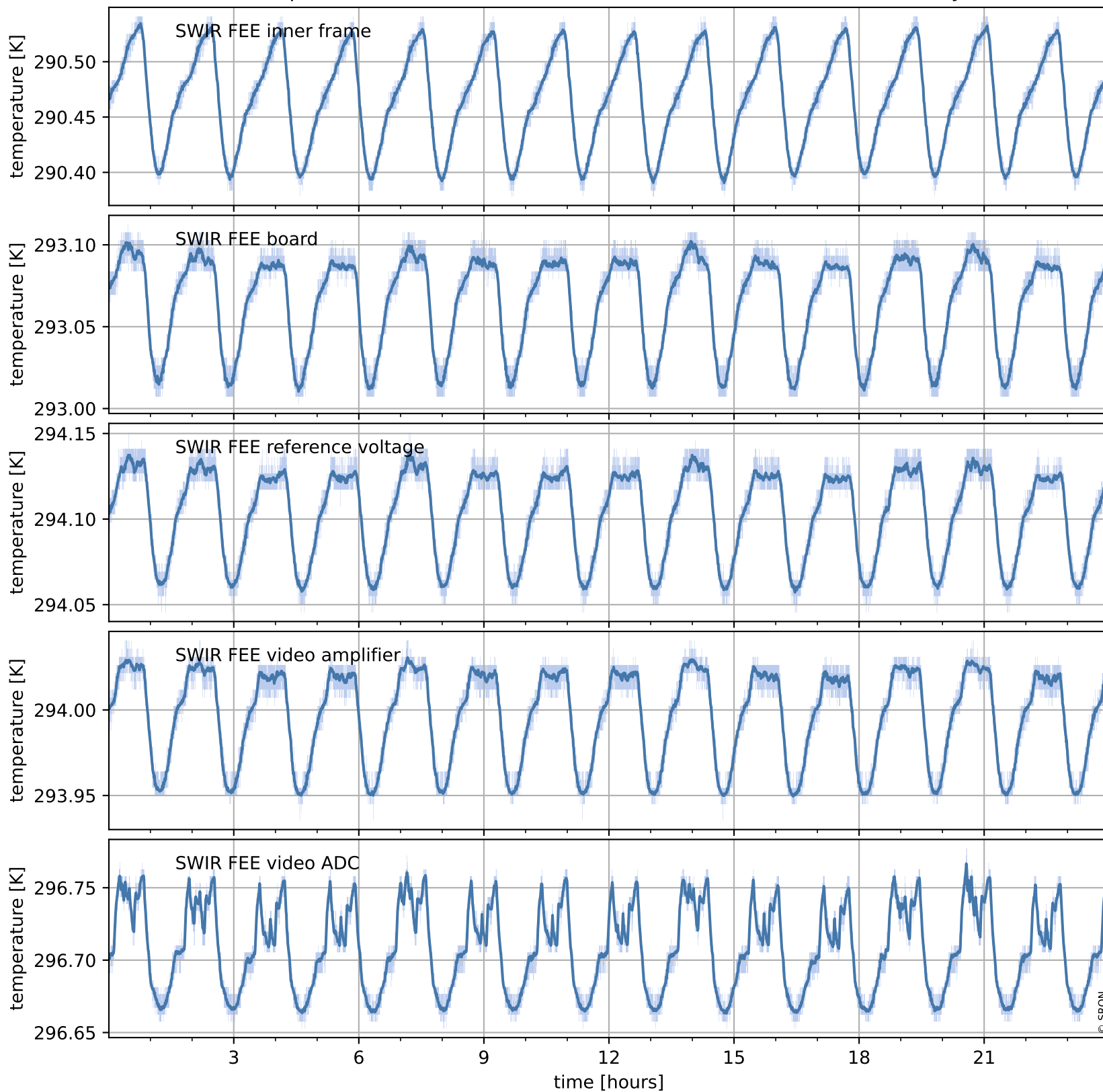
Current and duty cycle of 3 heaters relevant for SWIR (last month)



Tropomi SWIR housekeeping data

orbits : [6663, 6676]
coverage : 2019-01-26 / 2019-01-27
created : 2023-08-21T08:40:16

Temperature of sensors at the SWIR front-end electronics (one day)



Tropomi SWIR housekeeping data

orbits : [6192, 6676]
coverage : 2018-12-23 / 2019-01-27
created : 2023-08-21T08:40:16

Temperature of sensors at the SWIR front-end electronics (last month)

