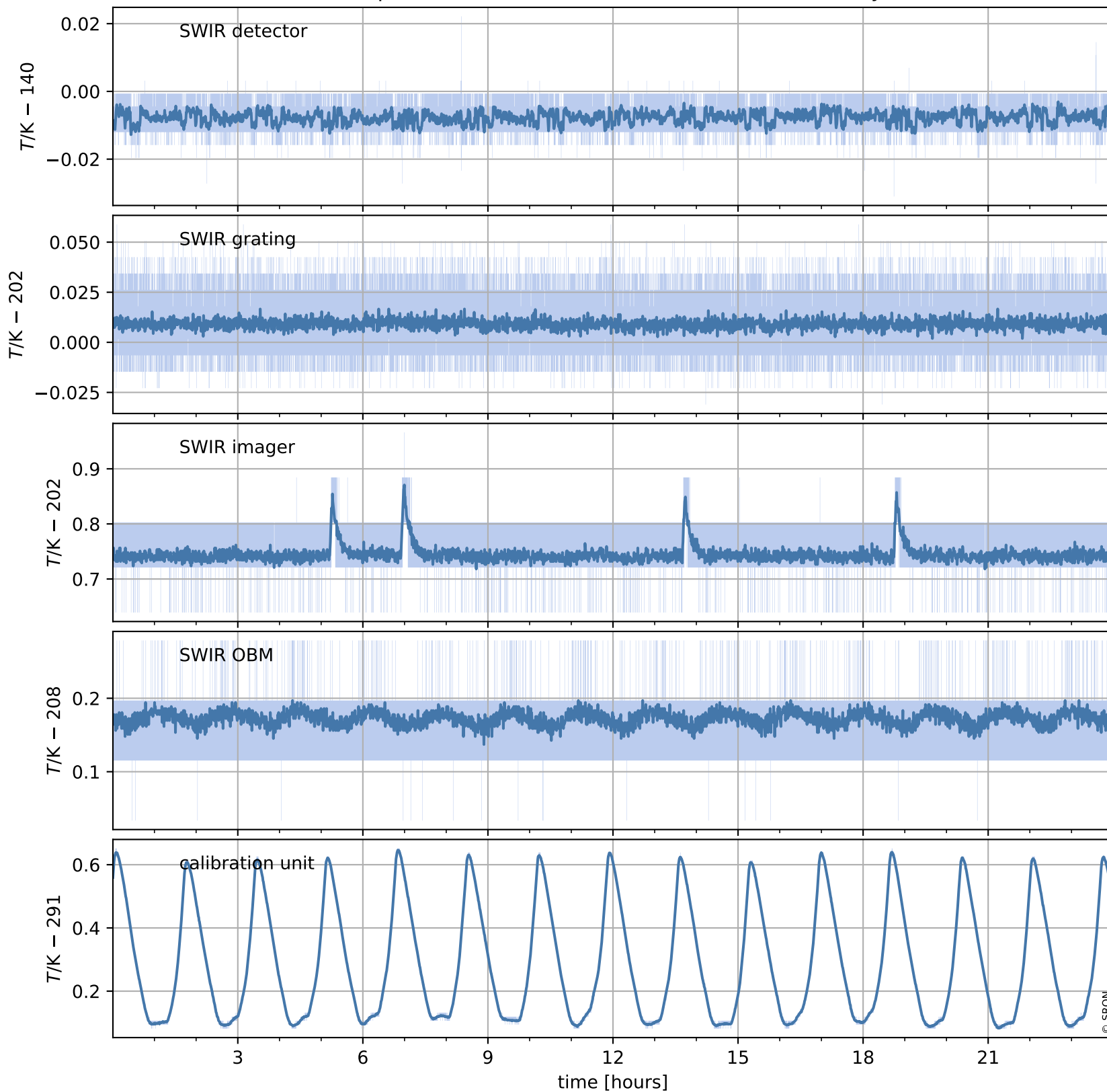


Tropomi SWIR housekeeping data

orbits : [6975, 6989]
coverage : 2019-02-17 / 2019-02-18
created : 2023-08-21T08:41:06

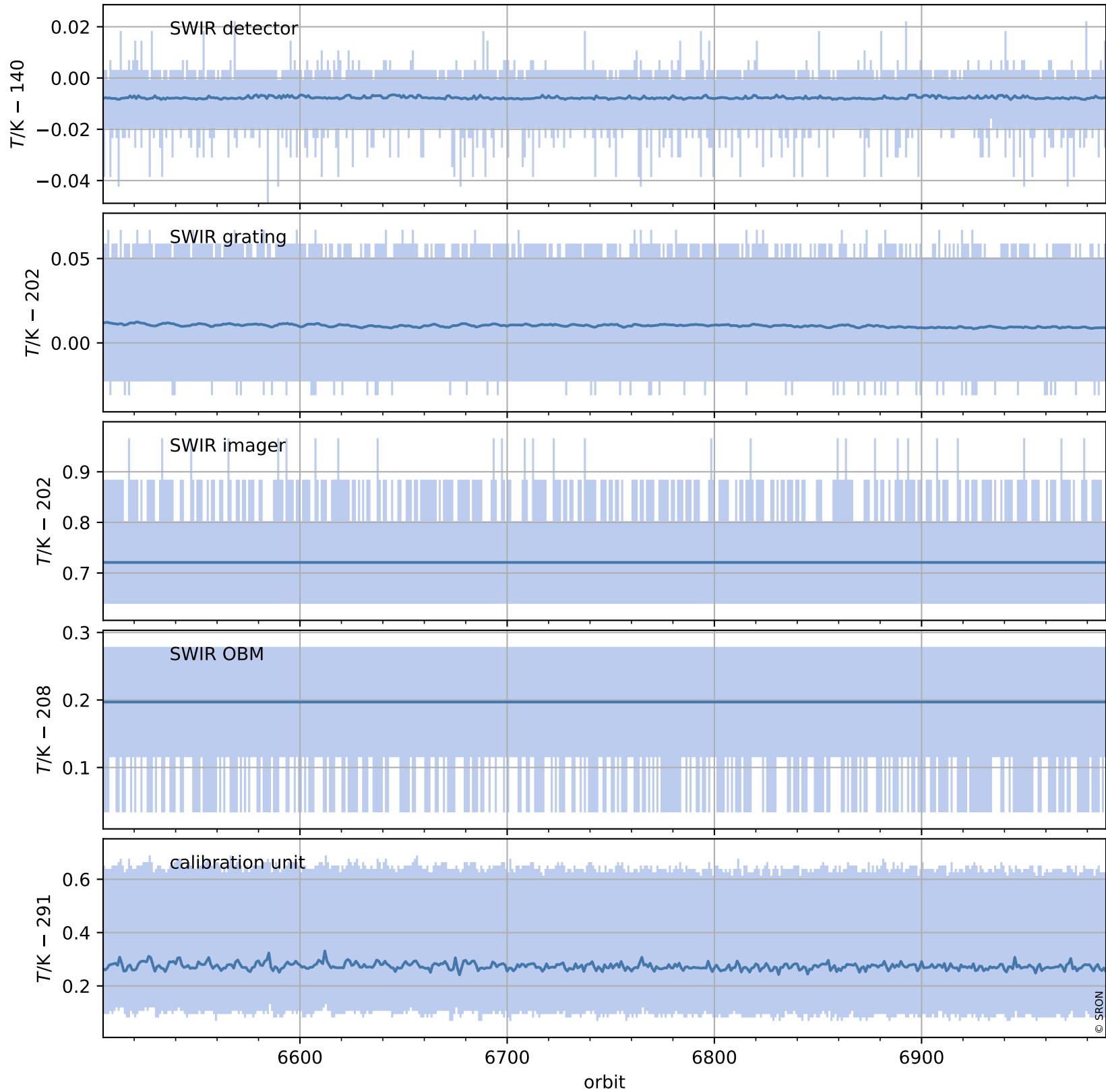
Temperature of sensors relevant for SWIR (one day)



Tropomi SWIR housekeeping data

orbits : [6505, 6989]
coverage : 2019-01-14 / 2019-02-18
created : 2023-08-21T08:41:06

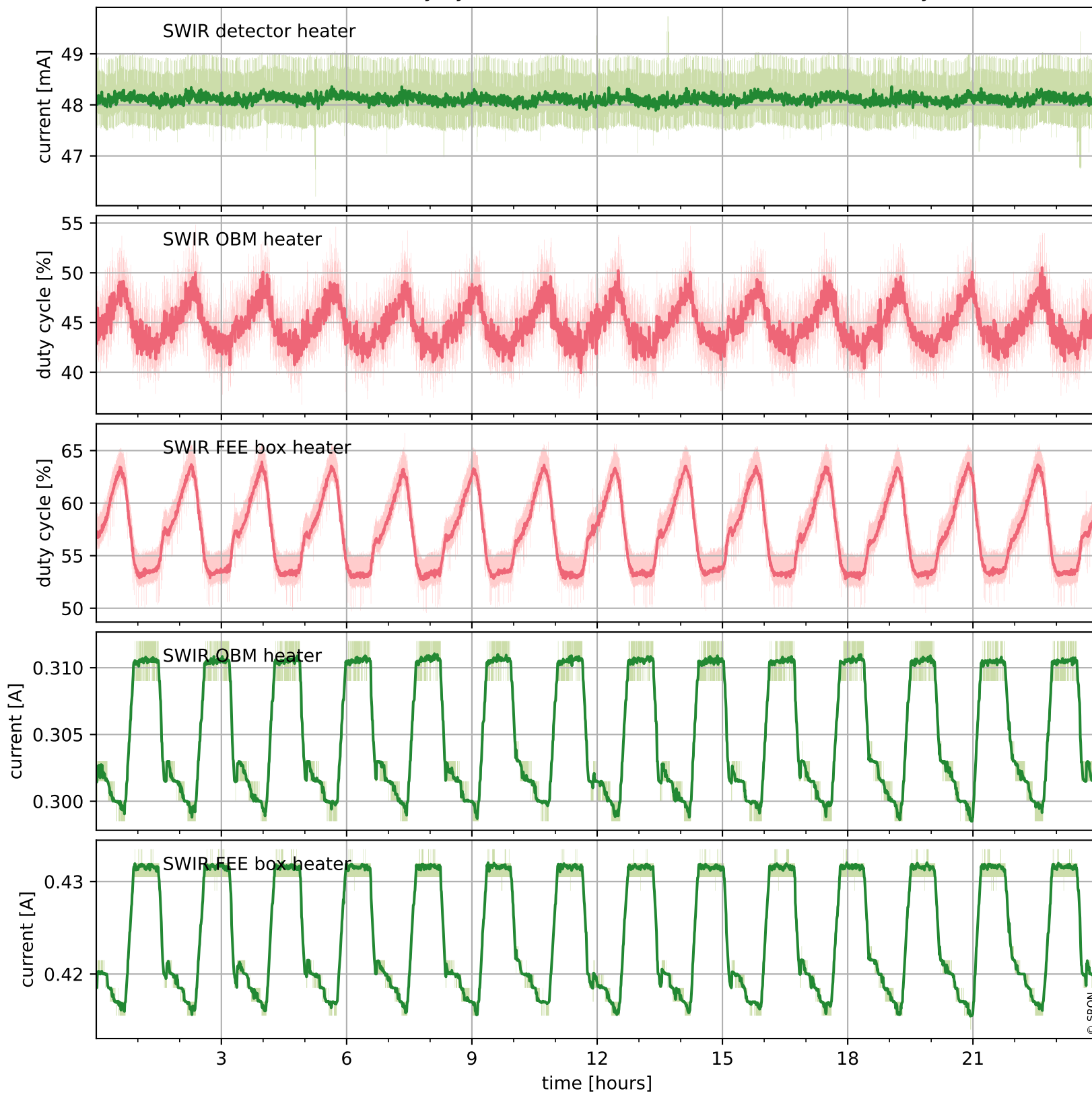
Temperature of sensors relevant for SWIR (last month)



Tropomi SWIR housekeeping data

orbits : [6975, 6989]
coverage : 2019-02-17 / 2019-02-18
created : 2023-08-21T08:41:06

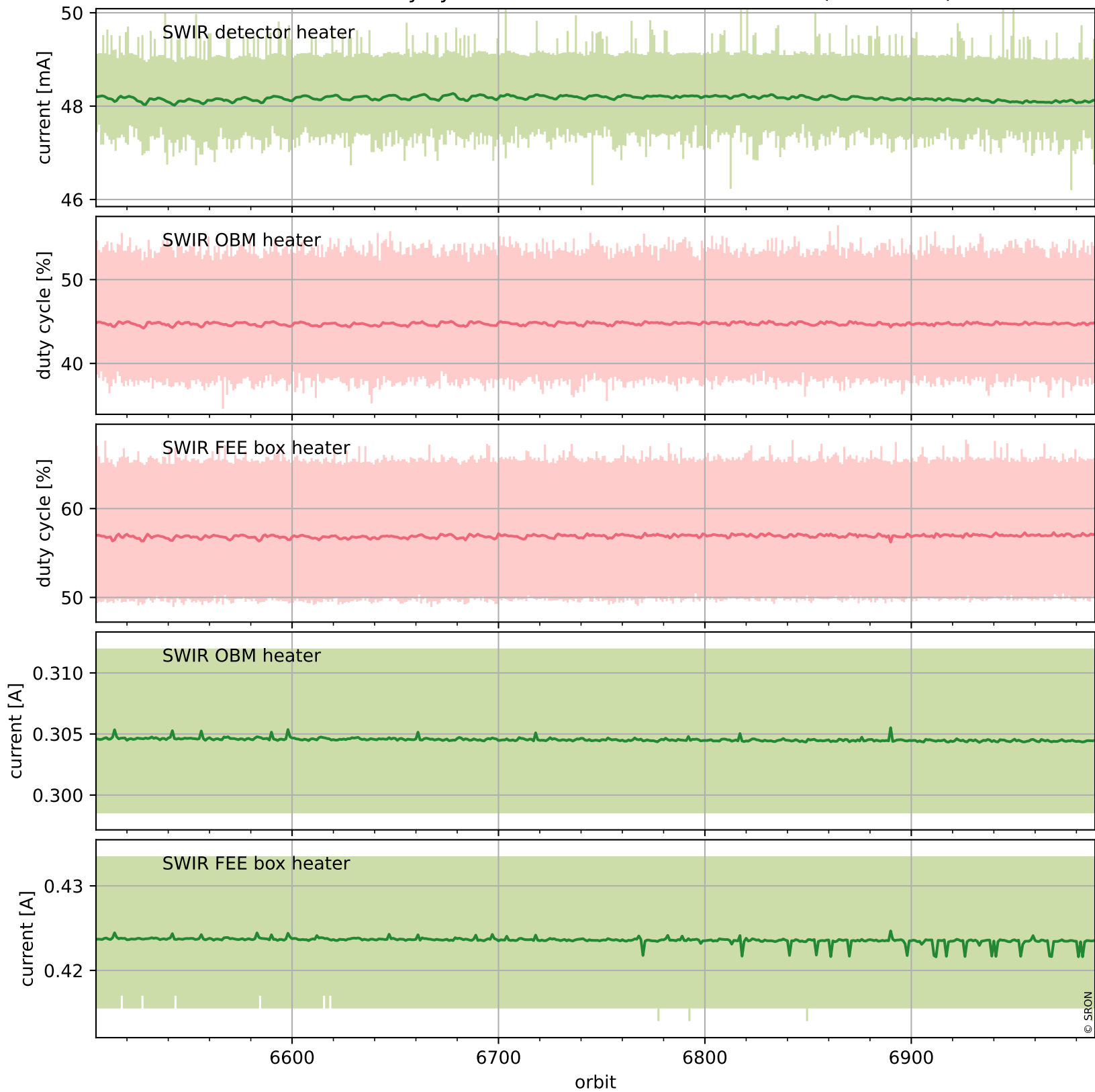
Current and duty cycle of 3 heaters relevant for SWIR (one day)



Tropomi SWIR housekeeping data

orbits : [6505, 6989]
coverage : 2019-01-14 / 2019-02-18
created : 2023-08-21T08:41:07

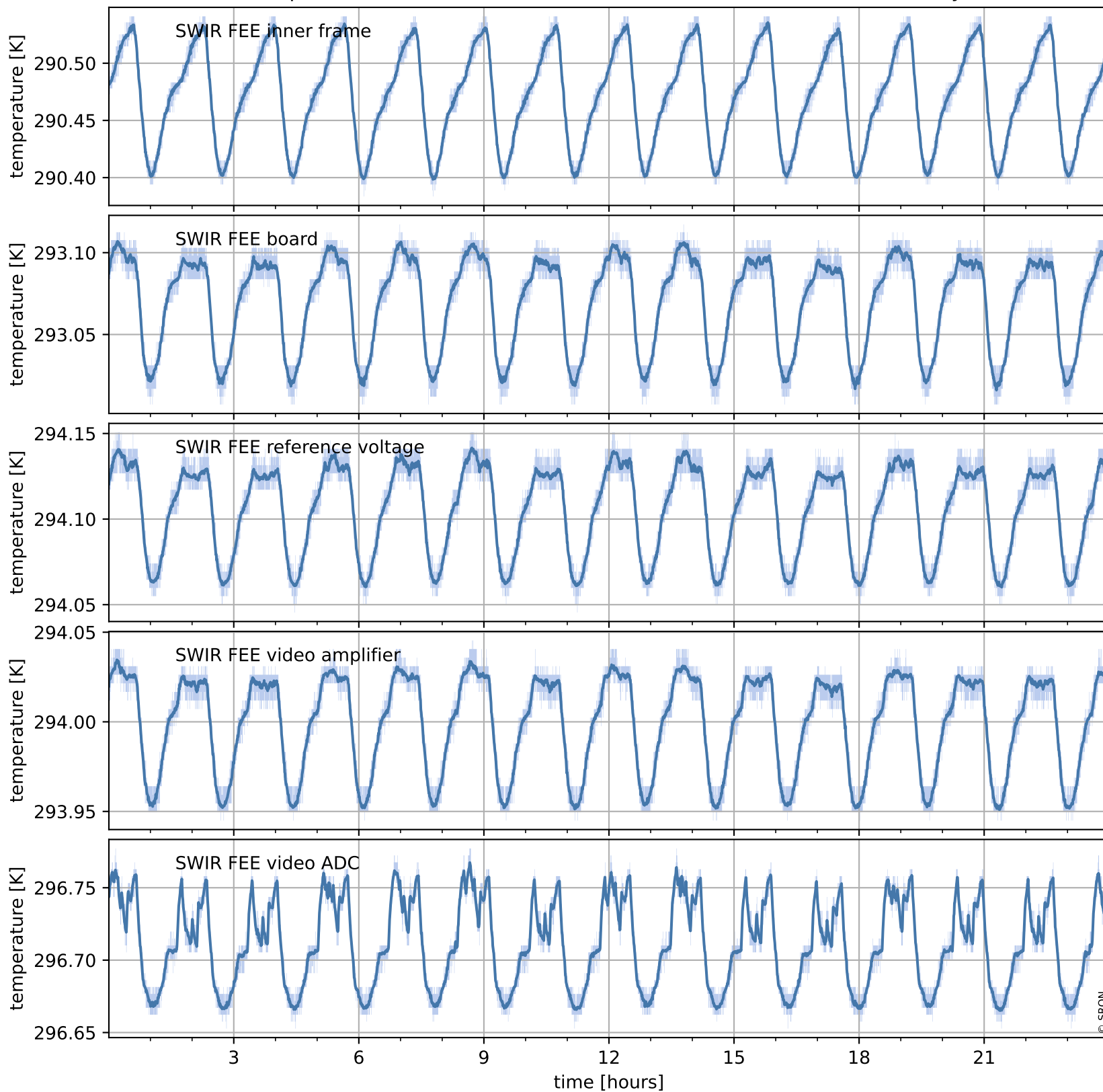
Current and duty cycle of 3 heaters relevant for SWIR (last month)



Tropomi SWIR housekeeping data

orbits : [6975, 6989]
coverage : 2019-02-17 / 2019-02-18
created : 2023-08-21T08:41:07

Temperature of sensors at the SWIR front-end electronics (one day)



Tropomi SWIR housekeeping data

orbits : [6505, 6989]
coverage : 2019-01-14 / 2019-02-18
created : 2023-08-21T08:41:07

Temperature of sensors at the SWIR front-end electronics (last month)

