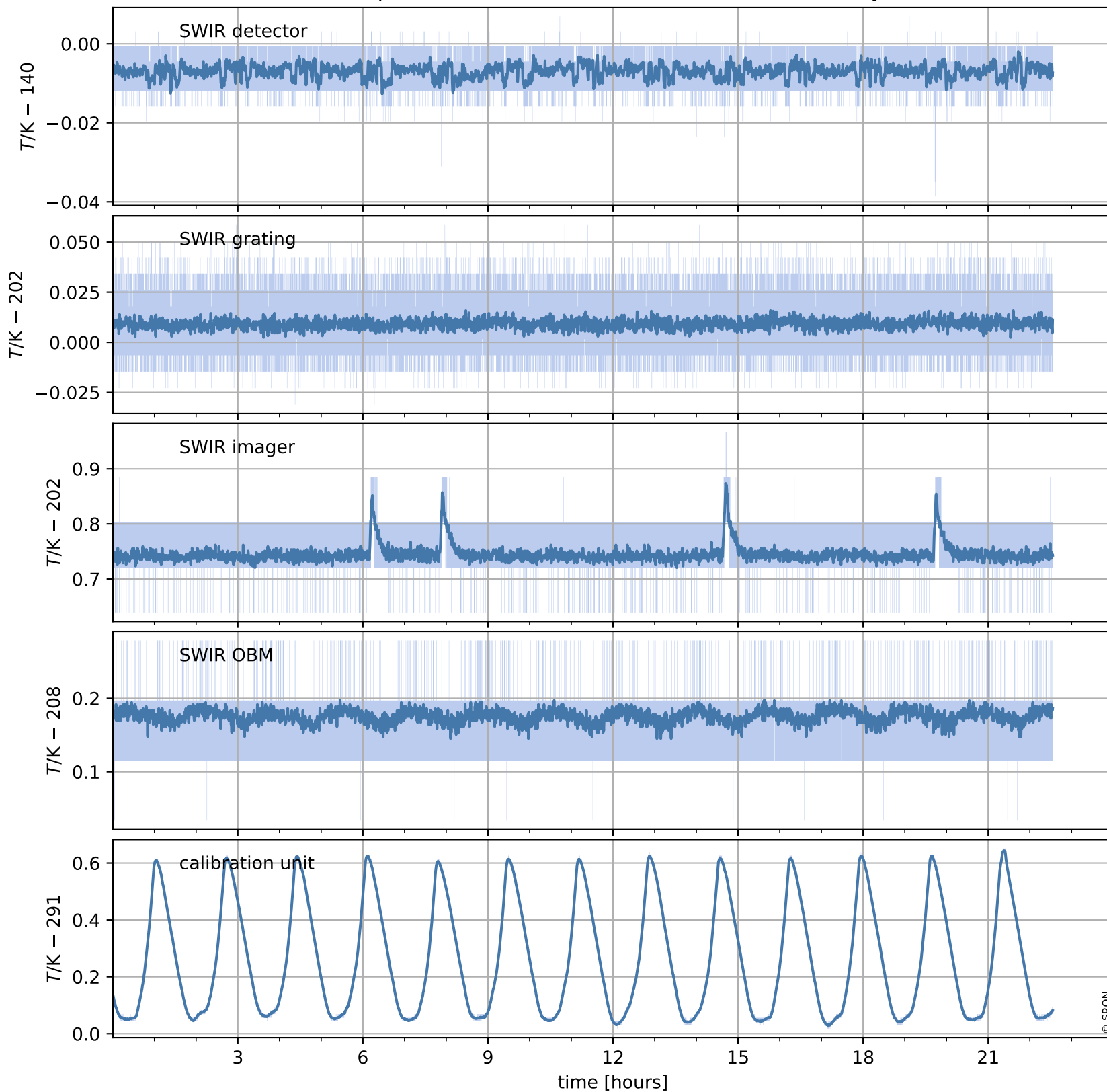


Tropomi SWIR housekeeping data

orbits : [7770, 7782]
coverage : 2019-04-14 / 2019-04-14
created : 2023-08-21T08:43:17

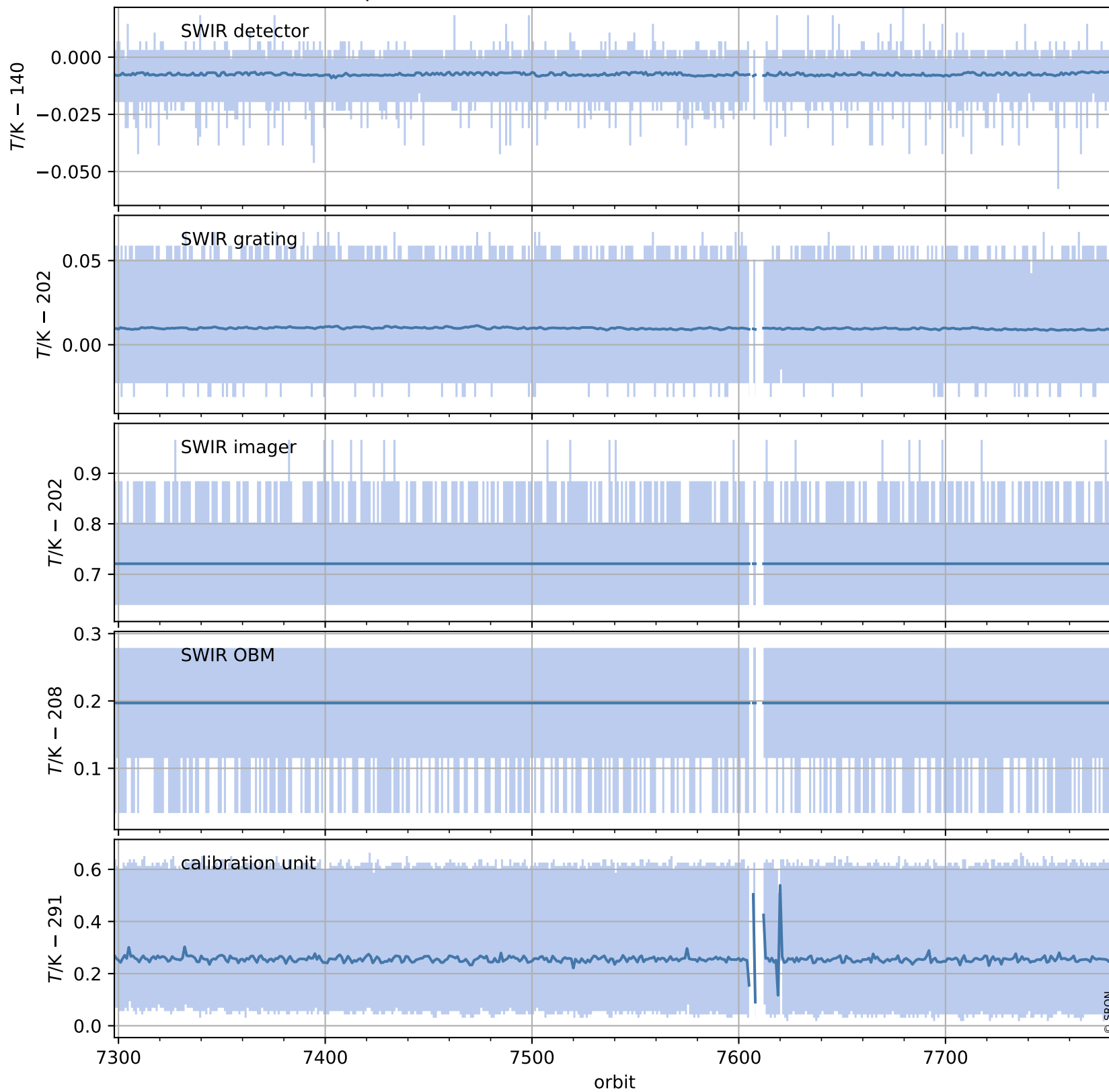
Temperature of sensors relevant for SWIR (one day)



Tropomi SWIR housekeeping data

orbits : [7298, 7782]
coverage : 2019-03-11 / 2019-04-14
created : 2023-08-21T08:43:17

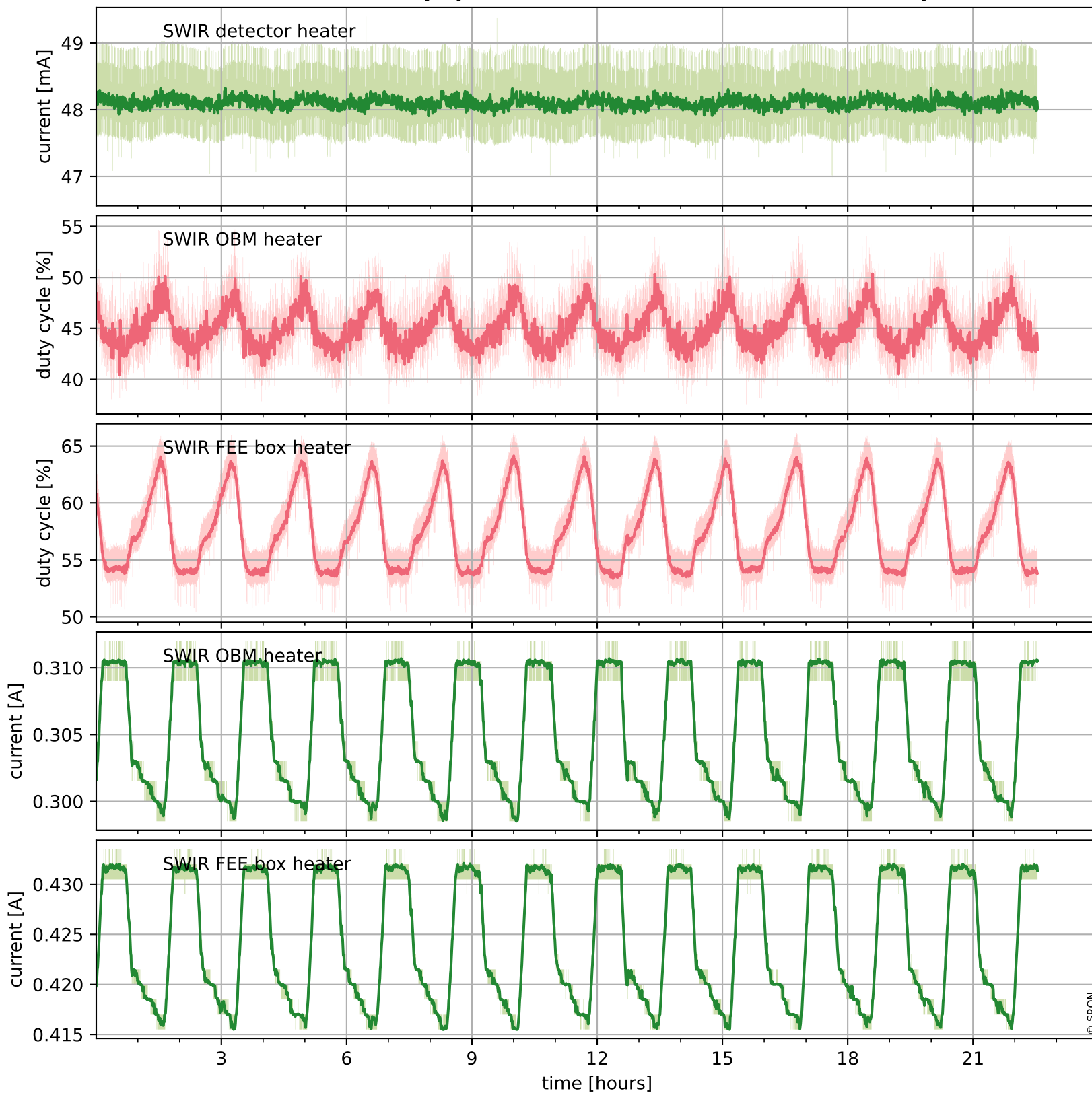
Temperature of sensors relevant for SWIR (last month)



Tropomi SWIR housekeeping data

orbits : [7770, 7782]
coverage : 2019-04-14 / 2019-04-14
created : 2023-08-21T08:43:18

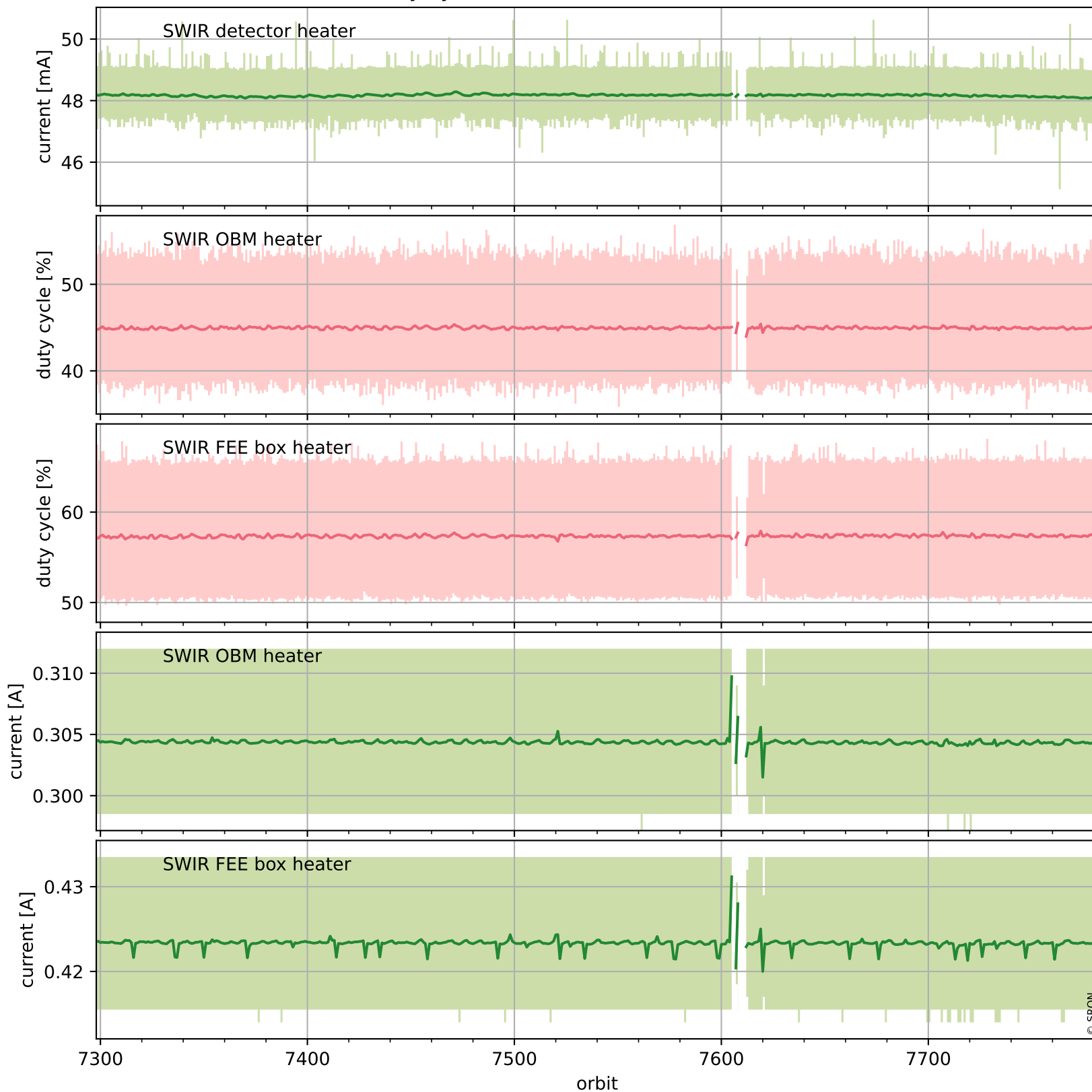
Current and duty cycle of 3 heaters relevant for SWIR (one day)



Tropomi SWIR housekeeping data

orbits : [7298, 7782]
coverage : 2019-03-11 / 2019-04-14
created : 2023-08-21T08:43:18

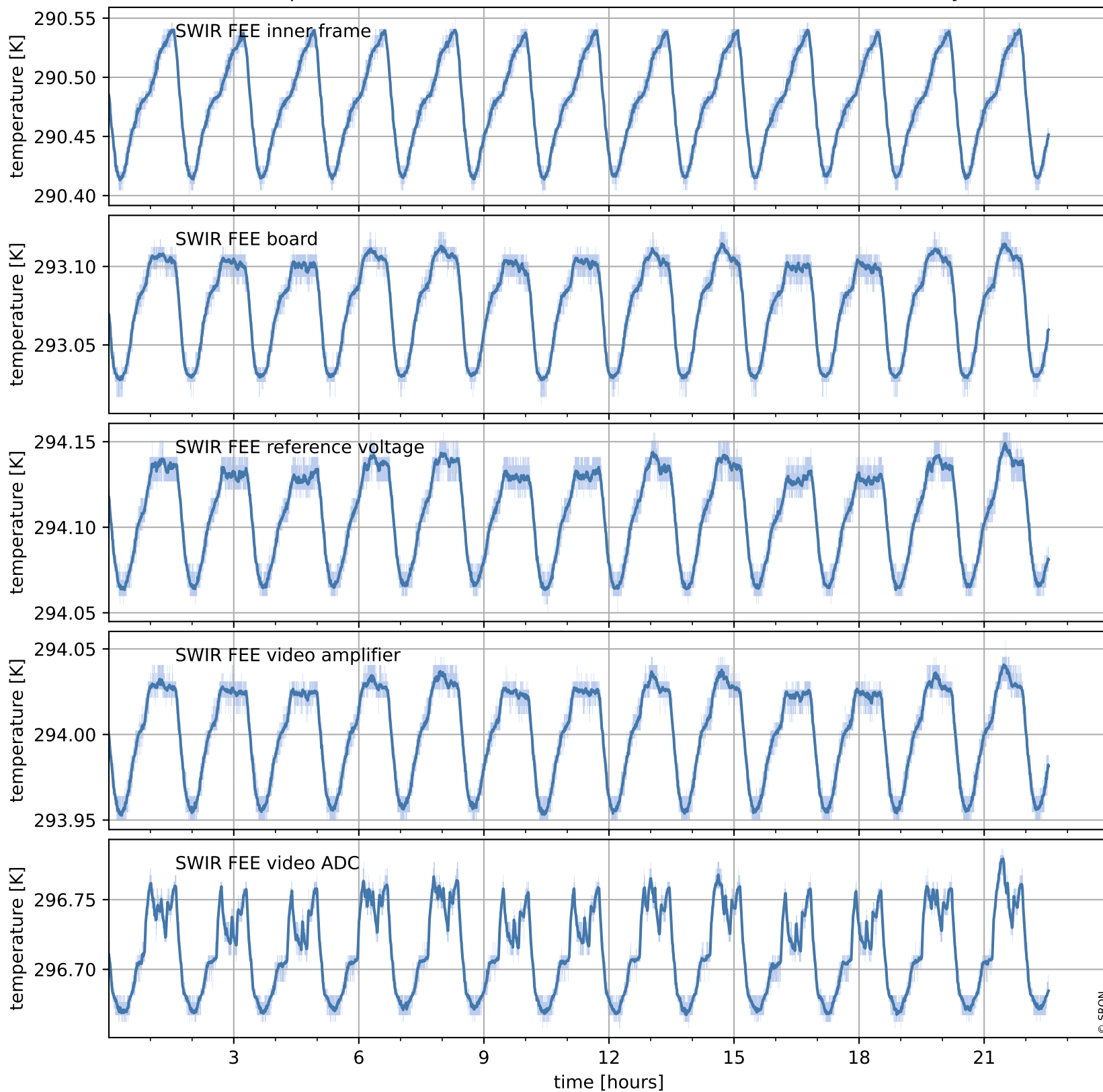
Current and duty cycle of 3 heaters relevant for SWIR (last month)



Tropomi SWIR housekeeping data

orbits : [7770, 7782]
coverage : 2019-04-14 / 2019-04-14
created : 2023-08-21T08:43:19

Temperature of sensors at the SWIR front-end electronics (one day)



Tropomi SWIR housekeeping data

orbits : [7298, 7782]
coverage : 2019-03-11 / 2019-04-14
created : 2023-08-21T08:43:19

Temperature of sensors at the SWIR front-end electronics (last month)

