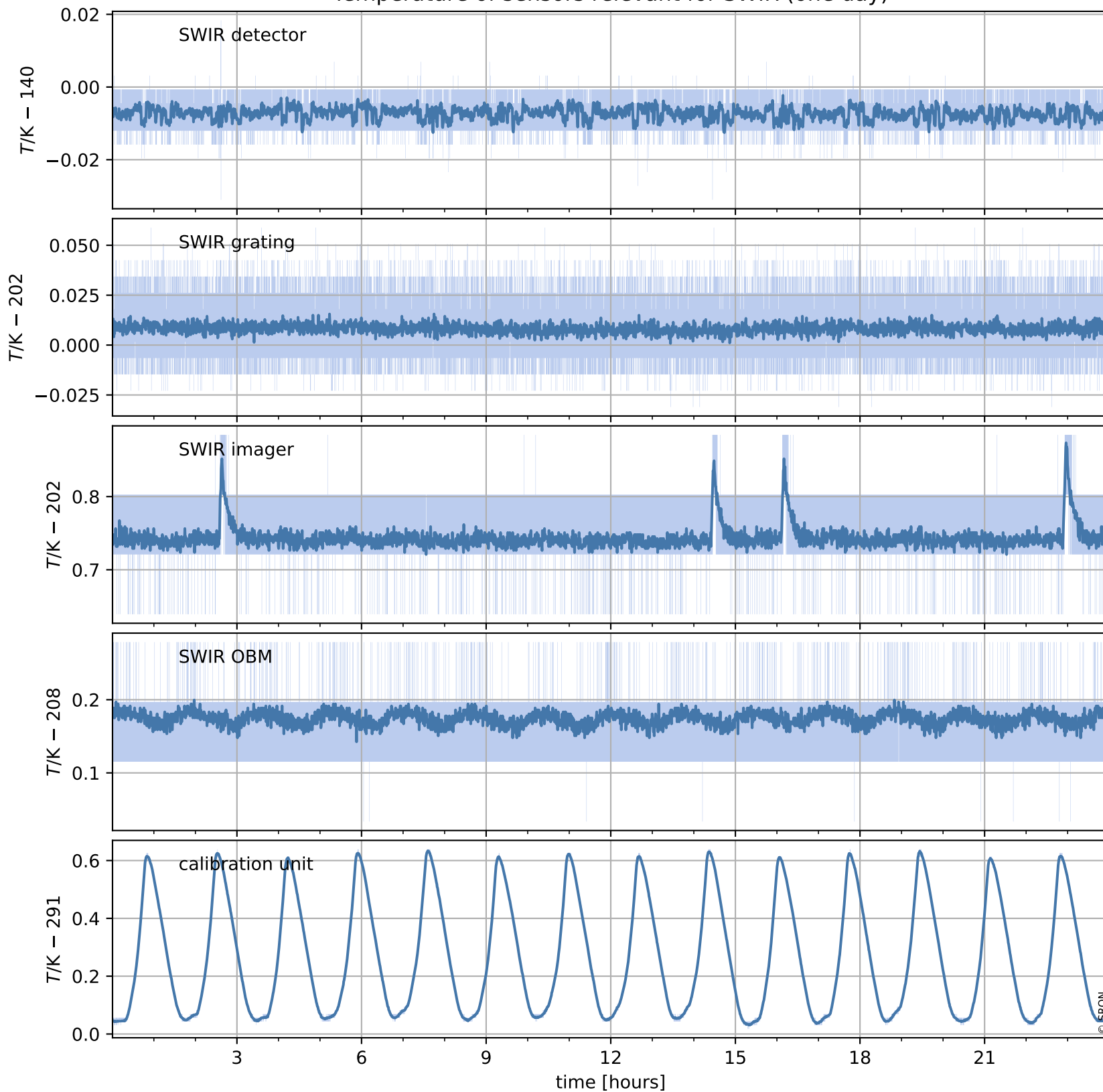


# Tropomi SWIR housekeeping data

orbits : [7855, 7868]  
coverage : 2019-04-20 / 2019-04-21  
created : 2023-08-21T08:43:32

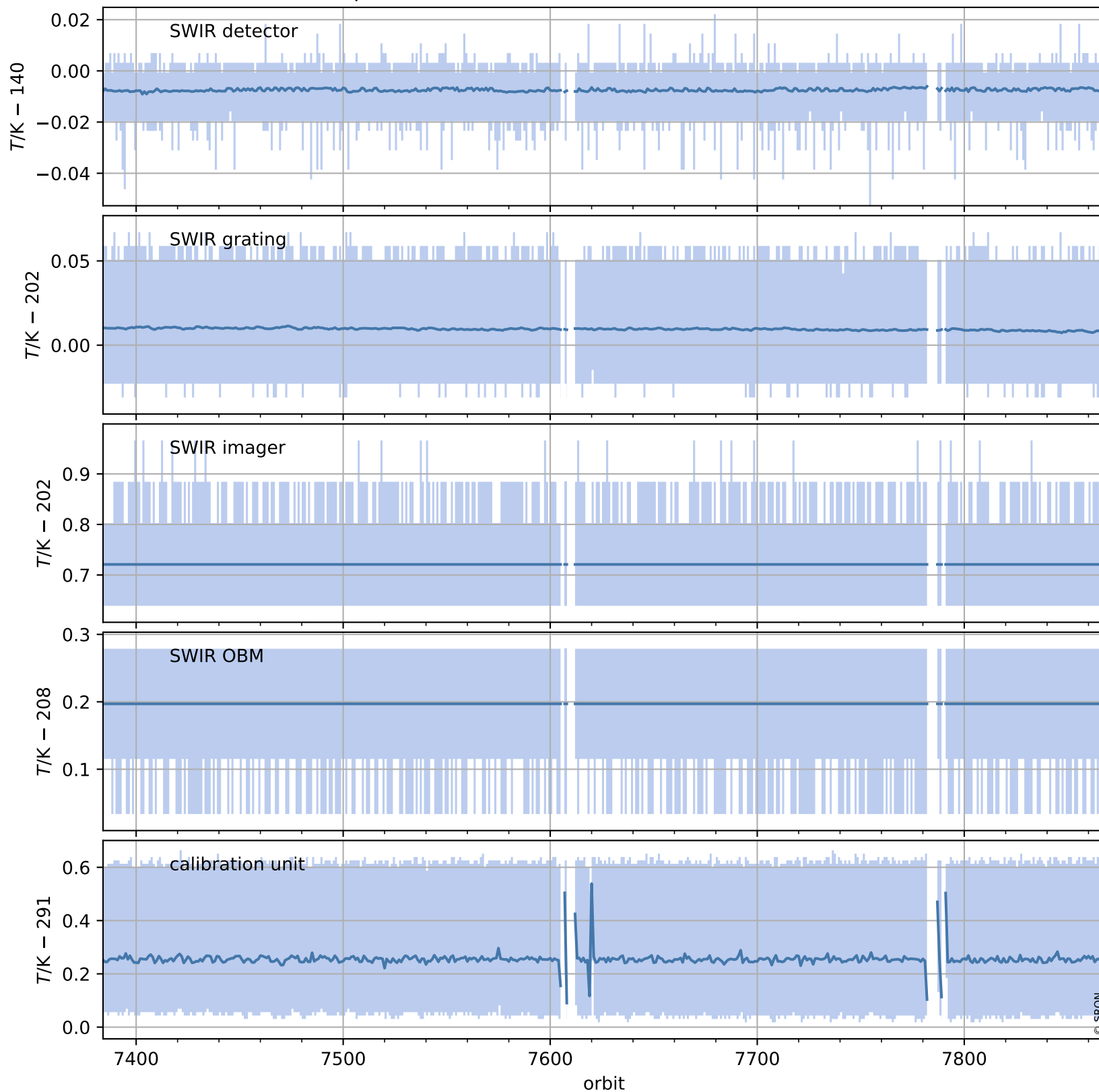
## Temperature of sensors relevant for SWIR (one day)



# Tropomi SWIR housekeeping data

orbits : [7384, 7868]  
coverage : 2019-03-17 / 2019-04-21  
created : 2023-08-21T08:43:32

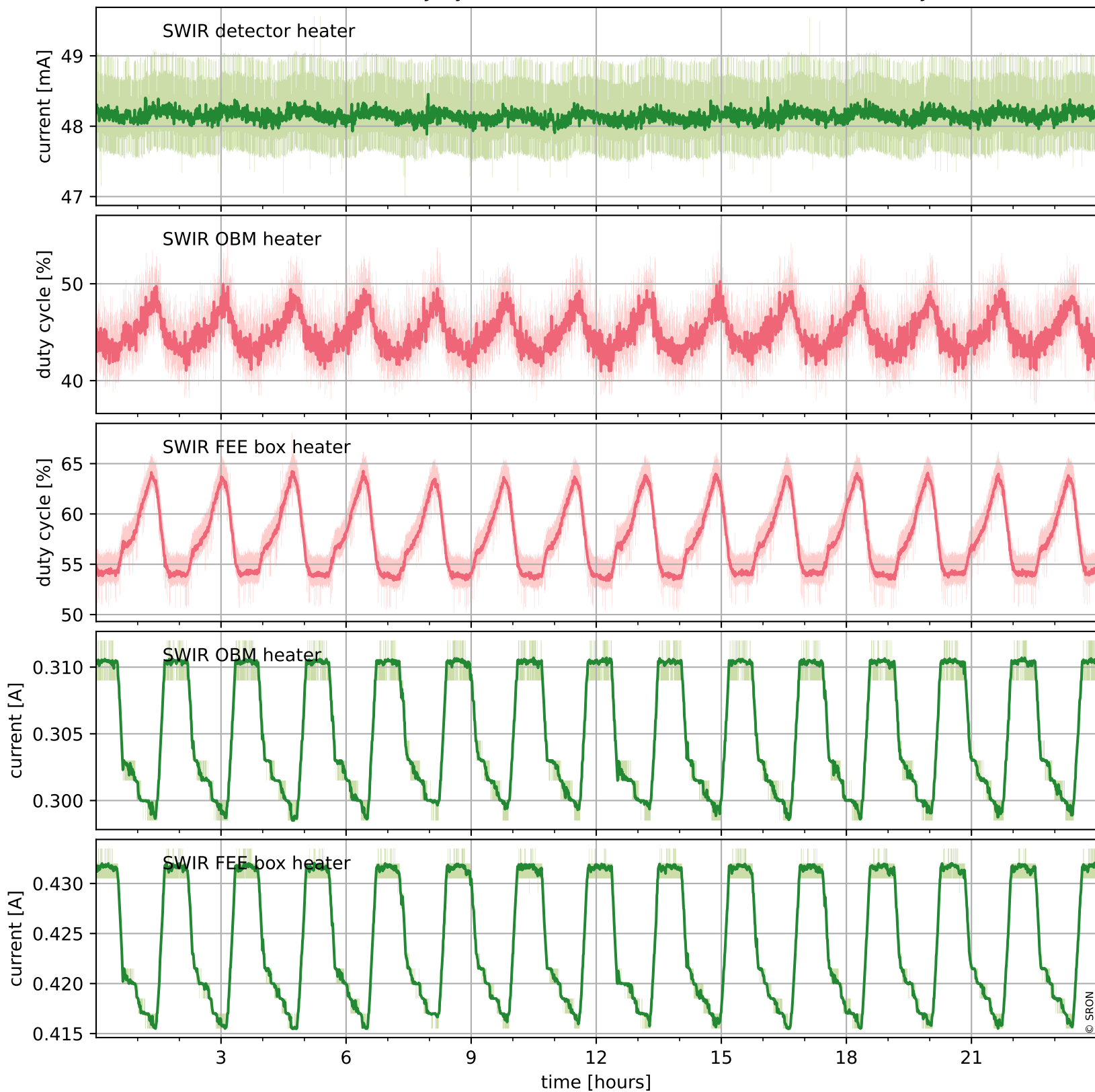
## Temperature of sensors relevant for SWIR (last month)



# Tropomi SWIR housekeeping data

orbits : [7855, 7868]  
coverage : 2019-04-20 / 2019-04-21  
created : 2023-08-21T08:43:33

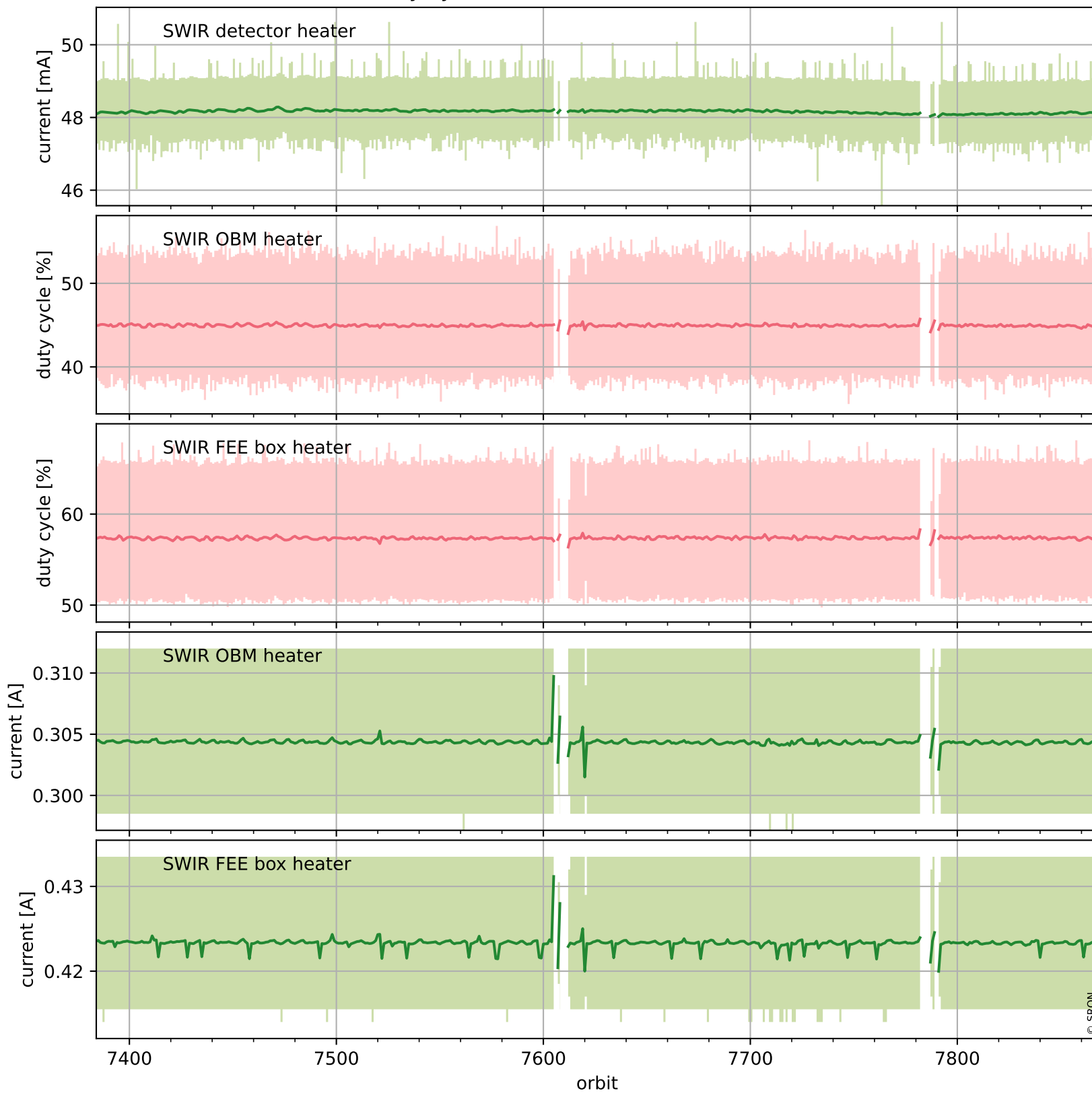
## Current and duty cycle of 3 heaters relevant for SWIR (one day)



# Tropomi SWIR housekeeping data

orbits : [7384, 7868]  
coverage : 2019-03-17 / 2019-04-21  
created : 2023-08-21T08:43:33

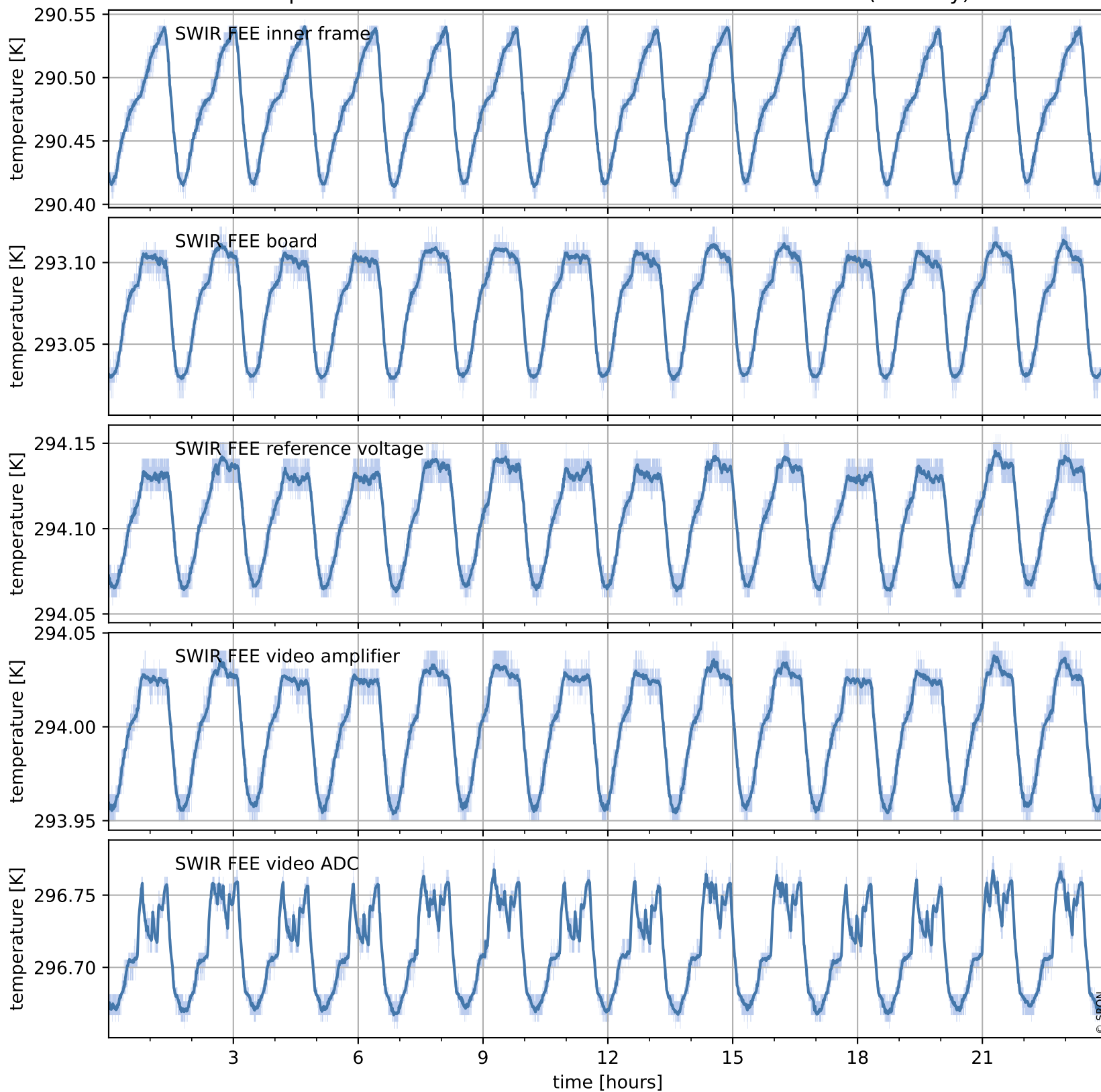
## Current and duty cycle of 3 heaters relevant for SWIR (last month)



# Tropomi SWIR housekeeping data

orbits : [7855, 7868]  
coverage : 2019-04-20 / 2019-04-21  
created : 2023-08-21T08:43:33

## Temperature of sensors at the SWIR front-end electronics (one day)



# Tropomi SWIR housekeeping data

orbits : [7384, 7868]  
coverage : 2019-03-17 / 2019-04-21  
created : 2023-08-21T08:43:34

## Temperature of sensors at the SWIR front-end electronics (last month)

