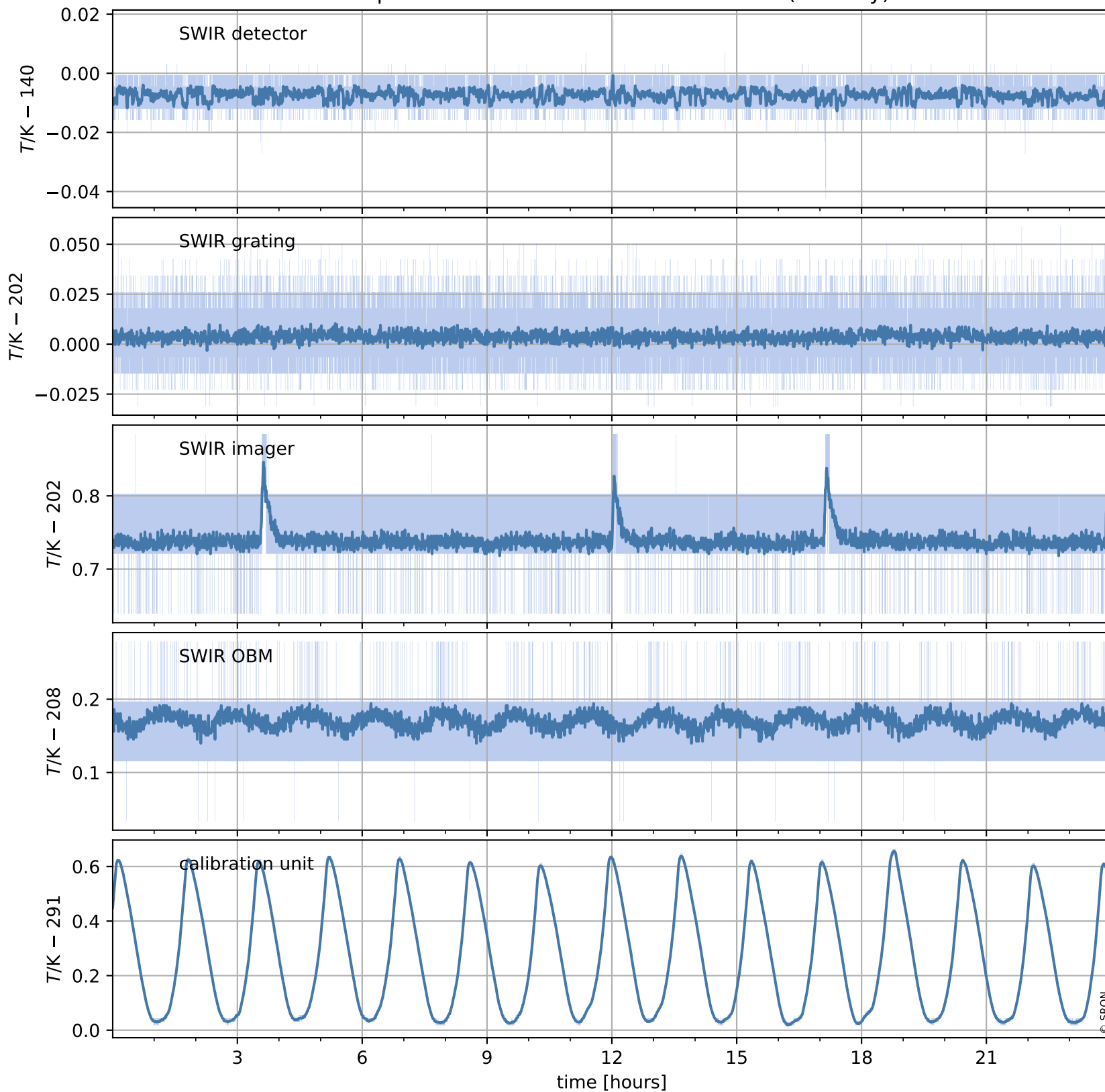


Tropomi SWIR housekeeping data

orbits : [8266, 8279]
coverage : 2019-05-19 / 2019-05-20
created : 2023-08-21T08:44:43

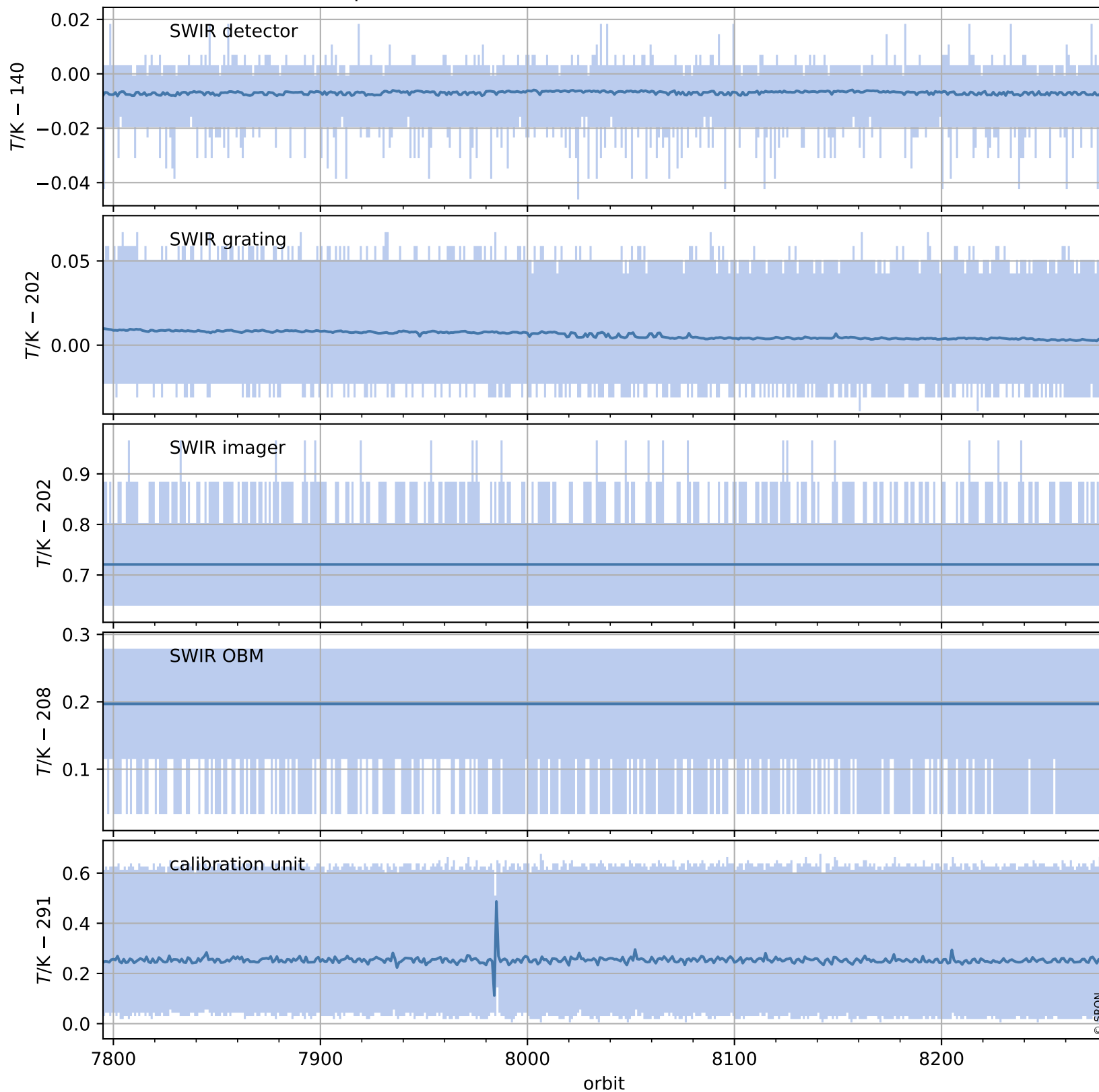
Temperature of sensors relevant for SWIR (one day)



Tropomi SWIR housekeeping data

orbits : [7795, 8279]
coverage : 2019-04-15 / 2019-05-20
created : 2023-08-21T08:44:43

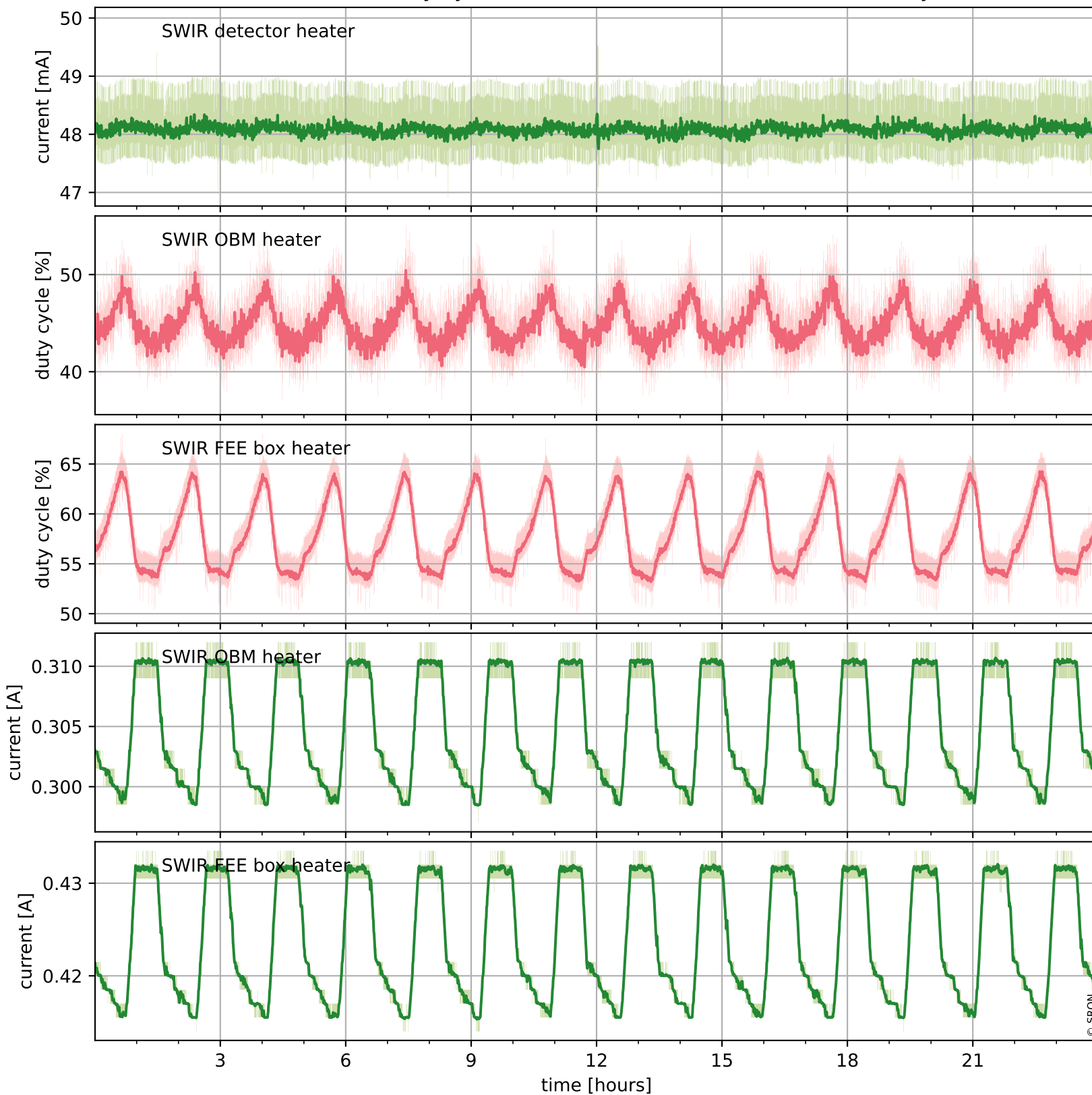
Temperature of sensors relevant for SWIR (last month)



Tropomi SWIR housekeeping data

orbits : [8266, 8279]
coverage : 2019-05-19 / 2019-05-20
created : 2023-08-21T08:44:43

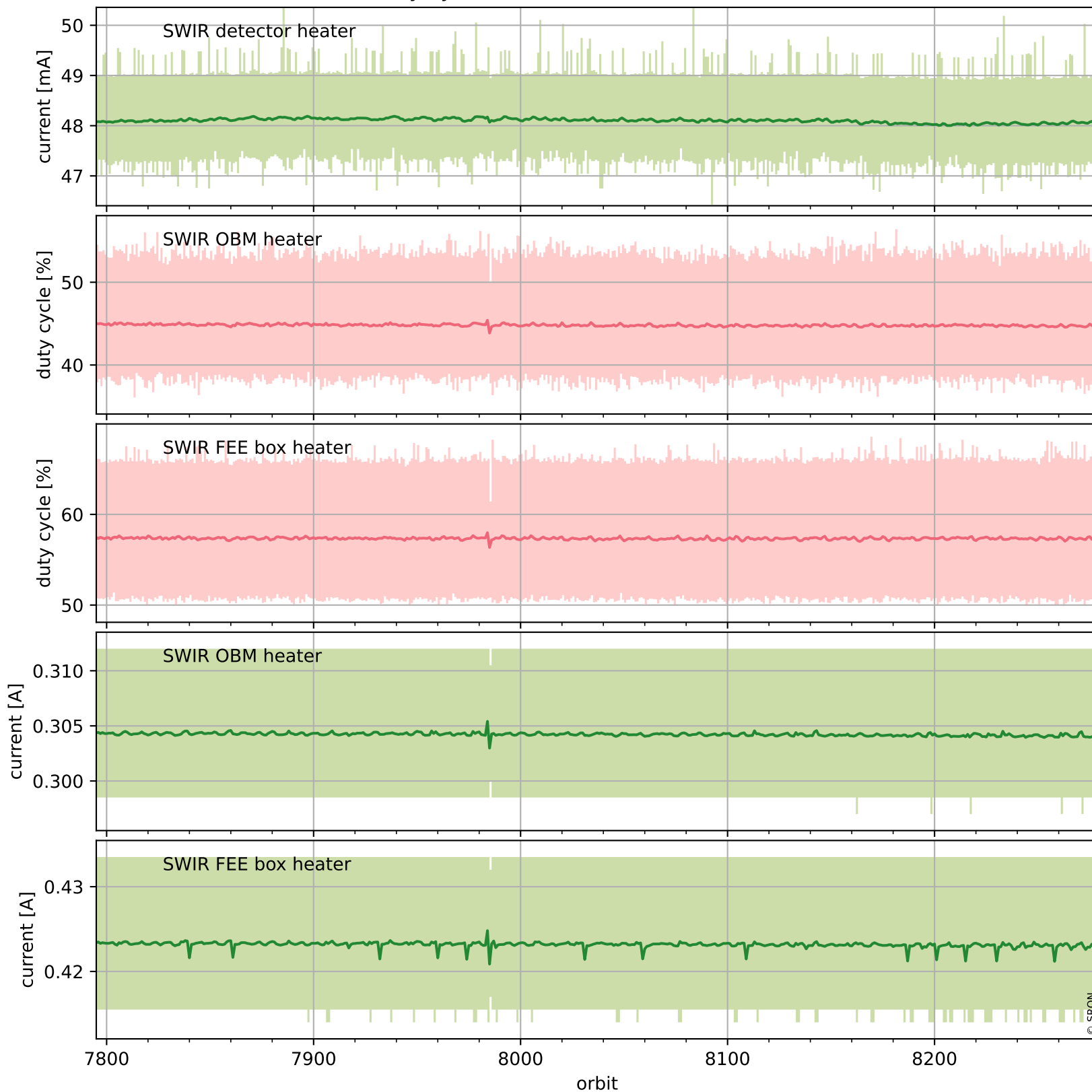
Current and duty cycle of 3 heaters relevant for SWIR (one day)



Tropomi SWIR housekeeping data

orbits : [7795, 8279]
coverage : 2019-04-15 / 2019-05-20
created : 2023-08-21T08:44:44

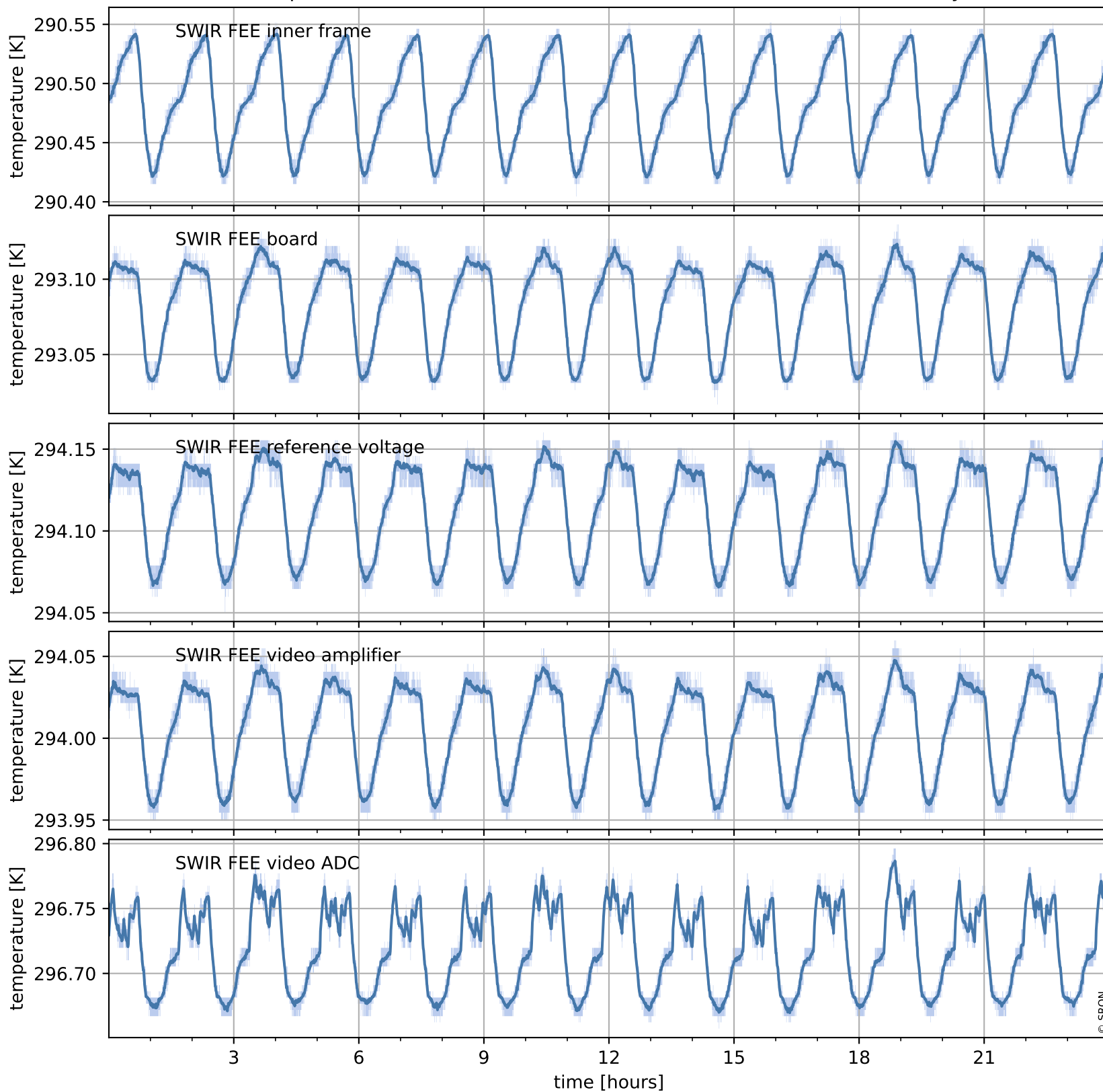
Current and duty cycle of 3 heaters relevant for SWIR (last month)



Tropomi SWIR housekeeping data

orbits : [8266, 8279]
coverage : 2019-05-19 / 2019-05-20
created : 2023-08-21T08:44:44

Temperature of sensors at the SWIR front-end electronics (one day)



Tropomi SWIR housekeeping data

orbits : [7795, 8279]
coverage : 2019-04-15 / 2019-05-20
created : 2023-08-21T08:44:45

Temperature of sensors at the SWIR front-end electronics (last month)

