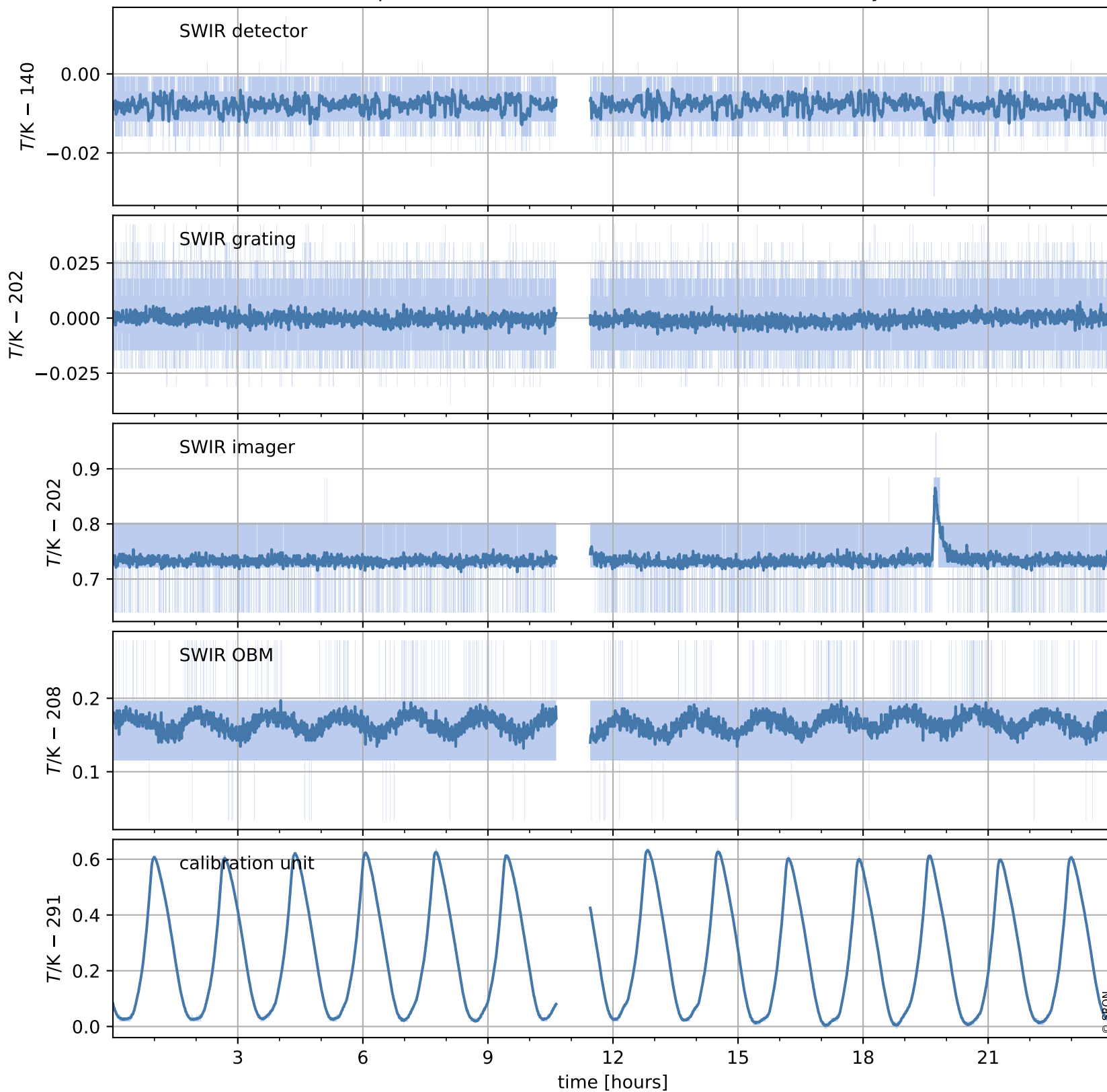


# Tropomi SWIR housekeeping data

orbits : [8607, 8620]  
coverage : 2019-06-12 / 2019-06-13  
created : 2023-08-21T08:45:39

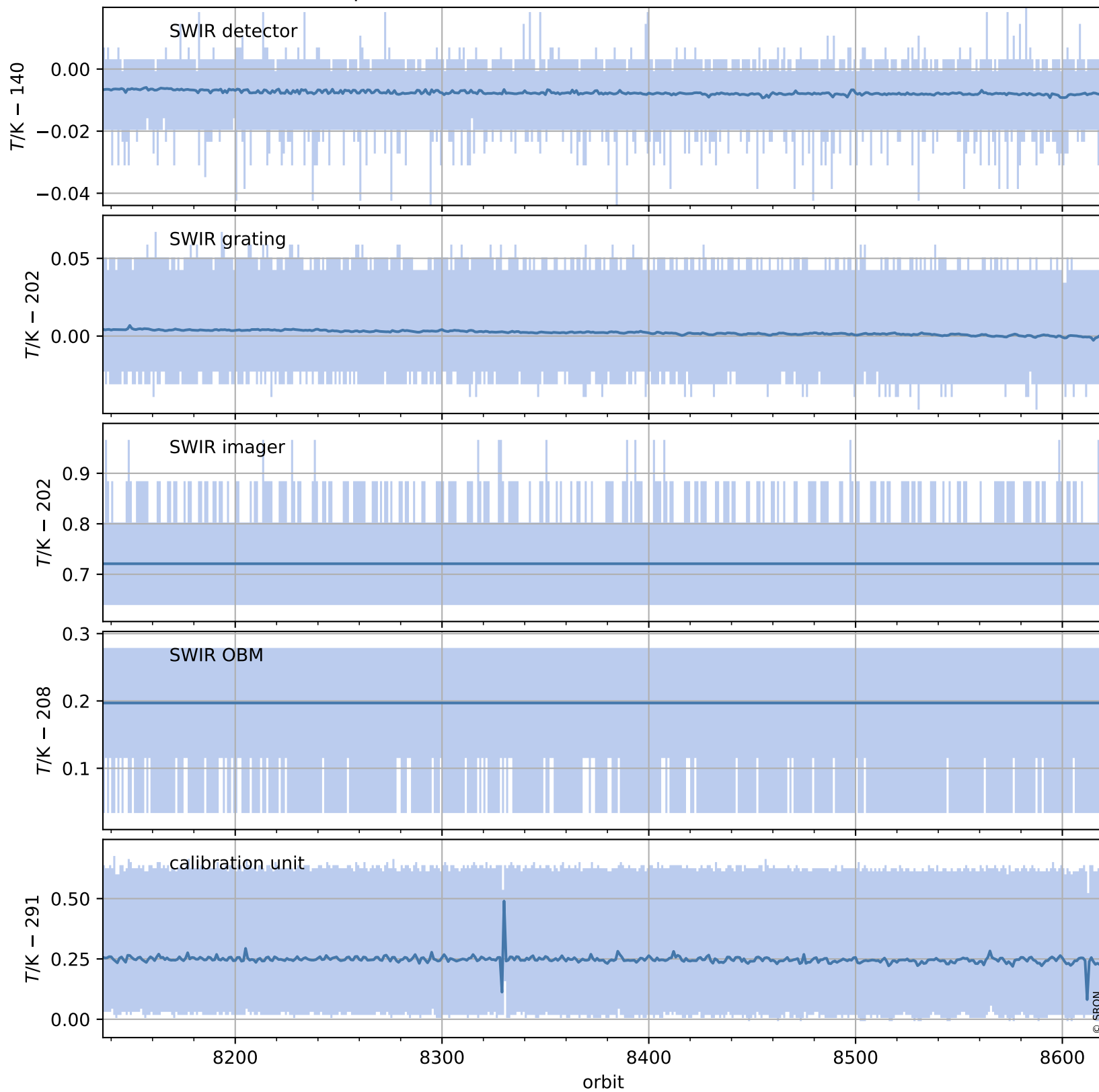
## Temperature of sensors relevant for SWIR (one day)



# Tropomi SWIR housekeeping data

orbits : [8136, 8620]  
coverage : 2019-05-09 / 2019-06-13  
created : 2023-08-21T08:45:39

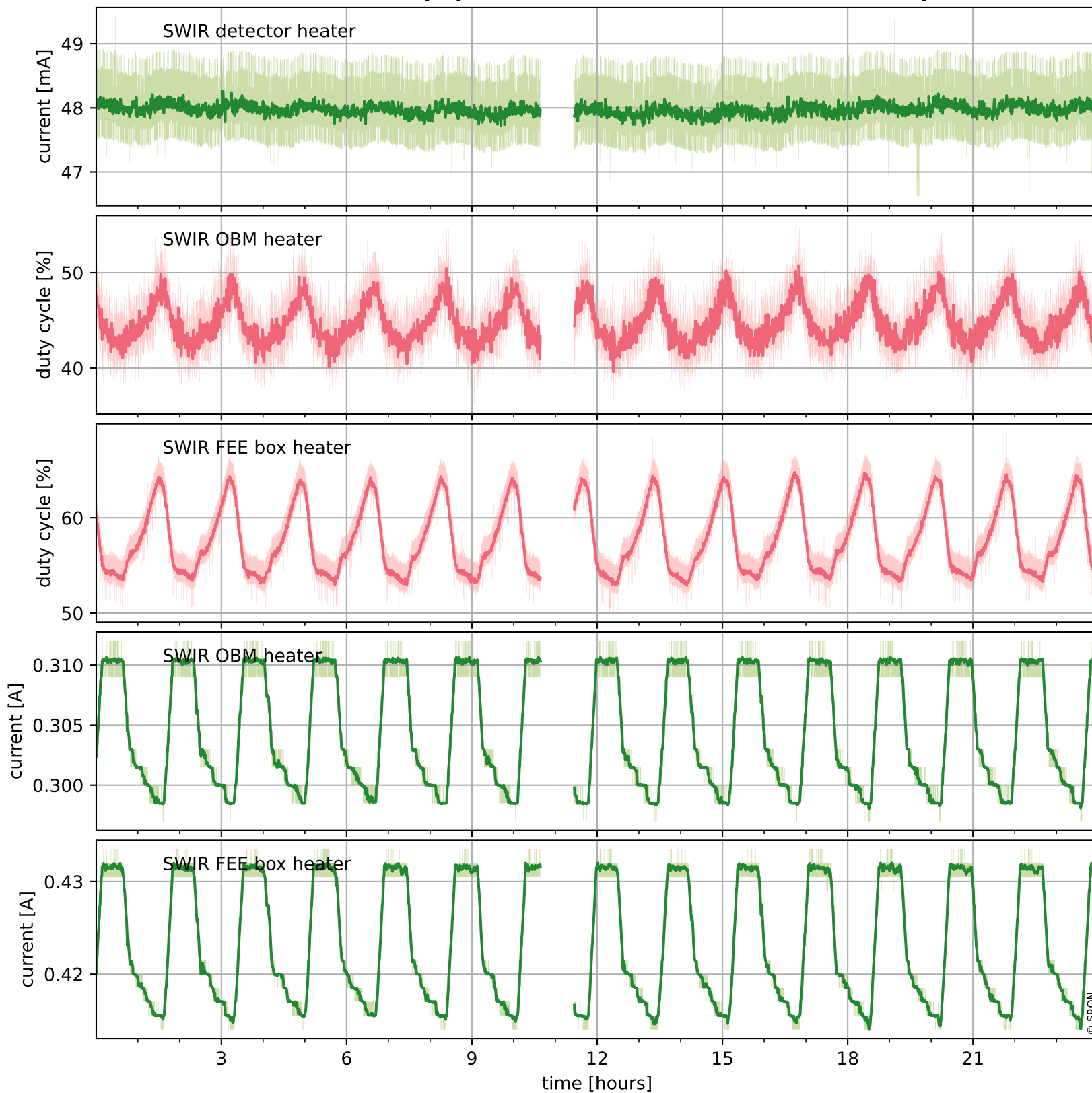
## Temperature of sensors relevant for SWIR (last month)



# Tropomi SWIR housekeeping data

orbits : [8607, 8620]  
coverage : 2019-06-12 / 2019-06-13  
created : 2023-08-21T08:45:39

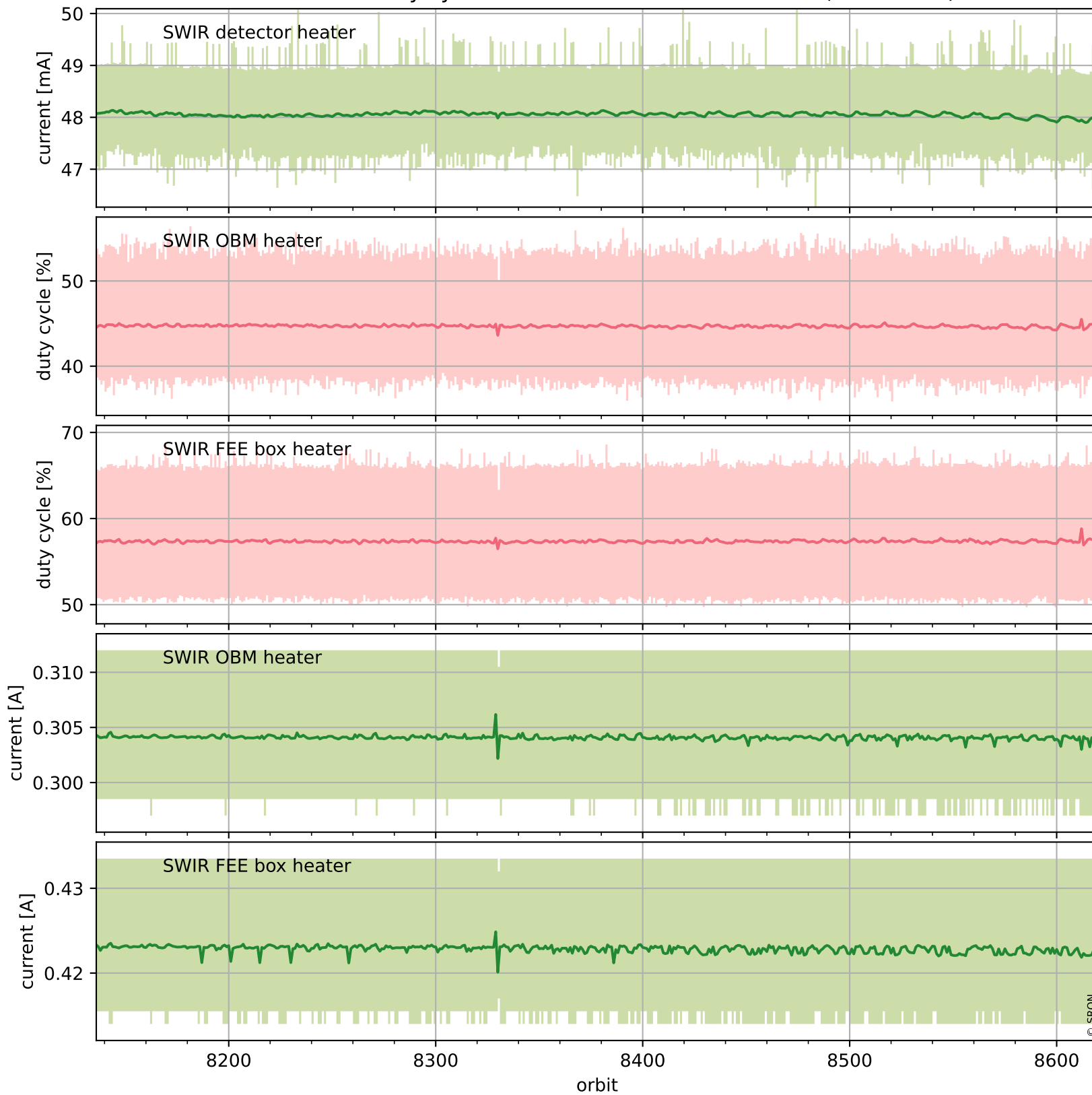
## Current and duty cycle of 3 heaters relevant for SWIR (one day)



# Tropomi SWIR housekeeping data

orbits : [8136, 8620]  
coverage : 2019-05-09 / 2019-06-13  
created : 2023-08-21T08:45:40

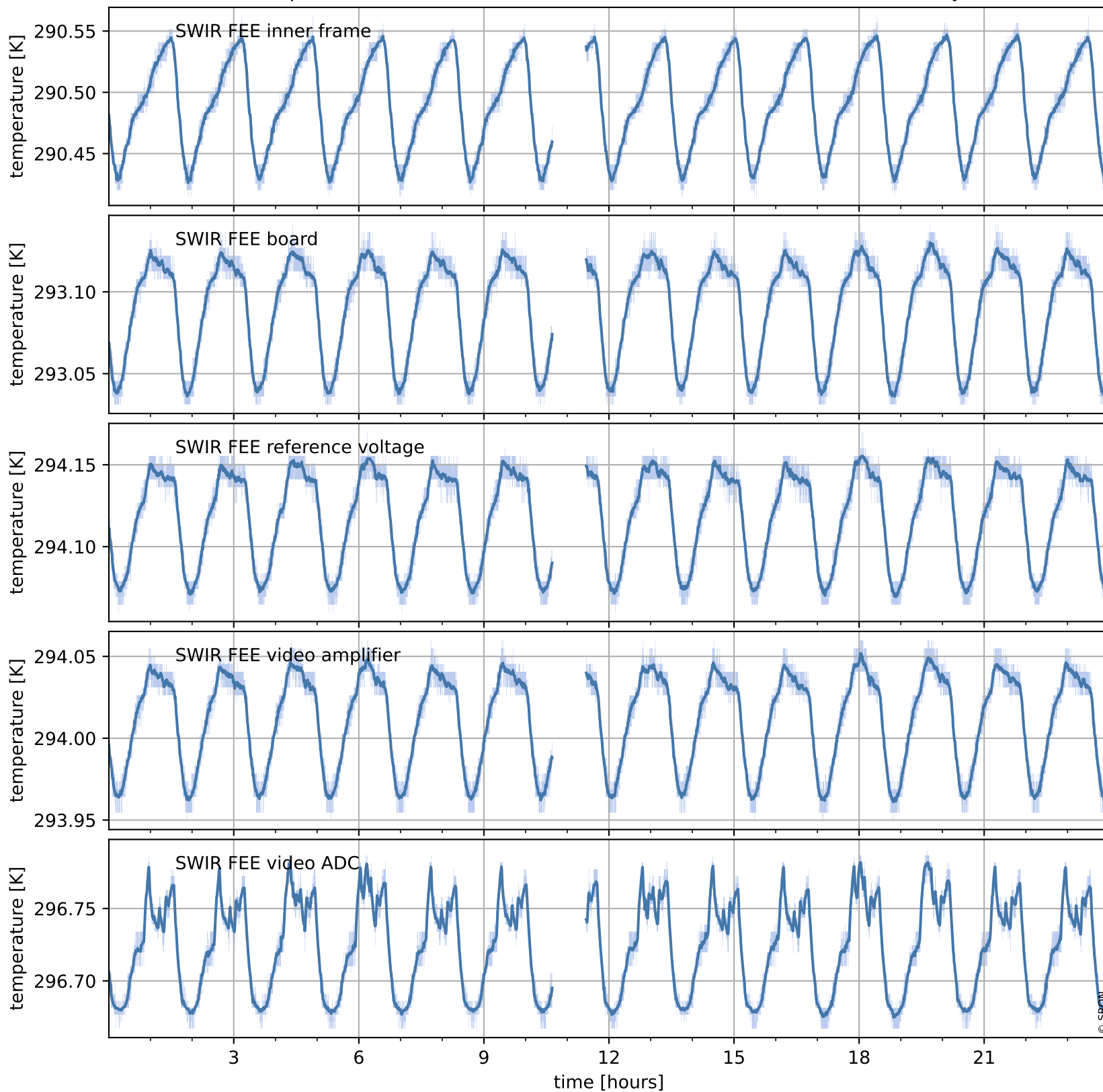
## Current and duty cycle of 3 heaters relevant for SWIR (last month)



# Tropomi SWIR housekeeping data

orbits : [8607, 8620]  
coverage : 2019-06-12 / 2019-06-13  
created : 2023-08-21T08:45:40

## Temperature of sensors at the SWIR front-end electronics (one day)



# Tropomi SWIR housekeeping data

orbits : [8136, 8620]  
coverage : 2019-05-09 / 2019-06-13  
created : 2023-08-21T08:45:40

## Temperature of sensors at the SWIR front-end electronics (last month)

