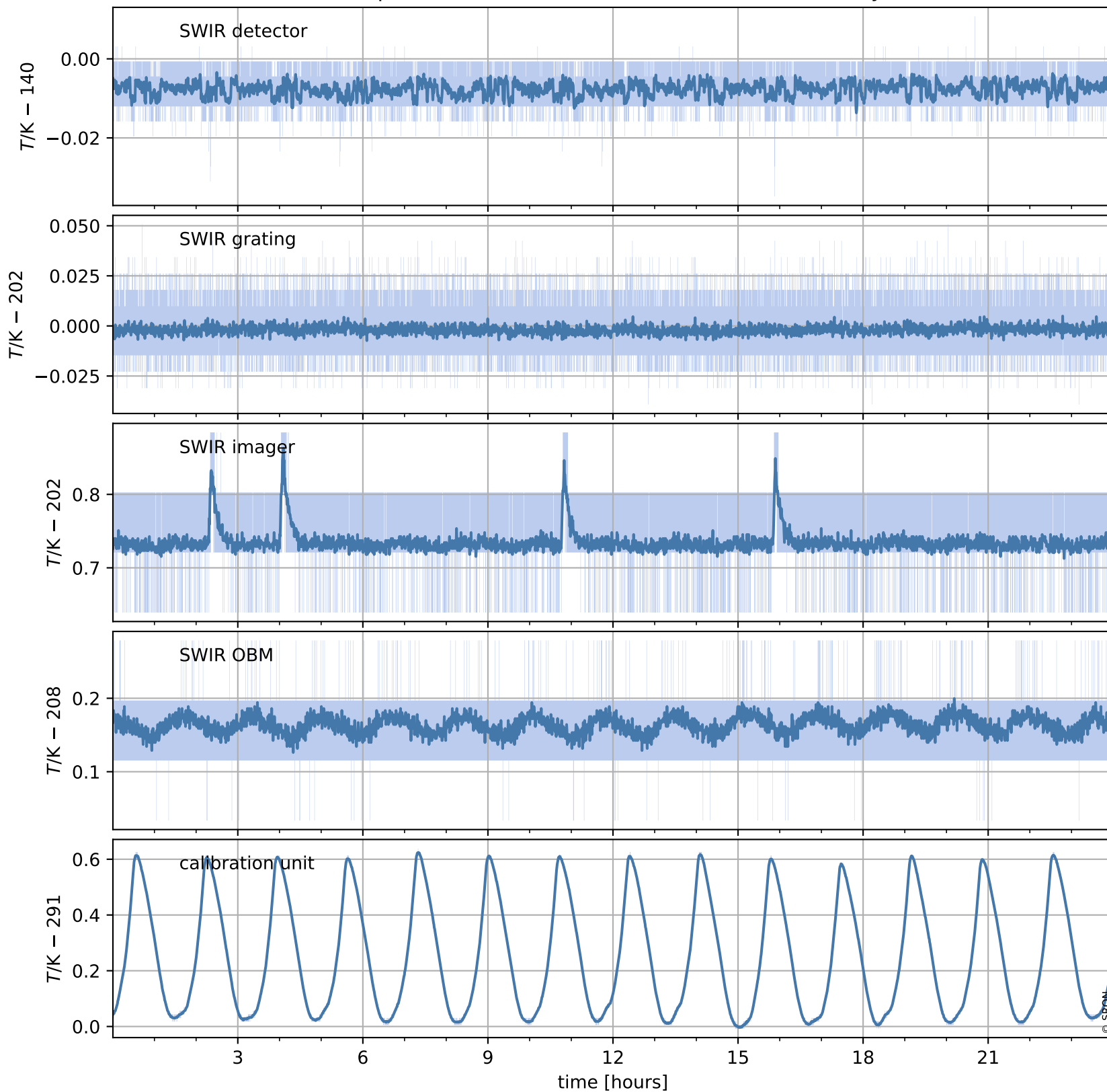


Tropomi SWIR housekeeping data

orbits : [8777, 8790]
coverage : 2019-06-24 / 2019-06-25
created : 2023-08-21T08:46:07

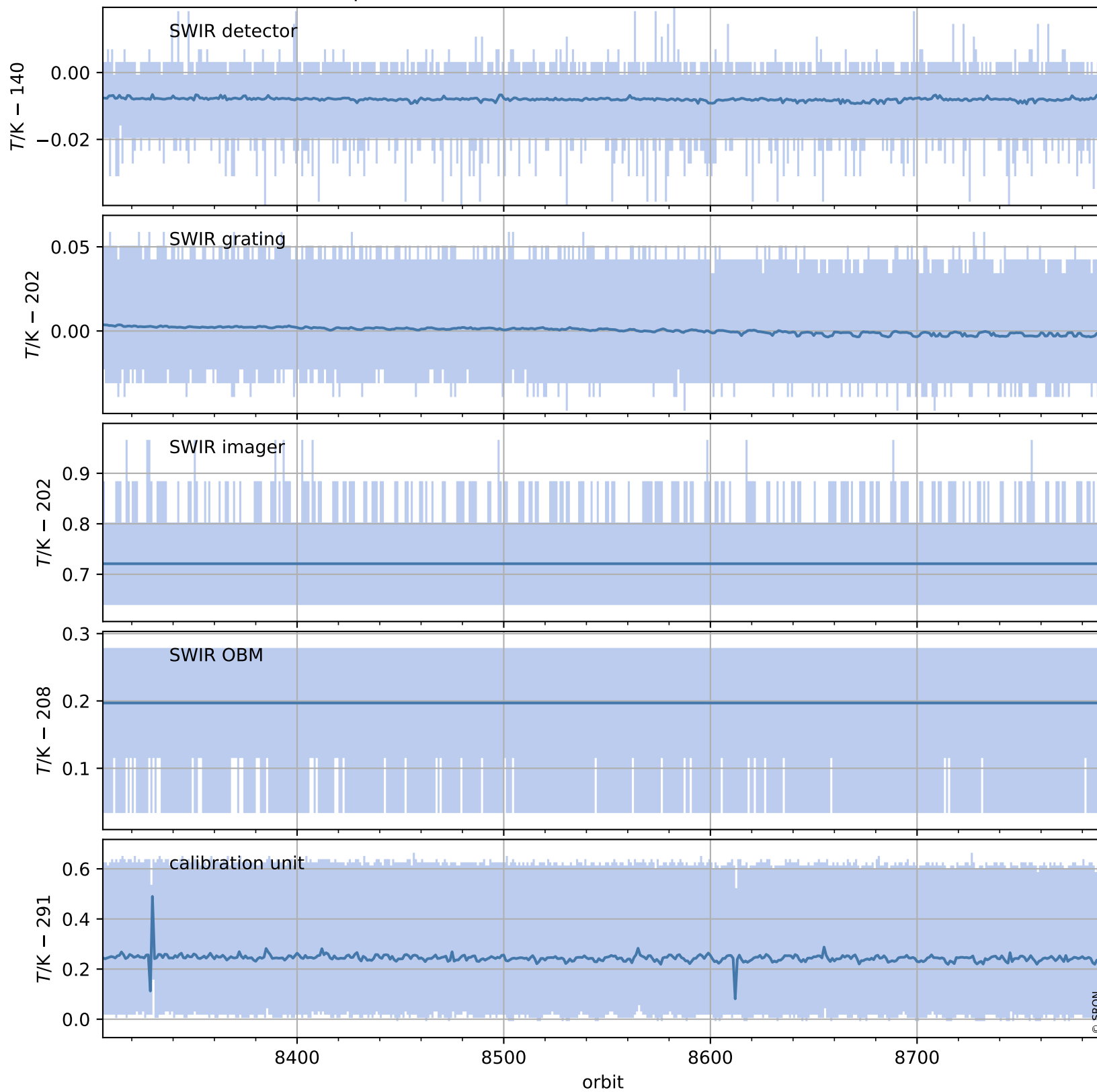
Temperature of sensors relevant for SWIR (one day)



Tropomi SWIR housekeeping data

orbits : [8306, 8790]
coverage : 2019-05-21 / 2019-06-25
created : 2023-08-21T08:46:07

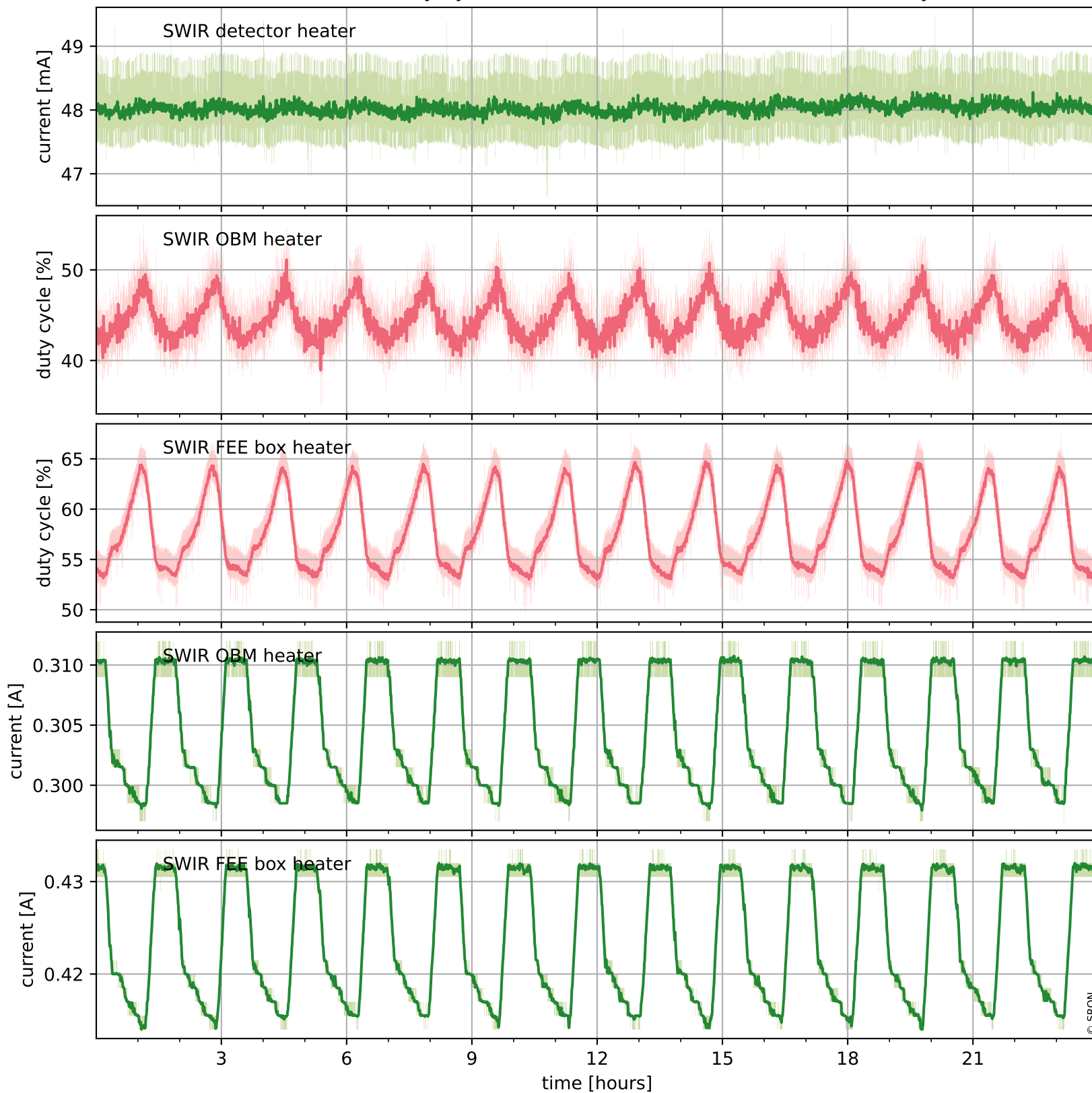
Temperature of sensors relevant for SWIR (last month)



Tropomi SWIR housekeeping data

orbits : [8777, 8790]
coverage : 2019-06-24 / 2019-06-25
created : 2023-08-21T08:46:08

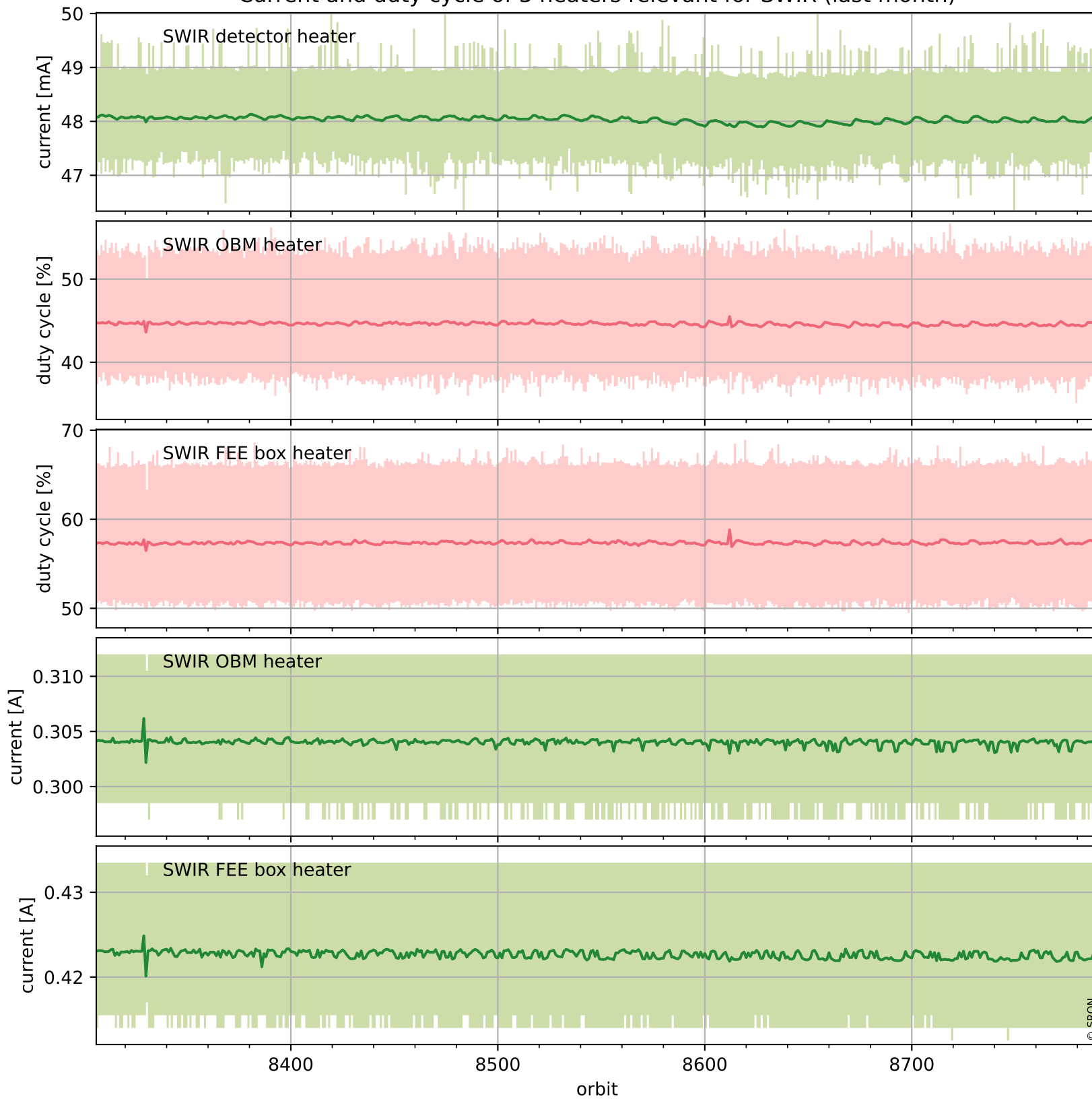
Current and duty cycle of 3 heaters relevant for SWIR (one day)



Tropomi SWIR housekeeping data

orbits : [8306, 8790]
coverage : 2019-05-21 / 2019-06-25
created : 2023-08-21T08:46:08

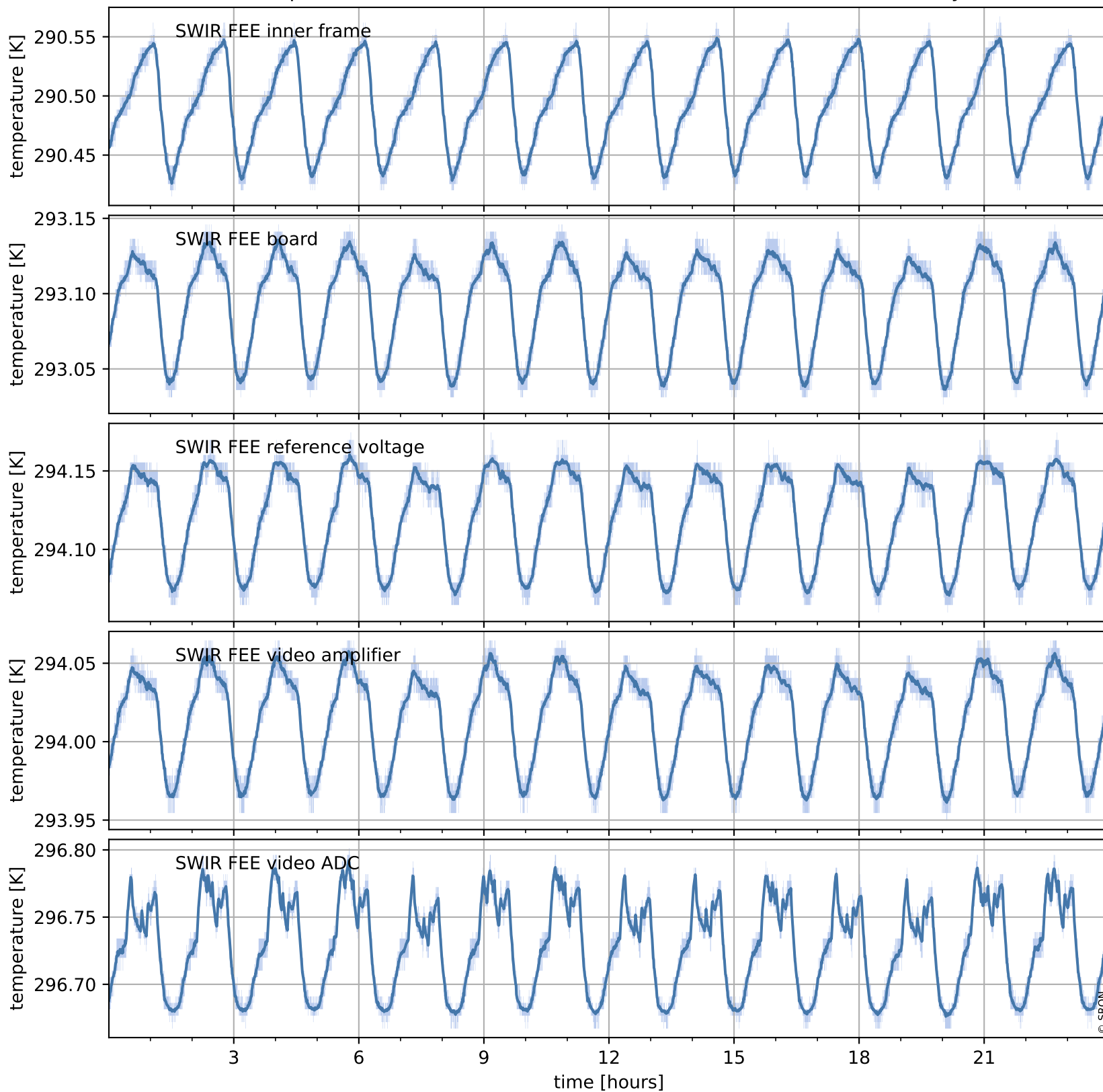
Current and duty cycle of 3 heaters relevant for SWIR (last month)



Tropomi SWIR housekeeping data

orbits : [8777, 8790]
coverage : 2019-06-24 / 2019-06-25
created : 2023-08-21T08:46:08

Temperature of sensors at the SWIR front-end electronics (one day)



Tropomi SWIR housekeeping data

orbits : [8306, 8790]
coverage : 2019-05-21 / 2019-06-25
created : 2023-08-21T08:46:09

Temperature of sensors at the SWIR front-end electronics (last month)

