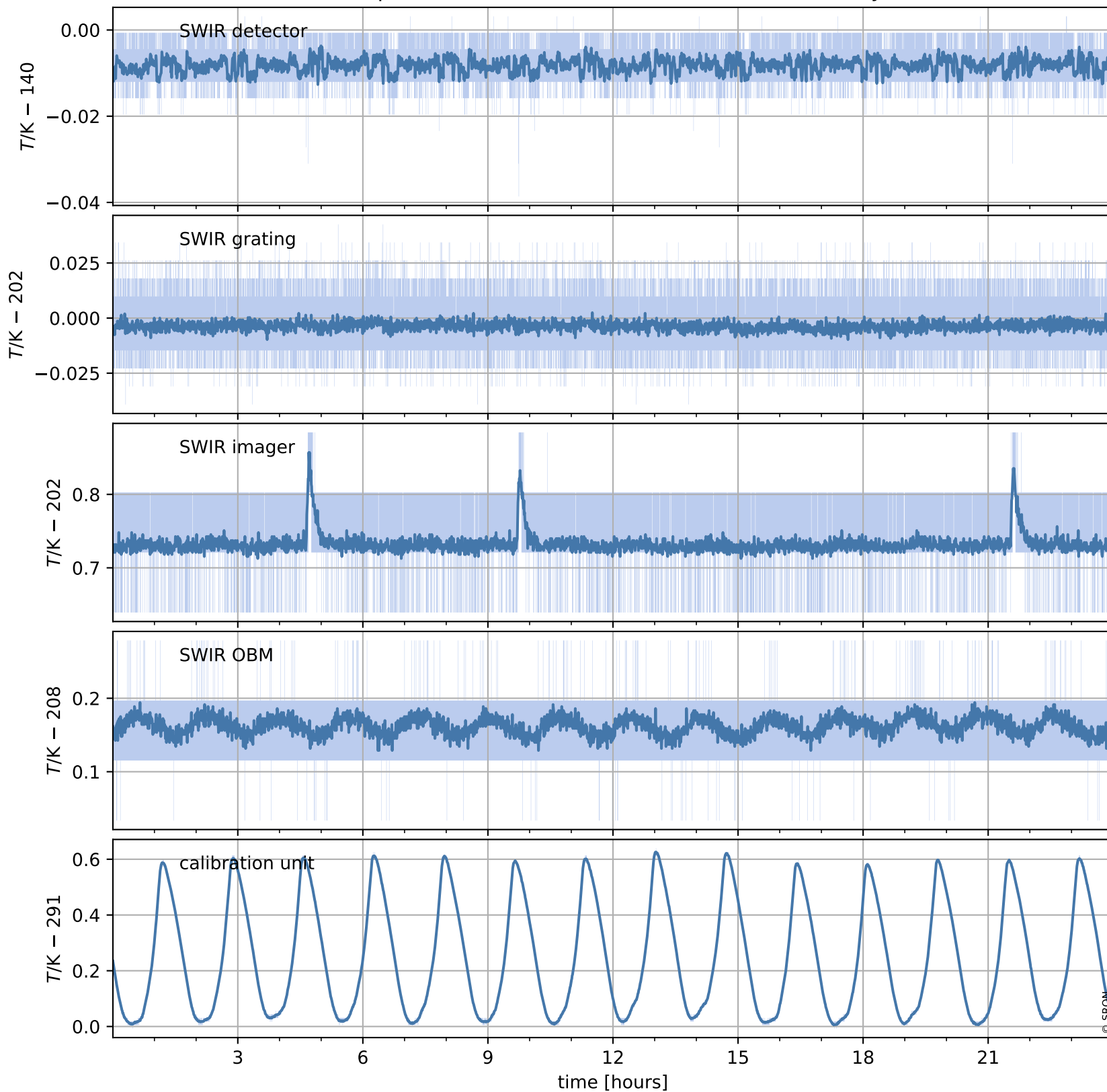


Tropomi SWIR housekeeping data

orbits : [8976, 8989]
coverage : 2019-07-08 / 2019-07-09
created : 2023-08-21T08:46:39

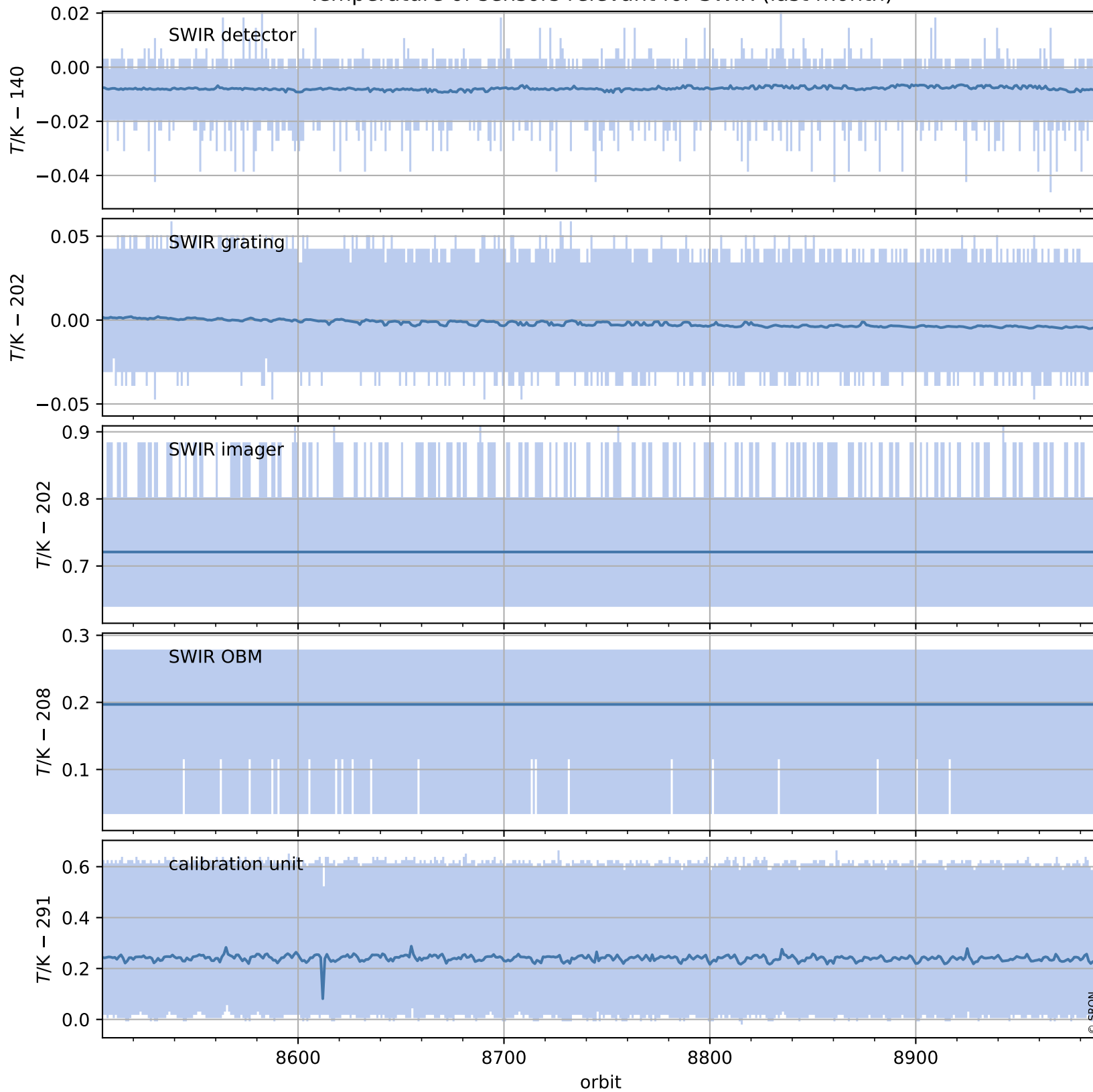
Temperature of sensors relevant for SWIR (one day)



Tropomi SWIR housekeeping data

orbits : [8505, 8989]
coverage : 2019-06-04 / 2019-07-09
created : 2023-08-21T08:46:40

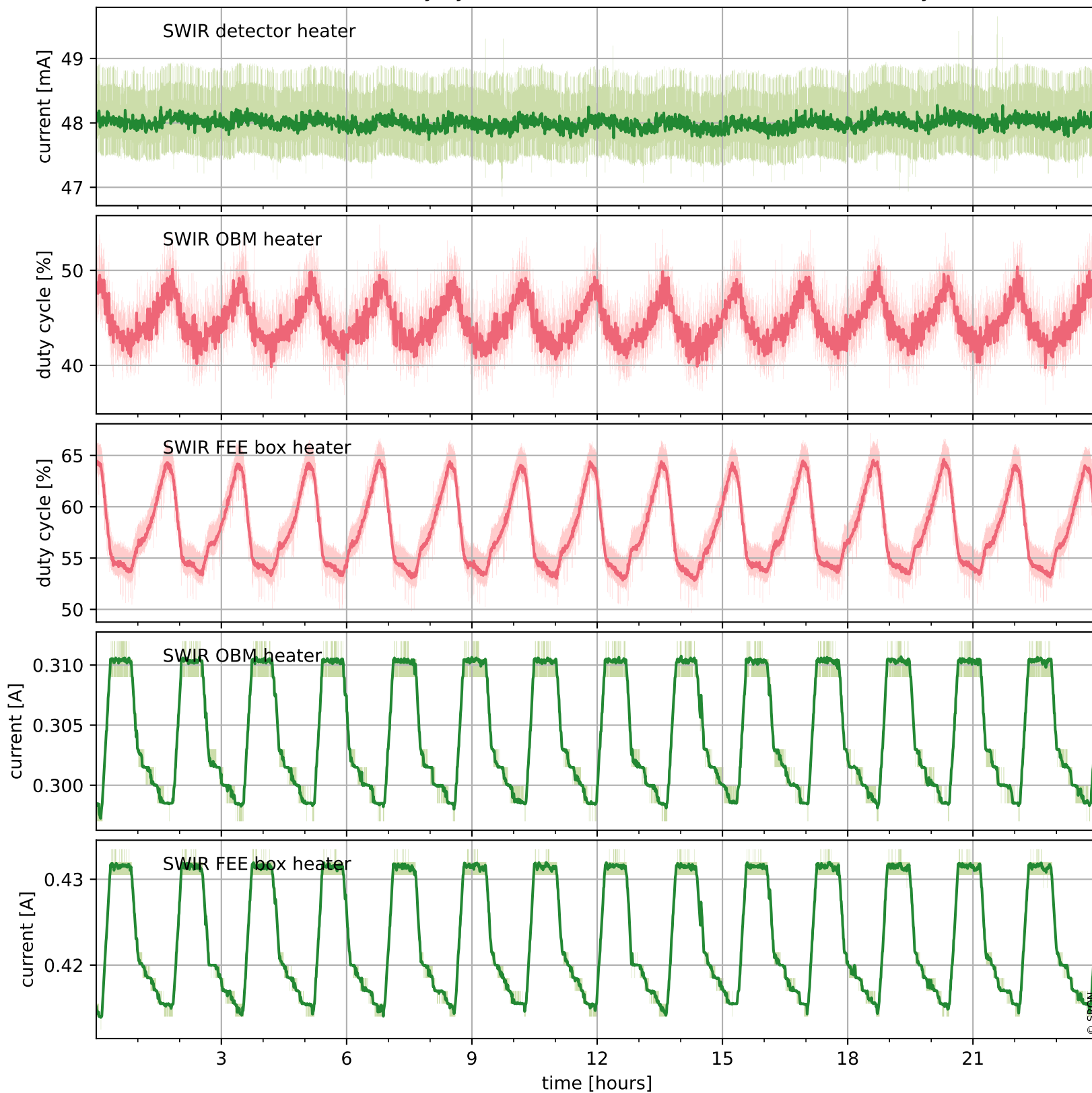
Temperature of sensors relevant for SWIR (last month)



Tropomi SWIR housekeeping data

orbits : [8976, 8989]
coverage : 2019-07-08 / 2019-07-09
created : 2023-08-21T08:46:40

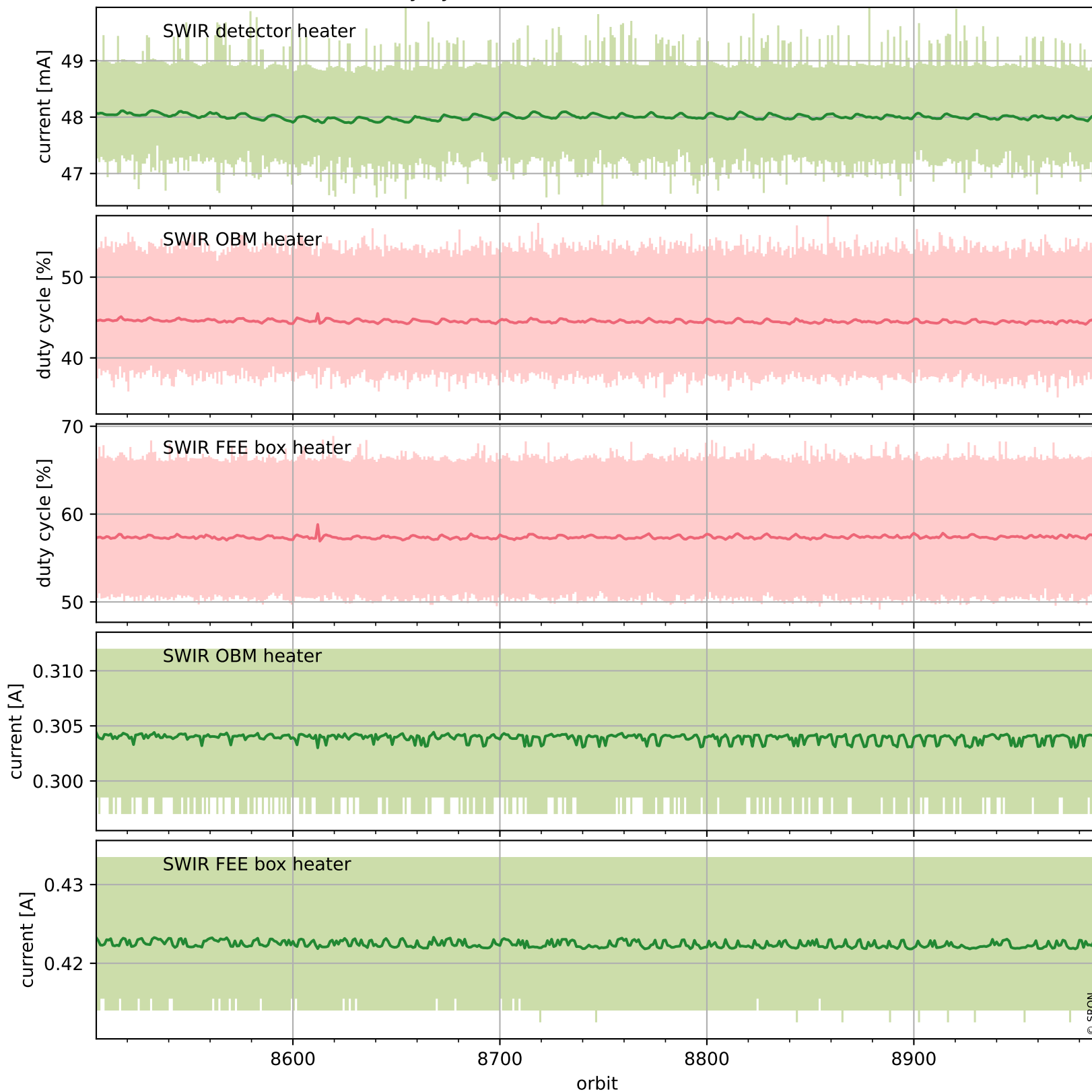
Current and duty cycle of 3 heaters relevant for SWIR (one day)



Tropomi SWIR housekeeping data

orbits : [8505, 8989]
coverage : 2019-06-04 / 2019-07-09
created : 2023-08-21T08:46:41

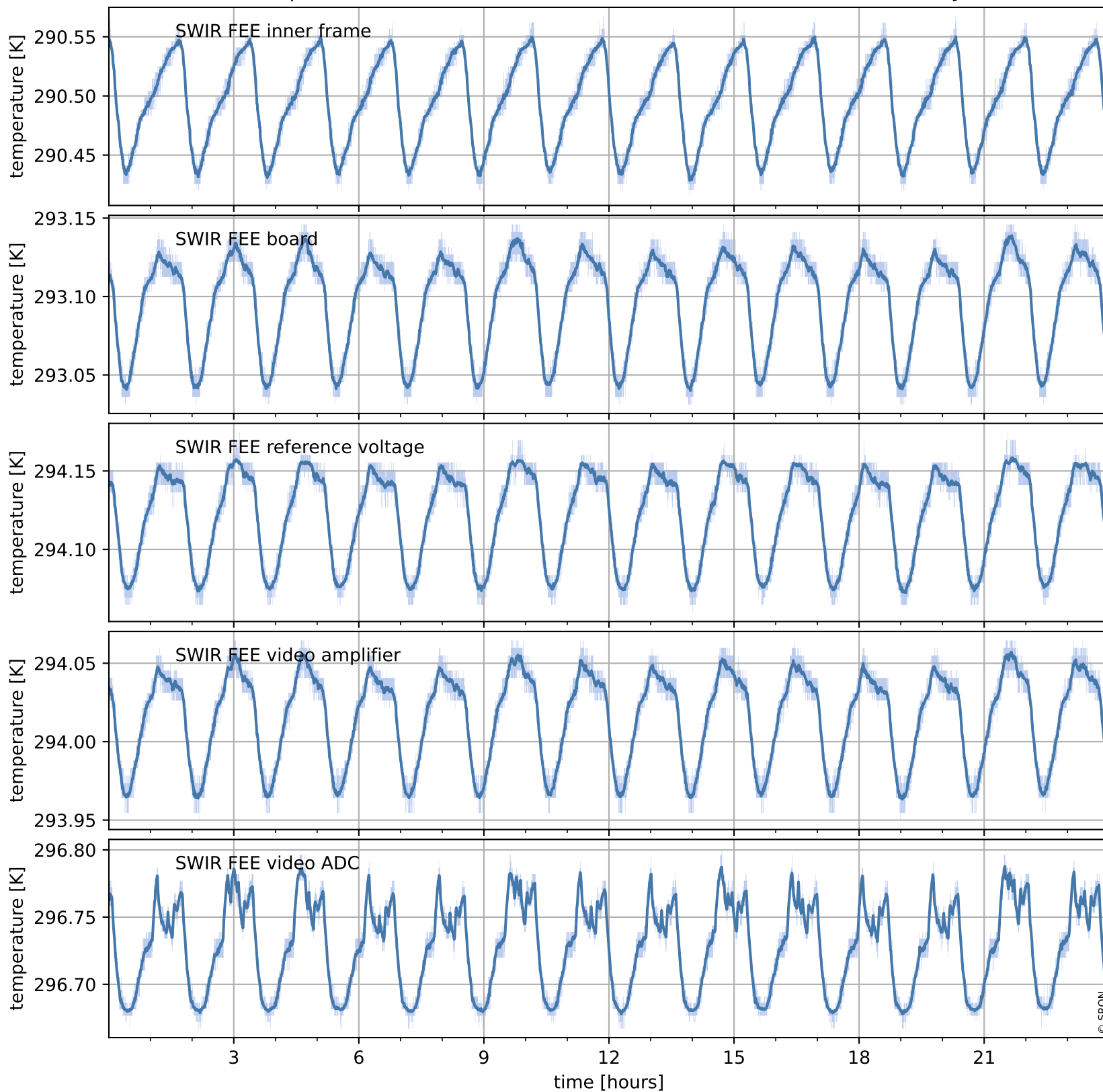
Current and duty cycle of 3 heaters relevant for SWIR (last month)



Tropomi SWIR housekeeping data

orbits : [8976, 8989]
coverage : 2019-07-08 / 2019-07-09
created : 2023-08-21T08:46:41

Temperature of sensors at the SWIR front-end electronics (one day)



Tropomi SWIR housekeeping data

orbits : [8505, 8989]
coverage : 2019-06-04 / 2019-07-09
created : 2023-08-21T08:46:41

Temperature of sensors at the SWIR front-end electronics (last month)

