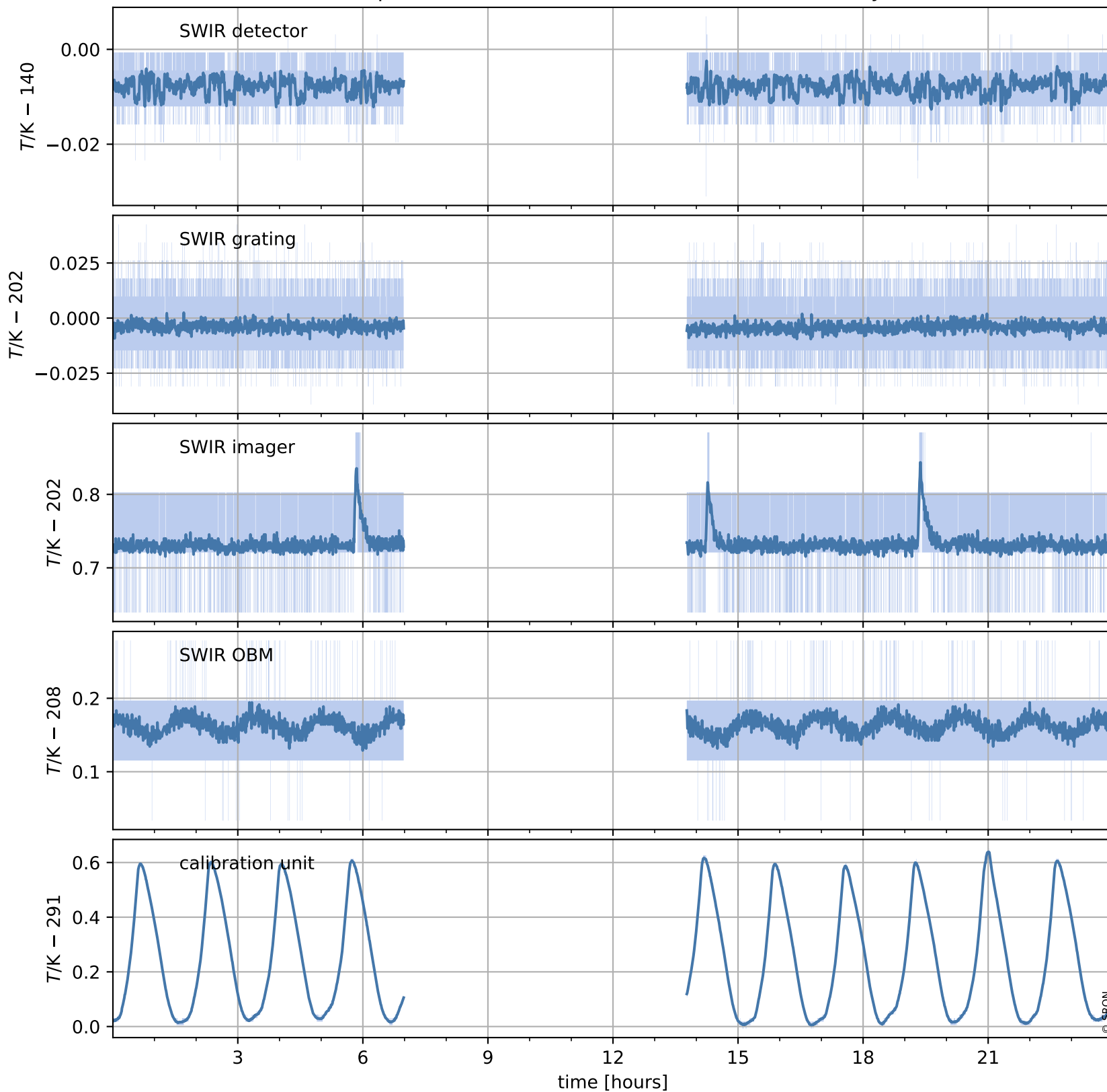


# Tropomi SWIR housekeeping data

orbits : [9075, 9088]  
coverage : 2019-07-15 / 2019-07-16  
created : 2023-08-21T08:46:56

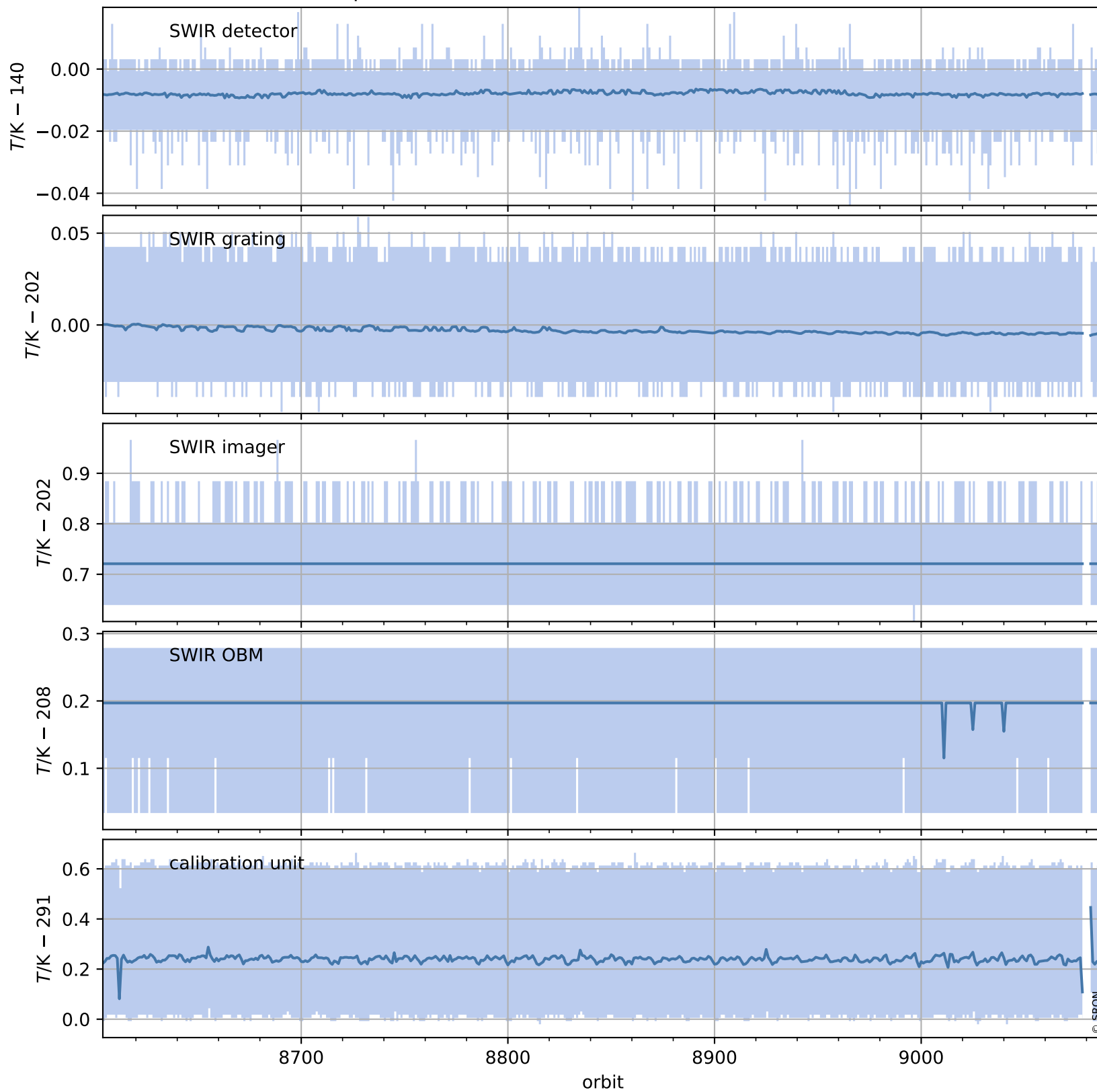
## Temperature of sensors relevant for SWIR (one day)



# Tropomi SWIR housekeeping data

orbits : [8604, 9088]  
coverage : 2019-06-11 / 2019-07-16  
created : 2023-08-21T08:46:56

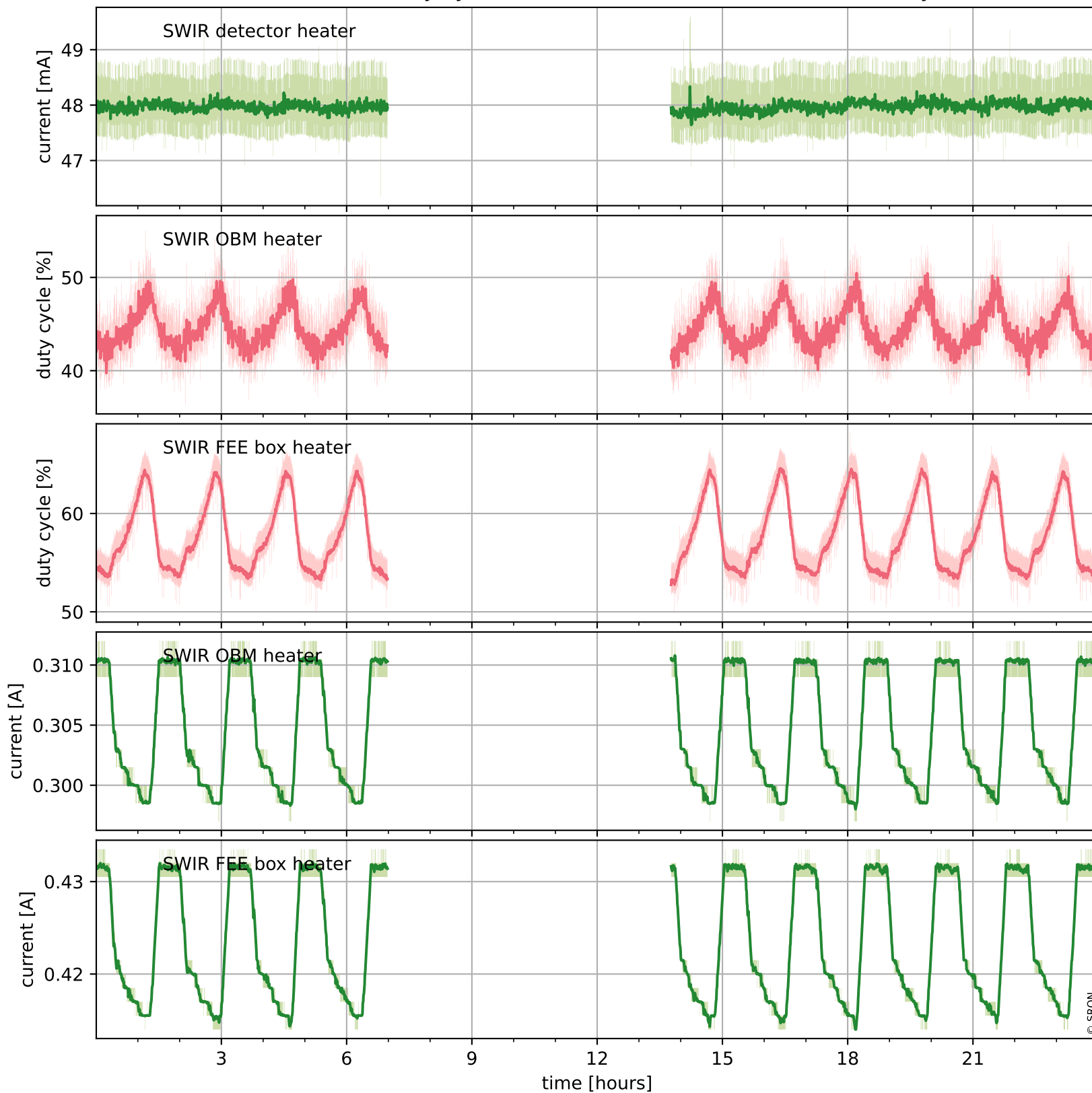
## Temperature of sensors relevant for SWIR (last month)



# Tropomi SWIR housekeeping data

orbits : [9075, 9088]  
coverage : 2019-07-15 / 2019-07-16  
created : 2023-08-21T08:46:57

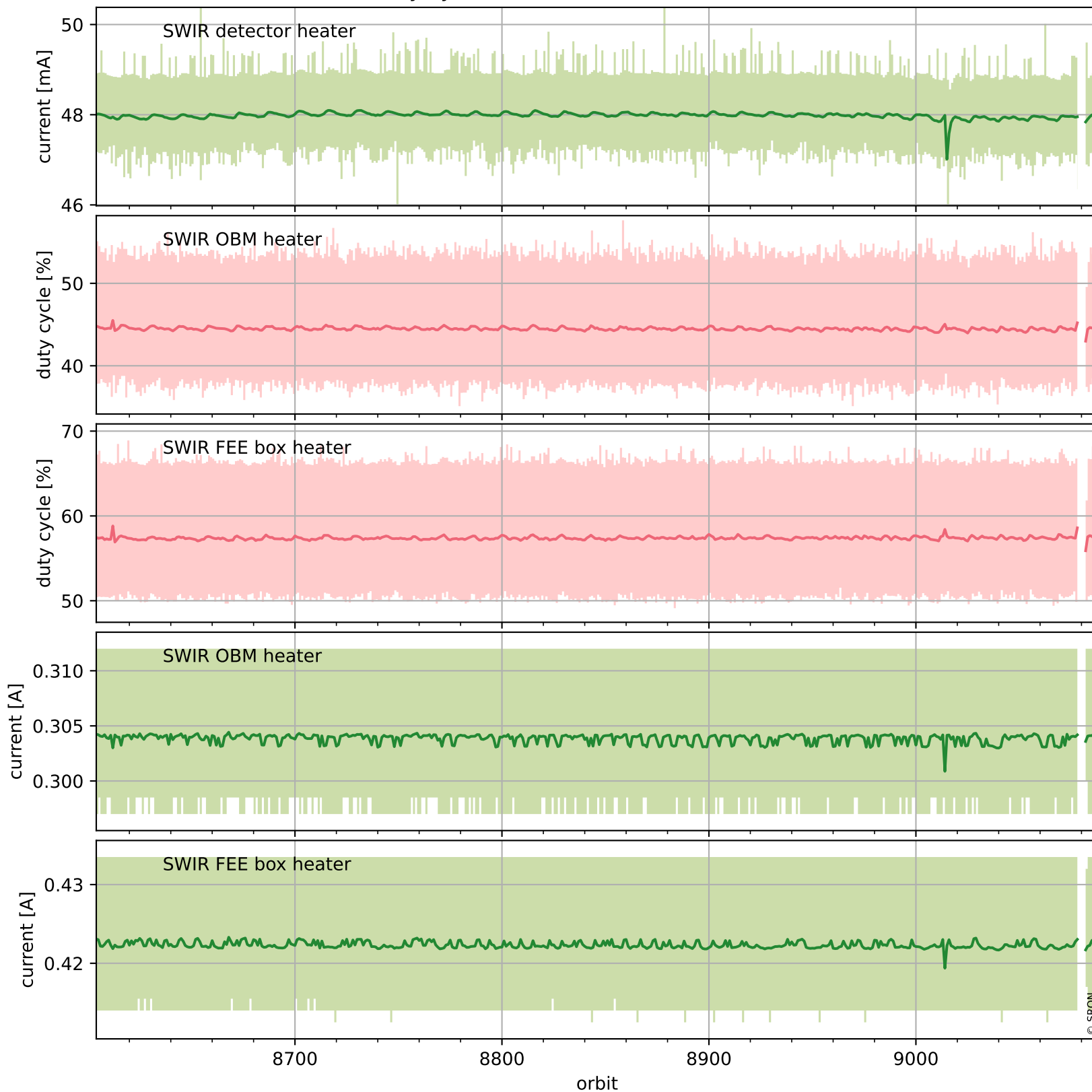
## Current and duty cycle of 3 heaters relevant for SWIR (one day)



# Tropomi SWIR housekeeping data

orbits : [8604, 9088]  
coverage : 2019-06-11 / 2019-07-16  
created : 2023-08-21T08:46:57

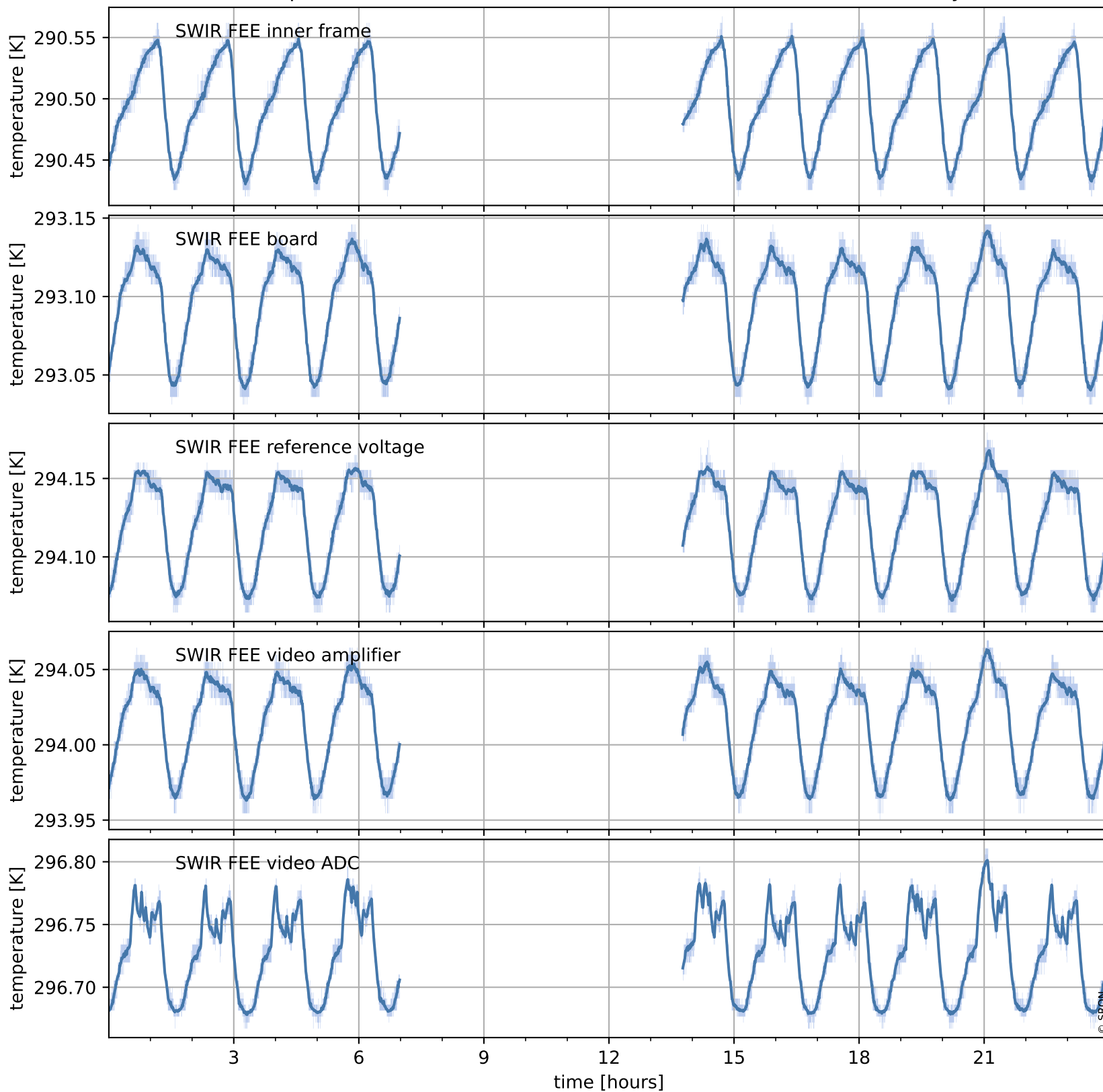
## Current and duty cycle of 3 heaters relevant for SWIR (last month)



# Tropomi SWIR housekeeping data

orbits : [9075, 9088]  
coverage : 2019-07-15 / 2019-07-16  
created : 2023-08-21T08:46:57

## Temperature of sensors at the SWIR front-end electronics (one day)



# Tropomi SWIR housekeeping data

orbits : [8604, 9088]  
coverage : 2019-06-11 / 2019-07-16  
created : 2023-08-21T08:46:58

## Temperature of sensors at the SWIR front-end electronics (last month)

