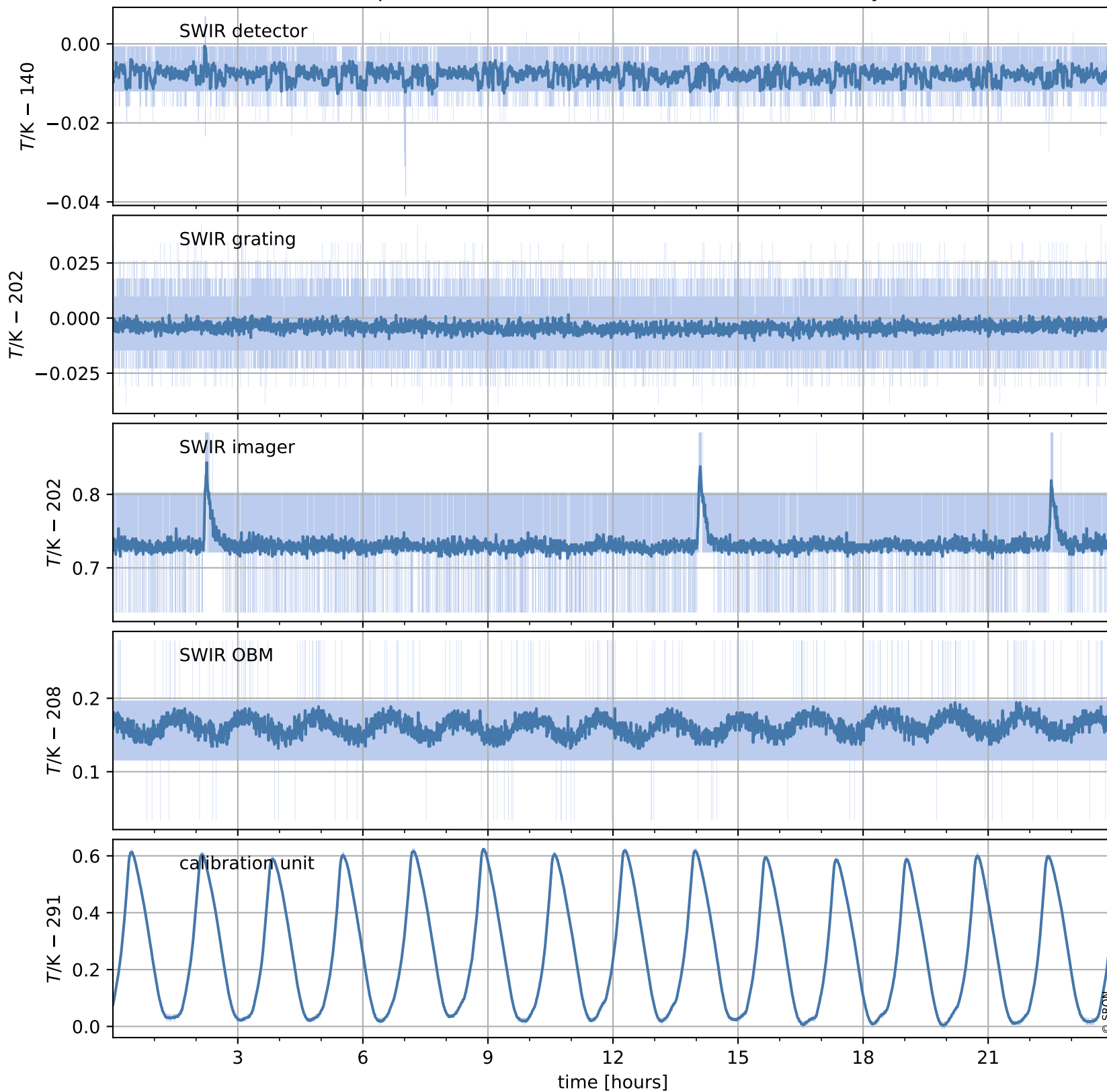


Tropomi SWIR housekeeping data

orbits : [9160, 9173]
coverage : 2019-07-21 / 2019-07-22
created : 2023-08-21T08:47:10

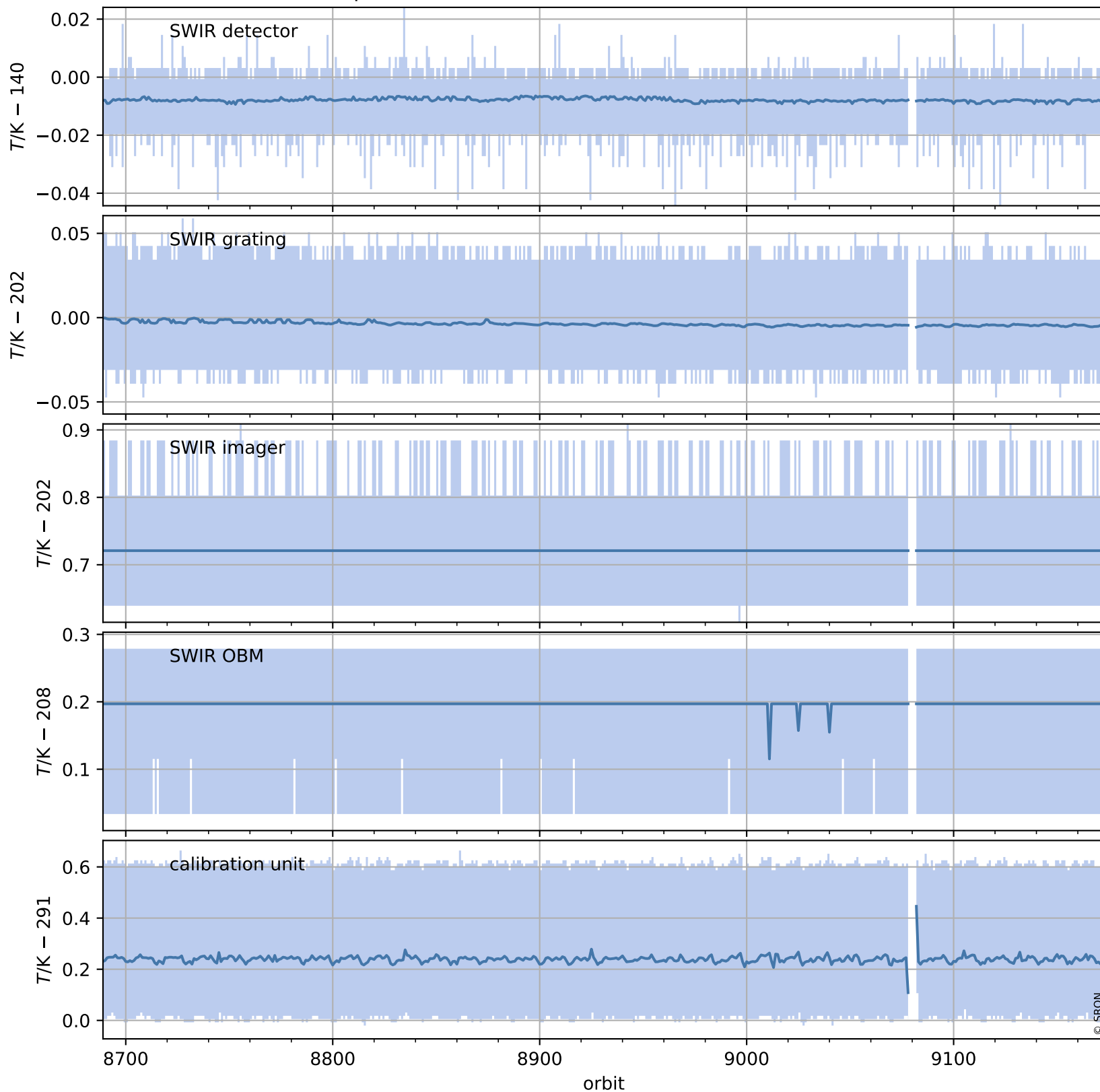
Temperature of sensors relevant for SWIR (one day)



Tropomi SWIR housekeeping data

orbits : [8689, 9173]
coverage : 2019-06-17 / 2019-07-22
created : 2023-08-21T08:47:10

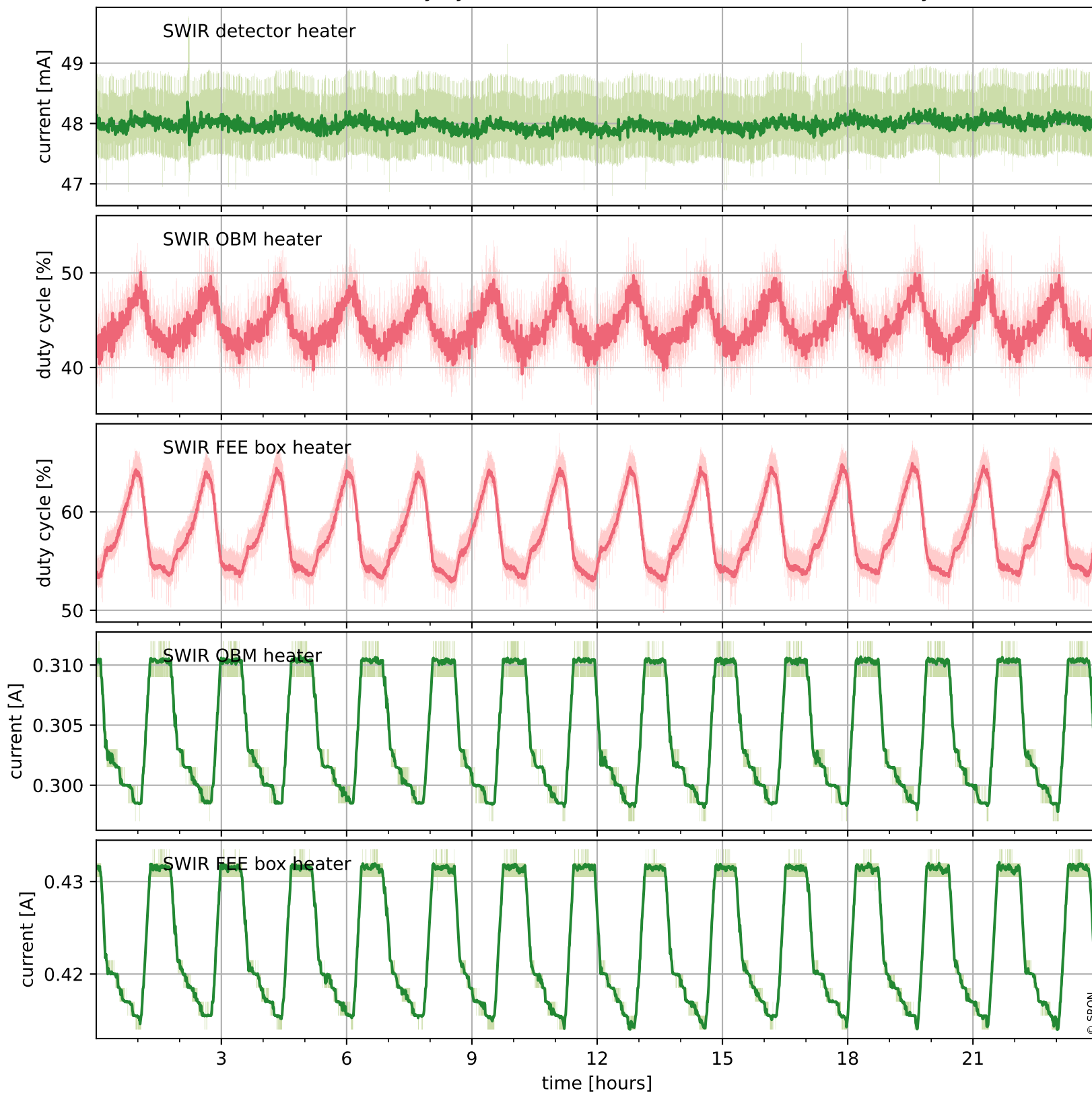
Temperature of sensors relevant for SWIR (last month)



Tropomi SWIR housekeeping data

orbits : [9160, 9173]
coverage : 2019-07-21 / 2019-07-22
created : 2023-08-21T08:47:11

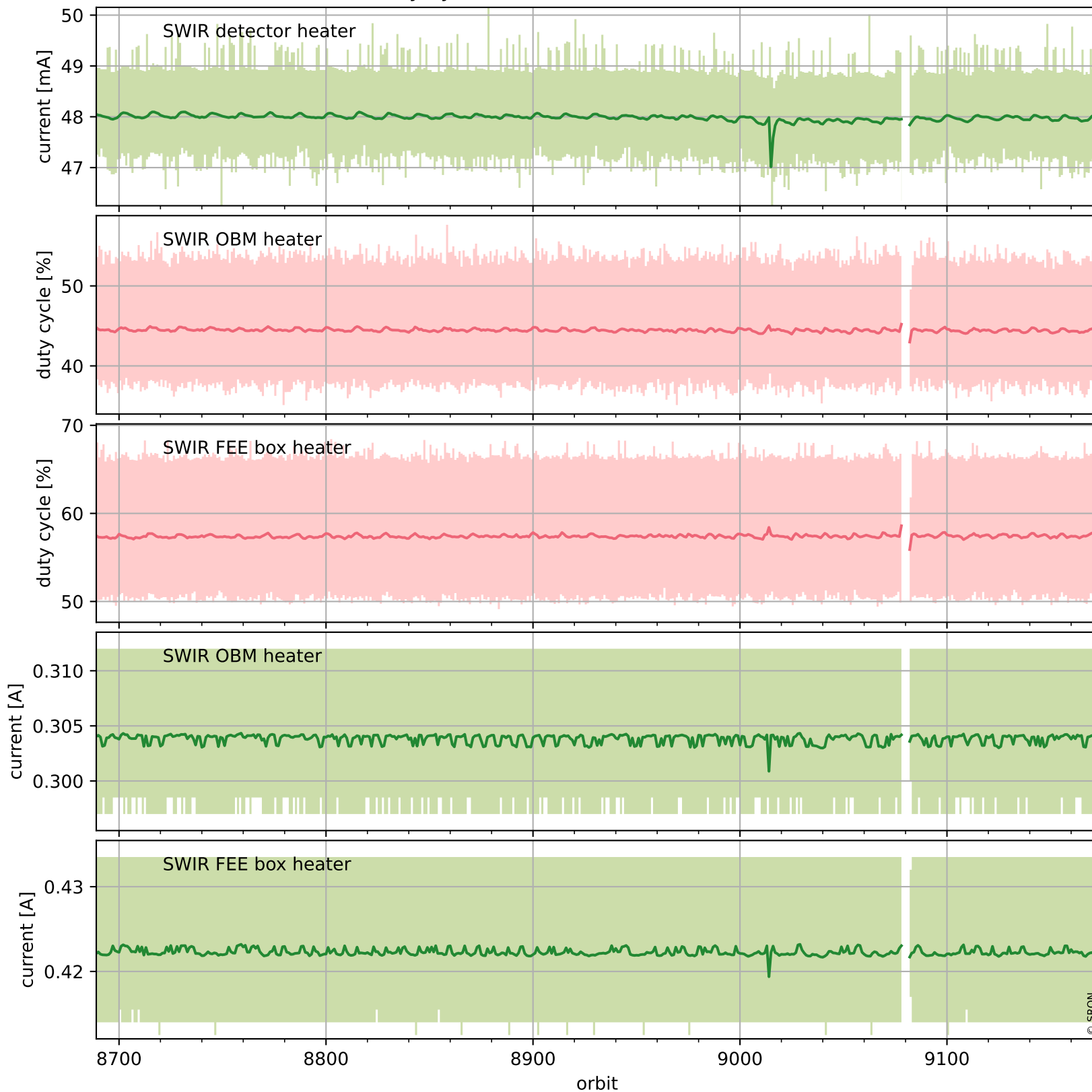
Current and duty cycle of 3 heaters relevant for SWIR (one day)



Tropomi SWIR housekeeping data

orbits : [8689, 9173]
coverage : 2019-06-17 / 2019-07-22
created : 2023-08-21T08:47:11

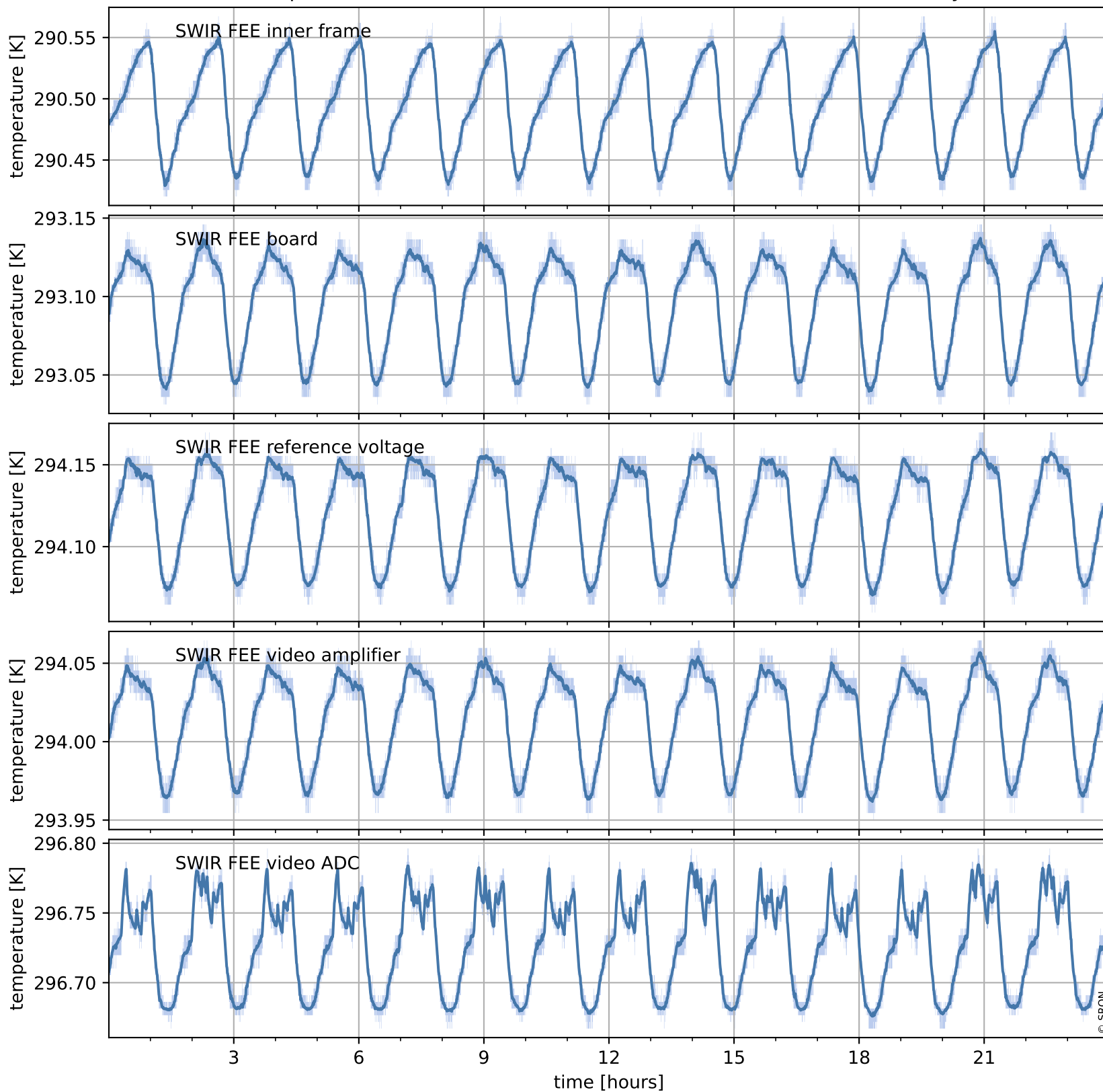
Current and duty cycle of 3 heaters relevant for SWIR (last month)



Tropomi SWIR housekeeping data

orbits : [9160, 9173]
coverage : 2019-07-21 / 2019-07-22
created : 2023-08-21T08:47:11

Temperature of sensors at the SWIR front-end electronics (one day)



Tropomi SWIR housekeeping data

orbits : [8689, 9173]
coverage : 2019-06-17 / 2019-07-22
created : 2023-08-21T08:47:12

Temperature of sensors at the SWIR front-end electronics (last month)

