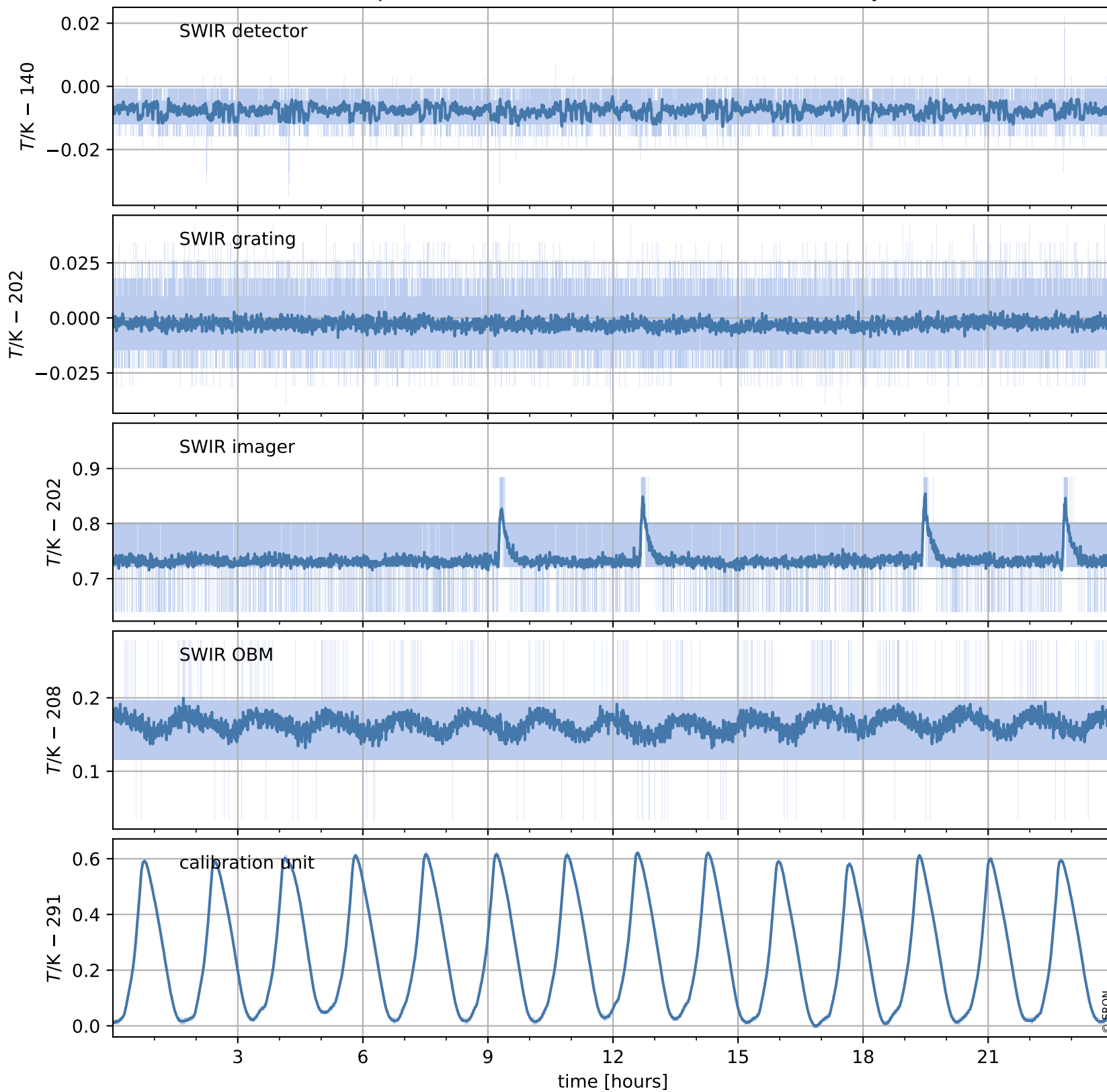


# Tropomi SWIR housekeeping data

orbits : [9373, 9386]  
coverage : 2019-08-05 / 2019-08-06  
created : 2023-08-21T08:47:45

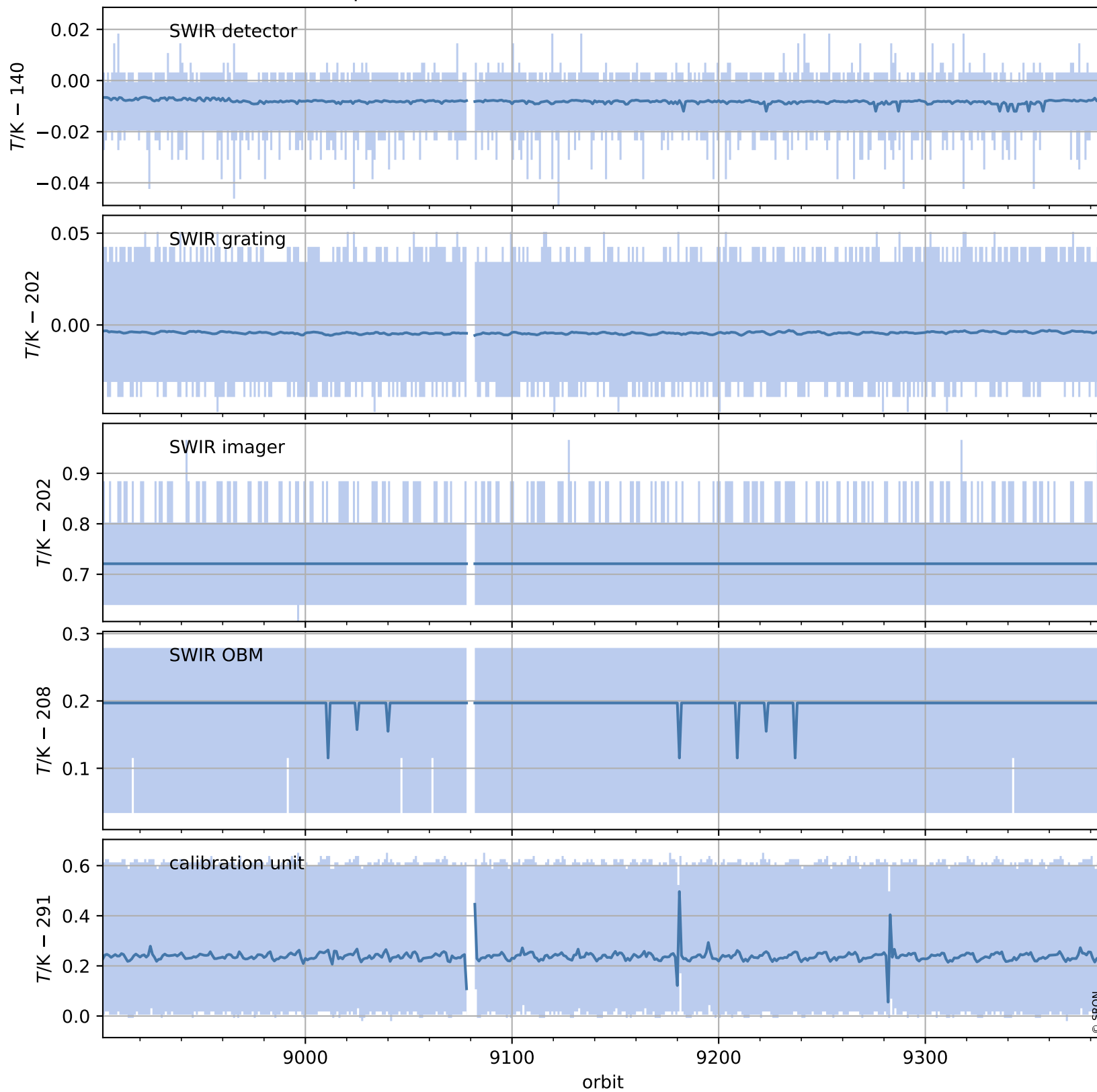
## Temperature of sensors relevant for SWIR (one day)



# Tropomi SWIR housekeeping data

orbits : [8902, 9386]  
coverage : 2019-07-02 / 2019-08-06  
created : 2023-08-21T08:47:46

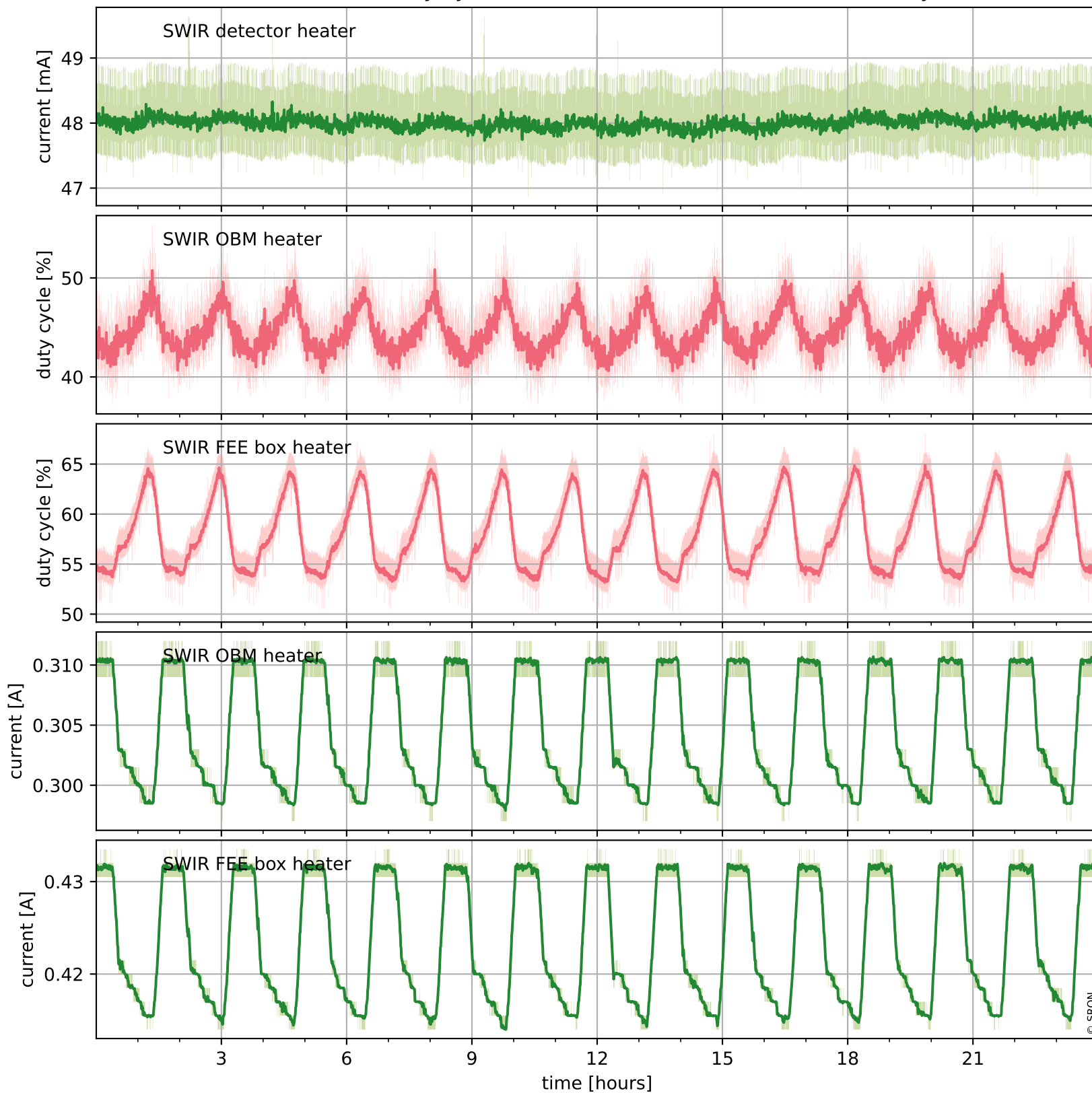
## Temperature of sensors relevant for SWIR (last month)



# Tropomi SWIR housekeeping data

orbits : [9373, 9386]  
coverage : 2019-08-05 / 2019-08-06  
created : 2023-08-21T08:47:46

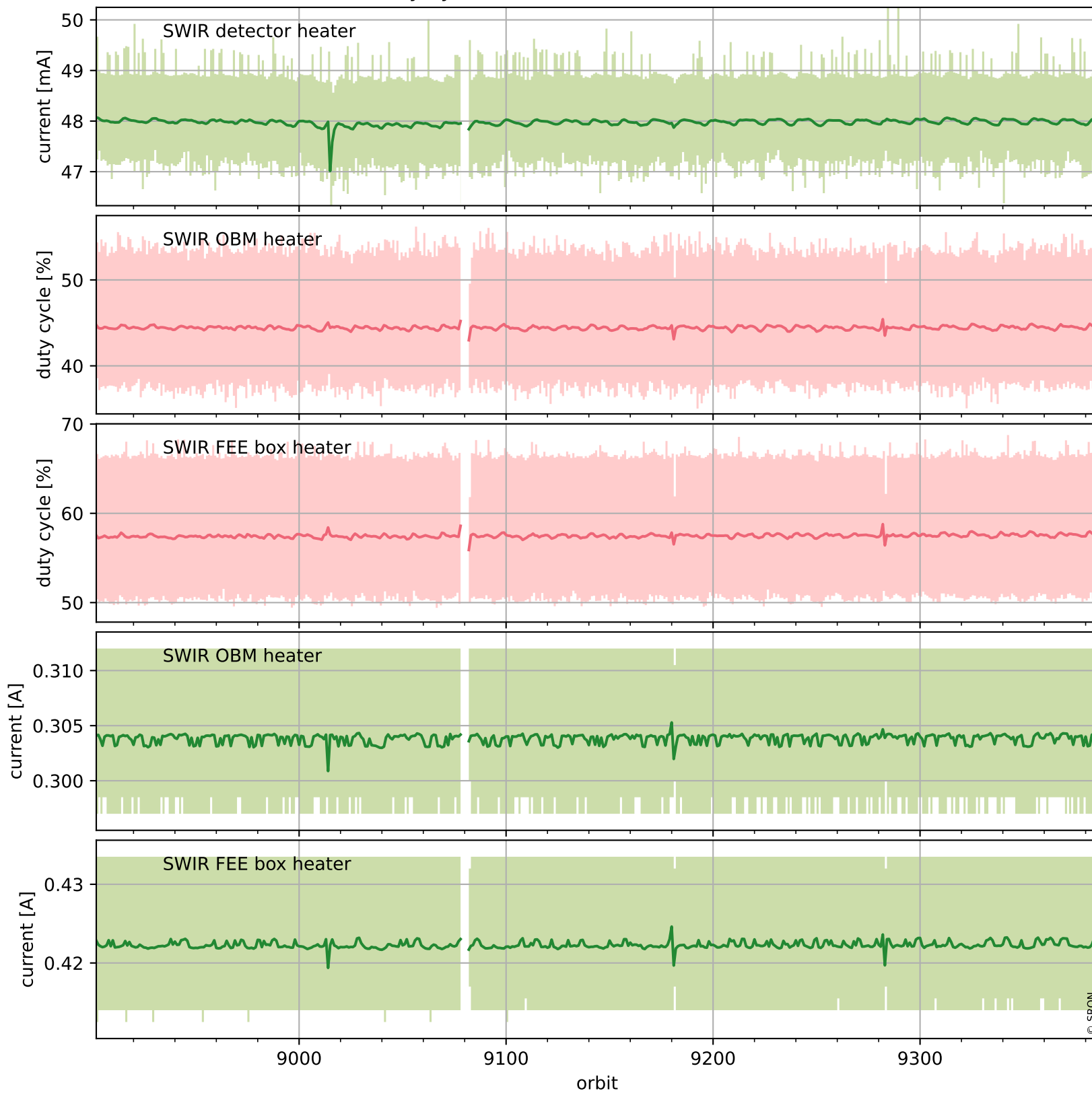
## Current and duty cycle of 3 heaters relevant for SWIR (one day)



# Tropomi SWIR housekeeping data

orbits : [8902, 9386]  
coverage : 2019-07-02 / 2019-08-06  
created : 2023-08-21T08:47:46

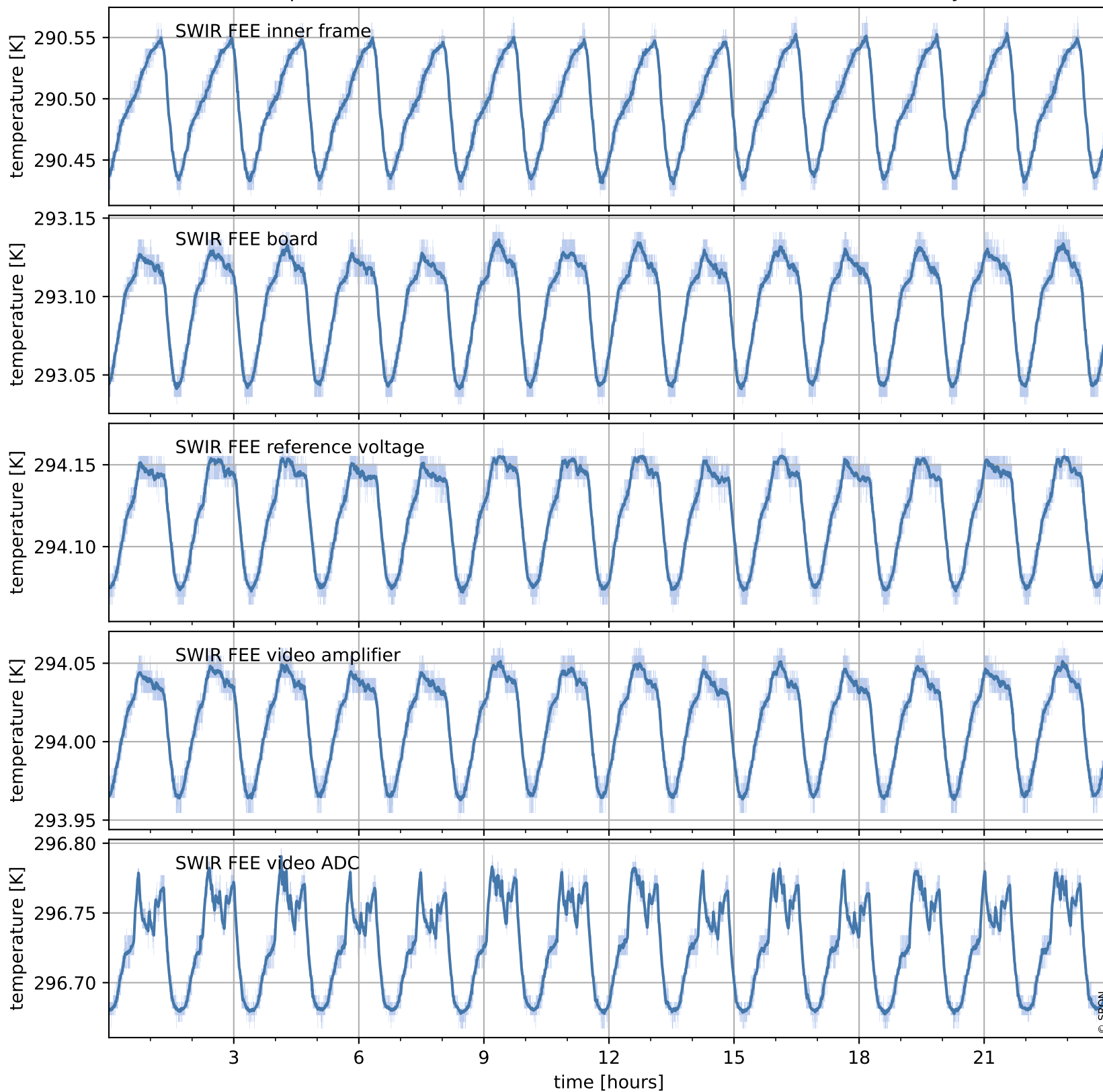
## Current and duty cycle of 3 heaters relevant for SWIR (last month)



# Tropomi SWIR housekeeping data

orbits : [9373, 9386]  
coverage : 2019-08-05 / 2019-08-06  
created : 2023-08-21T08:47:47

## Temperature of sensors at the SWIR front-end electronics (one day)



# Tropomi SWIR housekeeping data

orbits : [8902, 9386]  
coverage : 2019-07-02 / 2019-08-06  
created : 2023-08-21T08:47:47

## Temperature of sensors at the SWIR front-end electronics (last month)

