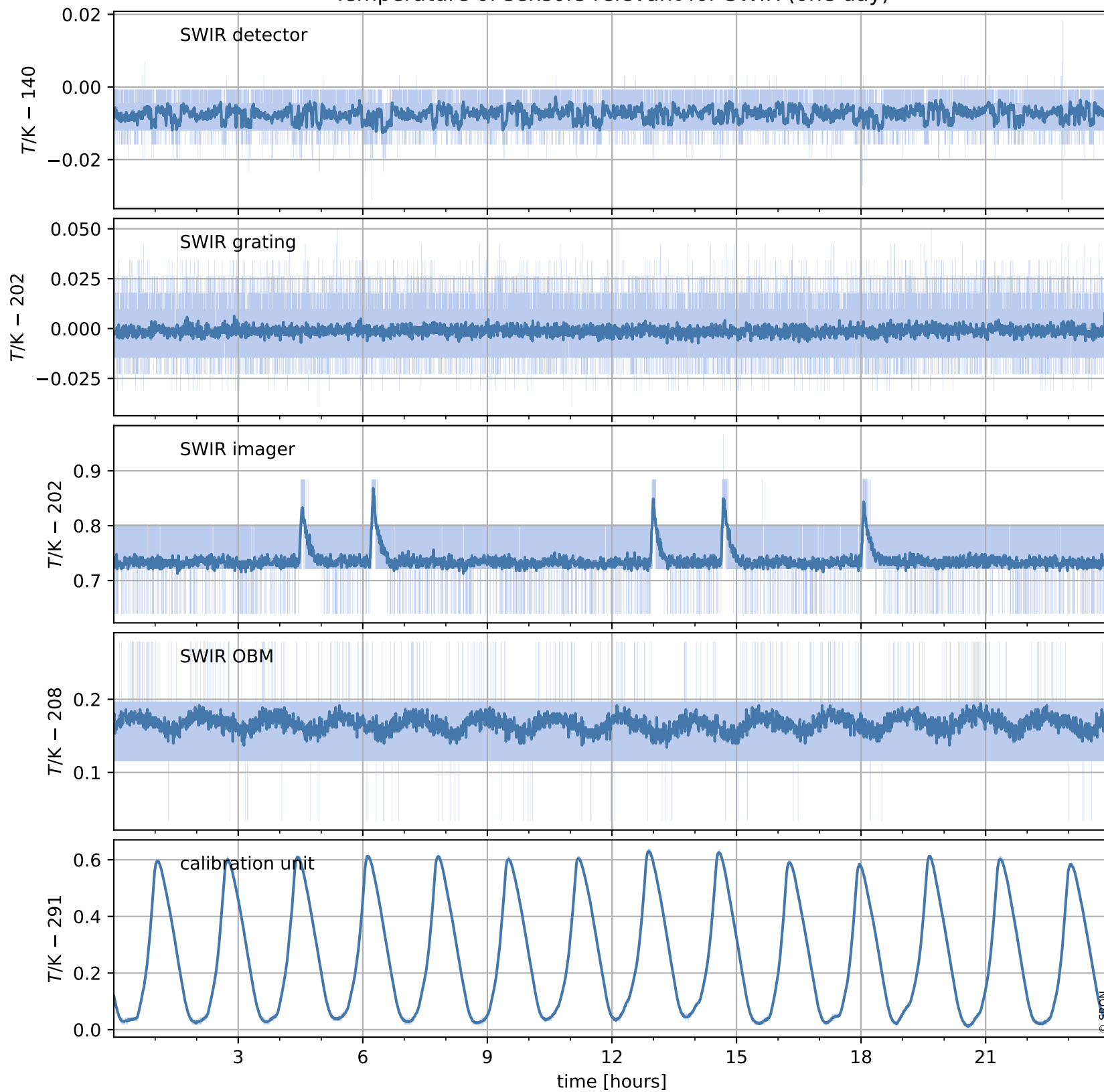


# Tropomi SWIR housekeeping data

orbits : [9586, 9599]  
coverage : 2019-08-20 / 2019-08-21  
created : 2023-08-21T08:48:20

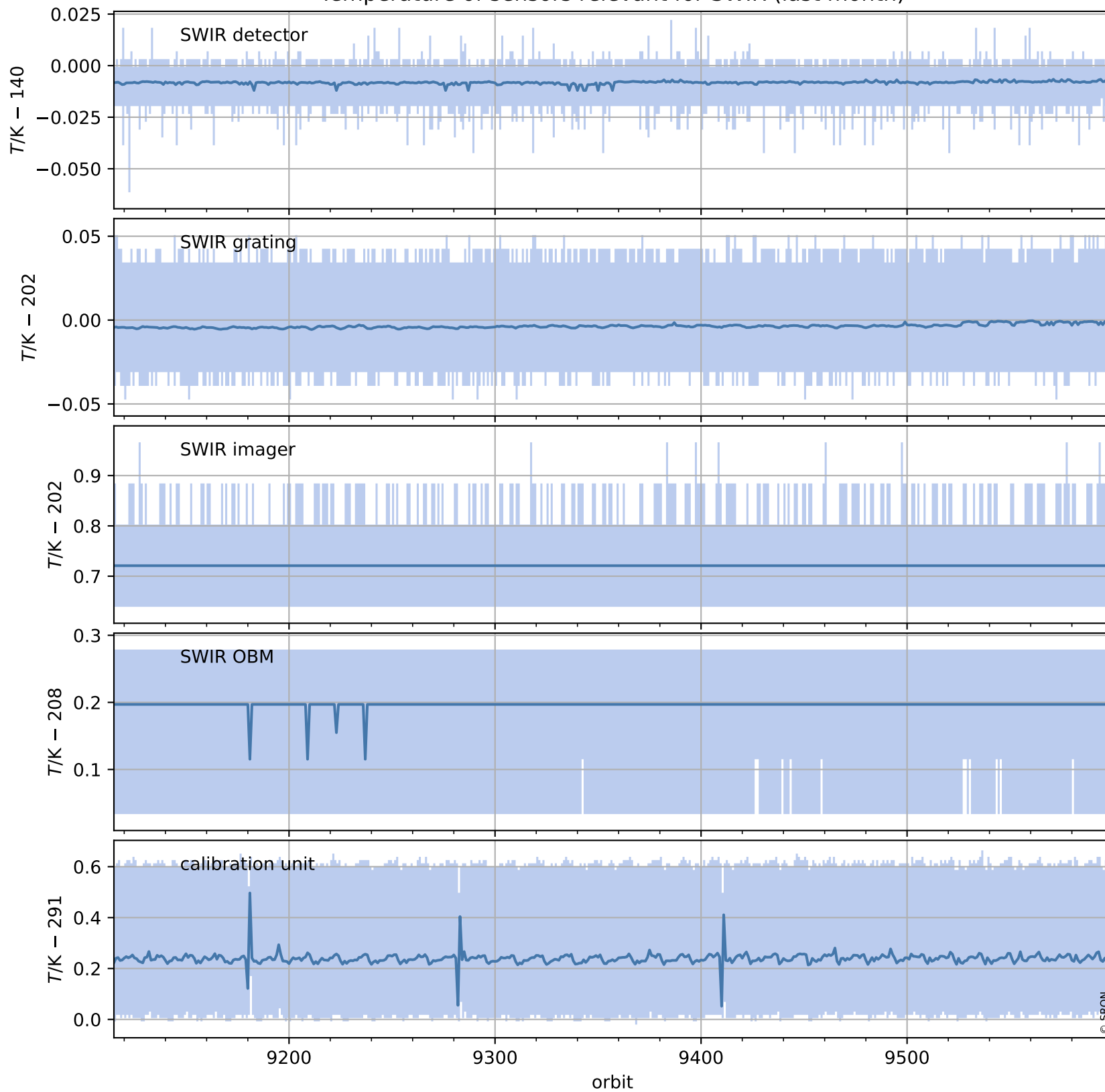
## Temperature of sensors relevant for SWIR (one day)



# Tropomi SWIR housekeeping data

orbits : [9115, 9599]  
coverage : 2019-07-17 / 2019-08-21  
created : 2023-08-21T08:48:21

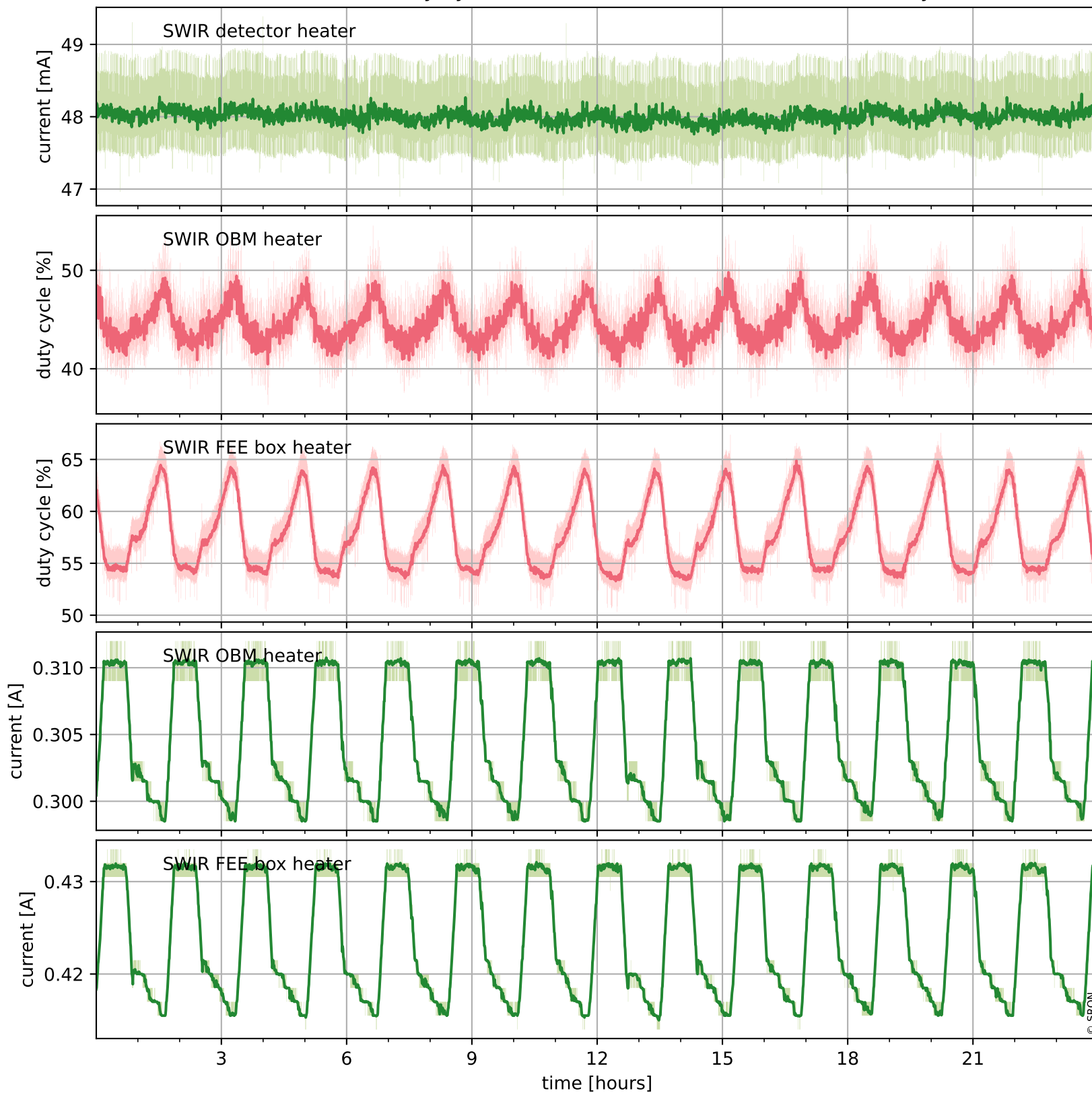
## Temperature of sensors relevant for SWIR (last month)



# Tropomi SWIR housekeeping data

orbits : [9586, 9599]  
coverage : 2019-08-20 / 2019-08-21  
created : 2023-08-21T08:48:21

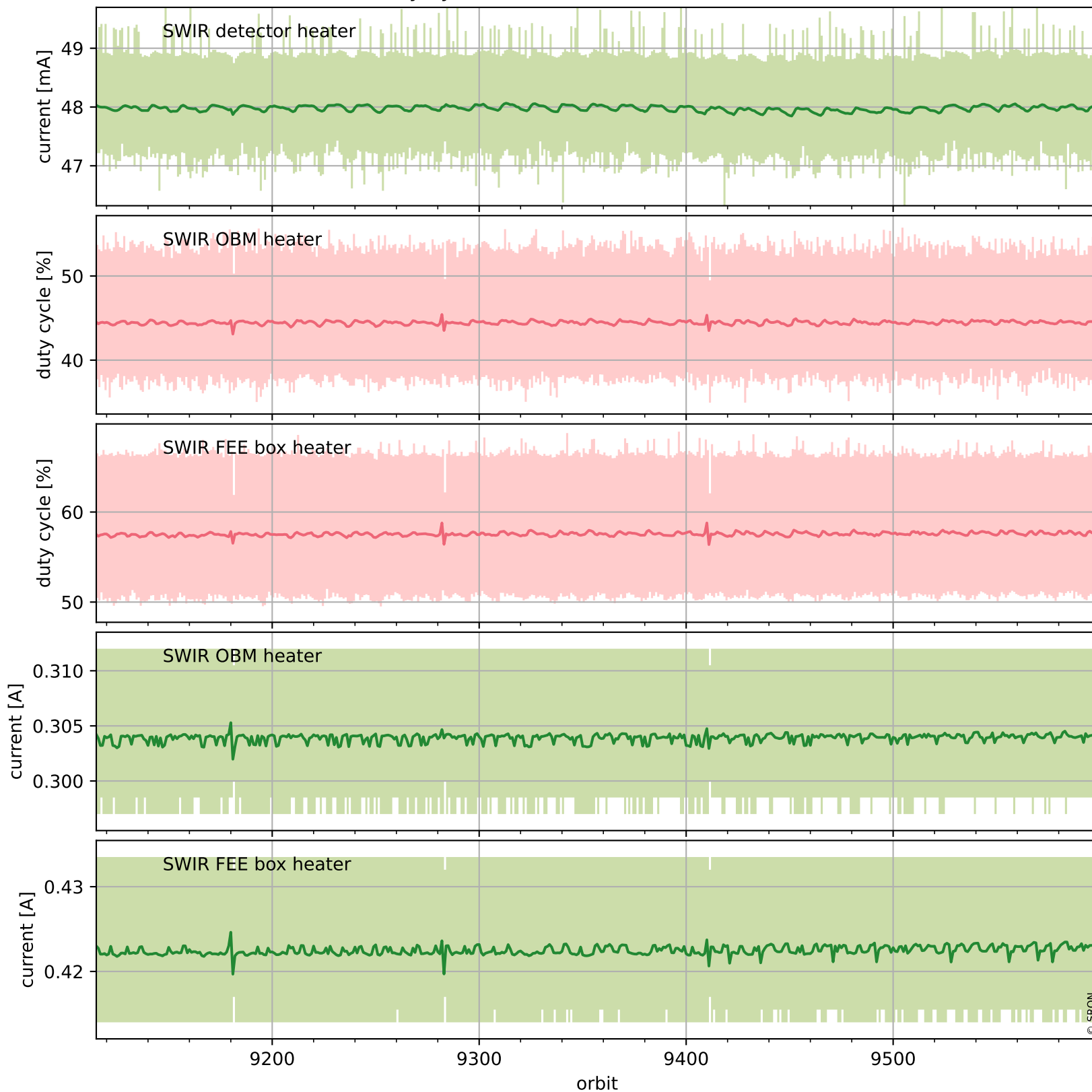
## Current and duty cycle of 3 heaters relevant for SWIR (one day)



# Tropomi SWIR housekeeping data

orbits : [9115, 9599]  
coverage : 2019-07-17 / 2019-08-21  
created : 2023-08-21T08:48:21

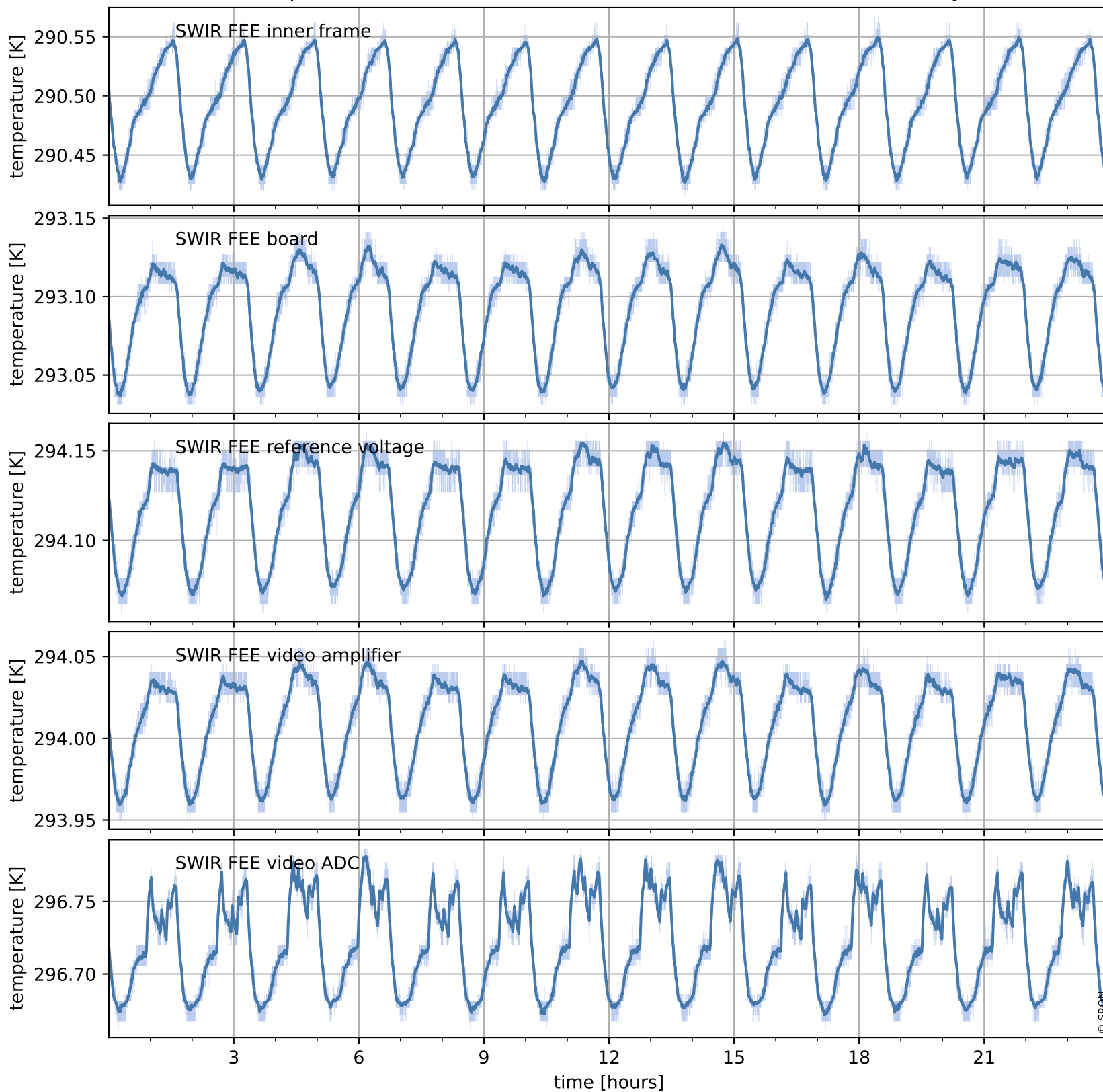
## Current and duty cycle of 3 heaters relevant for SWIR (last month)



# Tropomi SWIR housekeeping data

orbits : [9586, 9599]  
coverage : 2019-08-20 / 2019-08-21  
created : 2023-08-21T08:48:22

## Temperature of sensors at the SWIR front-end electronics (one day)



# Tropomi SWIR housekeeping data

orbits : [9115, 9599]  
coverage : 2019-07-17 / 2019-08-21  
created : 2023-08-21T08:48:22

## Temperature of sensors at the SWIR front-end electronics (last month)

