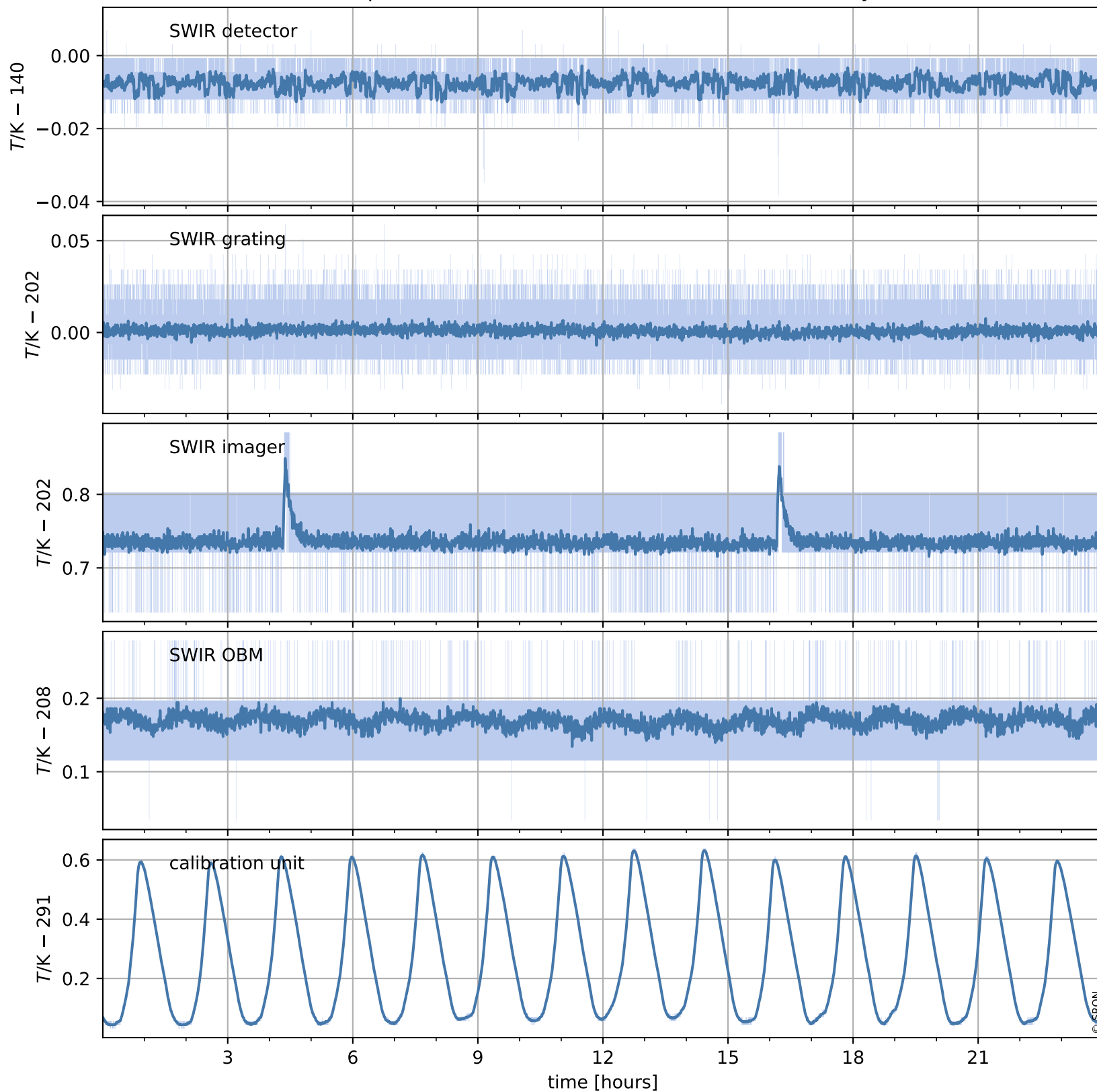


Tropomi SWIR housekeeping data

orbits : [9969, 9982]
coverage : 2019-09-16 / 2019-09-17
created : 2023-08-21T08:49:23

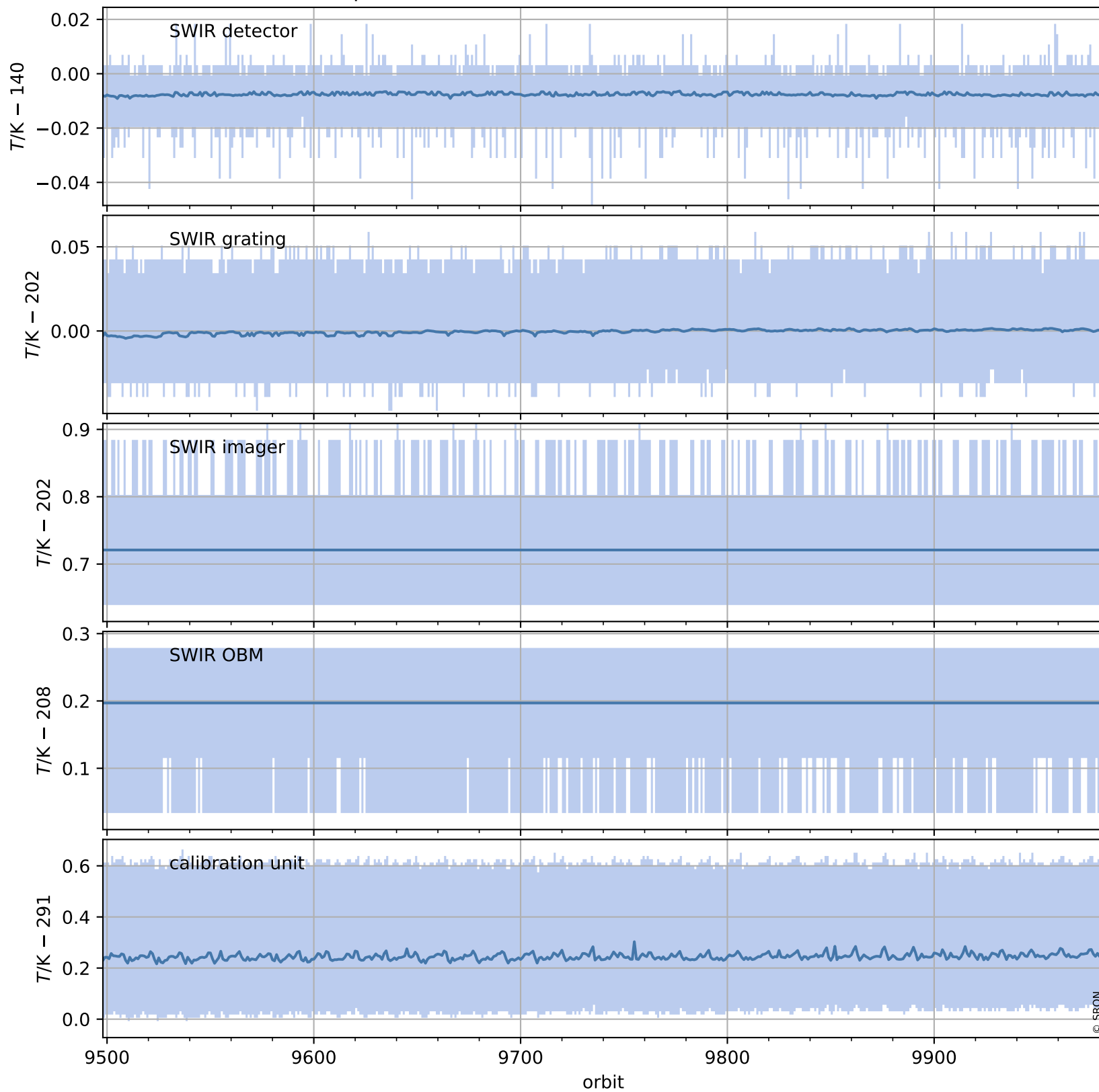
Temperature of sensors relevant for SWIR (one day)



Tropomi SWIR housekeeping data

orbits : [9498, 9982]
coverage : 2019-08-13 / 2019-09-17
created : 2023-08-21T08:49:23

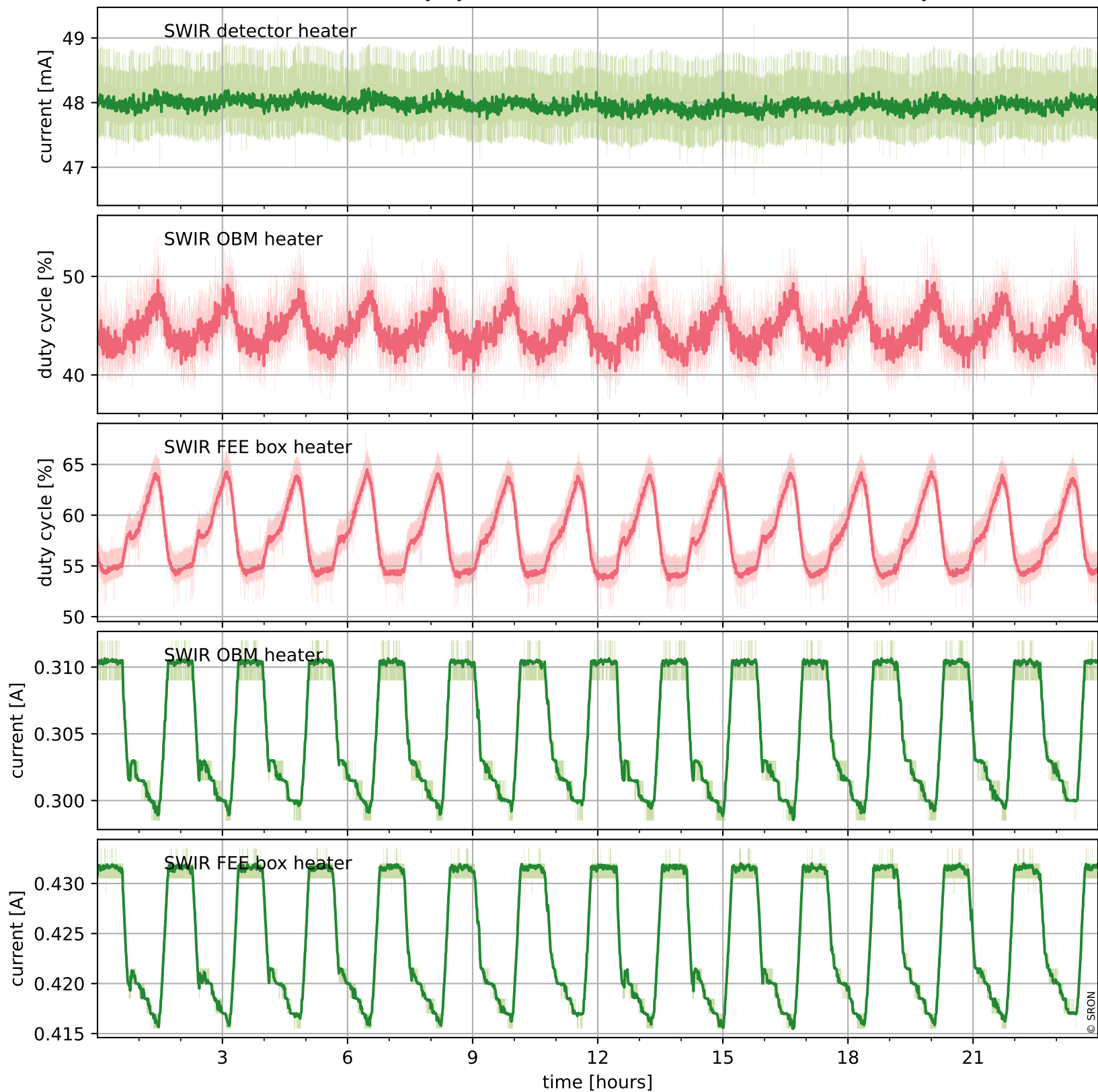
Temperature of sensors relevant for SWIR (last month)



Tropomi SWIR housekeeping data

orbits : [9969, 9982]
coverage : 2019-09-16 / 2019-09-17
created : 2023-08-21T08:49:23

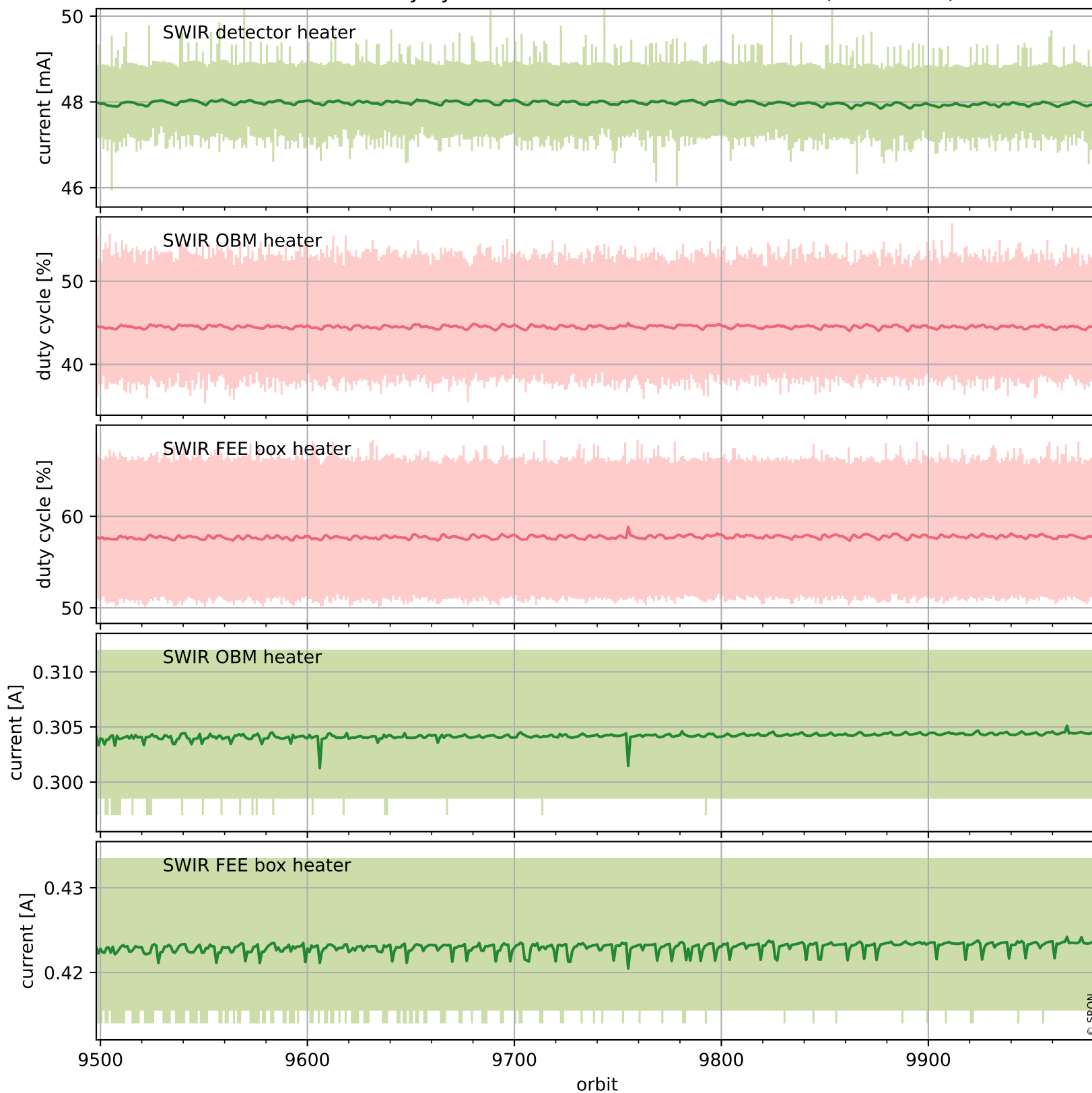
Current and duty cycle of 3 heaters relevant for SWIR (one day)



Tropomi SWIR housekeeping data

orbits : [9498, 9982]
coverage : 2019-08-13 / 2019-09-17
created : 2023-08-21T08:49:24

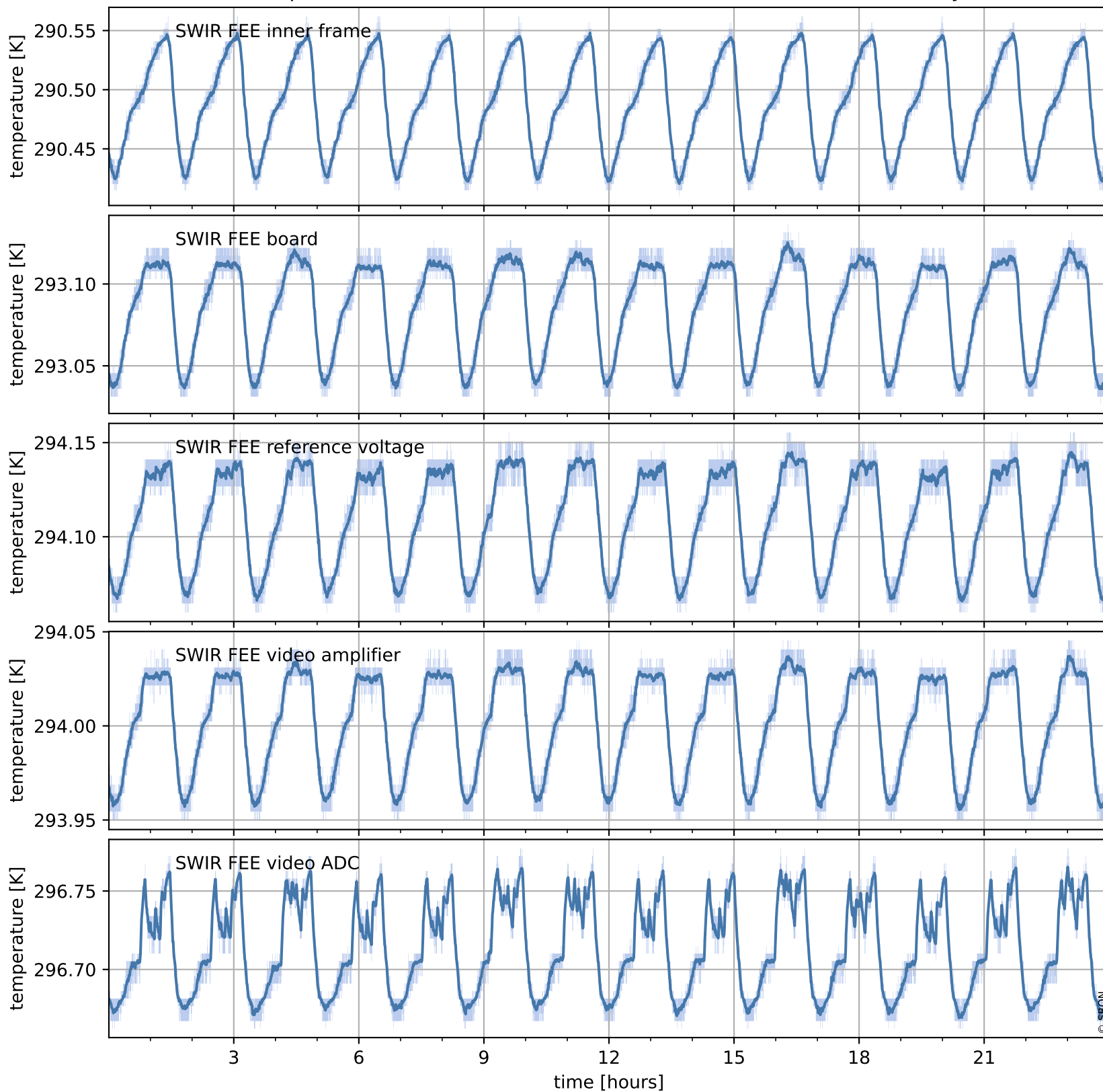
Current and duty cycle of 3 heaters relevant for SWIR (last month)



Tropomi SWIR housekeeping data

orbits : [9969, 9982]
coverage : 2019-09-16 / 2019-09-17
created : 2023-08-21T08:49:24

Temperature of sensors at the SWIR front-end electronics (one day)



Tropomi SWIR housekeeping data

orbits : [9498, 9982]
coverage : 2019-08-13 / 2019-09-17
created : 2023-08-21T08:49:24

Temperature of sensors at the SWIR front-end electronics (last month)

