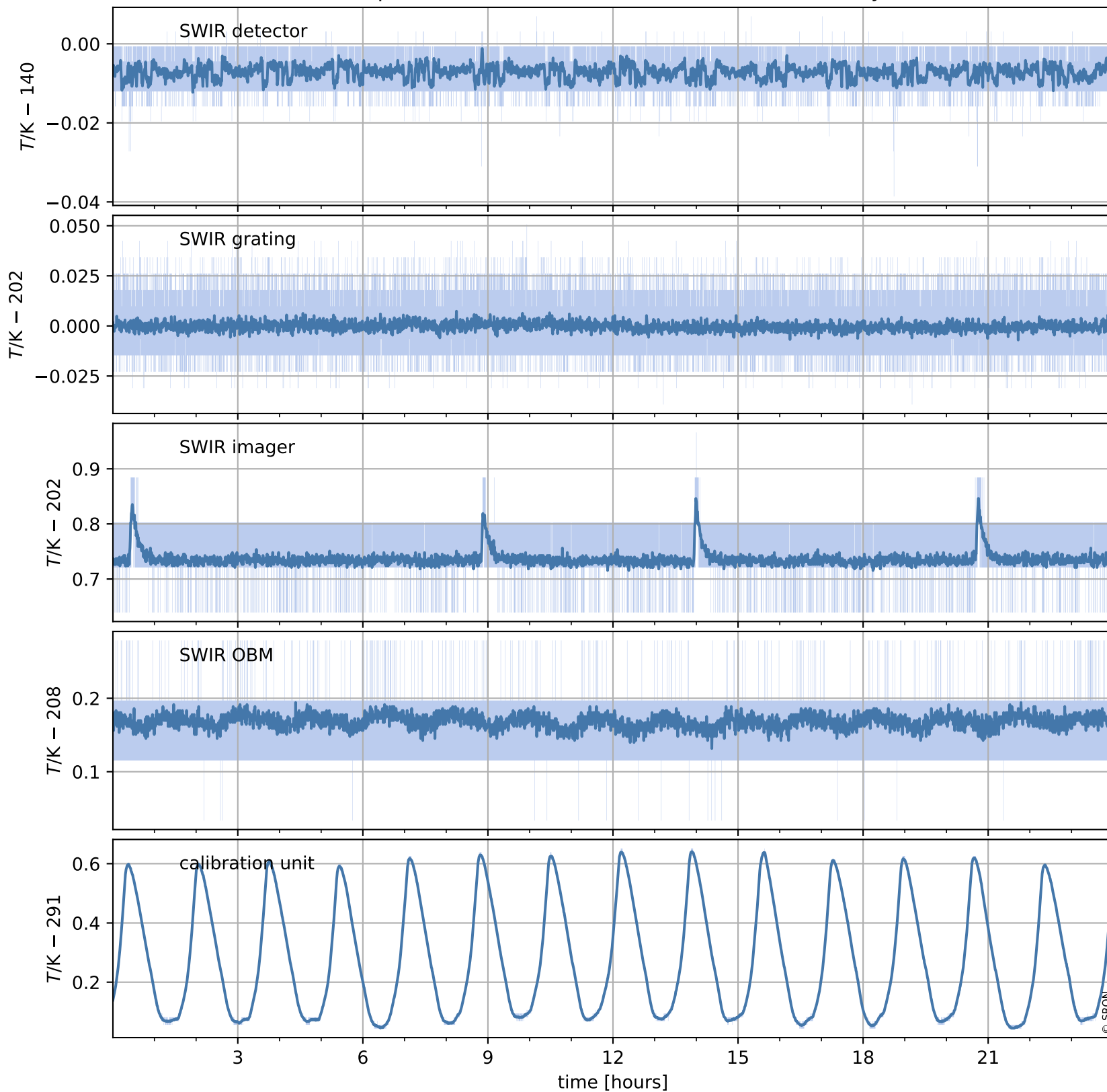


# Tropomi SWIR housekeeping data

orbits : [10068, 10081]  
coverage : 2019-09-23 / 2019-09-24  
created : 2023-08-21T08:49:39

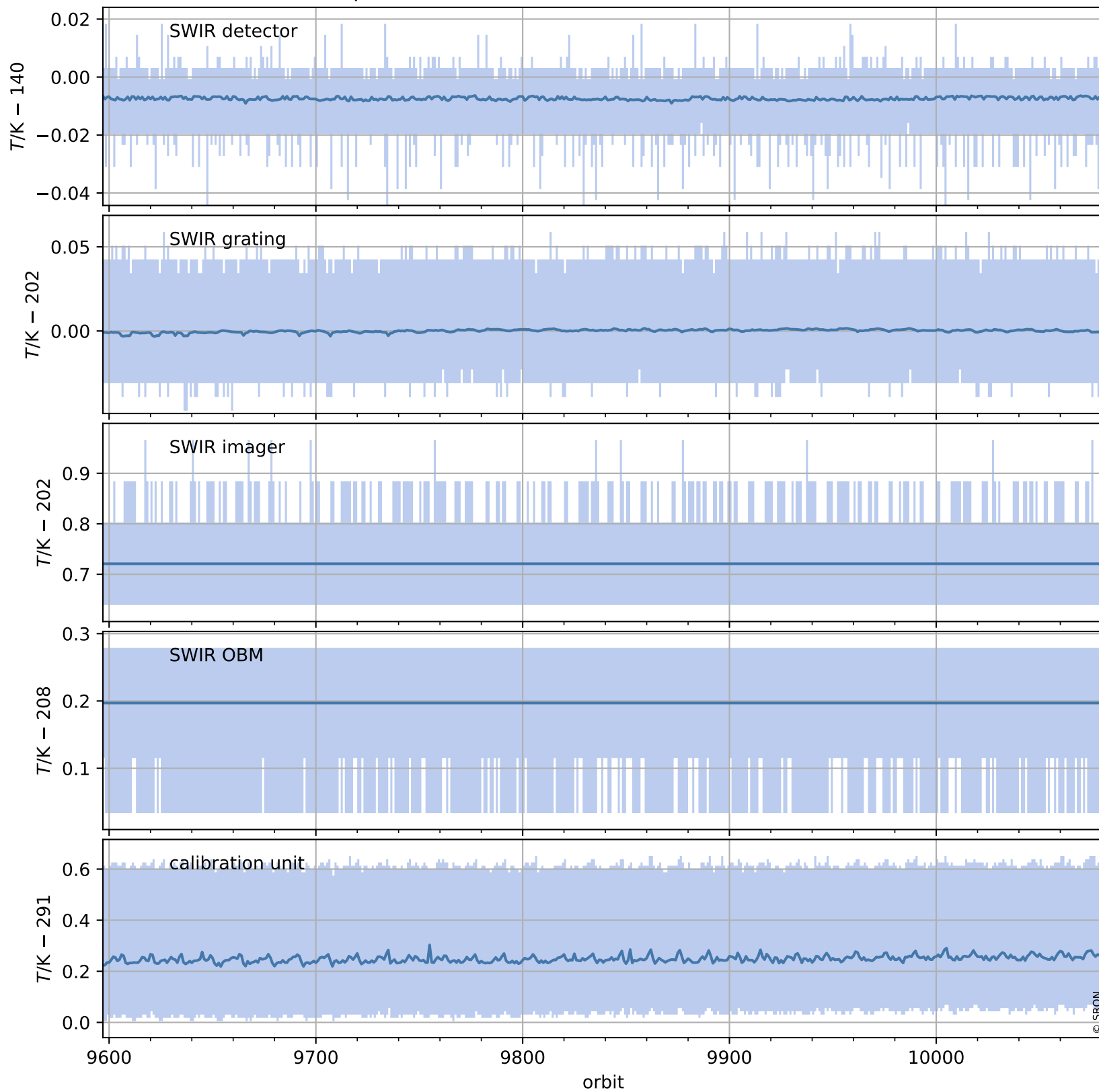
## Temperature of sensors relevant for SWIR (one day)



# Tropomi SWIR housekeeping data

orbits : [9597, 10081]  
coverage : 2019-08-20 / 2019-09-24  
created : 2023-08-21T08:49:39

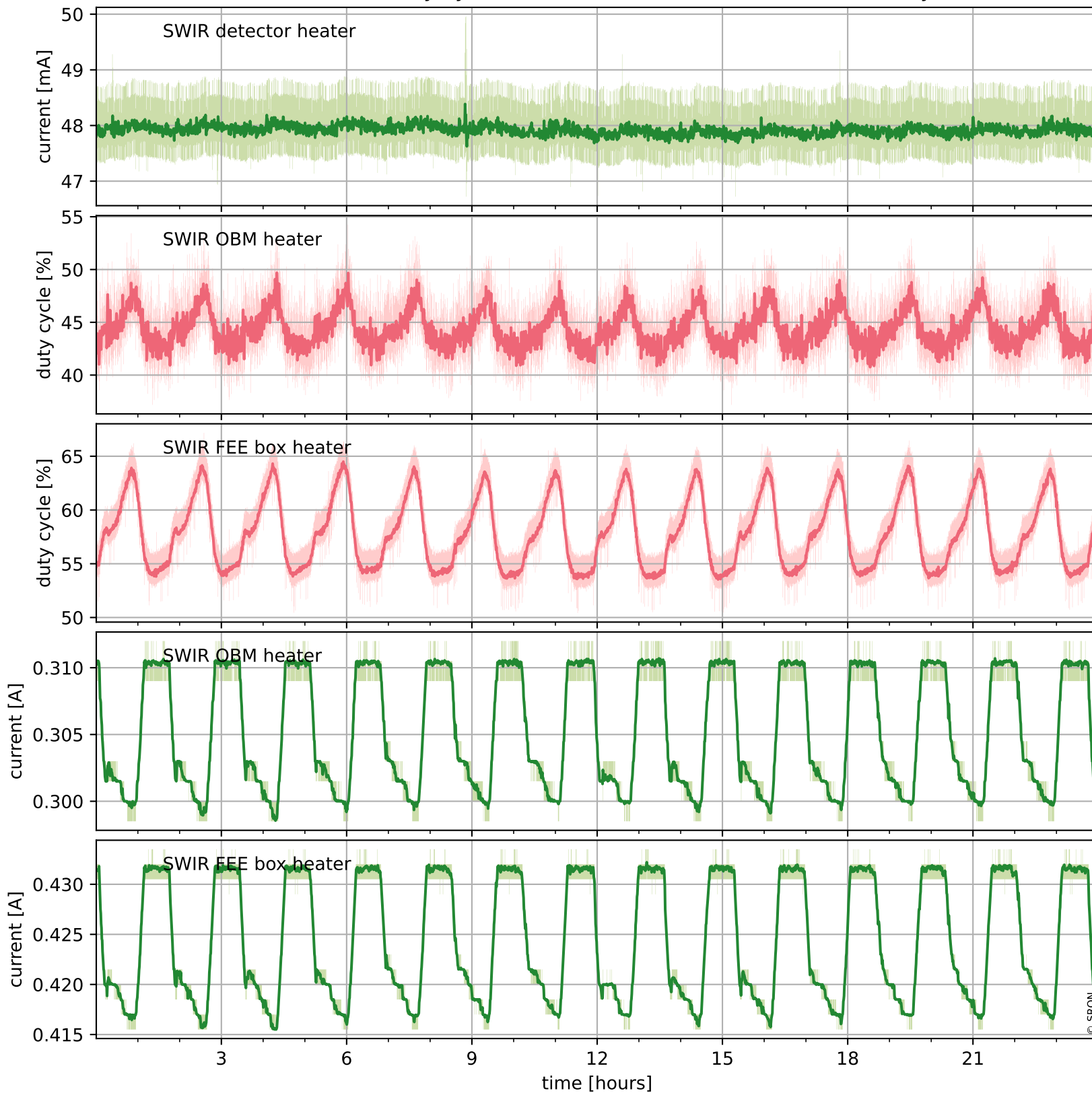
## Temperature of sensors relevant for SWIR (last month)



# Tropomi SWIR housekeeping data

orbits : [10068, 10081]  
coverage : 2019-09-23 / 2019-09-24  
created : 2023-08-21T08:49:40

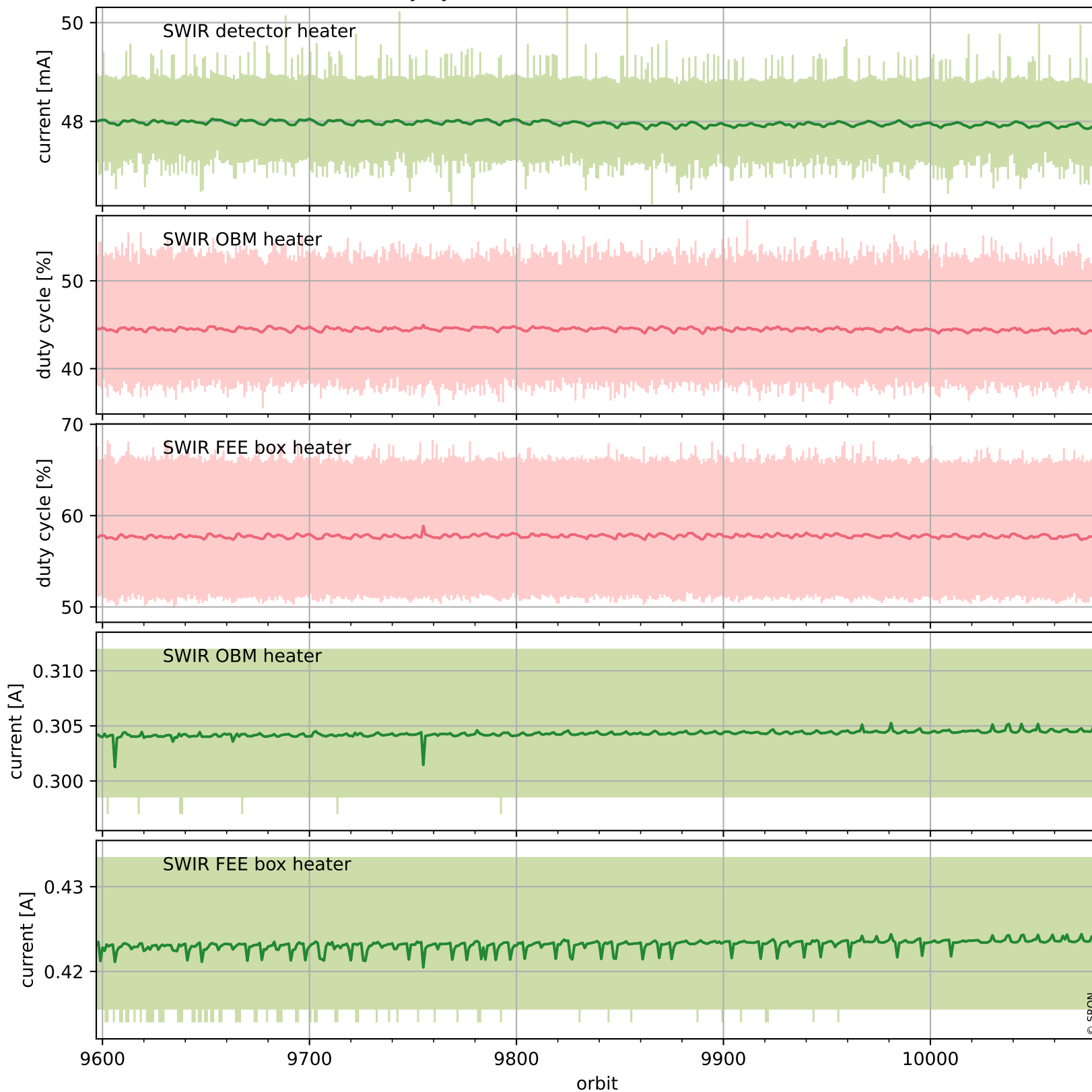
## Current and duty cycle of 3 heaters relevant for SWIR (one day)



# Tropomi SWIR housekeeping data

orbits : [9597, 10081]  
coverage : 2019-08-20 / 2019-09-24  
created : 2023-08-21T08:49:40

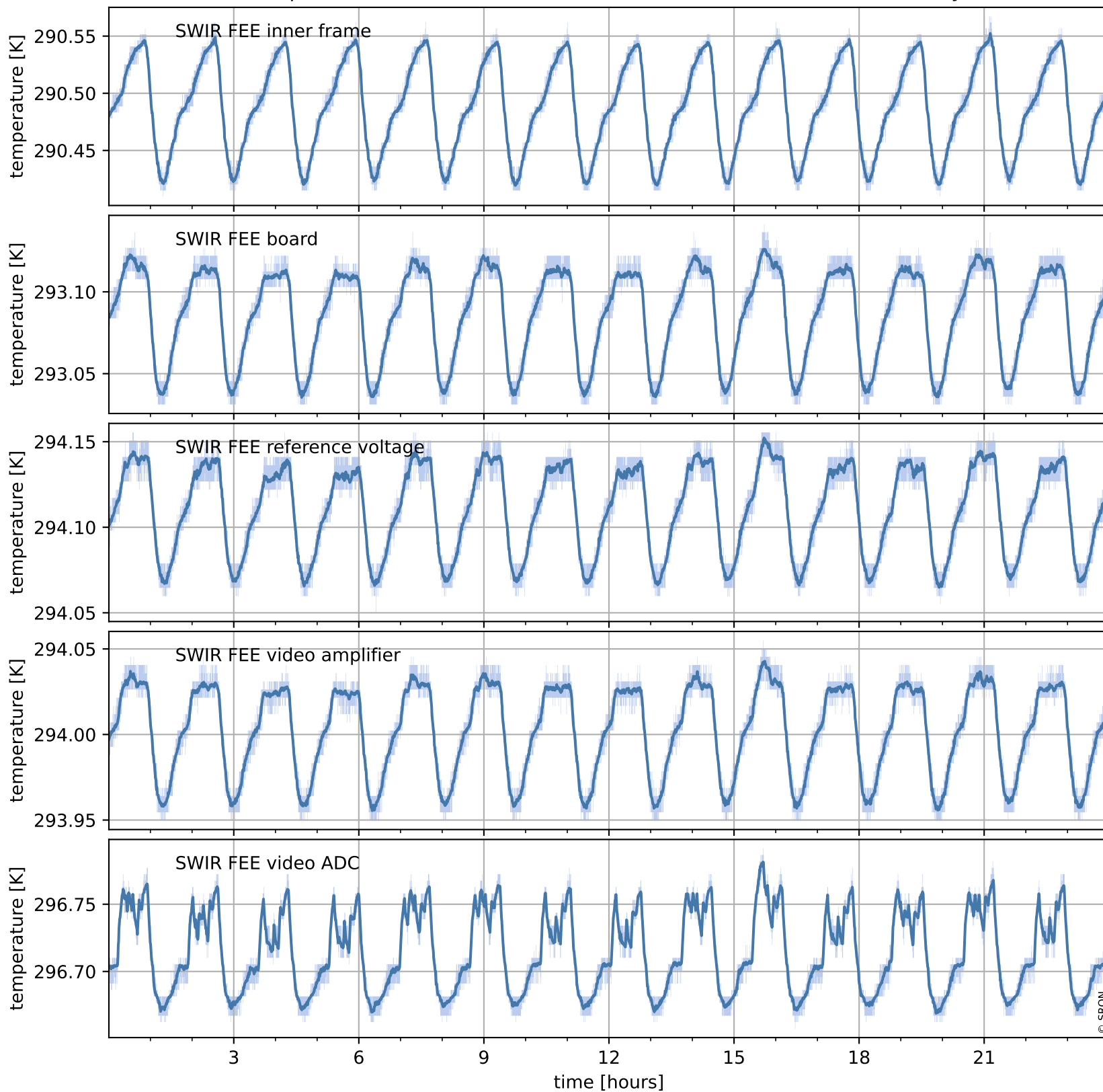
## Current and duty cycle of 3 heaters relevant for SWIR (last month)



# Tropomi SWIR housekeeping data

orbits : [10068, 10081]  
coverage : 2019-09-23 / 2019-09-24  
created : 2023-08-21T08:49:41

## Temperature of sensors at the SWIR front-end electronics (one day)



# Tropomi SWIR housekeeping data

orbits : [9597, 10081]  
coverage : 2019-08-20 / 2019-09-24  
created : 2023-08-21T08:49:41

## Temperature of sensors at the SWIR front-end electronics (last month)

