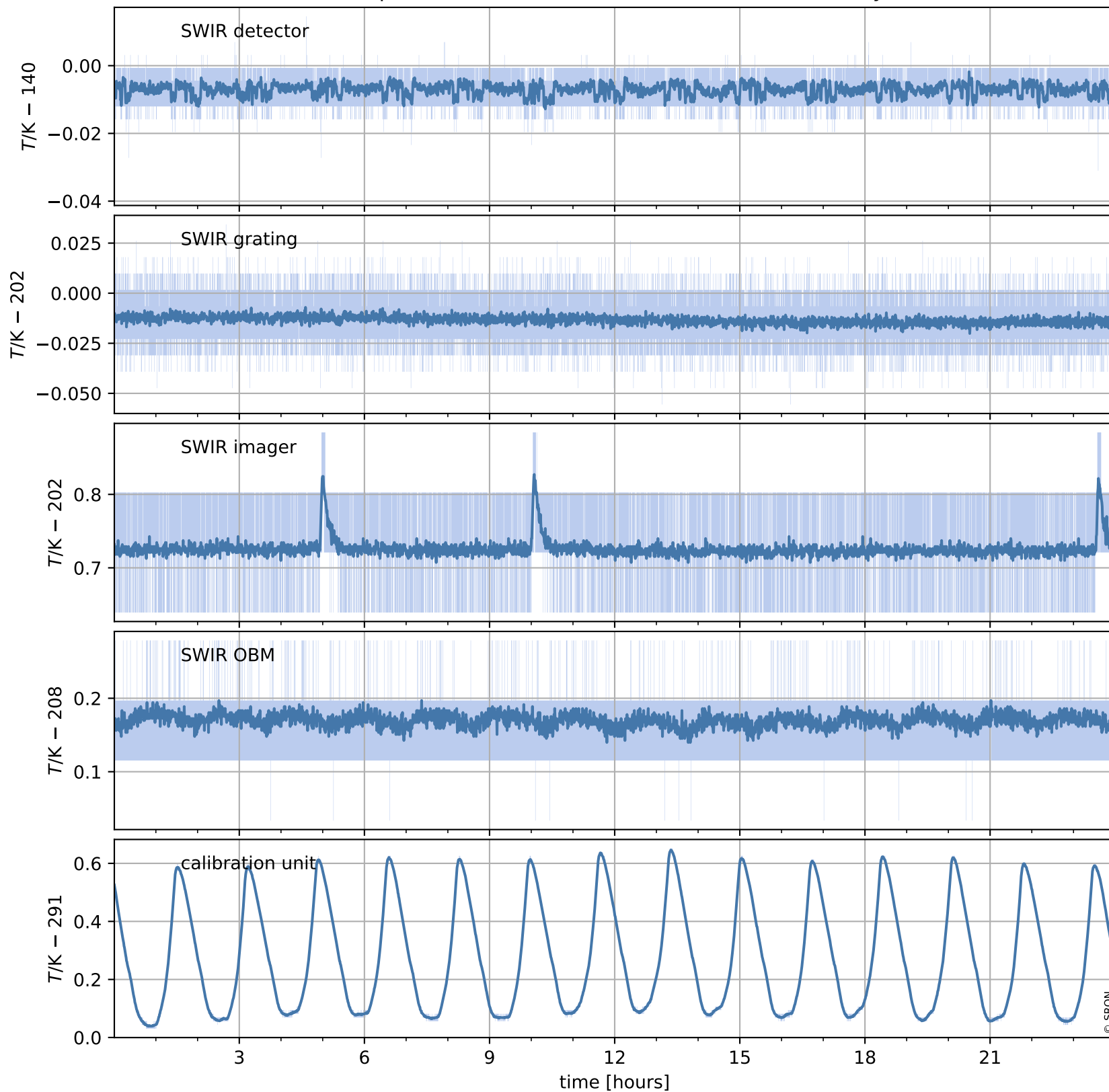


Tropomi SWIR housekeeping data

orbits : [10167, 10181]
coverage : 2019-09-30 / 2019-10-01
created : 2023-08-21T08:49:55

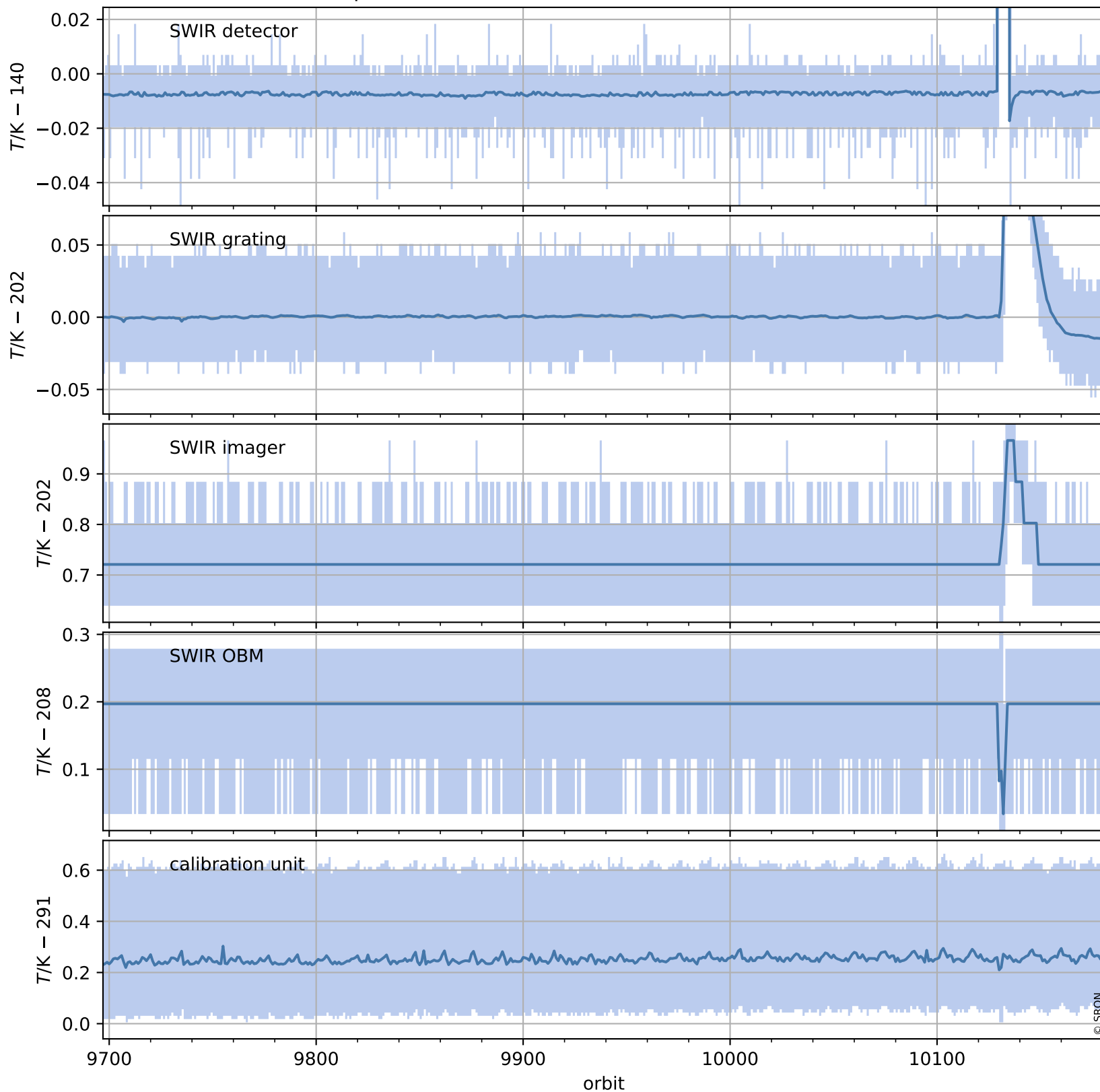
Temperature of sensors relevant for SWIR (one day)



Tropomi SWIR housekeeping data

orbits : [9697, 10181]
coverage : 2019-08-27 / 2019-10-01
created : 2023-08-21T08:49:56

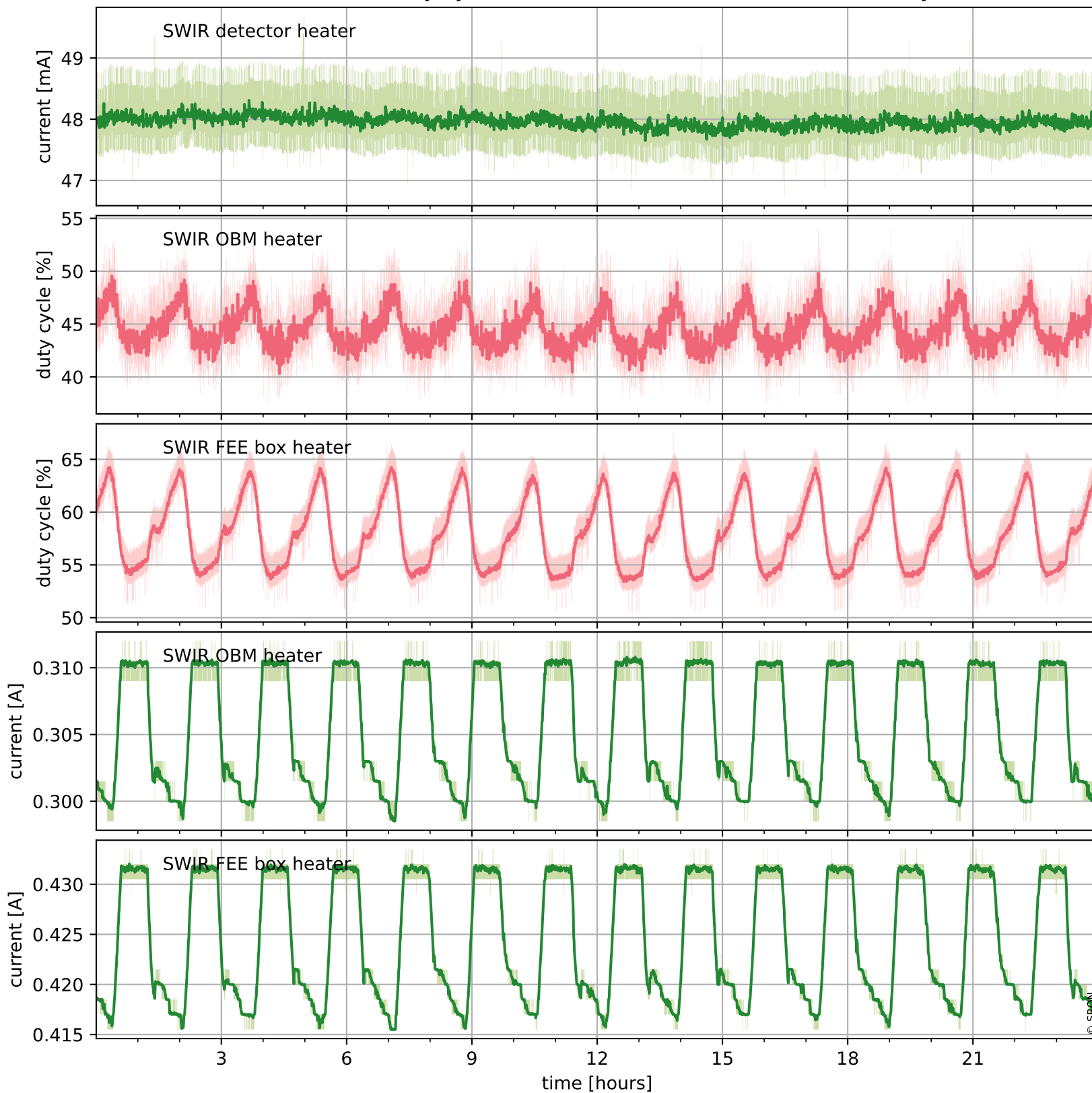
Temperature of sensors relevant for SWIR (last month)



Tropomi SWIR housekeeping data

orbits : [10167, 10181]
coverage : 2019-09-30 / 2019-10-01
created : 2023-08-21T08:49:56

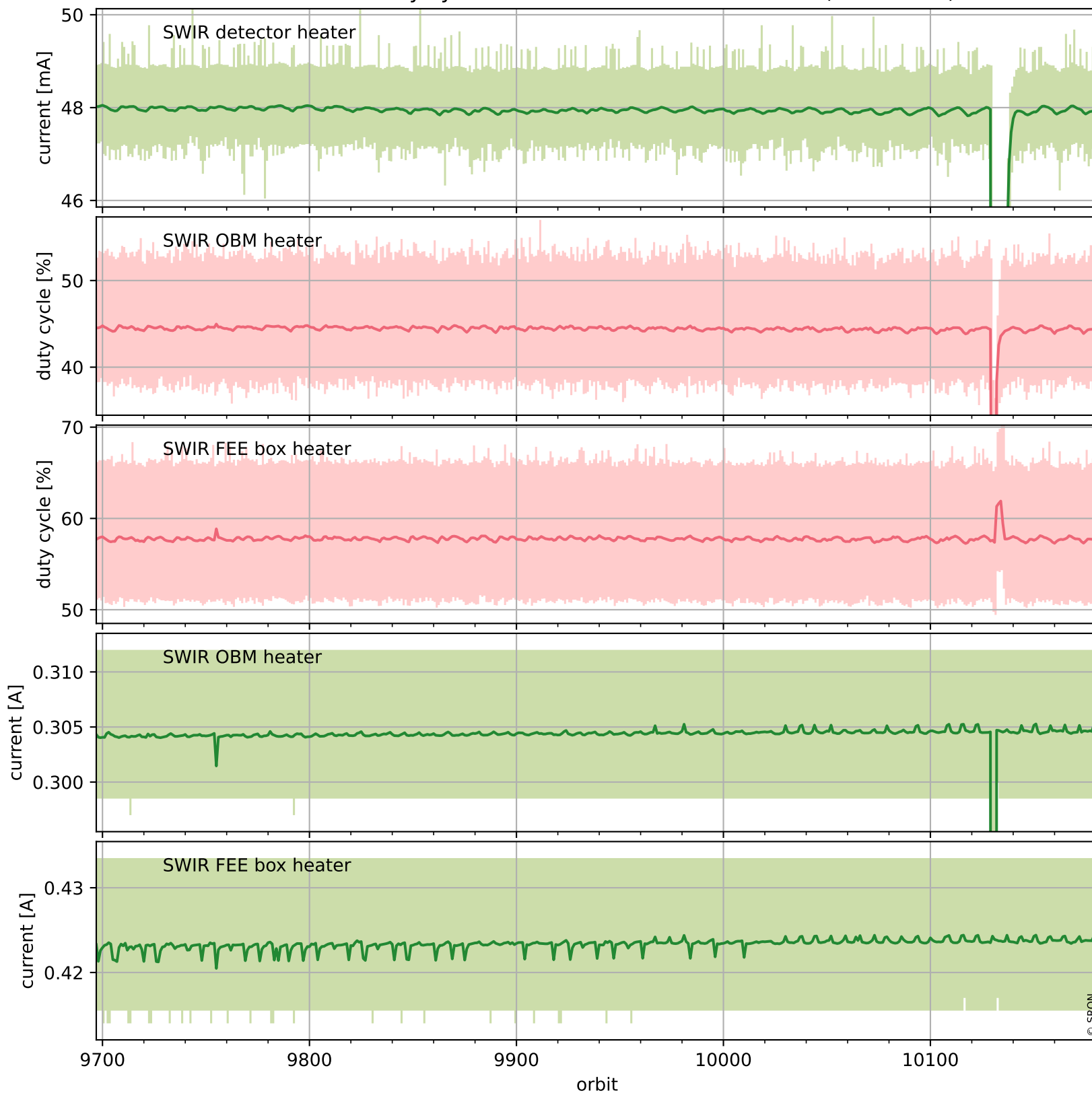
Current and duty cycle of 3 heaters relevant for SWIR (one day)



Tropomi SWIR housekeeping data

orbits : [9697, 10181]
coverage : 2019-08-27 / 2019-10-01
created : 2023-08-21T08:49:56

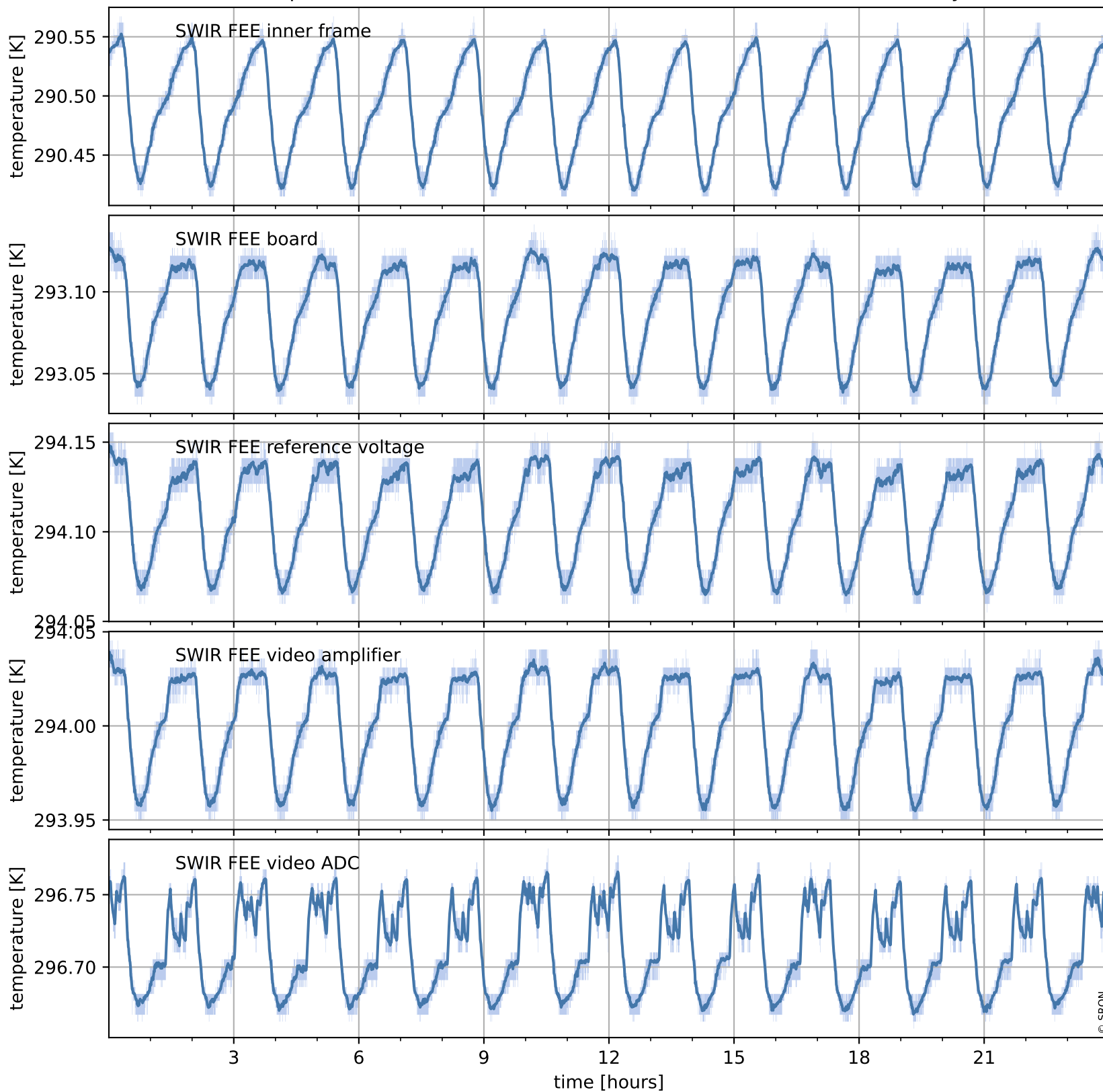
Current and duty cycle of 3 heaters relevant for SWIR (last month)



Tropomi SWIR housekeeping data

orbits : [10167, 10181]
coverage : 2019-09-30 / 2019-10-01
created : 2023-08-21T08:49:57

Temperature of sensors at the SWIR front-end electronics (one day)



Tropomi SWIR housekeeping data

orbits : [9697, 10181]
coverage : 2019-08-27 / 2019-10-01
created : 2023-08-21T08:49:57

Temperature of sensors at the SWIR front-end electronics (last month)

