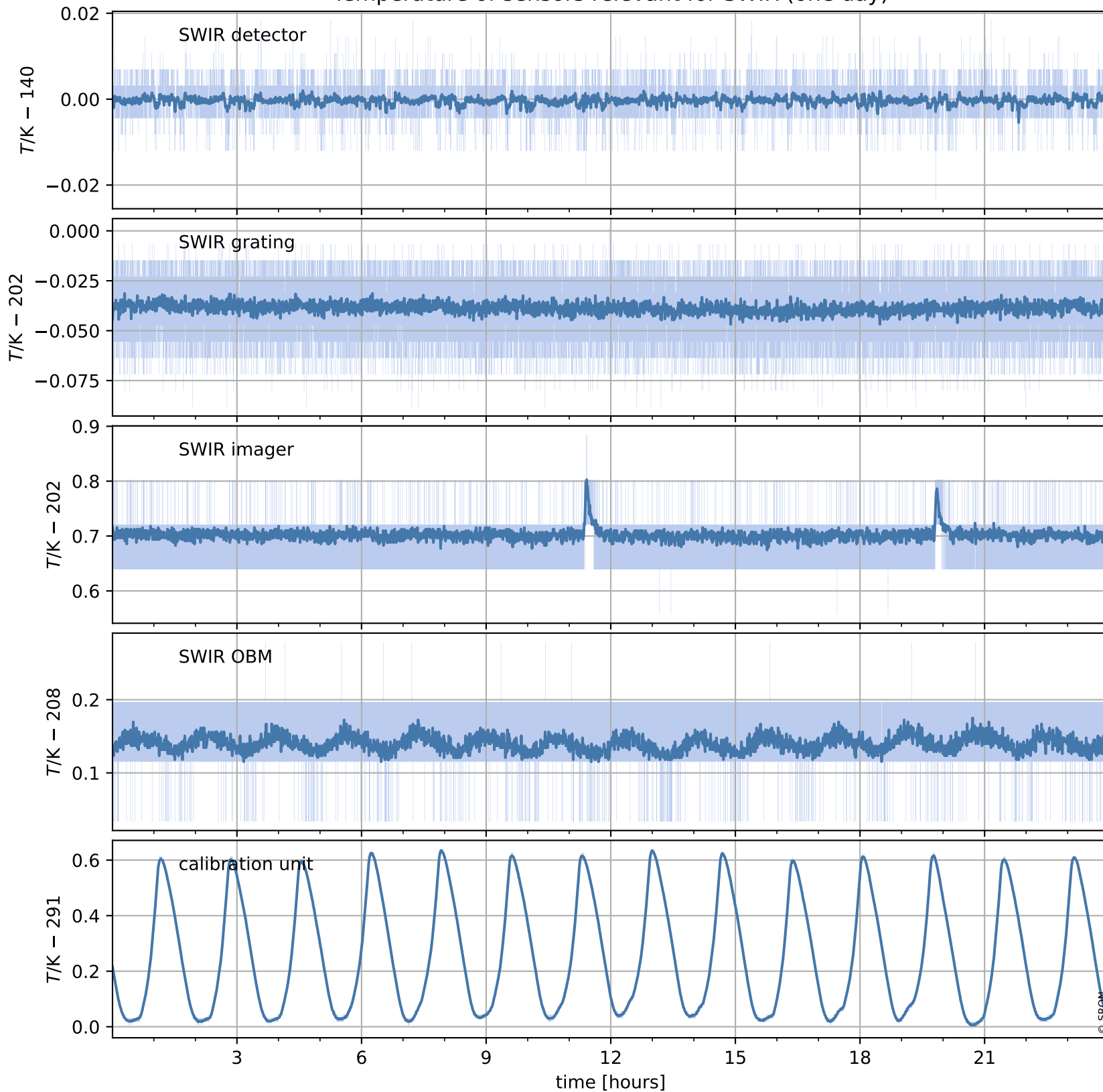


# Tropomi SWIR housekeeping data

orbits : [19872, 19885]  
coverage : 2021-08-14 / 2021-08-15  
created : 2023-08-21T09:16:22

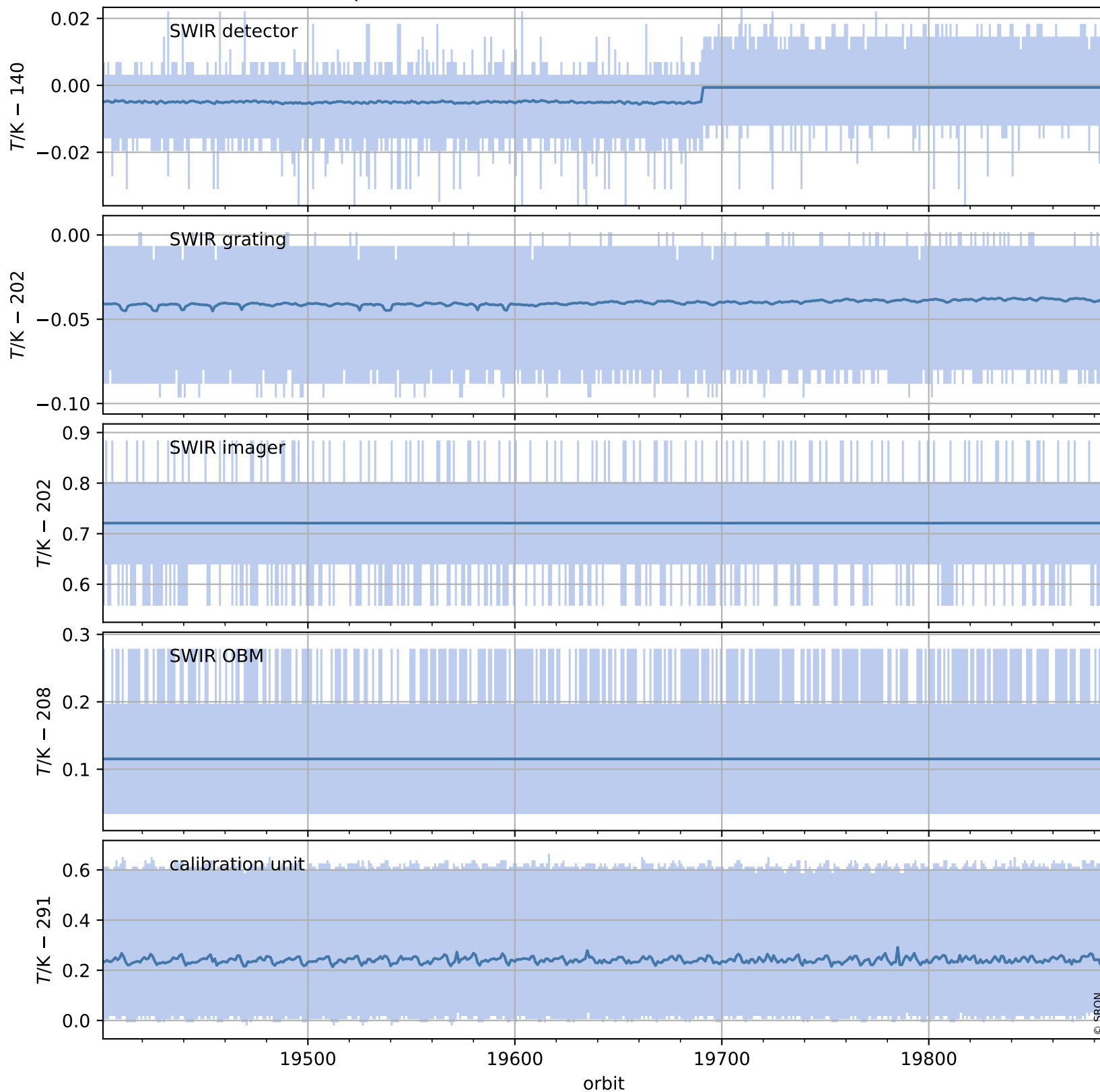
## Temperature of sensors relevant for SWIR (one day)



# Tropomi SWIR housekeeping data

orbits : [19401, 19885]  
coverage : 2021-07-11 / 2021-08-15  
created : 2023-08-21T09:16:23

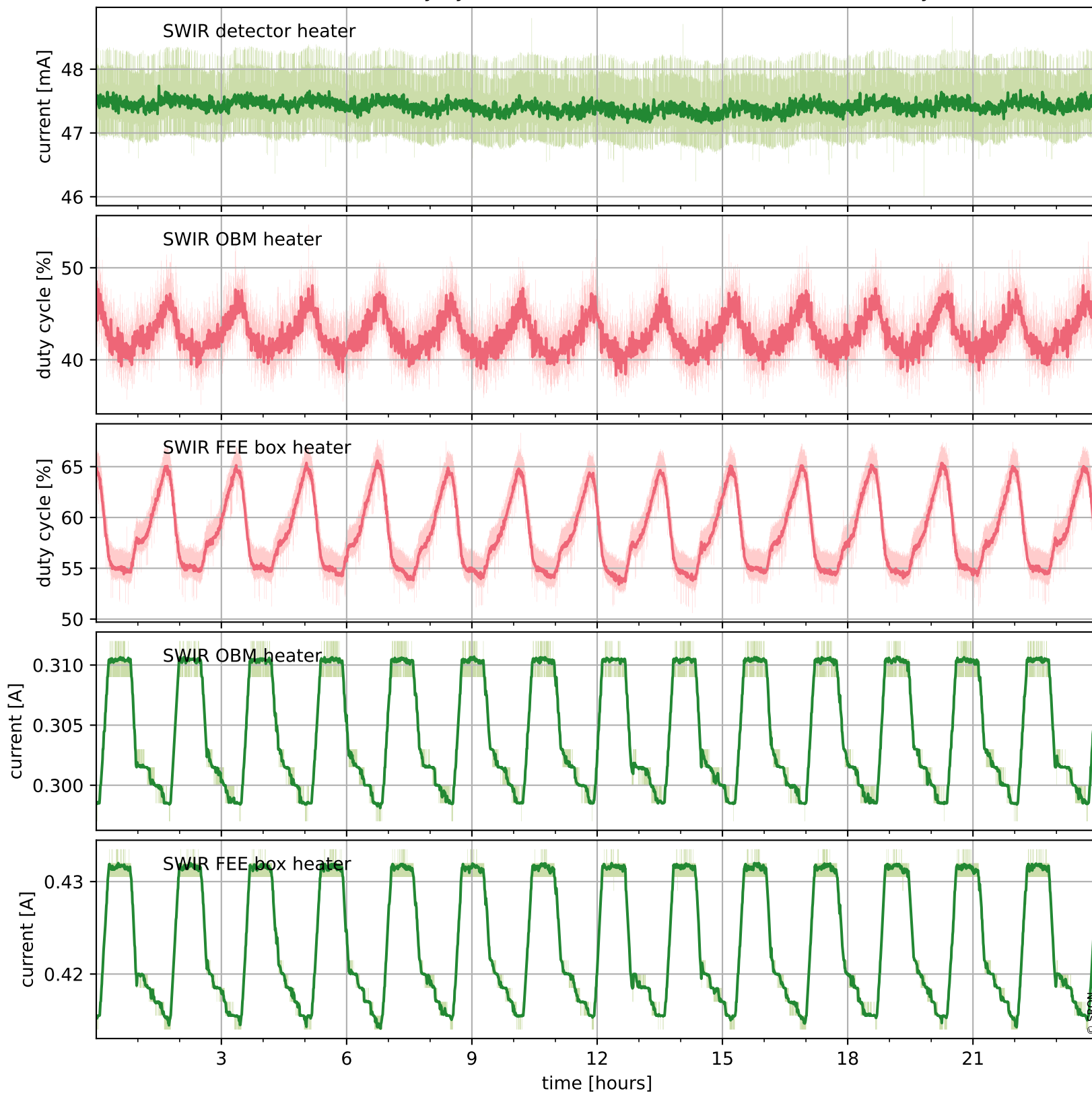
## Temperature of sensors relevant for SWIR (last month)



# Tropomi SWIR housekeeping data

orbits : [19872, 19885]  
coverage : 2021-08-14 / 2021-08-15  
created : 2023-08-21T09:16:23

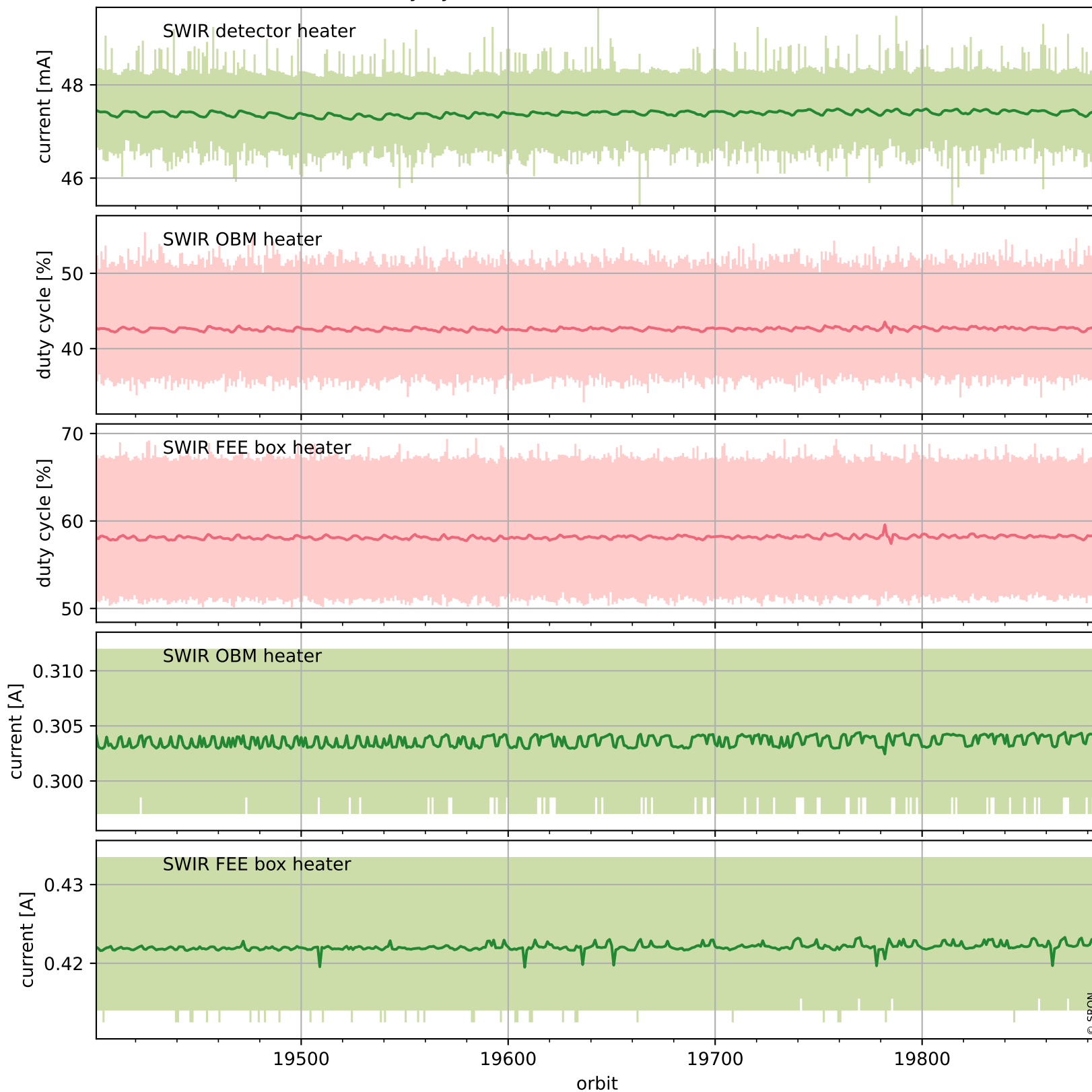
## Current and duty cycle of 3 heaters relevant for SWIR (one day)



# Tropomi SWIR housekeeping data

orbits : [19401, 19885]  
coverage : 2021-07-11 / 2021-08-15  
created : 2023-08-21T09:16:23

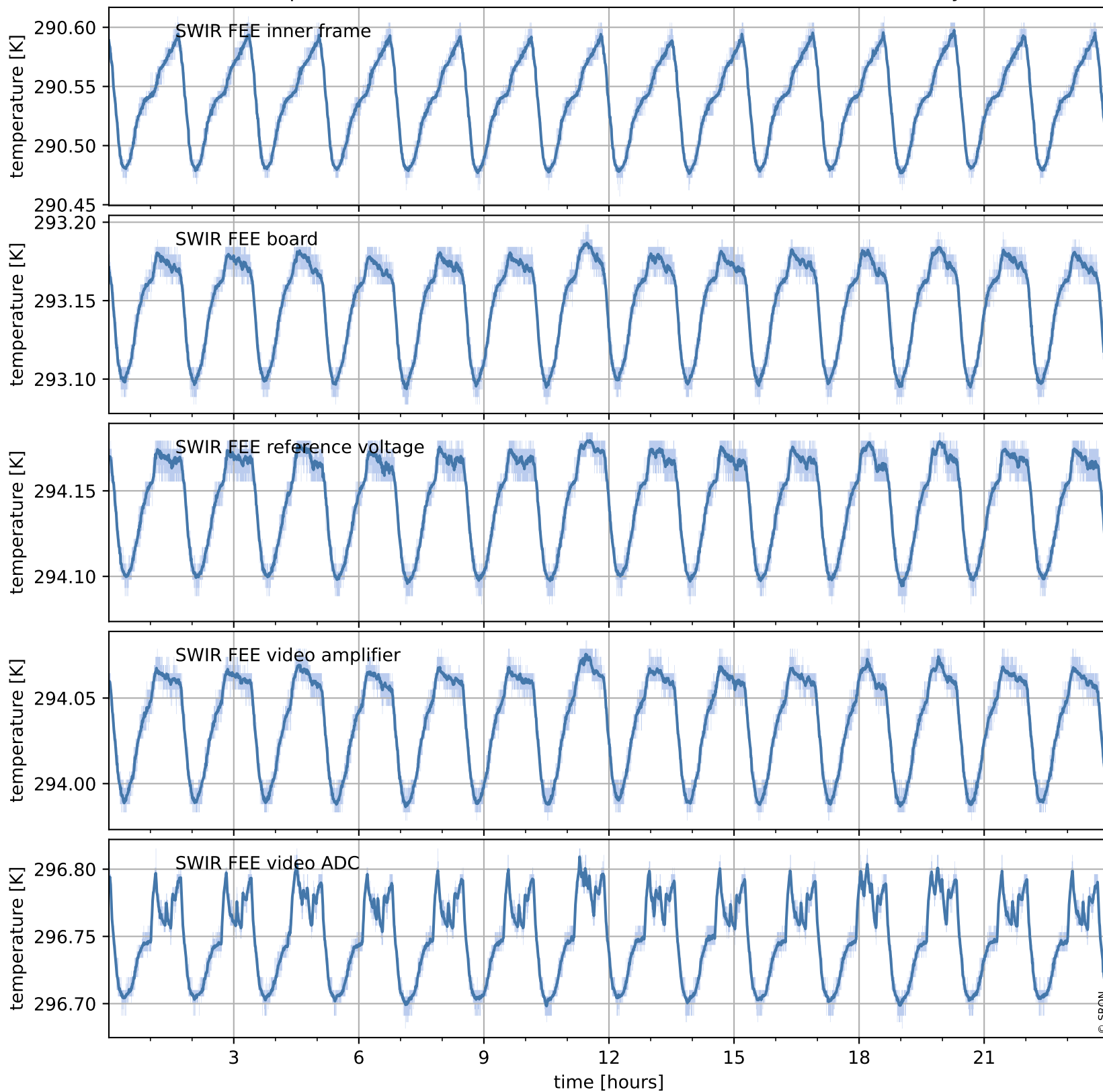
## Current and duty cycle of 3 heaters relevant for SWIR (last month)



# Tropomi SWIR housekeeping data

orbits : [19872, 19885]  
coverage : 2021-08-14 / 2021-08-15  
created : 2023-08-21T09:16:24

## Temperature of sensors at the SWIR front-end electronics (one day)



# Tropomi SWIR housekeeping data

orbits : [19401, 19885]  
coverage : 2021-07-11 / 2021-08-15  
created : 2023-08-21T09:16:24

## Temperature of sensors at the SWIR front-end electronics (last month)

